

## 7. Service Specification

Route: 242 & N242

Contract Reference: QC55205

This Service Specification forms section 7 of the ITT and should be read in conjunction with the ITT document, Version 1 dated 29 September 2011.

You are formally invited to tender for the provision of the bus service detailed below and in accordance with this Service Specification. Tenderers must ensure that a Compliant Tender is submitted and this will only be considered for evaluation if all parts of the Tender documents, as set out in section 11, have been received by the Corporation by the Date of Tender. The Tender must be fully completed in the required format, in accordance with the Instructions to Tenderers. A Compliant Tender must comply fully with the requirements of the Framework Agreement; adhere to the requirements of the Service Specification; and reflect the price of operating the Services with new vehicles.

<b>Route Number</b>	242 & N242
<b>Terminus Points</b>	<b>Option 1:</b> Homerton Hospital and Tottenham Court Road Station <b>Option 2:</b> Homerton Hospital and St. Pauls Station
<b>Contract Basis</b>	Incentivised
<b>Commencement Date</b>	25 <sup>th</sup> February 2017
<b>Vehicle Type</b>	87 capacity, dual door, double deck
<b>Current Maximum Approved Dimensions</b>	10.6 metres long and 2.55 metres wide
<b>New Vehicles Mandatory</b>	Yes
<b>Hybrid Price Required</b>	Yes
<b>Sponsored Route</b>	No
<b>Advertising Rights</b>	Operator
<b>Minimum Performance Standard - Route No. 242 (Option 1)</b>	Average Excess Wait Time - No more than 1.20 minutes
<b>Extension Threshold - Route No. 242 (Option 1)</b>	Average Excess Wait Time Threshold - 1.10 minutes
<b>Minimum Performance Standard - Route No. 242 (Option 2)</b>	Average Excess Wait Time - No more than 1.10 minutes
<b>Extension Threshold - Route No. 242 (Option 2)</b>	Average Excess Wait Time Threshold - 1.00 minutes
<b>Minimum Operated Mileage Standard - Route No. 242 (Options 1 &amp; 2)</b>	No less than 98.00%
<b>Departing On Time - Route No. N242 (Options 1 &amp; 2)</b>	Departing on Time - No less than 86.00%
<b>Minimum Operated Mileage Standard - Route No. N242 (Options 1 &amp; 2)</b>	No less than 99.00%

The Date of Tender for this ITT is:  
No later than 12 Noon on TBA

*Tenderers should refer to section 3 of Part A for the Service Specification Explanatory Notes and Appendix B of section 5 for the Example Service Specification of the ITT document.*

## **SERVICE SPECIFICATION**

- 1) SERVICE SPEC - ROUTE SPECIFICATION INFORMATION
- 2) NOTES
- 3) SCHEDULE REQUIREMENTS & PINCHPOINTS
- 4) OPERATIONAL CONSIDERATIONS
- 5) ROUTE RECORD, CURRENT PERFORMANCE, QSI BY TIME OF DAY, IBUS MILEAGE & QSI POINTS

## 2) NOTES

### **Proposed Changes:**

At this time, the Corporation expects to implement a change to the existing service prior to the commencement of the new Route Agreement for Route Nos. 242 & N242.

- Tenderers should refer to the schedules dated 15/06/2013 rather than the current emergency schedules.

Tenderers should note that the following alterations (subject to consultation) are proposed as part of this Service Specification for introduction with the new Route Agreement:

Two options are proposed:

### **Option 1**

- No changes to current structure.
- The departure times on Route No. N242 are retimed to better interwork with Route No. 242 on weeknights Ex Tottenham Court Road, New Oxford Street.
- Standing arrangements are likely to change during the life of this contract (see section 4.2)

### **Option 2**

- Route Nos. 242 & N242 are restructured to operate between Homerton Hospital and St. Pauls Station. The section of routeing between St. Pauls Station and Tottenham Court Road Station is withdrawn.
- Ex Homerton Hospital, Wardle Street, Route Nos. 242 & N242 are specified to operate via current line of route to Newgate Street and will then operate to King Edward Street to set down and stand.
- From St. Pauls Station, Route Nos. 242 & N242 are specified to exit the stand via Montague Street and will pick up at Bus Stop Number BP5594. It will then operate via Museum of London Roundabout, St Martin's le Grand and Cheapside to normal line of route to Homerton Hospital, Homerton Grove.
- Departures ex St. Pauls Station are forward projected from Tottenham Court Road Station, New Oxford Street.

### **Options 1 & 2**

- The designation Route No. N242 is used for contractual purposes only. This service will be marketed as Route No. 242. This includes all publicity, including destination blind displays.
- Tenderers must identify the cost of the Nightly element of this service separately.
- **Tenderers should refer to the schedules dated 15/06/2013 rather than the emergency schedules due to start 02/07/2016.**

**2) NOTES - continued.**

**Operators should provide the following prices:**

- 1. Annual diesel price - based on minimum 5 year contract.**
- 2. Annual diesel-electric hybrid price - based on minimum 5 year contract.**

**Tenderers are encouraged to offer alternative vehicle options in accordance with Part 9 of their tender, including but not limited to:**

- 1. New two door, single staircase vehicles inspired by the New Routemaster in respect of both their external and internal design, to the appropriate specification agreed between TfL and the manufacturers.**
- 2. Vehicles that offer genuine increased capacity on two axles and are certified as such.**
- 3. Modifications to reduce emissions and fuel consumption (including energy storage, engine stop/start, extended zero-emission range and/or energy efficient components)**
- 4. Existing vehicles.**

**Full iBus Monitoring was introduced on all night routes with effect from 1 April 2014.**

**Tenderers are therefore advised that on contracts where there is a night service both the day and night elements will be incentivised from the commencement of the Route Agreement in accordance with clause 46 of Annex B Terms and Conditions, using the Minimum Performance Standard(s) specified in Part 1 of the ITT.**

### 3) SCHEDULE REQUIREMENTS & PINCHPOINTS

#### 3.1) MONDAY TO FRIDAY SCHEDULE REQUIREMENTS & PINCHPOINTS

##### OPTION 1

Homerton Hospital, Wardle Street to Tottenham Court Road Station, St. Giles High Street			Tottenham Court Road Station, New Oxford Street to Homerton Hospital, Homerton Grove		
First departure no later than 0500.			First departure no later than 0545.		
0455 - 0540	Every 10 minutes		0540 - 0635	Every 10 minutes	
0541 - 0610	Every 8 minutes		0636 - 0730	Every 8 minutes	
0611 - 0810	Every 7-8 minutes (8 buses per hour)		0731 - 2000	Every 7-8 minutes (8 buses per hour)	
0811 - 0840	Every 6 minutes		2001 - 2055	Every 8 minutes	
0841 - 1820	Every 7-8 minutes (8 buses per hour)		2056 - 0050	Every 10 minutes	
1821 - 1925	Every 8 minutes				
1926 - 2350	Every 10 minutes				
Last departure no earlier than 2345.			Last departure no earlier than 0045.		
<b>Pinchpoints</b>					
Bank Station, Poultry	0705 - 0900	8 minutes	Hackney Central Station, Amhurst Road	0710 - 0910	8 minutes
	0901 - 0930	6 minutes		1505 - 1635	8 minutes
	1500 - 1630	8 minutes			

##### OPTION 2

Homerton Hospital, Wardle Street to St. Pauls Station			St. Pauls Station to Homerton Hospital, Homerton Grove		
First departure no later than 0500.			First departure no later than 0555.		
0455 - 0540	Every 10 minutes		0550 - 0645	Every 10 minutes	
0541 - 0610	Every 8 minutes		0646 - 0740	Every 8 minutes	
0611 - 0810	Every 7-8 minutes (8 buses per hour)		0741 - 2010	Every 7-8 minutes (8 buses per hour)	
0811 - 0840	Every 6 minutes		2011 - 2105	Every 8 minutes	
0841 - 1820	Every 7-8 minutes (8 buses per hour)		2106 - 0100	Every 10 minutes	
1821 - 1925	Every 8 minutes				
1926 - 2350	Every 10 minutes				
Last departure no earlier than 2345.			Last departure no earlier than 0055.		
<b>Pinchpoints</b>					
Shoreditch Church	0700 - 0845	8 minutes	Hackney Central Station, Amhurst Road	0710 - 0910	8 minutes
	0846 - 0915	6 minutes		1505 - 1635	8 minutes
	1500 - 1630	8 minutes			

### 3) SCHEDULE REQUIREMENTS & PINCHPOINTS - Continued

#### 3.2) SATURDAY AND GOOD FRIDAY SCHEDULE REQUIREMENTS & PINCHPOINTS

##### OPTION 1

Homerton Hospital, Wardle Street to Tottenham Court Road Station, St. Giles High Street			Tottenham Court Road Station, New Oxford Street to Homerton Hospital, Homerton Grove		
First departure no later than 0500.			First departure no later than 0545.		
0455 - 0720	Every 12 minutes		0540 - 0810	Every 12 minutes	
0721 - 0735	Every 8 minutes		0811 - 0850	Every 8 minutes	
0736 - 1730	Every 7-8 minutes (8 buses per hour)		0851 - 1855	Every 7-8 minutes (8 buses per hour)	
1731 - 1835	Every 8 minutes		1856 - 1935	Every 8 minutes	
1836 - 2350	Every 10 minutes		1936 - 0050	Every 10 minutes	
Last departure no earlier than 2345.			Last departure no earlier than 0045.		
<b>Pinchpoints</b>					
Bank Station, Poultry	0930 - 1100	8 minutes	Hackney Central Station, Amhurst Road	0905 - 1105	8 minutes

##### OPTION 2

Homerton Hospital, Wardle Street to St. Pauls Station			St. Pauls Station to Homerton Hospital, Homerton Grove		
First departure no later than 0500.			First departure no later than 0555.		
0455 - 0720	Every 12 minutes		0550 - 0820	Every 12 minutes	
0721 - 0735	Every 8 minutes		0821 - 0900	Every 8 minutes	
0736 - 1730	Every 7-8 minutes (8 buses per hour)		0901 - 1905	Every 7-8 minutes (8 buses per hour)	
1731 - 1835	Every 8 minutes		1906 - 1945	Every 8 minutes	
1836 - 2350	Every 10 minutes		1946 - 0100	Every 10 minutes	
Last departure no earlier than 2345.			Last departure no earlier than 0055.		
<b>Pinchpoints</b>					
Shoreditch Church	0905 - 1100	8 minutes	Hackney Central Station, Amhurst Road	0905 - 1105	8 minutes

**3) SCHEDULE REQUIREMENTS & PINCHPOINTS - Continued**

**3.3) SUNDAY AND PUBLIC HOLIDAYS (EXCEPT GOOD FRIDAY AND CHRISTMAS DAY) SCHEDULE REQUIREMENTS & PINCHPOINTS**

**OPTION 1**

Homerton Hospital, Wardle Street to Tottenham Court Road Station, St. Giles High Street			Tottenham Court Road Station, New Oxford Street to Homerton Hospital, Homerton Grove		
First departure no later than 0500.			First departure no later than 0545.		
0455 - 0630	Every 15 minutes		0540 - 0730	Every 15 minutes	
0631 - 0840	Every 12 minutes		0731 - 0945	Every 12 minutes	
0841 - 2350	Every 10 minutes		0946 - 0050	Every 10 minutes	
Last departure no earlier than 2345.			Last departure no earlier than 0045.		
<b>Pinchpoints</b>					
Bank Station, Poultry	1010 - 1210	10 minutes	Hackney Central Station, Amhurst Road	1020 - 1130	10 minutes

**Tenderers must identify the cost of the Boxing Day element of this service separately.**

**OPTION 2**

Homerton Hospital, Wardle Street to St. Pauls Station			St. Pauls Station to Homerton Hospital, Homerton Grove		
First departure no later than 0500.			First departure no later than 0555.		
0455 - 0630	Every 15 minutes		0550 - 0740	Every 15 minutes	
0631 - 0840	Every 12 minutes		0741 - 0955	Every 12 minutes	
0841 - 2350	Every 10 minutes		0956 - 0100	Every 10 minutes	
Last departure no earlier than 2345.			Last departure no earlier than 0055.		
<b>Pinchpoints</b>					
Shoreditch Church	1000 - 1200	10 minutes	Hackney Central Station, Amhurst Road	1020 - 1130	10 minutes

**Tenderers must identify the cost of the Boxing Day element of this service separately.**

### 3) SCHEDULE REQUIREMENTS & PINCHPOINTS - Continued

#### 3.4) NIGHTLY

##### OPTION 1

Homerton Hospital, Wardle Street to Tottenham Court Road Station, St. Giles High Street		Tottenham Court Road Station, New Oxford Street to Homerton Hospital, Homerton Grove	
First departure no later than 0005.		First departure no later than 0105.	
2400 - 0450	Every 20 minutes	0100 - 0530	Every 20 minutes
Last departure no earlier than 0445.		Last departure no earlier than 0525.	

**Tenderers must identify the cost of the Nightly element of this service separately.**

##### OPTION 2

Homerton Hospital, Wardle Street to St. Pauls Station		St. Pauls Station to Homerton Hospital, Homerton Grove	
First departure no later than 0005.		First departure no later than 0115.	
2400 - 0450	Every 20 minutes	0110 - 0540	Every 20 minutes
Last departure no earlier than 0445.		Last departure no earlier than 0535.	

**Tenderers must identify the cost of the Nightly element of this service separately.**

#### 4) OPERATIONAL CONSIDERATIONS

- 4.1) Route Nos. 242 & N242 can suffer from unpredictable traffic delays in the City of London area on Mondays to Fridays, particularly during peak periods.
- 4.2) In conjunction with the completion of the West End Project, standing arrangements are likely to change in 2018. A minispec will be issued closer to the time.
- 4.3) Crossrail will connect the City, Canary Wharf, the West End and Heathrow Airport to commuter areas east and west of the capital. Major construction of the railway began in 2010, with the first services expected to commence through the central London tunnelled section in late 2018. The full Crossrail service will be operating from Heathrow and Reading to Abbey Wood and Shenfield in late 2019. The construction impacts of Crossrail could affect Route Nos. 242 & N242 and it is anticipated that some passenger demand for Route Nos. 242 & N242 may shift to this line when it opens. Route Nos. 242 & N242 will be reviewed after the opening date.



**5) ROUTE RECORD, CURRENT PERFORMANCE, QSI BY TIME OF DAY,  
IBUS MILEAGE & QSI POINTS**

5.1) ROUTE RECORD  
As per Busnet printout.

5.2) CURRENT PERFORMANCE  
As per current print out.

5.3) QSI BY TIME OF DAY  
As per current print out.

5.4) IBUS MILEAGE & QSI POINTS  
As per current print out.

## LONDON BUSES - ROUTE DESCRIPTION

### ROUTE 242: Homerton Hospital - Tottenham Court Road Station (24 hour service)

**Date of Structural Change:** 25 February 2017.

**Date of Service Change:** 25 February 2017.

**Reason for Issue:** New Tender.

#### **STREETS TRAVERSED**

**Towards Tottenham Court Road Station:** Wardle Street, Homerton High Street, Brooksby's Walk, Chatsworth Road, Dunlace Road, Glyn Road, Redwald Road, Daubeney Road, Mandeville Street, Millfields Road, Chatsworth Road, Powerscroft Road, Median Road, Lower Clapton Road, Dalston Lane, Amhurst Road, Mare Street, Graham Road, Dalston Lane, Kingsland Road, Shoreditch High Street, Norton Folgate, Bishopsgate, Threadneedle Street, Mansion House Street, Poultry, Cheapside, Newgate Street, Holborn Viaduct, Holborn Circus, Holborn, High Holborn.

**Towards Homerton Hospital:** New Oxford Street, Bloomsbury Way, Vernon Place, Theobald's Road, Drake Street, Procter Street, High Holborn, Holborn, Holborn Circus, Holborn Viaduct, Newgate Street, King Edward Street, Angel Street, St Martin's Le Grand, Cheapside, Poultry, Mansion House Street, Threadneedle Street, Bishopsgate, Norton Folgate, Shoreditch High Street, Kingsland Road, Dalston Lane, Graham Road, Mare Street, Amhurst Road, Dalston Lane, Lower Clapton Road, Powerscroft Road, Chatsworth Road, Millfields Road, Mandeville Street, Daubeney Road, Redwald Road, Glyn Road, Clifden Road, Brooksby's Walk, Homerton Grove.

## **AUTHORISED STANDS, CURTAILMENT POINTS, & BLIND DESCRIPTIONS**

Please note that only stands, curtailment points, & blind descriptions as detailed in this contractual document may be used.

### **HOMERTON HOSPITAL, WARDLE STREET**

Public stand in Wardle Street, commencing 3 metres north of St. Barnabus Terrace and extending 25 metres north.

Buses proceed from Homerton Grove via Wardle Street to stand, departing to Wardle Street. Set down in Homerton Grove, at Stop F (BP1818 - Homerton Hospital, Last Stop on LOR: BP1818 - Homerton Hospital) and pick up in Wardle Street, at Stop HA (BP4166 - Homerton Hospital / Wardle Street, First Stop on LOR: BP4166 - Homerton Hospital / Wardle Street).

AVAILABILITY:	At any time.
OPERATING RESTRICTIONS:	No more than 2 buses on Route 242 should be scheduled to stand at any one time.
MEAL RELIEFS:	No meal relief vehicles to stand at any time.
FERRY VEHICLES:	No ferry vehicles to park on stand at any time.
BLIND DISPLAY:	Homerton Hospital.
OTHER INFORMATION:	Toilet facilities available 24 hours a day.

### **CLAPTON PARK, MILLFIELDS ROAD (from TOTTENHAM COURT ROAD STATION)**

Public stand on north side of Millfields Road, commencing 60 metres east of Chatsworth Road and extending 22 metres west.

Buses proceed from Millfields Road direct to stand, departing via Millfields Road, Glyn Road, Elderfield Road and Chatsworth Road to Powerscroft Road. Set down in Millfields Road, at Alighting Point (34475 - Clapton Park, Last Stop on LOR: BP1824 - Chatsworth Road) and pick up in Powerscroft Road (BP1822 - Chatsworth Road, First Stop on LOR: BP1822 - Chatsworth Road).

AVAILABILITY:	At any time.
OPERATING RESTRICTIONS:	Unscheduled curtailments only.
MEAL RELIEFS:	No meal relief vehicles to stand at any time.
FERRY VEHICLES:	No ferry vehicles to park on stand at any time.
BLIND DISPLAY:	Clapton Park, Millfields.

### **HACKNEY CENTRAL STATION (from TOTTENHAM COURT ROAD STATION)**

Buses proceed from Graham Road via Mare Street, Bohemia Place, Clapton Bus Garage, Bohemia Place and Mare Street departing to Graham Road. Set down in Graham Road, at Stop G (20997 - Hackney Central/ Mare Street, Last Stop on LOR: 20997 - Hackney Central/ Mare Street) and pick up in Graham Road, at Stop E (308 - Graham Road / Hackney Central #, First Stop on LOR: 308 - Graham Road / Hackney Central #).

AVAILABILITY: At any time.  
OPERATING RESTRICTIONS: **Turning Point Only - Buses must not stand**  
BLIND DISPLAY: Hackney Central.

### **DALSTON, HERTFORD ROAD (from TOTTENHAM COURT ROAD STATION)**

Public stand for two buses in Hertford Road, commencing 10 metres south of a point opposite the south flank wall of Nos 87/95 and extending 25 metres north. Buses proceed from Kingsland Road via Enfield Road and Hertford Road to stand, departing via Hertford Road and Downham Road to Kingsland Road. Set down in Kingsland Road, at Stop KE (29730 - Haggerston Station >lol<, Last Stop on LOR: 29730 - Haggerston Station >lol<) and pick up in Kingsland Road, at Stop KK (BP3454 - Haggerston Station #, First Stop on LOR: BP3454 - Haggerston Station #).

AVAILABILITY: At any time.  
OPERATING RESTRICTIONS: Unscheduled curtailments only.  
MEAL RELIEFS: No meal relief vehicles to stand at any time.  
FERRY VEHICLES: No ferry vehicles to park on stand at any time.  
BLIND DISPLAY: Dalston, Downham Road.

### **DALSTON JUNCTION BUS STATION (from Homerton Hospital)**

Private stand for 6 buses in bus station. Buses proceed from Kingsland Road via Forest Road and Dalston Junction Bus Station to stand, departing via Dalston Junction Bus Station and Kingsland Road to Dalston Lane. Set down in Kingsland Road, at Stop D (2095 - Kingsland Road / Forest Road, Last Stop on LOR: 2095 - Kingsland Road / Forest Road) and pick up in Dalston Lane, at Stop K (14219 - Dalston Lane / Dalston Junction Station #, First Stop on LOR: 14219 - Dalston Lane / Dalston Junction Station #).

AVAILABILITY: At any time.  
OPERATING RESTRICTIONS: Unscheduled curtailments only  
MEAL RELIEFS: No meal relief vehicles to stand at any time.  
FERRY VEHICLES: No ferry vehicles to park on stand at any time.  
BLIND DISPLAY: Dalston Junction.

## SHOREDITCH, CALVERT AVENUE

Public stand for five buses on north side of Calvert Avenue, commencing at a point 76 metres east of Shoreditch High Street and extending 60 metres west.

### From Homerton Hospital.

Buses proceed from Kingsland Road via Shoreditch High Street and Calvert Avenue to stand, departing via Calvert Avenue, Arnold Circus, Calvert Avenue and Shoreditch High Street to Kingsland Road. Set down in Kingsland Road, at Stop T (13454 - Shoreditch Church, Last Stop on LOR: 13454 - Shoreditch Church) and pick up in Kingsland Road, at Stop V (29596 - Waterson Street, First Stop on LOR: 2108 - Hoxton Station >lol< / Geffrye Museum).

### From Tottenham Court Road Station.

Buses proceed from Shoreditch High Street via Calvert Avenue to stand, departing via Calvert Avenue, Arnold Circus and Calvert Avenue to Shoreditch High Street. Set down in Shoreditch High Street, at Stop P (BP3475 - Shoreditch Church, Last Stop on LOR: BP3475 - Shoreditch Church) and pick up in Shoreditch High Street, at Stop N (33346 - Shoreditch High Street Station #, First Stop on LOR: 33346 - Shoreditch High Street Station #).

AVAILABILITY:	At any time.
OPERATING RESTRICTIONS:	Unscheduled curtailments only.
MEAL RELIEFS:	No meal relief vehicles to stand at any time.
FERRY VEHICLES:	No ferry vehicles to park on stand at any time.
BLIND DISPLAY:	Shoreditch.

## LIVERPOOL STREET STATION, BISHOPSGATE (from Homerton Hospital)

Buses proceed from Bishopsgate via Wormwood Street, London Wall, Moorgate, South Place, Eldon Street, Blomfield Street, London Wall and Wormwood Street departing to Bishopsgate. Set down in Bishopsgate, at Stop L (2116 - Liverpool Street Station <> #, Last Stop on LOR: 2116 - Liverpool Street Station <> #) and pick up in Bishopsgate, at Stop E (37641 - Liverpool Street Station <> #, First Stop on LOR: 37641 - Liverpool Street Station <> #).

AVAILABILITY:	At any time.
OPERATING RESTRICTIONS:	<b>Turning Point Only - Buses must not stand</b>
BLIND DISPLAY:	Liverpool Street.

### **ST. PAUL'S STATION, KING EDWARD STREET (from Homerton Hospital)**

Public stand for four buses on west side of King Edward Street, commencing 45 metres north of northern kerb line of Angel Street and extending 45 metres south.

Buses proceed from Newgate Street via King Edward Street to stand, departing via King Edward Street, Little Britain, Montague Street, Museum Of London Roundabout and St Martin's Le Grand to Cheapside. Set down in Newgate Street, at Stop SQ (BP3442 - St Paul's Station <>), Last Stop on LOR: BP3442 - St Paul's Station <>) and pick up in Cheapside, SY (BP5575 - St Paul's Station <>), First Stop on LOR: BP5575 - St Paul's Station <>).

AVAILABILITY: At any time.  
OPERATING RESTRICTIONS: Unscheduled curtailments only.  
MEAL RELIEFS: No meal relief vehicles to stand at any time.  
FERRY VEHICLES: No ferry vehicles to park on stand at any time.  
BLIND DISPLAY: St. Paul's.

### **HOLBORN CIRCUS, CHARTERHOUSE STREET [SOUTH SIDE] (from Homerton Hospital)**

Public stand for four buses on south side of Charterhouse Street commencing 8 metres east of Ely Place and extending 44 metres east.

Buses proceed from Holborn Viaduct via Snow Hill, West Smithfield, Farringdon Street and Charterhouse Street to stand, departing via Charterhouse Street and Holborn Circus to Holborn Viaduct. Set down in Holborn Viaduct, at Stop HK (1156 - City Thameslink Station #, Last Stop on LOR: 1156 - City Thameslink Station #) and pick up in Holborn Viaduct, at Stop K (2018 - Holborn Circus, First Stop on LOR: 2018 - Holborn Circus).

AVAILABILITY: At any time.  
OPERATING RESTRICTIONS: Unscheduled curtailments only.  
MEAL RELIEFS: No meal relief vehicles to stand at any time.  
FERRY VEHICLES: No ferry vehicles to park on stand at any time.  
BLIND DISPLAY: City Thameslink.

### **BLOOMSBURY, RED LION SQUARE (from Homerton Hospital)**

Public stand for two buses on east side of Procter Street commencing 2 metres from the southern arm of Red Lion Square, extending 20 metres north.

Buses proceed from High Holborn via New Oxford Street, Bury Place, Bloomsbury Way, Vernon Place, Theobald's Road, Drake Street and Procter Street to stand, departing to Procter Street. Set down in High Holborn, at Stop Q (20394 - High Holborn, Last Stop on LOR: 20394 - High Holborn) and pick up in Procter Street, at Stop H (33107 - Procter Street, First Stop on LOR: 33107 - Procter Street).

AVAILABILITY: At any time.  
OPERATING RESTRICTIONS: Unscheduled curtailments only.  
MEAL RELIEFS: No meal relief vehicles to stand at any time.  
FERRY VEHICLES: No ferry vehicles to park on stand at any time.  
BLIND DISPLAY: Holborn.

## **TOTTENHAM COURT ROAD STN, ST GILES HIGH STREET NORTH**

Public stand for 3 buses on north side of St. Giles High Street.

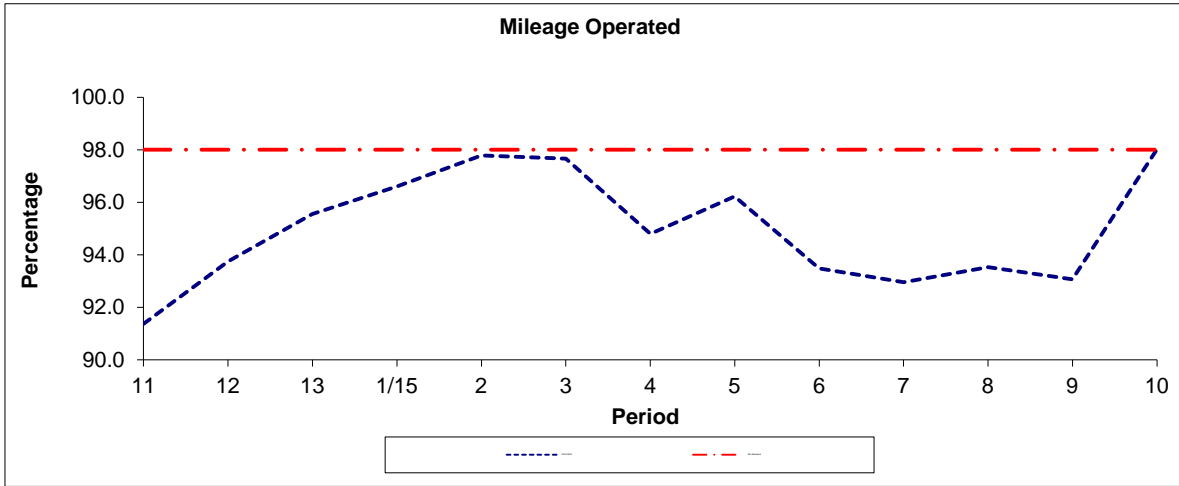
Buses proceed from High Holborn direct to stand, departing via St Giles High Street and Earnshaw Street to New Oxford Street. Set down in High Holborn (BP4925 - St Giles High Street, Last Stop on LOR: BP1340 - Drury Lane) and pick up in New Oxford Street, at Stop Y (BP882 - Tottenham Court Rd Stn <> / New Oxford Street, First Stop on LOR: 14456 - New Oxford Street).

AVAILABILITY:	At any time.
OPERATING RESTRICTIONS:	No more than 2 buses on Route 242 should be scheduled to stand at any one time.
MEAL RELIEFS:	No meal relief vehicles to stand at any time.
FERRY VEHICLES:	No ferry vehicles to park on stand at any time.
BLIND DISPLAY:	Tottenham Court Road.

**PART B - PERFORMANCE STATISTICS**

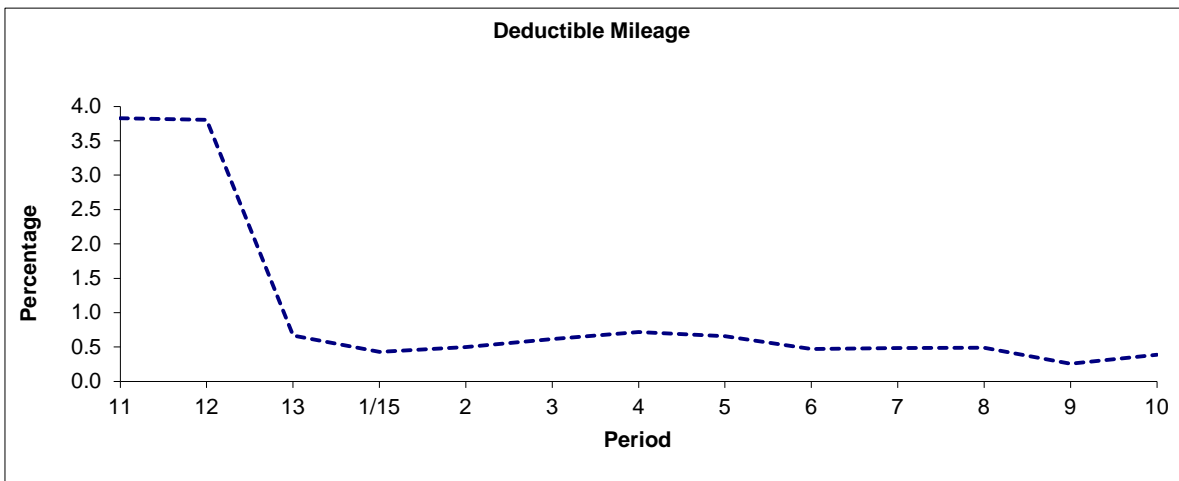
**Route 242**

**Mileage Operated**



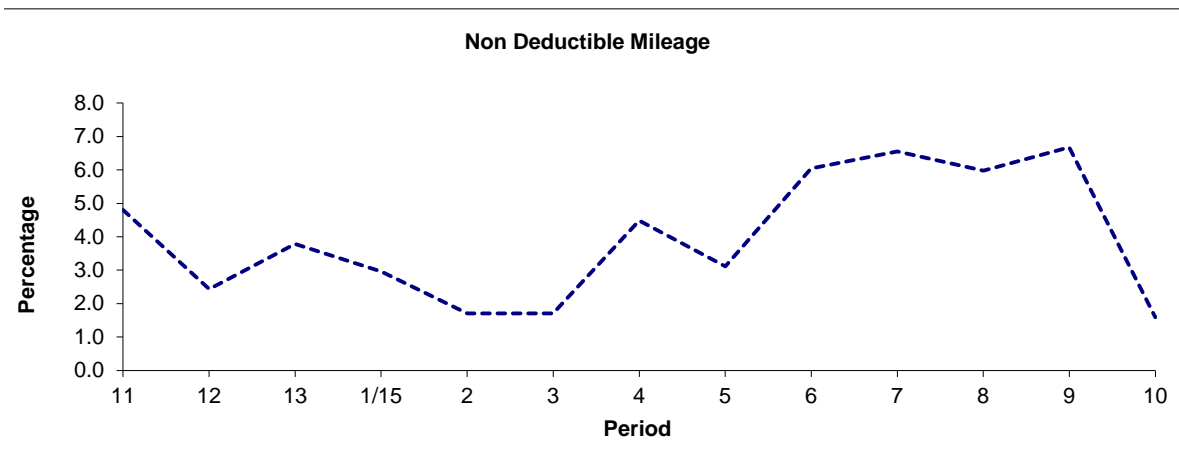
Period	11	12	13	1/15	2	3	4	5	6	7	8	9	10
2014/2015	91.38	93.76	95.55	96.61	97.79	97.67	94.80	96.23	93.48	92.97	93.53	93.07	98.02
Min Standard	98.00	98.00	98.00	98.00	98.00	98.00	98.00	98.00	98.00	98.00	98.00	98.00	98.00

**Deductible Mileage**



Period	11	12	13	1/15	2	3	4	5	6	7	8	9	10
2014/2015	3.83	3.80	0.67	0.43	0.50	0.62	0.72	0.66	0.47	0.49	0.49	0.26	0.39

**Non Deductible Mileage**



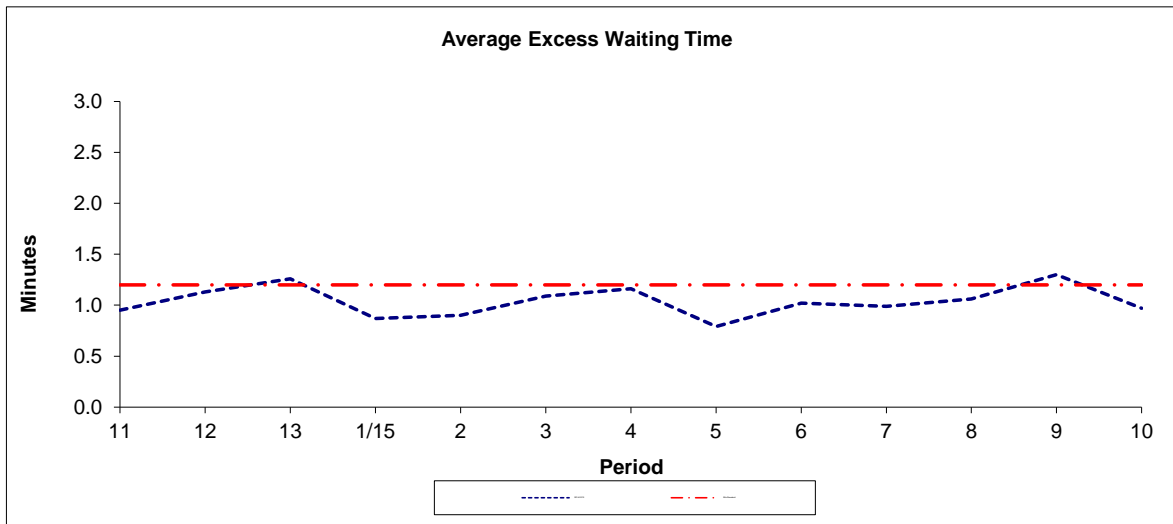
Period	11	12	13	1/15	2	3	4	5	6	7	8	9	10
2014/2015	4.80	2.44	3.78	2.97	1.71	1.71	4.48	3.11	6.05	6.55	5.98	6.68	1.59

**Note :** Mileage is based on 4 weeks data  
 Deductible Mileage was adversely affected by industrial action in periods 11 and 12 14/15.

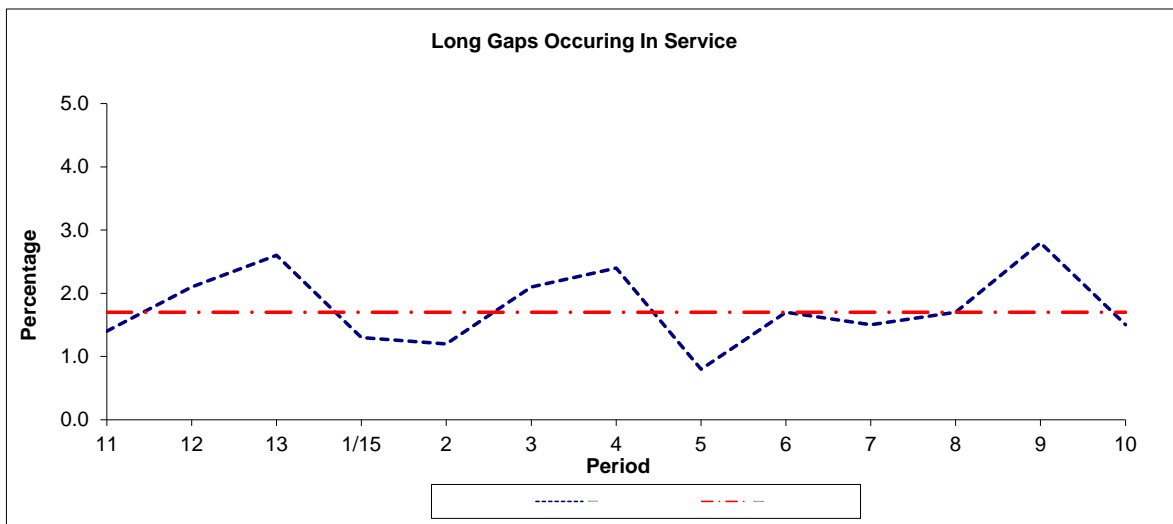


**PART B - PERFORMANCE STATISTICS**

**Route 242**



Period	11	12	13	1/15	2	3	4	5	6	7	8	9	10
2014-2015	0.95	1.13	1.26	0.87	0.90	1.09	1.16	0.79	1.02	0.99	1.06	1.30	0.97
Min Standard	1.20	1.20	1.20	1.20	1.20	1.20	1.20	1.20	1.20	1.20	1.20	1.20	1.20

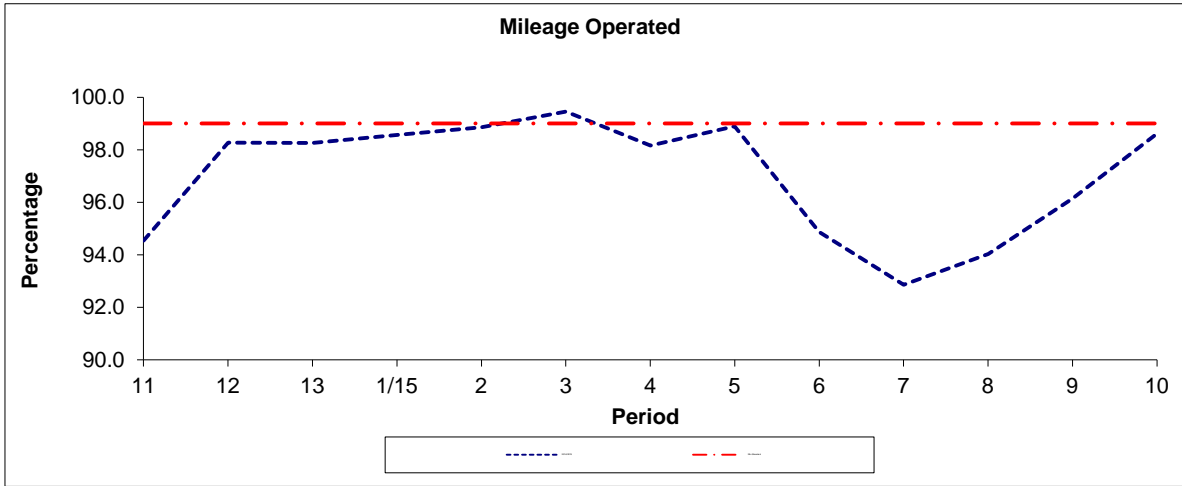


Period	11	12	13	1/15	2	3	4	5	6	7	8	9	10
2014-2015	1.4	2.1	2.6	1.3	1.2	2.1	2.4	0.8	1.7	1.5	1.7	2.8	1.5
Benchmark	1.7	1.7	1.7	1.7	1.7	1.7	1.7	1.7	1.7	1.7	1.7	1.7	1.7

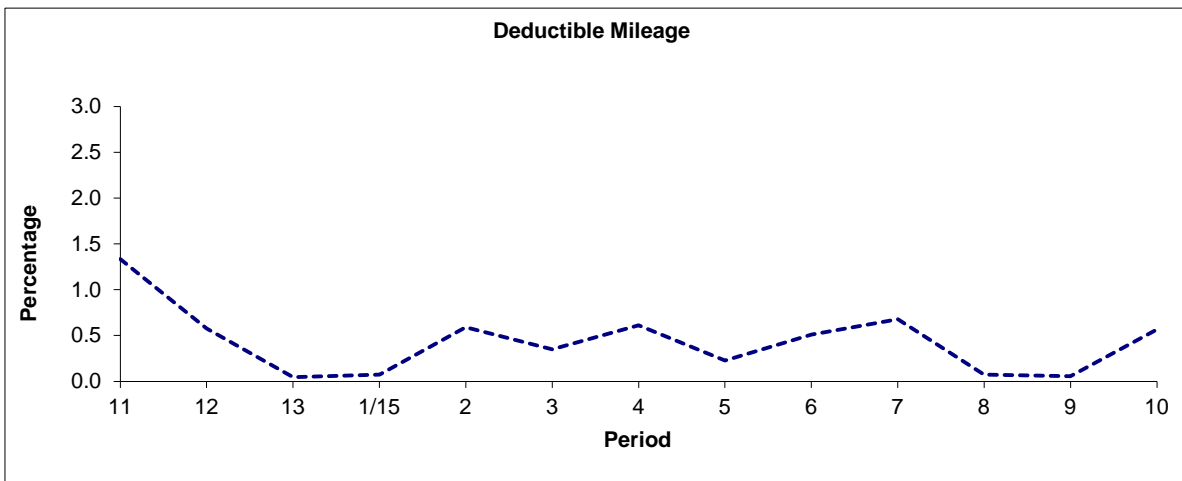
**Note :** Reliability is actual performance under full iBus (4 weeks data).  
 Minimum Standards and Benchmarks are those applicable under the new contract.

**PART B - PERFORMANCE STATISTICS**

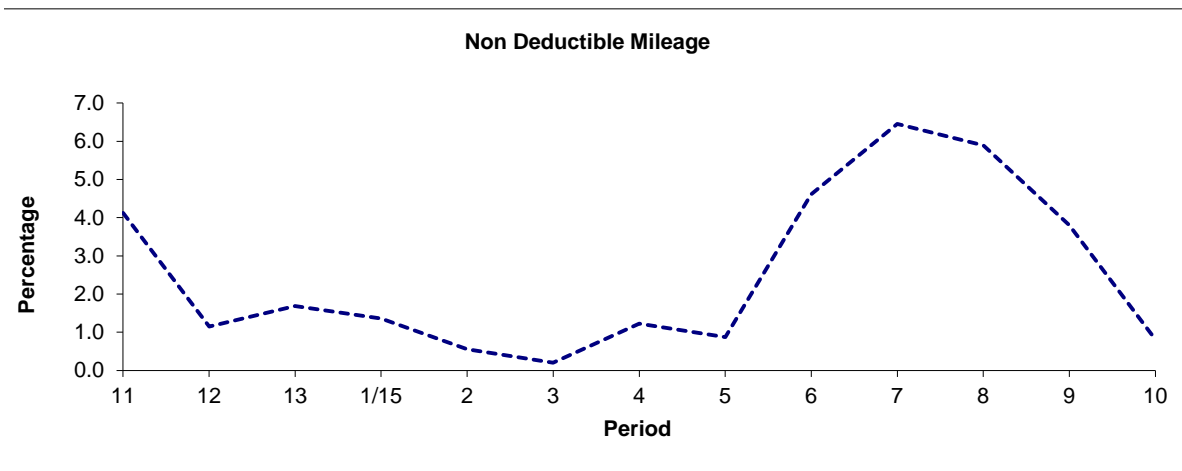
**Route N242**



Period	11	12	13	1/15	2	3	4	5	6	7	8	9	10
2014/2015	94.54	98.27	98.27	98.56	98.86	99.45	98.16	98.90	94.88	92.87	94.04	96.14	98.62
Min Standard	99.00	99.00	99.00	99.00	99.00	99.00	99.00	99.00	99.00	99.00	99.00	99.00	99.00



Period	11	12	13	1/15	2	3	4	5	6	7	8	9	10
2014/2015	1.33	0.58	0.05	0.07	0.59	0.35	0.61	0.23	0.51	0.68	0.08	0.06	0.57

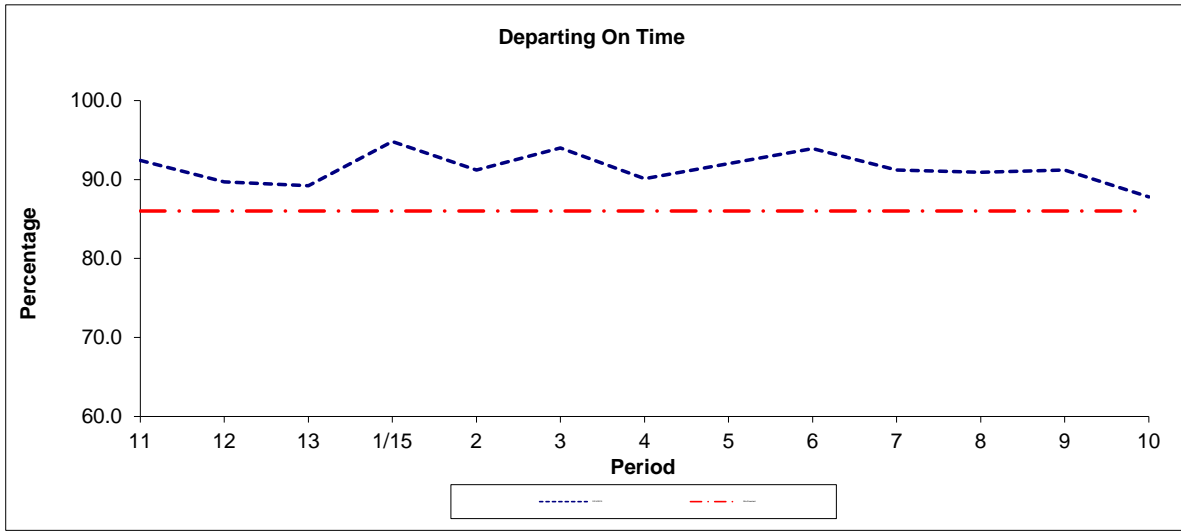


Period	11	12	13	1/15	2	3	4	5	6	7	8	9	10
2014/2015	4.12	1.15	1.69	1.36	0.55	0.20	1.23	0.87	4.61	6.46	5.89	3.81	0.82

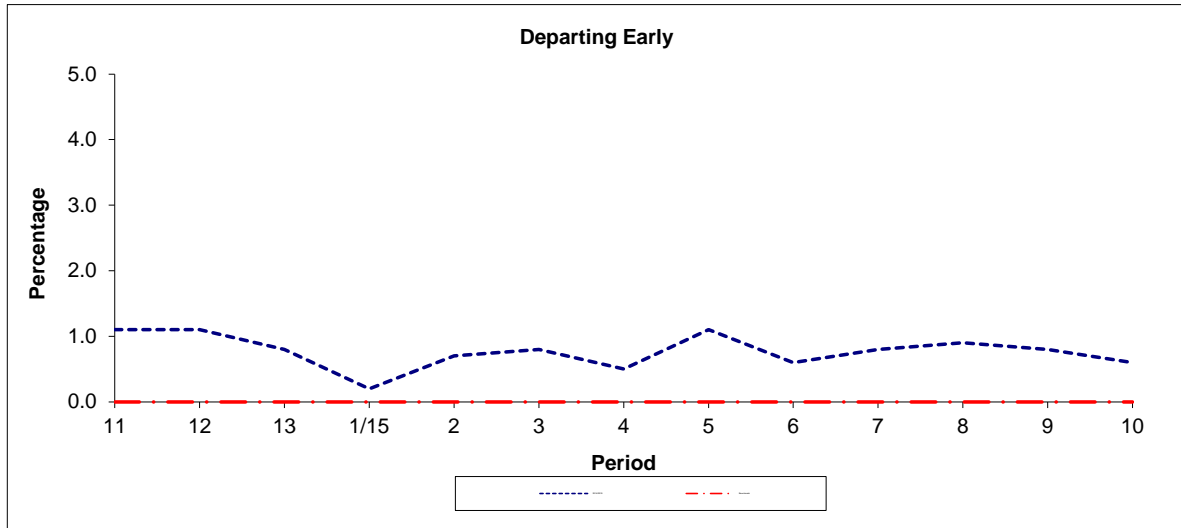
**Note :** Mileage is based on 4 weeks data  
 Deductible Mileage was adversely affected by industrial action in periods 11 and 12 14/15.

**PART B - PERFORMANCE STATISTICS**

**Route N242**



Period	11	12	13	1/15	2	3	4	5	6	7	8	9	10
2014/2015	92.4	89.7	89.2	94.8	91.2	94.0	90.1	92.0	93.9	91.2	90.9	91.2	87.8
Min Standard	86.0	86.0	86.0	86.0	86.0	86.0	86.0	86.0	86.0	86.0	86.0	86.0	86.0



Period	11	12	13	1/15	2	3	4	5	6	7	8	9	10
2014/2015	1.1	1.1	0.8	0.2	0.7	0.8	0.5	1.1	0.6	0.8	0.9	0.8	0.6
Benchmark	0.0	0.0	0.0	0.0	0.0	0.0	0.0	0.0	0.0	0.0	0.0	0.0	0.0

**Note :** Reliability is actual performance under full iBus (4 weeks data).  
 Minimum Standards and Benchmarks are those applicable under the new contract.

**ROUTE 242 - FULL iBUS RESULTS BY TIME OF DAY  
 QUARTER 4 14/15 TO QUARTER 3 15/16 (03/01/15 - 08/01/16)**

**MONDAY - FRIDAY**

Time Range	Expected Buses	Observed Buses	Observed Buses (%)	SWT (mins)	EWT (mins)	AWT (mins)	Probability of Waiting < 10 mins (%)	Probability of Waiting 10-20 mins (%)	Probability of Waiting 20-30 mins (%)	Probability of Waiting > 30 mins (%)	Long Gaps (%)	Maximum Gap (mins)
05:00 - 07:00	32,347.	30,725.	95.0	4.45	<b>0.84</b>	5.29	88.5	11.2	0.3	0.0	0.7	33
07:00 - 10:00	84,661.	82,570.	97.5	3.64	<b>1.15</b>	4.78	90.3	9.2	0.4	0.1	2.4	69
10:00 - 13:00	78,548.	77,080.	98.1	3.86	<b>1.03</b>	4.89	90.3	9.1	0.5	0.1	1.8	59
13:00 - 16:00	75,526.	74,753.	99.0	3.97	<b>0.95</b>	4.92	90.3	9.2	0.4	0.1	1.5	60
16:00 - 19:00	76,977.	74,468.	96.7	3.95	<b>1.11</b>	5.06	89.3	10.0	0.6	0.1	2.0	55
19:00 - 22:00	70,500.	69,892.	99.1	4.19	<b>1.14</b>	5.33	86.4	12.7	0.7	0.1	2.1	59
22:00 - 24:00	39,646.	38,839.	98.0	5.00	<b>1.16</b>	6.16	81.4	17.2	1.2	0.3	1.5	54
<b>Locations</b>	<b>458,205.</b>	<b>448,327.</b>	<b>97.8</b>	<b>3.96</b>	<b>1.07</b>	<b>5.03</b>	<b>89.2</b>	<b>10.1</b>	<b>0.5</b>	<b>0.1</b>	<b>1.9</b>	<b>69</b>

**SATURDAY**

Time Range	Expected Buses	Observed Buses	Observed Buses (%)	SWT (mins)	EWT (mins)	AWT (mins)	Probability of Waiting < 10 mins (%)	Probability of Waiting 10-20 mins (%)	Probability of Waiting 20-30 mins (%)	Probability of Waiting > 30 mins (%)	Long Gaps (%)	Maximum Gap (mins)
05:00 - 07:00	4,803.	4,829.	100.5	6.00	<b>0.40</b>	6.40	80.6	19.0	0.4	0.0	0.2	30
07:00 - 10:00	15,068.	14,762.	98.0	4.23	<b>0.78</b>	5.02	90.0	9.6	0.3	0.0	0.9	36
10:00 - 13:00	16,952.	16,739.	98.7	3.70	<b>0.85</b>	4.55	92.9	6.7	0.3	0.1	1.3	57
13:00 - 16:00	16,400.	16,032.	97.8	3.76	<b>1.16</b>	4.93	89.7	9.6	0.6	0.1	2.3	43
16:00 - 19:00	16,491.	15,848.	96.1	3.79	<b>1.28</b>	5.07	88.1	11.1	0.7	0.1	2.7	53
19:00 - 22:00	13,100.	12,845.	98.1	4.69	<b>1.45</b>	6.14	80.5	17.5	1.7	0.3	2.6	70
22:00 - 24:00	8,078.	7,492.	92.7	5.00	<b>1.75</b>	6.75	74.9	21.8	2.5	0.7	3.3	48
<b>Locations</b>	<b>90,892.</b>	<b>88,547.</b>	<b>97.4</b>	<b>4.06</b>	<b>1.13</b>	<b>5.19</b>	<b>87.8</b>	<b>11.3</b>	<b>0.8</b>	<b>0.2</b>	<b>2.1</b>	<b>70</b>

**SUNDAY AND BANK HOLIDAYS**

Time Range	Expected Buses	Observed Buses	Observed Buses (%)	SWT (mins)	EWT (mins)	AWT (mins)	Probability of Waiting < 10 mins (%)	Probability of Waiting 10-20 mins (%)	Probability of Waiting 20-30 mins (%)	Probability of Waiting > 30 mins (%)	Long Gaps (%)	Maximum Gap (mins)
05:00 - 07:00	4,625.	4,508.	97.5	7.37	<b>0.54</b>	7.91	69.0	29.0	1.8	0.3	0.5	56
07:00 - 10:00	12,029.	11,958.	99.4	5.77	<b>0.66</b>	6.43	80.1	19.3	0.6	0.1	0.2	60
10:00 - 13:00	14,463.	14,279.	98.7	4.90	<b>0.59</b>	5.49	87.6	12.2	0.2	0.0	0.3	37
13:00 - 16:00	14,262.	14,181.	99.4	4.97	<b>0.71</b>	5.69	86.0	13.4	0.5	0.1	0.6	51
16:00 - 19:00	14,550.	14,221.	97.7	4.93	<b>0.89</b>	5.83	85.0	14.0	0.6	0.3	1.0	76
19:00 - 22:00	14,614.	14,616.	100.0	4.88	<b>0.99</b>	5.87	83.7	15.5	0.7	0.1	0.9	59
22:00 - 24:00	9,530.	9,428.	98.9	5.05	<b>0.63</b>	5.68	85.7	14.0	0.3	0.0	0.3	32
<b>Locations</b>	<b>84,073.</b>	<b>83,191.</b>	<b>99.0</b>	<b>5.08</b>	<b>0.75</b>	<b>5.83</b>	<b>84.8</b>	<b>14.6</b>	<b>0.5</b>	<b>0.1</b>	<b>0.6</b>	<b>76</b>

**ALL DAYS**

Time Range	Expected Buses	Observed Buses	Observed Buses (%)	SWT (mins)	EWT (mins)	AWT (mins)	Probability of Waiting < 10 mins (%)	Probability of Waiting 10-20 mins (%)	Probability of Waiting 20-30 mins (%)	Probability of Waiting > 30 mins (%)	Long Gaps (%)	Maximum Gap (mins)
05:00 - 07:00	41,775.	40,062.	95.9	4.81	<b>0.78</b>	5.59	86.3	13.2	0.4	0.0	0.6	56
07:00 - 10:00	111,758.	109,290.	97.8	3.79	<b>1.09</b>	4.89	89.7	9.8	0.4	0.1	2.2	69
10:00 - 13:00	109,963.	108,098.	98.3	3.96	<b>0.94</b>	4.91	90.4	9.1	0.4	0.1	1.6	59
13:00 - 16:00	106,188.	104,966.	98.8	4.06	<b>0.95</b>	5.01	89.7	9.7	0.5	0.1	1.5	60
16:00 - 19:00	108,018.	104,537.	96.8	4.03	<b>1.11</b>	5.14	88.7	10.5	0.6	0.1	2.0	76
19:00 - 22:00	98,214.	97,353.	99.1	4.34	<b>1.17</b>	5.51	85.3	13.7	0.9	0.1	2.1	70
22:00 - 24:00	57,254.	55,759.	97.4	5.01	<b>1.18</b>	6.19	80.9	17.5	1.3	0.3	1.6	54
<b>Locations</b>	<b>633,170.</b>	<b>620,065.</b>	<b>97.9</b>	<b>4.09</b>	<b>1.04</b>	<b>5.13</b>	<b>88.6</b>	<b>10.7</b>	<b>0.6</b>	<b>0.1</b>	<b>1.8</b>	<b>76</b>

**ROUTE N242 - FULL iBUS RESULTS BY TIME OF DAY**  
**QUARTER 4 14/15 TO QUARTER 3 15/16 (03/01/15 - 08/01/16)**

**MONDAY - FRIDAY**

Time Range	Expected Buses	Observed Buses	Observed Buses (%)	Linked Buses (%)	On Time (%)	Non Arrival / Not Linked (%)	Early (%)	Late (%)
00:00 - 05:00	34,633.	34,275.	99.0	99.2	96.9	1.0	0.6	1.5
<b>All Locations</b>	<b>34,633.</b>	<b>34,275.</b>	<b>99.0</b>	<b>99.2</b>	<b>96.9</b>	<b>1.0</b>	<b>0.6</b>	<b>1.5</b>

**SATURDAY**

Time Range	Expected Buses	Observed Buses	Observed Buses (%)	Linked Buses (%)	On Time (%)	Non Arrival / Not Linked (%)	Early (%)	Late (%)
00:00 - 05:00	9,351.	9,179.	98.2	97.7	87.7	2.6	1.0	8.8
<b>All Locations</b>	<b>9,351.</b>	<b>9,179.</b>	<b>98.2</b>	<b>97.7</b>	<b>87.7</b>	<b>2.6</b>	<b>1.0</b>	<b>8.8</b>

**SUNDAY AND BANK HOLIDAYS**

Time Range	Expected Buses	Observed Buses	Observed Buses (%)	Linked Buses (%)	On Time (%)	Non Arrival / Not Linked (%)	Early (%)	Late (%)
00:00 - 05:00	9,985.	9,765.	97.8	96.7	82.4	4.1	1.1	12.4
<b>All Locations</b>	<b>9,985.</b>	<b>9,765.</b>	<b>97.8</b>	<b>96.7</b>	<b>82.4</b>	<b>4.1</b>	<b>1.1</b>	<b>12.4</b>

**ALL DAYS**

Time Range	Expected Buses	Observed Buses	Observed Buses (%)	Linked Buses (%)	On Time (%)	Non Arrival / Not Linked (%)	Early (%)	Late (%)
00:00 - 05:00	53,969.	53,219.	98.6	98.5	91.4	2.1	0.8	5.7
<b>All Locations</b>	<b>53,969.</b>	<b>53,219.</b>	<b>98.6</b>	<b>98.5</b>	<b>91.4</b>	<b>2.1</b>	<b>0.8</b>	<b>5.7</b>

Transport for London -QSI Points and Live Mileage List

v2.0 - Mileage directly imported from Caesar

TRANCHE 552

Route 242 and N242  
 Service change 33377  
 Date 15/06/2013  
 QSI Points are highlighted.

Reason for Issue

Diversion due to The Narrow Way closure

OUT DIRECTION				
Timing Point Code	Stop Number	Stop Name	Metres	Miles
HMTHWS	BP4166	Homerton Hospital / Wardle Street		
	BP3801	Brooksby's Walk / Homerton Station	290	0.18
	BP1819	Chatsworth Road / Clifden Road	323	0.20
	34466	Redwald Road	397	0.25
	34468	Mandeville Street / Gilpin Road	343	0.21
	34470	Mandeville Community Primary School	235	0.15
CLPKMF	BP1820	Millfields Road	292	0.18
	BP1822	Chatsworth Road	368	0.23
	BP1823	Median Road	420	0.26
	931	Lower Clapton Road	274	0.17
	BP3203	Hackney Baths	134	0.08
	2271	Clapton Square	163	0.10
	BP5529	Dalston Lane	331	0.21
HCKCAR	BP4921	Hackney Central Station	417	0.26
	308	Graham Road / Hackney Central	227	0.14
	BP5484	Royal Oak Road	338	0.21
	1115	Greenwood Road	206	0.13
	782	Queensbridge Road / Dalston Lane	286	0.18
DALSJC	BP5193	Dalston Junction Station	340	0.21
	2095	Kingsland Road / Forest Road	374	0.23
	1111	Middleton Road	341	0.21
	BP3454	Haggerston Station / Downham Road	346	0.21
	2103	Laburnum Street	292	0.18
	2105	St Leonard's Hospital	194	0.12
	2107	Hoxton Station / Geffrye Museum	269	0.17
	BP1323	Falkirk Street	195	0.12
	13454	Shoreditch Church	196	0.12
SHORCH	33346	Shoreditch High Street Station	339	0.21
	20803	Commercial Street / Worship Street	349	0.22
	2113	Primrose Street	249	0.15
LVSTBG	2116	Liverpool Street Station	229	0.14
	BP1576	Wormwood Street	297	0.18
	8608	Old Broad Street	326	0.20
BANKSNY	8590	Poultry / Bank Station	422	0.26
	8556	Bread Street	269	0.17
SPLSSN	BP3442	St Paul's Station	273	0.17
	1156	City Thameslink Station	337	0.21
	8571	Holborn Circus	280	0.17
	2019	Holborn Circus / Fetter Lane	165	0.10
	8420	Chancery Lane Station	252	0.16
	1473	Brownlow Street	188	0.12
HOLBSN	1057	Holborn Station	254	0.16
	20394	High Holborn	212	0.13
	BP1340	Drury Lane	222	0.14
TCTRS G	BP4925	St Giles High Street	241	0.15
Total Route Mileage - Out Direction			12495	7.76
			Metres	Miles

BACK DIRECTION				
Timing Point Code	Stop Number	Stop Name	Metres	Miles
TCTRNO	14456	New Oxford Street		
	29844	Museum Street	264	0.16
HOLBSN	33107	Procter Street	491	0.31
	8419	Brownlow Street	341	0.21
	1472	Chancery Lane Station	209	0.13
	20628	Holborn Circus / Fetter Lane	182	0.11
	2018	Holborn Circus	250	0.16
	1157	City Thameslink Station	182	0.11
SPLSSN	8586	King Edward Street	301	0.19
	BP5575	St Paul's Station	464	0.29
BANKSNY	10352	Bank Station / Poultry	300	0.19
	8606	Bank Station / Threadneedle Street	266	0.17
	8607	Old Broad Street	190	0.12
	BP1575	Wormwood Street	305	0.19
LVSTBG	37641	Liverpool Street Station	292	0.18
	2114	Primrose Street	224	0.14
	4816	Shoreditch High Street Station	266	0.17
	BP3476	Shoreditch High St / Bethnal Green Rd	252	0.16
SHORCH	BP3475	Shoreditch Church	188	0.12
	29596	Kingsland Road / Waterson Street	293	0.18
	2108	Hoxton Station / Geffrye Museum	128	0.08
	BP4547	Pearson Street	355	0.22
	2104	St Leonard's Hospital	130	0.08
	36853	Laburnum Street	176	0.11
	29730	Haggerston Station / Downham Road	290	0.18
	4670	Middleton Road	359	0.22
	2096	Dalston Junction Station	345	0.21
DALSJC	14219	Dalston Lane / Dalston Junction Station	325	0.20
	783	Graham Road / Stannard Road	414	0.26
	1114	Greenwood Road	272	0.17
	2648	Royal Oak Road	261	0.16
	20997	Mare Street	316	0.20
HCKCAR	37257	Hackney Central Station	246	0.15
	129	Amhurst Road / Hackney Downs Station	138	0.09
	35675	Clarence Road / Narrow Way	365	0.23
	33707	Hackney Baths	269	0.17
	29522	Powerscroft Road / Lower Clapton Road	333	0.21
	BP1824	Chatsworth Road	475	0.30
CLPKMF	34838	Millfields Road / Clapton Park	256	0.16
	34472	Oswald Street	321	0.20
	34469	Mandeville Street	265	0.16
	34467	Daubeney Road	267	0.17
	34465	Redwald Road	295	0.18
	BP1825	Brooksby's Walk	387	0.24
HMTTHG	BP1818	Homerton Hospital	252	0.16
Total Route Mileage - Back Direction			12500	7.77
			Metres	Miles

Transport for London -QSI Points and Live Mileage List

v2.0 - Mileage directly imported from Caesar

**TRANCHE 552**  
Homerton Hospital - St.Paul's

Route 242 and N242 (OPTION 2)  
Service change 33377  
Date 15/06/2013

Reason for Issue

Diversion due to The Narrow Way closure

QSI Points are highlighted.

OUT DIRECTION				
Timing Point Code	Stop Number	Stop Name	Metres	Miles
HMTHWS	BP4166	Homerton Hospital / Wardle Street		
	BP3801	Brooksby's Walk / Homerton Station	290	0.18
	BP1819	Chatsworth Road / Clifden Road	323	0.20
	34466	Redwald Road	397	0.25
	34468	Mandeville Street / Gilpin Road	343	0.21
	34470	Mandeville Community Primary School	235	0.15
CLPKMF	BP1820	Millfields Road	292	0.18
	BP1822	Chatsworth Road	368	0.23
	BP1823	Median Road	420	0.26
	931	Lower Clapton Road	274	0.17
	BP3203	Hackney Baths	134	0.08
	2271	Clapton Square	163	0.10
	BP5529	Dalston Lane	331	0.21
HCKCAR	BP4921	Hackney Central Station	417	0.26
	308	Graham Road / Hackney Central	227	0.14
	BP5484	Royal Oak Road	338	0.21
	1115	Greenwood Road	206	0.13
	782	Queensbridge Road / Dalston Lane	286	0.18
DALSJC	BP5193	Dalston Junction Station	340	0.21
	2095	Kingsland Road / Forest Road	374	0.23
	1111	Middleton Road	341	0.21
	BP3454	Haggerston Station / Downham Road	346	0.21
	2103	Laburnum Street	292	0.18
	2105	St Leonard's Hospital	194	0.12
	2107	Hoxton Station / Geffrye Museum	269	0.17
	BP1323	Falkirk Street	195	0.12
	13454	Shoreditch Church	196	0.12
SHORCH	33346	Shoreditch High Street Station	339	0.21
	20803	Commercial Street / Worship Street	349	0.22
	2113	Primrose Street	249	0.15
LVSTBG	2116	Liverpool Street Station	229	0.14
	BP1576	Wormwood Street	297	0.18
	8608	Old Broad Street	326	0.20
BANKS NY	8590	Poultry / Bank Station	422	0.26
	8556	Bread Street	269	0.17
	35432	St Paul's Station	232	0.14
SPLSKE	BP5593	King Edward Street	189	0.12
Total Route Mileage - Out Direction			10492	6.52
			Metres	Miles

BACK DIRECTION				
Timing Point Code	Stop Number	Stop Name	Metres	Miles
BARTMS	BP5594	Little Britain		
	BP5575	St Paul's Station	543	0.34
BANKS NY	10352	Bank Station / Poultry	300	0.19
	8606	Bank Station / Threadneedle Street	266	0.17
	8607	Old Broad Street	190	0.12
	BP1575	Wormwood Street	305	0.19
LVSTBG	37641	Liverpool Street Station	292	0.18
	2114	Primrose Street	224	0.14
	4816	Shoreditch High Street Station	266	0.17
	BP3476	Shoreditch High St / Bethnal Green Rd	252	0.16
SHORCH	BP3475	Shoreditch Church	188	0.12
	29596	Kingsland Road / Waterson Street	293	0.18
	2108	Hoxton Station / Geffrye Museum	128	0.08
	BP4547	Pearson Street	355	0.22
	2104	St Leonard's Hospital	130	0.08
	36853	Laburnum Street	176	0.11
	29730	Haggerston Station / Downham Road	290	0.18
	4670	Middleton Road	359	0.22
	2096	Dalston Junction Station	345	0.21
DALSJC	14219	Dalston Lane / Dalston Junction Station	325	0.20
	783	Graham Road / Sannard Road	414	0.26
	1114	Greenwood Road	272	0.17
	2648	Royal Oak Road	261	0.16
	20997	Mare Street	316	0.20
HCKCAR	37257	Hackney Central Station	246	0.15
	129	Amhurst Road / Hackney Downs Station	138	0.09
	35675	Clarence Road / Narrow Way	365	0.23
	33707	Hackney Baths	269	0.17
	29522	Powerscroft Road / Lower Clapton Road	333	0.21
	BP1824	Chatsworth Road	475	0.30
CLPKMF	34838	Millfields Road / Clapton Park	256	0.16
	34472	Oswald Street	321	0.20
	34469	Mandeville Street	265	0.16
	34467	Daubeney Road	267	0.17
	34465	Redwald Road	295	0.18
	BP1825	Brooksby's Walk	387	0.24
HMT HHG	BP1818	Homerton Hospital	252	0.16
Total Route Mileage - Back Direction			10359	6.44
			Metres	Miles