

MINI SERVICE SPECIFICATION

Route Number	388
Terminus Points	Stratford City Bus Station and Liverpool Street Bus Station
Minimum Performance Standard	Average Excess Wait Time - No more than 1.00 minutes
Extension Threshold	Average Excess Wait Time Threshold - 0.90 minutes
Minimum Operated Mileage Standard	No less than 98%

Please supply details of resource and cost changes (in ITT Part 2B and Part 10 format). The return date will be notified in due course.

MINI SERVICE SPECIFICATION

- 1) MINI SERVICE SPEC - ROUTE SPECIFICATION INFORMATION
- 2) NOTES
- 3) SCHEDULE REQUIREMENTS & PINCHPOINTS
- 4) ROUTE RECORD, IBUS MILEAGE & QSI POINTS

2) NOTES

Proposed Changes:

To better match resource to demand the following alterations are proposed for introduction:

- Route No. 388 is re-structured to operate between Stratford City Bus Station and Liverpool Street Bus Station.
- The section of routeing between Elephant & Castle Station and Liverpool Street Station is withdrawn.
- **Please see Section 4 for a full list of streets traversed and standing arrangements.**
- **No other changes are proposed.**
- **The above proposals as well as the proposals specified for Route Nos. 35, 40, 45, 46 and 343 are specified in order to provide a more efficient network of services and meet passenger demand in the Central London area.**

3) SCHEDULE REQUIREMENTS & PINCHPOINTS

3.1) MONDAY TO FRIDAY SCHEDULE REQUIREMENTS & PINCHPOINTS

Stratford City Bus Station to Liverpool Street Bus Station			Liverpool Street Bus Station to Stratford City Bus Station		
First departure no later than 0530.			First departure no later than 0600.		
0525 - 2355	Every 12 minutes		0555 - 0105	Every 12 minutes	
Last departure no earlier than 2350.			Last departure no earlier than 0100.		
Pinchpoints					
Cambridge Heath Station	0655 - 0855	12 minutes	Cambridge Heath Station	0730 - 0900	12 minutes
	1500 - 1630	12 minutes		1500 - 1630	12 minutes

3.2) SATURDAY AND GOOD FRIDAY SCHEDULE REQUIREMENTS & PINCHPOINTS

Stratford City Bus Station to Liverpool Street Bus Station			Liverpool Street Bus Station to Stratford City Bus Station		
First departure no later than 0530.			First departure no later than 0600.		
0525 - 0630	Every 15 minutes		0555 - 0715	Every 15 minutes	
0631 - 2355	Every 12 minutes		0716 - 0105	Every 12 minutes	
Last departure no earlier than 2350.			Last departure no earlier than 0100.		
Pinchpoints					
Cambridge Heath Station	0920 - 1100	12 minutes	Cambridge Heath Station	0910 - 1100	12 minutes

3.3) SUNDAY AND PUBLIC HOLIDAYS (EXCEPT GOOD FRIDAY AND CHRISTMAS DAY) SCHEDULE REQUIREMENTS & PINCHPOINTS

Stratford City Bus Station to Liverpool Street Bus Station			Liverpool Street Bus Station to Stratford City Bus Station		
First departure no later than 0530.			First departure no later than 0600.		
0525 - 0630	Every 20 minutes		0555 - 0715	Every 20 minutes	
0631 - 1000	Every 15 minutes		0716 - 1030	Every 15 minutes	
1001 - 2355	Every 12 minutes		1031 - 0105	Every 12 minutes	
Last departure no earlier than 2350.			Last departure no earlier than 0100.		
Pinchpoints					
Cambridge Heath Station	1030 - 1130	12 minutes	Cambridge Heath Station	1050 - 1150	12 minutes

Please identify the cost of the Boxing Day element of this service separately.

4) ROUTE RECORD, IBUS MILEAGE & QSI POINTS

4.1) ROUTE RECORD
As per Busnet printout.

4.2) IBUS MILEAGE & QSI POINTS
As per current print out.

LONDON BUSES - ROUTE DESCRIPTION

ROUTE 388: Stratford City Bus Station - Liverpool Street Station

Date of Structural Change: 18 May 2019.

Date of Service Change: 18 May 2019.

Reason for Issue: Service restructured to operate between Stratford City and Liverpool Street.

STREETS TRAVERSED

Towards Liverpool Street Station: Stratford City Bus Station, Montfichet Road, Westfield Avenue, Waterden Road, Lesney Avenue, Eastway, Wick Road, Victoria Park Road, Mare Street, Cambridge Heath Road, Bethnal Green Road, Shoreditch High Street, Norton Folgate, Bishopsgate.

Towards Stratford City Bus Station: Bishopsgate, Norton Folgate, Shoreditch High Street, Bethnal Green Road, Cambridge Heath Road, Mare Street, Well Street, Cassland Road, Wick Road, Eastway, Lesney Avenue, Waterden Road, Westfield Avenue, Montfichet Road.

AUTHORISED STANDS, CURTAILMENT POINTS, & BLIND DESCRIPTIONS

Please note that only stands, curtailment points, & blind descriptions as detailed in this contractual document may be used.

STRATFORD CITY BUS STATION

Private stand for 13 buses in marked bays in bus station.

Buses proceed from Montfichet Road via Stratford City Bus Station to stand, departing to Stratford City Bus Station. Set down in Montfichet Road, at stop S (BP5605 - Stratford City Bus Station, Last Stop on LOR: BP5605 - Stratford City Bus Station) and pick up in Stratford City Bus Station, at stop W (BP5603 - Stratford City Bus Station, First Stop on LOR: BP5603 - Stratford City Bus Station).

AVAILABILITY: At any time.

OPERATING RESTRICTIONS: No more than 2 buses on Route 388 should be scheduled to stand at any one time.

MEAL RELIEFS: No meal relief vehicles to stand at any time.

FERRY VEHICLES: No ferry vehicles to park on stand at any time.

BLIND DISPLAY: Stratford City.

HACKNEY WICK, CHAPMAN ROAD (from LIVERPOOL STREET STATION)

Buses proceed from Cassland Road via Wick Road, Chapman Road, Trowbridge Road, Chapman Road and Wick Road departing to Victoria Park Road. Set down in Cassland Road, at Stop H (14134 - Wick Road, Last Stop on LOR: 14134 - Wick Road) and pick up in Victoria Park Road, at Stop SJ (BP3684 - Brookfield Road, First Stop on LOR: BP3684 - Brookfield Road).

AVAILABILITY: At any time.
OPERATING RESTRICTIONS: **Turning Point Only - Buses must not stand**
BLIND DISPLAY: Hackney Wick.

LAURISTON ROAD, CHURCH CRESCENT (from LIVERPOOL STREET STATION)

Public off side stand for one bus on west side of Church Crescent commencing 11 metres north of lamp standard Z2 extending 13 metres north.

Buses proceed from Well Street via Cassland Road, Terrace Road and Church Crescent to stand, departing via Church Crescent and Lauriston Road to Victoria Park Road. Set down in Well Street, at Stop D (14466 - Holcroft Road, Last Stop on LOR: 14466 - Holcroft Road) and pick up in Victoria Park Road, at Stop SM (BP3687 - Lauriston Road, First Stop on LOR: BP3687 - Lauriston Road).

AVAILABILITY: At any time.
OPERATING RESTRICTIONS: Unscheduled curtailments only.
MEAL RELIEFS: No meal relief vehicles to stand at any time.
FERRY VEHICLES: No ferry vehicles to park on stand at any time.
BLIND DISPLAY: South Hackney, Church Crescent.

CAMBRIDGE HEATH, ASH GROVE GARAGE (from LIVERPOOL STREET STATION)

Private stand on forecourt of Ash Grove Bus Garage.

Buses proceed from Mare Street via Ash Grove and Ash Grove Garage to stand, departing via Ash Grove Garage, Ash Grove and Mare Street to Cambridge Heath Road. Set down in Mare Street, at Stop R (2277 - Mare Street / Victoria Park Road, Last Stop on LOR: 2277 - Mare Street / Victoria Park Road) and pick up in Cambridge Heath Road, at Stop P (7570 - Cambridge Heath Station #, First Stop on LOR: 7570 - Cambridge Heath Station #).

AVAILABILITY: At any time.
OPERATING RESTRICTIONS: Unscheduled curtailments only.
MEAL RELIEFS: No meal relief vehicles to stand at any time.
FERRY VEHICLES: No ferry vehicles to park on stand at any time.
BLIND DISPLAY: Ash Grove.

ALDGATE BUS STATION

Private stand for 16 buses in marked bays in Aldgate Bus Station on south side of Aldgate High Street.

Buses proceed from Bishopsgate via Camomile Street, Outwich Street, Houndsditch, St Botolph Street, Aldgate High Street, Minories and Aldgate Bus Station to stand, departing via Aldgate Bus Station, Aldgate High Street, St Botolph Street, Duke's Place, Bevis Marks and Camomile Street to Bishopsgate. Set down in Bishopsgate, At Stop L (2116 - Liverpool Street Station < #, Last Stop on LOR: 2116 - Liverpool Street Station < #) and pick up in Bishopsgate, At Stop F (768 - Liverpool Street Station < #, First Stop on LOR: 768 - Liverpool Street Station < #).

AVAILABILITY: At any time.

OPERATING RESTRICTIONS: No more than 2 buses on Route 388 should be scheduled to stand at any one time.

MEAL RELIEFS: No meal relief vehicles to stand at any time.

FERRY VEHICLES: No ferry vehicles to park on stand at any time.

BLIND DISPLAY: Liverpool Street Station.

OTHER INFORMATION: LBSL toilet facilities available 24 hours at Aldgate Bus Station.

Transport for London - Live Mileage List

Route: 388

Service Change: 51547

Date: 09/02/2019

Reason for Issue

QSI points are highlighted.

OUT DIRECTION					Timing Point Code
Timing Point Code	Stop Number	Stop Name	Metres	Miles	
STFCBS	BP5603	Stratford City Bus Station			LVSTBG
	BP5777	The Copper Box	1563	0.97	SHORGE
	BP5852	Here East	489	0.30	
	17982	Trowbridge Estate	401	0.25	
HACWEW	10458	St Mary Of Eton Church	339	0.21	
	BP3684	Brookfield Road	474	0.29	BETHSN
	BP3685	Gascoyne Road	375	0.23	
	BP3686	Wetherell Road	283	0.18	
VCTPLR	BP3687	Lauriston Road	361	0.22	
	BP3688	Skipworth Road	166	0.10	CMBHVN CMBHVP
	BP3689	Fremont Street	401	0.25	
CMBHVP	1704	Mare Street / Victoria Park Road	296	0.18	
CMBHVN	7570	Cambridge Heath Station	198	0.12	
	2280	Old Ford Road	381	0.24	WLSCSR
BETHSN	4613	Bethnal Green Station	205	0.13	HACWEW
	1688	Wilmot Street	310	0.19	
	18061	Barnet Grove	567	0.35	
	1452	Brick Lane	318	0.20	
	18059	Shoreditch High Street Station	401	0.25	STFCBS
SHORGE	20803	Commercial Street / Worship Street	290	0.18	
	2113	Primrose Street	249	0.15	
LVSTBG	2116	Liverpool Street Station	229	0.14	
Total Route Mileage - Out Direction			8296	5.15	
			Metres	Miles	

Central London Bus Consultation

Withdrawn south of Liverpool Street

BACK DIRECTION

Stop Number	Stop Name	Metres	Miles
768	Liverpool Street Station		
2114	Primrose Street	304	0.19
18058	Bethnal Grn Rd / Shoreditch High St Stn	487	0.30
1451	Brick Lane	315	0.20
4614	Barnet Grove	395	0.25
18060	Pollard Row	272	0.17
1687	Wilmot Street	249	0.15
4615	Bethnal Green Station	238	0.15
4611	Old Ford Road	334	0.21
1705	Cambridge Heath Station	267	0.17
2277	Mare Street / Victoria Park Road	337	0.21
785	King Edward's Road	384	0.24
25445	Shore Road	336	0.21
14466	Holcroft Road	349	0.22
18069	Cassland Crescent	272	0.17
18071	Gascoyne Road	308	0.19
18073	Christie Road	189	0.12
14134	Wick Road	202	0.13
10459	St Mary Of Eton Church	568	0.35
35255	Trowbridge Estate	209	0.13
BP5851	Here East	463	0.29
BP5776	The Copper Box	601	0.37
BP5772	Westfield Avenue	908	0.56
BP5605	Stratford City Bus Station	502	0.31

Total Route Mileage - Back Direction

7079

4.40

Metres

Miles

7. Service Specification

Route: 388

Contract Reference: QC55606

This Service Specification forms section 7 of the ITT and should be read in conjunction with the ITT document, Version 1 dated 29 September 2011.

You are formally invited to tender for the provision of the bus service detailed below and in accordance with this Service Specification. Tenderers must ensure that a Compliant Tender is submitted and this will only be considered for evaluation if all parts of the Tender documents, as set out in section 11, have been received by the Corporation by the Date of Tender. The Tender must be fully completed in the required format, in accordance with the Instructions to Tenderers. A Compliant Tender must comply fully with the requirements of the Framework Agreement; adhere to the requirements of the Service Specification; and reflect the price of operating the Services with new vehicles.

Route Number	388
Terminus Points	Option 1: Stratford City Bus Station and Blackfriars Station. Option 2: Stratford City Bus Station and Elephant & Castle, Newington Causeway
Contract Basis	Incentivised
Commencement Date	21 st January 2017
Vehicle Type	Option 1: 87 capacity, dual door, double deck Option 2: 87 capacity, dual door, double deck
Current Maximum Approved Dimensions	Option 1: 10.7 metres long and 2.55 metres wide. Option 2: 10.4 meters long and 2.55 meters wide.
New Vehicles Mandatory	Yes
Hybrid Price Required	Yes
Sponsored Route	No
Advertising Rights	Operator
Minimum Performance Standard - Option 1	Average Excess Wait Time - No more than 1.00 minutes
Minimum Performance Standard - Option 2	Average Excess Wait Time - No more than 1.10 minutes
Extension Threshold - Option 1	Average Excess Wait Time Threshold - 0.90 minutes
Extension Threshold - Option 2	Average Excess Wait Time Threshold - 1.00 minutes
Minimum Operated Mileage Standard - Option 1	No less than 98.00%
Minimum Operated Mileage Standard - Option 2	No less than 98.00%

The Date of Tender for this ITT is: No later than 12 Noon on Monday 9th May 2016

Tenderers should refer to section 3 of Part A for the Service Specification Explanatory Notes and Appendix B of section 5 for the Example Service Specification of the ITT document.

SERVICE SPECIFICATION

- 1) SERVICE SPEC - ROUTE SPECIFICATION INFORMATION
- 2) NOTES
- 3) SCHEDULE REQUIREMENTS & PINCHPOINTS
- 4) OPERATIONAL CONSIDERATIONS
- 5) ROUTE RECORD, CURRENT PERFORMANCE, QSI BY TIME OF DAY, IBUS MILEAGE & QSI POINTS

2) NOTES

Proposed Changes:

At this time, the Corporation expects to implement a change to the existing service prior to the commencement of the new Route Agreement for Route No. 388.

- On 30th April 2016 the emergency schedules introduced on 13th February 2016 to mitigate the Road Modernisation Plan works are removed. New schedules are introduced.

Tenderers should note that the following alterations (subject to consultation) are proposed as part of this Service Specification for introduction with the new Route Agreement:

Two Options are specified:

Option 1:

- No changes are proposed.

Option 2:

- Route No. 388 is restructured to operate between Stratford City Bus Station and Elephant & Castle, Newington Causeway.
- Ex Stratford City Bus Station, Route No. 388 is extended from Bishopsgate to operate from Wormwood Street via the existing line of routeing of Route No. 100 to Elephant & Castle, Newington Causeway.
- Ex Elephant & Castle, Newington Causeway, Route No. 388 is extended to operate from Newington Causeway via the existing line of routeing of Route No. 100 to Wormwood Street and then it would operate to Bishopsgate where it would re-join normal line of routeing.
- The section of routeing between Bishopsgate (at junction with Wormwood Street) and Queen Victoria Street (at junction with Friday Street) is withdrawn in both directions.
- Ex Elephant & Castle, Newington Causeway, first and last departures for Route No. 100 have been used.
- The section between Wormwood Street and Elephant & Castle, Newington Causeway on Route No. 100 is withdrawn and is replaced by Route No. 388.
- **Please see Section 5 for a full list of streets traversed and standing arrangements.**
- 87 capacity, dual door, double deck buses are specified.

2) Notes - continued

Tenderers are also encouraged to offer two axle vehicles with a longer wheelbase and increased capacity, subject to route constraints. Tenders offering such vehicles will be welcomed and carefully considered by the Corporation. Triaxle vehicles are not being considered by the Corporation at this time.

Operators should provide the following prices:

- 1. Annual diesel price - based on minimum 5 year contract.**
- 2. Annual hybrid price - based on minimum 5 year contract.**
- 3. Annual hybrid price - with upfront payment of capital difference between diesel and hybrid for 5 year contract.**

3) SCHEDULE REQUIREMENTS & PINCHPOINTS - continued

3.2) SATURDAY AND GOOD FRIDAY SCHEDULE REQUIREMENTS & PINCHPOINTS

OPTION 1

Stratford City Bus Station to Blackfriars Station			Blackfriars Station to Stratford City Bus Station		
First departure no later than 0530.			First departure no later than 0600.		
0525 - 0630	Every 15 minutes		0555 - 0700	Every 15 minutes	
0631 - 0855	Every 12 minutes		0701 - 0925	Every 12 minutes	
0856 - 1815	Every 10 minutes		0926 - 1915	Every 10 minutes	
1816 - 2355	Every 12 minutes		1916 - 0025	Every 12 minutes	
Last departure no earlier than 2350.			Last departure no earlier than 0020.		
Pinchpoints					
Liverpool Street, Bishopsgate	0920 - 1100	10 minutes	Cambridge Heath Station	0910 - 0945	12 minutes
				0946 - 1105	10 minutes

OPTION 2

Stratford City Bus Station to Elephant & Castle, Newington Causeway			Elephant & Castle, Newington Causeway to Stratford City Bus Station		
First departure no later than 0530.			First departure no later than 0600.		
0525 - 0630	Every 15 minutes		0555 - 0700	Every 15 minutes	
0631 - 0855	Every 12 minutes		0701 - 0900	Every 12 minutes	
0856 - 1815	Every 10 minutes		0901 - 1910	Every 10 minutes	
1816 - 2355	Every 12 minutes		1911 - 0040	Every 12 minutes	
Last departure no earlier than 2350.			Last departure no earlier than 0035.		
Pinchpoints					
Liverpool Street, Bishopsgate	0920 - 1100	10 minutes	Cambridge Heath Station	0910 - 0945	12 minutes
				0946 - 1105	10 minutes

3) SCHEDULE REQUIREMENTS & PINCHPOINTS - continued

3.3) SUNDAY AND PUBLIC HOLIDAYS (EXCEPT GOOD FRIDAY AND CHRISTMAS DAY) SCHEDULE REQUIREMENTS & PINCHPOINTS

OPTION 1

Stratford City Bus Station to Blackfriars Station			Blackfriars Station to Stratford City Bus Station		
First departure no later than 0530.			First departure no later than 0600.		
0525 - 0630	Every 20 minutes		0555 - 0700	Every 20 minutes	
0631 - 1000	Every 15 minutes		0701 - 1015	Every 15 minutes	
1001 - 2355	Every 12 minutes		1016 - 0025	Every 12 minutes	
Last departure no earlier than 2350.			Last departure no earlier than 0020.		
Pinchpoints					
Liverpool Street, Bishopsgate	1030 - 1130	12 minutes	Cambridge Heath Station	1040 - 1140	12 minutes

Tenderers must identify the cost of the Boxing Day element of this service separately.

OPTION 2

Stratford City Bus Station to Elephant & Castle, Newington Causeway			Elephant & Castle, Newington Causeway to Stratford City Bus Station		
First departure no later than 0530.			First departure no later than 0600.		
0525 - 0630	Every 20 minutes		0555 - 0700	Every 20 minutes	
0631 - 1000	Every 15 minutes		0701 - 1015	Every 15 minutes	
1001 - 2355	Every 12 minutes		1016 - 0040	Every 12 minutes	
Last departure no earlier than 2350.			Last departure no earlier than 0035.		
Pinchpoints					
Liverpool Street, Bishopsgate	1030 - 1130	12 minutes	Cambridge Heath Station	1040 - 1140	12 minutes

Tenderers must identify the cost of the Boxing Day element of this service separately.

4) OPERATIONAL CONSIDERATIONS

- 4.1) Route No. 388 can suffer from unpredictable traffic delays in the City of London area on Monday to Fridays particularly during peak periods.
- 4.2) Crossrail will connect the City, Canary Wharf, the West End and Heathrow Airport to commuter areas east and west of the capital. Major construction of the railway began in 2010, with the first services expected to commence through the central London tunnelled section in late 2018. The full Crossrail service will be operating from Heathrow and Reading to Abbey Wood and Shenfield in late 2019. The construction impacts of Crossrail could affect Route No. 388 and it is anticipated that some passenger demand for Route No. 388 may shift to this line when it opens. Route No. 388 will be reviewed closer after the opening date.
- 4.3) The City of London have aspirations to reduce traffic levels and congestion at Bank junction to facilitate improving the urban realm and pedestrian environment. They would like more bus services to run via London Wall rather than Bank.
- 4.4) Route No. 388 serves the former Olympic site where substantial development is proposed. The impact of this development on Route No. 388 will be monitored.

5) ROUTE RECORD, CURRENT PERFORMANCE, QSI BY TIME OF DAY, IBUS MILEAGE & QSI POINTS

- 5.1) ROUTE RECORD
As per Busnet printout.
- 5.2) CURRENT PERFORMANCE
As per current print out.
- 5.3) QSI BY TIME OF DAY
As per current print out.
- 5.4) IBUS MILEAGE & QSI POINTS
As per current print out.

LONDON BUSES - ROUTE DESCRIPTION

ROUTE 388: Stratford City Bus Station - Blackfriars Station

Date of Structural Change: 21 January 2017.

Date of Service Change: 21 January 2017.

Reason for Issue: New Tender.

STREETS TRAVERSED

Towards Blackfriars Station: Stratford City Bus Station, Montfichet Road, Westfield Avenue, Waterden Road, Eastway, Wick Road, Victoria Park Road, Mare Street, Cambridge Heath Road, Bethnal Green Road, Shoreditch High Street, Norton Folgate, Bishopsgate, Threadneedle Street, Mansion House Street, Queen Victoria Street.

Towards Stratford City Bus Station: Queen Victoria Street, Mansion House Street, Threadneedle Street, Bishopsgate, Norton Folgate, Shoreditch High Street, Bethnal Green Road, Cambridge Heath Road, Mare Street, Well Street, Cassland Road, Wick Road, Eastway, Waterden Road, Westfield Avenue, Montfichet Road.

AUTHORISED STANDS, CURTAILMENT POINTS, & BLIND DESCRIPTIONS

Please note that only stands, curtailment points, & blind descriptions as detailed in this contractual document may be used.

STRATFORD CITY BUS STATION

Private stand for 13 buses in marked bays in bus station.

Buses proceed from Montfichet Road via Stratford City Bus Station to stand, departing to Stratford City Bus Station. Set down in Montfichet Road, at stop S (BP5605 - Stratford City Bus Station, Last Stop on LOR: BP5605 - Stratford City Bus Station) and pick up in Stratford City Bus Station, at stop W (BP5603 - Stratford City Bus Station, First Stop on LOR: BP5603 - Stratford City Bus Station).

AVAILABILITY: At any time.

OPERATING RESTRICTIONS: No more than 2 buses on Route 388 should be scheduled to stand at any one time.

MEAL RELIEFS: No meal relief vehicles to stand at any time.

FERRY VEHICLES: No ferry vehicles to park on stand at any time.

BLIND DISPLAY: Stratford City.

HACKNEY WICK, CHAPMAN ROAD (from BLACKFRIARS STATION)

Buses proceed from Cassland Road via Wick Road, Chapman Road, Trowbridge Road, Chapman Road and Wick Road departing to Victoria Park Road. Set down in Cassland Road, at Stop H (14134 - Wick Road, Last Stop on LOR: 14134 - Wick Road) and pick up in Victoria Park Road, at Stop SJ (BP3684 - Brookfield Road, First Stop on LOR: BP3684 - Brookfield Road).

AVAILABILITY: At any time.
OPERATING RESTRICTIONS: **Turning Point Only - Buses must not stand**
BLIND DISPLAY: Hackney Wick.

LAURISTON ROAD, CHURCH CRESCENT (from BLACKFRIARS STATION)

Public off side stand for one bus on west side of Church Crescent commencing 11 metres north of lamp standard Z2 extending 13 metres north.

Buses proceed from Well Street via Cassland Road, Terrace Road and Church Crescent to stand, departing via Church Crescent and Lauriston Road to Victoria Park Road. Set down in Well Street, at Stop D (14466 - Holcroft Road, Last Stop on LOR: 14466 - Holcroft Road) and pick up in Victoria Park Road, at Stop SM (BP3687 - Lauriston Road, First Stop on LOR: BP3687 - Lauriston Road).

AVAILABILITY: At any time.
OPERATING RESTRICTIONS: Unscheduled curtailments only.
MEAL RELIEFS: No meal relief vehicles to stand at any time.
FERRY VEHICLES: No ferry vehicles to park on stand at any time.
BLIND DISPLAY: South Hackney, Church Crescent.

CAMBRIDGE HEATH, ASH GROVE GARAGE (from BLACKFRIARS STATION)

Private stand on forecourt of Ash Grove Bus Garage.

Buses proceed from Mare Street via Ash Grove and Ash Grove Garage to stand, departing via Ash Grove Garage, Ash Grove and Mare Street to Cambridge Heath Road. Set down in Mare Street, at Stop R (2277 - Mare Street / Victoria Park Road, Last Stop on LOR: 2277 - Mare Street / Victoria Park Road) and pick up in Cambridge Heath Road, at Stop P (7570 - Cambridge Heath Station #, First Stop on LOR: 7570 - Cambridge Heath Station #).

AVAILABILITY: At any time.
OPERATING RESTRICTIONS: Unscheduled curtailments only.
MEAL RELIEFS: No meal relief vehicles to stand at any time.
FERRY VEHICLES: No ferry vehicles to park on stand at any time.
BLIND DISPLAY: Ash Grove.

LIVERPOOL STREET STATION, BISHOPSGATE (from Stratford City Bus Station)

Buses proceed from Bishopsgate via Wormwood Street, London Wall, Moorgate, South Place, Eldon Street, Blomfield Street, London Wall and Wormwood Street departing to Bishopsgate. Set down in Bishopsgate, at Stop L (2116 - Liverpool Street Station < #, Last Stop on LOR: 2116 - Liverpool Street Station < #) and pick up in Bishopsgate, at Stop F (768 - Liverpool Street Station < #, First Stop on LOR: 768 - Liverpool Street Station < #).

AVAILABILITY: At any time.
OPERATING RESTRICTIONS: **Turning Point Only - Buses must not stand**
BLIND DISPLAY: Liverpool Street.

BLACKFRIARS STATION, QUEEN VICTORIA STREET

Public stand for 2 buses on the north side of Queen Victoria Street, commencing 5m east of the junction with Blackfriars Lane.

Buses proceed from Queen Victoria Street via Blackfriars Bridge (Northern End), Slip Road Through Traffic Island, Blackfriars Bridge (Northern End) and Queen Victoria Street to stand, departing to Queen Victoria Street. Set down in Queen Victoria Street, at Stop B (BP2847 - Blackfriars Station < #, Last Stop on LOR: BP2847 - Blackfriars Station < #) and pick up in Queen Victoria Street, at Stop BA (BP2846 - Blackfriars Station < #, First Stop on LOR: BP2846 - Blackfriars Station < #).

AVAILABILITY: At any time.
OPERATING RESTRICTIONS: No more than 2 buses on Route 388 should be scheduled to stand at any one time.
MEAL RELIEFS: No meal relief vehicles to stand at any time.
FERRY VEHICLES: No ferry vehicles to park on stand at any time.
BLIND DISPLAY: Blackfriars.
OTHER INFORMATION: No toilet facilities available.

LONDON BUSES - ROUTE DESCRIPTION

ROUTE 388: Stratford City Bus Station - Elephant & Castle

Date of Structural Change: 22 January 2017.

Date of Service Change: 22 January 2017.

Reason for Issue: New tender.

STREETS TRAVERSED

Towards Elephant & Castle: Stratford City Bus Station, Montfichet Road, Westfield Avenue, Waterden Road, Eastway, Wick Road, Victoria Park Road, Mare Street, Cambridge Heath Road, Bethnal Green Road, Shoreditch High Street, Norton Folgate, Bishopsgate, Wormwood Street, London Wall, Museum Of London Roundabout, St Martin's Le Grand, Cheapside, New Change, Cannon Street, Friday Street, Queen Victoria Street, Blackfriars Bridge, Blackfriars Road, St George's Circus, London Road, Elephant And Castle, Newington Causeway.

Towards Stratford City Bus Station: Newington Causeway, Elephant And Castle, London Road, St George's Circus, Blackfriars Road, Blackfriars Bridge, New Bridge Street, Queen Victoria Street, Friday Street, Cannon Street, New Change, Cheapside, Newgate Street, King Edward Street, Little Britain, Montague Street, Museum Of London Roundabout, London Wall, Wormwood Street, Bishopsgate, Norton Folgate, Shoreditch High Street, Bethnal Green Road, Cambridge Heath Road, Mare Street, Well Street, Cassland Road, Wick Road, Eastway, Waterden Road, Westfield Avenue, Montfichet Road.

AUTHORISED STANDS, CURTAILMENT POINTS, & BLIND DESCRIPTIONS

Please note that only stands, curtailment points, & blind descriptions as detailed in this contractual document may be used.

STRATFORD CITY BUS STATION

Private stand for 13 buses in marked bays in bus station.

Buses proceed from Montfichet Road via Stratford City Bus Station to stand, departing to Stratford City Bus Station. Set down in Montfichet Road, at stop S (BP5605 - Stratford City Bus Station, Last Stop on LOR: BP5605 - Stratford City Bus Station) and pick up in Stratford City Bus Station, at stop W (BP5603 - Stratford City Bus Station, First Stop on LOR: BP5603 - Stratford City Bus Station).

AVAILABILITY:	At any time.
OPERATING RESTRICTIONS:	No more than 2 buses on Route 388 should be scheduled to stand at any one time.
MEAL RELIEFS:	No meal relief vehicles to stand at any time.
FERRY VEHICLES:	No ferry vehicles to park on stand at any time.
BLIND DISPLAY:	Stratford City.

HACKNEY WICK, CHAPMAN ROAD (from ELEPHANT & CASTLE)

Buses proceed from Cassland Road via Wick Road, Chapman Road, Trowbridge Road, Chapman Road and Wick Road departing to Victoria Park Road. Set down in Cassland Road, at Stop H (14134 - Wick Road, Last Stop on LOR: 14134 - Wick Road) and pick up in Victoria Park Road, at Stop SJ (BP3684 - Brookfield Road, First Stop on LOR: BP3684 - Brookfield Road).

AVAILABILITY:	At any time.
OPERATING RESTRICTIONS:	Turning Point Only - Buses must not stand
BLIND DISPLAY:	Hackney Wick.

LAURISTON ROAD, CHURCH CRESCENT (from ELEPHANT & CASTLE)

Public off side stand for one bus on west side of Church Crescent commencing 11 metres north of lamp standard Z2 extending 13 metres north.

Buses proceed from Well Street via Cassland Road, Terrace Road and Church Crescent to stand, departing via Church Crescent and Lauriston Road to Victoria Park Road. Set down in Well Street, at Stop D (14466 - Holcroft Road, Last Stop on LOR: 14466 - Holcroft Road) and pick up in Victoria Park Road, at Stop SM (BP3687 - Lauriston Road, First Stop on LOR: BP3687 - Lauriston Road).

AVAILABILITY:	At any time.
OPERATING RESTRICTIONS:	Unscheduled curtailments only.
MEAL RELIEFS:	No meal relief vehicles to stand at any time.
FERRY VEHICLES:	No ferry vehicles to park on stand at any time.
BLIND DISPLAY:	South Hackney, Church Crescent.

CAMBRIDGE HEATH, ASH GROVE GARAGE (from ELEPHANT & CASTLE)

Private stand on forecourt of Ash Grove Bus Garage.

Buses proceed from Mare Street via Ash Grove and Ash Grove Garage to stand, departing via Ash Grove Garage, Ash Grove and Mare Street to Cambridge Heath Road. Set down in Mare Street, at Stop R (2277 - Mare Street / Victoria Park Road, Last Stop on LOR: 2277 - Mare Street / Victoria Park Road) and pick up in Cambridge Heath Road, at Stop P (7570 - Cambridge Heath Station #, First Stop on LOR: 7570 - Cambridge Heath Station #).

AVAILABILITY:	At any time.
OPERATING RESTRICTIONS:	Unscheduled curtailments only.
MEAL RELIEFS:	No meal relief vehicles to stand at any time.
FERRY VEHICLES:	No ferry vehicles to park on stand at any time.
BLIND DISPLAY:	Ash Grove.

LIVERPOOL STREET STATION, BISHOPSGATE (from Stratford City Bus Station)

Buses proceed from Bishopsgate via Wormwood Street, London Wall, Moorgate, South Place, Eldon Street, Blomfield Street, London Wall and Wormwood Street departing to Bishopsgate. Set down in Bishopsgate, at Stop L (2116 - Liverpool Street Station < #, Last Stop on LOR: 2116 - Liverpool Street Station < #) and pick up in Bishopsgate, at Stop F (768 - Liverpool Street Station < #, First Stop on LOR: 768 - Liverpool Street Station < #).

AVAILABILITY:	At any time.
OPERATING RESTRICTIONS:	Turning Point Only - Buses must not stand
BLIND DISPLAY:	Liverpool Street.

BLACKFRIARS STATION (from Stratford City Bus Station)

Buses proceed from Queen Victoria Street via Blackfriars Bridge, Turn Through Central Island, Blackfriars Bridge and New Bridge Street departing to Queen Victoria Street. Set down in Queen Victoria Street, at stop B (BP2847 - Blackfriars Station < #, Last Stop on LOR: BP2847 - Blackfriars Station < #) and pick up in Queen Victoria Street, at stop A (BP2846 - Blackfriars Station < #, First Stop on LOR: BP2846 - Blackfriars Station < #).

AVAILABILITY:	At any time.
OPERATING RESTRICTIONS:	Turning Point Only - Buses must not stand
BLIND DISPLAY:	Blackfriars.

ELEPHANT & CASTLE, SOUTHWARK BRIDGE ROAD

Public stand in two portions:

1 - For five buses on the west side of Southwark Bridge Road, commencing 10 metres north of the centre of Keyworth Street and extending 54 metres north.

2 - Overflow stand for two buses on the south side (offside) of Gaunt Street extending 20 metres. Stand flag BP3514.

Buses proceed from Newington Causeway via Southwark Bridge Road to stand, departing via Southwark Bridge Road and Gaunt Street to Newington Causeway. Set down in Newington Causeway, at stop F (33624 - Elephant & Castle / Newington Causeway, Last Stop on LOR: BP2847 - Blackfriars Station <#) and pick up in Newington Causeway, at stop G (33626 - Elephant & Castle / Newington Causeway, First Stop on LOR: BP2846 - Blackfriars Station <#).

AVAILABILITY:

At any time.

OPERATING RESTRICTIONS:

No more than 2 buses on Route 388 should be scheduled to stand at any one time.

MEAL RELIEFS:

No meal relief vehicles to stand at any time.

FERRY VEHICLES:

No ferry vehicles to park on stand at any time.

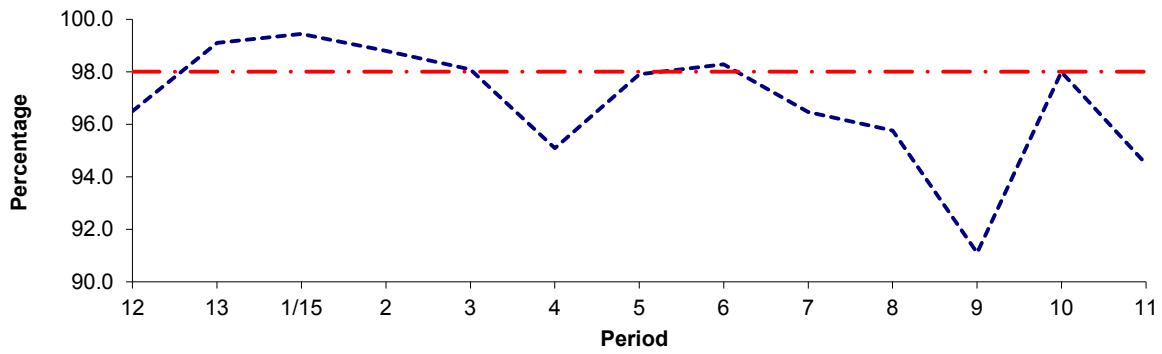
BLIND DISPLAY:

Elephant & Castle.

PART B - PERFORMANCE STATISTICS

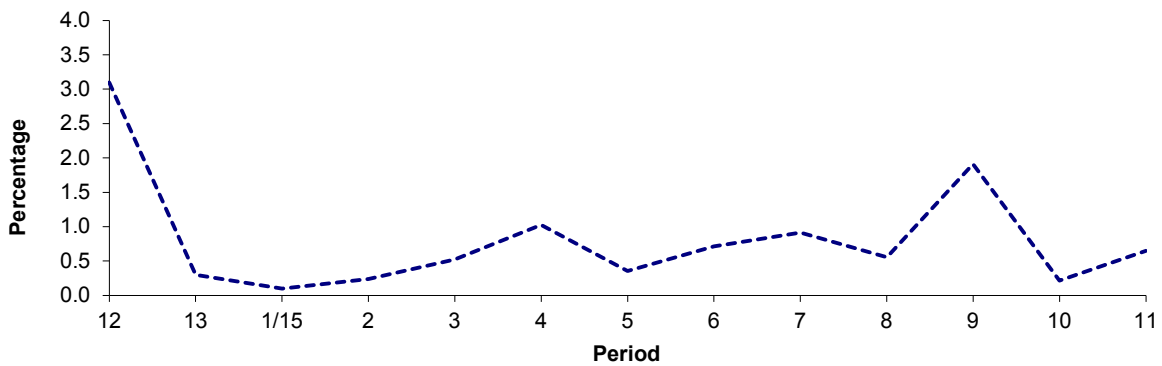
Route 388

Mileage Operated



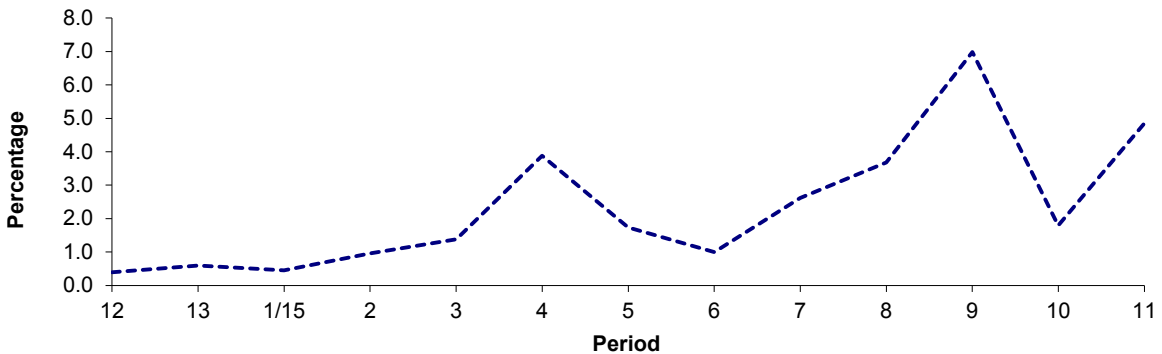
Period	12	13	1/15	2	3	4	5	6	7	8	9	10	11
2014/2015	96.51	99.11	99.45	98.80	98.09	95.09	97.91	98.29	96.47	95.77	91.11	97.99	94.50
Min Standard	98.00	98.00	98.00	98.00	98.00	98.00	98.00	98.00	98.00	98.00	98.00	98.00	98.00

Deductible Mileage



Period	12	13	1/15	2	3	4	5	6	7	8	9	10	11
2014/2015	3.10	0.30	0.10	0.24	0.52	1.03	0.35	0.71	0.91	0.55	1.91	0.22	0.65

Non Deductible Mileage

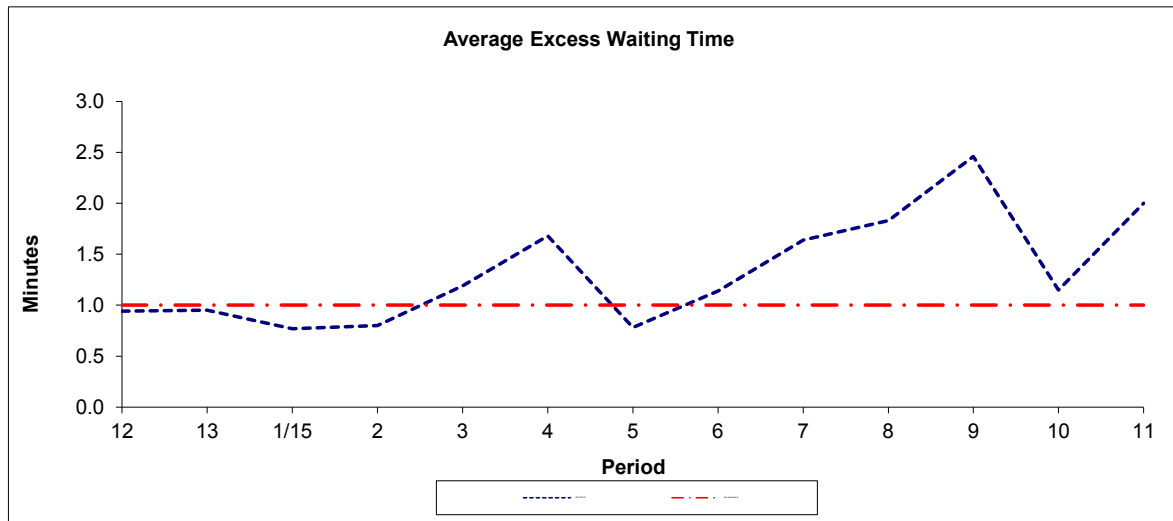


Period	12	13	1/15	2	3	4	5	6	7	8	9	10	11
2014/2015	0.40	0.59	0.46	0.96	1.38	3.88	1.74	1.00	2.62	3.68	6.98	1.79	4.85

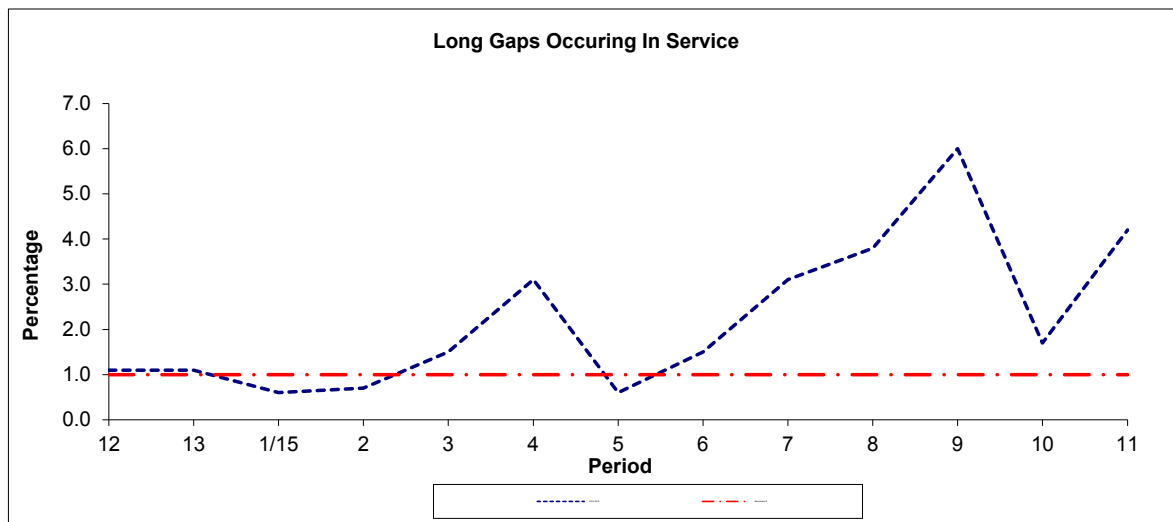
Note : Mileage is based on 4 weeks data
Deductible Mileage was adversely affected by industrial action in periods 11 and 12 14/15.

PART B - PERFORMANCE STATISTICS

Route 388



Period	12	13	1/15	2	3	4	5	6	7	8	9	10	11
2014-2015	0.94	0.95	0.77	0.80	1.19	1.68	0.78	1.14	1.64	1.83	2.46	1.15	2.00
Min Standard #	1.00	1.00	1.00	1.00	1.00	1.00	1.00	1.00	1.00	1.00	1.00	1.00	1.00



Period	12	13	1/15	2	3	4	5	6	7	8	9	10	11
2014-2015	1.10	1.10	0.60	0.70	1.50	3.10	0.60	1.50	3.10	3.80	6.00	1.70	4.20
Benchmark #	1.00	1.00	1.00	1.00	1.00	1.00	1.00	1.00	1.00	1.00	1.00	1.00	1.00

Note : Reliability is actual performance under full iBus (4 weeks data).
 # Minimum Standards and Benchmarks are those applicable under Option 1 of the new contract. A minimum standard of 1.10 minutes EWT and Long Gaps benchmark of 1.3% applies under Option 2.

ROUTE 388 - FULL iBUS RESULTS BY TIME OF DAY
QUARTER 4 14/15 TO QUARTER 3 15/16 (03/01/15 - 08/01/16)

MONDAY - FRIDAY

Time Range	Expected Buses	Observed Buses	Observed Buses (%)	SWT (mins)	EWT (mins)	AWT (mins)	Probability of Waiting < 10 mins (%)	Probability of Waiting 10-20 mins (%)	Probability of Waiting 20-30 mins (%)	Probability of Waiting > 30 mins (%)	Long Gaps (%)	Maximum Gap (mins)
05:00 - 07:00	18,998.	19,151.	100.8	6.01	0.24	6.25	84.1	15.5	0.4	0.0	0.2	31
07:00 - 10:00	58,730.	56,976.	97.0	5.00	0.93	5.93	83.3	15.6	1.0	0.1	1.1	51
10:00 - 13:00	58,115.	56,868.	97.9	4.95	1.18	6.13	82.0	16.4	1.3	0.3	1.7	83
13:00 - 16:00	58,705.	56,821.	96.8	4.89	1.40	6.29	79.6	17.9	2.0	0.5	2.7	66
16:00 - 19:00	57,186.	55,092.	96.3	4.99	2.07	7.06	75.4	20.5	3.4	0.8	4.2	75
19:00 - 22:00	52,102.	51,558.	99.0	5.40	1.13	6.54	78.4	19.6	1.6	0.4	1.5	78
22:00 - 24:00	31,847.	30,842.	96.8	5.90	1.10	6.99	75.4	22.4	1.8	0.3	1.0	67
Locations	335,683.	327,308.	97.5	5.08	1.34	6.42	79.7	18.0	1.9	0.4	2.3	83

SATURDAY

Time Range	Expected Buses	Observed Buses	Observed Buses (%)	SWT (mins)	EWT (mins)	AWT (mins)	Probability of Waiting < 10 mins (%)	Probability of Waiting 10-20 mins (%)	Probability of Waiting 20-30 mins (%)	Probability of Waiting > 30 mins (%)	Long Gaps (%)	Maximum Gap (mins)
05:00 - 07:00	3,238.	3,211.	99.2	7.33	0.26	7.59	74.2	25.0	0.8	0.0	0.4	32
07:00 - 10:00	10,182.	10,114.	99.3	5.77	0.51	6.28	81.7	17.9	0.4	0.0	0.1	34
10:00 - 13:00	12,148.	11,955.	98.4	4.93	0.92	5.85	84.1	14.8	0.8	0.3	1.1	52
13:00 - 16:00	11,850.	11,470.	96.8	5.00	1.40	6.40	79.5	18.3	1.9	0.3	2.2	63
16:00 - 19:00	11,728.	11,299.	96.3	5.04	1.75	6.80	76.6	20.0	2.6	0.9	3.3	61
19:00 - 22:00	10,291.	9,969.	96.9	5.76	1.94	7.70	71.3	23.8	3.7	1.2	3.2	65
22:00 - 24:00	6,606.	6,213.	94.1	5.90	1.49	7.39	71.5	24.4	3.4	0.6	2.1	49
Locations	66,043.	64,231.	97.3	5.29	1.32	6.61	78.4	19.1	1.9	0.5	2.1	65

SUNDAY AND BANK HOLIDAYS

Time Range	Expected Buses	Observed Buses	Observed Buses (%)	SWT (mins)	EWT (mins)	AWT (mins)	Probability of Waiting < 10 mins (%)	Probability of Waiting 10-20 mins (%)	Probability of Waiting 20-30 mins (%)	Probability of Waiting > 30 mins (%)	Long Gaps (%)	Maximum Gap (mins)
05:00 - 07:00	2,892.	2,893.	100.0	9.74	0.33	10.08	62.4	32.4	4.8	0.3	1.9	49
07:00 - 10:00	8,661.	8,569.	98.9	7.66	0.41	8.08	64.8	33.9	1.1	0.1	0.1	49
10:00 - 13:00	10,938.	10,857.	99.3	6.17	0.53	6.70	77.6	21.5	0.8	0.1	0.3	48
13:00 - 16:00	11,309.	11,132.	98.4	5.98	0.99	6.97	75.5	22.5	1.7	0.3	0.9	62
16:00 - 19:00	11,339.	11,261.	99.3	6.02	0.89	6.91	75.1	23.5	1.3	0.1	0.4	39
19:00 - 22:00	11,528.	11,689.	101.4	5.99	0.70	6.68	77.7	21.4	0.9	0.1	0.3	41
22:00 - 24:00	7,609.	7,423.	97.6	5.88	0.56	6.43	79.6	19.9	0.5	0.1	0.2	38
Locations	64,276.	63,824.	99.3	6.28	0.73	7.01	75.0	23.6	1.3	0.1	0.5	62

ALL DAYS

Time Range	Expected Buses	Observed Buses	Observed Buses (%)	SWT (mins)	EWT (mins)	AWT (mins)	Probability of Waiting < 10 mins (%)	Probability of Waiting 10-20 mins (%)	Probability of Waiting 20-30 mins (%)	Probability of Waiting > 30 mins (%)	Long Gaps (%)	Maximum Gap (mins)
05:00 - 07:00	25,128.	25,255.	100.5	6.41	0.25	6.65	81.6	17.6	0.7	0.0	0.3	49
07:00 - 10:00	77,573.	75,659.	97.5	5.20	0.87	6.07	82.2	16.7	1.0	0.1	1.0	51
10:00 - 13:00	81,201.	79,680.	98.1	5.09	1.06	6.15	81.8	16.8	1.2	0.3	1.4	83
13:00 - 16:00	81,864.	79,423.	97.0	5.04	1.35	6.39	79.1	18.5	2.0	0.4	2.4	66
16:00 - 19:00	80,253.	77,652.	96.8	5.10	1.92	7.02	75.5	20.7	3.1	0.7	3.7	75
19:00 - 22:00	73,921.	73,216.	99.0	5.52	1.19	6.72	77.3	20.4	1.8	0.4	1.6	78
22:00 - 24:00	46,062.	44,478.	96.6	5.89	1.09	6.98	75.4	22.4	1.9	0.3	1.1	67
Locations	466,002.	455,363.	97.7	5.23	1.27	6.51	79.0	18.7	1.8	0.4	2.1	83

Transport for London - QSI Points and Live Mileage List

v2.0 - Mileage directly imported from Caesar

TRANCHE 556

Route 388 (Option 1 : Stratford City - Blackfriars)
Service change 36073
Date 01/03/2014
QSI Points are highlighted.

Reason for Issue

Service re-routed through iCity

OUT DIRECTION				
Timing Point Code	Stop Number	Stop Name	Metres	Miles
STFCBS	BP5603	Stratford City Bus Station		
	BP5773	Westfield Avenue	777	0.48
	BP5777	The Copper Box	787	0.49
	BP5852	Icity	515	0.32
	17982	Trowbridge Estate	374	0.23
HACWEW	10458	St Mary Of Eton Church	339	0.21
	BP3684	Victoria Park Road / Brookfield Road	474	0.29
	BP3685	Gascoyne Road	375	0.23
	BP3686	Wetherell Road	283	0.18
VCTPLR	BP3687	Lauriston Road	361	0.22
	BP3688	Skipworth Road	166	0.10
	BP3689	Fremont Street	401	0.25
	1704	Mare Street / Victoria Park Road	296	0.18
	7570	Cambridge Heath Station	198	0.12
	2280	Old Ford Road	381	0.24
BETHSN	4613	Bethnal Green Station	205	0.13
	1688	Wilmot Street	310	0.19
	18061	Barnet Grove	567	0.35
	1452	Brick Lane	318	0.20
	18059	Shoreditch High Street Station	401	0.25
SHORGE	20803	Commercial Street / Worship Street	290	0.18
	2113	Primrose Street	249	0.15
LVSTBG	2116	Liverpool Street Station	229	0.14
	BP1576	Wormwood Street	297	0.18
	8608	Old Broad Street	326	0.20
	8596	Bank Station / Queen Victoria Street	411	0.26
BANKSNQ	35423	Mansion House Station	270	0.17
	BP4339	Millennium Bridge	235	0.15
BFRSSN	BP2847	Blackfriars Station	341	0.21

Total Route Mileage - Out Direction	10176	6.32
	Metres	Miles

BACK DIRECTION				
Timing Point Code	Stop Number	Stop Name	Metres	Miles
BFRSSN	BP2846	Blackfriars Station		
	BP4338	Millennium Bridge	243	0.15
BANKSNQ	4770	Bank Station / Queen Victoria Street	543	0.34
	8606	Bank Station / Threadneedle Street	289	0.18
	8607	Old Broad Street	190	0.12
	BP1575	Wormwood Street	305	0.19
LVSTBG	768	Liverpool Street Station	212	0.13
	2114	Primrose Street	304	0.19
SHORGE	19259	Shoreditch High Street Station	230	0.14
	18058	Bethnal Grn Rd / Shoreditch High St Stn	257	0.16
	1451	Brick Lane	315	0.20
	4614	Barnet Grove	395	0.25
	18060	Pollard Row	272	0.17
	1687	Wilmot Street	249	0.15
BETHSN	4615	Bethnal Green Station	227	0.14
CMBHSN	4611	Old Ford Road	346	0.21
	1705	Cambridge Heath Station	267	0.17
	2277	Mare Street / Victoria Park Road	337	0.21
	785	King Edward's Road	384	0.24
	25445	Shore Road	336	0.21
WLSCSR	14466	Holcroft Road	349	0.22
	18069	Cassland Crescent	272	0.17
	18071	Gascoyne Road	308	0.19
	18073	Christie Road	189	0.12
	14134	Wick Road	202	0.13
HACWEW	10459	St Mary Of Eton Church	568	0.35
	35255	Trowbridge Estate	209	0.13
	BP5851	Icity	463	0.29
	BP5776	The Copper Box	496	0.31
	BP5772	Westfield Avenue	1012	0.63
	BP5605	Stratford City Bus Station	502	0.31
STFCBS				

Total Route Mileage - Back Direction	10271	6.38
	Metres	Miles

Transport for London - QSI Points and Live Mileage List

v2.0 - Mileage directly imported from Caesar

TRANCHE 556

Route 388 (Option 2 : Stratford City - Elephant)

Service change 36073

Date 01/03/2014

Reason for Issue

Service re-routed through iCity

QSI Points are highlighted.

OUT DIRECTION				
Timing Point Code	Stop Number	Stop Name	Metres	Miles
STFCBS	BP5603	Stratford City Bus Station		
	BP5773	Westfield Avenue	777	0.48
	BP5777	The Copper Box	787	0.49
	BP5852	Icity	515	0.32
	17982	Trowbridge Estate	374	0.23
HACWEW	10458	St Mary Of Eton Church	339	0.21
	BP3684	Victoria Park Road / Brookfield Road	474	0.29
	BP3685	Gascoyne Road	375	0.23
	BP3686	Wetherell Road	283	0.18
VCTPLR	BP3687	Lauriston Road	361	0.22
	BP3688	Skipworth Road	166	0.10
	BP3689	Fremont Street	401	0.25
	1704	Mare Street / Victoria Park Road	296	0.18
CMBHSN	7570	Cambridge Heath Station	198	0.12
	2280	Old Ford Road	381	0.24
BETHSN	4613	Bethnal Green Station	205	0.13
	1688	Wilmot Street	310	0.19
	18061	Barnet Grove	567	0.35
	1452	Brick Lane	318	0.20
	18059	Shoreditch High Street Station	401	0.25
SHORGE	20803	Commercial Street / Worship Street	290	0.18
	2113	Primrose Street	249	0.15
LVSTBG	2116	Liverpool Street Station	229	0.14
	BP4112	Wormwood Street		
	29911	Moorgate Station	550	0.34
	29912	London Wall / Museum Of London	335	0.21
SPLSSN	8600	St Paul's Station	346	0.21
	33385	New Change / Cannon Street	217	0.13
	BP4339	Millennium Bridge	352	0.22
BFRSSN	BP2847	Blackfriars Station	341	0.21
	BP5731	Blackfriars Station / North Entrance	248	0.15
	37666	Blackfriars Station / South Entrance	219	0.14
	26756	Stamford Street	236	0.15
SWRKS N	2586	Southwark Station	338	0.21
	2587	Pocock Street	133	0.08
	2590	St George's Circus	306	0.19
	33138	Elephant & Castle / London Road	342	0.21
ELEFNC	33624	Elephant & Castle / Newington Causeway	292	0.18

Total Route Mileage - Out Direction	12861	7.99
	Metres	Miles

BACK DIRECTION				
Timing Point Code	Stop Number	Stop Name	Metres	Miles
ELEFNC	33626	Elephant & Castle / Newington Causeway		
	33618	Elephant & Castle / Tabernacle		
	BP3718	Elephant & Castle / London Road		
	2589	St George's Circus	535	0.33
	2588	Pocock Street	207	0.13
SWRKS N	2585	Southwark Station	253	0.16
	26755	Stamford Street	257	0.16
	37637	Blackfriars Station / South Entrance	248	0.15
BFRSSN	BP2846	Blackfriars Station	462	0.29
	BP4338	Millennium Bridge	243	0.15
	33780	New Change / Cannon Street	476	0.30
SPLSSN	35432	St Paul's Station	193	0.12
	BP5594	Little Britain	323	0.20
	37600	London Wall / Museum Of London	222	0.14
	BP5687	Moorgate Station	376	0.23
	33891	All Hallows Church	361	0.22
	BP4111	Wormwood Street	155	0.10
LVSTBG	768	Liverpool Street Station		
	2114	Primrose Street	304	0.19
SHORGE	19259	Shoreditch High Street Station	230	0.14
	18058	Bethnal Grn Rd / Shoreditch High St Stn	257	0.16
	1451	Brick Lane	315	0.20
	4614	Barnet Grove	395	0.25
	18060	Pollard Row	272	0.17
	1687	Wilmot Street	249	0.15
BETHSN	4615	Bethnal Green Station	227	0.14
	4611	Old Ford Road	346	0.21
CMBHSN	1705	Cambridge Heath Station	267	0.17
	2277	Mare Street / Victoria Park Road	337	0.21
	785	King Edward's Road	384	0.24
	25445	Shore Road	336	0.21
WLSCSR	14466	Holcroft Road	349	0.22
	18069	Cassland Crescent	272	0.17
	18071	Gascoyne Road	308	0.19
	18073	Christie Road	189	0.12
	14134	Wick Road	202	0.13
HACWEW	10459	St Mary Of Eton Church	568	0.35
	35255	Trowbridge Estate	209	0.13
	BP5851	Icity	463	0.29
	BP5776	The Copper Box	496	0.31
	BP5772	Westfield Avenue	1012	0.63
STFCBS	BP5605	Stratford City Bus Station	502	0.31

Total Route Mileage - Back Direction	13932	8.65
	Metres	Miles

Mileage in bold red font is a planning estimate & not an ibus calculation