

## SECTION 2: PART A

### SERVICE SPECIFICATION FOR ROUTE Nos. 343 & N343

#### CONTENTS

	Page
1. Tenders Required	2
2. Proposed Changes	2
3. Terminals	2
4. Days of Operation	3
5. Vehicle Type	4
6. Frequencies	5
7. Minimum Performance Standards	12
8. Running Times	13
9. Layovers	13
10. Timing Constraints	13
11. Control Strategy	14
12. Operational Considerations	14
13. Stopping Arrangements	14
14. Timing Points and Mileages	15
15. Vehicle Livery	15
16. Stands & Blinds	16
 <u>Appendices</u>	
A. Route Record	17

---

**This document should be read in conjunction with the Corporation's Guide for Tenderers (Part A: Explanatory Notes - Service Requirements). Where appropriate, reference is made to the relevant section.**

## 1. TENDERS REQUIRED

This document describes the service for which the Corporation requires Tenders and Tenderers **must** submit a fully compliant bid. In addition, Tenderers **may** wish to draw upon their local knowledge to submit alternative bids which offer improved value for money in meeting passenger needs. These might incorporate, for example, different timings, frequencies, route structures and / or vehicles. The Corporation will welcome such bids and give them careful consideration.

For more information, please refer to Section 2.1 of Part A of the Guide for Tenderers.

## 2. PROPOSED CHANGES

At this time, the Corporation expects to implement a change to the existing service prior to the commencement of the new Route Agreement for Route Nos. 343 & N343:

- Two additional journeys are specified in the Mondays to Fridays AM peak ex New Cross, Jerningham Road.

Tenderers should note that the following alterations (subject to consultation) are proposed as part of this Service Specification for introduction with the new Route Agreement:

- One additional journey is withdrawn in the Mondays to Fridays AM peak ex New Cross, Jerningham Road.
- Mondays to Fridays AM and PM peak frequencies are increased from every 6-7 minutes to every 6 minutes.
- **Tenderers should identify the cost of the Nightly element of this service separately.**

## 3. TERMINALS

Route No. 343 will operate between London Bridge, City Hall and New Cross, Jerningham Road.

Route No. N343 will operate between Trafalgar Square and New Cross, Jerningham Road.

Full details of the route to be followed, the permitted terminal workings and the available stands are shown at Appendix A. Tenderers should particularly note the information relating to the shared usage of stands, the taking of meal reliefs and the use of ferry vehicles.

#### 4. DAYS OF OPERATION

One timetable must be offered for Route Nos. 343 & N343 which will operate as follows:

DAY OF OPERATION	
Mondays to Fridays	Section 6.1
Mondays to Fridays Schoolday journey	Section 6.2
Saturdays & Good Friday	Section 6.3
Sundays	Section 6.4
Christmas Day	No service
Boxing Day	Section 6.5
Other Public Holidays	Sunday service
Nightly	Section 6.6
New Year's Eve night/New Year's Day morning*	Nightly service
Christmas Eve night/Christmas Day morning	No service
Christmas Day night/Boxing Day morning	No service

\* The New Year's Eve service level should be regarded as a minimum and any frequency increases and/or diversions will be discussed with the successful Tenderer on an annual basis.

## 5. VEHICLE TYPE

Please refer to Section 2.5 of Part A of the Guide for Tenderers.

Route Nos. 343 & N343 is currently approved for vehicles which are a maximum of 10.6 metres long and 2.55 metres wide. A formal route test will be required for vehicles which exceed these dimensions. This will be arranged with the successful Tenderer.

The service requirement set out in Section 6 assumes that dual door, double deck buses with a minimum capacity of 87, of which approximately 60 should be seated, will be used on this route. Luggage space should also be provided.

Tenderers must submit proposals based on new vehicles. These must be of a low floor design and be accessible to wheelchairs by means of a powered ramp.

**Bids for both conventional diesel powered vehicles and diesel-electric hybrid vehicles should be submitted and separate prices for both types are required.**

**Bids based on a mix of hybrid and conventional vehicles would be welcomed, subject to a minimum of 10 hybrid powered vehicles being offered for this route (full hybrid operation should be offered for routes with a vehicle requirement of less than 10).**

Tenderers should refer to the vehicle design (including accessibility) features contained in Schedule II to Annex B of the Framework Agreement and Section 2 Part B of the Master ITT (Version 2 issued June 2005).

Tenderers may also submit bids based on using existing vehicles. Tenderers are asked to specify what refurbishment would be carried out on existing buses and the expected timescale of those works. See Master ITT (Version 2 issued June 2005).

## 6. FREQUENCIES

The level of service (e.g. every 15 minutes) required by the Corporation is described in terms of the interval between departures. Whilst a completely regular service at the specified frequency should be possible at most times, occasionally a bus may be timetabled to depart up to five minutes earlier or later than the regular time.

Tenderers should note that when the specified frequency changes (e.g. between the peak and midday periods), the scheduled interval between buses should never be greater than that provided by the lower of the two frequencies **AT ANY POINT ON THE ROUTE**.

Tenderers should note that unless otherwise stated **all** journeys should operate between the terminal points defined in each direction.

## 6.1 Mondays to Fridays

### 1. London Bridge, City Hall to New Cross, Jerningham Road

0515 - 0600	Every 20 minutes
0601 - 0645	Every 15 minutes
0646 - 0700	Every 10 minutes
0701 - 0720	Every 6-7 minutes (9 buses per hour)
0720 - 0900	Every 6 minutes
0901 - 1600	Every 6-7 minutes (9 buses per hour)
1601 - 1820	Every 6 minutes
1821 - 1900	Every 6-7 minutes (9 buses per hour)
1901 - 2310	Every 10 minutes
2311 - 0015	Every 12 minutes

First departure from London Bridge, City Hall no later than 0520.  
Last departure from London Bridge, City Hall no earlier than 0010.

Tenderers should ensure that buses are scheduled to be no more than 10 minutes apart at Brockley, Friendsbury Road between 0700 and 0735, 7 minutes apart between 0736 and 0800 and between 1530 and 1630.

### 2. New Cross, Jerningham Road to London Bridge, City Hall

0505 - 0610	Every 15 minutes
0611 - 0630	Every 10 minutes
0631 - 0645	Every 6-7 minutes (9 buses per hour)
0646 - 0700	Every 6 minutes
0701 - 0800	Every 5-6 minutes (11 buses per hour)
0801 - 0915	Every 6 minutes
0916 - 1550	Every 6-7 minutes (9 buses per hour)
1551 - 1750	Every 6 minutes
1751 - 1900	Every 6-7 minutes (9 buses per hour)
1901 - 2300	Every 10 minutes
2301 - 0005	Every 12 minutes

First departure from New Cross, Jerningham Road no later than 0510.  
Last departure from New Cross, Jerningham Road no earlier than 2400.

Tenderers should ensure that buses are scheduled to be no more than 7 minutes apart at Elephant & Castle, Tabernacle between 0700 and 0720, no more than 6 minutes apart between 0721 and 0800 and no more than 7 minutes apart between 1530 and 1630.

## 6.2 Mondays to Fridays Schooldays

1. Telegraph Hill, St Catherines Church to Peckham, Aylesham Centre

1458            One journey

This journey shown in section 6.2 is specifically designed to meet the finish time of Harris Academy for Girls. It is possible that this time may be altered during the life of the contract. Tenderers should indicate whether they are able to adjust the time of the specified journey by up to 20 minutes (earlier or later) without alteration to the contract price. It may also be necessary for afternoon journeys to operate earlier than stated at the end of term and on other occasions at short notice.

### 6.3 Saturdays & Good Friday

1. London Bridge, City Hall to New Cross, Jerningham Road

0515 - 0620	Every 20 minutes
0621 - 0705	Every 15 minutes
0706 - 0900	Every 12 minutes
0901 - 1830	Every 6-7 minutes (9 buses per hour)
1831 - 2310	Every 10 minutes
2311 - 0015	Every 12 minutes

First departure from London Bridge, City Hall no later than 0520.  
Last departure from London Bridge, City Hall no earlier than 0010.

Tenderers should ensure that buses are scheduled to be no more than 7 minutes apart at Brockley, Friendsbury Road between 0940 and 1040.

2. New Cross, Jerningham Road to London Bridge, City Hall

0505 - 0610	Every 20 minutes
0611 - 0640	Every 15 minutes
0641 - 0840	Every 12 minutes
0841 - 1800	Every 6-7 minutes (9 buses per hour)
1801 - 2300	Every 10 minutes
2301 - 0005	Every 12 minutes

First departure from New Cross, Jerningham Road no later than 0510.  
Last departure from New Cross, Jerningham Road no earlier than 2400.

Tenderers should ensure that buses are scheduled to be no more than 7 minutes apart at Elephant & Castle, Tabernacle between 0915 and 1015.



## 6.4 Sundays

### 1. London Bridge, City Hall to New Cross, Jerningham Road

0515 - 0720	Every 20 minutes
0721 - 0850	Every 15 minutes
0851 - 2310	Every 10 minutes
2311 - 0015	Every 12 minutes

First departure from London Bridge, City Hall no later than 0520.  
Last departure from London Bridge, City Hall no earlier than 0010.

Tenderers should ensure that buses are scheduled to be no more than 10 minutes apart at Brockley, Friendsbury Road between 1000 and 1100.

### 2. New Cross, Jerningham Road to London Bridge, City Hall

0505 - 0610	Every 20 minutes
0611 - 0855	Every 15 minutes
0856 - 2300	Every 10 minutes
2301 - 0005	Every 12 minutes

First departure from New Cross, Jerningham Road no later than 0510.  
Last departure from New Cross, Jerningham Road no earlier than 2400.

Tenderers should ensure that buses are scheduled to be no more than 10 minutes apart at Elephant & Castle, Tabernacle between 0940 and 1040.

## 6.5 Boxing Day

### 1. London Bridge, City Hall to New Cross, Jerningham Road

0800 - 0850	Every 15 minutes
0851 - 2310	Every 10 minutes
2311 - 0015	Every 12 minutes

First departure from London Bridge, City Hall no later than 0805.  
Last departure from London Bridge, City Hall no earlier than 0010.

Tenderers should ensure that buses are scheduled to be no more than 10 minutes apart at Brockley, Friendsbury Road between 1000 and 1100.

### 2. New Cross, Jerningham Road to London Bridge, City Hall

0805 - 0855	Every 15 minutes
0856 - 2300	Every 10 minutes
2301 - 0005	Every 12 minutes

First departure from New Cross, Jerningham Road no later than 0810.  
Last departure from New Cross, Jerningham Road no earlier than 2400.

Tenderers should ensure that buses are scheduled to be no more than 10 minutes apart at Elephant & Castle, Tabernacle between 0940 and 1040.

**Tenderers must indicate costs for this element of the service separately.**

## 6.6 Nightly

1. Trafalgar Square to New Cross, Jerningham Road

0015 - 0455            Every 30 minutes

First departure from Trafalgar Square no later than 0020.  
Last departure from Trafalgar Square no earlier than 0450.

2. New Cross, Jerningham Road to Trafalgar Square

0015 - 0455            Every 30 minutes

First departure from New Cross, Jerningham Road no later than 0020.  
Last departure from New Cross, Jerningham Road no earlier than 0450.

**Tenderers must identify the cost of the Nightly element of this service separately.**

## 7. MINIMUM PERFORMANCE STANDARDS

Please refer to Section 2.7 of Part A of the Guide for Tenderers.

Tenderers should note that the objective of the Operator of Route Nos. 343 & N343 shall be to operate all scheduled mileage and adhere **fully** to the published timetable. The Operator must use its best endeavours to achieve this.

The **minimum** standards of acceptable performance for Route No. 343 shall be:

Average Excess Wait Time:	No more than 1.30 minutes
Minimum Operated Mileage:	No less than 98.00%

The **minimum** standards of acceptable performance for Route No. N343 shall be:

Departing on Time	No less than 85.00%
Minimum Operated Mileage	No less than 99.00%

or as notified by the Corporation from time to time. The Operator will be required to achieve or better the standards.

### QSI Thresholds

The QSI threshold is the standard of performance to be achieved by the operator in order to qualify for an automatic contract extension (in accordance with Schedule IX of the Framework Agreement).

Average Excess Wait Time Threshold = 1.15 minutes

It is unlikely that the minimum number of QSI surveys for Threshold measurement will be conducted on Route No. N343 at present. However, this may change at a later date when a Threshold figure may be published.

### Summary of proposed QSI coverage: Route Nos. 343 & N343

Note: While London Buses undertakes to carry out QSI surveys at the times and locations specified below, it may prove impossible to rearrange a survey cancelled or nullified at short notice.

#### Towards City Hall

New Cross Gate  
Peckham

#### Towards New Cross Gate

London Bridge  
Peckham

Total scheduled manual QSI surveys per quarter = 64.

## 8. RUNNING TIMES

The current timetable for Route Nos. 343 & N343 can be viewed by prospective Tenderers on Caesar. Attention is drawn to the variations in running times at different times of the day. Please refer to Section 2.8 of Part A of the Guide for Tenderers for further information.

Tenderers should carefully check the existing running times to ensure that they are appropriate in present traffic conditions. Tenderers should particularly check the existing running times for the Mondays to Fridays interpeaks, Saturday afternoon shopping period and Sunday Shopping period.

It is expected that any changes to these running times can be accommodated within existing cycle times.

When reviewing existing, and devising new, running times Tenderers should refer to:

- the minimum performance standards for Route Nos. 343 & N343 in Section 7 above;
- the historical performance data provided in Section 1 Part B of the introduction to this ITT;
- the paragraph in Section 12 referring to the proposed extension of the Cashless Boarding zone throughout the whole of the London area.

Tenderers may consider if school summer holiday schedules, incorporating running time reductions, are desirable for this route. In this event, schedules and costs must be submitted separately.

## 9. LAYOVERS

Under normal circumstances, layover time on stands and at bus stations should be restricted to that required to provide a reliable service. Longer layovers for any other purpose may only be taken with the permission of the Corporation.

## 10. TIMING CONSTRAINTS

Route No. 343 should interwork with Route No. N343 to form a seamless 24 hour service.

Tenderers submitting bids should bear this requirement in mind when compiling schedules. This requirement will be negotiated with the successful Tenderer for this route to ensure that optimal interworking/separation is delivered within its schedules.

## 11. CONTROL STRATEGY

Route Nos. 343 & N343 can suffer from the effects of traffic congestion, making some form of route control essential in order to achieve or better the minimum performance standards for this route.

Tenderers should submit proposals on the control strategy they intend to adopt and the type of control they would intend to use by completing the form provided in Section 3: Part 7 of this ITT. The cost of this control should be included within the main Tender price.

Tenderers should also indicate how they intend to facilitate driver changeovers and meal reliefs for this route.

Further information is provided in Section 2.11 of Part A of the Guide for Tenderers.

## 12. OPERATIONAL CONSIDERATIONS

Tenderers should note the following operating considerations affecting Route Nos. 343 & N343:

- Route Nos. 343 & N343 can suffer from unpredictable traffic delays in the New Cross, Peckham, Elephant & Castle and London Bridge areas.

Tenderers should also note the following factors which may have an impact on Route Nos. 343 & N343 in the foreseeable future:

- It is anticipated that Cashless Boarding will be extended throughout London at some stage during the lifetime of this contract. **This is expected to lead to significant savings in running and recovery times to bus routes, and, therefore, potential resource (cycle time and PVR) savings are expected. Tenderers are required to identify and submit the level of savings per vehicle that could be achieved by reducing peak vehicle requirement, and / or how reliability targets could be revised when the Scheme is introduced.**

The above factors have been included to assist Tenderers and represents the information currently available to the Corporation. Tenderers should make their own enquiries about events which may impact upon the route and should form their own views about their likely effect upon it.

## 13. STOPPING ARRANGEMENTS

Buses operating on Route Nos. 343 & N343 must serve all stops on the line of route designated for the route.

## 14. TIMING POINTS & MILEAGES

### Timing Points

The required timing points (and codes) are shown in Caesar.

### Mileages for Route Nos. 343 & N343

London Bridge, City Hall to New Cross, Jerningham Road	7.6 miles
New Cross, Jerningham Road to London Bridge, City Hall	7.8 miles
Telegraph Hill, St Catherines Church to Peckham, Aylesham Centre	2.7 miles
Trafalgar Square to New Cross, Jerningham Road	9.9 miles
New Cross, Jerningham Road to Trafalgar Square	9.6 miles

Tenderers should note that:

- these measurements are believed to be accurate to within 0.5 miles, but no warranty or representation as to accuracy is given;
- out of service stand workings have not been measured and are not included within the above measurements;
- if alternative or additional measurements are used by the Tenderer, these must be stated in the tender submission;
- point to point measurements pertaining to recognised curtailment points or alternative terminals will be agreed with the successful Tenderer once the contract has been awarded.

## 15. VEHICLE LIVERY

All vehicles to be used on Route Nos. 343 & N343 from the commencement of the new Route Agreement must be in a livery that is exclusively Corporation red. The paint should be matched accurately to the colour as defined by the following manufacturer's specifications:

ICI London Bus Red P498 FPF 3

Other manufacturers should also be able to produce this specification from the ICI colour chart.

This requirement does not include the lower panels which may be in a different colour but which shall not exceed 50cm in height, or the rooftop which should be painted white so as to reduce temperatures inside the vehicle during the summer months.

The positioning and size of Operators' logos are to be agreed between the Operator and the Corporation and, where possible, these should be above the front doors on the nearside of the vehicles and above the drivers' offside cab windows.

All livery proposals must be submitted to the Contracts Tendering Manager for approval.

## 16. STANDS AND BLINDS

Tenderers should note that under normal circumstances, the specific restrictions relating to each stand will apply to the whole stand at all times. Any variation to such standing arrangements must be agreed by the Corporation. In addition, Tenderers should note the following general requirements:

- 1) Drivers MUST switch off engines during layover periods at bus stations or on stands.
- 2) No meal reliefs may be taken on any stand (on or off line of route) without the permission of the Corporation.
- 3) No crew ferry vehicles may enter any stand (on or off line of route) without the permission of the Corporation.
- 4) Destination blind displays to be used are shown under each stand description. Tenderers may suggest, within their bids, alternative blind displays.
- 5) The intermediate (also known as via) blind display to be used on the nearside of the vehicle is shown in the box below:

343 via Peckham
-----------------

N343 via Peckham
------------------

For further information, please refer to Annex C of the Framework Agreement: General Conditions relating to the use of London Buses' Bus Stations and Stands.



# LONDON BUSES - ROUTE DESCRIPTION

## ROUTE 343: London Bridge, City Hall - New Cross, Jerningham Road

**Date of Structural Change:** 5 February 2011.

**Date of Service Change:** 5 February 2011.

**Reason for Issue:** New Tender.

### STREETS TRAVERSED

**Towards New Cross, Jerningham Road:** Queen Elizabeth Street, Tooley Street, Duke Street Hill, Borough High Street, Newington Causeway, Elephant And Castle, Walworth Road, Heygate Street, Rodney Road, Flint Street, East Street, Thurlow Street, Albany Road, Wells Way, Southampton Way, Peckham Road, Peckham High Street, Clayton Road, Hanover Park, Rye Lane, Peckham Rye, Peckham Rye (East Side), Cheltenham Road, Ivydale Road, Merttins Road, St Norbert Road, Friendsbury Road, Avignon Road, Pepys Road, Jerningham Road.

**Towards London Bridge, City Hall:** Jerningham Road, New Cross Road, Pepys Road, Avignon Road, Friendsbury Road, St Norbert Road, Merttins Road, Ivydale Road, Cheltenham Road, Peckham Rye, Peckham Rye (East Side), East Dulwich Road, Peckham Rye, Rye Lane, Peckham High Street, Peckham Road, Southampton Way, Cottage Green, Wells Way, Albany Road, Thurlow Street, East Street, Flint Street, Rodney Road, Heygate Street, Walworth Road, Elephant And Castle, Newington Causeway, Borough High Street, Duke Street Hill, Tooley Street, Tower Bridge Road, Queen Elizabeth Street.

### STANDING AND TURNING POINTS

#### TOWER BRIDGE ROAD, QUEEN ELIZABETH STREET

Public stand for two buses on the south side of Queen Elizabeth Street commencing at a point 15 metres east of Tooley Street and extending 24 metres east.

Buses proceed from Queen Elizabeth Street direct to stand, departing to Queen Elizabeth Street. Set down in Queen Elizabeth Street, at Stop R and pick up in Queen Elizabeth Street, at Stop R.

**AVAILABILITY:** At any time.

**OPERATING RESTRICTIONS:** No more than 2 buses on Route 343 should be scheduled to stand at any one time.

**MEAL RELIEFS:** No meal relief vehicles to stand at any time.

**FERRY VEHICLES:** No ferry vehicles to park on stand at any time.

**DISPLAY:** City Hall.

## **ELEPHANT & CASTLE, SOUTHWARK BRIDGE ROAD (from NEW CROSS, JERNINGHAM ROAD)**

Public stand in two portions:

1 - For five buses on the west side of Southwark Bridge Road, commencing 10 metres north of the centre of Keyworth Street and extending 54 metres north.

2 - Overflow stand for two buses on the south side (offside) of Gaunt Street extending 20 metres. Stand flag BP3514.

Buses proceed from Newington Causeway via Southwark Bridge Road to stand, departing via Southwark Bridge Road and Gaunt Street to Newington Causeway. Set down in Newington Causeway, at Stop F and pick up in Newington Causeway, at Stop G.

AVAILABILITY:	At any time.
OPERATING RESTRICTIONS:	Unscheduled curtailments only.
MEAL RELIEFS:	No meal relief vehicles to stand at any time.
FERRY VEHICLES:	No ferry vehicles to park on stand at any time.
DISPLAY:	Elephant & Castle.

## **PECKHAM BUS STATION**

From London Bridge, City Hall.

Buses proceed from Peckham High Street via Peckham Bus Station and Peckham High Street departing to Peckham Road. Set down in Peckham High Street, at stop B and pick up in Peckham Road, at stop S.

From New Cross, Jerningham Road.

Buses proceed from Rye Lane via Hanover Park, Clayton Road, Peckham High Street, Peckham Bus Station and Peckham High Street departing to Clayton Road. Set down in Rye Lane, at stop U and pick up in Clayton Road, at stop K.

AVAILABILITY:	At any time.
OPERATING RESTRICTIONS:	<b>Turning Point Only - Buses must not stand</b>
DISPLAY:	Peckham.

## **PECKHAM RYE, WEST SIDE (from London Bridge, City Hall)**

Public offside stand on west side of Peckham Rye East, commencing 29 metres south of a point opposite Phillip Walk and extending 20 metres North.

Buses proceed from Rye Lane via Peckham Rye to stand, departing via Peckham Rye, Peckham Rye (East Side) and East Dulwich Road to Peckham Rye. Set down in Rye Lane, at Stop EA and pick up in Peckham Rye, at Stop WL.

AVAILABILITY:	At any time.
OPERATING RESTRICTIONS:	Unscheduled curtailments only
MEAL RELIEFS:	No meal relief vehicles to stand at any time.
FERRY VEHICLES:	No ferry vehicles to park on stand at any time.
DISPLAY:	Peckham Rye.

### **BROCKLEY, FRENSBURY ROAD (from London Bridge, City Hall)**

Public stand for two buses on west side of Frensbury Road, commencing 12 metres north of lamp standard 16 extending 24 metres south.

Buses proceed from Frensbury Road direct to stand, departing via Frensbury Road, Avignon Road, Finland Road, Mantle Road, St Asaph Road and Revelon Road to Frensbury Road. Set down in Frensbury Road, at Stop BN and pick up in Frensbury Road, at Stop BP.

AVAILABILITY:	At any time.
OPERATING RESTRICTIONS:	Unscheduled curtailments only.
MEAL RELIEFS:	No meal relief vehicles to stand at any time.
FERRY VEHICLES:	No ferry vehicles to park on stand at any time.
DISPLAY:	Brockley.

### **NEW CROSS GATE, JERNINGHAM ROAD**

Public stand for three buses on west side of Jerningham Road, commencing 2 metres north of lamp standard 2 extending 31 metres south.

Buses proceed from Jerningham Road direct to stand, departing to Jerningham Road. Set down in Jerningham Road, at Stop N and pick up in Jerningham Road, at Stop N.

AVAILABILITY:	At any time.
OPERATING RESTRICTIONS:	No more than 2 buses on Route 343 should be scheduled to stand at any one time.
MEAL RELIEFS:	No meal relief vehicles to stand at any time.
FERRY VEHICLES:	No ferry vehicles to park on stand at any time.
DISPLAY:	New Cross Gate.

# LONDON BUSES - ROUTE DESCRIPTION

## ROUTE N343: Trafalgar Square - New Cross, Jerningham Road

**Date of Structural Change:** 5 February 2011.

**Date of Service Change:** 5 February 2011.

**Reason for Issue:** {To be specified}.

### STREETS TRAVERSED

**Towards New Cross, Jerningham Road:** Duncannon Street, Strand, Aldwych, Strand, Lancaster Place, Waterloo Bridge, Waterloo Road, Stamford Street, Southwark Street, Borough High Street, Railway Approach, London Bridge Bus Station, London Bridge Street, Borough High Street, Newington Causeway, Elephant And Castle, Walworth Road, Heygate Street, Rodney Road, Flint Street, East Street, Thurlow Street, Albany Road, Wells Way, Southampton Way, Peckham Road, Peckham High Street, Clayton Road, Hanover Park, Rye Lane, Peckham Rye, Peckham Rye (East Side), Cheltenham Road, Ivydale Road, Merttins Road, St Norbert Road, Frensbury Road, Avignon Road, Pepys Road, Jerningham Road.

**Towards Trafalgar Square:** Jerningham Road, New Cross Road, Pepys Road, Avignon Road, Frensbury Road, St Norbert Road, Merttins Road, Ivydale Road, Cheltenham Road, Peckham Rye, East Dulwich Road, Peckham Rye, Rye Lane, Peckham High Street, Peckham Road, Southampton Way, Cottage Green, Wells Way, Albany Road, Thurlow Street, East Street, Flint Street, Rodney Road, Heygate Street, Walworth Road, Elephant And Castle, Newington Causeway, Borough High Street, Railway Approach, London Bridge Bus Station, Bay E, London Bridge Street, Borough High Street, Southwark Street, Stamford Street, Waterloo Road, Tenison Way, Waterloo Road, Waterloo Bridge, Lancaster Place, Strand, Charing Cross, Whitehall.

## **STANDING AND TURNING POINTS**

### **TRAFALGAR SQUARE, NORTHUMBERLAND AVENUE, SOUTH SIDE**

Public stand for four buses on south side of Northumberland Avenue in 2 parts:

1. For two buses commencing at a point 16 metres east of the centre-line of Great Scotland Yard, extending 25 metres east;
2. For two buses commencing at a point 55 metres west of centre-line of Whitehall Place, extending 25 metres east.

Buses proceed from Whitehall via Whitehall Place and Northumberland Avenue to stand, departing via Northumberland Avenue, Charing Cross, Trafalgar Square (South Side) and Trafalgar Square (East Side) to Duncannon Street. Set down in Whitehall, at Stop N and pick up in Duncannon Street, at Stop G.

AVAILABILITY:	At any time.
OPERATING RESTRICTIONS:	No more than 2 buses on Route N343 should be scheduled to stand at any one time.
MEAL RELIEFS:	No meal relief vehicles to stand at any time.
FERRY VEHICLES:	No ferry vehicles to park on stand at any time.
DISPLAY:	Trafalgar Square.

### **ALDWYCH, EAST ARM (from NEW CROSS, JERNINGHAM ROAD)**

Public offside stand for 6 buses on south side of Aldwych (east arm) commencing 10 metres west of Melbourne Place and extending 67 metres west. Overflow public stand for 3 buses on south side of Strand commencing 10 metres east of Surrey Street and extending 36 metres east.

Buses proceed from Lancaster Place via Aldwych to stand, departing via Aldwych to Strand. Set down in Lancaster Place, at Stop T and pick up in Strand, at Stop S.

AVAILABILITY:	At any time.
OPERATING RESTRICTIONS:	Unscheduled curtailments only.
MEAL RELIEFS:	No meal relief vehicles to stand at any time.
FERRY VEHICLES:	No ferry vehicles to park on stand at any time.
DISPLAY:	Aldwych.

### **LONDON BRIDGE STATION (from NEW CROSS, JERNINGHAM ROAD)**

Buses proceed from Bay E departing to London Bridge Street. Set down in Bay E, at Stop E and pick up in London Bridge Street, at Stop A.

AVAILABILITY:	At any time.
OPERATING RESTRICTIONS:	<b>Turning Point Only - Buses must not stand</b>
DISPLAY:	London Bridge.

**ELEPHANT & CASTLE, SOUTHWARK BRIDGE ROAD (from NEW CROSS, JERNINGHAM ROAD)**

Public stand in two portions:

1 - For five buses on the west side of Southwark Bridge Road, commencing 10 metres north of the centre of Keyworth Street and extending 54 metres north.

2 - Overflow stand for two buses on the south side (offside) of Gaunt Street extending 20 metres. Stand flag BP3514.

Buses proceed from Newington Causeway via Southwark Bridge Road to stand, departing via Southwark Bridge Road and Gaunt Street to Newington Causeway. Set down in Newington Causeway, at Stop F and pick up in Newington Causeway, at Stop G.

AVAILABILITY: At any time.  
OPERATING RESTRICTIONS: Unscheduled curtailments only.  
MEAL RELIEFS: No meal relief vehicles to stand at any time.  
FERRY VEHICLES: No ferry vehicles to park on stand at any time.  
DISPLAY: Elephant & Castle.

**PECKHAM RYE, WEST SIDE (from Trafalgar Square)**

Public offside stand on west side of Peckham Rye East, commencing 29 metres south of a point opposite Phillip Walk and extending 20 metres North.

Buses proceed from Rye Lane via Peckham Rye to stand, departing via Peckham Rye, Peckham Rye (East Side) and East Dulwich Road to Peckham Rye. Set down in Rye Lane, at Stop EA and pick up in Peckham Rye, at Stop WL.

AVAILABILITY: At any time.  
OPERATING RESTRICTIONS: Unscheduled curtailments only  
MEAL RELIEFS: No meal relief vehicles to stand at any time.  
FERRY VEHICLES: No ferry vehicles to park on stand at any time.  
DISPLAY: Peckham Rye.

**BROCKLEY, FRENSBURY ROAD (from Trafalgar Square)**

Public stand for two buses on west side of Frensbury Road, commencing 12 metres north of lamp standard 16 extending 24 metres south.

Buses proceed from Frensbury Road direct to stand, departing via Frensbury Road, Avignon Road, Finland Road, Mantle Road, St Asaph Road and Revelon Road to Frensbury Road. Set down in Frensbury Road, at Stop BN and pick up in Frensbury Road, at Stop BP.

AVAILABILITY: At any time.  
OPERATING RESTRICTIONS: Unscheduled curtailments only.  
MEAL RELIEFS: No meal relief vehicles to stand at any time.  
FERRY VEHICLES: No ferry vehicles to park on stand at any time.  
DISPLAY: Brockley.

## **NEW CROSS GATE, JERNINGHAM ROAD**

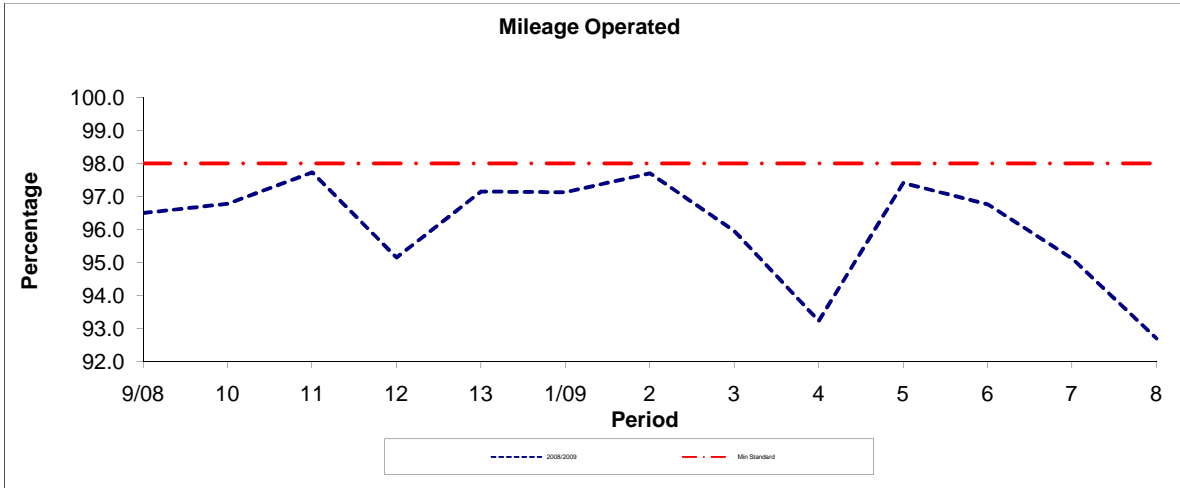
Public stand for three buses on west side of Jerningham Road, commencing 2 metres north of lamp standard 2 extending 31 metres south.

Buses proceed from Jerningham Road direct to stand, departing to Jerningham Road. Set down in Jerningham Road, at Stop N and pick up in Jerningham Road, at Stop N.

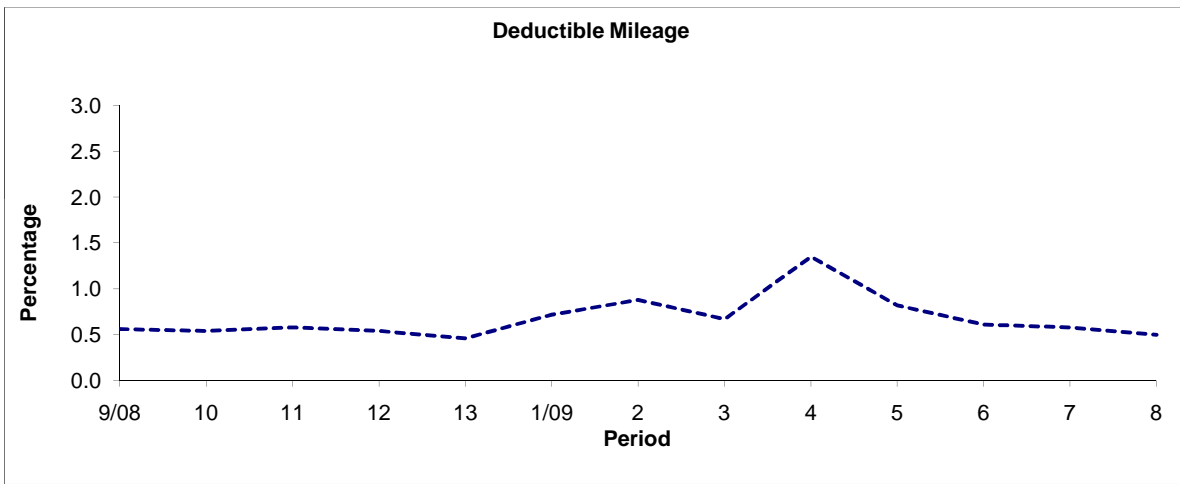
AVAILABILITY:	At any time.
OPERATING RESTRICTIONS:	No more than 2 buses on Route N343 should be scheduled to stand at any one time.
MEAL RELIEFS:	No meal relief vehicles to stand at any time.
FERRY VEHICLES:	No ferry vehicles to park on stand at any time.
DISPLAY:	New Cross Gate.

**PART B - PERFORMANCE STATISTICS**

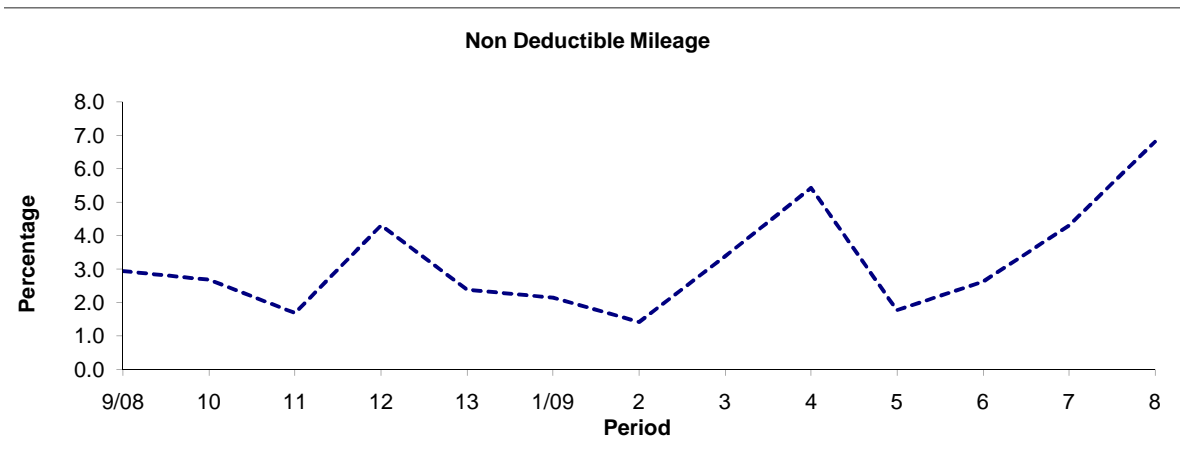
**Route 343**



Period	9/08	10	11	12	13	1/09	2	3	4	5	6	7	8
2008/2009	96.50	96.78	97.73	95.15	97.15	97.13	97.70	95.95	93.22	97.41	96.76	95.12	92.69
Min Standard	98.00	98.00	98.00	98.00	98.00	98.00	98.00	98.00	98.00	98.00	98.00	98.00	98.00



Period	9/08	10	11	12	13	1/09	2	3	4	5	6	7	8
2008/2009	0.56	0.54	0.58	0.54	0.46	0.72	0.88	0.67	1.35	0.82	0.61	0.58	0.50



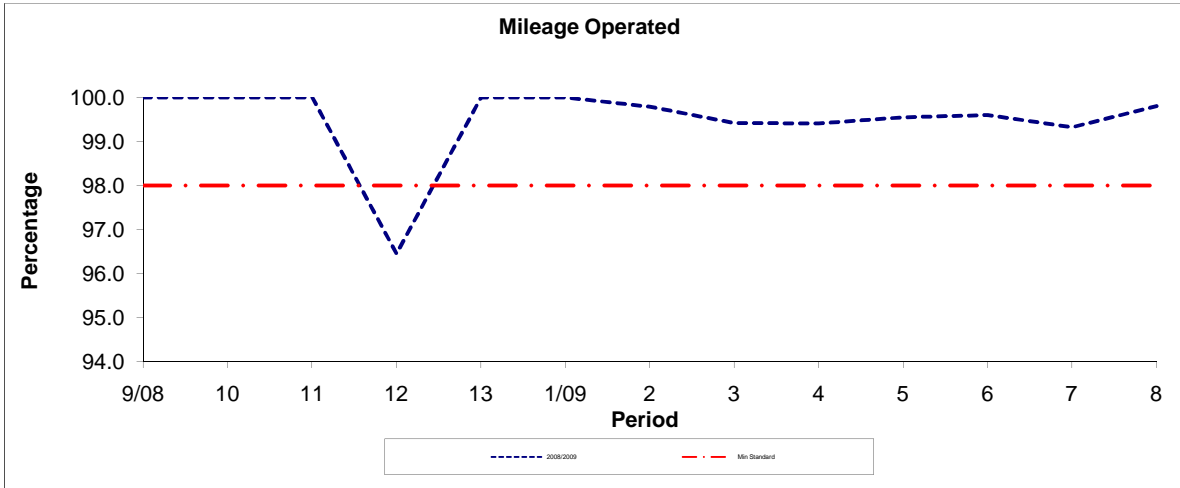
Period	9/08	10	11	12	13	1/09	2	3	4	5	6	7	8
2008/2009	2.94	2.68	1.69	4.31	2.39	2.15	1.42	3.38	5.43	1.77	2.63	4.30	6.81

**Note :** Mileage is based on 4 weeks data

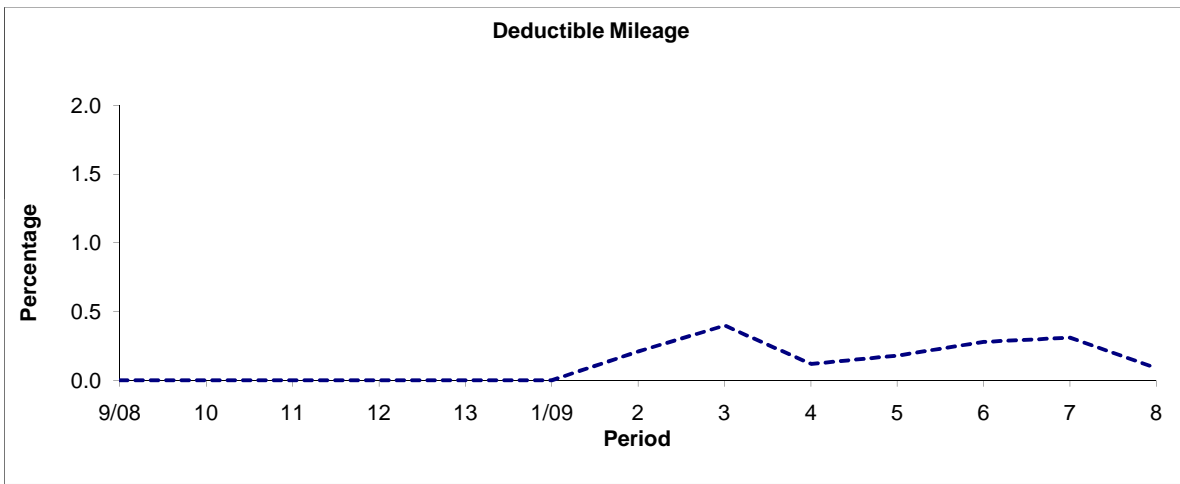


**PART B - PERFORMANCE STATISTICS**

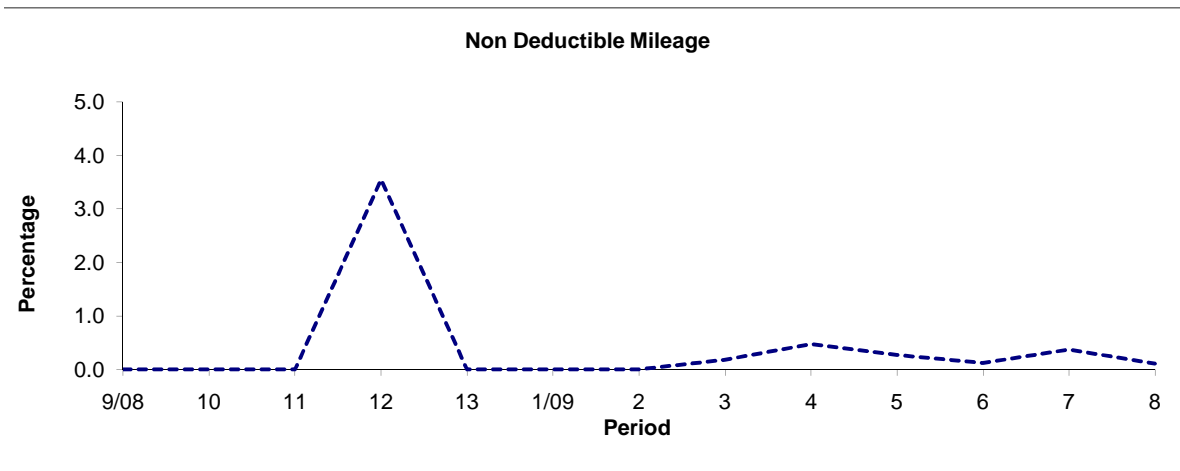
**Route N343**



Period	9/08	10	11	12	13	1/09	2	3	4	5	6	7	8
2008/2009	100.00	100.00	100.00	96.45	100.00	100.00	99.79	99.42	99.41	99.55	99.60	99.32	99.80
Min Standard	98.00	98.00	98.00	98.00	98.00	98.00	98.00	98.00	98.00	98.00	98.00	98.00	98.00



Period	9/08	10	11	12	13	1/09	2	3	4	5	6	7	8
2008/2009	0.00	0.00	0.00	0.00	0.00	0.00	0.21	0.40	0.12	0.18	0.28	0.31	0.09

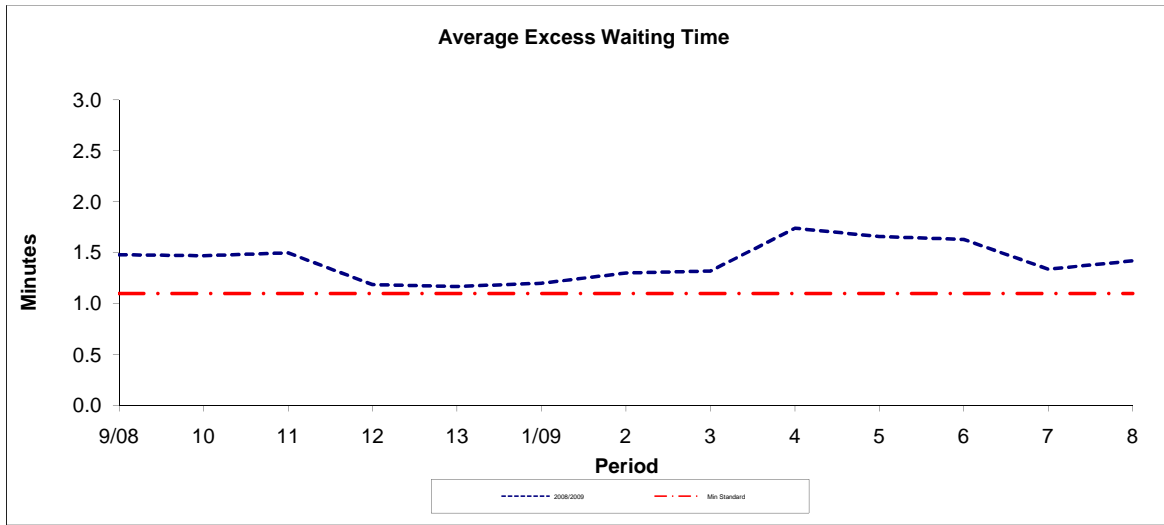


Period	9/08	10	11	12	13	1/09	2	3	4	5	6	7	8
2008/2009	0.00	0.00	0.00	3.55	0.00	0.00	0.00	0.18	0.47	0.27	0.12	0.37	0.11

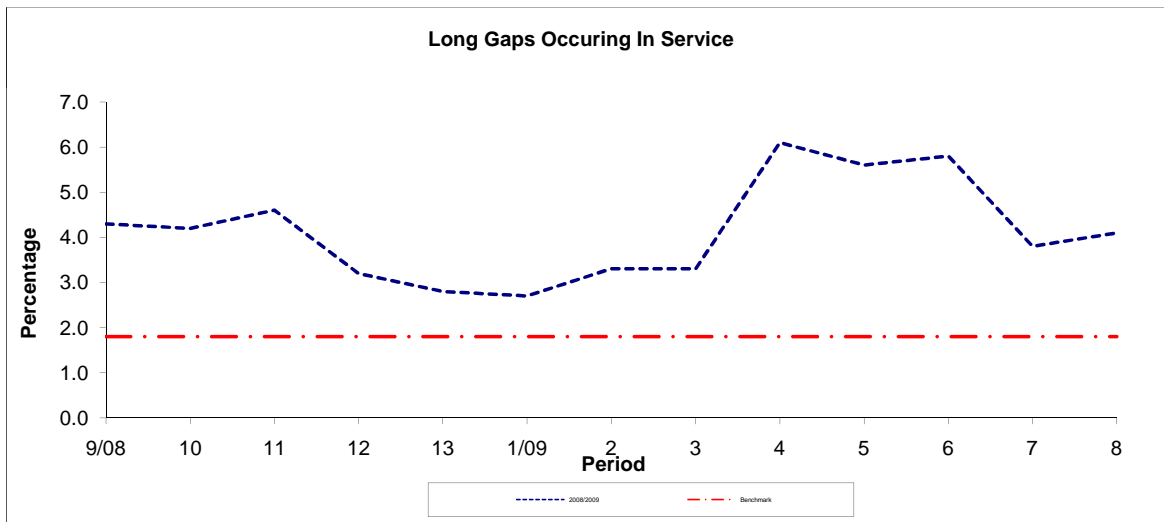
**Note :** Mileage is based on 4 weeks data

**PART B - PERFORMANCE STATISTICS**

**Route 343**



Period	9/08	10	11	12	13	1/09	2	3	4	5	6	7	8
2008/2009	1.48	1.47	1.50	1.19	1.17	1.20	1.30	1.32	1.74	1.66	1.63	1.34	1.42
Min Standard	1.10	1.10	1.10	1.10	1.10	1.10	1.10	1.10	1.10	1.10	1.10	1.10	1.10

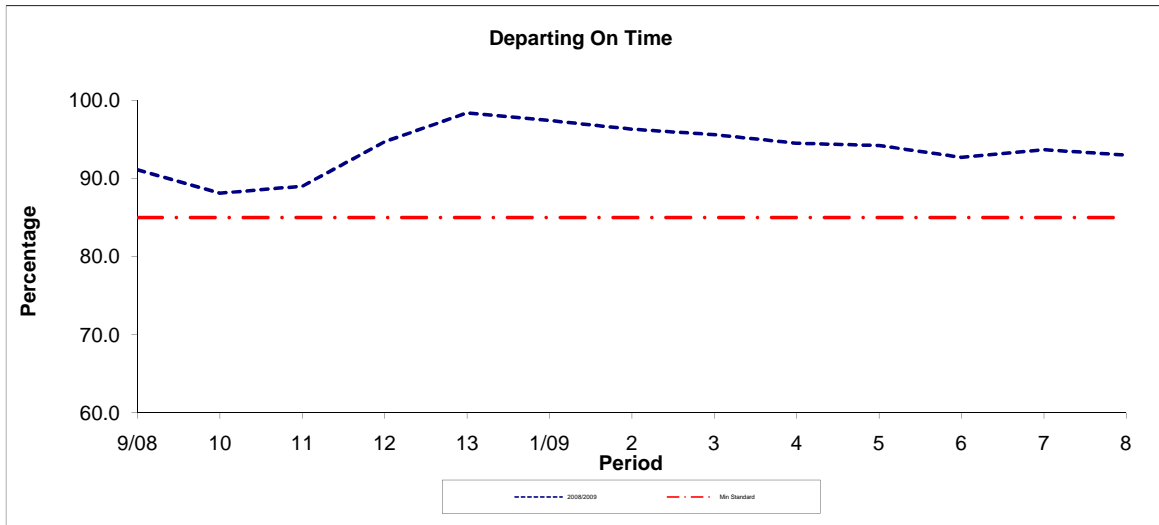


Period	9/08	10	11	12	13	1/09	2	3	4	5	6	7	8
2008/2009	4.30	4.20	4.60	3.20	2.80	2.70	3.30	3.30	6.10	5.60	5.80	3.80	4.10
Benchmark	1.80	1.80	1.80	1.80	1.80	1.80	1.80	1.80	1.80	1.80	1.80	1.80	1.80

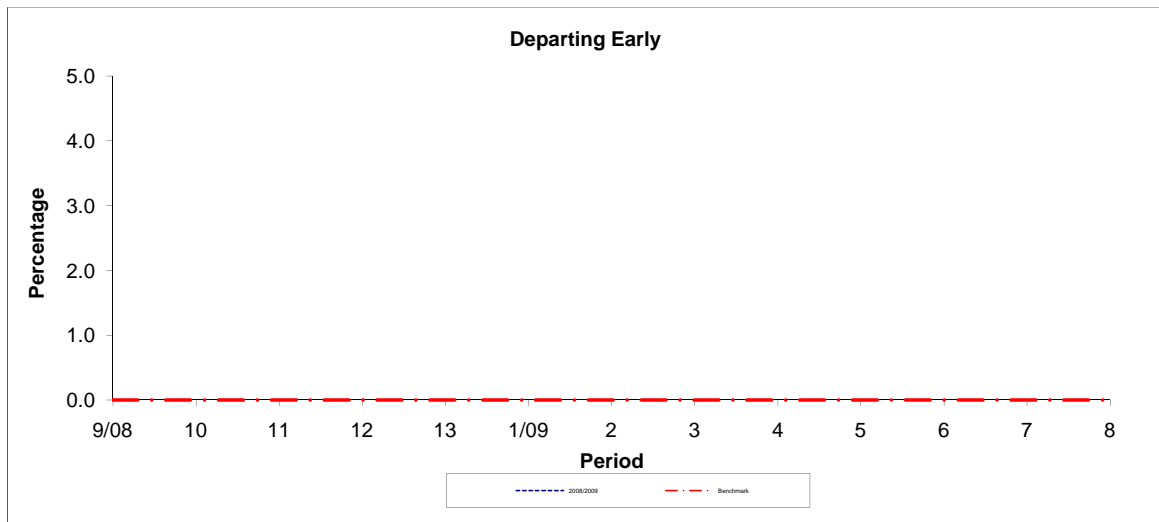
**Note :** Reliability is based on 12 weeks rolling data

**PART B - PERFORMANCE STATISTICS**

**Route N343**



Period	9/08	10	11	12	13	1/09	2	3	4	5	6	7	8
2008/2009	91.10	88.10	89.00	94.70	98.40	97.40	96.30	95.60	94.50	94.20	92.70	93.70	93.00
Min Standard	85.00	85.00	85.00	85.00	85.00	85.00	85.00	85.00	85.00	85.00	85.00	85.00	85.00



Period	9/08	10	11	12	13	1/09	2	3	4	5	6	7	8
2008/2009	0.00	0.00	0.00	0.00	0.00	0.00	0.00	0.00	0.00	0.00	0.00	0.00	0.00
Benchmark	0.00	0.00	0.00	0.00	0.00	0.00	0.00	0.00	0.00	0.00	0.00	0.00	0.00

**Note :** Reliability is based on 12 weeks rolling data