

7. Service Specification

Route: 313

Contract Reference: QC53802

This Service Specification forms section 7 of the ITT and should be read in conjunction with the ITT document, Version 1 dated 29 September 2011.

You are formally invited to tender for the provision of the bus service detailed below and in accordance with this Service Specification. Tenderers must ensure that a Compliant Tender is submitted and this will only be considered for evaluation if all parts of the Tender documents, as set out in section 11, have been received by the Corporation by the Date of Tender. The Tender must be fully completed in the required format, in accordance with the Instructions to Tenderers. A Compliant Tender must comply fully with the requirements of the Framework Agreement; adhere to the requirements of the Service Specification; and reflect the price of operating the Services with new vehicles.

Route Number	313
Terminus Points	Main Service: Chingford Station, Stop D and Potters Bar Station Mondays to Fridays Schooldays Journeys: Chingford Station, Stop D and Potters Bar, Dame Alice Owen School
Contract Basis	Incentivised
Commencement Date	5 th November 2016
Vehicle Type	Main Service: 60 capacity, dual door, single deck, minimum 10.8m long Mondays to Fridays Schooldays Journeys: 87 capacity, dual door, double deck
Current Maximum Approved Dimensions	10.8 metres long and 2.44 metres wide
New Vehicles Mandatory	Yes
Hybrid Price Required	Yes
Sponsored Route	No
Advertising Rights	Operator
Minimum Performance Standard	Departing on Time - No less than 82.00%
Extension Threshold	Departing on Time Threshold - 85.00%
Minimum Operated Mileage Standard	No less than 98.00%

The Date of Tender for this ITT is: No later than 12 Noon on Monday 9th November 2015

Tenderers should refer to section 3 of Part A for the Service Specification Explanatory Notes and Appendix B of section 5 for the Example Service Specification of the ITT document.

SERVICE SPECIFICATION

- 1) SERVICE SPEC - ROUTE SPECIFICATION INFORMATION
- 2) NOTES
- 3) SCHEDULE REQUIREMENTS & PINCHPOINTS
- 4) OPERATIONAL CONSIDERATIONS
- 5) ROUTE RECORD, CURRENT PERFORMANCE, QSI BY TIME OF DAY, IBUS MILEAGE & QSI POINTS

2) NOTES

Proposed Changes:

At this time, no changes are proposed to the existing service for introduction prior to the commencement of the new Route Agreement for Route No. 313.

Tenderers should note that there are no changes proposed as part of this Service Specification for Route No. 313.

Requirements for Registration:

The section of Route No. 313 between Potters Bar Station/Potters Bar, Dame Alice Owens School and the Hertsmere Unitary Authority Boundary at The Ridgeway (near M25 Junction 24 roundabout) will need to be registered with the Office of the Traffic Commissioner (East of England) 56 days before the operation commences. The registration should be sent to:

Office of the Traffic Commissioner (East of England)
Hillcrest House
386 Harehills Lane
Leeds
LS9 6NF

Copies of the registration should be sent to:

Keith White
Principal Transport Officer
Passenger Transport Unit
Hertfordshire County Council
PO Box 99
County Hall
Hertford
SG13 8TJ

and to:

Bus and Coach Licensing Team
Strategy and Planning
TfL Surface Transport
10th Floor, Zone G4
Palestra
197 Blackfriars Road
London
SE1 8NJ
e-mail: lsp@tfl.gov.uk

The cost of this and any future variation to this registration are to be met by the Operator.

2) NOTES

Operators should provide the following prices:

1. Annual diesel price - based on minimum 5 year contract.
2. Annual hybrid price - based on minimum 5 year contract.
3. Annual hybrid price - with upfront payment of capital difference between diesel and hybrid for 5 year contract.

3) SCHEDULE REQUIREMENTS & PINCHPOINTS

3.1) MONDAY TO FRIDAY SCHEDULE REQUIREMENTS & PINCHPOINTS

Chingford Station, Stop D to Potters Bar Station		Potters Bar Station to Chingford Station, Stop D			
First departure no later than 0550.		First departure no later than 0530.			
0545 - 2040	Every 20 minutes	0525 - 2030	Every 20 minutes		
2041 - 0045	Every 30 minutes	2031 - 0005	Every 30 minutes		
Last departure no earlier than 0040.		Last departure no earlier than 2400.			
Pinchpoints					
Chase Farm Hospital	0700 - 0900	20 minutes	Ponders End, Enfield Bus Garage	0655 - 0905	20 minutes
	1455 - 1635	20 minutes		1505 - 1645	20 minutes

3.2) MONDAY TO FRIDAY SCHOOLDAYS SCHEDULE REQUIREMENTS

Chingford Station, Stop D to Potters Bar, Dame Alice Owen School		Potters Bar, Dame Alice Owen School to Chingford Station, Stop D	
0730	One journey	1600	One journey

The journeys shown in Section 3.2 are specifically designed to meet the start and finish times of Dame Alice Owen School and should operate with an 87 capacity, dual door, double deck bus.

3.3) SATURDAY AND GOOD FRIDAY SCHEDULE REQUIREMENTS & PINCHPOINTS

Chingford Station, Stop D to Potters Bar Station		Potters Bar Station to Chingford Station, Stop D			
First departure no later than 0550.		First departure no later than 0530.			
0545 - 0720	Every 30 minutes	0525 - 0800	Every 30 minutes		
0721 - 2040	Every 20 minutes	0801 - 2000	Every 20 minutes		
2041 - 0045	Every 30 minutes	2001 - 0005	Every 30 minutes		
Last departure no earlier than 0040.		Last departure no earlier than 2400.			
Pinchpoints					
Chase Farm Hospital	0905 - 1105	20 minutes	Ponders End, Enfield Bus Garage	0905 - 1105	20 minutes

3) SCHEDULE REQUIREMENTS & PINCHPOINTS - Continued

3.4) SUNDAY AND PUBLIC HOLIDAYS (EXCEPT GOOD FRIDAY AND CHRISTMAS DAY) SCHEDULE REQUIREMENTS & PINCHPOINTS

Chingford Station, Stop D to Potters Bar Station		Potters Bar Station to Chingford Station, Stop D			
First departure no later than 0610.		First departure no later than 0630.			
0605 - 0045	Every 30 minutes	0625 - 0005	Every 30 minutes		
Last departure no earlier than 0040.		Last departure no earlier than 2400.			
Pinchpoints					
Chase Farm Hospital	1005 - 1135	30 minutes	Ponders End, Enfield Bus Garage	0955 - 1125	30 minutes

Tenderers must identify the cost of the Boxing Day element of this service separately.

4) OPERATIONAL CONSIDERATIONS

- 4.1) Route No. 313 should be separated from Route Nos. 121 & 307 between Ponders End, Enfield Bus Garage and Enfield Chase Station during all periods, where possible.
- 4.2) Route No. 313 can suffer unpredictable traffic delays in the Ponders End and Enfield areas (particularly Southbury Road).

5) ROUTE RECORD, CURRENT PERFORMANCE, QSI BY TIME OF DAY, IBUS MILEAGE & QSI POINTS

- 5.1) ROUTE RECORD
As per Busnet printout.
- 5.2) CURRENT PERFORMANCE
As per current print out.
- 5.3) QSI BY TIME OF DAY
As per current print out.
- 5.4) IBUS MILEAGE & QSI POINTS
As per current print out.

LONDON BUSES - ROUTE DESCRIPTION

ROUTE 313: Chingford Station - Dame Alice Owen School

Date of Structural Change: 5 November 2016.

Date of Service Change: 5 November 2016.

Reason for Issue: {To be specified}.

STREETS TRAVERSED

Towards Dame Alice Owen School: Chingford Bus Station, Station Road, The Green, Kings Head Hill, Lea Valley Road, Nags Head Road, Southbury Road, Genotin Road, Cecil Road, Church Street, Windmill Hill, The Ridgeway, Lavender Hill, Hunters Way, Private Road In Chase Farm Hospital Grounds, The Ridgeway, M25 Junction 24 Roundabout, Southgate Road, Mutton Lane, Darkes Lane, Potters Bar Station Forecourt, Darkes Lane, Mutton Lane, Dugdale Hill Lane.

Towards Chingford Station: Dugdale Hill Lane, Sawyers Lane, Baker Street, SanTERS Lane, Dugdale Hill Lane, Mutton Lane, Darkes Lane, Potters Bar Station Forecourt, Darkes Lane, Mutton Lane, Southgate Road, M25 Junction 24 Roundabout, The Ridgeway, Windmill Hill, Church Street, The Town, Southbury Road, Nags Head Road, Lea Valley Road, Kings Head Hill, The Green, Station Road, Chingford Bus Station.

AUTHORISED STANDS, CURTAILMENT POINTS, & BLIND DESCRIPTIONS

Please note that only stands, curtailment points, & blind descriptions as detailed in this contractual document may be used.

CHINGFORD BUS STATION, BAY D

Private stand for 2 buses at Stop D in Chingford Bus Station on south side of Station Road. Buses proceed from Chingford Bus Station direct to stand, departing to Chingford Bus Station. Set down in Chingford Bus Station, at Stop D (34018 - Chingford Station #, Last Stop on LOR: 34018 - Chingford Station #) and pick up in Chingford Bus Station, at Stop D (34018 - Chingford Station #, First Stop on LOR: 34018 - Chingford Station #).

AVAILABILITY:	At any time.
OPERATING RESTRICTIONS:	No more than 1 bus on Route 313 should be scheduled to stand at any one time.
MEAL RELIEFS:	No meal relief vehicles to stand at any time.
FERRY VEHICLES:	No ferry vehicles to park on stand at any time.
BLIND DISPLAY:	Chingford Station.

PONDERS END, MOLLISON AVENUE

From Chingford Station.

Buses proceed from Lea Valley Road departing to Lea Valley Road. Set down in Lea Valley Road, at Stop PJ (20251 - Wharf Road, Last Stop on LOR: 20251 - Wharf Road) and pick up in Lea Valley Road, at Stop PH (20250 - Wharf Road, First Stop on LOR: 20250 - Wharf Road).

From Dame Alice Owen School.

Buses proceed from Lea Valley Road departing to Lea Valley Road. Set down in Lea Valley Road, at Stop PS (33173 - Mollison Avenue / Ponders End #, Last Stop on LOR: 33173 - Mollison Avenue / Ponders End #) and pick up in Lea Valley Road, at Stop PK (33174 - Ponders End Station #, First Stop on LOR: 33174 - Ponders End Station #).

AVAILABILITY: At any time.
OPERATING RESTRICTIONS: **Turning Point Only - Buses must not stand**
BLIND DISPLAY: Ponders End, Mollison Avenue.

PONDERS END, ENFIELD BUS GARAGE

Private stand on forecourt of Arriva's Enfield Bus Garage.

From Chingford Station.

Buses proceed from Southbury Road via Ponders End Bus Garage to stand, departing via Ponders End Bus Garage to Southbury Road. Set down in Southbury Road, at Stop D (13525 - Glyn Road, Last Stop on LOR: 13525 - Glyn Road) and pick up in Southbury Road, at Stop C (13522 - Glyn Road, First Stop on LOR: 13522 - Glyn Road).

From Dame Alice Owen School.

Buses proceed from Southbury Road via Ponders End Bus Garage to stand, departing via Ponders End Bus Garage to Southbury Road. Set down in Southbury Road, at Stop S (14816 - Crown Road, Last Stop on LOR: 14816 - Crown Road) and pick up in Southbury Road, at Stop B (13523 - Enfield Bus Garage / Southbury Station #, First Stop on LOR: 13523 - Enfield Bus Garage / Southbury Station #).

AVAILABILITY: At any time.
OPERATING RESTRICTIONS: Unscheduled curtailments only.
MEAL RELIEFS: No meal relief vehicles to stand at any time.
FERRY VEHICLES: No ferry vehicles to park on stand at any time.
BLIND DISPLAY: Ponders End, Bus Garage.

ENFIELD, LITTLE PARK GARDENS

Private stand for up to 6 buses in Bus Parking Area on south side of Little Park Gardens.

From Chingford Station.

Buses proceed from Cecil Road via Little Park Gardens and Bus Parking Area to stand, departing via Bus Parking Area and Little Park Gardens to Church Street. Set down in Little Park Gardens, at Alighting Point (BP750 - Little Park Gardens, Last Stop on LOR: BP4975 - Enfield Town / Cecil Road) and pick up in Church Street, at Stop E (14997 - Enfield Town / Church Street, First Stop on LOR: 14997 - Enfield Town / Church Street).

From Dame Alice Owen School.

Buses proceed from Church Street via Little Park Gardens and Bus Parking Area to stand, departing via Bus Parking Area, Little Park Gardens, Church Street, The Town, Southbury Road and Genotin Road to Cecil Road. Set down in Little Park Gardens, at Alighting Point (BP750 - Little Park Gardens, Last Stop on LOR: 16801 - Enfield Chase Station #) and pick up in Cecil Road, at Stop W (BP4975 - Enfield Town / Cecil Road, First Stop on LOR: BP4975 - Enfield Town / Cecil Road).

AVAILABILITY:	At any time.
OPERATING RESTRICTIONS:	Unscheduled curtailments only.
MEAL RELIEFS:	No meal relief vehicles to stand at any time.
FERRY VEHICLES:	No ferry vehicles to park on stand at any time.
BLIND DISPLAY:	Enfield.
OTHER INFORMATION:	Buses should stand for minimal time only.

CHASE FARM HOSPITAL, THE RIDGEWAY (from Chingford Station)

Public stand for one bus on east side of The Ridgeway, commencing opposite Nos 84/86 and extending 11 metres north.

Buses proceed from Private Road In Chase Farm Hospital Grounds via The Ridgeway to stand, departing to The Ridgeway. Set down in The Ridgeway, at Alighting Point (18883 - Chase Farm Hospital / The Ridgeway, Last Stop on LOR: 70337 - Chase Farm Hospital) and pick up in The Ridgeway, at Stop B (18883 - Chase Farm Hospital / The Ridgeway, First Stop on LOR: 18883 - Chase Farm Hospital / The Ridgeway).

AVAILABILITY:	At any time.
OPERATING RESTRICTIONS:	Unscheduled curtailments only.
MEAL RELIEFS:	No meal relief vehicles to stand at any time.
FERRY VEHICLES:	No ferry vehicles to park on stand at any time.
BLIND DISPLAY:	Chase Farm Hospital.

POTTERS BAR STATION, NORTH SIDE (from Chingford Station)

Private stand for one bus at Stop C on north side of forecourt of Potters Bar Station, adjacent to Sainsbury's store.

Buses proceed from Potters Bar Station Forecourt direct to stand, departing to Potters Bar Station Forecourt. Set down in Potters Bar Station Forecourt, at Stop C (OC35 - Potters Bar Station #, Last Stop on LOR: OC05 - Potters Bar Station) and pick up in Potters Bar Station Forecourt, at Stop D (OC35 - Potters Bar Station #, First Stop on LOR: OC05 - Potters Bar Station).

AVAILABILITY: At any time.
OPERATING RESTRICTIONS: No more than 1 bus on Route 313 should be scheduled to stand at any one time.
MEAL RELIEFS: No meal relief vehicles to stand at any time.
FERRY VEHICLES: No ferry vehicles to park on stand at any time.
BLIND DISPLAY: Potters Bar Station.

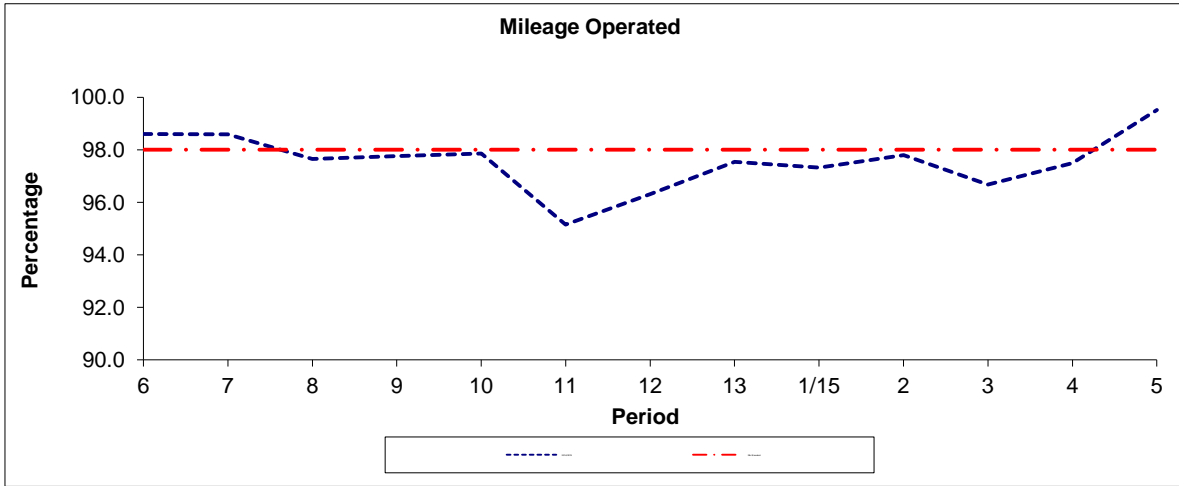
POTTERS BAR, DAME ALICE OWEN'S SCHOOL

Buses proceed out of service from Dugdale Hill Lane. Buses depart from out of service to Dugdale Hill Lane. Set down in Dugdale Hill Lane (OC11 - Dame Alice Owen's School, Last Stop on LOR: OC11 - Dame Alice Owen's School) and pick up in Dugdale Hill Lane (OC11 - Dame Alice Owen's School, First Stop on LOR: OC11 - Dame Alice Owen's School).

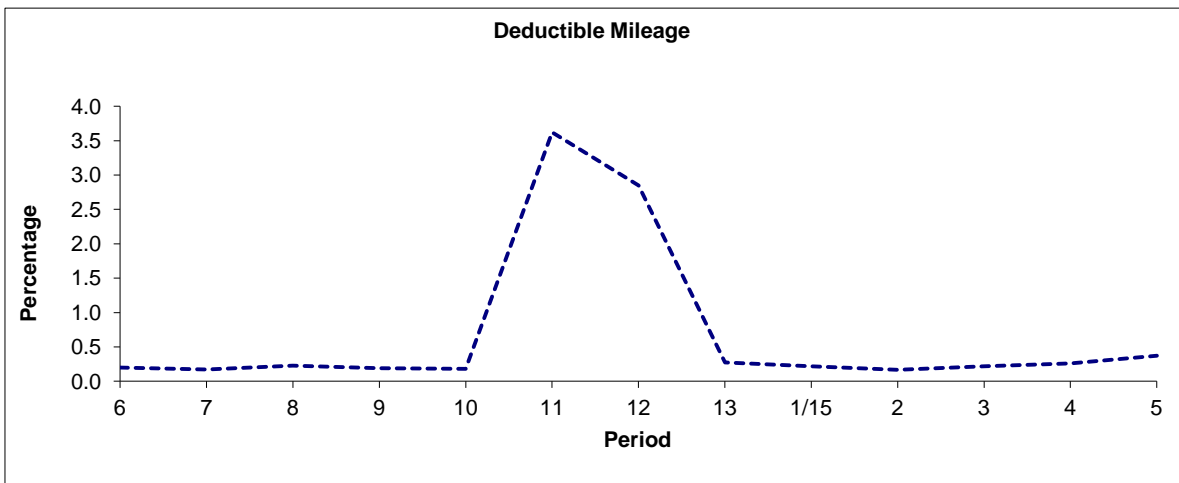
AVAILABILITY: At any time.
OPERATING RESTRICTIONS: None.
BLIND DISPLAY: Dame Alice Owen's School.

PART B - PERFORMANCE STATISTICS

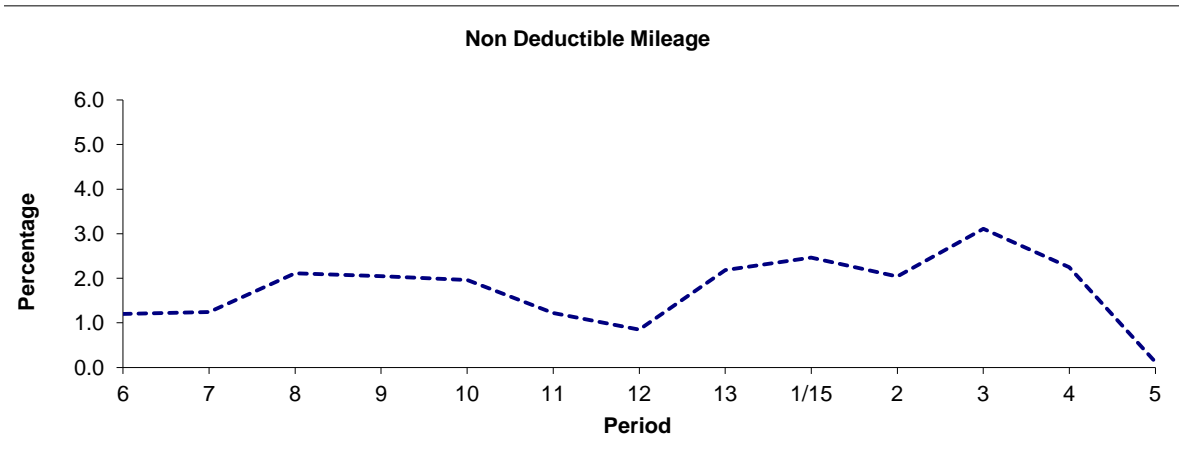
Route 313



Period	6	7	8	9	10	11	12	13	1/15	2	3	4	5
2014/2015	98.60	98.58	97.65	97.76	97.86	95.15	96.30	97.54	97.32	97.79	96.67	97.49	99.51
Min Standard	98.00	98.00	98.00	98.00	98.00	98.00	98.00	98.00	98.00	98.00	98.00	98.00	98.00



Period	6	7	8	9	10	11	12	13	1/15	2	3	4	5
2014/2015	0.20	0.17	0.23	0.19	0.18	3.62	2.85	0.27	0.22	0.17	0.22	0.26	0.37

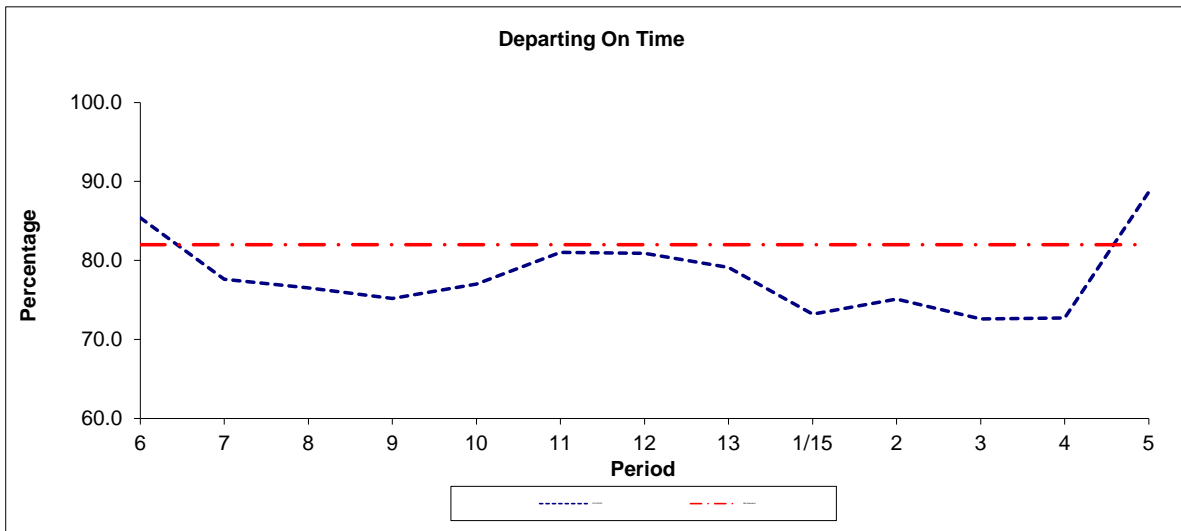


Period	6	7	8	9	10	11	12	13	1/15	2	3	4	5
2014/2015	1.20	1.24	2.12	2.04	1.96	1.22	0.85	2.18	2.46	2.04	3.11	2.25	0.12

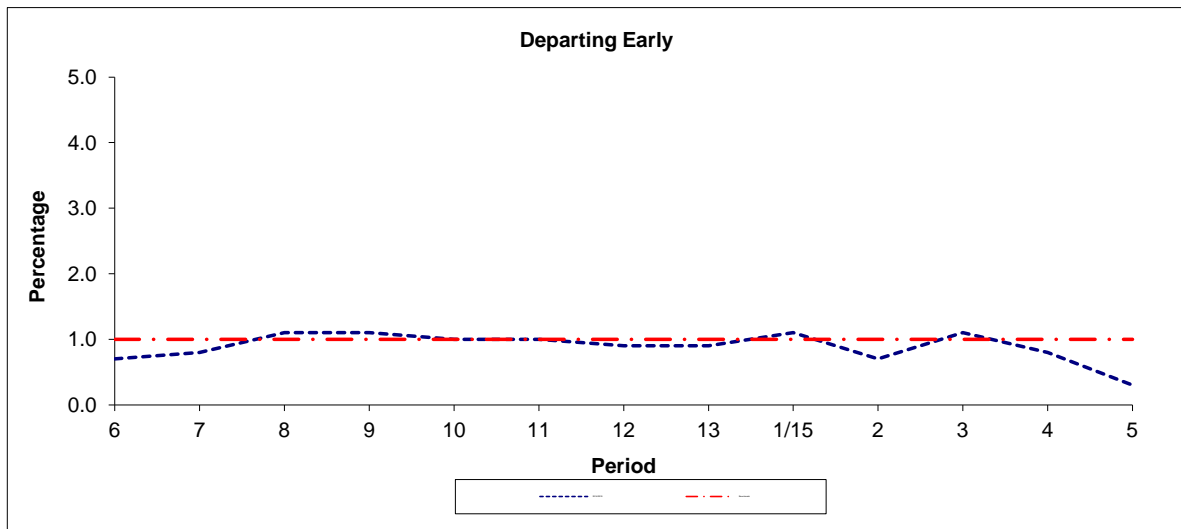
Note : Mileage is based on 4 weeks data
 Deductible Mileage was adversely affected by industrial action in periods 11 and 12 14/15.

PART B - PERFORMANCE STATISTICS

Route 313



Period	6	7	8	9	10	11	12	13	1/15	2	3	4	5
2014/2015	85.4	77.6	76.5	75.2	77.0	81.0	80.9	79.1	73.2	75.1	72.6	72.7	88.7
Min Standard	82.0	82.0	82.0	82.0	82.0	82.0	82.0	82.0	82.0	82.0	82.0	82.0	82.0



Period	6	7	8	9	10	11	12	13	1/15	2	3	4	5
2014/2015	0.7	0.8	1.1	1.1	1.0	1.0	0.9	0.9	1.1	0.7	1.1	0.8	0.3
Benchmark	1.0	1.0	1.0	1.0	1.0	1.0	1.0	1.0	1.0	1.0	1.0	1.0	1.0

Note : Reliability is actual performance under full iBus (4 weeks data).
 Minimum Standards and Benchmarks are those applicable under the new contract.

**ROUTE 313 - FULL IBUS RESULTS BY TIME OF DAY
 QUARTER 2 14/15 TO QUARTER 1 15/16 (21/06/14 - 26/0615)**

MONDAY - FRIDAY

Time Range	Expected Buses	Observed Buses	Observed Buses (%)	Linked Buses (%)	On Time (%)	Non Arrival / Not Linked (%)	Early (%)	Late (%)
05:00 - 07:00	10,959.	10,729.	97.9	99.0	92.0	1.0	0.1	6.9
07:00 - 10:00	27,812.	26,962.	96.9	92.2	71.4	8.4	1.1	19.1
10:00 - 13:00	26,949.	26,683.	99.0	98.3	90.2	1.7	0.4	7.6
13:00 - 16:00	26,899.	26,758.	99.5	98.7	86.6	1.4	0.5	11.5
16:00 - 19:00	27,866.	26,879.	96.5	90.7	65.3	9.4	1.7	23.7
19:00 - 22:00	24,344.	23,631.	97.1	97.5	84.4	3.0	0.9	11.8
22:00 - 24:00	11,897.	12,256.	103.0	98.9	90.1	1.2	0.3	8.4
All Locations Summary	156,726	153,898	98.2	95.9	79.0	5.0	0.9	15.1

SATURDAY

Time Range	Expected Buses	Observed Buses	Observed Buses (%)	Linked Buses (%)	On Time (%)	Non Arrival / Not Linked (%)	Early (%)	Late (%)
05:00 - 07:00	1,720.	1,704.	99.1	99.2	95.8	0.8	0.1	3.3
07:00 - 10:00	5,260.	4,989.	94.8	96.1	69.0	4.4	0.2	26.3
10:00 - 13:00	5,844.	5,709.	97.7	97.3	78.5	2.7	1.2	17.5
13:00 - 16:00	5,686.	5,601.	98.5	94.9	67.6	5.5	1.5	25.5
16:00 - 19:00	5,839.	5,783.	99.0	97.8	86.0	2.3	1.8	9.9
19:00 - 22:00	5,054.	5,012.	99.2	97.6	71.6	2.5	0.1	25.9
22:00 - 24:00	2,588.	2,635.	101.8	99.4	89.6	0.6	0.3	9.5
All Locations Summary	31,991	31,433	98.3	97.1	76.3	3.3	1.1	19.3

SUNDAY AND BANK HOLIDAYS

Time Range	Expected Buses	Observed Buses	Observed Buses (%)	Linked Buses (%)	On Time (%)	Non Arrival / Not Linked (%)	Early (%)	Late (%)
05:00 - 07:00	928.	896.	96.6	99.8	94.4	0.3	0.1	5.2
07:00 - 10:00	4,176.	4,113.	98.5	99.3	89.0	0.8	0.2	10.0
10:00 - 13:00	4,109.	4,025.	98.0	98.4	73.7	1.7	0.3	24.3
13:00 - 16:00	4,095.	4,090.	99.9	93.6	50.8	6.8	1.0	41.4
16:00 - 19:00	4,279.	4,212.	98.4	98.6	87.0	1.4	0.7	10.9
19:00 - 22:00	4,173.	4,209.	100.9	98.6	85.0	1.4	0.3	13.3
22:00 - 24:00	2,783.	2,810.	101.0	99.9	95.4	0.1	0.9	3.6
All Locations Summary	24,543	24,355	99.2	98.0	76.0	2.6	0.6	20.8

ALL DAYS

Time Range	Expected Buses	Observed Buses	Observed Buses (%)	Linked Buses (%)	On Time (%)	Non Arrival / Not Linked (%)	Early (%)	Late (%)
05:00 - 07:00	13,607.	13,329.	98.0	99.1	92.5	0.9	0.1	6.4
07:00 - 10:00	37,248.	36,064.	96.8	93.6	72.1	7.7	1.0	19.2
10:00 - 13:00	36,902.	36,417.	98.7	98.2	86.4	1.9	0.5	11.2
13:00 - 16:00	36,680.	36,449.	99.4	97.5	80.0	2.6	0.7	16.7
16:00 - 19:00	37,984.	36,874.	97.1	92.7	69.7	7.8	1.6	20.9
19:00 - 22:00	33,571.	32,852.	97.9	97.6	82.8	2.7	0.7	13.8
22:00 - 24:00	17,268.	17,701.	102.5	99.2	90.7	1.0	0.4	7.9
All Locations Summary	213,260	209,686	98.3	96.3	78.4	4.5	0.9	16.2

Transport for London - QSI Points and Live Mileage List

Route 313
 Service change 22025 - non-school
 Date 26 October 2009

TRANCHE 538

QSI Points are highlighted.

OUT DIRECTION				
Timing Point Code	Stop Number	Stop Name	Metres	Miles
CHFDSNDS	CHFDSNDS	Chingford Bus Station, Stand D		
CHFDSND	34018	Chingford Station	0	0.00
	1135	Station Road / Chingford Station	104	0.06
	15985	Stanley Road	276	0.17
	26995	Station Road / The Green	239	0.15
	19970	Chingford Police Station	327	0.20
	19972	Pole Hill Road	276	0.17
	19974	Hawksmouth	283	0.18
CHFDSR	19976	Sewardstone Road	367	0.23
	20253	King George Sailing Club	339	0.21
	20251	Wharf Road	947	0.59
	33174	Ponders End Station	608	0.38
	20243	Alexandra Road	354	0.22
	20242	Ponders End High Street	480	0.30
PONDTS	13525	Glyn Road	199	0.12
E GR	13523	Enfield Bus Garage / Southbury Station	151	0.09
	14817	Crown Road	348	0.22
	4541	Baird Road	188	0.12
	3491	Great Cambridge Road	282	0.18
	15871	Percival Road	254	0.16
	4005	Cecil Avenue	307	0.19
	15873	Ladysmith Road	389	0.24
	20414	Enfield Town Station	244	0.15
ENTNCR	BP4975	Enfield Town / Cecil Road	409	0.25
	16800	Enfield Chase Station	857	0.53
	30877	Slades Hill	574	0.36
	5974	Culloden Road	290	0.18
	5976	Drapers Road	404	0.25
	70336	Harefield Close	755	0.47
CSFMHP	70337	Chase Farm Hospital	223	0.14
	18884	Hadley Road	246	0.15
	5978	Roundhedge Way	271	0.17
BTBYRH	5980	Botany Bay / The Robin Hood	1497	0.93
	22191	Holly Cottage	483	0.30
	5982	Windrush	567	0.35
	5984	St John's Senior School	651	0.40
	5986	New Cottage Farm	927	0.58
	OC01	Park Avenue	1339	0.83
POTBLN	OC02	Potters Bar Lion	309	0.19
	OC03	Potters Bar Tesco	391	0.24
	OC04	Darkes Lane	797	0.50
POTBSN	OC05	Potters Bar Station	403	0.25
POTBSN S	POTTERS BAR STATION		0	0.00
TOTAL ROUTE MILEAGE - OUT DIRECTION			18355	11.41
			metres	miles

BACK DIRECTION				
Timing Point Code	Stop Number	Stop Name	Metres	Miles
POTBSN S	POTBSN S	POTTERS BAR STATION		
POTBSN	OC05	Potters Bar Station	0	0.00
	OC16	Potters Bar Tesco	1219	0.76
POTBLN	OC17	Potters Bar Lion	371	0.23
	OC38	Park Avenue	487	0.30
	5987	New Cottage Farm	1043	0.65
	5985	St John's Senior School	989	0.61
	5983	Windrush	688	0.43
	R0732	Holly Cottage	588	0.37
BTBYRH	5981	Botany Bay / The Robin Hood	262	0.16
	5979	Roundhedge Way	1756	1.09
CSFMHP	18883	Chase Farm Hospital	395	0.25
	5977	Drapers Road	537	0.33
	5975	Culloden Road	375	0.23
	16799	The Ridgeway	397	0.25
	16801	Enfield Chase Station	527	0.33
ENTNMP	14997	Enfield Town / Church Street	466	0.29
	3490	Enfield Town Station	305	0.19
	15872	Ladysmith Road	312	0.19
	4004	Cecil Avenue	269	0.17
	15870	Percival Road	334	0.21
	3492	Great Cambridge Road	274	0.17
	13521	Baird Road	317	0.20
	14816	Crown Road	218	0.14
PONDTS	13522	Glyn Road	472	0.29
	BP2617	Royal British Legion	451	0.28
	20244	Alexandra Road	163	0.10
	33173	Mollison Avenue / Ponders End	495	0.31
	20250	Wharf Road	580	0.36
	R0761	King George Sailing Club	933	0.58
CHFDSR	19977	Sewardstone Road	299	0.19
	19975	Hawksmouth	303	0.19
	19973	Pole Hill Road	255	0.16
	19971	Chingford Green	457	0.28
	4289	Station Road / The Green	286	0.18
	15984	Buxton Road	205	0.13
CHFDSND	34018	Chingford Station	502	0.31
CHFDSNDS	CHFDSNDS	Chingford Bus Station, Stand D	0	0.00
TOTAL ROUTE MILEAGE - BACK DIRECTION			17530	10.89
			metres	miles

Transport for London - QSI Points and Live Mileage List

Route 313
 Service change 22025 - school
 Date 26 October 2009

TRANCHE 538

QSI Points are highlighted.

OUT DIRECTION				
Timing Point Code	Stop Number	Stop Name	Metres	Miles
CHFDSNDS	CHFDSNDS	Chingford Bus Station, Stand D		
CHFDSND	34018	Chingford Station	0	0.00
	1135	Station Road / Chingford Station	104	0.06
	15985	Stanley Road	276	0.17
	26995	Station Road / The Green	239	0.15
	19970	Chingford Police Station	327	0.20
	19972	Pole Hill Road	276	0.17
	19974	Hawksmouth	283	0.18
CHFDSR	19976	Sewardstone Road	367	0.23
	20253	King George Sailing Club	339	0.21
	20251	Wharf Road	947	0.59
	33174	Ponders End Station	608	0.38
	20243	Alexandra Road	354	0.22
	20242	Ponders End High Street	480	0.30
PONDTS	13525	Glyn Road	199	0.12
E GR	13523	Enfield Bus Garage / Southbury Station	151	0.09
	14817	Crown Road	348	0.22
	4541	Baird Road	188	0.12
	3491	Great Cambridge Road	282	0.18
	15871	Percival Road	254	0.16
	4005	Cecil Avenue	307	0.19
	15873	Ladysmith Road	389	0.24
	20414	Enfield Town Station	244	0.15
ENTNCR	BP4975	Enfield Town / Cecil Road	409	0.25
	16800	Enfield Chase Station	857	0.53
	30877	Slades Hill	574	0.36
	5974	Culloden Road	290	0.18
	5976	Drapers Road	404	0.25
	70336	Harefield Close	755	0.47
CSFMHP	70337	Chase Farm Hospital	223	0.14
	18884	Hadley Road	246	0.15
	5978	Roundhedge Way	271	0.17
BTBYRH	5980	Botany Bay / The Robin Hood	1497	0.93
	22191	Holly Cottage	483	0.30
	5982	Windrush	567	0.35
	5984	St John's Senior School	651	0.40
	5986	New Cottage Farm	927	0.58
	OC01	Park Avenue	1339	0.83
POTBLN	OC02	Potters Bar Lion	309	0.19
	OC03	Potters Bar Tesco	391	0.24
	OC04	Darkes Lane	797	0.50
POTBSN	OC05	Potters Bar Station	403	0.25
	OC06	Laurel Avenue	809	0.50
	OC07	Dugdale Hill Lane	254	0.16
	OC09	Elmfield Road	484	0.30
	OC10	Santers Lane	223	0.14
POTBDA	OC11	Dame Alice Owens School	187	0.12
TOTAL ROUTE MILEAGE - OUT DIRECTION			20312 metres	12.62 miles

BACK DIRECTION				
Timing Point Code	Stop Number	Stop Name	Metres	Miles
POTBDA	OC11	Dame Alice Owens School		
	OC417	Santers Lane	1684	1.05
	OC288	Elmfield Road	322	0.20
	OC127	Dugdale Hill Lane	466	0.29
	OC33	Laurel Avenue	343	0.21
	OC34	Darkes Lane	310	0.19
POTBSN	OC05	Potters Bar Station	397	0.25
	OC16	Potters Bar Tesco	1219	0.76
POTBLN	OC17	Potters Bar Lion	371	0.23
	OC38	Park Avenue	487	0.30
	5987	New Cottage Farm	1043	0.65
	5985	St John's Senior School	989	0.61
	5983	Windrush	688	0.43
	R0732	Holly Cottage	588	0.37
BTBYRH	5981	Botany Bay / The Robin Hood	262	0.16
	5979	Roundhedge Way	1756	1.09
CSFMHP	18883	Chase Farm Hospital	395	0.25
	5977	Drapers Road	537	0.33
	5975	Culloden Road	375	0.23
	16799	The Ridgeway	397	0.25
	16801	Enfield Chase Station	527	0.33
ENTNMP	14997	Enfield Town / Church Street	466	0.29
	3490	Enfield Town Station	305	0.19
	15872	Ladysmith Road	312	0.19
	4004	Cecil Avenue	269	0.17
	15870	Percival Road	334	0.21
	3492	Great Cambridge Road	274	0.17
	13521	Baird Road	317	0.20
	14816	Crown Road	218	0.14
PONDTS	13522	Glyn Road	472	0.29
	BP2617	Royal British Legion	451	0.28
	20244	Alexandra Road	163	0.10
	33173	Mollison Avenue / Ponders End	495	0.31
	20250	Wharf Road	580	0.36
	R0761	King George Sailing Club	933	0.58
CHFDSR	19977	Sewardstone Road	299	0.19
	19975	Hawksmouth	303	0.19
	19973	Pole Hill Road	255	0.16
	19971	Chingford Green	457	0.28
	4289	Station Road / The Green	286	0.18
	15984	Buxton Road	205	0.13
CHFDSND	34018	Chingford Station	502	0.31
	CHFDSNDS	Chingford Bus Station, Stand D	0	0.00
TOTAL ROUTE MILEAGE - BACK DIRECTION			21052 metres	13.08 miles