

## 7. Service Specification

Route: 298

Contract Reference: QC55404

This Service Specification forms section 7 of the ITT and should be read in conjunction with the ITT document, Version 1 dated 29 September 2011.

You are formally invited to tender for the provision of the bus service detailed below and in accordance with this Service Specification. Tenderers must ensure that a Compliant Tender is submitted and this will only be considered for evaluation if all parts of the Tender documents, as set out in section 11, have been received by the Corporation by the Date of Tender. The Tender must be fully completed in the required format, in accordance with the Instructions to Tenderers. A Compliant Tender must comply fully with the requirements of the Framework Agreement; adhere to the requirements of the Service Specification; and reflect the price of operating the Services with new vehicles.

<b>Route Number</b>	298
<b>Terminus Points</b>	Arnos Grove Station and Potters Bar, Cranborne Road Industrial Estate/Potters Bar Station
<b>Contract Basis</b>	Incentivised
<b>Commencement Date</b>	4 <sup>th</sup> February 2017
<b>Vehicle Type</b>	60 capacity, dual door, single deck, minimum 10.8m long, subject to a satisfactory route test
<b>Current Maximum Approved Dimensions</b>	10.2 metres long and 2.44 metres wide
<b>New Vehicles Mandatory</b>	Yes
<b>Hybrid Price Required</b>	Yes
<b>Sponsored Route</b>	Yes
<b>Advertising Rights</b>	Operator
<b>Minimum Performance Standard</b>	Departing on Time - No less than 82.00%
<b>Extension Threshold</b>	Departing on Time Threshold - 85.00%
<b>Minimum Operated Mileage Standard</b>	No less than 98.00%

The Date of Tender for this ITT is: No later than 12 Noon on Monday 16<sup>th</sup> May 2016.

*Tenderers should refer to section 3 of Part A for the Service Specification Explanatory Notes and Appendix B of section 5 for the Example Service Specification of the ITT document.*

## **SERVICE SPECIFICATION**

- 1) SERVICE SPEC - ROUTE SPECIFICATION INFORMATION
- 2) NOTES
- 3) SCHEDULE REQUIREMENTS & PINCHPOINTS
- 4) OPERATIONAL CONSIDERATIONS
- 5) ROUTE RECORD, CURRENT PERFORMANCE, QSI BY TIME OF DAY, IBUS MILEAGE & QSI POINTS

## 2) NOTES

### **Proposed Changes:**

At this time, no changes are proposed to the existing service for introduction prior to the commencement of the new Route Agreement for Route No. 298.

Tenderers should note that the following alterations (subject to consultation) are proposed as part of this Service Specification for introduction with the new Route Agreement:

- 60 capacity, dual door, single deck buses of a minimum of 10.8 metres long buses will be specified, subject to a satisfactory route test.

### **Requirements for Registration:**

The section of Route No. 298 between Potters Bar, Cranborne Road Industrial Estate and the Hertfordshire County Boundary at Cockfosters Road, past M25 roundabout will need to be registered with the Office of the Traffic Commissioner East of England 56 days before the operation commences. The registration should be sent to:

Office of the Traffic Commissioner (East of England)  
Hillcrest House  
386 Harehills Lane  
Leeds  
LS9 6NF

Copies of the registration should be sent to:

Passenger Transport Unit  
Hertfordshire County Council  
PO Box 99  
County Hall  
Hertford  
SG13 8TJ

and to:

Bus and Coach Licensing Team  
Strategy and Planning  
TfL Surface Transport  
10<sup>th</sup> Floor, Zone G4  
Palestra  
197 Blackfriars Road  
London  
SE1 8NJ  
e-mail: [lsp@tfl.gov.uk](mailto:lsp@tfl.gov.uk)

The cost of this and any future variation to this registration are to be met by the Operator.

**2) NOTES - Continued**

**Operators should provide the following prices:**

- 1. Annual diesel price - based on minimum 5 year contract.**
- 2. Annual hybrid price - based on minimum 5 year contract.**
- 3. Annual hybrid price - with upfront payment of capital difference between diesel and hybrid for 5 year contract.**

**3) SCHEDULE REQUIREMENTS & PINCHPOINTS**

**3.1) MONDAY TO FRIDAY SCHEDULE REQUIREMENTS & PINCHPOINTS**

Arnos Grove Station to Potters Bar, Cranborne Industrial Estate / Potters Bar Station			Potters Bar, Cranborne Industrial Estate / Potters Bar Station to Arnos Grove Station		
First departure no later than 0605.			First departure no later than 0600.		
0600 - 1950	Every 20 minutes*		0555 - 2045	Every 20 minutes**	
1951 - 2355	Every 30 minutes		2046 - 0020	Every 30 minutes	
Last departure no earlier than 2350.			Last departure no earlier than 0015.		
<b>Pinchpoints</b>					
Cockfosters Station	0715 - 0915	20 minutes	Cockfosters Station	0730 - 0930	20 minutes
	1455 - 1635	20 minutes		1505 - 1605	20 minutes

**\*Ex Arnos Grove Station, buses departing from 1930 and until last bus, should terminate at Potters Bar Station.**

**\*\* Towards Arnos Grove Station, buses should depart Potters Bar Station from 2025 until last bus.**

**3.2) SATURDAY AND GOOD FRIDAY SCHEDULE REQUIREMENTS & PINCHPOINTS**

Arnos Grove Station to Potters Bar Station			Potters Bar Station to Arnos Grove Station		
First departure no later than 0605.			First departure no later than 0605.		
0600 - 0805	Every 30 minutes		0600 - 0835	Every 30 minutes	
0806 - 1825	Every 20 minutes		0836 - 1915	Every 20 minutes	
1826 - 2355	Every 30 minutes		1916 - 0020	Every 30 minutes	
Last departure no earlier than 2350.			Last departure no earlier than 0015.		
<b>Pinchpoints</b>					
Cockfosters Station	0920 - 1100	20 minutes	Cockfosters Station	0940 - 1100	20 minutes

**Buses should terminate at Potters Bar Station all day on Saturdays**

**3) SCHEDULE REQUIREMENTS & PINCHPOINTS - Continued**

**3.3) SUNDAY AND PUBLIC HOLIDAYS (EXCEPT GOOD FRIDAY AND CHRISTMAS DAY) SCHEDULE REQUIREMENTS & PINCHPOINTS**

Arnos Grove Station to Potters Bar Station		Potters Bar Station to Arnos Grove Station			
First departure no later than 0720.		First departure no later than 0755.			
0715 - 2355	Every 30 minutes	0750 - 0020	Every 30 minutes		
Last departure no earlier than 2350.		Last departure no earlier than 0015.			
<b>Pinchpoints</b>					
Cockfosters Station	1010 - 1140	30 minutes	Cockfosters Station	1020 - 1120	30 minutes

**Buses should terminate at Potters Bar Station all day on Sundays.**

**Tenderers must identify the cost of the Boxing Day element of this service separately.**

**4) OPERATIONAL CONSIDERATIONS**

- 4.1) Route No. 298 can suffer from unpredictable traffic delays in the Southgate Station and M25 Junction 424 areas.
- 4.2) Growth is expected around the Bounds Green, Southgate and Arnos Grove areas over the next five years, particularly with the redevelopment of the Ladderswood estate.

**5) ROUTE RECORD, CURRENT PERFORMANCE, QSI BY TIME OF DAY, IBUS MILEAGE & QSI POINTS**

- 5.1) ROUTE RECORD  
As per Busnet printout.
- 5.2) CURRENT PERFORMANCE  
As per current print out.
- 5.3) QSI BY TIME OF DAY  
As per current print out.
- 5.4) IBUS MILEAGE & QSI POINTS  
As per current print out.

## LONDON BUSES - ROUTE DESCRIPTION

### **ROUTE 298: Arnos Grove Station - Potters Bar, Cranborne Road Industrial Estate**

**Date of Structural Change:** 4 February 2017.

**Date of Service Change:** 4 February 2017.

**Reason for Issue:** New Tender.

#### **STREETS TRAVERSED**

**Towards Potters Bar, Cranborne Road Industrial Estate:** Bowes Road, Betstyle Circus, Waterfall Road, The Green, Southgate High Street, Station Parade, Chase Side, Cockfosters Road, Stagg Hill, M25 Junction 24 Roundabout, Southgate Road, Mutton Lane, Darkes Lane, Potters Bar Station Forecourt, Darkes Lane, Mutton Lane, Cranborne Road, Cranborne Avenue, Cranborne Road.

**Towards Arnos Grove Station:** Cranborne Road, Mutton Lane, Darkes Lane, Potters Bar Station Forecourt, Darkes Lane, Mutton Lane, Southgate Road, M25 Junction 24 Roundabout, Stagg Hill, Cockfosters Road, Chase Side, Station Parade, Southgate High Street, The Green, Waterfall Road, Betstyle Circus, Bowes Road, Arnos Grove Station Forecourt.

## **AUTHORISED STANDS, CURTAILMENT POINTS, & BLIND DESCRIPTIONS**

Please note that only stands, curtailment points, & blind descriptions as detailed in this contractual document may be used.

### **ARNOS GROVE STATION**

Private offside stand for 3 buses on Arnos Grove Station forecourt on north side of Bowes Road commencing 22 metres west of lamp standard No. 16 and extending 31.5 metres west.

Buses proceed from Arnos Grove Station Forecourt direct to stand, departing via Arnos Grove Station Forecourt to Bowes Road. Set down in Arnos Grove Station Forecourt, at Stop U (36805 - Arnos Grove Station <>, Last Stop on LOR: 36805 - Arnos Grove Station <>) and pick up in Bowes Road, at Stop B (BP5100 - Arnos Grove Station <>, First Stop on LOR: BP5100 - Arnos Grove Station <>).

AVAILABILITY:	At any time.
OPERATING RESTRICTIONS:	No more than 1 bus on Route 298 should be scheduled to stand at any one time.
MEAL RELIEFS:	No meal relief vehicles to stand at any time.
FERRY VEHICLES:	No ferry vehicles to park on stand at any time.
BLIND DISPLAY:	Arnos Grove.
OTHER INFORMATION:	LUL toilet facilities available 0600-0100 on Mondays-Saturdays; 0700-0100 on Sundays.

### **SOUTHGATE STATION (from POTTERS BAR, CRANBORNE ROAD INDUSTRIAL ESTATE)**

Buses proceed from Chase Side via Southgate Circus departing to Station Parade. Set down in Station Parade, at Stop F (995 - Southgate Station <>, Last Stop on LOR: 27769 - Southgate Police Station) and pick up in Station Parade, at Stop G (994 - Southgate Station <>, First Stop on LOR: 994 - Southgate Station <>).

AVAILABILITY:	At any time.
OPERATING RESTRICTIONS:	<b>Turning Point Only - Buses must not stand</b>
BLIND DISPLAY:	Southgate.

### **COCKFOSTERS STATION (from Arnos Grove Station)**

Private stand for up to 3 buses in lay-by on west side of Cockfosters Road outside Cockfosters Station.

Buses proceed from Cockfosters Road via Cockfosters Station Lay-By to stand, departing via Cockfosters Station Lay-By to Cockfosters Road. Set down in Cockfosters Station Lay-by, at Alighting Point (BP1317 - Cockfosters Station <>, Last Stop on LOR: 17764 - Freston Gardens) and pick up in Cockfosters Road, at Stop B (17763 - Cockfosters Station <>, First Stop on LOR: 17763 - Cockfosters Station <>).

AVAILABILITY: At any time.  
OPERATING RESTRICTIONS: Unscheduled curtailments only.  
MEAL RELIEFS: No meal relief vehicles to stand at any time.  
FERRY VEHICLES: No ferry vehicles to park on stand at any time.  
BLIND DISPLAY: Cockfosters.

### **POTTERS BAR STATION, NORTH SIDE (from Arnos Grove Station)**

Private stand for one bus at Stop C on north side of forecourt of Potters Bar Station, adjacent to Sainsbury's store.

Buses proceed from Potters Bar Station Forecourt direct to stand, departing to Potters Bar Station Forecourt. Set down in Potters Bar Station Forecourt, on stand at Stop C (OC35 - Potters Bar Station #, Last Stop on LOR: OC35 - Potters Bar Station #) and pick up in Potters Bar Station Forecourt, on stand at Stop C (OC35 - Potters Bar Station #, First Stop on LOR: OC35 - Potters Bar Station #).

AVAILABILITY: At any time.  
OPERATING RESTRICTIONS: Unscheduled curtailments only.  
MEAL RELIEFS: No meal relief vehicles to stand at any time.  
FERRY VEHICLES: No ferry vehicles to park on stand at any time.  
BLIND DISPLAY: Potters Bar Station.

### **POTTERS BAR, CRANBORNE ROAD INDUSTRIAL ESTATE**

Private stand for two buses in bay on east side of Cranborne Road (east arm).

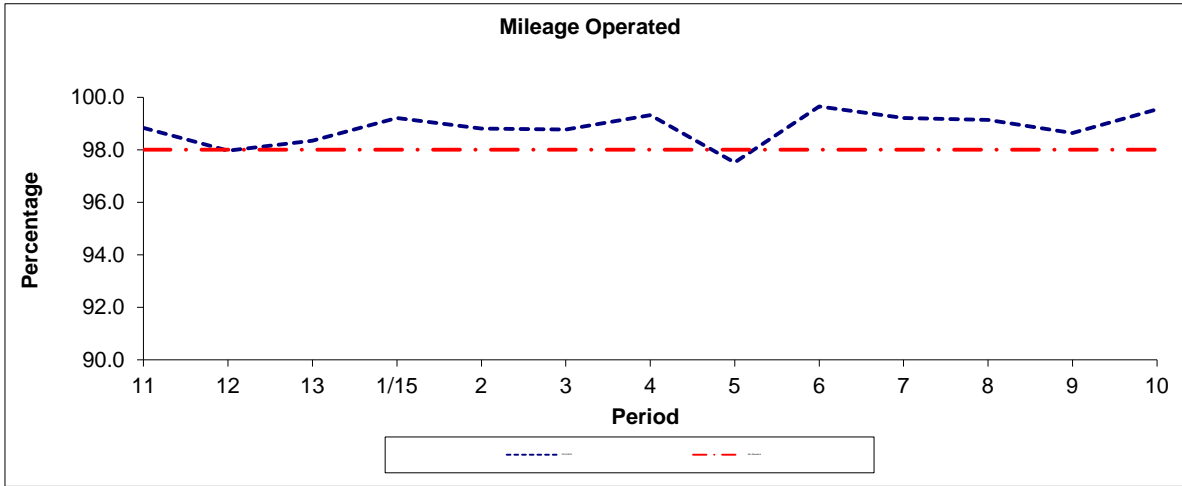
Buses proceed from Cranborne Road direct to stand, departing to Cranborne Road. Set down in Cranborne Road (OC30 - Cranborne Road Industrial Estate, Last Stop on LOR: OC30 - Cranborne Road Industrial Estate) and pick up in Cranborne Road (OC30 - Cranborne Road Industrial Estate, First Stop on LOR: OC30 - Cranborne Road Industrial Estate).

AVAILABILITY: At any time.  
OPERATING RESTRICTIONS: No more than 1 bus on Route 298 should be scheduled to stand at any one time.  
MEAL RELIEFS: No meal relief vehicles to stand at any time.  
FERRY VEHICLES: No ferry vehicles to park on stand at any time.  
BLIND DISPLAY: Potters Bar, Cranborne Road.  
OTHER INFORMATION: No toilet facilities currently available.

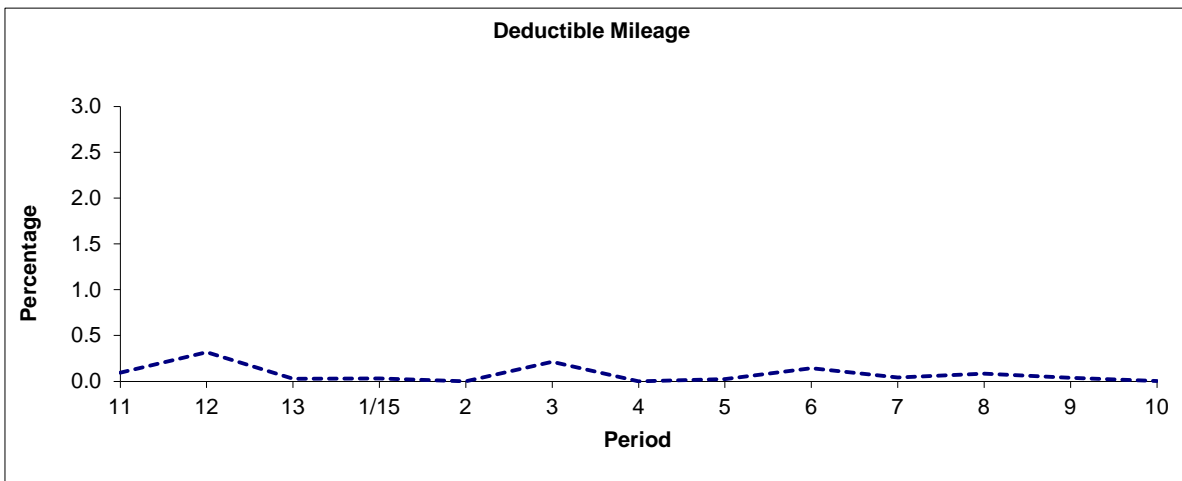


**PART B - PERFORMANCE STATISTICS**

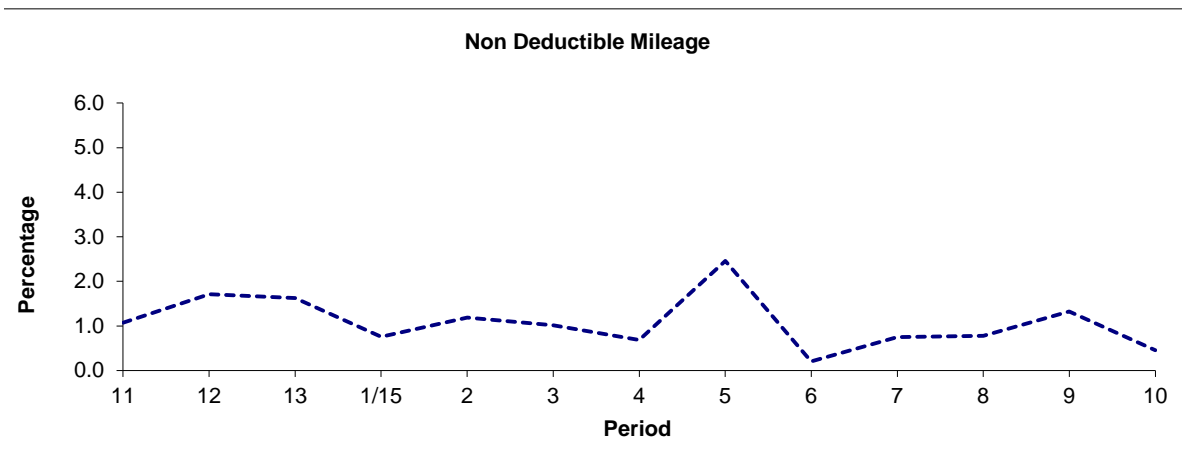
**Route 298**



Period	11	12	13	1/15	2	3	4	5	6	7	8	9	10
2014/2015	98.83	97.97	98.35	99.21	98.81	98.77	99.32	97.52	99.65	99.21	99.14	98.64	99.54
Min Standard	98.00	98.00	98.00	98.00	98.00	98.00	98.00	98.00	98.00	98.00	98.00	98.00	98.00



Period	11	12	13	1/15	2	3	4	5	6	7	8	9	10
2014/2015	0.09	0.32	0.03	0.03	0.00	0.21	0.00	0.03	0.14	0.04	0.09	0.04	0.00

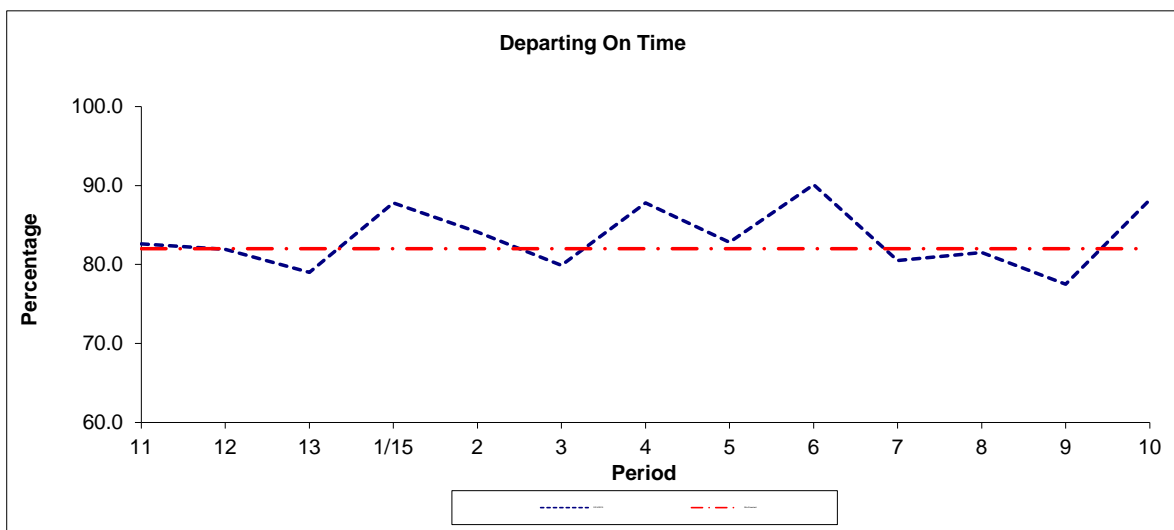


Period	11	12	13	1/15	2	3	4	5	6	7	8	9	10
2014/2015	1.07	1.71	1.63	0.76	1.19	1.01	0.68	2.46	0.20	0.75	0.78	1.32	0.45

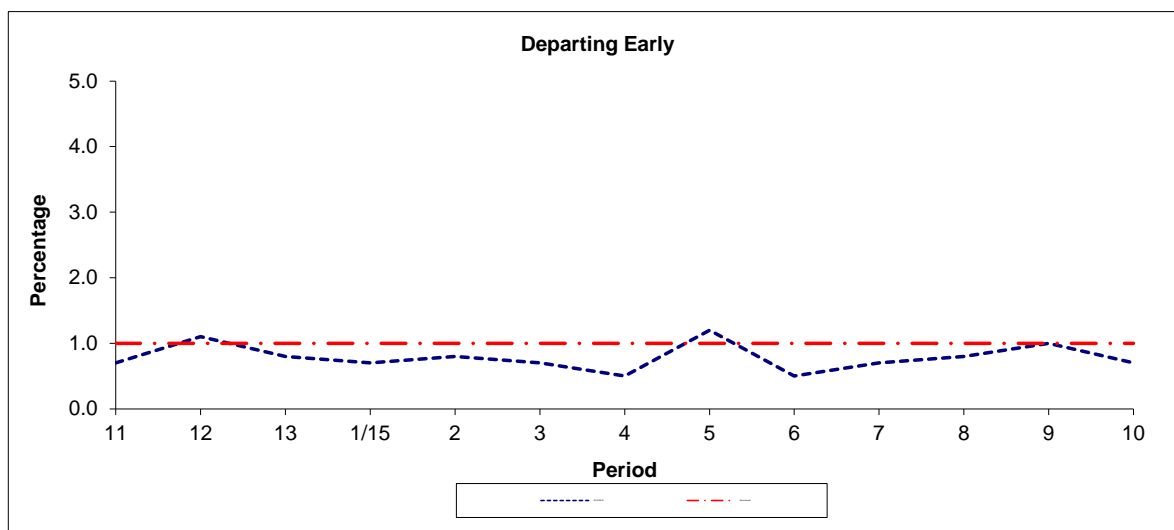
**Note :** Mileage is based on 4 weeks data

**PART B - PERFORMANCE STATISTICS**

**Route 298**



Period	11	12	13	1/15	2	3	4	5	6	7	8	9	10
2014/2015	82.6	81.9	79.0	87.8	84.1	79.9	87.8	82.8	90.1	80.5	81.5	77.5	88.2
Min Standard	82.0	82.0	82.0	82.0	82.0	82.0	82.0	82.0	82.0	82.0	82.0	82.0	82.0



Period	11	12	13	1/15	2	3	4	5	6	7	8	9	10
2014/2015	0.7	1.1	0.8	0.7	0.8	0.7	0.5	1.2	0.5	0.7	0.8	1.0	0.7
Benchmark	1.0	1.0	1.0	1.0	1.0	1.0	1.0	1.0	1.0	1.0	1.0	1.0	1.0

**Note :** Reliability is actual performance under full iBus (4 weeks data).  
 Minimum Standards and Benchmarks are those applicable under the new contract.

**ROUTE 298 - FULL iBUS RESULTS BY TIME OF DAY  
 QUARTER 4 14/15 TO QUARTER 3 15/16 (03/01/15 - 08/01/16)**

**MONDAY - FRIDAY**

Time Range	Expected Buses	Observed Buses	Observed Buses (%)	Linked Buses (%)	On Time (%)	Non Arrival / Not Linked (%)	Early (%)	Late (%)
05:00 - 07:00	6,891.	6,837.	99.2	99.3	97.1	0.7	0.3	1.8
07:00 - 10:00	22,682.	22,140.	97.6	94.8	72.5	5.9	1.1	20.5
10:00 - 13:00	22,305.	22,264.	99.8	98.5	92.0	1.5	0.7	5.7
13:00 - 16:00	21,915.	21,807.	99.5	98.9	91.0	1.2	0.5	7.3
16:00 - 19:00	21,587.	21,192.	98.2	92.9	64.4	7.5	1.7	26.5
19:00 - 22:00	17,031.	17,060.	100.2	97.8	91.2	2.3	0.5	6.0
22:00 - 24:00	7,705.	7,694.	99.9	98.4	96.9	1.8	0.1	1.2
<b>All Locations</b>	<b>120,116.</b>	<b>118,994.</b>	<b>99.1</b>	<b>96.8</b>	<b>81.4</b>	<b>3.9</b>	<b>0.9</b>	<b>13.8</b>

**SATURDAY**

Time Range	Expected Buses	Observed Buses	Observed Buses (%)	Linked Buses (%)	On Time (%)	Non Arrival / Not Linked (%)	Early (%)	Late (%)
05:00 - 07:00	765.	764.	99.9	99.5	99.1	0.5	0.0	0.4
07:00 - 10:00	3,143.	3,131.	99.6	99.8	97.1	0.2	0.4	2.4
10:00 - 13:00	3,713.	3,630.	97.8	98.9	83.7	1.4	0.3	14.6
13:00 - 16:00	3,678.	3,705.	100.7	96.7	74.0	3.6	0.5	21.8
16:00 - 19:00	3,706.	3,682.	99.4	99.0	91.9	1.1	0.1	7.0
19:00 - 22:00	2,514.	2,515.	100.0	99.4	92.5	0.7	0.0	6.8
22:00 - 24:00	1,653.	1,662.	100.5	98.5	97.1	1.5	0.0	1.4
<b>All Locations</b>	<b>19,172.</b>	<b>19,089.</b>	<b>99.6</b>	<b>98.7</b>	<b>86.8</b>	<b>1.6</b>	<b>0.3</b>	<b>11.3</b>

**SUNDAY AND BANK HOLIDAYS**

Time Range	Expected Buses	Observed Buses	Observed Buses (%)	Linked Buses (%)	On Time (%)	Non Arrival / Not Linked (%)	Early (%)	Late (%)
05:00 - 07:00	15.	15.	100.0	100.0	100.0	0.0	0.0	0.0
07:00 - 10:00	2,234.	2,225.	99.6	99.3	96.4	1.1	0.4	2.1
10:00 - 13:00	2,948.	2,903.	98.5	98.9	90.5	1.3	0.4	7.8
13:00 - 16:00	2,841.	2,865.	100.8	99.5	87.4	0.6	0.5	11.6
16:00 - 19:00	2,912.	2,916.	100.1	99.7	97.0	0.3	0.4	2.4
19:00 - 22:00	2,822.	2,829.	100.2	98.9	96.9	1.2	0.0	2.0
22:00 - 24:00	1,864.	1,873.	100.5	98.9	98.5	1.0	0.5	0.1
<b>All Locations</b>	<b>15,636.</b>	<b>15,626.</b>	<b>99.9</b>	<b>99.2</b>	<b>93.1</b>	<b>0.8</b>	<b>0.4</b>	<b>5.7</b>

**ALL DAYS**

Time Range	Expected Buses	Observed Buses	Observed Buses (%)	Linked Buses (%)	On Time (%)	Non Arrival / Not Linked (%)	Early (%)	Late (%)
05:00 - 07:00	7,671.	7,616.	99.3	99.3	97.3	0.7	0.3	1.7
07:00 - 10:00	28,059.	27,496.	98.0	95.7	75.7	5.2	1.0	18.1
10:00 - 13:00	28,966.	28,797.	99.4	98.6	90.5	1.5	0.6	7.4
13:00 - 16:00	28,434.	28,377.	99.8	98.7	88.2	1.5	0.5	9.9
16:00 - 19:00	28,205.	27,790.	98.5	94.4	70.8	6.0	1.4	21.8
19:00 - 22:00	22,367.	22,404.	100.2	98.1	92.0	1.9	0.4	5.6
22:00 - 24:00	11,222.	11,229.	100.1	98.5	97.1	1.6	0.1	1.1
<b>All Locations</b>	<b>154,924.</b>	<b>153,709.</b>	<b>99.2</b>	<b>97.3</b>	<b>83.2</b>	<b>3.3</b>	<b>0.8</b>	<b>12.7</b>

**Transport for London - QSI Points and Live Mileage List**

Route 298 Weekday daytime  
 Service change 26215  
 Date 4th February 2012

**TRANCHE 554**

QSI Points are highlighted

OUT DIRECTION				
Timing Point Code	Stop Number	Stop Name	Metres	Miles
ARGVSN	BP5100	Amos Grove Station	0	0.00
	BP4848	Ravenscraig Road	155	0.10
	15423	Betsyle Circus	247	0.15
	29699	Betsyle Road	400	0.25
	29701	Brookdale	242	0.15
	17779	Ye Olde Cherry Tree	1344	0.84
	17777	Meadway	242	0.15
	17775	Southgate College	405	0.25
SGATSN	994	Southgate Station	230	0.14
	17772	Southgate Police Station	281	0.17
	19262	Osidge J imi School	170	0.11
	17770	Avenue Road	374	0.23
	19264	Monkfrith Way	287	0.18
	17768	Cat Hill Campus	444	0.28
	17767	Bramley Road	381	0.24
	17764	Freston Gardens	445	0.28
CKFRSN	17762	Cockfosters Station	418	0.26
	R0419	Trent Country Park	482	0.30
	19279	Coombehurst Close	456	0.28
	16916	Green Oak Place	299	0.19
	16920	Beech Hill	597	0.37
	16921	Waggon Road	558	0.35
	16923	Slopers Pond Farm	277	0.17
	OC20	Stagg Hill	1296	0.81
POTBLN	OC01	Park Avenue	613	0.38
	OC02	Potters Bar Lion	309	0.19
	OC03	Potters Bar Tesco	391	0.24
	OC04	Darkes Lane	797	0.50
POTBSN	OC35	Potters Bar Station	412	0.26
	OC06	Laurel Avenue	798	0.50
	OC27	Cranborne Road Triangle	446	0.28
	OC31	Cranborne Road	633	0.39
POTBCR	OC30	Cranborne Road Industrial Estate	541	0.34
<b>TOTAL ROUTE MILEAGE - OUT DIRECTION</b>			14971	9.30
			metres	miles

BACK DIRECTION				
Timing Point Code	Stop Number	Stop Name	Metres	Miles
POTBCR	OC30	anborne Road Industrial Est	0	0.00
	OC28	Cranborne Road	167	0.10
	OC32	Cranbourne Road	560	0.35
	OC33	Laurel Avenue	563	0.35
	OC34	Darkes Lane	310	0.19
POTBSN	OC35	Potters Bar Station	406	0.25
	OC16	Potters Bar Tesco	1208	0.75
POTBLN	OC17	Potters Bar Lion	371	0.23
	OC38	Park Avenue	487	0.30
	OC39	Stagg Hill	544	0.34
	16924	Slopers Pond Farm	1138	0.71
	16922	Waggon Road	500	0.31
	16919	Beech Hill	384	0.24
	16917	Green Oak Place	737	0.46
	19278	Coombehurst Close	315	0.20
	16915	Trent Country Park	510	0.32
CKFRSN	17763	Cockfosters Station	367	0.23
	17765	Freston Gardens	506	0.31
	17766	Bramley Road	356	0.22
	17769	Cat Hill Campus	455	0.28
	19263	Monkfrith Way	229	0.14
	17771	Avenue Road	424	0.26
	19261	Southgate Asda	267	0.17
	27769	Southgate Police Station	337	0.21
SGATSN	35836	Southgate Station	262	0.16
	17776	Southgate College	325	0.20
	17778	Meadway	422	0.26
	29703	Morton Way	1279	0.79
	29702	Brookdale	210	0.13
	29700	Betsyle Circus	246	0.15
	BP113	Betsyle Road	359	0.22
ARGVSN	36805	Amos Grove Station	306	0.19
<b>TOTAL ROUTE MILEAGE - BACK DIRECTION</b>			14550	9.04
			metres	miles

## Transport for London - QSI Points and Live Mileage List

Route 298 Evenings and Weekends

Service change 26215

Date 4th February 2012

**TRANCHE 554**

QSI Points are highlighted

OUT DIRECTION				
Timing Point Code	Stop Number	Stop Name	Metres	Miles
ARGVSN	BP5100	Arnos Grove Station	0	0.00
	BP4848	Ravenscraig Road	155	0.10
	15423	Betstyle Circus	247	0.15
	29699	Betstyle Road	400	0.25
	29701	Brookdale	242	0.15
	17779	Ye Olde Cherry Tree	1344	0.84
	17777	Meadway	242	0.15
	17775	Southgate College	405	0.25
SGATSN	994	Southgate Station	230	0.14
	17772	Southgate Police Station	281	0.17
	19262	Osidge Jimi School	170	0.11
	17770	Avenue Road	374	0.23
	19264	Monkfrith Way	287	0.18
	17768	Cat Hill Campus	444	0.28
	17767	Bramley Road	381	0.24
	17764	Freston Gardens	445	0.28
CKFRSN	17762	Cockfosters Station	418	0.26
	R0419	Trent Country Park	482	0.30
	19279	Coombehurst Close	456	0.28
	16916	Green Oak Place	299	0.19
	16920	Beech Hill	597	0.37
	16921	Waggon Road	558	0.35
	16923	Slopers Pond Farm	277	0.17
	OC20	Stagg Hill	1296	0.81
POTBLN	OC01	Park Avenue	613	0.38
	OC02	Potters Bar Lion	309	0.19
	OC03	Potters Bar Tesco	391	0.24
	OC04	Darkes Lane	797	0.50
POTBSN	OC35	Potters Bar Station	412	0.26
<b>TOTAL ROUTE MILEAGE - OUT DIRECTION</b>			12552 metres	7.80 miles

BACK DIRECTION				
Timing Point Code	Stop Number	Stop Name	Metres	Miles
POTBSN	OC35	Potters Bar Station	0	0.00
	OC16	Potters Bar Tesco	1208	0.75
POTBLN	OC17	Potters Bar Lion	371	0.23
	OC38	Park Avenue	487	0.30
	OC39	Stagg Hill	544	0.34
	16924	Slopers Pond Farm	1138	0.71
	16922	Waggon Road	500	0.31
	16919	Beech Hill	384	0.24
	16917	Green Oak Place	737	0.46
	19278	Coombehurst Close	315	0.20
	16915	Trent Country Park	510	0.32
CKFRSN	17763	Cockfosters Station	367	0.23
	17765	Freston Gardens	506	0.31
	17766	Bramley Road	356	0.22
	17769	Cat Hill Campus	455	0.28
	19263	Monkfrith Way	229	0.14
	17771	Avenue Road	424	0.26
	19261	Southgate Asda	267	0.17
	27769	Southgate Police Station	337	0.21
SGATSN	35836	Southgate Station	262	0.16
	17776	Southgate College	325	0.20
	17778	Meadway	422	0.26
	29703	Morton Way	1279	0.79
	29702	Brookdale	210	0.13
	29700	Betstyle Circus	246	0.15
	BP113	Betstyle Road	359	0.22
ARGVSN	36805	Arnos Grove Station	306	0.19
<b>TOTAL ROUTE MILEAGE - BACK DIRECTION</b>			12544 metres	7.79 miles