

7. Service Specification

Route: 295 & N295

Contract Reference: QC49703

This Service Specification forms section 7 of the ITT and should be read in conjunction with the ITT document, Version 1 dated 29 September 2011.

You are formally invited to tender for the provision of the bus service detailed below and in accordance with this Service Specification. Tenderers must ensure that a Compliant Tender is submitted and this will only be considered for evaluation if all parts of the Tender documents, as set out in section 11, have been received by the Corporation by the Date of Tender. The Tender must be fully completed in the required format, in accordance with the Instructions to Tenderers. A Compliant Tender must comply fully with the requirements of the Framework Agreement; adhere to the requirements of the Service Specification; and reflect the price of operating the Services with new vehicles.

Terminus Points	Ladbroke Grove, Sainsbury's and Clapham Junction
Contract Basis	Incentivised
Commencement Date	31 st October 2015
Vehicle Type	87 capacity, dual door, double deck buses
Current Maximum Approved Dimensions	10.4 metres long and 2.55 metres wide
New Vehicles Mandatory	Yes
Hybrid Price Required	Yes
Sponsored Route	No
Advertising Rights	Operator
Minimum Performance Standard - Route No. 295	Average Excess Wait Time - No more than 1.40 minutes
Extension Threshold - Route No. 295	Average Excess Wait Time Threshold - 1.20 minutes
Minimum Operated Mileage Standard - Route No. 295	No less than 98.00%
Departing On Time - Route No. N295	Departing on Time - No less than 86.00%
Minimum Operated Mileage Standard - Route No. N295	No less than 99.00%

The Date of Tender for this ITT is:

No later than 12 Noon on Monday 1st December 2014

Tenderers should refer to section 3 of Part A for the Service Specification Explanatory Notes and Appendix B of section 5 for the Example Service Specification of the ITT document.

SERVICE SPECIFICATION

- 1) SERVICE SPEC - ROUTE SPECIFICATION INFORMATION
- 2) NOTES
- 3) SCHEDULE REQUIREMENTS & PINCHPOINTS
- 4) OPERATIONAL CONSIDERATIONS
- 5) ROUTE RECORD, CURRENT PERFORMANCE, QSI BY TIME OF DAY, IBUS MILEAGE & QSI POINTS

2) NOTES

Proposed Changes:

At this time, no changes are proposed to the existing service for introduction prior to the commencement of the new Route Agreement for Route No. 295 & N295.

Tenderers should note that there are no changes proposed as part of this Service Specification for Route No. 295 & N295.

- The designation Route No. N295 is used for contractual purposes only. This service will be marketed as Route No. 295. This includes all publicity, including destination blind displays.
- **Tenderers must identify the cost of the Nightly element of this service separately.**

Tenderers should note that if they are supplying an alternative price based on using existing vehicles, these must be refurbished in line with the revised specification dated 1st March 2014. This applies to all contracts awarded from Tranche 471 onwards.

Operators should provide the following prices:

1. Annual diesel price - based on minimum 5 year contract.
2. Annual hybrid price - based on minimum 5 year contract.
3. Annual hybrid price - with upfront payment of capital difference between diesel and hybrid for 5 year contract.

Cash Free Boarding was extended throughout London from 6th July 2014. Submitted tender prices should fully reflect the cost saving accrued from this change. Tenderers should also indicate the approximate additional cost if cash fares were still to be accepted.

Full iBus Monitoring was introduced on all night routes with effect from 1 April 2014.

Tenderers are therefore advised that on contracts where there is a night service both the day and night elements will be incentivised from the commencement of the Route Agreement in accordance with clause 46 of Annex B Terms and Conditions, using the Minimum Performance Standard(s) specified in Part 1 of the ITT.

3) SCHEDULE REQUIREMENTS & PINCHPOINTS

3.1) MONDAY TO FRIDAY SCHEDULE REQUIREMENTS & PINCHPOINTS

Ladbroke Grove, Sainsbury's to Clapham Junction Station, Falcon Road		Clapham Junction, Meyrick Arms to Ladbroke Grove, Sainsbury's			
First departure no later than 0525.		First departure no later than 0530.			
0520 - 0600	Every 12 minutes	0525 - 0555	Every 12 minutes		
0601 - 0630	Every 10 minutes	0556 - 0615	Every 10 minutes		
0631 - 2010	Every 8 minutes	0616 - 2000	Every 8 minutes		
2011 - 2040	Every 10 minutes	2001 - 2100	Every 10 minutes		
2041 - 0005	Every 12 minutes	2101 - 0005	Every 12 minutes		
Last departure no earlier than 2400.		Last departure no earlier than 2400.			
Pinchpoints					
Fulham Broadway Station	0705 - 0905	8 minutes	Latimer Road Station	0720 - 0910	8 minutes
	1530 - 1700	8 minutes		1530 - 1710	8 minutes

3.2) SATURDAY AND GOOD FRIDAY SCHEDULE REQUIREMENTS & PINCHPOINTS

Ladbroke Grove, Sainsbury's to Clapham Junction Station, Falcon Road		Clapham Junction, Meyrick Arms to Ladbroke Grove, Sainsbury's			
First departure no later than 0525.		First departure no later than 0530.			
0520 - 0655	Every 15 minutes	0525 - 0700	Every 15 minutes		
0656 - 0805	Every 10 minutes	0701 - 0800	Every 10 minutes		
0806 - 1850	Every 8 minutes	0801 - 1840	Every 8 minutes		
1851 - 1940	Every 10 minutes	1841 - 1950	Every 10 minutes		
1941 - 0005	Every 12 minutes	1951 - 0005	Every 12 minutes		
Last departure no earlier than 2400.		Last departure no earlier than 2400.			
Pinchpoints					
Fulham Broadway Station	0930 - 1200	8 minutes	Latimer Road Station	0930 - 1200	8 minutes

3.3) SUNDAY AND PUBLIC HOLIDAYS (EXCEPT GOOD FRIDAY AND CHRISTMAS DAY) SCHEDULE REQUIREMENTS & PINCHPOINTS

Ladbroke Grove, Sainsbury's to Clapham Junction Station, Falcon Road		Clapham Junction, Meyrick Arms to Ladbroke Grove, Sainsbury's			
First departure no later than 0525.		First departure no later than 0530.			
0520 - 0655	Every 15 minutes	0525 - 0700	Every 15 minutes		
0656 - 0005	Every 12 minutes	0701 - 0005	Every 12 minutes		
Last departure no earlier than 2400.		Last departure no earlier than 2400.			
Pinchpoints					
Fulham Broadway Station	1030 - 1200	12 minutes	Latimer Road Station	1030 - 1200	12 minutes

Tenderers must identify the cost of the Boxing Day element of this service separately.

3) SCHEDULE REQUIREMENTS & PINCHPOINTS - continued

3.4) NIGHTLY

Ladbroke Grove, Sainsbury's to Clapham Junction Station, Falcon Road	Clapham Junction, Meyrick Arms to Ladbroke Grove, Sainsbury's
First departure no later than 0030.	First departure no later than 0030.
0025 - 0505 Every 30 minutes	0025 - 0505 Every 30 minutes
Last departure no earlier than 0500.	Last departure no earlier than 0500.

Tenderers must identify the cost of the Nightly element of this service separately.

4) OPERATIONAL CONSIDERATIONS

4.1) Route No. 295 should interwork with Route No. N295 to form a seamless 24 hour service.

4.2) Route No. 295 should be interworked with Route No. 211 between Hammersmith Bus Station and Fulham Broadway Station during the Mondays to Fridays AM and PM interpeak and PM peak and Saturday and Sunday shopping periods.

4.3) Route No. 295 should be best separated from Route No. 220 between Shepherd's Bush Green at Shepherd's Bush Common and Fulham Palace Road at Lillie Road where possible.

4.4) Route No. 295 can suffer from unpredictable traffic delays in the Hammersmith and Wandsworth Bridge areas.

4.5) Football matches at Queens Park Rangers Football Club can also cause traffic congestion in the Shepherd's Bush area.

4.6) The Notting Hill Carnival is an annual event held in the Notting Hill area over the late Summer Bank Holiday period and affects several LBSL contracted bus services. The arrangements for serving the area are flexible and depend on what advance information is provided by bodies such as the Metropolitan Police. Prior to the event, London Buses Officials will discuss service provision with those Operators who are involved.

4.7) Proposals exist to alter the Wandsworth Gyratory. Any such changes would improve options for improving the link between the Trinity Road area of Wandsworth and Fulham and Chelsea. Investigations are ongoing and the successful Tenderer will be updated;

4.8) The proposed night tube project may impact on the night bus network. A review is currently being undertaken and the successful Tenderer will be kept up to date about the potential implications of the night tube project on this route.

**5) ROUTE RECORD, CURRENT PERFORMANCE, QSI BY TIME OF DAY,
IBUS MILEAGE & QSI POINTS**

5.1) ROUTE RECORD

As per Busnet printout.

5.2) CURRENT PERFORMANCE

As per current print out.

5.3) QSI BY TIME OF DAY

As per current print out.

5.4) IBUS MILEAGE & QSI POINTS

As per current print out.

LONDON BUSES - ROUTE DESCRIPTION

ROUTE 295: Ladbroke Grove, Sainsburys - Clapham Junction, Grant Road (24 hour service)

Date of Structural Change: 31 October 2015.

Date of Service Change: 31 October 2015.

Reason for Issue: New Contract.

STREETS TRAVERSED

Towards Clapham Junction, Grant Road: Canal Way, Ladbroke Grove, Cambridge Gardens, Bramley Road, St Ann's Road, St Ann's Villas, Royal Crescent, Holland Park Avenue, Holland Park Roundabout, Uxbridge Road, Shepherd's Bush Green (South Side), Shepherd's Bush Road, Hammersmith Bus Station Northern Entrance Ramp, Hammersmith Bus Station High Level, Fulham Palace Road, Lillie Road, Munster Road, Dawes Road, North End Road, Fulham Road, Fulham Broadway, Harwood Road, New Kings Road, Wandsworth Bridge Road, Wandsworth Bridge, Bridgend Road, Wandsworth Bridge Roundabout, York Road, Plough Road, St John's Hill, Falcon Road.

Towards Ladbroke Grove, Sainsburys: Falcon Road, St John's Hill, Plough Road, York Road, Wandsworth Bridge Roundabout, Bridgend Road, Wandsworth Bridge, Wandsworth Bridge Road, New Kings Road, Harwood Road, Fulham Broadway, Fulham Road, North End Road, Dawes Road, Munster Road, Lillie Road, Fulham Palace Road, Hammersmith Bus Station High Level, Talgarth Road, Queen Caroline Street, Hammersmith Broadway, Shepherd's Bush Road, Shepherd's Bush Green (West Side), Uxbridge Road, Holland Park Roundabout, Holland Park Avenue, Royal Crescent, St Ann's Villas, St Ann's Road, Bramley Road, Cambridge Gardens, Ladbroke Grove.

AUTHORISED STANDS, CURTAILMENT POINTS, & BLIND DESCRIPTIONS

Please note that only stands, curtailment points, & blind descriptions as detailed in this contractual document may be used.

LADBROKE GROVE, SAINSBURY

Private stand for three buses in layby on east side of Canal Way, commencing at a point opposite the covered walkway entrance to Sainsbury's supermarket.

Buses proceed from Ladbroke Grove via Canal Way to stand, departing to Canal Way. Set down in Ladbroke Grove, at Stop R (11547 - Kensal House, Last Stop on LOR: 11547 - Kensal House) and pick up in Canal Way, at Stop U (37615 - Ladbroke Grove Sainsbury's, First Stop on LOR: 37615 - Ladbroke Grove Sainsbury's).

AVAILABILITY:	At any time.
OPERATING RESTRICTIONS:	No more than 2 buses on Route 295 should be scheduled to stand at any one time.
MEAL RELIEFS:	No meal relief vehicles to stand at any time.
FERRY VEHICLES:	No ferry vehicles to park on stand at any time.
BLIND DISPLAY:	Ladbroke Grove, Sainsbury's.
OTHER INFORMATION:	Toilet facilities available in Sainsbury's. Mondays to Saturdays 24 hrs and Sundays 1000-1600.

LATIMER ROAD STATION (from CLAPHAM JUNCTION, GRANT ROAD)

Buses proceed from Bramley Road via Lancaster Road, Silchester Road, Lancaster Road and St Mark's Road departing to Cambridge Gardens. Set down in Bramley Road, at Stop B (34570 - Latimer Road Station <>, Last Stop on LOR: 34570 - Latimer Road Station <>) and pick up in Cambridge Gardens, at stop D (34574 - Cambridge Gardens / St Marks Road, First Stop on LOR: 34574 - Cambridge Gardens / St Marks Road).

AVAILABILITY:	At any time.
OPERATING RESTRICTIONS:	Turning Point Only - Buses must not stand
BLIND DISPLAY:	Latimer Road Station.

SHEPHERDS BUSH GREEN, WEST SIDE (from CLAPHAM JUNCTION, GRANT ROAD)

Public stand for two buses on west side of Shepherd's Bush Green prior to Stop S outside bingo hall.

Buses proceed from Shepherd's Bush Green (West Side) direct to stand, departing via Shepherd's Bush Green (West Side) and Uxbridge Road to Shepherd's Bush Green (South Side). Set down in Shepherd's Bush Green (west Side), at stop N (HF020 - Shepherd's Bush Green, Last Stop on LOR: HF020 - Shepherd's Bush Green) and pick up in Shepherd's Bush Green (south Side), at stop F (24994 - Shepherd's Bush Station <> #, First Stop on LOR: 24994 - Shepherd's Bush Station <> #).

AVAILABILITY:	At any time.
OPERATING RESTRICTIONS:	Unscheduled curtailments only
MEAL RELIEFS:	No meal relief vehicles to stand at any time.
FERRY VEHICLES:	No ferry vehicles to park on stand at any time.
BLIND DISPLAY:	Shepherd's Bush.

HAMMERSMITH, BROOK GREEN

Public stand for 3 buses in Shepherd's Bush Road (west and north arms), commencing opposite a point 20 metres east of the centre of Barb Mews and extending 70 metres west and south.

From Clapham Junction, Grant Road.

Buses proceed from Shepherd's Bush Road direct to stand, departing to Shepherd's Bush Road. Set down in Shepherd's Bush Road, at Stop V (679 - Hammersmith Library, Last Stop on LOR: 679 - Hammersmith Library) and pick up in Shepherd's Bush Road, at Stop B (8995 - Brook Green, First Stop on LOR: 8995 - Brook Green).

From Ladbrooke Grove, Sainsburys.

Buses proceed from Shepherd's Bush Road direct to stand, departing to Shepherd's Bush Road. Set down in Shepherd's Bush Road, at Stop B (8995 - Brook Green, Last Stop on LOR: 8995 - Brook Green) and pick up in Shepherd's Bush Road, at Stop C (3480 - Brook Green, First Stop on LOR: 3480 - Brook Green).

AVAILABILITY:	At any time.
OPERATING RESTRICTIONS:	Unscheduled curtailments only.
MEAL RELIEFS:	No meal relief vehicles to stand at any time.
FERRY VEHICLES:	No ferry vehicles to park on stand at any time.
BLIND DISPLAY:	Brook Green.

HAMMERSMITH BUS STATION, UPPER LEVEL

From Clapham Junction, Grant Road.

Buses proceed from Hammersmith Bus Station High Level departing to Hammersmith Bus Station High Level. Set down in Hammersmith Bus Station High Level, at Stop A (R0875 - Hammersmith Bus Station, Last Stop on LOR: R0875 - Hammersmith Bus Station) and pick up in Hammersmith Bus Station High Level, at Stop C (R0877 - Hammersmith Bus Station, First Stop on LOR: R0877 - Hammersmith Bus Station).

From Ladbroke Grove, Sainsburys.

Buses proceed from Hammersmith Bus Station High Level departing to Hammersmith Bus Station High Level. Set down in Hammersmith Bus Station High Level, at Stop C (R0877 - Hammersmith Bus Station, Last Stop on LOR: R0877 - Hammersmith Bus Station) and pick up in Hammersmith Bus Station High Level, at Stop A (R0875 - Hammersmith Bus Station, First Stop on LOR: R0875 - Hammersmith Bus Station).

AVAILABILITY: At any time.
OPERATING RESTRICTIONS: **Turning Point Only - Buses must not stand**
BLIND DISPLAY: Hammersmith.

VANSTON PLACE, FULHAM BROADWAY (from Ladbroke Grove, Sainsburys)

Buses proceed from Fulham Broadway via Jerdan Place and Vanston Place departing to Fulham Broadway. Set down in Fulham Broadway, at Stop E (9327 - Fulham Broadway, Last Stop on LOR: 9327 - Fulham Broadway) and pick up in Fulham Broadway, at Stop F (9328 - Fulham Broadway, First Stop on LOR: 9328 - Fulham Broadway).

AVAILABILITY: At any time.
OPERATING RESTRICTIONS: **Turning Point Only - Buses must not stand**
BLIND DISPLAY: Fulham Broadway.

NEW KINGS ROAD (from Ladbroke Grove, Sainsburys)

Buses proceed from Harwood Road via New Kings Road, Waterford Road, Michael Road, Harwood Terrace, Bagley's Lane and New Kings Road departing to Harwood Road. Set down in Harwood Road, at stop GE (1462 - Tyrawley Road, Last Stop on LOR: 1462 - Tyrawley Road) and pick up in Harwood Road, at stop GK (1461 - Tyrawley Road, First Stop on LOR: 1461 - Tyrawley Road).

AVAILABILITY: At any time.
OPERATING RESTRICTIONS: **Turning Point Only - Buses must not stand**
BLIND DISPLAY: Fulham Broadway.

WANDSWORTH BRIDGE, SOUTH SIDE (from Ladbroke Grove, Sainsburys)

Buses proceed from Bridgend Road via Wandsworth Bridge Roundabout departing to Bridgend Road. Set down in Bridgend Road, at Stop TM (29147 - Bridgend Road, Last Stop on LOR: 20389 - Townmead Road) and pick up in Bridgend Road, at Stop TD (18732 - Bridgend Road, First Stop on LOR: 18732 - Bridgend Road).

AVAILABILITY: At any time.
OPERATING RESTRICTIONS: **Turning Point Only - Buses must not stand**
BLIND DISPLAY: Wandsworth Bridge, South Side.

CLAPHAM JUNCTION STATION, GRANT ROAD

Private stand for eight buses in 2 portions in slip road off Falcon Road (west side) south of Grant Road:

1 - for three buses in slip road;

2 - for five buses standing abreast in bus parking area between slip road and Grant Road.

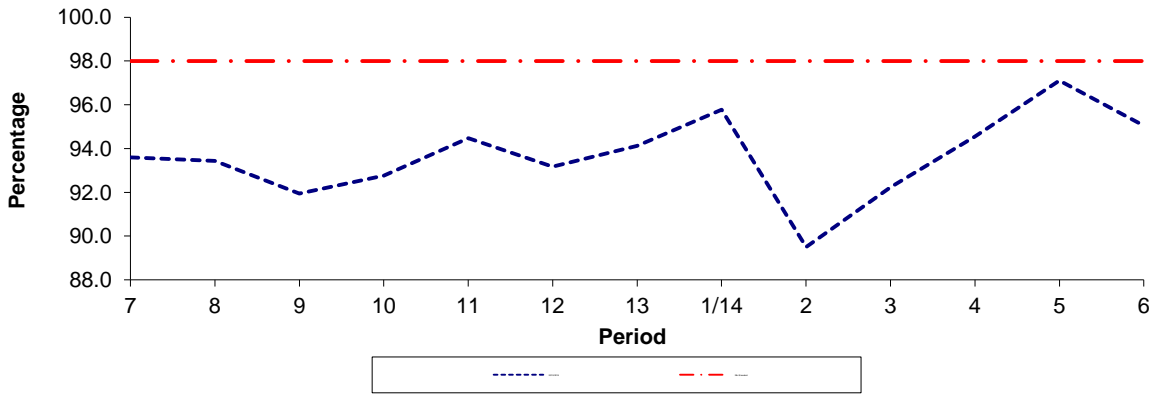
Buses proceed from Falcon Road via Slip Road to stand, departing via Slip Road and Grant Road to Falcon Road. Set down in Falcon Road, at Stop E (25569 - Clapham Junction Station / Falcon Road #, Last Stop on LOR: 25569 - Clapham Junction Station / Falcon Road #) and pick up in Falcon Road, at Stop G (8957 - Falcon Road / Grant Road, First Stop on LOR: 8957 - Falcon Road / Grant Road).

AVAILABILITY: At any time.
OPERATING RESTRICTIONS: No more than 2 buses on Route 295 should be scheduled to stand at any one time.
MEAL RELIEFS: No meal relief vehicles to stand at any time.
FERRY VEHICLES: No ferry vehicles to park on stand at any time.
BLIND DISPLAY: Clapham Junction.
OTHER INFORMATION: Toilet facilities available 24 hrs.

PART B - PERFORMANCE STATISTICS

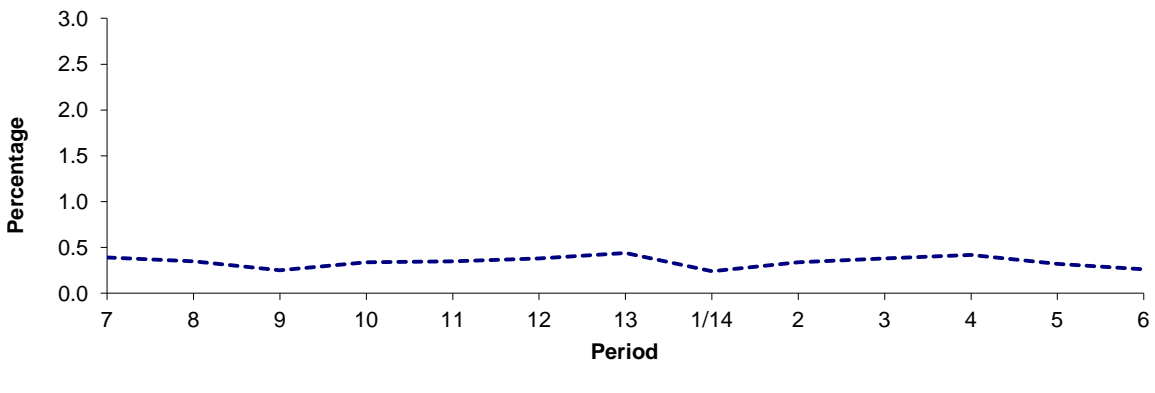
Route 295

Mileage Operated



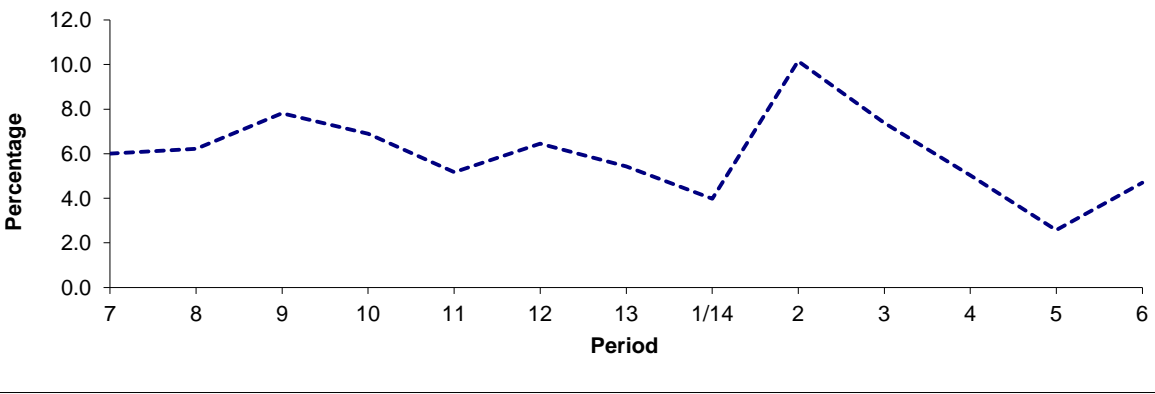
Period	7	8	9	10	11	12	13	1/14	2	3	4	5	6
2013/2014	93.60	93.43	91.94	92.76	94.48	93.17	94.13	95.78	89.50	92.23	94.55	97.11	95.04
Min Standard	98.00	98.00	98.00	98.00	98.00	98.00	98.00	98.00	98.00	98.00	98.00	98.00	98.00

Deductible Mileage



Period	7	8	9	10	11	12	13	1/14	2	3	4	5	6
2013/2014	0.39	0.35	0.25	0.34	0.35	0.38	0.44	0.24	0.34	0.38	0.42	0.32	0.26

Non Deductible Mileage

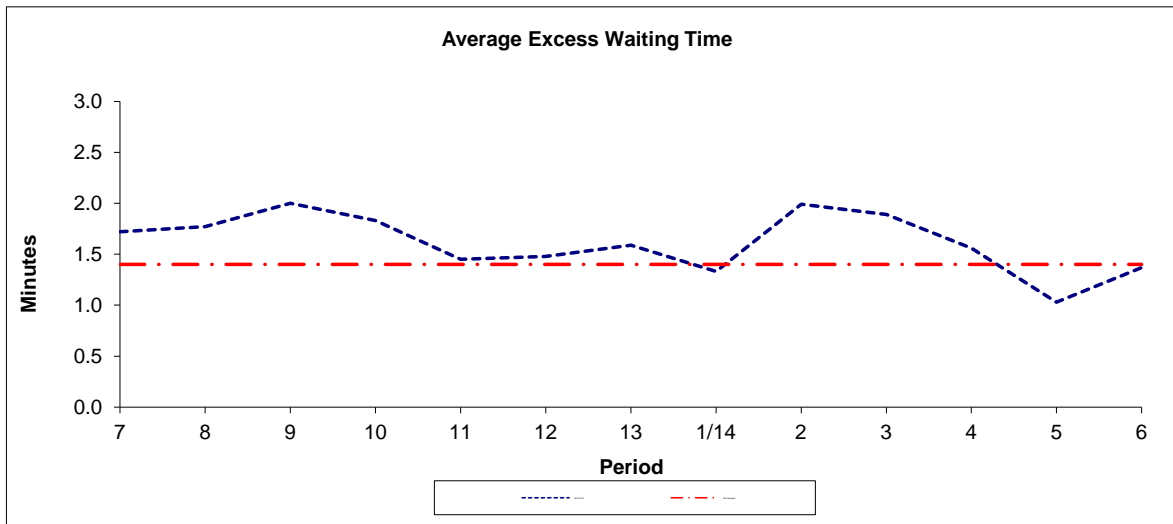


Period	7	8	9	10	11	12	13	1/14	2	3	4	5	6
2013/2014	6.01	6.22	7.81	6.90	5.17	6.45	5.43	3.98	10.16	7.39	5.03	2.57	4.70

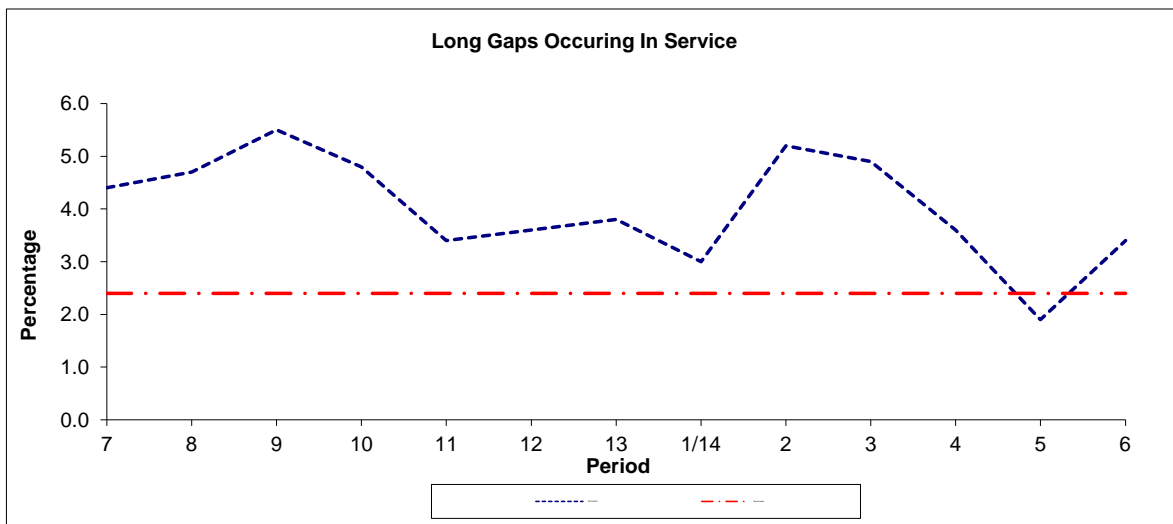
Note : Mileage is based on 4 weeks data

PART B - PERFORMANCE STATISTICS

Route 295



Period	7	8	9	10	11	12	13	1/14	2	3	4	5	6
2013-2014	1.72	1.77	2.00	1.83	1.45	1.48	1.59	1.33	1.99	1.89	1.56	1.03	1.37
Min Standard	1.40	1.40	1.40	1.40	1.40	1.40	1.40	1.40	1.40	1.40	1.40	1.40	1.40



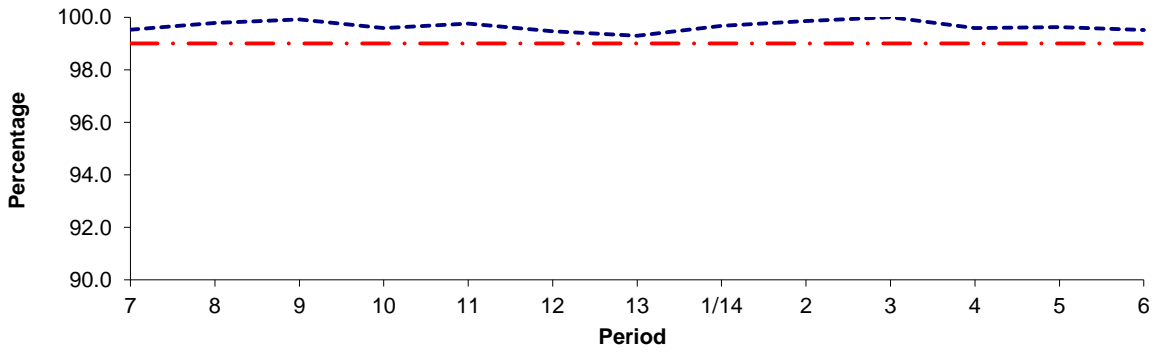
Period	7	8	9	10	11	12	13	1/14	2	3	4	5	6
2013-2014	4.4	4.7	5.5	4.8	3.4	3.6	3.8	3.0	5.2	4.9	3.6	1.9	3.4
Benchmark	2.4	2.4	2.4	2.4	2.4	2.4	2.4	2.4	2.4	2.4	2.4	2.4	2.4

Note : Reliability is actual performance under full iBus (4 weeks data).
 Minimum Standards and Benchmarks are those applicable under the new contract.

PART B - PERFORMANCE STATISTICS

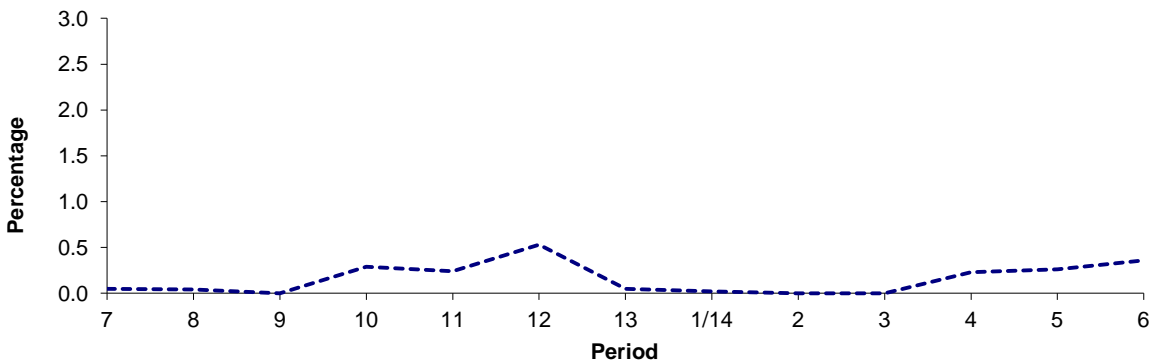
Route N295

Mileage Operated



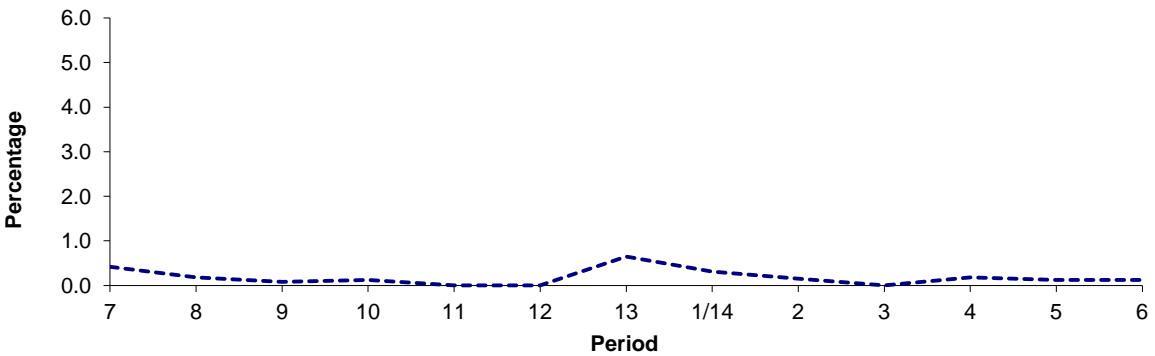
Period	7	8	9	10	11	12	13	1/14	2	3	4	5	6
2013/2014	99.53	99.78	99.92	99.59	99.76	99.47	99.30	99.67	99.85	100.00	99.59	99.62	99.52
Min Standard	99.00	99.00	99.00	99.00	99.00	99.00	99.00	99.00	99.00	99.00	99.00	99.00	99.00

Deductible Mileage



Period	7	8	9	10	11	12	13	1/14	2	3	4	5	6
2013/2014	0.05	0.04	0.00	0.29	0.24	0.53	0.05	0.02	0.00	0.00	0.23	0.26	0.36

Non Deductible Mileage

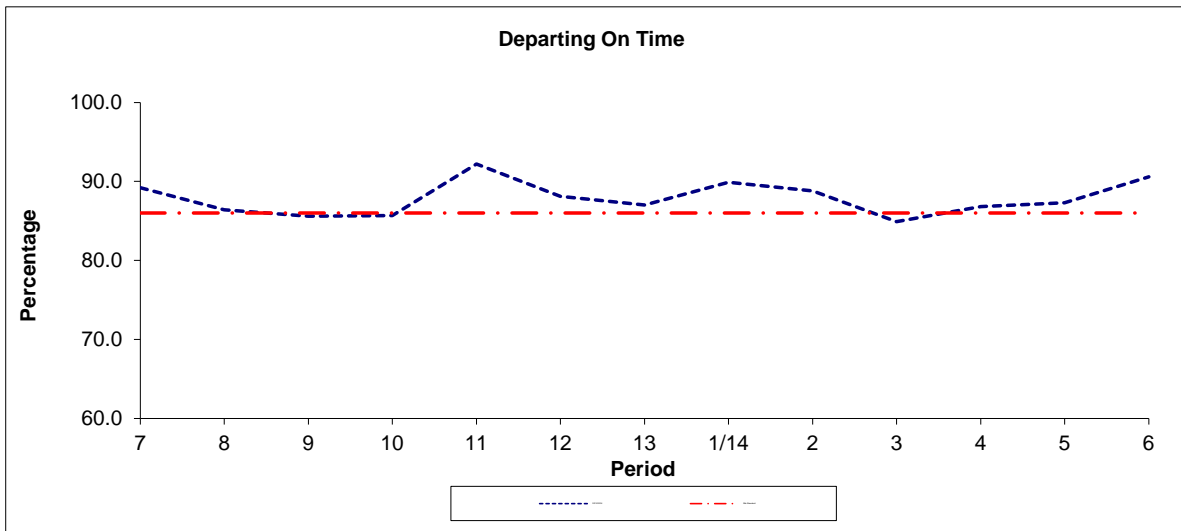


Period	7	8	9	10	11	12	13	1/14	2	3	4	5	6
2013/2014	0.42	0.18	0.08	0.12	0.00	0.00	0.65	0.31	0.15	0.00	0.18	0.12	0.12

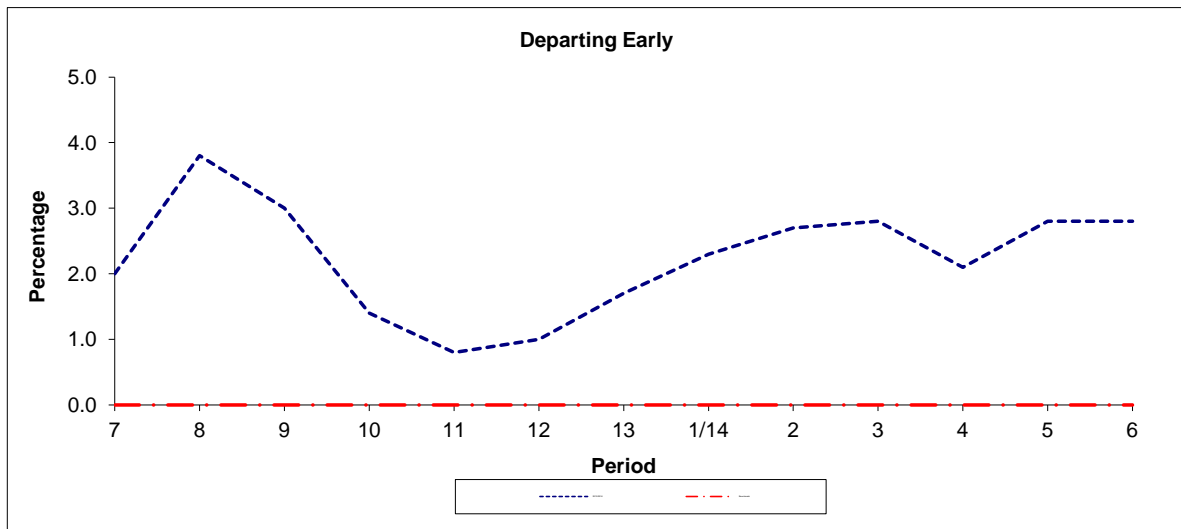
Note : Mileage is based on 4 weeks data

PART B - PERFORMANCE STATISTICS

Route N295



Period	7	8	9	10	11	12	13	1/14	2	3	4	5	6
2013/2014	89.2	86.4	85.6	85.7	92.2	88.1	87.0	89.9	88.8	84.9	86.8	87.3	90.6
Min Standard	86.0	86.0	86.0	86.0	86.0	86.0	86.0	86.0	86.0	86.0	86.0	86.0	86.0



Period	7	8	9	10	11	12	13	1/14	2	3	4	5	6
2013/2014	2.0	3.8	3.0	1.4	0.8	1.0	1.7	2.3	2.7	2.8	2.1	2.8	2.8
Benchmark	0.0	0.0	0.0	0.0	0.0	0.0	0.0	0.0	0.0	0.0	0.0	0.0	0.0

Note : Reliability is actual performance under full iBus (4 weeks data).
 Minimum Standards and Benchmarks are those applicable under the new contract.

**ROUTE 295 - FULL iBUS RESULTS BY TIME OF DAY
QUARTER 3 13/14 TO QUARTER 2 14/15 (14/09/13 - 12/09/14)**

MONDAY - FRIDAY

Time Period	Expected Buses	On AVL (%)	Scheduled Waiting Time (SWT) (mins)	Excess Waiting Time (EWT) (mins)	Actual Waiting Time (AWT) (mins)	Probability of Waiting < 10 mins (%)	Probability of Waiting 10-20 mins (%)	Probability of Waiting 20-30 mins (%)	Probability of Waiting > 30 mins (%)	Long Gaps (%)	Maximum Gap (mins)
0500 - 0700	28,196.	98.2	5.15	0.34	5.49	90.0	9.8	0.2	0.0	0.3	81
0700 - 1000	81,147.	94.3	3.94	1.27	5.20	87.1	11.9	0.9	0.1	2.8	42
1000 - 1300	78,995.	95.3	3.99	1.40	5.39	86.2	12.6	1.0	0.1	3.0	68
1300 - 1600	79,070.	93.7	3.97	1.62	5.59	84.1	13.9	1.6	0.4	4.4	66
1600 - 1900	76,660.	85.6	3.99	2.53	6.53	77.8	18.3	3.2	0.8	7.8	75
1900 - 2200	70,027.	93.6	4.35	1.92	6.27	79.6	17.8	2.2	0.4	5.1	75
2200 - 2400	36,073.	97.9	5.87	0.82	6.69	78.2	20.7	1.0	0.1	0.5	71
Summary	450,168.	93.3	4.13	1.69	5.83	82.9	15.0	1.7	0.4	4.4	81

SATURDAY

Time Period	Expected Buses	On AVL (%)	Scheduled Waiting Time (SWT) (mins)	Excess Waiting Time (EWT) (mins)	Actual Waiting Time (AWT) (mins)	Probability of Waiting < 10 mins (%)	Probability of Waiting 10-20 mins (%)	Probability of Waiting 20-30 mins (%)	Probability of Waiting > 30 mins (%)	Long Gaps (%)	Maximum Gap (mins)
0500 - 0700	4,151.	98.8	7.40	0.20	7.60	73.5	26.1	0.4	0.0	0.6	36
0700 - 1000	15,224.	100.8	4.45	0.54	4.99	90.9	9.0	0.1	0.0	0.3	27
1000 - 1300	16,636.	95.8	4.08	1.13	5.20	87.5	11.8	0.7	0.0	1.9	38
1300 - 1600	16,833.	90.1	3.98	2.01	6.00	81.6	16.1	2.0	0.3	5.5	59
1600 - 1900	16,735.	90.9	3.98	2.07	6.05	81.3	15.7	2.4	0.6	6.0	66
1900 - 2200	12,596.	96.8	5.17	1.57	6.74	75.9	21.5	2.1	0.6	2.8	49
2200 - 2400	7,716.	97.1	5.89	0.93	6.82	76.3	22.6	1.0	0.0	0.3	43
Summary	89,891.	95.1	4.38	1.49	5.87	82.9	15.3	1.5	0.3	3.4	66

SUNDAY AND BANK HOLIDAYS

Time Period	Expected Buses	On AVL (%)	Scheduled Waiting Time (SWT) (mins)	Excess Waiting Time (EWT) (mins)	Actual Waiting Time (AWT) (mins)	Probability of Waiting < 10 mins (%)	Probability of Waiting 10-20 mins (%)	Probability of Waiting 20-30 mins (%)	Probability of Waiting > 30 mins (%)	Long Gaps (%)	Maximum Gap (mins)
0500 - 0700	4,261.	99.2	7.50	0.26	7.76	72.9	26.3	0.7	0.0	0.7	39
0700 - 1000	11,767.	99.5	5.97	0.39	6.36	80.3	19.4	0.3	0.0	0.1	32
1000 - 1300	12,044.	97.6	5.87	0.88	6.75	75.8	22.4	1.6	0.2	0.7	44
1300 - 1600	11,961.	96.9	5.93	1.40	7.32	72.7	23.9	2.9	0.5	1.7	67
1600 - 1900	11,666.	95.9	5.98	1.53	7.50	71.6	24.4	3.1	0.8	2.1	53
1900 - 2200	12,187.	98.0	5.83	1.19	7.03	75.5	22.3	1.8	0.4	1.2	64
2200 - 2400	8,047.	98.8	5.88	0.72	6.60	78.3	20.9	0.7	0.0	0.3	39
Summary	71,933.	97.8	5.94	1.13	7.08	74.6	22.9	2.1	0.4	1.3	67

ALL DAYS

Time Period	Expected Buses	On AVL (%)	Scheduled Waiting Time (SWT) (mins)	Excess Waiting Time (EWT) (mins)	Actual Waiting Time (AWT) (mins)	Probability of Waiting < 10 mins (%)	Probability of Waiting 10-20 mins (%)	Probability of Waiting 20-30 mins (%)	Probability of Waiting > 30 mins (%)	Long Gaps (%)	Maximum Gap (mins)
0500 - 0700	36,608.	98.4	5.53	0.32	5.86	87.2	12.6	0.2	0.0	0.3	81
0700 - 1000	108,138.	95.8	4.08	1.16	5.24	87.1	12.0	0.8	0.1	2.5	42
1000 - 1300	107,675.	95.7	4.21	1.30	5.51	85.3	13.6	1.0	0.1	2.5	68
1300 - 1600	107,864.	93.5	4.17	1.66	5.83	82.5	15.2	1.8	0.4	4.3	67
1600 - 1900	105,061.	87.5	4.17	2.39	6.56	77.6	18.5	3.1	0.8	7.1	75
1900 - 2200	94,810.	94.6	4.61	1.79	6.41	78.7	18.7	2.2	0.4	4.4	75
2200 - 2400	51,836.	97.9	5.87	0.82	6.70	78.0	21.0	0.9	0.1	0.4	71
Summary	611,992.	94.1	4.33	1.62	5.94	82.2	15.7	1.7	0.4	4.0	81

ROUTE N295 - FULL iBUS RESULTS BY TIME OF DAY
QUARTER 3 13/14 TO QUARTER 2 14/15 (14/09/13 - 12/09/14)

MONDAY - FRIDAY

Time Period	Expected Buses	On AVL (%)	Linked (%)	Departing On Time (%)	Non Arrival / Not Linked (%)	Departing 8 - 2.5 mins Early (%)	Departing 5 - 15 mins Late (%)
0000 - 0500	30,486.	99.8	99.2	92.4	1.8	3.4	2.4
Summary	30,486.	99.8	99.2	92.4	1.8	3.4	2.4

SATURDAY

Time Period	Expected Buses	On AVL (%)	Linked (%)	Departing On Time (%)	Non Arrival / Not Linked (%)	Departing 8 - 2.5 mins Early (%)	Departing 5 - 15 mins Late (%)
0000 - 0500	6,433.	100.2	98.8	84.0	2.9	0.4	12.7
Summary	6,433.	100.2	98.8	84.0	2.9	0.4	12.7

SUNDAY AND BANK HOLIDAYS

Time Period	Expected Buses	On AVL (%)	Linked (%)	Departing On Time (%)	Non Arrival / Not Linked (%)	Departing 8 - 2.5 mins Early (%)	Departing 5 - 15 mins Late (%)
0000 - 0500	6,851.	98.9	98.2	81.1	3.5	1.2	14.1
Summary	6,851.	98.9	98.2	81.1	3.5	1.2	14.1

ALL DAYS

Time Period	Expected Buses	On AVL (%)	Linked (%)	Departing On Time (%)	Non Arrival / Not Linked (%)	Departing 8 - 2.5 mins Early (%)	Departing 5 - 15 mins Late (%)
0000 - 0500	43,770.	99.7	99.0	87.8	2.4	2.2	7.6
Summary	43,770.	99.7	99.0	87.8	2.4	2.2	7.6

Transport for London - QSI Points and Live Mileage List

Route 295
 Service change 22961
 Date 21 September 2009

QSI Points are highlighted.

OUT DIRECTION				
Timing Point Code	Stop Number	Stop Name	Metres	Miles
LADBSY S	LADBSY S	LADBROKE GROVE, SAINSBURYS		
LADBSY	37615	Ladbroke Grove Sainsburys	0	0.00
	11548	Kensal House	134	0.08
	11546	Barlby Road	232	0.14
	11544	St Charles Square	253	0.16
	11542	Chesterton Road	200	0.12
	11550	Cambridge Gardens / Ladbroke Grove	280	0.17
	34574	Cambridge Gardens / St Mark's Road	284	0.18
	34573	Crowthorne Road	251	0.16
LATRSN	34571	Latimer Road Station	248	0.15
	37689	Stoneleigh Place	194	0.12
	34567	Wilsham Street	307	0.19
	34565	Queensdale Road	328	0.20
	837	Royal Crescent	259	0.16
SBGNSS	24994	Shepherds Bush Station	460	0.29
	843	Goldhawk Road	309	0.19
	8895	Blythe Road	384	0.24
	8995	Brook Green	284	0.18
	682	Hammersmith Library	344	0.21
HAMMBU	R0877	Hammersmith Bus Station	283	0.18
	33000	Hammersmith Broadway	148	0.09
	8886	Charing Cross Hospital	491	0.31
	401	Greyhound Road	143	0.09
	4655	Bothwell Street	325	0.20
LLRDMR	11249	Munster Road/Fulham Cross	347	0.22
	11247	Hannell Road	148	0.09
	11245	The Salisbury Tavern	387	0.24
	11243	Shorrolds Road	229	0.14
	1459	North End Road	214	0.13
FULHBY	9327	Fulham Broadway	243	0.15
	25627	Fulham Town Hall	317	0.20
	1462	Tyrawley Road	221	0.14
	11277	New King's Road	287	0.18
	BP4891	Bovingdon Road	184	0.11
	1675	Sands End / Hazlebury Road	243	0.15
	11279	Oakbury Road	197	0.12
	20389	Townmead Road	336	0.21
WDBGBR	29147	Bridgend Road	488	0.30
	25513	Petergate	179	0.11
	25515	Chatfield Road	350	0.22
	25519	Hope Street	135	0.08
	34971	Wallis Close	153	0.10
	34969	Wayland Road Estate	162	0.10
	34966	Strath Terrace	389	0.24
	BP5645	Clapham Junction, St John's Hill		
CJSNFC	25569	Clapham Junction Station/Falcon Road		
	CJSNGR S	CLAPHAM JUNCTION STATION, GRANT ROAD	0	0.00
TOTAL ROUTE MILEAGE - OUT DIRECTION			11923	7.41
			metres	miles

TRANCHE 497

BACK DIRECTION				
Timing Point Code	Stop Number	Stop Name	Metres	Miles
CJSNGR S	CJSNGR S	CLAPHAM JUNCTION STATION, GRANT ROAD		
CLJNMA	8957	Meyrick Arms	0	0.00
	27937	Clapham Junction Station	403	0.25
	34967	Strath Terrace	419	0.26
	34968	Wayland Road Estate	298	0.19
	34970	Wallis Close	93	0.06
	25518	Hope Street	232	0.14
	25514	Chatfield Road	224	0.14
	25512	Petergate	256	0.16
WDBGBR	18732	Bridgend Road	441	0.27
	3827	Townmead Road	527	0.33
	20655	Oakbury Road	320	0.20
	1674	Sands End / Hazlebury Road	219	0.14
	11276	New Kings Road	368	0.23
	1461	Tyrawley Road	259	0.16
	3649	Fulham Town Hall	298	0.19
FULHBY	9328	Fulham Broadway	251	0.16
	1460	North End Road	309	0.19
	11244	Shorrolds Road	217	0.13
	11246	Sherbrooke Road	287	0.18
	11248	Munster Road	297	0.18
LLRDMR	11242	Fulham Cross	275	0.17
	400	Greyhound Road	388	0.24
	8887	Charing Cross Hospital	362	0.22
	33001	Hammersmith Broadway	330	0.21
HAMMBU	R0875	Hammersmith Bus Station	397	0.25
	679	Hammersmith Library	454	0.28
	3480	Brook Green	469	0.29
	8894	Blythe Road	327	0.20
SBGNSB	842	Goldhawk Road	222	0.14
	HF020	Shepherds Bush Green	194	0.12
SBGNUR	832	Shepherds Bush Station	475	0.30
	34564	Queensdale Road	616	0.38
	34566	Wilsham Street	208	0.13
	36788	Stoneleigh Place	228	0.14
LATRSN	34570	Latimer Road Station	387	0.24
	34572	Crowthorne Road	144	0.09
	34575	Cambridge Gardens / St Mark's Road	314	0.20
	25448	Cambridge Gardens / Ladbroke Grove	293	0.18
	11541	Chesterton Road	243	0.15
	11543	St Charles Square	186	0.12
	11545	Barlby Road	246	0.15
LADBSY	11547	Kensal House	252	0.16
	LADBSY S	LADBROKE GROVE, SAINSBURYS	0	0.00
TOTAL ROUTE MILEAGE - BACK DIRECTION			12728	7.91
			metres	miles