

## 7. Service Specification

Route: 277 & N277

Contract Reference: QC55206

This Service Specification forms section 7 of the ITT and should be read in conjunction with the ITT document, Version 1 dated 29 September 2011.

You are formally invited to tender for the provision of the bus service detailed below and in accordance with this Service Specification. Tenderers must ensure that a Compliant Tender is submitted and this will only be considered for evaluation if all parts of the Tender documents, as set out in section 11, have been received by the Corporation by the Date of Tender. The Tender must be fully completed in the required format, in accordance with the Instructions to Tenderers. A Compliant Tender must comply fully with the requirements of the Framework Agreement; adhere to the requirements of the Service Specification; and reflect the price of operating the Services with new vehicles.

|   |  |
|---|--|
| <b>Terminus Points - Route No. 277</b>                    | <b>Option 1:</b> Highbury & Islington Station and Crossharbour, Asda<br><b>Option 2:</b> Dalston Junction Bus Station and Crossharbour, Asda |
| <b>Terminus Points - Route No. N277</b>                   | <b>Option 1:</b> Highbury & Islington Station and Crossharbour, Asda<br><b>Option 2:</b> Angel, White Lion Street and Crossharbour, Asda     |
| <b>Contract Basis</b>                                     | Incentivised   |
| <b>Commencement Date</b>                                  | 25 <sup>th</sup> February 2017   |
| <b>Vehicle Type</b>                                       | 87 capacity, dual door, double deck buses, subject to a satisfactory route test  |
| <b>Current Maximum Approved Dimensions</b>                | 10.2 metres long and 2.55 metres wide  |
| <b>New Vehicles Mandatory</b>                             | Yes  |
| <b>Hybrid Price Required</b>                              | Yes  |
| <b>Sponsored Route</b>                                    | No   |
| <b>Advertising Rights</b>                                 | Operator   |
| <b>Minimum Performance Standard - Route No. 277</b>       | Average Excess Wait Time - No more than 1.10 minutes   |
| <b>Extension Threshold - Route No. 277</b>                | Average Excess Wait Time Threshold - 1.00 minutes  |
| <b>Minimum Operated Mileage Standard - Route No. 277</b>  | No less than 98.00%  |
| <b>Departing On Time - Route No. N277</b>                 | Departing on Time - No less than 90.00%  |
| <b>Minimum Operated Mileage Standard - Route No. N277</b> | No less than 99.00%  |

The Date of Tender for this ITT is:

No later than 12 Noon on Monday 4<sup>th</sup> April 2016

*Tenderers should refer to section 3 of Part A for the Service Specification Explanatory Notes and Appendix B of section 5 for the Example Service Specification of the ITT document.*

## **SERVICE SPECIFICATION**

- 1) SERVICE SPEC - ROUTE SPECIFICATION INFORMATION
- 2) NOTES
- 3) SCHEDULE REQUIREMENTS & PINCHPOINTS
- 4) OPERATIONAL CONSIDERATIONS
- 5) ROUTE RECORD, CURRENT PERFORMANCE, QSI BY TIME OF DAY, IBUS MILEAGE & QSI POINTS

## 2) NOTES

### **Proposed Changes:**

At this time, no changes are proposed to the existing service for introduction prior to the commencement of the new Route Agreement for Route No. 277 & N277.

- **Tenderers should refer to the schedules dated 16/05/2015 rather than the current emergency schedules.**

Tenderers should note that the following alterations (subject to consultation) are proposed as part of this Service Specification for introduction with the new Route Agreement:

Two options are specified:

### **OPTION 1**

- The designation Route No. N277 is used for contractual purposes only. This service will be marketed as Route No. 277. This includes all publicity, including destination blind displays.

### **OPTION 2**

- Route No. 277 only is restructured to operate between Dalston Junction and Crossharbour, Asda.
- The section between Dalston Junction and Highbury & Islington Station is withdrawn.
- Route No. N277 only is extended from Highbury & Islington Station to Angel, White Lion Street.
- **Please see Section 5 for a full list of streets traversed and standing arrangements.**

### **OPTIONS 1 & 2**

- Route Nos. 277 & N277 are restructured to operate between Highbury & Islington Station and Crossharbour, Asda.
- The section between Upper Bank Street and Leamouth, Saffron Avenue is withdrawn.
- **Please see Section 5 for a full list of streets traversed and standing arrangements.**

87 capacity, dual door, double deck buses are specified, subject to a satisfactory route test.

- Arising from these changes (in Option 1 & Option 2), associated changes are proposed to Route No. D3 as specified in Tranche 534
- **Tenderers must identify the cost of the Nightly element of this service separately.**

**Tenderers are also encouraged to offer two axle vehicles with a longer wheelbase and increased capacity, subject to route constraints. Tenders offering such vehicles will be welcomed and carefully considered by the Corporation. Triaxle vehicles are not being considered by the Corporation at this time.**

**Operators should provide the following prices:**

- 1. Annual diesel price - based on minimum 5 year contract.**
- 2. Annual hybrid price - based on minimum 5 year contract.**
- 3. Annual hybrid price - with upfront payment of capital difference between diesel and hybrid for 5 year contract.**

**Full iBus Monitoring was introduced on all night routes with effect from 1 April 2014.**

**Tenderers are therefore advised that on contracts where there is a night service both the day and night elements will be incentivised from the commencement of the Route Agreement in accordance with clause 46 of Annex B Terms and Conditions, using the Minimum Performance Standard(s) specified in Part 1 of the ITT.**

### 3) SCHEDULE REQUIREMENTS & PINCHPOINTS

#### 3.1) MONDAY TO FRIDAY SCHEDULE REQUIREMENTS & PINCHPOINTS

##### OPTION 1

|  |   |           |  |   |           |
|--|---|-----------|--|---|-----------|
| Highbury & Islington Station to Crossharbour, Asda |   |           | Crossharbour, Asda to Highbury & Islington Station |   |           |
| First departure no later than 0440.                |   |           | First departure no later than 0435.                |   |           |
| 0435 - 0540  | Every 12 minutes                        |           | 0430 - 0535  | Every 12 minutes                        |           |
| 0541 - 0610  | Every 10 minutes                        |           | 0536 - 0555  | Every 10 minutes                        |           |
| 0611 - 0645  | Every 8 minutes                         |           | 0556 - 0620  | Every 8 minutes                         |           |
| 0646 - 2000  | Every 6-7 minutes<br>(9 buses per hour) |           | 0621 - 1850  | Every 6-7 minutes<br>(9 buses per hour) |           |
| 2001 - 2030  | Every 8 minutes                         |           | 1851 - 1950  | Every 8 minutes                         |           |
| 2031 - 0005  | Every 10 minutes                        |           | 1951 - 0005  | Every 10 minutes                        |           |
| Last departure no earlier than 2400.               |   |           | Last departure no earlier than 2400.               |   |           |
| <b>Pinchpoints</b>                                 |   |           |  |   |           |
| Limehouse,<br>Burdett Road                         | 0720 - 0905                             | 7 minutes | Hackney<br>Central<br>Station,<br>Graham Road      | 0700 - 0900                             | 7 minutes |
|  | 1500 - 1630                             | 7 minutes |  | 1500 - 1630                             | 7 minutes |

##### OPTION 2

|  |   |           |  |   |           |
|--|---|-----------|--|---|-----------|
| Dalston Junction Bus Station to Crossharbour, Asda |   |           | Crossharbour, Asda to Dalston Junction Bus Station |   |           |
| First departure no later than 0450.                |   |           | First departure no later than 0435.                |   |           |
| 0445 - 0550  | Every 12 minutes                        |           | 0430 - 0535  | Every 12 minutes                        |           |
| 0551 - 0620  | Every 10 minutes                        |           | 0536 - 0555  | Every 10 minutes                        |           |
| 0621 - 0655  | Every 8 minutes                         |           | 0556 - 0620  | Every 8 minutes                         |           |
| 0656 - 2010  | Every 6-7 minutes<br>(9 buses per hour) |           | 0621 - 1850  | Every 6-7 minutes<br>(9 buses per hour) |           |
| 2011 - 2040  | Every 8 minutes                         |           | 1851 - 1950  | Every 8 minutes                         |           |
| 2041 - 0015  | Every 10 minutes                        |           | 1951 - 0005  | Every 10 minutes                        |           |
| Last departure no earlier than 0010.               |   |           | Last departure no earlier than 2400.               |   |           |
| <b>Pinchpoints</b>                                 |   |           |  |   |           |
| Limehouse,<br>Burdett Road                         | 0720 - 0905                             | 7 minutes | Hackney<br>Central<br>Station,<br>Graham Road      | 0700 - 0900                             | 7 minutes |
|  | 1500 - 1630                             | 7 minutes |  | 1500 - 1630                             | 7 minutes |

### 3) SCHEDULE REQUIREMENTS & PINCHPOINTS - continued

#### 3.2) SATURDAY AND GOOD FRIDAY SCHEDULE REQUIREMENTS & PINCHPOINTS

##### OPTION 1

|  |   |           |  |   |           |
|--|---|-----------|--|---|-----------|
| Highbury & Islington Station to Crossharbour, Asda |   |           | Crossharbour, Asda to Highbury & Islington Station |   |           |
| First departure no later than 0440.                |   |           | First departure no later than 0435.                |   |           |
| 0435 - 0625  | Every 15 minutes                        |           | 0430 - 0605  | Every 15 minutes                        |           |
| 0626 - 0650  | Every 12 minutes                        |           | 0606 - 0655  | Every 12 minutes                        |           |
| 0651 - 0750  | Every 10 minutes                        |           | 0656 - 0805  | Every 10 minutes                        |           |
| 0751 - 0825  | Every 8 minutes                         |           | 0806 - 0825  | Every 8 minutes                         |           |
| 0826 - 1910  | Every 6-7 minutes<br>(9 buses per hour) |           | 0826 - 1825  | Every 6-7 minutes<br>(9 buses per hour) |           |
| 1911 - 2000  | Every 8 minutes                         |           | 1826 - 1920  | Every 8 minutes                         |           |
| 2001 - 0005  | Every 10 minutes                        |           | 1921 - 0005  | Every 10 minutes                        |           |
| Last departure no earlier than 2400.               |   |           | Last departure no earlier than 2400.               |   |           |
| <b>Pinchpoints</b>                                 |   |           |  |   |           |
| Limehouse,<br>Burdett Road                         | 0855 - 1100                             | 7 minutes | Hackney<br>Central<br>Station,<br>Graham Road      | 0850 - 1050                             | 7 minutes |

##### OPTION 2

|  |   |           |  |   |           |
|--|---|-----------|--|---|-----------|
| Dalston Junction Bus Station to Crossharbour, Asda |   |           | Crossharbour, Asda to Dalston Junction Bus Station |   |           |
| First departure no later than 0450.                |   |           | First departure no later than 0435.                |   |           |
| 0445 - 0635  | Every 15 minutes                        |           | 0430 - 0605  | Every 15 minutes                        |           |
| 0636 - 0700  | Every 12 minutes                        |           | 0606 - 0655  | Every 12 minutes                        |           |
| 0701 - 0800  | Every 10 minutes                        |           | 0656 - 0805  | Every 10 minutes                        |           |
| 0801 - 0835  | Every 8 minutes                         |           | 0806 - 0825  | Every 8 minutes                         |           |
| 0836 - 1920  | Every 6-7 minutes<br>(9 buses per hour) |           | 0826 - 1825  | Every 6-7 minutes<br>(9 buses per hour) |           |
| 1921 - 2010  | Every 8 minutes                         |           | 1826 - 1920  | Every 8 minutes                         |           |
| 2011 - 0015  | Every 10 minutes                        |           | 1921 - 0005  | Every 10 minutes                        |           |
| Last departure no earlier than 0010.               |   |           | Last departure no earlier than 2400.               |   |           |
| <b>Pinchpoints</b>                                 |   |           |  |   |           |
| Limehouse,<br>Burdett Road                         | 0855 - 1100                             | 7 minutes | Hackney<br>Central<br>Station,<br>Graham Road      | 0850 - 1050                             | 7 minutes |

**3) SCHEDULE REQUIREMENTS & PINCHPOINTS - continued**

**3.3) SUNDAY AND PUBLIC HOLIDAYS (EXCEPT GOOD FRIDAY AND CHRISTMAS DAY) SCHEDULE REQUIREMENTS & PINCHPOINTS**

**OPTION 1**

|  |                  |            |  |                  |            |
|--|------------------|------------|--|------------------|------------|
| Highbury & Islington Station to Crossharbour, Asda |                  |            | Crossharbour, Asda to Highbury & Islington Station |                  |            |
| First departure no later than 0440.                |                  |            | First departure no later than 0435.                |                  |            |
| 0435 - 0710  | Every 15 minutes |            | 0430 - 0735  | Every 15 minutes |            |
| 0711 - 0755  | Every 12 minutes |            | 0736 - 0820  | Every 12 minutes |            |
| 0756 - 0005  | Every 10 minutes |            | 0821 - 0005  | Every 10 minutes |            |
| Last departure no earlier than 2400.               |                  |            | Last departure no earlier than 2400.               |                  |            |
| <b>Pinchpoints</b>                                 |                  |            |  |                  |            |
| Limehouse, Burdett Road                            | 1005 - 1145      | 10 minutes | Hackney Central Station, Graham Road               | 1020 - 1120      | 10 minutes |

**Tenderers must identify the cost of the Boxing Day element of this service separately.**

**OPTION 2**

|  |                  |            |  |                  |            |
|--|------------------|------------|--|------------------|------------|
| Dalston Junction Bus Station to Crossharbour, Asda |                  |            | Crossharbour, Asda to Dalston Junction Bus Station |                  |            |
| First departure no later than 0450.                |                  |            | First departure no later than 0435.                |                  |            |
| 0445 - 0720  | Every 15 minutes |            | 0430 - 0735  | Every 15 minutes |            |
| 0721 - 0805  | Every 12 minutes |            | 0736 - 0820  | Every 12 minutes |            |
| 0806 - 0015  | Every 10 minutes |            | 0821 - 0005  | Every 10 minutes |            |
| Last departure no earlier than 0010.               |                  |            | Last departure no earlier than 2400.               |                  |            |
| <b>Pinchpoints</b>                                 |                  |            |  |                  |            |
| Limehouse, Burdett Road                            | 1005 - 1145      | 10 minutes | Hackney Central Station, Graham Road               | 1020 - 1120      | 10 minutes |

**Tenderers must identify the cost of the Boxing Day element of this service separately.**

**3) SCHEDULE REQUIREMENTS & PINCHPOINTS - continued**

**3.4) NIGHTLY**

**OPTION 1**

|   |                  |   |                  |
|---|------------------|---|------------------|
| Highbury & Islington Station to<br>Crossharbour, Asda |                  | Crossharbour, Asda to Highbury & Islington<br>Station |                  |
| First departure no later than 0015.                   |                  | First departure no later than 0015.                   |                  |
| 0010 - 0420   | Every 30 minutes | 0010 - 0420   | Every 30 minutes |
| Last departure no earlier than 0415.                  |                  | Last departure no earlier than 0415.                  |                  |

**Tenderers must identify the cost of the Nightly element of this service separately.**

**OPTION 2**

|   |                  |   |                  |
|---|------------------|---|------------------|
| Angel, White Lion Street to Crossharbour,<br>Asda |                  | Crossharbour, Asda to Angel, White Lion<br>Street |                  |
| First departure no later than 0010.               |                  | First departure no later than 0015.               |                  |
| 0005 - 0415                                       | Every 30 minutes | 0010 - 0420                                       | Every 30 minutes |
| Last departure no earlier than 0410.              |                  | Last departure no earlier than 0415.              |                  |

**Tenderers must identify the cost of the Nightly element of this service separately.**



#### 4) OPERATIONAL CONSIDERATIONS

- 4.1) Route No. 277 should interwork with Route No. N277 between Crossharbour, Asda to Dalston Junction Bus Station to form a seamless 24 hour service.
- 4.2) Route Nos. 277 & N277 can suffer from unpredictable traffic delays in the Highbury & Islington, Dalston and Hackney areas on Monday to Fridays, particularly during peak periods.
- 4.3) **Stand space at Highbury and Islington Station is limited. Therefore, it is essential that the stand restriction of 2 buses is observed at all times.**
- 4.4) Football matches at Arsenal Football Club can also cause traffic congestion in the Highbury & Islington area.
- 4.5) Crossrail will connect the City, Canary Wharf, the West End and Heathrow Airport to commuter areas east and west of the capital. Major construction of the railway began in 2010, with the first services expected to commence through the central London tunnelled section in late 2018. The full Crossrail service will be operating from Heathrow and Reading to Abbey Wood and Shenfield in late 2019. The construction impacts of Crossrail could affect Route Nos. 277 & N277 and it is anticipated that some passenger demand for Route Nos. 277 & N277 may shift to this line when it opens. Route Nos. 277 & N277 will be reviewed after the opening date.
- 4.6) Two continuous largely segregated cycle routes through central London are due to open in March 2016. The East-West Cycle Superhighway will operate between Tower Hill and Acton and the North-South Cycle Superhighway will operate between Elephant & Castle and Farringdon station. North of Farringdon station, the North-South route is planned to connect to a new Quietway back-street cycle route to King's Cross. This would provide cyclists with a route through central London on low traffic streets. The impact of Cycle Superhighway on Route Nos. 277 & N277 will be reviewed after the opening date.
- 4.7) Heron Quay DLR Station is closed until 2019. Until this is re-opened Route Nos. 277 & N277 will double-un into Canary Wharf from West India Avenue. Once Heron Quay DLR Station has re-opened, buses will return to operate via Heron Quay & Bank Street.

**5) ROUTE RECORD, CURRENT PERFORMANCE, QSI BY TIME OF DAY,  
IBUS MILEAGE & QSI POINTS**

5.1) ROUTE RECORD  
As per Busnet printout.

5.2) CURRENT PERFORMANCE  
As per current print out.

5.3) QSI BY TIME OF DAY  
As per current print out.

5.4) IBUS MILEAGE & QSI POINTS  
As per current print out.

## LONDON BUSES - ROUTE DESCRIPTION

### **ROUTE 277: Highbury & Islington Station - Crossharbour, Asda (24 hour service)**

**Date of Structural Change:** 24 February 2017.

**Date of Service Change:** 24 February 2017.

**Reason for Issue:** New Tender.

#### **STREETS TRAVERSED**

**Towards Crossharbour, Asda:** St Paul's Road, Balls Pond Road, Dalston Lane, Graham Road, Mare Street, Well Street, Cassland Road, Terrace Road, Church Crescent, Lauriston Road, Grove Road, Burdett Road, West India Dock Road, Westferry Road, Westferry Circus (Upper Level), West India Avenue, Cabot Square (North Side), The North Colonnade, Canada Square (North Side), The South Colonnade, Cabot Square, West India Avenue, Westferry Circus (Upper Level), Westferry Road, East Ferry Road, Asda Access Road.

**Towards Highbury & Islington Station:** Asda Access Road, East Ferry Road, Westferry Road, Westferry Circus (Upper Level), West India Avenue, Cabot Square (South Side), The North Colonnade, Canada Square (South Side), The South Colonnade, Cabot Square, West India Avenue, Westferry Circus (Upper Level), Westferry Road, Trinidad Street, Salter Street, West India Dock Road, Burdett Road, Grove Road, Lauriston Road, Well Street, Mare Street, Graham Road, Dalston Lane, Balls Pond Road, St Paul's Road.

## **AUTHORISED STANDS, CURTAILMENT POINTS, & BLIND DESCRIPTIONS**

Please note that only stands, curtailment points, & blind descriptions as detailed in this contractual document may be used.

### **HIGHBURY & ISLINGTON STATION**

Public stand for two buses on east side of Highbury Corner commencing 37 metres south of the southern kerb line of St Paul's Road and extending 22 metres north.

Buses proceed from St Paul's Road via Highbury Corner to stand, departing via Highbury Corner to St Paul's Road. Set down in St Paul's Road, at Stop D (11470 - Highbury Corner, Last Stop on LOR: 11470 - Highbury Corner) and pick up in St Paul's Road, at Stop C (11469 - St Paul's Road / Highbury Corner, First Stop on LOR: 11469 - St Paul's Road / Highbury Corner).

|                         |   |
|-------------------------|---|
| AVAILABILITY:           | At any time.  |
| OPERATING RESTRICTIONS: | No more than 2 buses on Route 277 should be scheduled to stand at any one time. |
| MEAL RELIEFS:           | No meal relief vehicles to stand at any time.                                   |
| FERRY VEHICLES:         | No ferry vehicles to park on stand at any time.                                 |
| BLIND DISPLAY:          | Highbury & Islington.   |
| OTHER INFORMATION:      | Toilet facilities available in Highbury & Islington Station 0600-0100 daily.    |

### **MILDMAY PARK (from CROSSHARBOUR, ASDA)**

Public stand for three buses on south side of Dove Road, commencing at a point 52.4 metres east of Essex Road and extending 38.8 metres east.

Buses proceed from Balls Pond Road via Southgate Road and Dove Road to stand, departing via Dove Road and Essex Road to Balls Pond Road. Set down in Balls Pond Road, at Stop BH (913 - Southgate Road, Last Stop on LOR: 913 - Southgate Road) and pick up in Balls Pond Road, at Stop CC (2638 - Mildmay Park / Southgate Road, First Stop on LOR: 2638 - Mildmay Park / Southgate Road).

|                         |   |
|-------------------------|---|
| AVAILABILITY:           | At any time.                                    |
| OPERATING RESTRICTIONS: | Unscheduled curtailments only.                  |
| MEAL RELIEFS:           | No meal relief vehicles to stand at any time.   |
| FERRY VEHICLES:         | No ferry vehicles to park on stand at any time. |
| BLIND DISPLAY:          | Mildmay Park.                                   |

### **HACKNEY WELL STREET (from CROSSHARBOUR, ASDA)**

Buses proceed from Well Street via Mare Street and Bush Road to stand, departing via Bush Road, Sheep Lane, Westgate Street, The Triangle and Mare Street to Well Street. Set down in Well Street, at Stop LX (25446 - Shore Road, Last Stop on LOR: 25446 - Shore Road) and pick up in Well Street, at Stop LW (25445 - Shore Road, First Stop on LOR: 25445 - Shore Road).

AVAILABILITY: At any time.  
OPERATING RESTRICTIONS: Unscheduled curtailments only  
MEAL RELIEFS: No meal relief vehicles to stand at any time.  
FERRY VEHICLES: No ferry vehicles to park on stand at any time.  
BLIND DISPLAY: Hackney Well Street.

### **LAURISTON ROAD, CHURCH CRESCENT**

Public off side stand for one bus on west side of Church Crescent commencing 11 metres north of lamp standard Z2 extending 13 metres north.

#### From Crossharbour, Asda.

Buses proceed from Lauriston Road via Church Crescent to stand, departing via Church Crescent to Lauriston Road. Set down in Lauriston Road, at Stop Q (14470 - Moulins Road, Last Stop on LOR: 14470 - Moulins Road) and pick up in Lauriston Road, at Stop W (14474 - Penshurst Road, First Stop on LOR: 14474 - Penshurst Road).

#### From Highbury & Islington Station.

Buses proceed from Church Crescent direct to stand, departing via Church Crescent to Lauriston Road. Set down in Church Crescent, at Stop V (BP4167 - Church Crescent, Last Stop on LOR: BP4167 - Church Crescent) and pick up in Lauriston Road, at Stop Q (14470 - Moulins Road, First Stop on LOR: 14470 - Moulins Road).

AVAILABILITY: At any time.  
OPERATING RESTRICTIONS: Unscheduled curtailments only.  
MEAL RELIEFS: No meal relief vehicles to stand at any time.  
FERRY VEHICLES: No ferry vehicles to park on stand at any time.  
BLIND DISPLAY: South Hackney, Church Crescent.

## **MILE END STATION, GROVE ROAD**

Private stand for six buses in bus station on west side of Grove Road, commencing 55 metres north of Mile End Road and extending 30 metres on offside and 30 metres on nearside.

### From Crossharbour, Asda.

Buses proceed from Burdett Road via Grove Road and Mile End Bus Station to stand, departing via Mile End Bus Station to Grove Road. Set down in Burdett Road, at Stop B (1423 - Mile End Station <>, Last Stop on LOR: 1423 - Mile End Station <>) and pick up in Grove Road, at Stop H (1422 - Mile End Station <>/ Bow Road, First Stop on LOR: 1422 - Mile End Station <>/ Bow Road).

### From Highbury & Islington Station.

Buses proceed from Grove Road via Mile End Bus Station to stand, departing via Mile End Bus Station to Grove Road. Set down in Grove Road, at Stop H (1422 - Mile End Station <>/ Bow Road, Last Stop on LOR: 1422 - Mile End Station <>/ Bow Road) and pick up in Grove Road (14483 - Lichfield Road, First Stop on LOR: 14483 - Lichfield Road).

|                         |   |
|-------------------------|---|
| AVAILABILITY:           | At any time.                                    |
| OPERATING RESTRICTIONS: | Unscheduled curtailments only.                  |
| MEAL RELIEFS:           | No meal relief vehicles to stand at any time.   |
| FERRY VEHICLES:         | No ferry vehicles to park on stand at any time. |
| BLIND DISPLAY:          | Mile End.                                       |

## **LIMEHOUSE, BURDETT ROAD**

Private stand for two buses in bus station at the junction of East India Dock Road and Burdett Road, commencing 20 metres east of eastern kerblines of Burdett Road and extending 30 metres south.

### From Crossharbour, Asda.

Buses proceed from West India Dock Road via East India Dock Road and Limehouse Bus Station to stand, departing via Limehouse Bus Station to Burdett Road. Set down in Salter Street, at Stop WL (BP638 - Salter Street, Last Stop on LOR: BP638 - Salter Street) and pick up in Burdett Road, at Stop WR (R0780 - East India Dock Road, First Stop on LOR: R0780 - East India Dock Road).

### From Highbury & Islington Station.

Buses proceed from Burdett Road via East India Dock Road and Limehouse Bus Station to stand, departing via Limehouse Bus Station to Burdett Road. Set down in Burdett Road, at Stop WR (R0780 - East India Dock Road, Last Stop on LOR: R0780 - East India Dock Road) and pick up in Burdett Road, at Stop WO (25270 - East India Dock Road, First Stop on LOR: 25270 - East India Dock Road).

|                         |   |
|-------------------------|---|
| AVAILABILITY:           | At any time.                                    |
| OPERATING RESTRICTIONS: | Unscheduled curtailments only.                  |
| MEAL RELIEFS:           | No meal relief vehicles to stand at any time.   |
| FERRY VEHICLES:         | No ferry vehicles to park on stand at any time. |
| BLIND DISPLAY:          | Limehouse, Burdett Road.                        |

## **CANARY WHARF, TRAFALGAR WAY (from Highbury & Islington Station)**

Public stand for up to two buses on southbound carriageway of Trafalgar Way, 149 metres south of Broadwalk Place and 204 metres north of Cartier Circle.

Buses proceed from Trafalgar Way direct to stand, departing via Trafalgar Way, Cartier Circle, Churchill Place and The South Colonnade to Canada Square (South). Set down in Trafalgar Way (LE235 - Billingsgate Market, Last Stop on LOR: LE235 - Billingsgate Market) and pick up in Canada Square, at Stop J (R0314 - Canada Square South, First Stop on LOR: R0314 - Canada Square South).

|                         |   |
|-------------------------|---|
| AVAILABILITY:           | At any time.                                    |
| OPERATING RESTRICTIONS: | Unscheduled curtailments only.                  |
| MEAL RELIEFS:           | No meal relief vehicles to stand at any time.   |
| FERRY VEHICLES:         | No ferry vehicles to park on stand at any time. |
| BLIND DISPLAY:          | Canary Wharf.                                   |

## **CROSSHARBOUR, ASDA**

Private stand for 5 buses in marked bays in Asda car park.

Additional overflow stand for 2 buses on west side of East Ferry Road, between entrance and exit of Asda store.

Buses proceed from Asda Access Road direct to stand, departing to Asda Access Road. Set down in Asda Access Road (OC673 - Isle Of Dogs Asda, Last Stop on LOR: BP3588 - Canada Square North) and pick up in Asda Access Road, at Stop CE (R0752 - Crossharbour Asda, First Stop on LOR: LE193 - Westferry Circus).

|                         |   |
|-------------------------|---|
| AVAILABILITY:           | At any time.  |
| OPERATING RESTRICTIONS: | No more than 2 buses on Route 277 should be scheduled to stand at any one time. |
| MEAL RELIEFS:           | No meal relief vehicles to stand at any time.                                   |
| FERRY VEHICLES:         | No ferry vehicles to park on stand at any time.                                 |
| BLIND DISPLAY:          | Crossharbour.   |

# LONDON BUSES - ROUTE DESCRIPTION

## ROUTE 277: Dalston Junction Bus Station - Crossharbour, Asda

**Date of Structural Change:** 25 February 2017.

**Date of Service Change:** 25 February 2017.

**Reason for Issue:** New Tender.

### **STREETS TRAVERSED**

**Towards Crossharbour, Asda:** Dalston Junction Bus Station, Kingsland Road, Dalston Lane, Graham Road, Mare Street, Well Street, Cassland Road, Terrace Road, Church Crescent, Lauriston Road, Grove Road, Burdett Road, West India Dock Road, Westferry Road, Westferry Circus (Upper Level), West India Avenue, Cabot Square (North Side), The North Colonnade, Canada Square (North Side), The South Colonnade, Cabot Square, West India Avenue, Westferry Circus (Upper Level), West India Avenue, Cabot Square, The North Colonnade, Canada Square, The South Colonnade, Cabot Square, West India Avenue, Westferry Circus (Upper Level), Westferry Road, East Ferry Road, Asda Access Road.

**Towards Dalston Junction Bus Station:** Asda Access Road, East Ferry Road, Westferry Road, Westferry Circus (Upper Level), West India Avenue, Cabot Square (South Side), The North Colonnade, Canada Square (South Side), The South Colonnade, Cabot Square, West India Avenue, Westferry Circus (Upper Level), Westferry Road, Trinidad Street, Salter Street, West India Dock Road, Burdett Road, Grove Road, Lauriston Road, Well Street, Mare Street, Graham Road, Dalston Lane, Kingsland Road, Forest Road.



## **AUTHORISED STANDS, CURTAILMENT POINTS, & BLIND DESCRIPTIONS**

Please note that only stands, curtailment points, & blind descriptions as detailed in this contractual document may be used.

### **DALSTON JUNCTION, BUS STATION**

Private stand for 6 buses in bus station.

Buses proceed from Kingsland Road via Forest Road and Dalston Junction Bus Station to stand, departing to Dalston Junction Bus Station. Set down in Kingsland Road, at Stop D (2095 - Kingsland Road / Forest Road, Last Stop on LOR: 320 - Dalston Junction #) and pick up in Dalston Junction Bus Station, at Stop N (BP5617 - Dalston Junction #, First Stop on LOR: 14219 - Dalston Lane / Dalston Junction Station #).

|                         |   |
|-------------------------|---|
| AVAILABILITY:           | At any time.  |
| OPERATING RESTRICTIONS: | No more than 2 buses on Route 277 should be scheduled to stand at any one time. |
| MEAL RELIEFS:           | No meal relief vehicles to stand at any time.                                   |
| FERRY VEHICLES:         | No ferry vehicles to park on stand at any time.                                 |
| BLIND DISPLAY:          | Dalston Junction.   |
| OTHER INFORMATION:      | Toilet facilities available at Dalston Junction bus station.                    |

### **MILDMAY PARK (from CROSSHARBOUR, ASDA)**

Public stand for three buses on south side of Dove Road, commencing at a point 52.4 metres east of Essex Road and extending 38.8 metres east.

Buses proceed from Balls Pond Road via Southgate Road and Dove Road to stand, departing via Dove Road and Essex Road to Balls Pond Road. Set down in Balls Pond Road, at Stop BH (913 - Southgate Road, Last Stop on LOR: 913 - Southgate Road) and pick up in Balls Pond Road, at Stop CC (2638 - Mildmay Park / Southgate Road, First Stop on LOR: 2638 - Mildmay Park / Southgate Road).

|                         |   |
|-------------------------|---|
| AVAILABILITY:           | At any time.                                    |
| OPERATING RESTRICTIONS: | Unscheduled curtailments only.                  |
| MEAL RELIEFS:           | No meal relief vehicles to stand at any time.   |
| FERRY VEHICLES:         | No ferry vehicles to park on stand at any time. |
| BLIND DISPLAY:          | Mildmay Park.                                   |

## **HACKNEY WELL STREET (from CROSSHARBOUR, ASDA)**

Buses proceed from Well Street via Mare Street and Bush Road to stand, departing via Bush Road, Sheep Lane, Westgate Street, The Triangle and Mare Street to Well Street. Set down in Well Street, at Stop LX (25446 - Shore Road, Last Stop on LOR: 25446 - Shore Road) and pick up in Well Street, at Stop LW (25445 - Shore Road, First Stop on LOR: 25445 - Shore Road).

AVAILABILITY: At any time.  
OPERATING RESTRICTIONS: Unscheduled curtailments only  
MEAL RELIEFS: No meal relief vehicles to stand at any time.  
FERRY VEHICLES: No ferry vehicles to park on stand at any time.  
BLIND DISPLAY: Hackney Well Street.

## **LAURISTON ROAD, CHURCH CRESCENT**

Public off side stand for one bus on west side of Church Crescent commencing 11 metres north of lamp standard Z2 extending 13 metres north.

### From Crossharbour, Asda.

Buses proceed from Lauriston Road via Church Crescent to stand, departing via Church Crescent to Lauriston Road. Set down in Lauriston Road, at Stop Q (14470 - Moulins Road, Last Stop on LOR: 14470 - Moulins Road) and pick up in Lauriston Road, at Stop W (14474 - Penshurst Road, First Stop on LOR: 14474 - Penshurst Road).

### From Dalston Junction Bus Station.

Buses proceed from Church Crescent direct to stand, departing via Church Crescent to Lauriston Road. Set down in Church Crescent, at Stop V (BP4167 - Church Crescent, Last Stop on LOR: BP4167 - Church Crescent) and pick up in Lauriston Road, at Stop Q (14470 - Moulins Road, First Stop on LOR: 14470 - Moulins Road).

AVAILABILITY: At any time.  
OPERATING RESTRICTIONS: Unscheduled curtailments only.  
MEAL RELIEFS: No meal relief vehicles to stand at any time.  
FERRY VEHICLES: No ferry vehicles to park on stand at any time.  
BLIND DISPLAY: South Hackney, Church Crescent.

## **MILE END STATION, GROVE ROAD**

Private stand for six buses in bus station on west side of Grove Road, commencing 55 metres north of Mile End Road and extending 30 metres on offside and 30 metres on nearside.

### From Crossharbour, Asda.

Buses proceed from Burdett Road via Grove Road and Mile End Bus Station to stand, departing via Mile End Bus Station to Grove Road. Set down in Burdett Road, at Stop B (1423 - Mile End Station <>, Last Stop on LOR: 1423 - Mile End Station <>) and pick up in Grove Road, at Stop H (1422 - Mile End Station <>/ Bow Road, First Stop on LOR: 1422 - Mile End Station <>/ Bow Road).

### From Dalston Junction Bus Station.

Buses proceed from Grove Road via Mile End Bus Station to stand, departing via Mile End Bus Station to Grove Road. Set down in Grove Road, at Stop H (1422 - Mile End Station <>/ Bow Road, Last Stop on LOR: 1422 - Mile End Station <>/ Bow Road) and pick up in Grove Road (14483 - Lichfield Road, First Stop on LOR: 14483 - Lichfield Road).

|                         |   |
|-------------------------|---|
| AVAILABILITY:           | At any time.                                    |
| OPERATING RESTRICTIONS: | Unscheduled curtailments only.                  |
| MEAL RELIEFS:           | No meal relief vehicles to stand at any time.   |
| FERRY VEHICLES:         | No ferry vehicles to park on stand at any time. |
| BLIND DISPLAY:          | Mile End.                                       |

## **LIMEHOUSE, BURDETT ROAD**

Private stand for two buses in bus station at the junction of East India Dock Road and Burdett Road, commencing 20 metres east of eastern kerblines of Burdett Road and extending 30 metres south.

### From Crossharbour, Asda.

Buses proceed from West India Dock Road via East India Dock Road and Limehouse Bus Station to stand, departing via Limehouse Bus Station to Burdett Road. Set down in Salter Street, at Stop WL (BP638 - Salter Street, Last Stop on LOR: BP638 - Salter Street) and pick up in Burdett Road, at Stop WR (R0780 - East India Dock Road, First Stop on LOR: R0780 - East India Dock Road).

### From Dalston Junction Bus Station.

Buses proceed from Burdett Road via East India Dock Road and Limehouse Bus Station to stand, departing via Limehouse Bus Station to Burdett Road. Set down in Burdett Road, at Stop WR (R0780 - East India Dock Road, Last Stop on LOR: R0780 - East India Dock Road) and pick up in Burdett Road, at Stop WO (25270 - East India Dock Road, First Stop on LOR: 25270 - East India Dock Road).

|                         |   |
|-------------------------|---|
| AVAILABILITY:           | At any time.                                    |
| OPERATING RESTRICTIONS: | Unscheduled curtailments only.                  |
| MEAL RELIEFS:           | No meal relief vehicles to stand at any time.   |
| FERRY VEHICLES:         | No ferry vehicles to park on stand at any time. |
| BLIND DISPLAY:          | Limehouse, Burdett Road.                        |

## **CANARY WHARF, TRAFALGAR WAY (from Dalston Junction Bus Station)**

Public stand for up to two buses on southbound carriageway of Trafalgar Way, 149 metres south of Broadwalk Place and 204 metres north of Cartier Circle.

Buses proceed from Trafalgar Way direct to stand, departing via Trafalgar Way, Cartier Circle, Churchill Place and The South Colonnade to Canada Square (South). Set down in Trafalgar Way (LE235 - Billingsgate Market, Last Stop on LOR: LE235 - Billingsgate Market) and pick up in Canada Square, at Stop J (R0314 - Canada Square South, First Stop on LOR: R0314 - Canada Square South).

|                         |   |
|-------------------------|---|
| AVAILABILITY:           | At any time.                                    |
| OPERATING RESTRICTIONS: | Unscheduled curtailments only.                  |
| MEAL RELIEFS:           | No meal relief vehicles to stand at any time.   |
| FERRY VEHICLES:         | No ferry vehicles to park on stand at any time. |
| BLIND DISPLAY:          | Canary Wharf.                                   |

## **CROSSHARBOUR, ASDA**

Private stand for 5 buses in marked bays in Asda car park.

Additional overflow stand for 2 buses on west side of East Ferry Road, between entrance and exit of Asda store.

Buses proceed from Asda Access Road direct to stand, departing to Asda Access Road. Set down in Asda Access Road, at alighting point (OC673 - Isle Of Dogs Asda, Last Stop on LOR: BP3588 - Canada Square North) and pick up in Asda Access Road, at Stop CE (R0752 - Crossharbour Asda, First Stop on LOR: LE193 - Westferry Circus).

|                         |   |
|-------------------------|---|
| AVAILABILITY:           | At any time.  |
| OPERATING RESTRICTIONS: | No more than 2 buses on Route 277 should be scheduled to stand at any one time. |
| MEAL RELIEFS:           | No meal relief vehicles to stand at any time.                                   |
| FERRY VEHICLES:         | No ferry vehicles to park on stand at any time.                                 |
| BLIND DISPLAY:          | Crossharbour.   |

## LONDON BUSES - ROUTE DESCRIPTION

### ROUTE N277: Islington, Angel, White Lion Street - Crossharbour, Asda

**Date of Structural Change:** 25 February 2017.

**Date of Service Change:** 25 February 2017.

**Reason for Issue:** New Contract.

#### **STREETS TRAVERSED**

**Towards Crossharbour, Asda:** White Lion Street, Islington High Street, Upper Street, Highbury Corner, St Paul's Road, Balls Pond Road, Dalston Lane, Graham Road, Mare Street, Well Street, Cassland Road, Terrace Road, Church Crescent, Lauriston Road, Grove Road, Burdett Road, West India Dock Road, Westferry Road, Westferry Circus (Upper Level), West India Avenue, Cabot Square (North Side), The North Colonnade, Canada Square (North Side), The North Colonnade, Churchill Place, The South Colonnade, Canada Square, The South Colonnade, Cabot Square, West India Avenue, Westferry Circus (Upper Level), Westferry Road, East Ferry Road, Asda Access Road.

**Towards Islington, Angel, White Lion Street:** Asda Access Road, East Ferry Road, Westferry Road, Westferry Circus (Upper Level), West India Avenue, Cabot Square (South Side), The South Colonnade, Canada Square (South Side), The South Colonnade, Churchill Place, The North Colonnade, Canada Square, The North Colonnade, Cabot Square, West India Avenue, Westferry Circus (Upper Level), Westferry Road, Trinidad Street, Salter Street, West India Dock Road, Burdett Road, Grove Road, Lauriston Road, Well Street, Mare Street, Graham Road, Dalston Lane, Balls Pond Road, St Paul's Road, Highbury Corner, Upper Street, Islington High Street, Pentonville Road, Baron Street, White Lion Street.

## **AUTHORISED STANDS, CURTAILMENT POINTS, & BLIND DESCRIPTIONS**

Please note that only stands, curtailment points, & blind descriptions as detailed in this contractual document may be used.

### **ISLINGTON, ANGEL, WHITE LION STREET**

Stand on north side of White Lion Street.

Buses proceed from Baron Street via White Lion Street to stand, departing to White Lion Street. Set down in Baron Street, at Stop T (9487 - Baron Street / Chapel Market and pick up in White Lion Street, at Stop U (9488 - White Lion Street).

|                         |  |
|-------------------------|--|
| AVAILABILITY:           | At any time.   |
| OPERATING RESTRICTIONS: | No more than 2 buses on Route N277 should be scheduled to stand at any one time. |
| MEAL RELIEFS:           | No meal relief vehicles to stand at any time.                                    |
| FERRY VEHICLES:         | No ferry vehicles to park on stand at any time.                                  |
| BLIND DISPLAY:          | Islington, Angel.  |

### **HIGHBURY & ISLINGTON STATION (from CROSSHARBOUR, ASDA)**

Public stand for two buses on east side of Highbury Corner commencing 37 metres south of the southern kerb line of St Paul's Road and extending 22 metres north.

Buses proceed from St Paul's Road direct to stand, departing via Highbury Corner to St Paul's Road. Set down in St Paul's Road, at Stop D (11470 - Highbury Corner and pick up in St Paul's Road, at Stop C (11469 - St Paul's Road / Highbury Corner).

|                         |   |
|-------------------------|---|
| AVAILABILITY:           | At any time.                                    |
| OPERATING RESTRICTIONS: | Unscheduled curtailments only                   |
| MEAL RELIEFS:           | No meal relief vehicles to stand at any time.   |
| FERRY VEHICLES:         | No ferry vehicles to park on stand at any time. |
| BLIND DISPLAY:          | Highbury & Islington.                           |

### **MILDMAY PARK (from CROSSHARBOUR, ASDA)**

Public stand for three buses on south side of Dove Road, commencing at a point 52.4 metres east of Essex Road and extending 38.8 metres east.

Buses proceed from Balls Pond Road via Southgate Road and Dove Road to stand, departing via Dove Road and Essex Road to Balls Pond Road. Set down in Balls Pond Road, at Stop BH (913 - Southgate Road and pick up in Balls Pond Road, at Stop CC (2638 - Mildmay Park / Southgate Road).

|                         |   |
|-------------------------|---|
| AVAILABILITY:           | At any time.                                    |
| OPERATING RESTRICTIONS: | Unscheduled curtailments only.                  |
| MEAL RELIEFS:           | No meal relief vehicles to stand at any time.   |
| FERRY VEHICLES:         | No ferry vehicles to park on stand at any time. |
| BLIND DISPLAY:          | Mildmay Park.                                   |

## **HACKNEY WELL STREET (from CROSSHARBOUR, ASDA)**

Buses proceed from Well Street via Mare Street and Bush Road to stand, departing via Bush Road, Sheep Lane, Westgate Street, The Triangle and Mare Street to Well Street. Set down in Well Street, at Stop LX (25446 - Shore Road and pick up in Well Street, at Stop LW (25445 - Shore Road.

|                         |   |
|-------------------------|---|
| AVAILABILITY:           | At any time.                                    |
| OPERATING RESTRICTIONS: | Unscheduled curtailments only                   |
| MEAL RELIEFS:           | No meal relief vehicles to stand at any time.   |
| FERRY VEHICLES:         | No ferry vehicles to park on stand at any time. |
| BLIND DISPLAY:          | Hackney Well Street.                            |

## **LAURISTON ROAD, CHURCH CRESCENT**

Public off side stand for one bus on west side of Church Crescent commencing 11 metres north of lamp standard Z2 extending 13 metres north.

### From Crossharbour, Asda.

Buses proceed from Lauriston Road via Church Crescent to stand, departing via Church Crescent to Lauriston Road. Set down in Lauriston Road, at Stop Q (14470 - Moulins Road and pick up in Lauriston Road, at Stop W (14474 - Penshurst Road.

### From Islington, Angel, White Lion Street.

Buses proceed from Church Crescent direct to stand, departing via Church Crescent to Lauriston Road. Set down in Church Crescent, at Stop V (BP4167 - Church Crescent and pick up in Lauriston Road, at Stop Q (14470 - Moulins Road.

|                         |   |
|-------------------------|---|
| AVAILABILITY:           | At any time.                                    |
| OPERATING RESTRICTIONS: | Unscheduled curtailments only.                  |
| MEAL RELIEFS:           | No meal relief vehicles to stand at any time.   |
| FERRY VEHICLES:         | No ferry vehicles to park on stand at any time. |
| BLIND DISPLAY:          | South Hackney, Church Crescent.                 |

## **MILE END STATION, GROVE ROAD**

Private stand for six buses in bus station on west side of Grove Road, commencing 55 metres north of Mile End Road and extending 30 metres on offside and 30 metres on nearside.

### From Crossharbour, Asda.

Buses proceed from Burdett Road via Grove Road and Mile End Bus Station to stand, departing via Mile End Bus Station to Grove Road. Set down in Burdett Road, at Stop B (1423 - Mile End Station <> and pick up in Grove Road, at Stop H (1422 - Mile End Station <>/ Bow Road.

### From Islington, Angel, White Lion Street.

Buses proceed from Grove Road via Mile End Bus Station to stand, departing via Mile End Bus Station to Grove Road. Set down in Grove Road, at Stop H (1422 - Mile End Station <>/ Bow Road and pick up in Grove Road (14483 - Lichfield Road.

|                         |   |
|-------------------------|---|
| AVAILABILITY:           | At any time.                                    |
| OPERATING RESTRICTIONS: | Unscheduled curtailments only.                  |
| MEAL RELIEFS:           | No meal relief vehicles to stand at any time.   |
| FERRY VEHICLES:         | No ferry vehicles to park on stand at any time. |
| BLIND DISPLAY:          | Mile End.                                       |

## **LIMEHOUSE, BURDETT ROAD**

Private stand for two buses in bus station at the junction of East India Dock Road and Burdett Road, commencing 20 metres east of eastern kerblines of Burdett Road and extending 30 metres south.

### From Crossharbour, Asda.

Buses proceed from West India Dock Road via East India Dock Road and Limehouse Bus Station to stand, departing via Limehouse Bus Station to Burdett Road. Set down in Salter Street, at Stop WL (BP638 - Salter Street and pick up in Burdett Road, at Stop WR (R0780 - East India Dock Road.

### From Islington, Angel, White Lion Street.

Buses proceed from Burdett Road via East India Dock Road and Limehouse Bus Station to stand, departing via Limehouse Bus Station to Burdett Road. Set down in Burdett Road, at Stop WR (R0780 - East India Dock Road and pick up in Burdett Road, at Stop WO (25270 - East India Dock Road.

|                         |   |
|-------------------------|---|
| AVAILABILITY:           | At any time.                                    |
| OPERATING RESTRICTIONS: | Unscheduled curtailments only.                  |
| MEAL RELIEFS:           | No meal relief vehicles to stand at any time.   |
| FERRY VEHICLES:         | No ferry vehicles to park on stand at any time. |
| BLIND DISPLAY:          | Limehouse, Burdett Road.                        |



### **CANARY WHARF, TRAFALGAR WAY (from Islington, Angel, White Lion Street)**

Public stand for up to two buses on southbound carriageway of Trafalgar Way, 149 metres south of Broadwalk Place and 204 metres north of Cartier Circle.

Buses proceed from Trafalgar Way direct to stand, departing via Trafalgar Way, Cartier Circle, Churchill Place and The South Colonnade to Canada Square (South). Set down in Trafalgar Way (LE235 - Billingsgate Market and pick up in Canada Square, at Stop J (R0314 - Canada Square South).

|                         |   |
|-------------------------|---|
| AVAILABILITY:           | At any time.                                    |
| OPERATING RESTRICTIONS: | Unscheduled curtailments only.                  |
| MEAL RELIEFS:           | No meal relief vehicles to stand at any time.   |
| FERRY VEHICLES:         | No ferry vehicles to park on stand at any time. |
| BLIND DISPLAY:          | Canary Wharf.                                   |

### **CROSSHARBOUR, ASDA**

Private stand for 5 buses in marked bays in Asda car park.

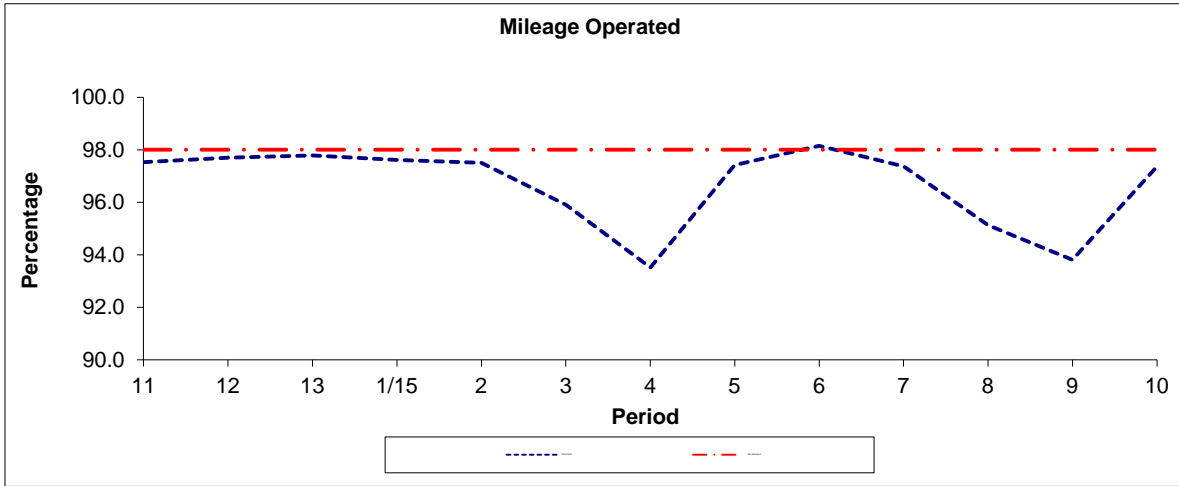
Additional overflow stand for 2 buses on west side of East Ferry Road, between entrance and exit of Asda store.

Buses proceed from Asda Access Road direct to stand, departing to Asda Access Road. Set down in Asda Access Road (OC673 - Isle Of Dogs Asda and pick up in Asda Access Road, at Stop CE (R0752 - Crossharbour Asda).

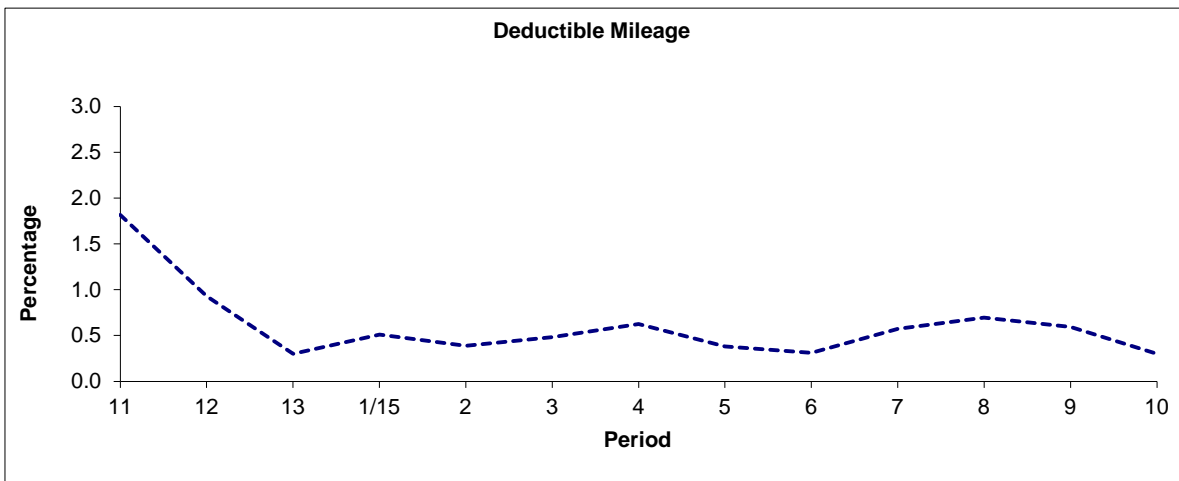
|                         |  |
|-------------------------|--|
| AVAILABILITY:           | At any time.   |
| OPERATING RESTRICTIONS: | No more than 2 buses on Route N277 should be scheduled to stand at any one time. |
| MEAL RELIEFS:           | No meal relief vehicles to stand at any time.                                    |
| FERRY VEHICLES:         | No ferry vehicles to park on stand at any time.                                  |
| BLIND DISPLAY:          | Crossharbour.  |

**PART B - PERFORMANCE STATISTICS**

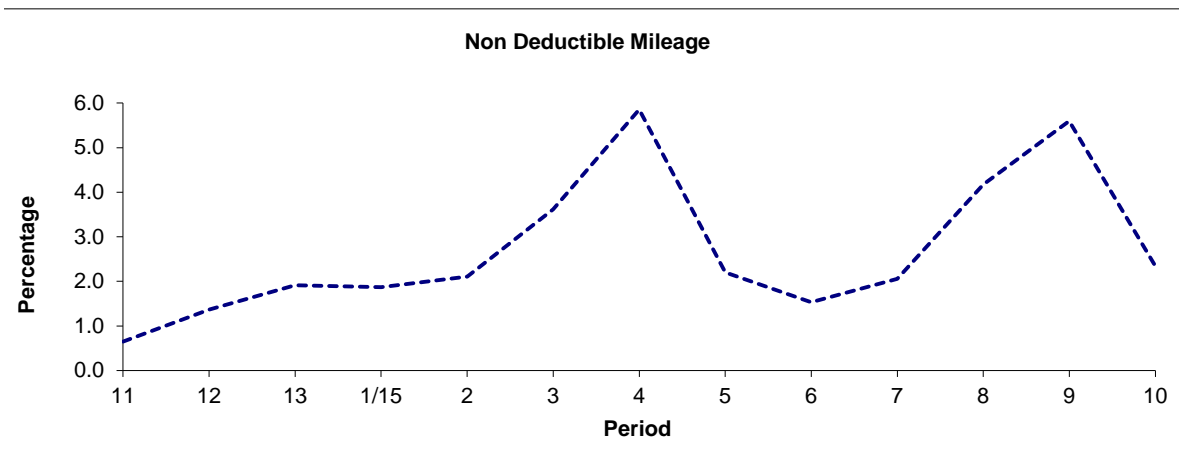
**Route 277**



| Period       | 11    | 12    | 13    | 1/15  | 2     | 3     | 4     | 5     | 6     | 7     | 8     | 9     | 10    |
|--------------|-------|-------|-------|-------|-------|-------|-------|-------|-------|-------|-------|-------|-------|
| 2014/2015    | 97.53 | 97.71 | 97.79 | 97.62 | 97.50 | 95.90 | 93.52 | 97.42 | 98.16 | 97.37 | 95.13 | 93.81 | 97.35 |
| Min Standard | 98.00 | 98.00 | 98.00 | 98.00 | 98.00 | 98.00 | 98.00 | 98.00 | 98.00 | 98.00 | 98.00 | 98.00 | 98.00 |



| Period    | 11   | 12   | 13   | 1/15 | 2    | 3    | 4    | 5    | 6    | 7    | 8    | 9    | 10   |
|-----------|------|------|------|------|------|------|------|------|------|------|------|------|------|
| 2014/2015 | 1.82 | 0.93 | 0.30 | 0.51 | 0.39 | 0.48 | 0.63 | 0.38 | 0.31 | 0.57 | 0.69 | 0.59 | 0.30 |

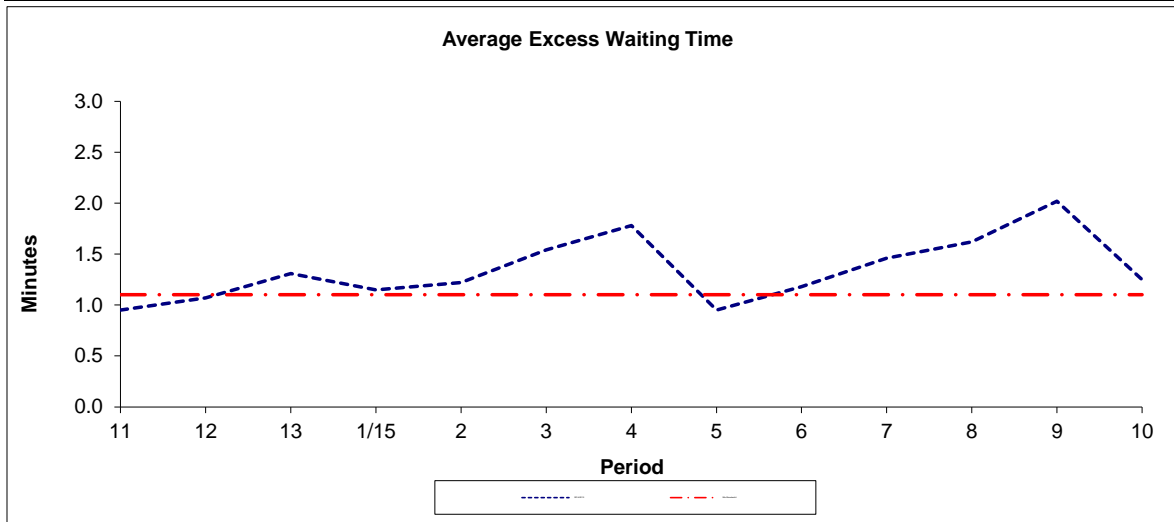


| Period    | 11   | 12   | 13   | 1/15 | 2    | 3    | 4    | 5    | 6    | 7    | 8    | 9    | 10   |
|-----------|------|------|------|------|------|------|------|------|------|------|------|------|------|
| 2014/2015 | 0.65 | 1.36 | 1.91 | 1.87 | 2.11 | 3.61 | 5.85 | 2.20 | 1.53 | 2.06 | 4.18 | 5.60 | 2.35 |

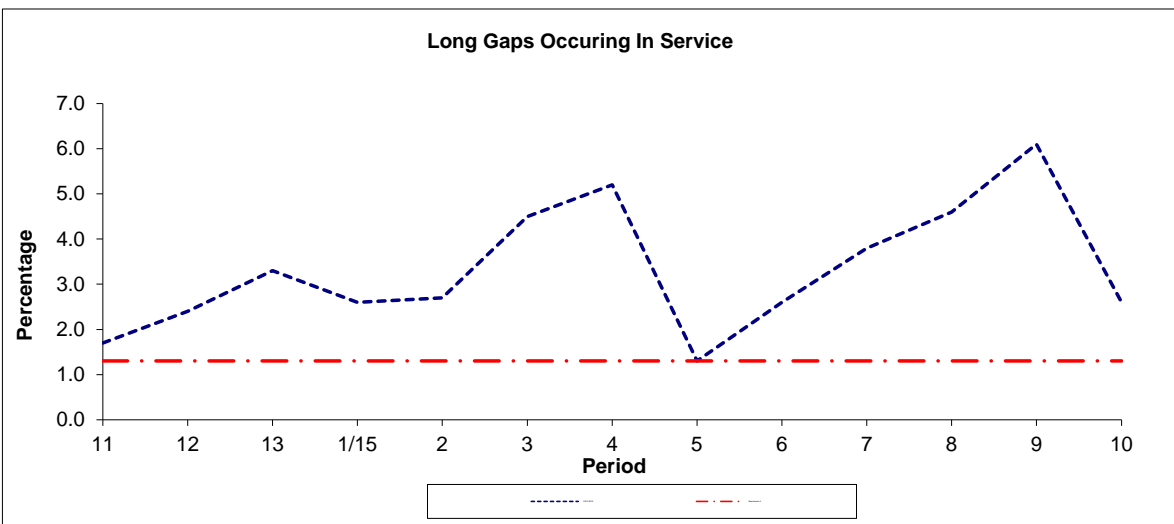
**Note :** Mileage is based on 4 weeks data  
 Deductible Mileage was adversely affected by industrial action in periods 11 and 12 14/15.

**PART B - PERFORMANCE STATISTICS**

**Route 277**



| Period         | 11   | 12   | 13   | 1/15 | 2    | 3    | 4    | 5    | 6    | 7    | 8    | 9    | 10   |
|----------------|------|------|------|------|------|------|------|------|------|------|------|------|------|
| 2014-2015      | 0.95 | 1.07 | 1.31 | 1.15 | 1.22 | 1.54 | 1.78 | 0.95 | 1.18 | 1.46 | 1.62 | 2.02 | 1.25 |
| Min Standard # | 1.10 | 1.10 | 1.10 | 1.10 | 1.10 | 1.10 | 1.10 | 1.10 | 1.10 | 1.10 | 1.10 | 1.10 | 1.10 |

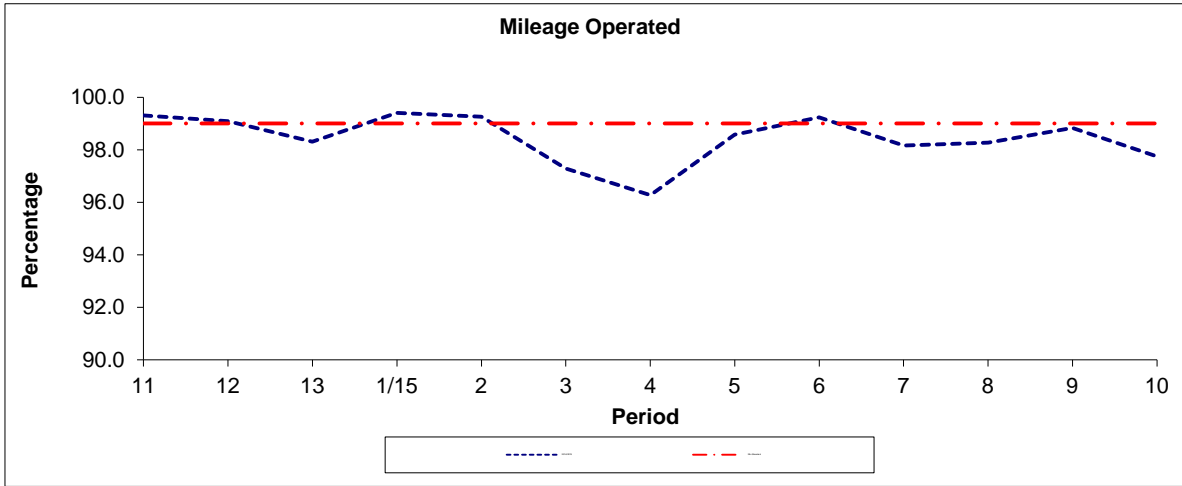


| Period      | 11  | 12  | 13  | 1/15 | 2   | 3   | 4   | 5   | 6   | 7   | 8   | 9   | 10  |
|-------------|-----|-----|-----|------|-----|-----|-----|-----|-----|-----|-----|-----|-----|
| 2014-2015   | 1.7 | 2.4 | 3.3 | 2.6  | 2.7 | 4.5 | 5.2 | 1.3 | 2.6 | 3.8 | 4.6 | 6.1 | 2.6 |
| Benchmark # | 1.3 | 1.3 | 1.3 | 1.3  | 1.3 | 1.3 | 1.3 | 1.3 | 1.3 | 1.3 | 1.3 | 1.3 | 1.3 |

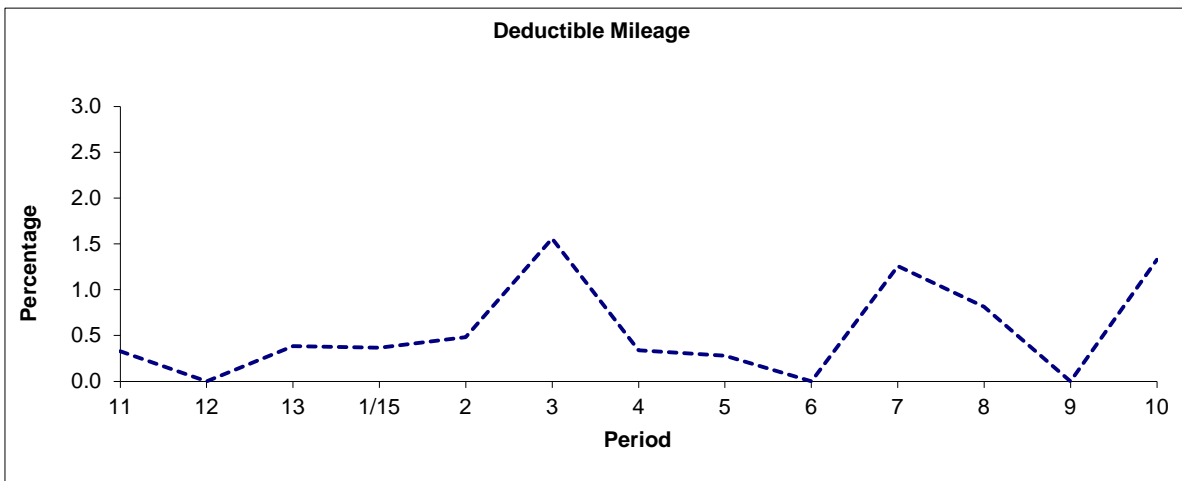
**Note :** Reliability is actual performance under full iBus (4 weeks data).  
 # Minimum Standards and Benchmarks are those applicable under the new contract (options 1 and 2).

**PART B - PERFORMANCE STATISTICS**

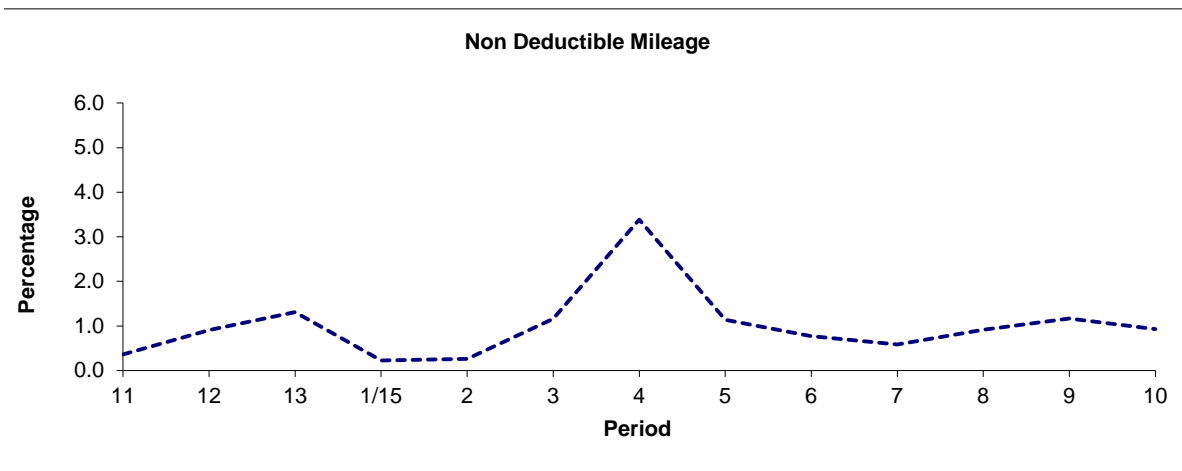
**Route N277**



| Period       | 11    | 12    | 13    | 1/15  | 2     | 3     | 4     | 5     | 6     | 7     | 8     | 9     | 10    |
|--------------|-------|-------|-------|-------|-------|-------|-------|-------|-------|-------|-------|-------|-------|
| 2014/2015    | 99.31 | 99.09 | 98.31 | 99.41 | 99.26 | 97.29 | 96.27 | 98.58 | 99.23 | 98.16 | 98.27 | 98.83 | 97.75 |
| Min Standard | 99.00 | 99.00 | 99.00 | 99.00 | 99.00 | 99.00 | 99.00 | 99.00 | 99.00 | 99.00 | 99.00 | 99.00 | 99.00 |



| Period    | 11   | 12   | 13   | 1/15 | 2    | 3    | 4    | 5    | 6    | 7    | 8    | 9    | 10   |
|-----------|------|------|------|------|------|------|------|------|------|------|------|------|------|
| 2014/2015 | 0.33 | 0.00 | 0.38 | 0.37 | 0.48 | 1.56 | 0.34 | 0.28 | 0.00 | 1.26 | 0.82 | 0.00 | 1.33 |

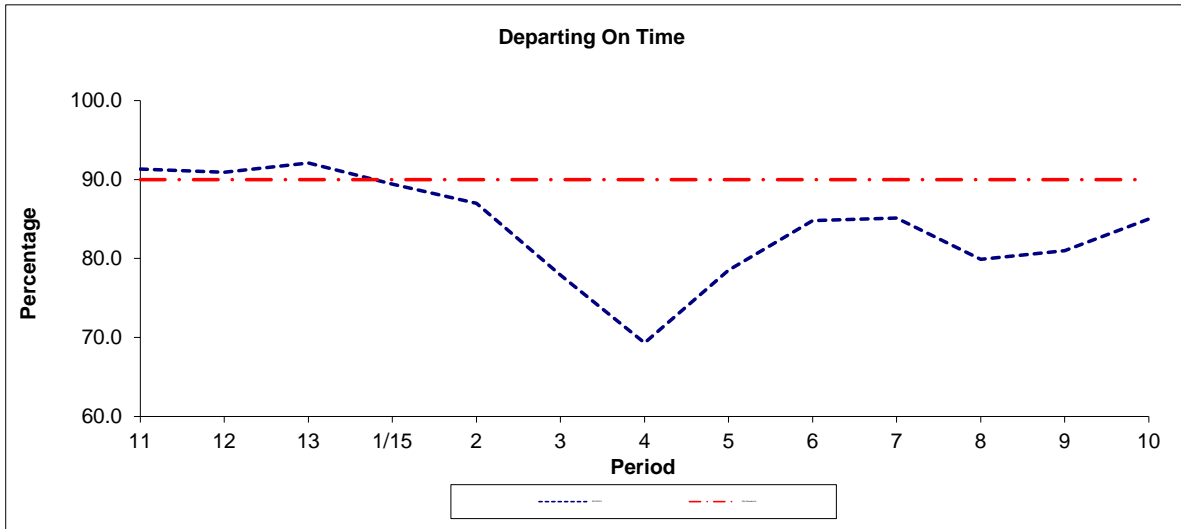


| Period    | 11   | 12   | 13   | 1/15 | 2    | 3    | 4    | 5    | 6    | 7    | 8    | 9    | 10   |
|-----------|------|------|------|------|------|------|------|------|------|------|------|------|------|
| 2014/2015 | 0.36 | 0.91 | 1.31 | 0.22 | 0.26 | 1.16 | 3.39 | 1.14 | 0.77 | 0.58 | 0.91 | 1.17 | 0.93 |

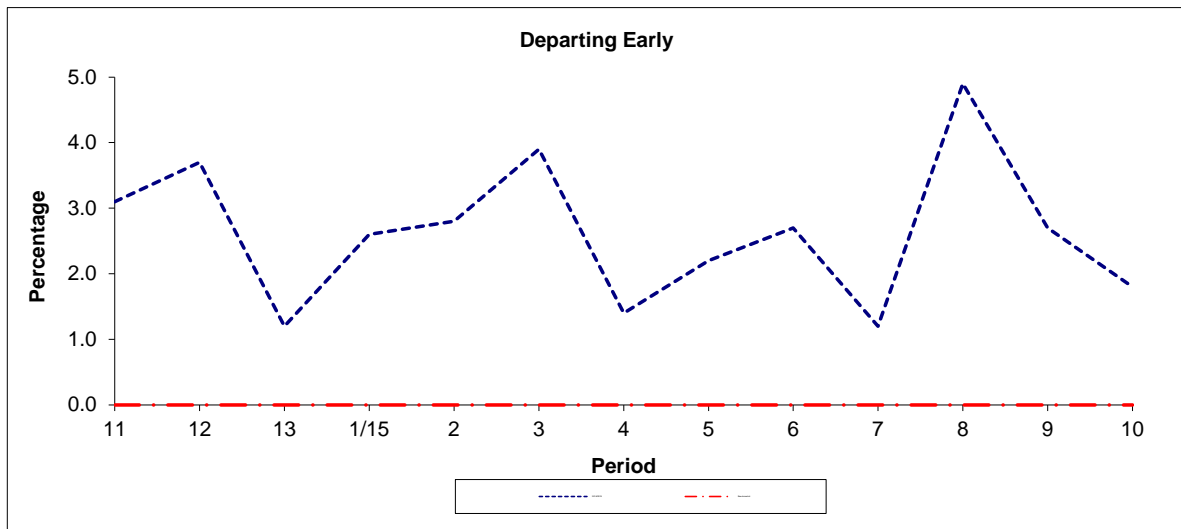
**Note :** Mileage is based on 4 weeks data

**PART B - PERFORMANCE STATISTICS**

**Route N277**



| Period         | 11   | 12   | 13   | 1/15 | 2    | 3    | 4    | 5    | 6    | 7    | 8    | 9    | 10   |
|----------------|------|------|------|------|------|------|------|------|------|------|------|------|------|
| 2014/2015      | 91.3 | 90.9 | 92.1 | 89.4 | 87.0 | 77.9 | 69.3 | 78.5 | 84.8 | 85.1 | 79.9 | 81.0 | 85.0 |
| Min Standard # | 90.0 | 90.0 | 90.0 | 90.0 | 90.0 | 90.0 | 90.0 | 90.0 | 90.0 | 90.0 | 90.0 | 90.0 | 90.0 |



| Period      | 11   | 12   | 13   | 1/15 | 2    | 3    | 4    | 5    | 6    | 7    | 8    | 9    | 10   |
|-------------|------|------|------|------|------|------|------|------|------|------|------|------|------|
| 2014/2015   | 3.10 | 3.70 | 1.20 | 2.60 | 2.80 | 3.90 | 1.40 | 2.20 | 2.70 | 1.20 | 4.90 | 2.70 | 1.80 |
| Benchmark # | 0.00 | 0.00 | 0.00 | 0.00 | 0.00 | 0.00 | 0.00 | 0.00 | 0.00 | 0.00 | 0.00 | 0.00 | 0.00 |

**Note :** Reliability is actual performance under full iBus (4 weeks data).  
 # Minimum Standards and Benchmarks are those applicable under the new contract (options 1 and 2).

**ROUTE 277 - FULL iBUS RESULTS BY TIME OF DAY  
 QUARTER 4 14/15 TO QUARTER 3 15/16 (03/01/15 - 08/01/16)**

**MONDAY - FRIDAY**

| Time Range       | Expected Buses  | Observed Buses  | Observed Buses (%) | SWT (mins)  | EWT (mins)  | AWT (mins)  | Probability of Waiting < 10 mins (%) | Probability of Waiting 10-20 mins (%) | Probability of Waiting 20-30 mins (%) | Probability of Waiting > 30 mins (%) | Long Gaps (%) | Maximum Gap (mins) |
|------------------|-----------------|-----------------|--------------------|-------------|-------------|-------------|--------------------------------------|---------------------------------------|---------------------------------------|--------------------------------------|---------------|--------------------|
| 05:00 - 07:00    | 39,186.         | 38,707.         | 98.8               | 5.01        | <b>0.81</b> | 5.82        | 85.2                                 | 14.2                                  | 0.6                                   | 0.1                                  | 0.7           | 43                 |
| 07:00 - 10:00    | 93,798.         | 90,662.         | 96.7               | 3.36        | <b>1.23</b> | 4.59        | 91.1                                 | 8.4                                   | 0.4                                   | 0.1                                  | 3.1           | 80                 |
| 10:00 - 13:00    | 93,228.         | 91,844.         | 98.5               | 3.34        | <b>1.05</b> | 4.39        | 93.0                                 | 6.7                                   | 0.2                                   | 0.0                                  | 2.2           | 56                 |
| 13:00 - 16:00    | 93,683.         | 91,203.         | 97.4               | 3.30        | <b>1.21</b> | 4.51        | 91.1                                 | 8.3                                   | 0.5                                   | 0.1                                  | 3.5           | 48                 |
| 16:00 - 19:00    | 88,345.         | 83,860.         | 94.9               | 3.47        | <b>1.82</b> | 5.29        | 86.0                                 | 12.2                                  | 1.5                                   | 0.3                                  | 6.1           | 56                 |
| 19:00 - 22:00    | 74,384.         | 71,855.         | 96.6               | 4.03        | <b>1.28</b> | 5.32        | 86.7                                 | 12.4                                  | 0.7                                   | 0.2                                  | 2.7           | 72                 |
| 22:00 - 24:00    | 40,096.         | 39,334.         | 98.1               | 4.95        | <b>1.26</b> | 6.21        | 81.1                                 | 17.4                                  | 1.3                                   | 0.2                                  | 1.6           | 62                 |
| <b>Locations</b> | <b>522,720.</b> | <b>507,465.</b> | <b>97.1</b>        | <b>3.57</b> | <b>1.33</b> | <b>4.90</b> | <b>89.1</b>                          | <b>10.0</b>                           | <b>0.7</b>                            | <b>0.2</b>                           | <b>3.5</b>    | <b>80</b>          |

**SATURDAY**

| Time Range       | Expected Buses  | Observed Buses | Observed Buses (%) | SWT (mins)  | EWT (mins)  | AWT (mins)  | Probability of Waiting < 10 mins (%) | Probability of Waiting 10-20 mins (%) | Probability of Waiting 20-30 mins (%) | Probability of Waiting > 30 mins (%) | Long Gaps (%) | Maximum Gap (mins) |
|------------------|-----------------|----------------|--------------------|-------------|-------------|-------------|--------------------------------------|---------------------------------------|---------------------------------------|--------------------------------------|---------------|--------------------|
| 05:00 - 07:00    | 5,528.          | 5,250.         | 95.0               | 7.18        | <b>1.21</b> | 8.38        | 66.2                                 | 29.5                                  | 3.7                                   | 0.6                                  | 0.8           | 49                 |
| 07:00 - 10:00    | 15,917.         | 15,381.        | 96.6               | 4.02        | <b>1.38</b> | 5.40        | 86.9                                 | 12.2                                  | 0.7                                   | 0.1                                  | 2.4           | 56                 |
| 10:00 - 13:00    | 19,186.         | 19,088.        | 99.5               | 3.34        | <b>0.88</b> | 4.22        | 94.4                                 | 5.5                                   | 0.1                                   | 0.0                                  | 1.4           | 30                 |
| 13:00 - 16:00    | 19,134.         | 18,594.        | 97.2               | 3.35        | <b>1.31</b> | 4.66        | 90.7                                 | 8.4                                   | 0.8                                   | 0.1                                  | 3.6           | 44                 |
| 16:00 - 19:00    | 18,946.         | 17,871.        | 94.3               | 3.38        | <b>1.52</b> | 4.90        | 88.8                                 | 9.9                                   | 1.0                                   | 0.3                                  | 4.7           | 44                 |
| 19:00 - 22:00    | 13,770.         | 13,412.        | 97.4               | 4.48        | <b>1.99</b> | 6.46        | 78.0                                 | 18.8                                  | 2.7                                   | 0.4                                  | 5.1           | 46                 |
| 22:00 - 24:00    | 8,232.          | 7,771.         | 94.4               | 5.00        | <b>1.83</b> | 6.83        | 76.5                                 | 19.3                                  | 3.1                                   | 1.1                                  | 4.2           | 68                 |
| <b>Locations</b> | <b>100,713.</b> | <b>97,367.</b> | <b>96.7</b>        | <b>3.77</b> | <b>1.39</b> | <b>5.16</b> | <b>87.5</b>                          | <b>11.1</b>                           | <b>1.1</b>                            | <b>0.2</b>                           | <b>3.4</b>    | <b>68</b>          |

**SUNDAY AND BANK HOLIDAYS**

| Time Range       | Expected Buses | Observed Buses | Observed Buses (%) | SWT (mins)  | EWT (mins)  | AWT (mins)  | Probability of Waiting < 10 mins (%) | Probability of Waiting 10-20 mins (%) | Probability of Waiting 20-30 mins (%) | Probability of Waiting > 30 mins (%) | Long Gaps (%) | Maximum Gap (mins) |
|------------------|----------------|----------------|--------------------|-------------|-------------|-------------|--------------------------------------|---------------------------------------|---------------------------------------|--------------------------------------|---------------|--------------------|
| 05:00 - 07:00    | 6,011.         | 5,686.         | 94.6               | 7.49        | <b>1.29</b> | 8.79        | 60.9                                 | 32.0                                  | 5.8                                   | 1.3                                  | 1.3           | 57                 |
| 07:00 - 10:00    | 11,967.        | 11,604.        | 97.0               | 5.76        | <b>1.65</b> | 7.41        | 74.5                                 | 22.2                                  | 3.1                                   | 0.3                                  | 1.5           | 60                 |
| 10:00 - 13:00    | 14,008.        | 13,662.        | 97.5               | 4.98        | <b>1.11</b> | 6.09        | 82.7                                 | 15.8                                  | 1.4                                   | 0.2                                  | 1.5           | 52                 |
| 13:00 - 16:00    | 14,163.        | 13,800.        | 97.4               | 5.00        | <b>1.43</b> | 6.43        | 78.9                                 | 18.9                                  | 2.0                                   | 0.3                                  | 2.2           | 47                 |
| 16:00 - 19:00    | 14,557.        | 13,628.        | 93.6               | 4.97        | <b>2.15</b> | 7.12        | 74.0                                 | 22.2                                  | 3.2                                   | 0.5                                  | 3.7           | 58                 |
| 19:00 - 22:00    | 14,450.        | 14,114.        | 97.7               | 4.99        | <b>1.88</b> | 6.87        | 76.1                                 | 20.8                                  | 2.7                                   | 0.4                                  | 3.0           | 62                 |
| 22:00 - 24:00    | 9,829.         | 9,537.         | 97.0               | 4.90        | <b>1.26</b> | 6.15        | 82.1                                 | 16.4                                  | 1.4                                   | 0.2                                  | 1.7           | 59                 |
| <b>Locations</b> | <b>84,985.</b> | <b>82,031.</b> | <b>96.5</b>        | <b>5.12</b> | <b>1.60</b> | <b>6.71</b> | <b>77.5</b>                          | <b>19.8</b>                           | <b>2.4</b>                            | <b>0.3</b>                           | <b>2.4</b>    | <b>62</b>          |

**ALL DAYS**

| Time Range       | Expected Buses  | Observed Buses  | Observed Buses (%) | SWT (mins)  | EWT (mins)  | AWT (mins)  | Probability of Waiting < 10 mins (%) | Probability of Waiting 10-20 mins (%) | Probability of Waiting 20-30 mins (%) | Probability of Waiting > 30 mins (%) | Long Gaps (%) | Maximum Gap (mins) |
|------------------|-----------------|-----------------|--------------------|-------------|-------------|-------------|--------------------------------------|---------------------------------------|---------------------------------------|--------------------------------------|---------------|--------------------|
| 05:00 - 07:00    | 50,725.         | 49,643.         | 97.9               | 5.40        | <b>0.88</b> | 6.28        | 81.6                                 | 16.9                                  | 1.3                                   | 0.2                                  | 0.7           | 57                 |
| 07:00 - 10:00    | 121,682.        | 117,647.        | 96.7               | 3.54        | <b>1.27</b> | 4.80        | 89.9                                 | 9.5                                   | 0.6                                   | 0.1                                  | 3.0           | 80                 |
| 10:00 - 13:00    | 126,422.        | 124,594.        | 98.6               | 3.54        | <b>1.03</b> | 4.58        | 91.9                                 | 7.7                                   | 0.4                                   | 0.1                                  | 2.0           | 56                 |
| 13:00 - 16:00    | 126,980.        | 123,597.        | 97.3               | 3.50        | <b>1.25</b> | 4.76        | 89.6                                 | 9.6                                   | 0.7                                   | 0.1                                  | 3.3           | 48                 |
| 16:00 - 19:00    | 121,848.        | 115,359.        | 94.7               | 3.61        | <b>1.82</b> | 5.43        | 85.1                                 | 12.9                                  | 1.6                                   | 0.4                                  | 5.7           | 58                 |
| 19:00 - 22:00    | 102,604.        | 99,381.         | 96.9               | 4.21        | <b>1.45</b> | 5.66        | 84.2                                 | 14.3                                  | 1.2                                   | 0.2                                  | 3.1           | 72                 |
| 22:00 - 24:00    | 58,157.         | 56,642.         | 97.4               | 4.95        | <b>1.35</b> | 6.30        | 80.5                                 | 17.6                                  | 1.6                                   | 0.3                                  | 2.0           | 68                 |
| <b>Locations</b> | <b>708,418.</b> | <b>686,863.</b> | <b>97.0</b>        | <b>3.75</b> | <b>1.36</b> | <b>5.11</b> | <b>87.7</b>                          | <b>11.1</b>                           | <b>0.9</b>                            | <b>0.2</b>                           | <b>3.4</b>    | <b>80</b>          |

**ROUTE N277 - FULL iBUS RESULTS BY TIME OF DAY**  
**QUARTER 4 14/15 TO QUARTER 3 15/16 (03/01/15 - 08/01/16)**

**MONDAY - FRIDAY**

| Time Range           | Expected Buses | Observed Buses | Observed Buses (%) | Linked Buses (%) | On Time (%) | Non Arrival / Not Linked (%) | Early (%)  | Late (%)   |
|----------------------|----------------|----------------|--------------------|------------------|-------------|------------------------------|------------|------------|
| 00:00 - 05:00        | 32,722.        | 32,027.        | 97.9               | 97.3             | 88.0        | 4.1                          | 2.6        | 5.4        |
| <b>All Locations</b> | <b>32,722.</b> | <b>32,027.</b> | <b>97.9</b>        | <b>97.3</b>      | <b>88.0</b> | <b>4.1</b>                   | <b>2.6</b> | <b>5.4</b> |

**SATURDAY**

| Time Range           | Expected Buses | Observed Buses | Observed Buses (%) | Linked Buses (%) | On Time (%) | Non Arrival / Not Linked (%) | Early (%)  | Late (%)   |
|----------------------|----------------|----------------|--------------------|------------------|-------------|------------------------------|------------|------------|
| 00:00 - 05:00        | 6,625.         | 6,413.         | 96.8               | 96.2             | 81.5        | 6.0                          | 2.9        | 9.5        |
| <b>All Locations</b> | <b>6,625.</b>  | <b>6,413.</b>  | <b>96.8</b>        | <b>96.2</b>      | <b>81.5</b> | <b>6.0</b>                   | <b>2.9</b> | <b>9.5</b> |

**SUNDAY AND BANK HOLIDAYS**

| Time Range           | Expected Buses | Observed Buses | Observed Buses (%) | Linked Buses (%) | On Time (%) | Non Arrival / Not Linked (%) | Early (%)  | Late (%)    |
|----------------------|----------------|----------------|--------------------|------------------|-------------|------------------------------|------------|-------------|
| 00:00 - 05:00        | 7,246.         | 6,904.         | 95.3               | 93.8             | 75.2        | 7.7                          | 2.5        | 14.6        |
| <b>All Locations</b> | <b>7,246.</b>  | <b>6,904.</b>  | <b>95.3</b>        | <b>93.8</b>      | <b>75.2</b> | <b>7.7</b>                   | <b>2.5</b> | <b>14.6</b> |

**ALL DAYS**

| Time Range           | Expected Buses | Observed Buses | Observed Buses (%) | Linked Buses (%) | On Time (%) | Non Arrival / Not Linked (%) | Early (%)  | Late (%)   |
|----------------------|----------------|----------------|--------------------|------------------|-------------|------------------------------|------------|------------|
| 00:00 - 05:00        | 46,593.        | 45,344.        | 97.3               | 96.6             | 83.5        | 5.4                          | 2.6        | 8.5        |
| <b>All Locations</b> | <b>46,593.</b> | <b>45,344.</b> | <b>97.3</b>        | <b>96.6</b>      | <b>83.5</b> | <b>5.4</b>                   | <b>2.6</b> | <b>8.5</b> |

Transport for London - QSI Points and Live Mileage List

v2.0 - Mileage directly imported from Caesar

**TRANCHE 552**

Route 277 and N277 (Option 1)

Option 1 : Rerouting to Crossharbour

Service change 28944

Date 12/01/2013

Reason for Issue

QSI Points are highlighted.

| OUT DIRECTION                       |             |                                      |        |       |
|-------------------------------------|-------------|--------------------------------------|--------|-------|
| Timing Point Code                   | Stop Number | Stop Name                            | Metres | Miles |
| HYISSN                              | 11469       | St Paul's Road / Highbury Corner     |        |       |
|                                     | 17293       | Highbury Grove                       | 226    | 0.14  |
|                                     | 17295       | Clephane Road                        | 533    | 0.33  |
|                                     | 908         | Newington Green Road / Essex Road    | 176    | 0.11  |
|                                     | 2638        | Mildmay Park / Southgate Road        | 239    | 0.15  |
|                                     | 2639        | Culford Road                         | 228    | 0.14  |
|                                     | 13506       | Dalston Junction Station             | 346    | 0.21  |
| DALSJC                              | 14219       | Dalston Lane / Dalston Junction      | 176    | 0.11  |
|                                     | 783         | Graham Road / Stannard Road          | 414    | 0.26  |
|                                     | 1114        | Greenwood Road                       | 272    | 0.17  |
|                                     | 2648        | Royal Oak Road                       | 261    | 0.16  |
| HCKCGR                              | 20997       | Mare Street                          | 316    | 0.20  |
|                                     | 307         | Hackney Town Hall                    | 204    | 0.13  |
|                                     | 2276        | St Thomas's Square                   | 328    | 0.20  |
|                                     | 25445       | Well Street / Shore Road             | 444    | 0.28  |
|                                     | 14466       | Holcroft Road                        | 294    | 0.18  |
|                                     | BP3699      | Terrace Road                         | 201    | 0.12  |
|                                     | BP4167      | Church Crescent                      | 153    | 0.10  |
| LAURCC                              | 14474       | Lauriston Road                       | 187    | 0.12  |
|                                     | 14476       | Victoria Park Road                   | 295    | 0.18  |
|                                     | 14478       | Victoria Park                        | 431    | 0.27  |
|                                     | 2955        | Roman Road                           | 281    | 0.17  |
|                                     | 18213       | St Barnabas Church                   | 165    | 0.10  |
|                                     | 14482       | Arbery Road                          | 206    | 0.13  |
|                                     | 14484       | Lichfield Road                       | 209    | 0.13  |
| MNSNGR                              | 1422        | Mile End Station / Bow Road          | 167    | 0.10  |
|                                     | 1424        | Mile End Station                     | 177    | 0.11  |
|                                     | 14488       | Eric Street                          | 448    | 0.28  |
|                                     | R0381       | Mile End Park Leisure Centre         | 182    | 0.11  |
|                                     | R0781       | St Paul's Way                        | 188    | 0.12  |
|                                     | 14496       | Pixley Street                        | 320    | 0.20  |
| LIMEBR                              | R0780       | East India Dock Road                 | 309    | 0.19  |
|                                     | 36875       | Limehouse Police Station             | 152    | 0.09  |
|                                     | 15128       | Westferry Station                    | 345    | 0.21  |
|                                     | LE186       | Cabot Square                         | 495    | 0.31  |
| CNWFSN                              | R0315       | Canary Wharf Station                 | 295    | 0.18  |
|                                     | BP3588      | Canada Square North                  | 214    | 0.13  |
|                                     | R0314       | Canada Square South                  |        |       |
|                                     | BP2355      | Canary Wharf Station                 |        |       |
|                                     | BP2356      | West India Avenue                    |        |       |
|                                     | 15130       | Marsh Wall / Heron Quay              |        |       |
| WFRYCS                              | 3200        | Cuba Street                          | 197    | 0.12  |
|                                     | 15132       | Barkantine Clinic / Hutchings Street | 269    | 0.17  |
|                                     | 15134       | Sir John McDougal Gardens            | 257    | 0.16  |
| MILLDB                              | 13418       | Arnhem Wharf Primary School          | 264    | 0.16  |
|                                     | 15136       | Crews Street / The Space Theatre     | 240    | 0.15  |
|                                     | 15138       | St Edmund's School                   | 231    | 0.14  |
|                                     | 15140       | Harbinger School                     | 232    | 0.14  |
|                                     | 16353       | Maconochies Road                     | 167    | 0.10  |
| IGNSWE                              | 15142       | East Ferry Road                      | 326    | 0.20  |
|                                     | BP2335      | Mudchute Station / Spindrift Ave     | 321    | 0.20  |
|                                     | BP5153      | Mudchute Station                     | 232    | 0.14  |
| CHBRAS                              | OC673       | Isle Of Dogs Asda                    | 480    | 0.30  |
| Total Route Mileage - Out Direction |             |                                      | 8.36   |       |
|                                     |             |                                      | Metres | Miles |

| BACK DIRECTION                       |             |                                      |        |       |
|--------------------------------------|-------------|--------------------------------------|--------|-------|
| Timing Point Code                    | Stop Number | Stop Name                            | Metres | Miles |
| CHBRAS                               | R0752       | Crossharbour Asda                    |        |       |
|                                      | BP5152      | Mudchute Station                     | 319    | 0.20  |
|                                      | 36868       | Millwall Park                        | 396    | 0.25  |
| IGNSWC                               | 15141       | Langbourne Place                     | 423    | 0.26  |
|                                      | 15139       | Harbinger School                     | 331    | 0.21  |
|                                      | 15137       | St Edmund's School                   | 304    | 0.19  |
|                                      | 15135       | Crews Street                         | 199    | 0.12  |
| MILLDB                               | 559         | Arnhem Wharf Primary School          | 220    | 0.14  |
|                                      | 15133       | Sir John McDougal Gardens            | 249    | 0.15  |
|                                      | 15131       | Barkantine Clinic / Hutchings Street | 136    | 0.08  |
| WFRYBS                               | 3201        | Byng Street                          | 225    | 0.14  |
|                                      | 15129       | Marsh Wall / Heron Quay              | 221    | 0.14  |
|                                      | LE186       | West India Avenue                    |        |       |
|                                      | R0315       | Canary Wharf Station                 | 295    | 0.18  |
|                                      | BP3588      | Canada Square North                  | 214    | 0.13  |
|                                      | R0314       | Canada Square South                  |        |       |
| CNWFSN                               | BP2355      | Canary Wharf Station                 | 175    | 0.11  |
|                                      | LE190       | Columbus Courtyard                   | 346    | 0.21  |
|                                      | LE193       | Westferry Circus                     | 148    | 0.09  |
|                                      | BP1231      | Westferry Station                    | 454    | 0.28  |
|                                      | BP638       | Salter Street                        | 108    | 0.07  |
| LIMEBR                               | 25270       | East India Dock Road                 | 357    | 0.22  |
|                                      | 14495       | Pixley Street                        | 275    | 0.17  |
|                                      | 27785       | St Paul's Way                        | 171    | 0.11  |
|                                      | 20927       | Turners Road                         | 148    | 0.09  |
|                                      | 14487       | Eric Street                          | 426    | 0.26  |
|                                      | 14485       | Bow Common Lane                      | 129    | 0.08  |
|                                      | 1423        | Mile End Station                     | 178    | 0.11  |
| MNSNGR                               | FC17        | Mile End Station / Mile End Road     | 250    | 0.16  |
|                                      | 14483       | Lichfield Road                       | 125    | 0.08  |
|                                      | 14481       | Arbery Road                          | 306    | 0.19  |
|                                      | 14479       | St Barnabas Church                   | 174    | 0.11  |
|                                      | 14477       | Old Ford Road                        | 215    | 0.13  |
|                                      | BP940       | Victoria Park                        | 256    | 0.16  |
|                                      | 14473       | Victoria Park Road                   | 380    | 0.24  |
| LAURCC                               | 14470       | Moulins Road                         | 376    | 0.23  |
|                                      | 14471       | Terrace Road                         | 169    | 0.11  |
|                                      | 14467       | Well Street / Holcroft Road          | 155    | 0.10  |
|                                      | 25446       | Well Street / Shore Road             | 325    | 0.20  |
|                                      | 2275        | St Thomas's Square                   | 385    | 0.24  |
|                                      | 306         | Hackney Town Hall                    | 372    | 0.23  |
| HCKCGR                               | 308         | Graham Road / Hackney Central        | 278    | 0.17  |
|                                      | BP5484      | Royal Oak Road                       | 338    | 0.21  |
|                                      | 1115        | Greenwood Road                       | 206    | 0.13  |
|                                      | 782         | Queensbridge Road / Dalston Lane     | 286    | 0.18  |
| DALSJC                               | 320         | Dalston Junction                     | 336    | 0.21  |
|                                      | 2640        | Balls Pond Road / Burder Road        | 319    | 0.20  |
|                                      | 913         | Southgate Road                       | 363    | 0.23  |
|                                      | 905         | Essex Road / Newington Green Road    | 220    | 0.14  |
|                                      | 909         | St Paul's Road / Ramsey Walk         | 90     | 0.06  |
|                                      | 17294       | Clephane Road                        | 214    | 0.13  |
|                                      | 9242        | St Paul's Road / Highbury Grove      | 634    | 0.39  |
| HYISSN                               | 11470       | Highbury Corner                      | 157    | 0.10  |
| Total Route Mileage - Back Direction |             |                                      | 8.08   |       |
|                                      |             |                                      | Metres | Miles |



Transport for London - QSI Points and Live Mileage List

v2.0 - Mileage directly imported from Caesar

**TRANCHE 552**

Route 277 (Option 2)  
 Service change 28944  
 Date 12/01/2013

Option 2 : Rerouting to Crossharbour and withdrawal Highbury Corner to Dalston Junction

Reason for Issue

QSI Points are highlighted

| OUT DIRECTION                       |               |                                      |             |             |
|-------------------------------------|---------------|--------------------------------------|-------------|-------------|
| Timing Point Code                   | Stop Number   | Stop Name                            | Metres      | Miles       |
| <b>DALSBS</b>                       | <b>BP5617</b> | <b>Dalston Junction Bus Station</b>  |             |             |
|                                     | 14219         | Dalston Lane / Dalston Junction      | <b>243</b>  | <b>0.15</b> |
|                                     | 783           | Graham Road / S tannard Road         | 414         | 0.26        |
|                                     | 1114          | Greenwood Road                       | 272         | 0.17        |
|                                     | 2648          | Royal Oak Road                       | 261         | 0.16        |
| <b>HCKCGR</b>                       | <b>20997</b>  | <b>Mare Street</b>                   | <b>316</b>  | <b>0.20</b> |
|                                     | 307           | Hackney Town Hall                    | 204         | 0.13        |
|                                     | 2276          | St Thomas's Square                   | 328         | 0.20        |
|                                     | 25445         | Well Street / Shore Road             | 444         | 0.28        |
|                                     | 14466         | Holcroft Road                        | 294         | 0.18        |
|                                     | BP3699        | Terrace Road                         | 201         | 0.12        |
|                                     | BP4167        | Church Crescent                      | 153         | 0.10        |
| <b>LAURCC</b>                       | <b>14474</b>  | <b>Lauriston Road</b>                | <b>187</b>  | <b>0.12</b> |
|                                     | 14476         | Victoria Park Road                   | 295         | 0.18        |
|                                     | 14478         | Victoria Park                        | 431         | 0.27        |
|                                     | 2955          | Roman Road                           | 281         | 0.17        |
|                                     | 18213         | St Barnabas Church                   | 165         | 0.10        |
|                                     | 14482         | Arbery Road                          | 206         | 0.13        |
|                                     | 14484         | Lichfield Road                       | 209         | 0.13        |
| <b>MNSNGR</b>                       | <b>1422</b>   | <b>Mile End Station / Bow Road</b>   | <b>167</b>  | <b>0.10</b> |
|                                     | 1424          | Mile End Station                     | 177         | 0.11        |
|                                     | 14488         | Eric Street                          | 448         | 0.28        |
|                                     | R0381         | Mile End Park Leisure Centre         | 182         | 0.11        |
|                                     | R0781         | St Paul's Way                        | 188         | 0.12        |
|                                     | 14496         | Pixley Street                        | 320         | 0.20        |
| <b>LIMEBR</b>                       | <b>R0780</b>  | <b>East India Dock Road</b>          | <b>309</b>  | <b>0.19</b> |
|                                     | 36875         | Limehouse Police Station             | 152         | 0.09        |
|                                     | 15128         | Westferry Station                    | 345         | 0.21        |
|                                     | LE186         | Cabot Square                         | 495         | 0.31        |
| <b>CNWFSN</b>                       | <b>R0315</b>  | <b>Canary Wharf Station</b>          | <b>295</b>  | <b>0.18</b> |
|                                     | BP3588        | Canada Square North                  | 214         | 0.13        |
|                                     | R0314         | Canada Square South                  |             |             |
|                                     | BP2355        | Canary Wharf Station                 |             |             |
|                                     | BP2356        | West India Avenue                    |             |             |
|                                     | 15130         | Marsh Wall / Heron Quay              |             |             |
| WFRYCS                              | 3200          | Cuba Street                          | 197         | 0.12        |
|                                     | 15132         | Barkantine Clinic / Hutchings Street | 269         | 0.17        |
|                                     | 15134         | Sir John Mcdougal Gardens            | 257         | 0.16        |
| <b>MILLDB</b>                       | <b>13418</b>  | <b>Arnhem Wharf Primary School</b>   | <b>264</b>  | <b>0.16</b> |
|                                     | 15136         | Crews Street / The Space Theatre     | 240         | 0.15        |
|                                     | 15138         | St Edmund's School                   | 231         | 0.14        |
|                                     | 15140         | Harbinger School                     | 232         | 0.14        |
|                                     | 16353         | Maconochies Road                     | 167         | 0.10        |
| <b>IGNSWE</b>                       | <b>15142</b>  | <b>East Ferry Road</b>               | <b>326</b>  | <b>0.20</b> |
|                                     | BP2335        | Mudchute Station / Spindrif Ave      | 321         | 0.20        |
|                                     | BP5153        | Mudchute Station                     | 232         | 0.14        |
| CHBRAS                              | OC673         | Isle Of Dogs Asda                    | 480         | 0.30        |
| Total Route Mileage - Out Direction |               |                                      | <b>7.29</b> |             |
|                                     |               |                                      | Metres      | Miles       |

| BACK DIRECTION                       |               |   |             |             |
|--------------------------------------|---------------|---|-------------|-------------|
| Timing Point Code                    | Stop Number   | Stop Name                               | Metres      | Miles       |
| CHBRAS                               | R0752         | Crossharbour Asda                       |             |             |
|                                      | BP5152        | Mudchute Station                        | 319         | 0.20        |
|                                      | 36868         | Millwall Park                           | 396         | 0.25        |
| <b>IGNSWC</b>                        | <b>15141</b>  | <b>Langbourne Place</b>                 | <b>423</b>  | <b>0.26</b> |
|                                      | 15139         | Harbinger School                        | 331         | 0.21        |
|                                      | 15137         | St Edmund's School                      | 304         | 0.19        |
|                                      | 15135         | Crews Street                            | 199         | 0.12        |
| <b>MILLDB</b>                        | <b>559</b>    | <b>Arnhem Wharf Primary School</b>      | <b>220</b>  | <b>0.14</b> |
|                                      | 15133         | Sir John Mcdougal Gardens               | 249         | 0.15        |
|                                      | 15131         | Barkantine Clinic / Hutchings Street    | 136         | 0.08        |
| WFRYBS                               | 3201          | Byng Street                             | 225         | 0.14        |
|                                      | 15129         | Marsh Wall / Heron Quay                 | 221         | 0.14        |
|                                      | LE186         | West India Avenue                       |             |             |
|                                      | R0315         | Canary Wharf Station                    | 295         | 0.18        |
|                                      | BP3588        | Canada Square North                     | 214         | 0.13        |
|                                      | R0314         | Canada Square South                     |             |             |
| <b>CNWFSN</b>                        | <b>BP2355</b> | <b>Canary Wharf Station</b>             | <b>175</b>  | <b>0.11</b> |
|                                      | LE190         | Columbus Courtyard                      | 346         | 0.21        |
|                                      | LE193         | Westferry Circus                        | 148         | 0.09        |
|                                      | BP1231        | Westferry Station                       | 454         | 0.28        |
|                                      | BP638         | Salter Street                           | 108         | 0.07        |
| <b>LIMEBR</b>                        | <b>25270</b>  | <b>East India Dock Road</b>             | <b>357</b>  | <b>0.22</b> |
|                                      | 14495         | Pixley Street                           | 275         | 0.17        |
|                                      | 27785         | St Paul's Way                           | 171         | 0.11        |
|                                      | 20927         | Turners Road                            | 148         | 0.09        |
|                                      | 14487         | Eric Street                             | 426         | 0.26        |
|                                      | 14485         | Bow Common Lane                         | 129         | 0.08        |
|                                      | 1423          | Mile End Station                        | 178         | 0.11        |
| <b>MNSNGR</b>                        | <b>FC17</b>   | <b>Mile End Station / Mile End Road</b> | <b>250</b>  | <b>0.16</b> |
|                                      | 14483         | Lichfield Road                          | 125         | 0.08        |
|                                      | 14481         | Arbery Road                             | 306         | 0.19        |
|                                      | 14479         | St Barnabas Church                      | 174         | 0.11        |
|                                      | 14477         | Old Ford Road                           | 215         | 0.13        |
|                                      | BP940         | Victoria Park                           | 256         | 0.16        |
|                                      | 14473         | Victoria Park Road                      | 380         | 0.24        |
| <b>LAURCC</b>                        | <b>14470</b>  | <b>Moulins Road</b>                     | <b>376</b>  | <b>0.23</b> |
|                                      | 14471         | Terrace Road                            | 169         | 0.11        |
|                                      | 14467         | Well Street / Holcroft Road             | 155         | 0.10        |
|                                      | 25446         | Well Street / Shore Road                | 325         | 0.20        |
|                                      | 2275          | St Thomas's Square                      | 385         | 0.24        |
|                                      | 306           | Hackney Town Hall                       | 372         | 0.23        |
| <b>HCKCGR</b>                        | <b>308</b>    | <b>Graham Road / Hackney Central</b>    | <b>278</b>  | <b>0.17</b> |
|                                      | BP5484        | Royal Oak Road                          | 338         | 0.21        |
|                                      | 1115          | Greenwood Road                          | 206         | 0.13        |
|                                      | 782           | Queensbridge Road / Dalston Lane        | 286         | 0.18        |
|                                      | 320           | Dalston Junction                        | 336         | 0.21        |
| <b>DALSJC</b>                        | <b>2095</b>   | <b>Kingsland Road / Forest Road</b>     | <b>275</b>  | <b>0.17</b> |
| Total Route Mileage - Back Direction |               |   | <b>7.11</b> |             |
|                                      |               |   | Metres      | Miles       |

Transport for London - QSI Points and Live Mileage List

v2.0 - Mileage directly imported from Caesar

**TRANCHE 552**

Route N277 (Option 2)  
 Service change 28944  
 Date 12/01/2013

Option 2 : Rerouting to Crossharbour and extension to Islington Angel

Reason for Issue

QSI Points are highlighted

| OUT DIRECTION                       |             |                                      |        |       |
|-------------------------------------|-------------|--------------------------------------|--------|-------|
| Timing Point Code                   | Stop Number | Stop Name                            | Metres | Miles |
| ISLNWL                              | 9488        | White Lion Street                    |        |       |
| ISLNHS                              | 25146       | Angel Station                        | 247    | 0.15  |
|                                     | 9996        | Theberton Street                     | 341    | 0.21  |
|                                     | 29792       | St Mary's Church                     | 249    | 0.15  |
|                                     | 26500       | Islington Town Hall                  | 318    | 0.20  |
|                                     | 10002       | Highbury Corner                      | 341    | 0.21  |
| HYISSN                              | 11469       | St Paul's Road /Highbury Corner      | 286    | 0.18  |
|                                     | 17293       | Highbury Grove                       | 226    | 0.14  |
|                                     | 17295       | Clephane Road                        | 533    | 0.33  |
|                                     | 908         | ewington Green Road / Essex Road     | 176    | 0.11  |
|                                     | 2638        | Mildmay Park / Southgate Road        | 239    | 0.15  |
|                                     | 2639        | Culford Road                         | 228    | 0.14  |
|                                     | 13506       | Dalston Junction Station             | 346    | 0.21  |
| DALSJC                              | 14219       | Dalston Lane / Dalston Junction      | 176    | 0.11  |
|                                     | 783         | Graham Road / Stannard Road          | 414    | 0.26  |
|                                     | 1114        | Greenwood Road                       | 272    | 0.17  |
|                                     | 2648        | Royal Oak Road                       | 261    | 0.16  |
| HCKCGR                              | 20997       | Mare Street                          | 316    | 0.20  |
|                                     | 307         | Hackney Town Hall                    | 204    | 0.13  |
|                                     | 2276        | St Thomas's Square                   | 328    | 0.20  |
|                                     | 25445       | Well Street / Shore Road             | 444    | 0.28  |
|                                     | 14466       | Holcroft Road                        | 294    | 0.18  |
|                                     | BP3699      | Terrace Road                         | 201    | 0.12  |
|                                     | BP4167      | Church Crescent                      | 153    | 0.10  |
| LAURCC                              | 14474       | Lauriston Road                       | 187    | 0.12  |
|                                     | 14476       | Victoria Park Road                   | 295    | 0.18  |
|                                     | 14478       | Victoria Park                        | 431    | 0.27  |
|                                     | 2955        | Roman Road                           | 281    | 0.17  |
|                                     | 18213       | St Barnabas Church                   | 165    | 0.10  |
|                                     | 14482       | Arbery Road                          | 206    | 0.13  |
|                                     | 14484       | Lichfield Road                       | 209    | 0.13  |
| MNSNGR                              | 1422        | Mile End Station / Bow Road          | 167    | 0.10  |
|                                     | 1424        | Mile End Station                     | 177    | 0.11  |
|                                     | 14488       | Eric Street                          | 448    | 0.28  |
|                                     | R0381       | Mile End Park Leisure Centre         | 182    | 0.11  |
|                                     | R0781       | St Paul's Way                        | 188    | 0.12  |
|                                     | 14496       | Pixley Street                        | 320    | 0.20  |
| LIMEBR                              | R0780       | East India Dock Road                 | 309    | 0.19  |
|                                     | 36875       | Limehouse Police Station             | 152    | 0.09  |
|                                     | 15128       | Westferry Station                    | 345    | 0.21  |
|                                     | LE186       | Cabot Square                         | 495    | 0.31  |
| CNWFSN                              | R0315       | Canary Wharf Station                 | 295    | 0.18  |
|                                     | BP3588      | Canada Square North                  | 214    | 0.13  |
|                                     | R0314       | Canada Square South                  |        |       |
|                                     | BP2355      | Canary Wharf Station                 |        |       |
|                                     | BP2356      | West India Avenue                    |        |       |
| WFRYCS                              | 15130       | Marsh Wall / Heron Quay              |        |       |
|                                     | 3200        | Cuba Street                          | 197    | 0.12  |
|                                     | 15132       | Barkantine Clinic / Hutchings Street | 269    | 0.17  |
|                                     | 15134       | Sir John McDougal Gardens            | 257    | 0.16  |
| MILLDB                              | 13418       | Arnhem Wharf Primary School          | 264    | 0.16  |
|                                     | 15136       | Crews Street / The Space Theatre     | 240    | 0.15  |
|                                     | 15138       | St Edmund's School                   | 231    | 0.14  |
|                                     | 15140       | Harbinger School                     | 232    | 0.14  |
|                                     | 16353       | Maconochies Road                     | 167    | 0.10  |
| IGNSWE                              | 15142       | East Ferry Road                      | 326    | 0.20  |
|                                     | BP2335      | Mudchute Station / Spindrift Ave     | 321    | 0.20  |
|                                     | BP5153      | Mudchute Station                     | 232    | 0.14  |
| CHBRAS                              | OC673       | Isle Of Dogs Asda                    | 480    | 0.30  |
| Total Route Mileage - Out Direction |             |                                      |        | 9.41  |
|                                     |             |                                      | Metres | Miles |

| BACK DIRECTION                       |             |                                      |        |       |
|--------------------------------------|-------------|--------------------------------------|--------|-------|
| Timing Point Code                    | Stop Number | Stop Name                            | Metres | Miles |
| CHBRAS                               | R0752       | Crossharbour Asda                    |        |       |
|                                      | BP5152      | Mudchute Station                     | 319    | 0.20  |
|                                      | 36868       | Millwall Park                        | 396    | 0.25  |
| IGNSWC                               | 15141       | Langbourne Place                     | 423    | 0.26  |
|                                      | 15139       | Harbinger School                     | 331    | 0.21  |
|                                      | 15137       | St Edmund's School                   | 304    | 0.19  |
|                                      | 15135       | Crews Street                         | 199    | 0.12  |
| MILLDB                               | 559         | Arnhem Wharf Primary School          | 220    | 0.14  |
|                                      | 15133       | Sir John McDougal Gardens            | 249    | 0.15  |
|                                      | 15131       | Barkantine Clinic / Hutchings Street | 136    | 0.08  |
| WFRYBS                               | 3201        | Byng Street                          | 225    | 0.14  |
|                                      | 15129       | Marsh Wall / Heron Quay              | 221    | 0.14  |
|                                      | LE186       | West India Avenue                    |        |       |
|                                      | R0315       | Canary Wharf Station                 | 295    | 0.18  |
|                                      | BP3588      | Canada Square North                  | 214    | 0.13  |
|                                      | R0314       | Canada Square South                  |        |       |
| CNWFSN                               | BP2355      | Canary Wharf Station                 | 175    | 0.11  |
|                                      | LE190       | Columbus Courtyard                   | 346    | 0.21  |
|                                      | LE193       | Westferry Circus                     | 148    | 0.09  |
|                                      | BP1231      | Westferry Station                    | 454    | 0.28  |
|                                      | BP638       | Salter Street                        | 108    | 0.07  |
| LIMEBR                               | 25270       | East India Dock Road                 | 357    | 0.22  |
|                                      | 14495       | Pixley Street                        | 275    | 0.17  |
|                                      | 27785       | St Paul's Way                        | 171    | 0.11  |
|                                      | 20927       | Turners Road                         | 148    | 0.09  |
|                                      | 14487       | Eric Street                          | 426    | 0.26  |
|                                      | 14485       | Bow Common Lane                      | 129    | 0.08  |
|                                      | 1423        | Mile End Station                     | 178    | 0.11  |
| MNSNGR                               | FC17        | Mile End Station / Mile End Road     | 250    | 0.16  |
|                                      | 14483       | Lichfield Road                       | 125    | 0.08  |
|                                      | 14481       | Arbery Road                          | 306    | 0.19  |
|                                      | 14479       | St Barnabas Church                   | 174    | 0.11  |
|                                      | 14477       | Old Ford Road                        | 215    | 0.13  |
|                                      | BP940       | Victoria Park                        | 256    | 0.16  |
|                                      | 14473       | Victoria Park Road                   | 380    | 0.24  |
| LAURCC                               | 14470       | Moulins Road                         | 376    | 0.23  |
|                                      | 14471       | Terrace Road                         | 169    | 0.11  |
|                                      | 14467       | Well Street / Holcroft Road          | 155    | 0.10  |
|                                      | 25446       | Well Street / Shore Road             | 325    | 0.20  |
|                                      | 2275        | St Thomas's Square                   | 385    | 0.24  |
|                                      | 306         | Hackney Town Hall                    | 372    | 0.23  |
| HCKCGR                               | 308         | Graham Road / Hackney Central        | 278    | 0.17  |
|                                      | BP5484      | Royal Oak Road                       | 338    | 0.21  |
|                                      | 1115        | Greenwood Road                       | 206    | 0.13  |
|                                      | 782         | Queensbridge Road / Dalston Lane     | 286    | 0.18  |
| DALSJC                               | 320         | Dalston Junction                     | 336    | 0.21  |
|                                      | 2640        | Balls Pond Road / Burder Road        | 319    | 0.20  |
|                                      | 913         | Southgate Road                       | 363    | 0.23  |
|                                      | 905         | Essex Road / Newington Green Road    | 220    | 0.14  |
|                                      | 909         | St Paul's Road / Ramsey Walk         | 90     | 0.06  |
|                                      | 17294       | Clephane Road                        | 214    | 0.13  |
|                                      | 9242        | St Paul's Road / Highbury Grove      | 634    | 0.39  |
| HYISSN                               | 11470       | Highbury Corner                      | 157    | 0.10  |
|                                      | 80001       | Upper Street / Laycock Street        | 310    | 0.19  |
|                                      | 33092       | Islington Town Hall                  | 232    | 0.14  |
|                                      | 29748       | St Mary's Church                     | 432    | 0.27  |
|                                      | 9995        | Islington Green                      | 264    | 0.16  |
| ISLNHS                               | 36602       | Angel Station                        | 315    | 0.20  |
|                                      | 361         | Pentonville Road / Baron Street      | 304    | 0.19  |
| ISLNWL                               | 9488        | White Lion Street                    |        |       |
| Total Route Mileage - Back Direction |             |                                      |        | 9.41  |
|                                      |             |                                      | Metres | Miles |