

## 7. Service Specification

Route: 262

QC44001

This Service Specification forms section 7 of the ITT and should be read in conjunction with the ITT document, Version 1 dated 29 September 2011.

You are formally invited to tender for the provision of the bus service detailed below and in accordance with this Service Specification. Tenderers must ensure that a Compliant Tender is submitted and this will only be considered for evaluation if all parts of the Tender documents, as set out in section 11, have been received by the Corporation by the Date of Tender. The Tender must be fully completed in the required format, in accordance with the Instructions to Tenderers. A Compliant Tender must comply fully with the requirements of the Framework Agreement; adhere to the requirements of the Service Specification; and reflect the price of operating the Services with new vehicles.

<b>Terminus Points</b>	East Beckton, Sainsbury's to Stratford Bus Station
<b>Contract Basis</b>	Incentivised
<b>Commencement Date</b>	29 <sup>th</sup> March 2014
<b>Vehicle Type</b>	87 capacity, dual door, double deck buses
<b>Current Maximum Approved Dimensions</b>	9.95 metres long and 2.55 metres wide
<b>New Vehicles Mandatory</b>	Yes
<b>Hybrid Price Required</b>	Yes
<b>Sponsored Route</b>	No
<b>Advertising Rights</b>	Operator
<b>Minimum Performance Standard</b>	Average Excess Wait Time - No more than 0.80 minutes
<b>Extension Threshold</b>	Average Excess Wait Time Threshold - 0.70 minutes
<b>Minimum Operated Mileage Standard</b>	No less than 98.00%

The Date of Tender for this ITT is: No later than 12 Noon on Monday 25<sup>th</sup> March 2013

*Tenderers should refer to section 3 of Part A for the Service Specification Explanatory Notes and Appendix B of section 5 for the Example Service Specification of the ITT document.*

## **SERVICE SPECIFICATION**

- 1) SERVICE SPEC - ROUTE SPECIFICATION INFORMATION
- 2) NOTES
- 3) SCHEDULE REQUIREMENTS & PINCHPOINTS
- 4) OPERATIONAL CONSIDERATIONS
- 5) ROUTE RECORD, CURRENT PERFORMANCE, QSI BY TIME OF DAY, IBUS MILEAGE & QSI POINTS

## 2) NOTES

### Proposed Changes:

At this time, no changes are proposed to the existing service for introduction prior to the commencement of the new Route Agreement for Route No. 262.

Tenderers should note that the following alterations (subject to consultation) are proposed as part of this Service Specification for introduction with the new Route Agreement:

- **Tenderers should note that it is anticipated that the current DfT BSOG claims process will be discontinued for London contracts from 5<sup>th</sup> October 2013. Tender prices should therefore reflect this, however please continue to separately identify the fuel cost should the current BSOG process continue to apply after that date.**

- The Boxing Day service should match the Sunday service.
- **Tenderers must identify the cost of the Boxing Day element of this service separately.**

## 3) SCHEDULE REQUIREMENTS & PINCHPOINTS

### 3.1) MONDAY TO FRIDAY SCHEDULE REQUIREMENTS & PINCHPOINTS

East Beckton, Sainsbury's to Stratford Bus Station			Stratford Bus Station to East Beckton, Sainsbury's		
First departure no later than 0430.			First departure no later than 0510.		
0425 - 0500	Every 15 minutes		0505 - 0610	Every 15 minutes	
0501 - 0545	Every 12 minutes		0611 - 0635	Every 12 minutes	
0546 - 1845	Every 10 minutes		0636 - 1935	Every 10 minutes	
1846 - 1945	Every 12 minutes		1936 - 2020	Every 12 minutes	
1946 - 0020	Every 15 minutes		2021 - 0125	Every 15 minutes	
Last departure no earlier than 0015.			Last departure no earlier than 0120.		
<b>Pinchpoints</b>					
Plaiستow, Greengate	0700 - 0900	10 minutes	Beckton Bus Station	0710 - 0910	10 minutes
	1505 - 1635	10 minutes		1505 - 1635	10 minutes

**3) SCHEDULE REQUIREMENTS & PINCHPOINTS - continued**

**3.2) SATURDAY AND GOOD FRIDAY SCHEDULE REQUIREMENTS & PINCHPOINTS**

East Beckton, Sainsbury's to Stratford Bus Station			Stratford Bus Station to East Beckton, Sainsbury's		
First departure no later than 0430.			First departure no later than 0510.		
0425 - 0715	Every 15 minutes		0505 - 0725	Every 15 minutes	
0716 - 0740	Every 12 minutes		0726 - 0825	Every 12 minutes	
0741 - 1840	Every 10 minutes		0826 - 1855	Every 10 minutes	
1841 - 1915	Every 12 minutes		1856 - 1950	Every 12 minutes	
1916 - 0020	Every 15 minutes		1951 - 0125	Every 15 minutes	
Last departure no earlier than 0015.			Last departure no earlier than 0120.		
<b>Pinchpoints</b>					
Plaistow, Greengate	0905 - 1105	10 minutes	Beckton Bus Station	0850 - 1110	10 minutes

**3.3) SUNDAY AND PUBLIC HOLIDAY SCHEDULE REQUIREMENTS & PINCHPOINTS**

East Beckton, Sainsbury's to Stratford Bus Station			East Beckton, Sainsbury's to Stratford Bus Station		
First departure no later than 0520.			First departure no later than 0600.		
0515 - 0820	Every 20 minutes		0555 - 0920	Every 20 minutes	
0821 - 0020	Every 15 minutes		0921 - 0125	Every 15 minutes	
Last departure no earlier than 0015.			Last departure no earlier than 0120.		
<b>Pinchpoints</b>					
Plaistow, Greengate	1025 - 1125	15 minutes	Beckton Bus Station	1025 - 1125	15 minutes

**Tenderers must identify the cost of the Boxing Day element of this service separately.**

**4) OPERATIONAL CONSIDERATIONS**

- 4.1) Route No. 262 should interwork with Route No. 473 between Plaistow, Greengate and Stratford Bus Station during all periods, where possible.
- 4.2) Route No. 262 can suffer from unpredictable traffic delays in the Plaistow and Stratford areas.
- 4.3) Home matches at West Ham United football club can lead to traffic delays in the surrounding areas.

**5) ROUTE RECORD, CURRENT PERFORMANCE, QSI BY TIME OF DAY,  
IBUS MILEAGE & QSI POINTS**

5.1) ROUTE RECORD  
As per Busnet Printout.

5.2) CURRENT PERFORMANCE  
As per current print out.

5.3) QSI BY TIME OF DAY  
As per current print out.

5.4) IBUS MILEAGE & QSI POINTS  
As per current print out.

# LONDON BUSES - ROUTE DESCRIPTION

## ROUTE 262: East Beckton, Sainsbury's - Stratford, Bus Station

**Date of Structural Change:** 29 March 2014.

**Date of Service Change:** 29 March 2014.

**Reason for Issue:** New Tender.

### **STREETS TRAVERSED**

**Towards Stratford, Bus Station:** Sainsburys Access Road, Claps Gate Lane, Royal Docks Road, Armada Way, Gallions Reach Access Road, Bus Turning Circle, Gallions Reach Access Road, Armada Way, Atlantis Avenue, Gallions Roundabout, Woolwich Manor Way, Beckton Bus Station, Woolwich Manor Way, Tollgate Road, Newham Way, Prince Regent Lane, Greengate Street, Plaistow Broadway, Plaistow High Street, Plaistow Road, New Plaistow Road, West Ham Lane, Tramway Avenue, Stratford Broadway, Great Eastern Road, Station Street.

**Towards East Beckton, Sainsbury's:** Stratford Bus Station, Great Eastern Road, Stratford Broadway, West Ham Lane, New Plaistow Road, Plaistow Road, Plaistow High Street, Plaistow Broadway, Greengate Street, Prince Regent Lane, Newham Way, Tollgate Road, Woolwich Manor Way, Beckton Bus Station, Woolwich Manor Way, Gallions Roundabout, Atlantis Avenue, Armada Way, Gallions Reach Access Road, Bus Turning Circle, Gallions Reach Access Road, Armada Way, Royal Docks Road, Claps Gate Lane, Sainsburys Access Road.

## **AUTHORISED STANDS, CURTAILMENT POINTS, & BLIND DESCRIPTIONS**

Please note that only stands, curtailment points, & blind descriptions as detailed in this contractual document may be used.

### **EAST BECKTON, SAINSBURYS**

Private stand for two buses extending 28 metres on the east side of the loop of the slip road adjacent to Sainsbury's.

Buses proceed from Sainsburys Access Road direct to stand, departing to Sainsburys Access Road. Set down in Sainsburys Access Road, at Stop B (BP556 - East Beckton / Sainsbury's, Last Stop on LOR: BP556 - East Beckton / Sainsbury's) and pick up in Sainsburys Access Road, at Stop A (BP557 - East Beckton / Sainsbury's, First Stop on LOR: BP557 - East Beckton / Sainsbury's).

AVAILABILITY: At any time.  
OPERATING RESTRICTIONS: No more than 2 buses on Route 262 should be scheduled to stand at any one time.  
MEAL RELIEFS: No meal relief vehicles to stand at any time.  
FERRY VEHICLES: No ferry vehicles to park on stand at any time.  
BLIND DISPLAY: East Beckton, Sainsbury's.

### **GALLIONS REACH SHOPPING PARK (from STRATFORD, BUS STATION)**

Buses proceed from Armada Way via Gallions Reach Access Road and Bus Turning Circle departing to Gallions Reach Access Road. Set down in Gallions Reach Access Road, at Alighting Point AP (BP4624 - Gallions Reach Shopping Park, Last Stop on LOR: BP4622 - Gallions Reach Shopping Park) and pick up in Gallions Reach Access Road, at Stop R (BP4623 - Gallions Reach Shopping Park, First Stop on LOR: BP4623 - Gallions Reach Shopping Park).

AVAILABILITY: At any time.  
OPERATING RESTRICTIONS: **Turning Point Only - Buses must not stand**  
BLIND DISPLAY: Gallions Reach, Shopping Park.

## **GALLIONS REACH STATION**

### From East Beckton, Sainsbury's.

Buses proceed from Atlantis Avenue via Gallions Roundabout departing to Atlantis Avenue. Set down in Atlantis Avenue, at stop D (BP3557 - Gallions Reach Station [dlr], Last Stop on LOR: BP3557 - Gallions Reach Station [dlr]) and pick up in Atlantis Avenue, at stop C (BP5108 - Gallions Reach Station [dlr], First Stop on LOR: BP5108 - Gallions Reach Station [dlr]).

### From Stratford, Bus Station.

Buses proceed from Atlantis Avenue via Armada Way departing to Atlantis Avenue. Set down in Atlantis Avenue, at stop C (BP5108 - Gallions Reach Station [dlr], Last Stop on LOR: BP5108 - Gallions Reach Station [dlr]) and pick up in Atlantis Avenue, at stop D (BP3557 - Gallions Reach Station [dlr], First Stop on LOR: BP3557 - Gallions Reach Station [dlr]).

AVAILABILITY: At any time.  
OPERATING RESTRICTIONS: **Turning Point Only - Buses must not stand**  
BLIND DISPLAY: Gallions Reach Station.

## **BECKTON BUS STATION, SOUTH SIDE**

Private stand for four buses on Routes 366 and 376 in 2 portions on south side of bus station on west side of Woolwich Manor Way.

- 1 - for two buses commencing at a point opposite stop B and extending 32 metres east.
- 2 - for two buses commencing at a point opposite stop A as an overflow stand and extending 28 metres east.

### From East Beckton, Sainsbury's.

Buses proceed from Woolwich Manor Way via Beckton Bus Station to stand, departing to Beckton Bus Station. Set down in Beckton Bus Station, at stop A (BP5194 - Beckton Bus Station, Last Stop on LOR: BP094 - East Ham Manor Way) and pick up in Beckton Bus Station, at stop B (BP5195 - Beckton Bus Station, First Stop on LOR: BP5195 - Beckton Bus Station).

### From Stratford, Bus Station.

Buses proceed from Woolwich Manor Way via Beckton Bus Station to stand, departing to Beckton Bus Station. Set down in Beckton Bus Station, at stop A (BP5194 - Beckton Bus Station, Last Stop on LOR: LE215 - Kingsford Way) and pick up in Beckton Bus Station, at stop C (BP5196 - Beckton Bus Station, First Stop on LOR: BP5196 - Beckton Bus Station).

AVAILABILITY: At any time.  
OPERATING RESTRICTIONS: Unscheduled curtailments only.  
MEAL RELIEFS: No meal relief vehicles to stand at any time.  
FERRY VEHICLES: No ferry vehicles to park on stand at any time.  
BLIND DISPLAY: Beckton Station.



### **PLAISTOW, GREENGATE STREET (from East Beckton, Sainsbury's)**

Buses proceed from Prince Regent Lane via Barking Road, Balaam Street and Plaistow Broadway departing to Greengate Street. Set down in Prince Regent Lane, at stop GT (8107 - Wigston Road, Last Stop on LOR: 8107 - Wigston Road) and pick up in Greengate Street, at stop GP (8100 - Perth Road, First Stop on LOR: 8100 - Perth Road).

AVAILABILITY: At any time.  
OPERATING RESTRICTIONS: **Turning Point Only - Buses must not stand**  
BLIND DISPLAY: Plaistow, Greengate Street.

### **PLAISTOW, BULL ROAD (from East Beckton, Sainsbury's)**

Buses proceed from Plaistow Road via Bull Road, Willis Road and Holbrook Road departing to Plaistow Road. Set down in Plaistow Road, at Stop K (8037 - Corporation Street, Last Stop on LOR: 8037 - Corporation Street) and pick up in Plaistow Road, at Stop J (8036 - Caistor Park Road, First Stop on LOR: 8036 - Caistor Park Road).

AVAILABILITY: At any time.  
OPERATING RESTRICTIONS: **Turning Point Only - Buses must not stand**  
BLIND DISPLAY: Plaistow.

### **STRATFORD BUS STATION**

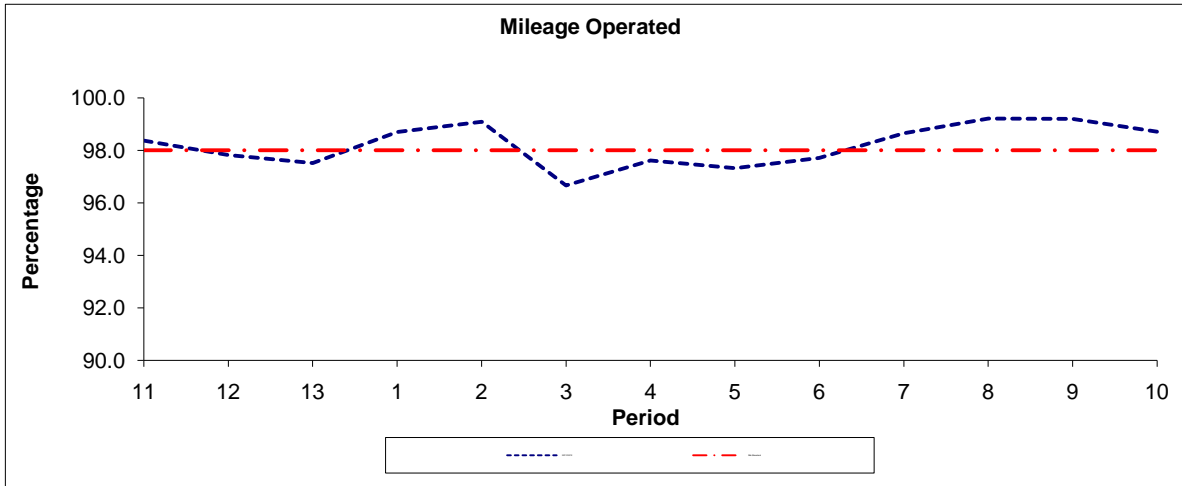
Private stand for up to 14 buses facing north in Stratford Bus Station on west side of Great Eastern Road.

Buses proceed from Station Street via Stratford Bus Station and Stratford Bus Station to stand, departing via Stratford Bus Station to Stratford Bus Station. Set down in Station Street, at Alighting Point (BP5307 - Stratford Bus Station <> # [dlr], Last Stop on LOR: BP5307 - Stratford Bus Station <> # [dlr]) and pick up in Stratford Bus Station, at stop D (BP975 - Stratford Bus Station <>#[dlr], First Stop on LOR: BP975 - Stratford Bus Station <>#[dlr]).

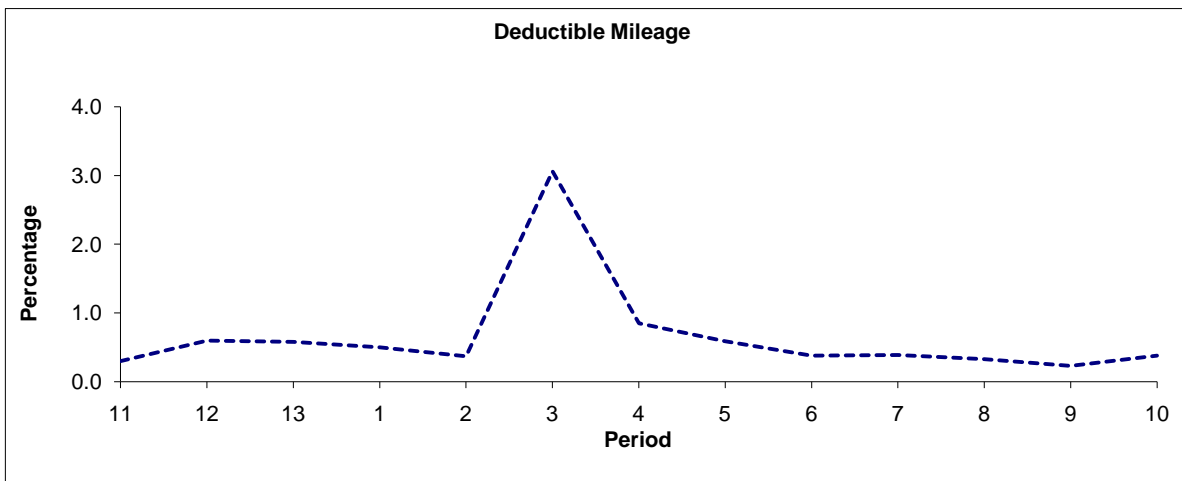
AVAILABILITY: At any time.  
OPERATING RESTRICTIONS: No more than 2 buses on Route 262 should be scheduled to stand at any one time.  
MEAL RELIEFS: No meal relief vehicles to stand at any time.  
FERRY VEHICLES: No ferry vehicles to park on stand at any time.  
BLIND DISPLAY: Stratford.

**PART B - PERFORMANCE STATISTICS**

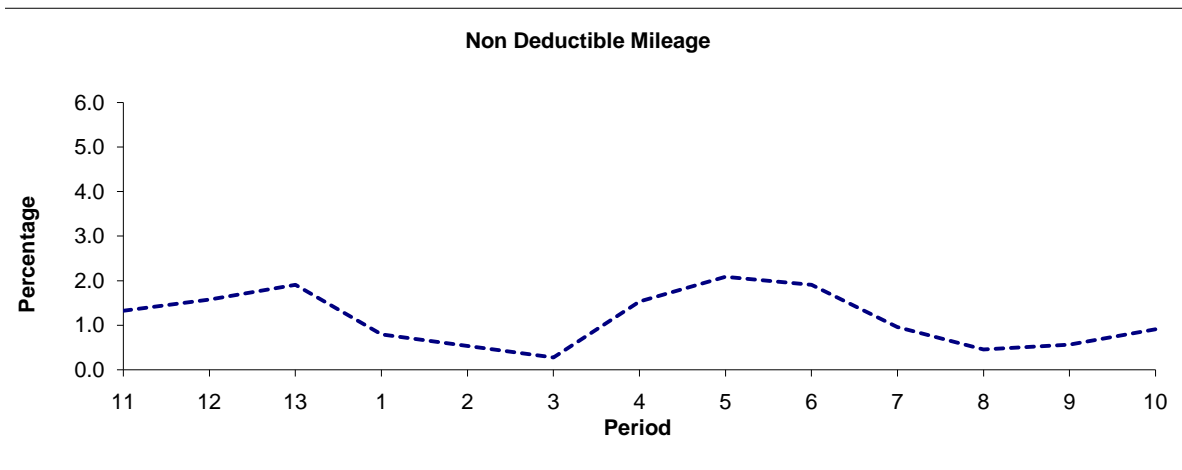
**Route 262**



Period	11	12	13	1	2	3	4	5	6	7	8	9	10
2011/2012	98.37	97.82	97.51	98.70	99.09	96.66	97.61	97.32	97.71	98.65	99.21	99.20	98.71
Min Standard	98.00	98.00	98.00	98.00	98.00	98.00	98.00	98.00	98.00	98.00	98.00	98.00	98.00



Period	11	12	13	1	2	3	4	5	6	7	8	9	10
2011/2012	0.30	0.60	0.58	0.50	0.37	3.06	0.85	0.59	0.38	0.39	0.33	0.23	0.38

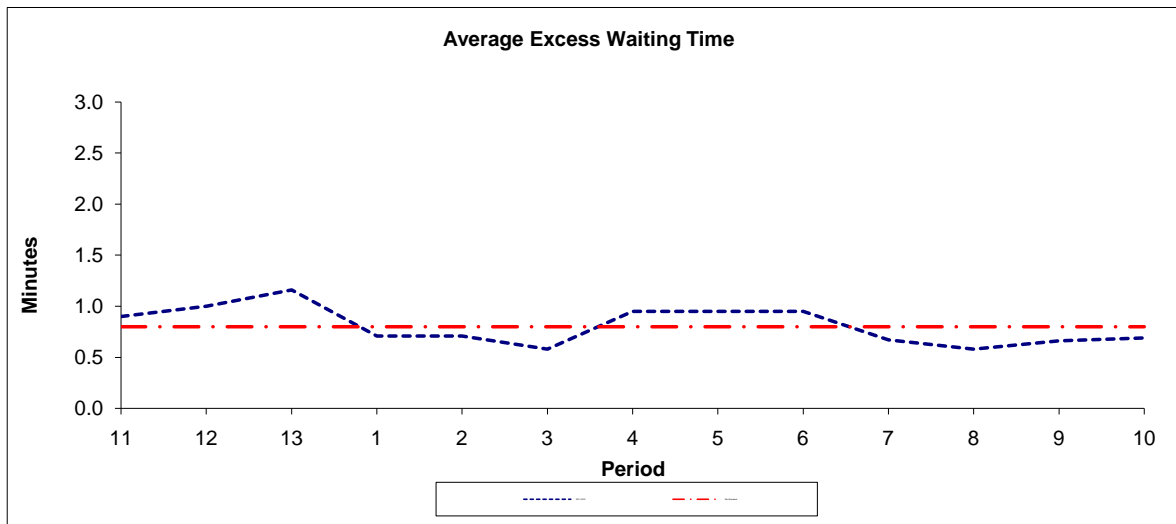


Period	11	12	13	1	2	3	4	5	6	7	8	9	10
2011/2012	1.33	1.58	1.91	0.80	0.54	0.28	1.54	2.09	1.91	0.96	0.46	0.57	0.91

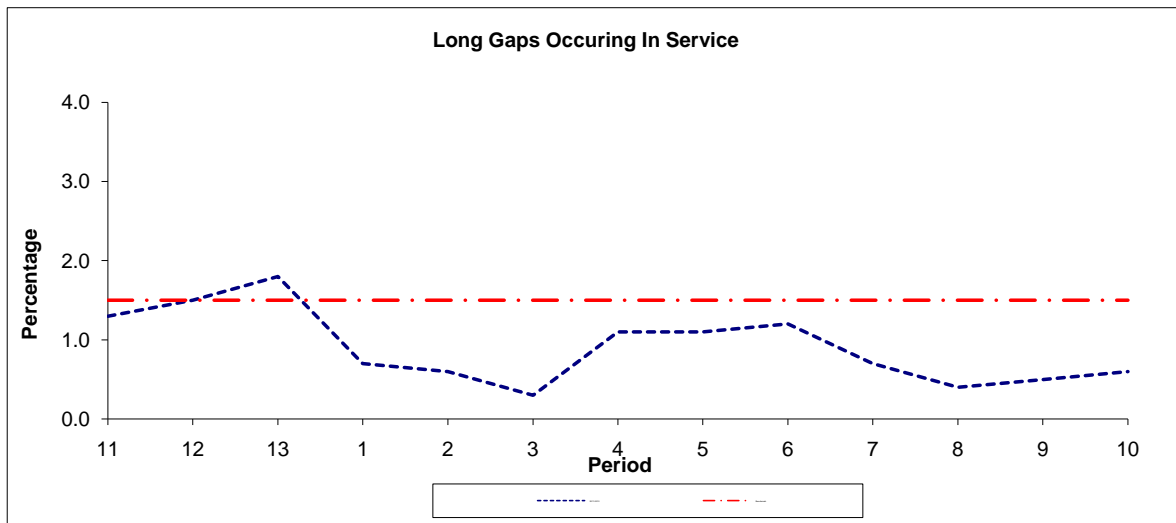
**Note :** Mileage is based on 4 weeks data  
 Performance affected by industrial action in p3 2012/13.

**PART B - PERFORMANCE STATISTICS**

**Route 262**



Period	11	12	13	1	2	3	4	5	6	7	8	9	10
2011-2012	0.90	1.00	1.16	0.71	0.71	0.58	0.95	0.95	0.95	0.67	0.58	0.66	0.69
Min Standard	0.80	0.80	0.80	0.80	0.80	0.80	0.80	0.80	0.80	0.80	0.80	0.80	0.80



Period	11	12	13	1	2	3	4	5	6	7	8	9	10
2011-2012	1.3	1.5	1.8	0.7	0.6	0.3	1.1	1.1	1.2	0.7	0.4	0.5	0.6
Benchmark	1.5	1.5	1.5	1.5	1.5	1.5	1.5	1.5	1.5	1.5	1.5	1.5	1.5

**Note :** Reliability is actual performance under full iBus (4 weeks data).  
 Minimum Standards and Benchmarks are those applicable under the new contract.

**ROUTE 262 - FULL iBUS RESULTS BY TIME OF DAY**  
**QUARTER 4 2011/12 TO QUARTER 3 2012/13 (07/01/12 - 04/01/13)**

**MONDAY - FRIDAY**

Time Period	Expected Buses	On AVL (%)	Scheduled Waiting Time (SWT) (mins)	Excess Waiting Time (EWT) (mins)	Actual Waiting Time (AWT) (mins)	Probability of Waiting < 10 mins (%)	Probability of Waiting 10-20 mins (%)	Probability of Waiting 20-30 mins (%)	Probability of Waiting > 30 mins (%)	Long Gaps (%)	Maximum Gap (mins)
0500 - 0700	27,369.	99.8	6.30	0.37	6.66	81.3	18.2	0.4	0.0	0.1	46
0700 - 1000	56,596.	99.2	5.08	0.51	5.59	87.5	12.1	0.3	0.0	0.3	44
1000 - 1300	57,970.	98.3	5.00	0.57	5.56	87.4	12.2	0.4	0.0	0.4	41
1300 - 1600	58,445.	98.8	4.95	0.85	5.80	84.7	14.4	0.8	0.1	1.0	58
1600 - 1900	57,343.	98.1	5.00	1.11	6.11	82.3	16.1	1.2	0.4	1.6	69
1900 - 2200	46,259.	98.4	6.08	0.91	7.00	73.8	24.0	1.8	0.4	1.0	85
2200 - 2400	25,958.	99.3	7.42	0.53	7.95	65.8	32.2	1.7	0.3	0.3	75
<b>Summary</b>	<b>329,940.</b>	<b>98.7</b>	<b>5.27</b>	<b>0.78</b>	<b>6.05</b>	<b>83.0</b>	<b>16.0</b>	<b>0.9</b>	<b>0.2</b>	<b>0.8</b>	<b>85</b>

**SATURDAY**

Time Period	Expected Buses	On AVL (%)	Scheduled Waiting Time (SWT) (mins)	Excess Waiting Time (EWT) (mins)	Actual Waiting Time (AWT) (mins)	Probability of Waiting < 10 mins (%)	Probability of Waiting 10-20 mins (%)	Probability of Waiting 20-30 mins (%)	Probability of Waiting > 30 mins (%)	Long Gaps (%)	Maximum Gap (mins)
0500 - 0700	4,870.	99.5	7.45	0.26	7.71	67.6	31.6	0.7	0.1	0.2	43
0700 - 1000	10,645.	100.2	5.63	0.35	5.98	85.0	14.8	0.2	0.0	0.1	43
1000 - 1300	12,464.	97.1	4.96	0.66	5.62	86.3	13.1	0.5	0.1	0.6	52
1300 - 1600	12,084.	95.1	5.00	1.57	6.57	78.1	18.9	2.5	0.5	2.9	47
1600 - 1900	12,177.	95.3	4.99	1.77	6.76	78.1	18.5	2.6	0.7	3.4	57
1900 - 2200	8,744.	98.0	6.68	1.26	7.94	66.8	28.9	3.6	0.7	1.3	52
2200 - 2400	5,423.	98.9	7.42	0.67	8.09	64.9	32.3	2.5	0.3	0.3	78
<b>Summary</b>	<b>66,407.</b>	<b>97.3</b>	<b>5.44</b>	<b>1.14</b>	<b>6.58</b>	<b>78.7</b>	<b>19.1</b>	<b>1.9</b>	<b>0.4</b>	<b>1.8</b>	<b>78</b>

**SUNDAY AND BANK HOLIDAYS**

Time Period	Expected Buses	On AVL (%)	Scheduled Waiting Time (SWT) (mins)	Excess Waiting Time (EWT) (mins)	Actual Waiting Time (AWT) (mins)	Probability of Waiting < 10 mins (%)	Probability of Waiting 10-20 mins (%)	Probability of Waiting 20-30 mins (%)	Probability of Waiting > 30 mins (%)	Long Gaps (%)	Maximum Gap (mins)
0500 - 0700	2,637.	100.3	9.77	0.18	9.96	61.1	33.6	4.5	0.8	2.0	45
0700 - 1000	7,861.	98.5	8.80	0.34	9.15	59.7	36.8	3.4	0.2	0.1	48
1000 - 1300	9,275.	99.7	7.38	0.46	7.84	66.4	31.9	1.6	0.1	0.2	37
1300 - 1600	9,244.	98.3	7.32	0.76	8.09	65.2	32.1	2.5	0.2	0.4	45
1600 - 1900	9,527.	97.9	7.33	0.89	8.22	64.8	31.7	3.0	0.6	0.6	52
1900 - 2200	9,139.	100.4	7.45	0.86	8.31	64.5	32.2	2.8	0.6	0.6	55
2200 - 2400	6,211.	98.4	7.43	0.49	7.93	65.7	32.6	1.6	0.2	0.2	45
<b>Summary</b>	<b>53,894.</b>	<b>99.0</b>	<b>7.55</b>	<b>0.68</b>	<b>8.22</b>	<b>64.7</b>	<b>32.5</b>	<b>2.5</b>	<b>0.3</b>	<b>0.4</b>	<b>55</b>

**ALL DAYS**

Time Period	Expected Buses	On AVL (%)	Scheduled Waiting Time (SWT) (mins)	Excess Waiting Time (EWT) (mins)	Actual Waiting Time (AWT) (mins)	Probability of Waiting < 10 mins (%)	Probability of Waiting 10-20 mins (%)	Probability of Waiting 20-30 mins (%)	Probability of Waiting > 30 mins (%)	Long Gaps (%)	Maximum Gap (mins)
0500 - 0700	34,876.	99.8	6.63	0.34	6.98	78.6	20.6	0.7	0.1	0.2	46
0700 - 1000	75,102.	99.3	5.32	0.49	5.80	85.9	13.6	0.5	0.0	0.3	48
1000 - 1300	79,709.	98.3	5.27	0.57	5.84	84.8	14.6	0.5	0.0	0.4	52
1300 - 1600	79,773.	98.2	5.21	0.95	6.16	81.6	16.9	1.2	0.2	1.2	58
1600 - 1900	79,047.	97.7	5.22	1.16	6.39	80.2	17.9	1.5	0.4	1.7	69
1900 - 2200	64,142.	98.6	6.31	0.95	7.27	71.8	25.6	2.2	0.5	1.0	85
2200 - 2400	37,592.	99.1	7.42	0.54	7.96	65.7	32.3	1.8	0.2	0.3	78
<b>Summary</b>	<b>450,241.</b>	<b>98.6</b>	<b>5.51</b>	<b>0.81</b>	<b>6.33</b>	<b>80.7</b>	<b>18.0</b>	<b>1.2</b>	<b>0.2</b>	<b>0.9</b>	<b>85</b>

## Transport for London - QSI Points and Mileage

Route 262  
 Service change 29984  
 Date 17/10/2012

Reason for Issue
------------------

**QSI Points are highlighted in blue.**

OUT DIRECTION				
Timing Point Code	Stop Number	Stop Name	Metres	Miles
EBECSY	BP557	Sainsbury's East Beckton		
	BP1994	Beckton Triangle Retail Park	574	0.36
GALRSP	BP4623	Gallions Reach Shopping Park	1837	1.14
	BP5371	Beckton Dlr Depot	692	0.43
	BP5355	Armada Point	579	0.36
	BP3557	Gallions Reach Station	316	0.20
	BP771	Ferndale Street	565	0.35
CYPSWP	BP234	Horse Leaze	240	0.15
	BP094	East Ham Manor Way	224	0.14
BCKTBS	BP5196	Beckton Bus Station	573	0.36
	LE216	Kingsford Way	628	0.39
	36834	Swallow Street	159	0.10
	36832	Dove Approach	454	0.28
	36829	Beckton District Park	244	0.15
	36817	Beckton School	245	0.15
	36816	Colman Road	294	0.18
PRLNBR	8113	Bennett Road	537	0.33
	8109	Newham University Hospital	366	0.23
	8107	Wigston Road	125	0.08
PLASGG	8105	Barking Road	312	0.19
	8101	Gad Close	150	0.09
	35716	Balaam Street	383	0.24
	8096	Kennedy Close	139	0.09
PLASSN	8041	Plaistow Station	290	0.18
	8037	Corporation Street	266	0.17
	8035	Plaistow Grove	271	0.17
	8029	Church Street	427	0.27
	8027	Paul Street	250	0.16
	8023	Stratford Broadway	346	0.21
STFDDBS	BP5307	Stratford Bus Station	520	0.32
Total Route Mileage - Out Direction			12006 metres	7.46 miles

**TRANCHE 440**

<b>BACK DIRECTION</b>				
<b>Timing Point Code</b>	<b>Stop Number</b>	<b>Stop Name</b>	<b>Metres</b>	<b>Miles</b>
STFDBS	BP975	Stratford Bus Station		
	36929	Stratford Centre	335	0.21
	8026	Barnby Street	527	0.33
	29508	Church Street	273	0.17
	8034	Plaistow Grove	321	0.20
	8036	Caistor Park Road	203	0.13
PLASSN	26188	Plaistow Station	270	0.17
	8042	Victoria Road	210	0.13
	8097	Kennedy Close	167	0.10
	8098	Balaam Street	149	0.09
	8100	Perth Road	256	0.16
PLASGG	8102	Barking Road	264	0.16
	8104	Beaumont Road	180	0.11
	8108	Newham University Hospital	262	0.16
PRLNBR	8110	Bennett Road	339	0.21
	BP5263	Newham Leisure Centre	122	0.08
	36819	Colman Road	379	0.24
	36818	Beckton School	259	0.16
	36830	Beckton District Park	345	0.21
	36831	Dove Approach	180	0.11
	36833	Swallow Street	495	0.31
	LE215	Kingsford Way	221	0.14
BCKTBS	BP5195	Beckton Bus Station	598	0.37
	37125	Beckton Station	276	0.17
	91521	Covelees Wall	371	0.23
CYPSWP	BP093	Horse Leaze	166	0.10
	BP770	Gallions Reach Roundabout	317	0.20
	BP5108	Gallions Reach Station	352	0.22
	BP5354	Armada Point	263	0.16
	BP5372	Beckton Dlr Depot	613	0.38
GALRSP	BP4622	Gallions Reach Shopping Park	655	0.41
	BP1995	Beckton Triangle Retail Park	1716	1.07
EBECSY	BP556	Sainsbury's East Beckton	442	0.27
Total Route Mileage - Back Direction			11526 metres	7.16 miles