

SECTION 2: PART A

SERVICE SPECIFICATION FOR ROUTE No. 235

CONTENTS

	Page
1. Tenders Required	2
2. Proposed Changes	2
3. Terminals	3
4. Days of Operation	3
5. Vehicle Type	4
6. Frequencies	4
7. Minimum Performance Standards	14
8. Running Times	15
9. Layovers	15
10. Timing Constraints	15
11. Control Strategy	16
12. Operational Considerations	16
13. Stopping Arrangements	16
14. Timing Points and Mileages	17
15. Vehicle Livery	17
16. Requirements for Registration	18
 <u>Appendices</u>	
A. Route Record	19
B. Sample Running Times for Route No. 235	29

This document should be read in conjunction with the Corporation's Guide for Tenderers (Part A: Explanatory Notes - Service Requirements). Where appropriate, reference is made to the relevant section.

1. TENDERS REQUIRED

This document describes the service for which the Corporation requires Tenders and Tenderers **must** submit a fully compliant bid. In addition, Tenderers **may** wish to draw upon their local knowledge to submit alternative bids which offer improved value for money in meeting passenger needs. These might incorporate, for example, different timings, frequencies, route structures and / or vehicles. The Corporation will welcome such bids and give them careful consideration.

For more information, please refer to Section 2.1 of Part A of the Guide for Tenderers.

2. PROPOSED CHANGES

At this time, no changes are proposed to the existing service for introduction prior to the commencement of the new Route Agreement for Route No. 235.

Tenderers should note that the following alterations (subject to consultation) are proposed as part of this Service Specification for introduction with the new Route Agreement:

Two routeing options are specified:

Option 1:

- No change to current structure and frequencies.

Option 2:

- Route No. 235 will operate between Sunbury Village, Three Fishes and North Brentford Quarter. Ex Sunbury Village, Three Fishes, Route No. 235 operates via current line of routeing to Brentford High Street and then operates via Ealing Road and Great West Road to North Brentford Quarter. Ex North Brentford Quarter, Route No. 235 will operate via Great West Road and Ealing Road to rejoin current line of routeing at Brentford High Street. **Please see Appendix A for full details regarding routeing and stands;**
- Standing and stopping arrangements at North Brentford Quarter are to be finalised. These will be confirmed with the successful Tenderer. Tenderers should assume that a suitable stand will be provided within 5 minutes running time in each direction from Great West Road in the North Brentford Quarter area.

Options 1 & 2:

- An additional earlier journey is specified daily in both directions;
- No meal reliefs to be taken at Sunbury Village, Three Fishes;
- Single deck, dual door, low floor 55 capacity vehicles are specified subject to a satisfactory route test;
- **Tenderers must identify the cost of both options separately.** However any significant effects on cost of the short term nature of the extended route structure will be negotiated with shortlisted Tenderers during the evaluation and with the successful Tenderer post award as appropriate.

3. TERMINALS

Under Option 1, Route No. 235 will operate between Sunbury Village, Three Fishes and Brentford, County Court.

Under Option 2, Route No. 235 will operate between Sunbury Village, Three Fishes and North Brentford Quarter.

Tenderers should assume that a suitable stand will be provided within 5 minutes running time in each direction from Great West Road in the North Brentford Quarter area.

Full details of the route to be followed, the permitted terminal workings and the available stands are shown at Appendix A. Tenderers should particularly note the information relating to the shared usage of stands, the taking of meal reliefs and the use of ferry vehicles.

4. DAYS OF OPERATION

One timetable must be offered for Route No. 235 which will operate as follows:

DAY OF OPERATION	OPTION 1	OPTION 2
Mondays to Fridays	Section 6.1	Section 6.1
Mondays to Fridays Schooldays	Section 6.2	Section 6.2
Saturdays & Good Friday	Section 6.3	Section 6.3
Sundays	Section 6.4	Section 6.4
Christmas Day	No service	No service
Boxing Day	Section 6.5	Section 6.5
Other Public Holidays	Sunday service	Sunday service

5. VEHICLE TYPE

Please refer to Section 2.5 of Part A of the Guide for Tenderers.

Route No. 235 is currently approved for vehicles which are a maximum of 10.2 metres long and 2.5 metres wide. A formal route test will be required for vehicles which exceed these dimensions for any manoeuvres and roads previously unserved by bus (i.e. the North Brentford Quarter area). This will be arranged with the successful Tenderer.

The service requirement set out in Section 6 assumes that dual door, single deck buses with a minimum capacity of 55, of which approximately 28 should be seated, will be used on this route. Luggage space should also be provided.

Tenderers must submit proposals based on new vehicles. These must be of a low floor design and be accessible to wheelchairs by means of a powered ramp.

Bids for both conventional diesel powered vehicles and diesel-electric hybrid vehicles should be submitted and separate prices for both types are required.

Bids based on a mix of hybrid and conventional vehicles would be welcomed, subject to a minimum of 10 hybrid powered vehicles being offered for this route (full hybrid operation should be offered for routes with a vehicle requirement of less than 10).

Tenderers should refer to the vehicle design (including accessibility) features contained in Schedule II to Annex B of the Framework Agreement and Section 2 Part B of the Master ITT (Version 2 issued June 2005).

Tenderers may also submit bids based on using existing vehicles. Tenderers are asked to specify what refurbishment would be carried out on existing buses and the expected timescale of those works. See Master ITT (Version 2 issued June 2005).

6. FREQUENCIES

The level of service (e.g. every 15 minutes) required by the Corporation is described in terms of the interval between departures. Whilst a completely regular service at the specified frequency should be possible at most times, occasionally a bus may be timetabled to depart up to five minutes earlier or later than the regular time.

Tenderers should note that when the specified frequency changes (e.g. between the peak and midday periods), the scheduled interval between buses should never be greater than that provided by the lower of the two frequencies **AT ANY POINT ON THE ROUTE.**

Tenderers should note that unless otherwise stated **all** journeys should operate between the terminal points defined in each direction.

Option 1

6.1 Mondays to Fridays

1. Sunbury Village, Three Fishes to Brentford, County Court

0505 - 0530	Every 20 minutes
0531 - 0600	Every 12 minutes
0601 - 0700	Every 10 minutes
0701 - 1830	Every 8 minutes
1831 - 1900	Every 10 minutes
1901 - 0005	Every 12 minutes

First departure from Sunbury Village, Three Fishes no later than 0510.
Last departure from Sunbury Village, Three Fishes no earlier than 2400.

Tenderers should ensure that buses are scheduled to be no more than 8 minutes apart at Hounslow Bus Station, London Road between 0750 and 0920, and between 1530 and 1700.

2. Brentford, County Court to Sunbury Village, Three Fishes

0505 - 0530	Every 20 minutes
0531 - 0600	Every 12 minutes
0601 - 0700	Every 10 minutes
0701 - 1830	Every 8 minutes
1831 - 1900	Every 10 minutes
1901 - 0010	Every 12 minutes

First departure from Brentford, County Court no later than 0510.
Last departure from Brentford, County Court no earlier than 0005.

Tenderers should ensure that buses are scheduled to be no more than 8 minutes apart at Feltham Station between 0750 and 0930 and between 1530 and 1700.

Option 2

6.1 Mondays to Fridays

1. Sunbury Village, Three Fishes to North Brentford Quarter

0505 - 0530	Every 20 minutes
0531 - 0600	Every 12 minutes
0601 - 0700	Every 10 minutes
0701 - 1830	Every 8 minutes
1831 - 1900	Every 10 minutes
1901 - 0005	Every 12 minutes

First departure from Sunbury Village, Three Fishes no later than 0510.
Last departure from Sunbury Village, Three Fishes no earlier than 2400.

Tenderers should ensure that buses are scheduled to be no more than 8 minutes apart at Hounslow Bus Station, London Road between 0750 and 0920, and between 1530 and 1700.

2. North Brentford Quarter to Sunbury Village, Three Fishes

0500 - 0525	Every 20 minutes
0526 - 0555	Every 12 minutes
0556 - 0655	Every 10 minutes
0656 - 1825	Every 8 minutes
1826 - 1855	Every 10 minutes
1856 - 0005	Every 12 minutes

First departure from North Brentford Quarter no later than 0505.
Last departure from North Brentford Quarter no earlier than 2400.

Tenderers should ensure that buses are scheduled to be no more than 8 minutes apart at Feltham Station between 0750 and 0930 and between 1530 and 1700.

Option 1

6.2 Mondays to Fridays Schooldays only

1. Sunbury Village, Three Fishes to Brentford, County Court
0726 One journey
2. Brentford, County Court to Sunbury Village, Three Fishes
1541 One journey

The timetable for Route No. 235 is specifically designed to meet the start and finish times of schools in the area. It is possible that these times may be altered during the life of the contract. Tenderers should indicate whether they are able to adjust the times of the specified journeys by up to 20 minutes (earlier or later) without alteration to the contract price. It may also be necessary for afternoon journeys to operate earlier than stated at the end of term and on other occasions at short notice.

Option 2

6.2 Mondays to Fridays Schooldays only

1. Sunbury Village, Three Fishes to North Brentford Quarter
0726 One journey
2. North Brentford Quarter to Sunbury Village, Three Fishes
1536 One journey

The timetable for Route No. 235 is specifically designed to meet the start and finish times of schools in the area. It is possible that these times may be altered during the life of the contract. Tenderers should indicate whether they are able to adjust the times of the specified journeys by up to 20 minutes (earlier or later) without alteration to the contract price. It may also be necessary for afternoon journeys to operate earlier than stated at the end of term and on other occasions at short notice.

Option 1

6.3 Saturdays & Good Friday

1. Sunbury Village, Three Fishes to Brentford, County Court

0505 - 0530	Every 20 minutes
0531 - 0700	Every 15 minutes
0701 - 0800	Every 12 minutes
0801 - 0840	Every 10 minutes
0841 - 1730	Every 8 minutes
1731 - 1830	Every 10 minutes
1831 - 0005	Every 12 minutes

First departure from Sunbury Village, Three Fishes no later than 0510.
Last departure from Sunbury Village, Three Fishes no earlier than 2400.

Tenderers should ensure that buses are scheduled to be no more than 8 minutes apart at Hounslow Bus Station, London Road between 0945 and 1100.

2. Brentford, County Court to Sunbury Village, Three Fishes

0505 - 0530	Every 20 minutes
0531 - 0700	Every 15 minutes
0701 - 0800	Every 12 minutes
0801 - 0830	Every 10 minutes
0831 - 1730	Every 8 minutes
1731 - 1800	Every 10 minutes
1801 - 0010	Every 12 minutes

First departure from Brentford, County Court no later than 0510.
Last departure from Brentford, County Court no earlier than 0005.

Tenderers should ensure that buses are scheduled to be no more than 8 minutes apart at Feltham Station between 0945 and 1100.

Option 2

6.3 Saturdays & Good Friday

1. Sunbury Village, Three Fishes to North Brentford Quarter

0505 - 0530	Every 20 minutes
0531 - 0700	Every 15 minutes
0701 - 0800	Every 12 minutes
0801 - 0840	Every 10 minutes
0841 - 1730	Every 8 minutes
1731 - 1830	Every 10 minutes
1831 - 0005	Every 12 minutes

First departure from Sunbury Village, Three Fishes no later than 0510.
Last departure from Sunbury Village, Three Fishes no earlier than 2400.

Tenderers should ensure that buses are scheduled to be no more than 8 minutes apart at Hounslow Bus Station, London Road between 0945 and 1100.

2. North Brentford Quarter to Sunbury Village, Three Fishes

0500 - 0525	Every 20 minutes
0526 - 0655	Every 15 minutes
0656 - 0755	Every 12 minutes
0756 - 0825	Every 10 minutes
0826 - 1725	Every 8 minutes
1726 - 1755	Every 10 minutes
1756 - 0005	Every 12 minutes

First departure from North Brentford Quarter no later than 0505.
Last departure from North Brentford Quarter no earlier than 2400.

Tenderers should ensure that buses are scheduled to be no more than 8 minutes apart at Feltham Station between 0945 and 1100.

Option 1

6.4 Sundays

1. Sunbury Village, Three Fishes to Brentford, County Court

0605 - 0730	Every 20 minutes
0731 - 0930	Every 15 minutes
0931 - 0005	Every 12 minutes

First departure from Sunbury Village, Three Fishes no later than 0610.
Last departure from Sunbury Village, Three Fishes no earlier than 2400.

Tenderers should ensure that buses are scheduled to be no more than 12 minutes apart at Hounslow Bus Station, London Road between 1010 and 1130.

2. Brentford, County Court to Sunbury Village, Three Fishes

0605 - 0730	Every 20 minutes
0731 - 0930	Every 15 minutes
0931 - 0010	Every 12 minutes

First departure from Brentford, County Court no later than 0610.
Last departure from Brentford, County Court no earlier than 0005.

Tenderers should ensure that buses are scheduled to be no more than 12 minutes apart at Feltham Station between 1010 and 1130.

Option 2

6.4 Sundays

1. Sunbury Village, Three Fishes to North Brentford Quarter

0605 - 0730	Every 20 minutes
0731 - 0930	Every 15 minutes
0931 - 0005	Every 12 minutes

First departure from Sunbury Village, Three Fishes no later than 0610.
Last departure from Sunbury Village, Three Fishes no earlier than 2400.

Tenderers should ensure that buses are scheduled to be no more than 12 minutes apart at Hounslow Bus Station, London Road between 1010 and 1130.

2. North Brentford Quarter to Sunbury Village, Three Fishes

0600 - 0725	Every 20 minutes
0726 - 0925	Every 15 minutes
0926 - 0005	Every 12 minutes

First departure from North Brentford Quarter no later than 0605.
Last departure from North Brentford Quarter no earlier than 2400.

Tenderers should ensure that buses are scheduled to be no more than 12 minutes apart at Feltham Station between 1010 and 1130.

Option 1

6.5 Boxing Day

1. Sunbury Village, Three Fishes to Brentford, County Court

0825 - 0930	Every 15 minutes
0931 - 0005	Every 12 minutes

First departure from Sunbury Village, Three Fishes no later than 0830.
Last departure from Sunbury Village, Three Fishes no earlier than 2400.

Tenderers should ensure that buses are scheduled to be no more than 12 minutes apart at Hounslow Bus Station, London Road between 1010 and 1130.

2. Brentford, County Court to Sunbury Village, Three Fishes

0820 - 0925	Every 15 minutes
0926 - 0010	Every 12 minutes

First departure from Brentford, County Court no later than 0825.
Last departure from Brentford, County Court no earlier than 0005.

Tenderers should ensure that buses are scheduled to be no more than 12 minutes apart at Feltham Station between 1010 and 1130.

Option 2

6.5 Boxing Day

1. Sunbury Village, Three Fishes to North Brentford Quarter

0825 - 0930	Every 15 minutes
0931 - 0005	Every 12 minutes

First departure from Sunbury Village, Three Fishes no later than 0830.
Last departure from Sunbury Village, Three Fishes no earlier than 2400.

Tenderers should ensure that buses are scheduled to be no more than 12 minutes apart at Hounslow Bus Station, London Road between 1010 and 1130.

2. North Brentford Quarter to Sunbury Village, Three Fishes

0815 - 0920	Every 15 minutes
0921 - 0005	Every 12 minutes

First departure from North Brentford Quarter no later than 0820.
Last departure from North Brentford Quarter no earlier than 2400.

Tenderers should ensure that buses are scheduled to be no more than 12 minutes apart at Feltham Station between 1010 and 1130.

7. MINIMUM PERFORMANCE STANDARDS

Please refer to Section 2.7 of Part A of the Guide for Tenderers.

Tenderers should note that the objective of the Operator of Route No. 235 shall be to operate all scheduled mileage and adhere **fully** to the published timetable. The Operator must use its best endeavours to achieve this.

The **minimum** standards of acceptable performance for Route No. 235 (**Options 1 & 2**) shall be:

Average Excess Wait Time:	No more than 1.10 minutes
Minimum Operated Mileage:	No less than 98.00%

or as notified by the Corporation from time to time. The Operator will be required to achieve or better the standards.

QSI Thresholds

The QSI threshold is the standard of performance to be achieved by the operator in order to qualify for an automatic contract extension (in accordance with Schedule IX of the Framework Agreement).

Average Excess Wait Time Threshold (**Options 1 & 2**) = 0.95 minutes

The offer of an extension is additionally subject to proposed legislative changes to allow County Council funding of seven year bus contracts. Should legislation not, in the opinion of LBSL or the County Council, permit funding of the extension period then, notwithstanding the above, an extension will not be offered. However, all other incentive provisions will continue to apply.

Summary of proposed QSI coverage: Route No. 235

Note: While London Buses undertakes to carry out QSI surveys at the times and locations specified below, it may prove impossible to rearrange a survey cancelled or nullified at short notice.

Survey locations - options 1 & 2

Eastbound (towards Brentford)

Feltham High Street \$
Hounslow \$

Westbound (towards Sunbury Village)

Brentford
Hounslow \$
Feltham High Street \$

Total scheduled manual QSI surveys per quarter =80.

\$ Observed simultaneously in both directions. Counted as two surveys.

8. RUNNING TIMES

Extracts from the public timetable with sample running times for Route No. 235 are attached at Appendix B. This gives an indication of the time required to travel the route. Attention is drawn to the variations in running times at different times of the day. Please refer to Section 2.8 of Part A of the Guide for Tenderers for further information.

Tenderers should devise their own running times for the section of Route No. 235 between Brentford High Street and North Brentford Quarter (**Option 2**).

Tenderers should carefully check the existing running times to ensure that they are appropriate in present traffic conditions. Tenderers should particularly check the existing running times for the Mondays to Fridays PM peak.

It is expected that any changes to these running times can be accommodated within existing cycle times.

When reviewing existing, and devising new, running times Tenderers should refer to:

- the minimum performance standards for Route No. 235 in Section 7 above;
- the historical performance data provided in Section 1 Part B of the introduction to this ITT;
- the paragraph in Section 12 referring to the proposed extension of the Cashless Boarding zone throughout the whole of the London area.

Tenderers may consider if school summer holiday schedules, incorporating running time reductions, are desirable for this route. In this event, schedules and costs must be submitted separately.

9. LAYOVERS

Under normal circumstances, layover time on stands and at bus stations should be restricted to that required to provide a reliable service. Longer layovers for any other purpose may only be taken with the permission of the Corporation.

10. TIMING CONSTRAINTS

Route No. 235 should interwork with Route No. 237 between Hounslow Heath, Hussar and Isleworth, Busch Corner during all periods apart from early Saturday and Sunday early morning where they should be best separated.

Tenderers submitting bids should bear this requirement in mind when compiling schedules. This requirement will be negotiated with the successful Tenderer for this route to ensure that optimal interworking/separation is delivered within its schedules.

11. CONTROL STRATEGY

Route No. 235 can suffer from the effects of traffic congestion, making some form of route control essential in order to achieve or better the minimum performance standards for this route.

Tenderers should submit proposals on the control strategy they intend to adopt and the type of control they would intend to use by completing the form provided in Section 3: Part 7 of this ITT. The cost of this control should be included within the main Tender price.

Tenderers should also indicate how they intend to facilitate driver changeovers and meal reliefs for this route.

Further information is provided in Section 2.11 of Part A of the Guide for Tenderers.

12. OPERATIONAL CONSIDERATIONS

Tenderers should note the following operating considerations affecting Route No. 235:

- Route No. 235 can be subject to traffic delays in the Hounslow and Brentford areas.

Tenderers should also note the following factors / events which may have an impact on Route No. 235 in the foreseeable future:

- The North Brentford Quarter development on Great West Road is likely to be completed in approximately two years time. Standing and relief arrangements are yet to be determined. The successful Tenderer will be advised of the details when they are confirmed. Tenderers should assume that a suitable stand will be provided within 5 minutes running time in each direction from Great West Road in the North Brentford Quarter area;
- It is anticipated that Cashless Boarding will be extended throughout London at some stage during the lifetime of this contract. **This is expected to lead to significant savings in running and recovery times to bus routes, and, therefore, potential resource (cycle time and PVR) savings are expected. Tenderers are required to identify and submit the level of savings per vehicle that could be achieved by reducing peak vehicle requirement, and/or how reliability targets could be revised when the Scheme is introduced.**

The above factors have been included to assist Tenderers and represents the information currently available to the Corporation. Tenderers should make their own enquiries about events which may impact upon the route and should form their own views about their likely effect upon it.

13. STOPPING ARRANGEMENTS

Buses operating on Route No. 235 must serve all stops on the line of route designated for the route.

14. TIMING POINTS & MILEAGES

Timing Points

The required timing points (and codes) are shown in Caesar.

Mileages for Route No. 235

Option 1

Sunbury Village, Three Fishes to Brentford, County Court	9.2 miles
Brentford, County Court to Sunbury Village, Three Fishes	9.2 miles

Option 2

North Brentford Quarter to Sunbury Village, Three Fishes	10.0 miles
Sunbury Village, Three Fishes to North Brentford Quarter	10.0 miles

Tenderers should note that:

- these measurements are believed to be accurate to within 0.5 miles, but no warranty or representation as to accuracy is given;
- out of service stand workings have not been measured and are not included within the above measurements;
- if alternative or additional measurements are used by the Tenderer, these must be stated in the tender submission;
- point to point measurements pertaining to recognised curtailment points or alternative terminals will be agreed with the successful Tenderer once the contract has been awarded.

15. VEHICLE LIVERY

All vehicles to be used on Route No. 235 from the commencement of the new Route Agreement must be in a livery that is exclusively Corporation red. The paint should be matched accurately to the colour as defined by the following manufacturer's specifications:

ICI London Bus Red P498 FPF 3

Other manufacturers should also be able to produce this specification from the ICI colour chart.

This requirement does not include the lower panels which may be in a different colour but which shall not exceed 50cm in height, or the rooftop which should be painted white so as to reduce temperatures inside the vehicle during the summer months.

The positioning and size of Operators' logos are to be agreed between the Operator and the Corporation and, where possible, these should be above the front doors on the nearside of the vehicles and above the drivers' offside cab windows.

All livery proposals must be submitted to the Contracts Tendering Manager for approval.

16. REQUIREMENTS FOR REGISTRATION

The section of Route No. 235 between Sunbury Village, Three Fishes and the Surrey County Boundary at Grovely Road / Sunbury Road will need to be registered with the Traffic Commissioner for Metropolitan and South East Traffic Area 56 days before the operation commences.

Copies of the registration should be sent to:

Huw Bounds
The South Eastern and Metropolitan Traffic Area Office
Hillcrest House
386 Harehills Lane
Leeds
LS9 9NF

And copies of the Registration should be sent to:

Barry Skinner (Licensing Manager)
TfL Surface Transport Communications
Floor 11
Palestra
197 Blackfriars Road
London
SE1 8NJ

Laurie James
Principal Transport Officer
Passenger Transport
Surrey County Council
County Hall
Penrhyn Road
Kingston Upon Thames
KT1 2DY

The cost of this should be met by the Operator.

APPENDIX A: ROUTE RECORD

OPTION 1

ROUTE NO. 235: SUNBURY VILLAGE, THREE FISHES - BRENTFORD, COUNTY COURT

STREETS TRAVERSED

Towards Brentford, County Court: Green Street, Sunbury Cross, Vicarage Road, Groveley Road, Sunbury Road, Feltham High Street, Hounslow Road, Harlington Road West, Staines Road, Grove Road, Hanworth Road, Hounslow High Street, London Road, Brentford High Street, Alexandra Road, Back Lane.

Towards Sunbury Village, Three Fishes: Back Lane, St Paul's Road, Half Acre, Brentford High Street, London Road, Hounslow High Street, Douglas Road, Grove Road, Staines Road, Harlington Road West, Hounslow Road, Feltham High Street, Sunbury Road, Groveley Road, Vicarage Road, Sunbury Cross, Green Street.

STANDS, TURNING POINTS AND DESTINATION BLINDS

Tenderers should note that under normal circumstances, the specific restrictions relating to each stand will apply to the whole stand at all times. Any variation to such standing arrangements must be agreed by the Corporation. In addition, Tenderers should note the following general requirements:

- 1) Drivers MUST switch off engines during layover periods at bus stations or on stands.
- 2) No meal reliefs may be taken on any stand (on or off line of route) without the permission of the Corporation.
- 3) No crew ferry vehicles may enter any stand (on or off line of route) without the permission of the Corporation.
- 4) Destination blind displays to be used are shown under each stand description. Tenderers may suggest, within their bids, alternative blind displays.
- 5) The intermediate (also known as via) blind display to be used on the nearside of the vehicle is shown in the box below:

235 via Hounslow

For further information, please refer to Annex C of the Framework Agreement: General Conditions relating to the use of London Buses' Bus Stations and Stands.

SUNBURY VILLAGE, THREE FISHES

Public stand for three buses on east side of Green Street, commencing 15 metres after entrance to public car park opposite Forge Lane and extending 37 metres north.

Buses proceed from Green Street direct to stand, departing via Green Street, Church Street and Thames Street to Green Street. Set down and pick up in Green Street.

AVAILABILITY:	At any time.
OPERATING RESTRICTIONS:	No more than 2 buses on Route No. 235 should be scheduled to stand at any one time. Please note that relief breaks are not to be taken at Sunbury Village.
MEAL RELIEFS:	No meal relief vehicles to stand at any time.
FERRY VEHICLES:	No ferry vehicles to park on stand at any time.
OTHER INFORMATION:	No toilet facilities are currently available.
BLIND DISPLAY:	Sunbury Village

SUNBURY CROSS ROUNDABOUT (from Brentford, County Court)

Buses proceed from Vicarage Road via Sunbury Cross departing to Vicarage Road. Set down and pick up in Vicarage Road.

AVAILABILITY:	At any time.
OPERATING RESTRICTIONS:	Turning Point Only - Buses must not stand.
BLIND DISPLAY:	Sunbury Cross

LOWER FELTHAM, CHERTSEY ROAD (from Brentford, County Court)

Public stand on east side of Walton Gardens, commencing at lamp standard No. 15, 22 metres north of centre of Shelson Avenue.

Buses proceed from Feltham High Street via Ashford Road, Chertsey Road and Walton Gardens to stand, departing via Walton Gardens, Shelson Avenue, Chertsey Road and Ashford Road to Feltham High Street. Set down in Feltham High Street, at stop R and pick up in Feltham High Street, at stop T.

AVAILABILITY:	At any time.
OPERATING RESTRICTIONS:	To be used for unscheduled curtailments only.
MEAL RELIEFS:	No meal relief vehicles to stand at any time.
FERRY VEHICLES:	No ferry vehicles to park on stand at any time.
BLIND DISPLAY:	Lower Feltham

HOUNSLOW HEATH, HUSSAR

Public stand for 2 buses on east side of Barrack Road outside The Hussar public house commencing approximately 20 metres north of Staines Road and extending 20 metres north.

From Brentford, County Court

Buses proceed from Staines Road via Martindale Road, Corporation Avenue and Barrack Road to stand, departing via Barrack Road to Staines Road. Set down in Staines Road, at stop N and pick up in Staines Road, at stop C.

From Sunbury Village, Three Fishes

Buses proceed from Staines Road via Martindale Road, Corporation Avenue and Barrack Road to stand, departing via Barrack Road to Staines Road. Set down in Staines Road, at stop D and pick up in Staines Road, at stop P.

AVAILABILITY:	At any time.
OPERATING RESTRICTIONS:	To be used for unscheduled curtailments only.
MEAL RELIEFS:	No meal relief vehicles to stand at any time.
FERRY VEHICLES:	No ferry vehicles to park on stand at any time.
BLIND DISPLAY:	Hounslow Heath

HOUNSLOW, BELL CORNER (from Sunbury Village, Three Fishes)

Private stand for 3 buses in separate 12-metre marked bays in Bus Parking Area on north side of Bath Road adjacent to Bath Road Car Park and opposite Nos. 22-36.

Buses proceed from Staines Road via Grove Road, Bell Road, Bath Road and Bell Corner to stand, departing via Bell Corner, Bath Road and Steve Biko Way to Staines Road. Set down in Staines Road, at stop U and pick up in Staines Road.

AVAILABILITY:	At any time.
OPERATING RESTRICTIONS:	To be used for unscheduled curtailments only.
MEAL RELIEFS:	No meal relief vehicles to stand at any time.
FERRY VEHICLES:	No ferry vehicles to park on stand at any time.
BLIND DISPLAY:	Hounslow, Bell Corner

HOUNSLOW BUS STATION

Private stand for 9 buses in marked bays in bus parking area in Hounslow Bus Station on north side of London Road.

From Brentford, County Court

Buses proceed from London Road via Hounslow Bus Station to stand, departing via Kingsley Road to London Road. Set down in London Road, at stop G and pick up in London Road, at stop F.

From Sunbury Village, Three Fishes

Buses proceed from London Road via Hounslow Bus Station to stand, departing via Hounslow Bus Station and Kingsley Road to Hounslow High Street. Set down in Hounslow High Street, at alighting point and pick up in Hounslow High Street, at stop H.

AVAILABILITY:	At any time.
OPERATING RESTRICTIONS:	To be used for unscheduled curtailments only.
MEAL RELIEFS:	No meal relief vehicles to stand at any time.
FERRY VEHICLES:	No ferry vehicles to park on stand at any time.
BLIND DISPLAY:	Hounslow Bus Station

ISLEWORTH, FIRE STATION (from Sunbury Village, Three Fishes)

Public stand on east side of Spring Grove Road, commencing 34 metres south of the junction with Villiers Road and extending 11 metres south, opposite Isleworth Fire Station. Buses proceed from London Road via Thornbury Road and Spring Grove Road to stand, departing via Spring Grove Road to London Road. Set down in London Road, at stop J and pick up in London Road, at stop H.

AVAILABILITY:	At any time.
OPERATING RESTRICTIONS:	To be used for unscheduled curtailments only.
MEAL RELIEFS:	No meal relief vehicles to stand at any time.
FERRY VEHICLES:	No ferry vehicles to park on stand at any time.
BLIND DISPLAY:	Isleworth

ISLEWORTH, BUSCH CORNER (from Sunbury Village, Three Fishes)

Buses proceed from London Road via Epworth Road and Syon Lane departing to London Road. Set down in London Road, at stop T and pick up in London Road, at stop V.

AVAILABILITY:	At any time.
OPERATING RESTRICTIONS:	Turning Point Only - Buses must not stand.
BLIND DISPLAY:	Busch Corner

BRENTFORD, COUNTY COURT

Public stand on south side of Back Lane, commencing 5 metres west of the western kerbline of Alexandra Road and extending 30 metres west.

Buses proceed from Back Lane direct to stand, departing to Back Lane. Set down in Back Lane, at alighting point and pick up in Back Lane, at stop BQ.

AVAILABILITY:	At any time.
OPERATING RESTRICTIONS:	No more than 2 buses on Route No. 235 should be scheduled to stand at any one time.
MEAL RELIEFS:	No meal relief vehicles to stand at any time.
FERRY VEHICLES:	No ferry vehicles to park on stand at any time.
OTHER INFORMATION:	London Buses toilet facilities available 24 hours a day.
BLIND DISPLAY:	Brentford, County Court

APPENDIX A: ROUTE RECORD

OPTION 2

ROUTE No. 235: Sunbury Village, Three Fishes - North Brentford, Quarter

STREETS TRAVERSED

Towards North Brentford, Quarter: Green Street, Sunbury Cross, Vicarage Road, Groveley Road, Sunbury Road, Feltham High Street, Hounslow Road, Harlington Road West, Staines Road, Grove Road, Hanworth Road, Hounslow High Street, London Road, Brentford High Street, Ealing Road, Great West Road.

Towards Sunbury Village, Three Fishes: Great West Road, Ealing Road, Brentford High Street, London Road, Hounslow High Street, Douglas Road, Grove Road, Staines Road, Harlington Road West, Hounslow Road, Feltham High Street, Sunbury Road, Groveley Road, Vicarage Road, Sunbury Cross, Green Street.

STANDS, TURNING POINTS AND DESTINATION BLINDS

Tenderers should note that under normal circumstances, the specific restrictions relating to each stand will apply to the whole stand at all times. Any variation to such standing arrangements must be agreed by the Corporation. In addition, Tenderers should note the following general requirements:

- 1) Drivers MUST switch off engines during layover periods at bus stations or on stands.
- 2) No meal reliefs may be taken on any stand (on or off line of route) without the permission of the Corporation.
- 3) No crew ferry vehicles may enter any stand (on or off line of route) without the permission of the Corporation.
- 4) Destination blind displays to be used are shown under each stand description. Tenderers may suggest, within their bids, alternative blind displays.
- 5) The intermediate (also known as via) blind display to be used on the nearside of the vehicle is shown in the box below:

235 via Hounslow

For further information, please refer to Annex C of the Framework Agreement: General Conditions relating to the use of London Buses' Bus Stations and Stands.

SUNBURY VILLAGE, THREE FISHES

Public stand for three buses on east side of Green Street, commencing 15metres after entrance to public car park opposite Forge Lane and extending 37 metres north.

Buses proceed from Green Street direct to stand, departing via Green Street, Church Street and Thames Street to Green Street. Set down in Green Street and pick up in Green Street.

AVAILABILITY:	At any time.
OPERATING RESTRICTIONS:	No more than 2 buses on Route No. 235 should be scheduled to stand at any one time. Please note that relief breaks are not to be taken at Sunbury Village.
MEAL RELIEFS:	No meal relief vehicles to stand at any time.
FERRY VEHICLES:	No ferry vehicles to park on stand at any time.
OTHER INFORMATION:	No toilet facilities are currently available.
BLIND DISPLAY:	Sunbury Village

SUNBURY CROSS ROUNDABOUT (from North Brentford, Quarter)

Buses proceed from Vicarage Road via Sunbury Cross departing to Vicarage Road. Set down and pick up in Vicarage Road.

AVAILABILITY:	At any time.
OPERATING RESTRICTIONS:	Turning Point Only - Buses must not stand.
BLIND DISPLAY:	Sunbury Cross

LOWER FELTHAM, CHERTSEY ROAD (from North Brentford, Quarter)

Public stand on east side of Walton Gardens, commencing at lamp standard No. 15, 22 metres north of centre of Shelson Avenue.

Buses proceed from Feltham High Street via Ashford Road, Chertsey Road and Walton Gardens to stand, departing via Walton Gardens, Shelson Avenue, Chertsey Road and Ashford Road to Feltham High Street. Set down in Feltham High Street, at stop R and pick up in Feltham High Street, at stop T.

AVAILABILITY:	At any time.
OPERATING RESTRICTIONS:	To be used for unscheduled curtailments only.
MEAL RELIEFS:	No meal relief vehicles to stand at any time.
FERRY VEHICLES:	No ferry vehicles to park on stand at any time.
BLIND DISPLAY:	Lower Feltham

HOUNSLOW HEATH, HUSSAR

Public stand for 2 buses on east side of Barrack Road outside The Hussar public house commencing approximately 20 metres north of Staines Road and extending 20 metres north.

From North Brentford, Quarter

Buses proceed from Staines Road via Martindale Road, Corporation Avenue and Barrack Road to stand, departing via Barrack Road to Staines Road. Set down in Staines Road, at stop N and pick up in Staines Road, at stop C.

From Sunbury Village, Three Fishes

Buses proceed from Staines Road via Martindale Road, Corporation Avenue and Barrack Road to stand, departing via Barrack Road to Staines Road. Set down in Staines Road, at stop D and pick up in Staines Road, at stop P.

AVAILABILITY:	At any time.
OPERATING RESTRICTIONS:	To be used for unscheduled curtailments only.
MEAL RELIEFS:	No meal relief vehicles to stand at any time.
FERRY VEHICLES:	No ferry vehicles to park on stand at any time.
BLIND DISPLAY:	Hounslow Heath

HOUNSLOW, BELL CORNER (from Sunbury Village, Three Fishes)

Private stand for 3 buses in separate 12-metre marked bays in Bus Parking Area on north side of Bath Road adjacent to Bath Road Car Park and opposite Nos. 22-36.

Buses proceed from Staines Road via Grove Road, Bell Road, Bath Road and Bell Corner to stand, departing via Bell Corner, Bath Road and Steve Biko Way to Staines Road. Set down in Staines Road, at stop U and pick up in Staines Road.

AVAILABILITY:	At any time.
OPERATING RESTRICTIONS:	To be used for unscheduled curtailments only.
MEAL RELIEFS:	No meal relief vehicles to stand at any time.
FERRY VEHICLES:	No ferry vehicles to park on stand at any time.
BLIND DISPLAY:	Hounslow, Bell Corner

HOUNSLOW BUS STATION

Private stand for 9 buses in marked bays in bus parking area in Hounslow Bus Station on north side of London Road.

From North Brentford, Quarter

Buses proceed from London Road via Hounslow Bus Station to stand, departing via Kingsley Road to London Road. Set down in London Road, at stop G and pick up in London Road, at stop F.

From Sunbury Village, Three Fishes

Buses proceed from London Road via Hounslow Bus Station to stand, departing via Hounslow Bus Station and Kingsley Road to Hounslow High Street. Set down in Hounslow High Street, at alighting point and pick up in Hounslow High Street, at stop H.

AVAILABILITY:	At any time.
OPERATING RESTRICTIONS:	Unscheduled curtailments only.
MEAL RELIEFS:	No meal relief vehicles to stand at any time.
FERRY VEHICLES:	No ferry vehicles to park on stand at any time.
BLIND DISPLAY:	Hounslow Bus Station.

ISLEWORTH, FIRE STATION (from Sunbury Village, Three Fishes)

Public stand on east side of Spring Grove Road, commencing 34 metres south of the junction with Villiers Road and extending 11 metres south, opposite Isleworth Fire Station. Buses proceed from London Road via Thornbury Road and Spring Grove Road to stand, departing via Spring Grove Road to London Road. Set down in London Road, at stop J and pick up in London Road, at stop H.

AVAILABILITY:	At any time.
OPERATING RESTRICTIONS:	To be used for unscheduled curtailments only.
MEAL RELIEFS:	No meal relief vehicles to stand at any time.
FERRY VEHICLES:	No ferry vehicles to park on stand at any time.
BLIND DISPLAY:	Isleworth

ISLEWORTH, BUSCH CORNER (from Sunbury Village, Three Fishes)

Buses proceed from London Road via Epworth Road and Syon Lane departing to London Road. Set down in London Road, at stop T and pick up in London Road, at stop V.

AVAILABILITY:	At any time.
OPERATING RESTRICTIONS:	Turning Point Only - Buses must not stand.
BLIND DISPLAY:	Busch Corner

BRENTFORD, COUNTY COURT

Public stand on south side of Back Lane, commencing 5 metres west of the western kerbline of Alexandra Road and extending 30 metres west.

Buses proceed from Back Lane direct to stand, departing to Back Lane. Set down pick up in Back Lane.

AVAILABILITY:	At any time.
OPERATING RESTRICTIONS:	To be used for unscheduled curtailments only.
MEAL RELIEFS:	No meal relief vehicles to stand at any time.
FERRY VEHICLES:	No ferry vehicles to park on stand at any time.
BLIND DISPLAY:	Brentford, County Court

NORTH BRENTFORD QUARTER

Tenderers should assume that a suitable stand will be provided within 5 minutes running time in each direction from Great West Road in the North Brentford Quarter area.

Public stand for 2 buses.

Buses proceed from Great West Road direct to stand, departing from stand to Great West Road. Set down and pick up in Great West Road.

Tenderers should assume that the following will apply:

AVAILABILITY:	At any time.
OPERATING RESTRICTIONS:	No more than 2 buses on Route No. 235 should be scheduled to stand at any one time.
MEAL RELIEFS:	No meal relief vehicles to stand at any time.
FERRY VEHICLES:	No ferry vehicles to park on stand at any time.
OTHER INFORMATION:	Toilet facilities to be confirmed.
BLIND DISPLAY:	North Brentford Quarter

APPENDIX B: SAMPLE RUNNING TIMES FOR ROUTE No. 235

(based on current schedule)

MONDAYS TO FRIDAYS

1. Sunbury Village, Three Fishes to Brentford, County Court

	Typical early morning	Longest morning peak	Typical interpeak	Longest afternoon peak	Typical late evening
Sunbury Village <i>Three Fishes</i>	0530	0758	1200	1656	2257
Sunbury Cross	0534	0806	1204	1702	2301
Lower Feltham <i>Three Horseshoes</i>	0539	0814	1212	1710	2306
Feltham Station	0542	0821	1218	1716	2309
Hounslow Heath <i>Hussar</i>	0548	0830	1225	1723	2314
Hounslow Bus Station	0558	0843	1238	1738	2324
Isleworth <i>Fire Station</i>	0601	0847	1242	1742	2327
Isleworth <i>Busch Corner</i>	0604	0851	1245	1745	2330
Brentford <i>County Court</i>	0609	0859	1252	1752	2333
	39 minutes	61 minutes	52 minutes	56 minutes	36 minutes

2. Brentford, County Court to Sunbury Village, Three Fishes

	Typical early morning	Longest morning peak	Typical interpeak	Longest afternoon peak	Typical late evening
Brentford <i>County Court</i>	0530	0758	1158	1702	2303
Isleworth <i>Busch Corner</i>	0533	0805	1205	1709	2306
Isleworth <i>Fire Station</i>	0535	0810	1209	1715	2309
Hounslow <i>Bus Station</i>	0538	0816	1214	1723	2311
Hounslow Heath <i>Hussar</i>	0549	0828	1227	1738	2322
Feltham Station	0555	0838	1237	1748	2328
Lower Feltham <i>Three Horseshoes</i>	0559	0844	1241	1754	2332
Sunbury Cross	0603	0849	1245	1801	2336
Sunbury Village <i>Three Fishes</i>	0607	0857	1250	1807	2340
	37 minutes	59 minutes	52 minutes	65 minutes	37 minutes

SATURDAYS

1. Sunbury Village, Three Fishes to Brentford, County Court

	Typical early morning	Typical late AM shopping period	Typical PM shopping period	Typical late evening
Sunbury Village <i>Three Fishes</i>	0530	1056	1256	2257
Sunbury Cross	0534	1100	1300	2301
Lower Feltham <i>Three Horseshoes</i>	0539	1108	1308	2306
Feltham Station	0542	1114	1314	2309
Hounslow Heath <i>Hussar</i>	0548	1122	1322	2314
Hounslow Bus Station	0558	1138	1338	2324
Isleworth <i>Fire Station</i>	0601	1142	1342	2327
Isleworth <i>Busch Corner</i>	0604	1145	1345	2330
Brentford <i>County Court</i>	0607	1152	1352	2333
	37 minutes	56 minutes	56 minutes	36 minutes

2. Brentford, County Court to Sunbury Village, Three Fishes

	Typical early morning	Typical late AM shopping period	Typical PM shopping period	Typical late evening
Brentford <i>County Court</i>	0530	1102	1302	2303
Isleworth <i>Busch Corner</i>	0533	1109	1309	2306
Isleworth <i>Fire Station</i>	0535	1113	1313	2308
Hounslow <i>Bus Station</i>	0538	1119	1319	2311
Hounslow Heath <i>Hussar</i>	0549	1133	1333	2322
Feltham Station	0555	1143	1343	2328
Lower Feltham <i>Three Horseshoes</i>	0559	1147	1347	2332
Sunbury Cross	0603	1151	1351	2336
Sunbury Village <i>Three Fishes</i>	0607	1156	1356	2340
	37 minutes	54 minutes	54 minutes	37 minutes

SUNDAYS

1. Sunbury Village, Three Fishes to Brentford, County Court

	Typical Early morning	Typical late AM shopping period	Typical PM shopping period	Typical late evening
Sunbury Village <i>Three Fishes</i>	0630	1054	1254	2257
Sunbury Cross	0634	1058	1258	2301
Lower Feltham <i>Three Horseshoes</i>	0639	1105	1305	2306
Feltham Station	0642	1110	1310	2309
Hounslow Heath <i>Hussar</i>	0648	1117	1317	2314
Hounslow Bus Station	0658	1129	1329	2324
Isleworth <i>Fire Station</i>	0701	1133	1333	2327
Isleworth <i>Busch Corner</i>	0704	1136	1336	2330
Brentford <i>County Court</i>	0707	1141	1341	2333
	37 minutes	47 minutes	47 minutes	36 minutes

2. Brentford, County Court to Sunbury Village, Three Fishes

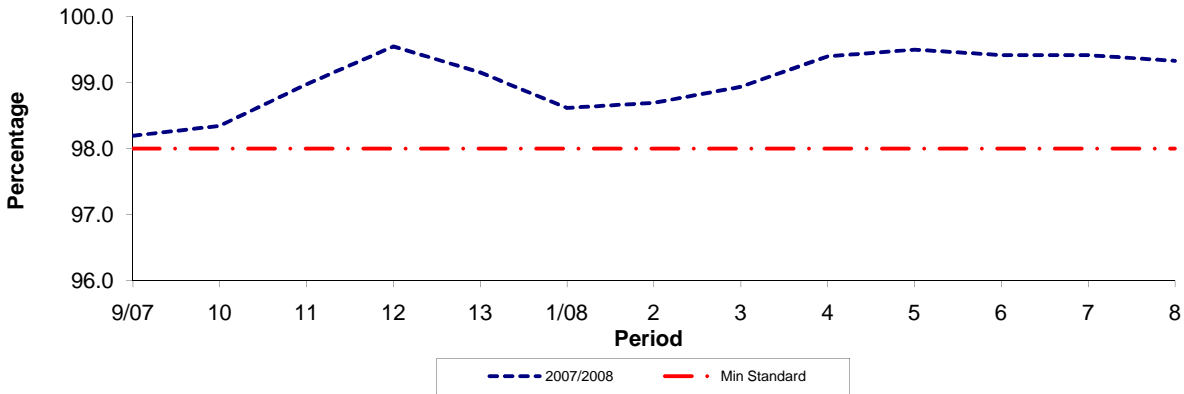
	Typical Early morning	Typical late AM shopping period	Typical PM shopping period	Typical late evening
Brentford <i>County Court</i>	0635	1058	1258	2303
Isleworth <i>Busch Corner</i>	0638	1103	1303	2306
Isleworth <i>Fire Station</i>	0640	1106	1306	2308
Hounslow <i>Bus Station</i>	0643	1110	1310	2311
Hounslow Heath <i>Hussar</i>	0654	1122	1322	2322
Feltham Station	0700	1130	1330	2328
Lower Feltham <i>Three Horseshoes</i>	0704	1135	1335	2332
Sunbury Cross	0708	1139	1339	2336
Sunbury Village <i>Three Fishes</i>	0712	1144	1344	2340
	37 minutes	46 minutes	46 minutes	37 minutes

The above tables have been included to assist Tenderers. They represent the information currently available to the Corporation. Tenderers should form their own views about what is appropriate in terms of running times. (See Section 8.)

PART B - PERFORMANCE STATISTICS

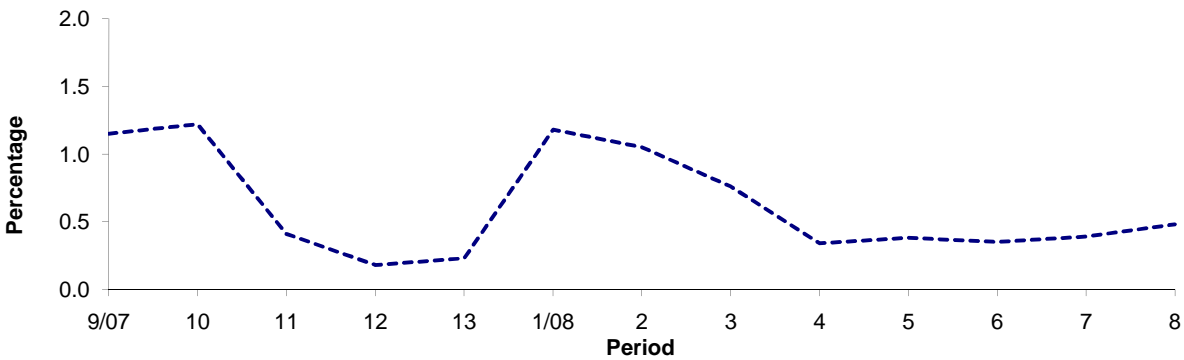
Route 235

Mileage Operated



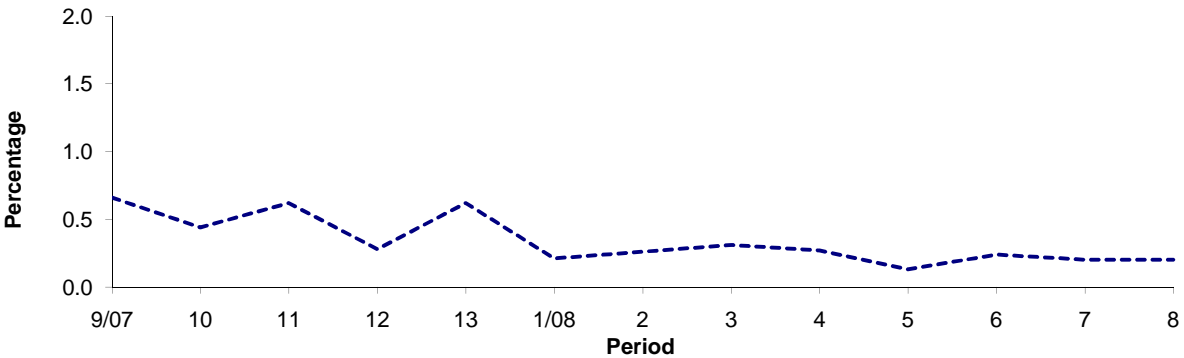
Period	9/07	10	11	12	13	1/08	2	3	4	5	6	7	8
2007/2008	98.19	98.34	98.97	99.54	99.15	98.61	98.69	98.93	99.39	99.49	99.41	99.41	99.32
Min Standard	98.00	98.00	98.00	98.00	98.00	98.00	98.00	98.00	98.00	98.00	98.00	98.00	98.00

Deductible Mileage



Period	9/07	10	11	12	13	1/08	2	3	4	5	6	7	8
2007/2008	1.15	1.22	0.41	0.18	0.23	1.18	1.05	0.76	0.34	0.38	0.35	0.39	0.48

Non Deductible Mileage

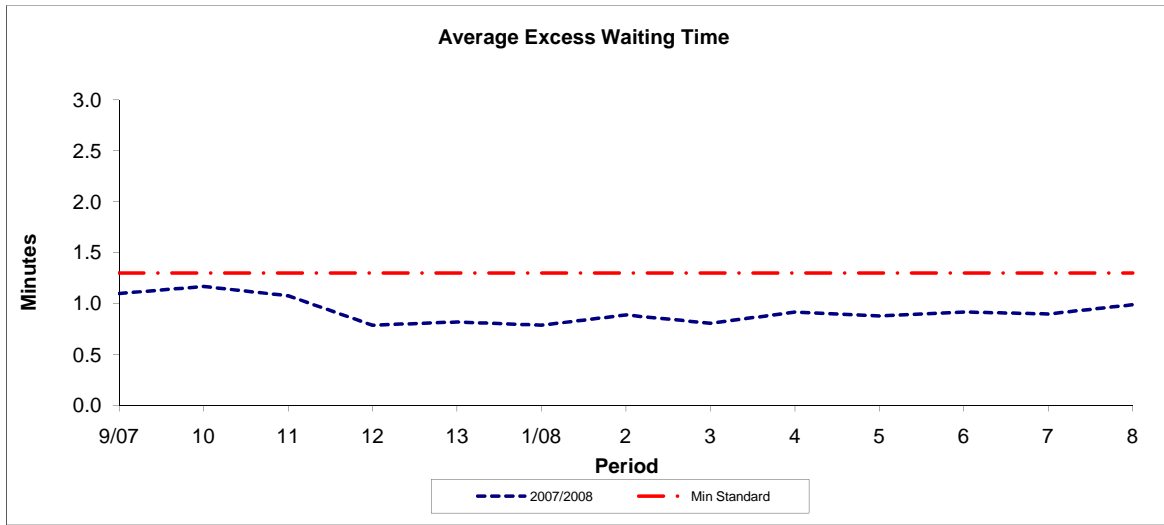


Period	9/07	10	11	12	13	1/08	2	3	4	5	6	7	8
2007/2008	0.66	0.44	0.62	0.28	0.62	0.21	0.26	0.31	0.27	0.13	0.24	0.20	0.20

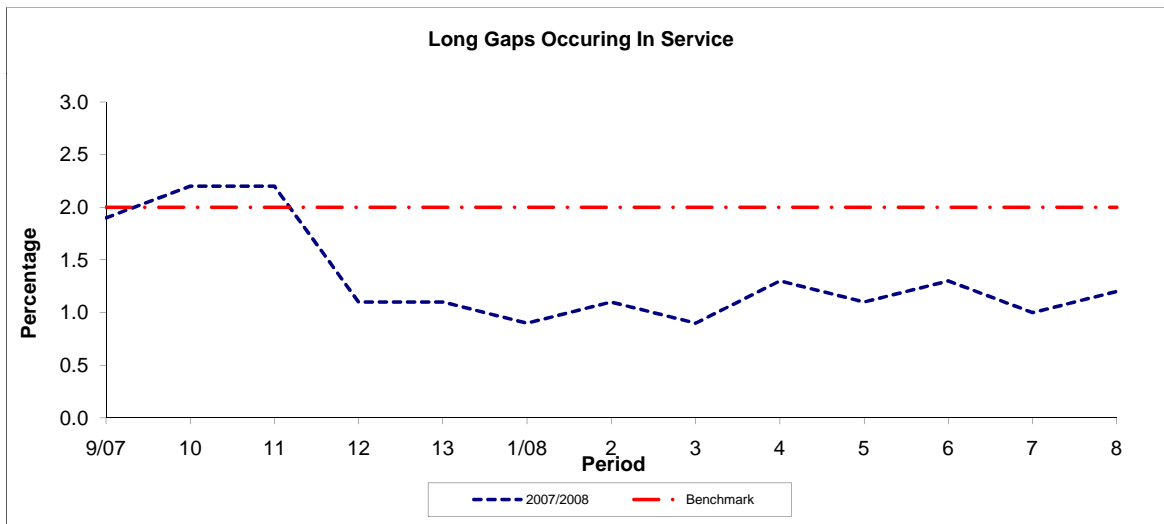
Note : Mileage is based on 4 weeks data

PART B - PERFORMANCE STATISTICS

Route 235



Period	9/07	10	11	12	13	1/08	2	3	4	5	6	7	8
2007/2008	1.10	1.17	1.08	0.79	0.82	0.79	0.89	0.81	0.92	0.88	0.92	0.90	0.99
Min Standard	1.30	1.30	1.30	1.30	1.30	1.30	1.30	1.30	1.30	1.30	1.30	1.30	1.30



Period	9/07	10	11	12	13	1/08	2	3	4	5	6	7	8
2007/2008	1.90	2.20	2.20	1.10	1.10	0.90	1.10	0.90	1.30	1.10	1.30	1.00	1.20
Benchmark	2.00	2.00	2.00	2.00	2.00	2.00	2.00	2.00	2.00	2.00	2.00	2.00	2.00

Note : Reliability is based on 12 weeks rolling data