

## CONTRACT SPECIFICATION

Tenders are requested for the following contract to operate a bus service.

<b>Contract Reference</b>	QC38103
<b>Route Number</b>	206
<b>Terminus Points (Options 1 &amp; 2)</b>	Wembley Park, The Paddocks to Kilburn Park Station
<b>Contract Basis</b>	Incentivised
<b>Commencement Date</b>	28 April 2012
<b>Vehicle Type</b>	60 capacity, dual door, single deck vehicles (55 capacity, dual door, single deck vehicles are acceptable)
<b>Maximum Approved Dimensions</b>	10.2 metres long and 2.4 metres wide
<b>Advertising Rights</b>	Operator
<b>Sponsored Route</b>	No
<b>Minimum Performance Std (Option 1)</b>	Departing on Time - No less than 78.00%
<b>Extension Threshold (Option 1)</b>	Departing on Time Threshold - 82.00%
<b>Minimum Performance Std (Option 2)</b>	Average Excess Wait Time - No more than 1.20 minutes
<b>Extension Threshold (Option 2)</b>	Average Excess Wait Time Threshold - 1.05 minutes
<b>Minimum Operated Mileage (Option 1 &amp; 2)</b>	No less than 98.00%

Tender Return Date: No later than 12 o'clock on 9<sup>th</sup> May 2011

## **SERVICE SPECIFICATION**

### **CONTENTS**

- 1) NOTES
- 2) SCHEDULE REQUIREMENTS & PINCHPOINTS
- 3) QSI POINTS & MILEAGE
- 4) OPERATIONAL CONSIDERATIONS
- 5) CURRENT PERFORMANCE, ROUTE RECORD & IBUS MILEAGE

## 1) NOTES

### **Proposed Changes:**

At this time, the Corporation expects to implement a change to the existing service prior to the commencement of the new Route Agreement for Route No. 206:

- Route No. 206 is restructured to operate between Wembley Park, The Paddocks and Kilburn Park Station and will no longer serve St Raphael's Estate. Route No. 206 is extended from Drury Way, Neasden via Route No. PR2 routeing. The section between St Raphael's, Pitfield Way and Drury Way, Neasden is withdrawn. **Please see section 5 for a full list of streets traversed.**
- In conjunction with the above change to Route No. 206:  
Route No. 224 is restructured to operate between Wembley Stadium Station and St. Raphaels Estate, Pitfield Way. Route No. 224 is extended from Acton Lane via current Route No. 206 routeing to St. Raphael's Estate. The section between Acton Lane, Harlesden and Old Oak Lane, Willesden Junction is withdrawn. There is also a possible rerouting in the Park Royal area.  
Route No. PR2 is withdrawn.

The above changes will commence on 15<sup>th</sup> October 2011.

Tenderers should note that the following alterations (subject to consultation) are proposed as part of this Service Specification for introduction with the new Route Agreement:

### **Option 1 (For introduction prior to funding being available):**

- No changes are proposed.

### **Option 2 (Possible introduction in 2012 - 2013, when external funding is expected to be available):**

- Mondays to Saturdays daytime frequencies are increased from every 15 minutes to every 12 minutes.
- Evening frequencies are increased from every 30 minutes to every 20 minutes.

### **Options 1 & 2:**

- 60 capacity, dual door, single deck vehicles are specified (55 capacity, dual door, single deck vehicles are acceptable), subject to a satisfactory route test.

## 2) SCHEDULE REQUIREMENTS & PINCHPOINTS

### 2.1) MONDAY TO FRIDAY SCHEDULE REQUIREMENTS & PINCHPOINTS

#### Option 1

Wembley Park, The Paddocks to Kilburn Park Station			Kilburn Park Station to Wembley Park, The Paddocks		
First departure no later than 0520.			First departure no later than 0525.		
0515 - 0600	Every 20 minutes		0520 - 0605	Every 20 minutes	
0601 - 1920	Every 15 minutes		0606 - 1945	Every 15 minutes	
1921 - 2005	Every 20 minutes		1946 - 2025	Every 20 minutes	
2006 - 0010	Every 30 minutes		2026 - 0030	Every 30 minutes	
Last departure no earlier than 0005.			Last departure no earlier than 0025.		
<b>Pinchpoints</b>					
Willesden, Chambers Lane	0700 - 0900	15 minutes	Neasden, Brent Park Tesco	0705 - 0905	15 minutes
	1445 - 1630	15 minutes		1450 - 1635	15 minutes

#### Option 2

Wembley Park, The Paddocks to Kilburn Park Station			Kilburn Park Station to Wembley Park, The Paddocks		
First departure no later than 0520.			First departure no later than 0525.		
0515 - 0600	Every 20 minutes		0520 - 0605	Every 20 minutes	
0601 - 0645	Every 15 minutes		0606 - 0635	Every 15 minutes	
0646 - 1920	Every 12 minutes		0636 - 1935	Every 12 minutes	
1921 - 2005	Every 15 minutes		1936 - 2025	Every 15 minutes	
2006 - 0010	Every 20 minutes		2026 - 0030	Every 20 minutes	
Last departure no earlier than 0005.			Last departure no earlier than 0025.		
<b>Pinchpoints</b>					
Willesden, Chambers Lane	0715 - 0915	12 minutes	Neasden, Brent Park Tesco	0705 - 0905	12 minutes
	1440 - 1640	12 minutes		1440 - 1640	12 minutes

2) **SCHEDULE REQUIREMENTS & PINCHPOINTS - continued**

2.2) **SATURDAY AND GOOD FRIDAY SCHEDULE REQUIREMENTS & PINCHPOINTS**

**Option 1**

Wembley Park, The Paddocks to Kilburn Park Station			Kilburn Park Station to Wembley Park, The Paddocks		
First departure no later than 0520.			First departure no later than 0525.		
0515 - 0820	Every 20 minutes		0520 - 0845	Every 20 minutes	
0821 - 1805	Every 15 minutes		0846 - 1830	Every 15 minutes	
1806 - 1905	Every 20 minutes		1831 - 1930	Every 20 minutes	
1906 - 0010	Every 30 minutes		1931 - 0030	Every 30 minutes	
Last departure no earlier than 0005.			Last departure no earlier than 0025.		
<b>Pinchpoints</b>					
Willesden, Chambers Lane	0850 - 1105	15 minutes	Neasden, Brent Park Tesco	0920 - 1105	15 minutes

**Option 2**

Wembley Park, The Paddocks to Kilburn Park Station			Kilburn Park Station to Wembley Park, The Paddocks		
First departure no later than 0520.			First departure no later than 0525.		
0515 - 0800	Every 20 minutes		0520 - 0845	Every 20 minutes	
0801 - 0900	Every 15 minutes		0846 - 0930	Every 15 minutes	
0901 - 1805	Every 12 minutes		0931 - 1830	Every 12 minutes	
1806 - 1905	Every 15 minutes		1831 - 1930	Every 15 minutes	
1906 - 0010	Every 20 minutes		1931 - 0030	Every 20 minutes	
Last departure no earlier than 0005.			Last departure no earlier than 0025.		
<b>Pinchpoints</b>					
Willesden, Chambers Lane	0855 - 0925	15 minutes	Neasden, Brent Park Tesco	0940 - 1010	15 minutes
	0926 - 1110	12 minutes		1011 - 1110	12 minutes

2) **SCHEDULE REQUIREMENTS & PINCHPOINTS - continued**

2.3) **SUNDAY AND PUBLIC HOLIDAY SCHEDULE REQUIREMENTS & PINCHPOINTS**

**Option 1**

Wembley Park, The Paddocks to Kilburn Park Station			Kilburn Park Station to Wembley Park, The Paddocks		
First departure no later than 0635.			First departure no later than 0655.		
0630 - 0835	Every 30 minutes		0650 - 0925	Every 30 minutes	
0836 - 1830	Every 20 minutes		0926 - 1825	Every 20 minutes	
1831 - 0010	Every 30 minutes		1826 - 0030	Every 30 minutes	
Last departure no earlier than 0005.			Last departure no earlier than 0025.		
<b>Pinchpoints</b>					
Willesden, Chambers Lane	1020 - 1140	20 minutes	Neasden, Brent Park Tesco	1020 - 1140	20 minutes

**Option 2**

Wembley Park, The Paddocks to Kilburn Park Station			Kilburn Park Station to Wembley Park, The Paddocks		
First departure no later than 0635.			First departure no later than 0655.		
0630 - 0835	Every 30 minutes		0650 - 0925	Every 30 minutes	
0836 - 0010	Every 20 minutes		0926 - 0030	Every 20 minutes	
Last departure no earlier than 0005.			Last departure no earlier than 0025.		
<b>Pinchpoints</b>					
Willesden, Chambers Lane	1020 - 1140	20 minutes	Neasden, Brent Park Tesco	1020 - 1140	20 minutes

**2) SCHEDULE REQUIREMENTS & PINCHPOINTS - continued**

**2.4) BOXING DAY SCHEDULE REQUIREMENTS & PINCHPOINTS**

**Option 1**

Wembley Park, The Paddocks to Kilburn Park Station		Kilburn Park Station to Wembley Park, The Paddocks			
First departure no later than 0805.		First departure no later than 0825.			
0800 - 0835	Every 30 minutes	0820 - 0925	Every 30 minutes		
0836 - 1830	Every 20 minutes	0926 - 1825	Every 20 minutes		
1836 - 0010	Every 30 minutes	1826 - 0030	Every 30 minutes		
Last departure no earlier than 0005.		Last departure no earlier than 0025.			
<b>Pinchpoints</b>					
Willesden, Chambers Lane	1020 - 1140	20 minutes	Neasden, Brent Park Tesco	1020 - 1140	20 minutes

**Option 2**

Wembley Park, The Paddocks to Kilburn Park Station		Kilburn Park Station to Wembley Park, The Paddocks			
First departure no later than 0805.		First departure no later than 0825.			
0800 - 0835	Every 30 minutes	0820 - 0925	Every 30 minutes		
0836 - 0010	Every 20 minutes	0926 - 0030	Every 20 minutes		
Last departure no earlier than 0005.		Last departure no earlier than 0025.			
<b>Pinchpoints</b>					
Willesden, Chambers Lane	1020 - 1140	20 minutes	Neasden, Brent Park Tesco	1020 - 1140	20 minutes

**3) QSI POINTS & MILEAGE**

It is intended Route No. 206 will have 64 surveys per quarter at the following locations:

<b>QSI POINTS</b>	
<b><i>Towards Kilburn Park Station</i></b>	<b><i>Towards Wembley Park, The Paddocks</i></b>
<b>Brent Park Tescos</b>	<b>Kilburn High Road</b>
<b>Harlesden</b>	<b>Harlesden</b>
<b>MILEAGE: See Attached iBus Sheets</b>	

#### **4) OPERATIONAL CONSIDERATIONS**

- 4.1) Under Option 1, Route No. 206 should interwork with Route No. 224 between Neasden, Brent Park Tesco and Harlesden Station, Mordaunt Road towards Kilburn Park Station and between Harlesden Station, Mordaunt Road and Brentfield Road, Swaminarayan Temple towards Wembley Park, The Paddocks during Mondays to Saturdays daytimes, all evenings daily and Sunday early morning and be separated during the Sunday shopping period.
- 4.2) Under Option 2, Route No. 206 should be separated from Route No. 224 between Neasden, Brent Park Tesco and Harlesden Station, Mordaunt Road towards Kilburn Park Station and between Harlesden Station, Mordaunt Road and Brentfield Road, Swaminarayan Temple towards Wembley Park, The Paddocks during all periods, where possible.
- 4.3) When compiling schedules Tenderers are asked to consider passengers making connections to other services at the following locations: Wembley Park, Harlesden and Kilburn Park Stations.
- 4.4) Route No. 206 can suffer unpredictable traffic delays in the Wembley and Kilburn areas.
- 4.5) Route No. 206 can suffer unpredictable and severe delays caused by sports and other events at the Wembley complex.
- 4.6) A proposal exists to close Engineers Way and possibly Rutherford Way. Route No. 206 would be diverted from First Way to Fulton Road in both directions from 16<sup>th</sup> July 2012 until 14<sup>th</sup> August 2012.
- 4.7) A substantial mixed use development in the vicinity of Wembley Stadium is expected during the lifetime of this contract. This lies between South Way, Empire Way, North End Road and First Way and includes 4,000 housing units. In 2013, Brent Civic Centre is due to relocate to new offices on Engineers Way which is west of Olympic Way. A new road will link Engineers Way with Royal Way and it is intended that North End Road would no longer be a dead end in order to allow access and egress to Bridge Road. A Masterplan exists for the area east of First Way, north of Great Central Way and south of the Bakerloo line.
- 4.8) The 2012 Olympic Games open on Friday 27<sup>th</sup> July and close on Sunday 12<sup>th</sup> August. The 2012 Paralympic Games start on Wednesday 29<sup>th</sup> August and close on Sunday 9<sup>th</sup> September. The Games will result in additional passenger demand across the network, requiring additional capacity on some routes. There will also be a number of road closures in the event areas resulting in route diversions. Operators should be aware there will be implications to them during this time. Full details and any extra resource required will be negotiated with the operator at a later date.



**5) CURRENT PERFORMANCE, ROUTE RECORD & IBUS MILEAGE**

5.1) CURRENT PERFORMANCE

As per current print out.

5.2) ROUTE RECORD

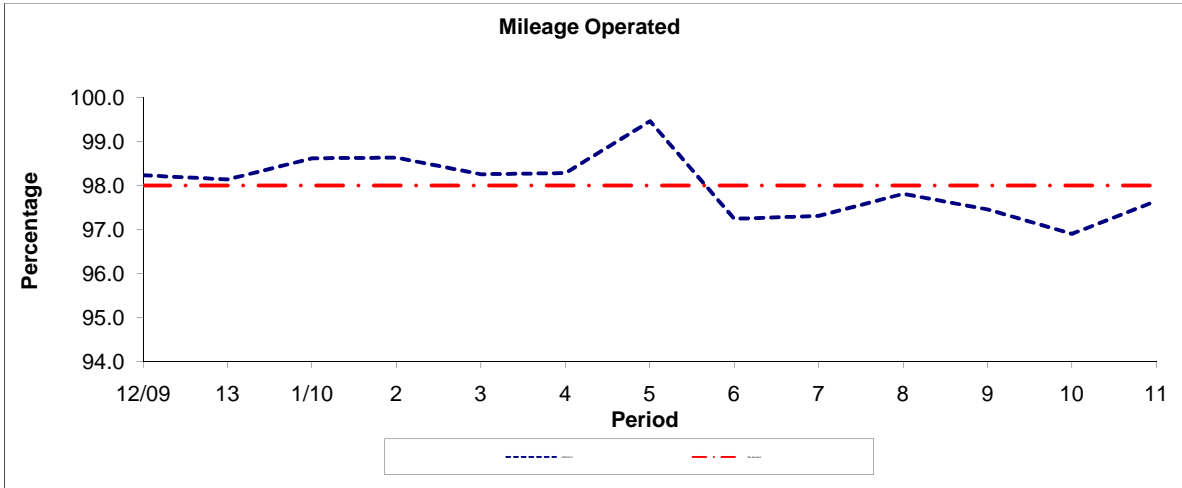
As per Busnet Printout.

5.3) IBUS MILEAGE

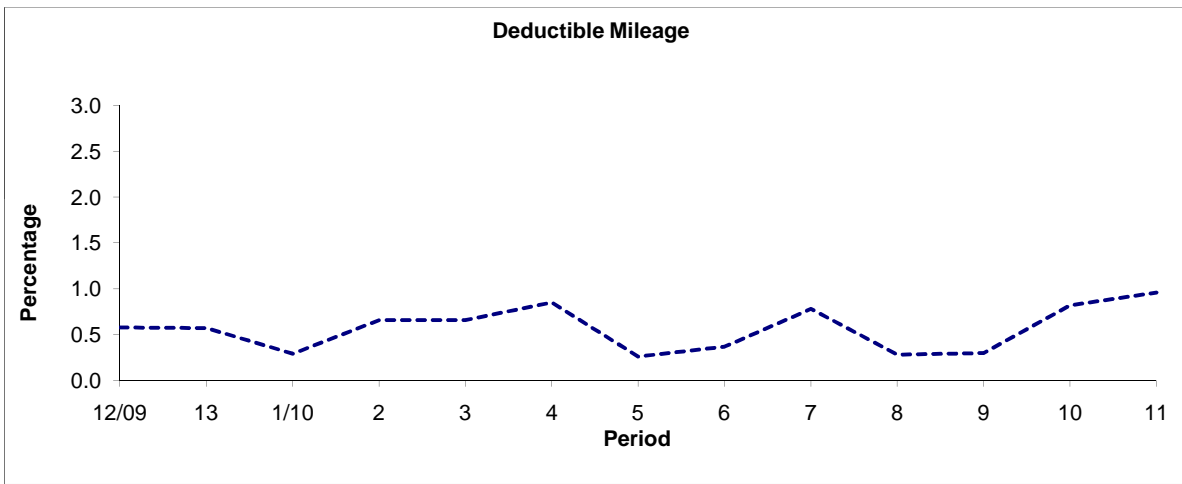
As per current print out.

**PART B - PERFORMANCE STATISTICS**

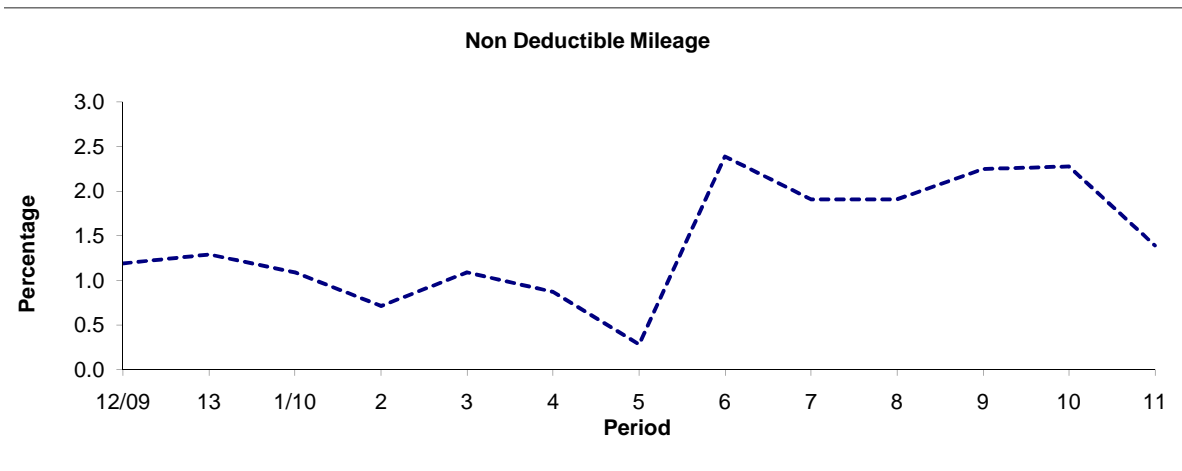
**Route 206**



Period	12/09	13	1/10	2	3	4	5	6	7	8	9	10	11
2009/2010	98.23	98.14	98.62	98.63	98.25	98.28	99.46	97.24	97.31	97.81	97.45	96.90	97.65
Min Standard	98.00	98.00	98.00	98.00	98.00	98.00	98.00	98.00	98.00	98.00	98.00	98.00	98.00



Period	12/09	13	1/10	2	3	4	5	6	7	8	9	10	11
2009/2010	0.58	0.57	0.29	0.66	0.66	0.85	0.26	0.37	0.78	0.28	0.30	0.82	0.96

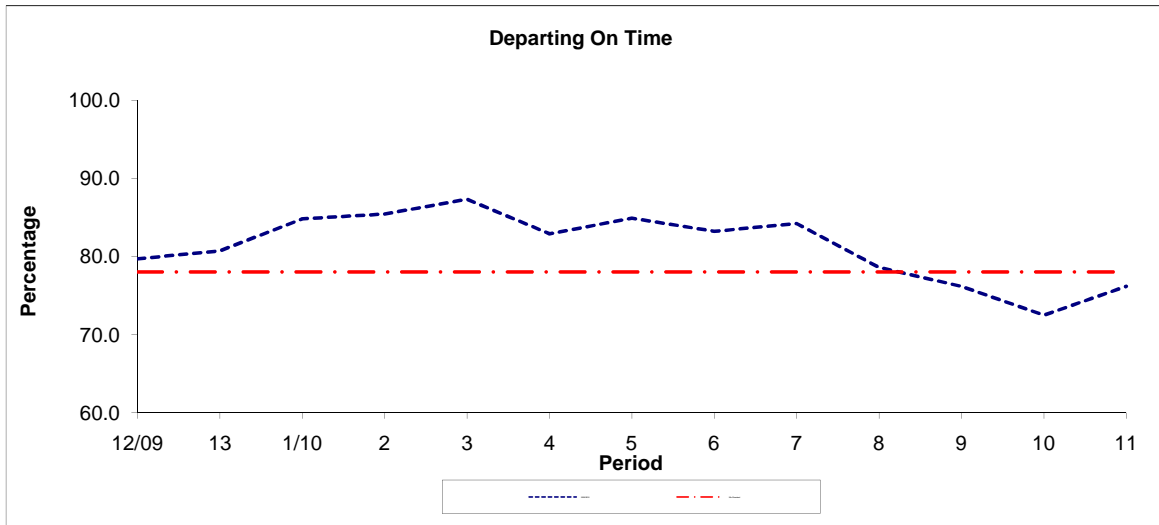


Period	12/09	13	1/10	2	3	4	5	6	7	8	9	10	11
2009/2010	1.19	1.29	1.09	0.71	1.09	0.87	0.28	2.39	1.91	1.91	2.25	2.28	1.39

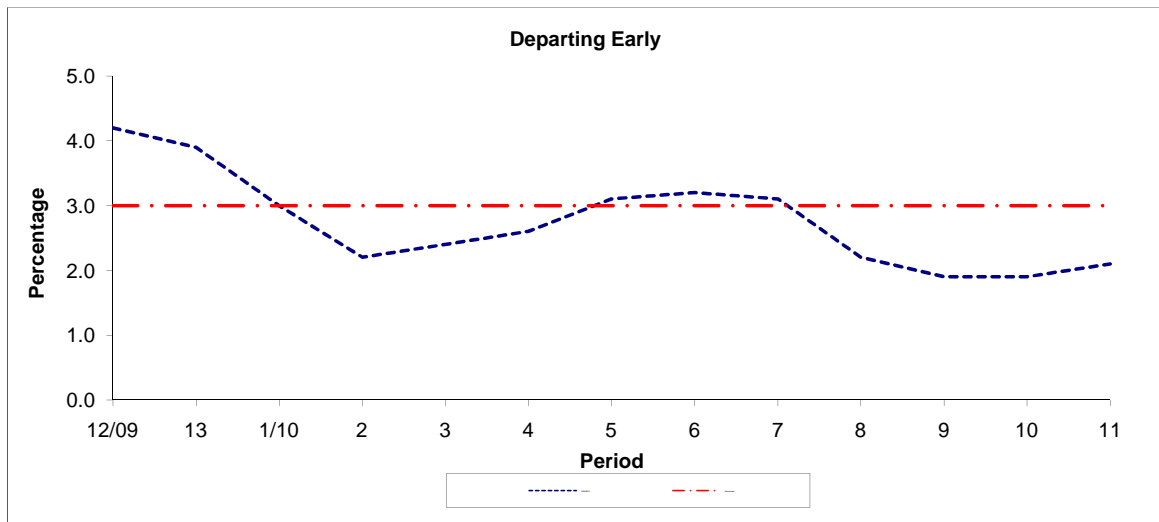
**Note :** Mileage is based on 4 weeks data

**PART B - PERFORMANCE STATISTICS**

**Route 206**



Period	12/09	13	1/10	2	3	4	5	6	7	8	9	10	11
2009/2010	79.70	80.70	84.80	85.40	87.30	82.90	84.90	83.20	84.20	78.60	76.20	72.50	76.20
Min Standard	78.00	78.00	78.00	78.00	78.00	78.00	78.00	78.00	78.00	78.00	78.00	78.00	78.00



Period	12/09	13	1/10	2	3	4	5	6	7	8	9	10	11
2009/2010	4.20	3.90	3.00	2.20	2.40	2.60	3.10	3.20	3.10	2.20	1.90	1.90	2.10
Benchmark	3.00	3.00	3.00	3.00	3.00	3.00	3.00	3.00	3.00	3.00	3.00	3.00	3.00

**Note :** Reliability is based on 12 weeks rolling data

# LONDON BUSES - ROUTE DESCRIPTION

## ROUTE 206: Wembley, The Paddocks - Kilburn Park Station

**Date of Structural Change:** 28 April 2012.

**Date of Service Change:** 28 April 2012.

**Reason for Issue:** New tender.

### STREETS TRAVERSED

**Towards Kilburn Park Station:** Salmon Street, The Paddocks, Forty Lane, Bridge Road, Wembley Park Drive, Empire Way, Fulton Road, Rutherford Way, Engineers Way, Fifth Way, Fourth Way, Great Central Way, Brent Park Tesco Access Road, Drury Way, Great Central Way, North Circular Road, Brentfield Road, Knatchbull Road, Winchelsea Road, Mordaunt Road, Acton Lane, Station Road, Harlesden High Street, Tavistock Road, Manor Park Road, Park Parade, Harlesden Road, Robson Avenue, Harlesden Road, Donnington Road, Peter Avenue, Harlesden Road, Chambers Lane, Sidmouth Road, Brondesbury Park, Salusbury Road, Brondesbury Road, Kilburn High Road, Cambridge Avenue.

**Towards Wembley, The Paddocks:** Cambridge Avenue, Kilburn High Road, Brondesbury Road, Salusbury Road, Brondesbury Park, Sidmouth Road, Chambers Lane, Harlesden Road, Peter Avenue, Donnington Road, Harlesden Road, Robson Avenue, Harlesden Road, Park Parade, Harlesden High Street, Station Road, Acton Lane, Mordaunt Road, Winchelsea Road, Knatchbull Road, Brentfield Road, Drury Way, Great Central Way, Brent Park Tesco Access Road, Drury Way, Great Central Way, South Way, First Way, Engineers Way, Rutherford Way, Fulton Road, Empire Way, Wembley Park Drive, Bridge Road, Forty Lane, The Paddocks, Salmon Street.

### STANDING AND TURNING POINTS

#### WEMBLEY PARK, THE PADDOCKS

Public stand for one bus on west side of Salmon Street roundabout, commencing 9 metres south of Pilgrims Way.

Buses proceed from Salmon Street direct to stand, departing to Salmon Street. Set down in Salmon Street, at Stop BT and pick up in Salmon Street, at Stop BT.

**AVAILABILITY:** At any time.

**OPERATING RESTRICTIONS:** No more than 1 bus on Route 206 should be scheduled to stand at any one time.

**MEAL RELIEFS:** No meal relief vehicles to stand at any time.

**FERRY VEHICLES:** No ferry vehicles to park on stand at any time.

**DISPLAY:** Wembley Park, The Paddocks.

## **NEASDEN, TESCO**

Private stand for four buses parked in two rows side by side in car park on southwest side of Tesco Superstore Perimeter Road, north of pedestrian access to store.

### From Kilburn Park Station.

Buses proceed from Brent Park Tesco Access Road direct to stand, departing to Brent Park Tesco Access Road. Set down in Brent Park Tesco Access Road, at Stop T and pick up in Brent Park Tesco Access Road, at Stop T.

### From Wembley, The Paddocks.

Buses proceed from Brent Park Tesco Access Road direct to stand, departing to Brent Park Tesco Access Road. Set down in Brent Park Tesco Access Road, at Stop T and pick up in Brent Park Tesco Access Road, at Stop T.

AVAILABILITY:	At any time.
OPERATING RESTRICTIONS:	Unscheduled curtailments only.
MEAL RELIEFS:	No meal relief vehicles to stand at any time.
FERRY VEHICLES:	No ferry vehicles to park on stand at any time.
DISPLAY:	Brent Park, Superstores.
OTHER INFORMATION:	Toilets and Cafe are available in Tesco store.

## **CRAVEN PARK, CRAVEN ROAD**

Public stand on east side of Craven Road, commencing at a point 66 metres south of centreline of Craven Park (southern arm) and extending 12 metres back.

### From Kilburn Park Station.

Buses proceed from Knatchbull Road via Craven Park (Southern Arm) and Craven Road to stand, departing via Craven Road and Knatchbull Road to Winchelsea Road. Set down in Knatchbull Road, at Stop Y and pick up in Winchelsea Road, at Stop HD.

### From Wembley, The Paddocks.

Buses proceed from Brentfield Road via Craven Park (Southern Arm) and Craven Road to stand, departing via Craven Road to Knatchbull Road. Set down in Brentfield Road, at Stop T and pick up in Knatchbull Road, at Stop Y.

AVAILABILITY:	At any time.
OPERATING RESTRICTIONS:	Unscheduled curtailments only
MEAL RELIEFS:	By arrangement.
FERRY VEHICLES:	By arrangement.
DISPLAY:	Craven Park.

### **HARLESDEN, JUBILEE CLOCK (from KILBURN PARK STATION)**

Buses proceed from Park Parade departing to Harlesden High Street. Set down in Park Parade, at Stop D and pick up in Harlesden High Street, at Stop X.

AVAILABILITY: At any time.  
OPERATING RESTRICTIONS: **Turning Point Only - Buses must not stand**  
DISPLAY: Harlesden, Jubilee Clock.

### **QUEENS PARK STATION, CLAREMONT ROAD (from Wembley, The Paddocks)**

Public stand for three buses on east side of Claremont Road (eastern arm), commencing 18 metres north of the kerb line of Kilburn Lane and extending 37 metres north. Buses proceed from Salusbury Road via Premier Corner, Carlton Vale, Kilburn Lane and Claremont Road to stand, departing via Claremont Road, Kilburn Lane and Premier Corner to Salusbury Road. Set down in Salusbury Road, at Stop K and pick up in Salusbury Road, at Stop L.

AVAILABILITY: At any time.  
OPERATING RESTRICTIONS: **Unscheduled curtailments only.**  
MEAL RELIEFS: No meal relief vehicles to stand at any time.  
FERRY VEHICLES: No ferry vehicles to park on stand at any time.  
DISPLAY: Queen's Park.

### **KILBURN PARK STATION, CAMBRIDGE GARDENS**

Public stand for five buses in 2 portions:

1- For three buses in east arm of Cambridge Gardens, alongside garden enclosure, commencing at party wall of Nos. 15/16 and extending 35 metres south.

2- For two buses in south arm of Cambridge Gardens, alongside garden enclosure, commencing 17 metres west of centre of Cambridge Gardens (east arm) and extending 21 metres west.

Buses proceed from Cambridge Avenue via Cambridge Gardens (East Arm) to stand, departing via Cambridge Gardens (East Arm), Cambridge Gardens (South Arm) and Cambridge Gardens (West Arm) to Cambridge Avenue. Set down in Cambridge Avenue, at Stop KB and pick up in Cambridge Avenue, at Stop KA.

AVAILABILITY: At any time.  
OPERATING RESTRICTIONS: No more than 2 buses on Route 206 should be scheduled to stand at any one time.  
MEAL RELIEFS: No meal relief vehicles to stand at any time.  
FERRY VEHICLES: No ferry vehicles to park on stand at any time.  
DISPLAY: Kilburn Park.  
OTHER INFORMATION: Not to be used by buses longer than 10 metre, alternative stand Kilburn Park Station [2]. LUL toilet facilities available 0600-0100 Mondays to Saturdays; 0700-0100 Sundays.

## Transport for London - Live Mileage List

Route 206  
 Service change 21765  
 Date 19 November 2009

OUT DIRECTION				
Timing Point Code	Stop Number	Stop Name	Metres	Miles
SRPEPW S	SRPEPW S	ST. RAPHAELS ESTATE, PITFIELD WAY		
SRPEPW	37024	Mitchell Way	0	0.00
	37021	Lilburne Walk	241	0.15
	37025	Owen Way	220	0.14
	37020	Drury Way	302	0.19
	37279	Ikea Brent Park	155	0.10
NEASTS	37253	Brent Park Tesco	1183	0.74
	BP1884	Lynton Close	1190	0.74
	14852	Woodheyes Road	301	0.19
	37018	Kingfisher Way	371	0.23
BFRDST	37016	Swaminaryan Temple	373	0.23
	37014	Gloucester Close	228	0.14
	37012	Fawood Avenue	214	0.13
	CW35	Knatchbull Road	334	0.21
HRSNMR	CW36	Winchelsea Road / Harlesden Station	314	0.20
	6130	Fairlight Avenue	423	0.26
HARLMC	1386	Willesden County Court	382	0.24
	18222	Harlesden Jubilee Clock	174	0.11
	1380	Park Parade	489	0.30
	26954	Wrottesley Road	351	0.22
	26952	Roundwood Park	356	0.22
WILLHP	BP982	Robson Avenue	193	0.12
	BP4510	The Oaks	383	0.24
	M10	Peter Avenue	264	0.16
WILLCL	M11	Chambers Lane	597	0.37
	11623	Hanover Road	477	0.30
	M12	Brondesbury Park	421	0.26
	C9	Milverton Road	191	0.12
	C35	Manor House Drive	417	0.26
BYPKSN	C8	The Avenue	288	0.18
	C5	Brooksville Avenue	436	0.27
QNPKN	C4	Victoria Road	453	0.28
	BP1138	Brondesbury Road	466	0.29
KBHRN	BP1137	Kilburn High Road Station	517	0.32
	1622	Kilburn High Rd Stn / Cambridge Avenue	178	0.11
KBPKSN	10241	Kilburn Park Station	225	0.14
KBPKSNSS	KBPKSNSS	KILBURN PARK STATION, CAMBRIDGE GARDENS, SOUTH ARM STAND	0	0.00
<b>TOTAL ROUTE MILEAGE - OUT DIRECTION</b>			<b>13107</b>	<b>8.1</b>
			metres	miles

BACK DIRECTION				
Timing Point Code	Stop Number	Stop Name	Metres	Miles
KBPKSNSS	KBPKSNSS	KILBURN PARK STATION, CAMBRIDGE GARDENS, SOUTH ARM STAND		
KBPKSN	10240	Kilburn Park Station	0	0.00
	1621	Kilburn High Road Station	97	0.06
KBHRSN	4920	Brondesbury Road	268	0.17
	R0316	Brondesbury Road	488	0.30
QNPKN	C3	Victoria Road	461	0.29
	C6	Brooksville Avenue	420	0.26
BYPKSN	C7	The Avenue	422	0.26
	C40	Manor House Drive	228	0.14
	C10	Milverton Road	469	0.29
	M13	Brondesbury Park	332	0.21
	11630	Hanover Road	293	0.18
WILLCL	M14	Chambers Lane	512	0.32
	M15	Peter Avenue	610	0.38
	BP4512	The Oaks	322	0.20
WILLHP	26951	Harlesden Road	134	0.08
	BP446	Robson Avenue	162	0.10
	26953	Roundwood Park	217	0.13
	26955	Wrottesley Road	357	0.22
	1381	Park Parade	262	0.16
HARLMC	1387	Willesden County Court	440	0.27
	6129	Fairlight Avenue	337	0.21
HRSNMR	CW37	Winchelsea Road / Harlesden Station	392	0.24
	37011	Knatchbull Road	434	0.27
	37013	Fawood Avenue	246	0.15
	37015	Gloucester Close	212	0.13
BFRDST	37017	Swaminaryan Temple	289	0.18
	37019	Kingfisher Way	392	0.24
	C12	Ikea Brent Park	355	0.22
NEASTS	37253	Brent Park Tesco	1078	0.67
	37280	Ikea Brent Park	554	0.34
	37022	Drury Way	196	0.12
	37026	Owen Way	284	0.18
	37023	Lilburne Walk	256	0.16
SRPEPW	37024	Mitchell Way	472	0.29
SRPEPW S	SRPEPW S	ST. RAPHAELS ESTATE, PITFIELD WAY	0	0.00
<b>TOTAL ROUTE MILEAGE - BACK DIRECTION</b>			11991	7.5
			metres	miles