

## 7. Service Specification

Route: 200

QC43701

This Service Specification forms section 7 of the ITT and should be read in conjunction with the ITT document, Version 1 dated 29 September 2011.

You are formally invited to tender for the provision of the bus service detailed below and in accordance with this Service Specification. Tenderers must ensure that a Compliant Tender is submitted and this will only be considered for evaluation if all parts of the Tender documents, as set out in section 11, have been received by the Corporation by the Date of Tender. The Tender must be fully completed in the required format, in accordance with the Instructions to Tenderers. A Compliant Tender must comply fully with the requirements of the Framework Agreement; adhere to the requirements of the Service Specification; and reflect the price of operating the Services with new vehicles.

<b>Terminus Points</b>	Raynes Park Station, Raynes Park Hotel to Mitcham, Fair Green
<b>Contract Basis</b>	Incentivised
<b>Commencement Date</b>	22 <sup>nd</sup> February 2014
<b>Vehicle Type</b>	60 capacity, dual door, single deck, minimum 10.8m long, subject to a satisfactory route test <b>Plus</b> Two 87 capacity, dual door, double deck
<b>Current Maximum Approved Dimensions</b>	10.2 metres long and 2.4 metres wide - single deck 10.1 metres long and 2.55 metres wide - double deck
<b>New Vehicles Mandatory</b>	Yes
<b>Hybrid Price Required</b>	Yes
<b>Sponsored Route</b>	No
<b>Advertising Rights</b>	Operator
<b>Minimum Performance Standard</b>	Average Excess Wait Time - No more than 0.90 minutes
<b>Extension Threshold</b>	Average Excess Wait Time Threshold - 0.80 minutes
<b>Minimum Operated Mileage Standard</b>	No less than 98.00%

The Date of Tender for this ITT is:

No later than 12 Noon on Monday 4<sup>th</sup> March 2013

*Tenderers should refer to section 3 of Part A for the Service Specification Explanatory Notes and Appendix B of section 5 for the Example Service Specification of the ITT document.*

## **SERVICE SPECIFICATION**

- 1) SERVICE SPEC - ROUTE SPECIFICATION INFORMATION
- 2) NOTES
- 3) SCHEDULE REQUIREMENTS & PINCHPOINTS
- 4) OPERATIONAL CONSIDERATIONS
- 5) ROUTE RECORD, CURRENT PERFORMANCE, QSI BY TIME OF DAY, IBUS MILEAGE & QSI POINTS

## 2) NOTES

### **Proposed Changes:**

At this time, no changes are proposed to the existing service for introduction prior to the commencement of the new Route Agreement for Route No. 200.

Tenderers should note that the following alterations (subject to consultation) are proposed as part of this Service Specification for introduction with the new Route Agreement:

- 60 capacity, dual door, single deck buses of a minimum of 10.8 metres long will be specified, subject to a satisfactory route test.
- Two 87 capacity, dual door, double deck buses are required on schooldays as indicated in the schedule requirements.
- To address timekeeping issues it is expected that on schooldays the full PVR will be in service by 0715.
- The Boxing Day service should match the Sunday service.
- **Tenderers must identify the cost of the Boxing Day element of this service separately.**

### 3) SCHEDULE REQUIREMENTS & PINCHPOINTS

#### 3.1) MONDAY TO FRIDAY SCHOOLDAYS SCHEDULE REQUIREMENTS

Raynes Park Station, Raynes Park Hotel to Mitcham, Fair Green			Mitcham, Fair Green to Raynes Park Station, Raynes Park Hotel		
First departure no later than 0510.			First departure no later than 0450.		
0505 - 0610	Every 20 minutes		0445 - 0610	Every 20 minutes	
0611 - 0625	Every 15 minutes		0611 - 0625	Every 15 minutes	
0626 - 0655	Every 10 minutes		0626 - 0655	Every 10 minutes	
0656 - 1505	Every 8 minutes		0656 - 0720	Every 8 minutes	
1506 - 1525*	Every 6 minutes		0721 - 0740#	Every 6 minutes	
1526 - 1900	Every 8 minutes		0741 - 1900	Every 8 minutes	
1901 - 2000	Every 10 minutes		1901 - 2000	Every 10 minutes	
2001 - 0005	Every 15 minutes		2001 - 0005	Every 15 minutes	
Last departure no earlier than 2400.			Last departure no earlier than 2400.		
<b>Pinchpoints</b>					
Merton Abbey, Sainsbury's	0730 - 0900	8 minutes	Wimbledon Station	0730 - 0750	8 minutes
	1500 - 1530	8 minutes		0751 - 0810	6 minutes
	1531 - 1550	6 minutes		0811 - 0900	8 minutes
	1551 - 1630	8 minutes		1500 - 1630	8 minutes

\* Journeys departing Wimbledon Station at approximately 1528 and 1534 should operate with an 87 capacity, dual door, double deck bus.

# Journeys departing Wimbledon Station at approximately 0750 and 0802 should operate with an 87 capacity, dual door, double deck bus.

#### 3.2) MONDAY TO FRIDAY NON SCHOOLDAYS SCHEDULE REQUIREMENTS & PINCHPOINTS

Raynes Park Station, Raynes Park Hotel to Mitcham, Fair Green			Mitcham, Fair Green to Raynes Park Station, Raynes Park Hotel		
First departure no later than 0510.			First departure no later than 0450.		
0505 - 0610	Every 20 minutes		0445 - 0610	Every 20 minutes	
0611 - 0625	Every 15 minutes		0611 - 0625	Every 15 minutes	
0626 - 0655	Every 10 minutes		0626 - 0655	Every 10 minutes	
0656 - 1900	Every 8 minutes		0656 - 1900	Every 8 minutes	
1901 - 2000	Every 10 minutes		1901 - 2000	Every 10 minutes	
2001 - 0005	Every 15 minutes		2001 - 0005	Every 15 minutes	
Last departure no earlier than 2400.			Last departure no earlier than 2400.		
<b>Pinchpoints</b>					
Merton Abbey, Sainsbury's	0730 - 0900	8 minutes	Wimbledon Station	0730 - 0900	8 minutes
	1500 - 1630	8 minutes		1500 - 1630	8 minutes

**3) SCHEDULE REQUIREMENTS & PINCHPOINTS - continued**

**3.3) SATURDAY AND GOOD FRIDAY SCHEDULE REQUIREMENTS & PINCHPOINTS**

Raynes Park Station, Raynes Park Hotel to Mitcham, Fair Green			Mitcham, Fair Green to Raynes Park Station, Raynes Park Hotel		
First departure no later than 0510.			First departure no later than 0450.		
0505 - 0630	Every 20 minutes		0445 - 0630	Every 20 minutes	
0631 - 0800	Every 15 minutes		0631 - 0800	Every 15 minutes	
0801 - 0900	Every 10 minutes		0801 - 0900	Every 10 minutes	
0901 - 1800	Every 8 minutes		0901 - 1800	Every 8 minutes	
1801 - 1900	Every 10 minutes		1801 - 1900	Every 10 minutes	
1901 - 0005	Every 15 minutes		1901 - 0005	Every 15 minutes	
Last departure no earlier than 2400.			Last departure no earlier than 2400.		
<b>Pinchpoints</b>					
Merton Abbey, Sainsbury's	0930 - 1100	8 minutes	Wimbledon Station	0930 - 1100	8 minutes

**3.4) SUNDAY AND PUBLIC HOLIDAY SCHEDULE REQUIREMENTS & PINCHPOINTS**

Raynes Park Station, Raynes Park Hotel to Mitcham, Fair Green			Mitcham, Fair Green to Raynes Park Station, Raynes Park Hotel		
First departure no later than 0610.			First departure no later than 0550.		
0605 - 0730	Every 20 minutes		0545 - 0750	Every 20 minutes	
0731 - 0915	Every 15 minutes		0751 - 0920	Every 15 minutes	
0916 - 1800	Every 12 minutes		0921 - 1800	Every 12 minutes	
1801 - 0005	Every 15 minutes		1801 - 0005	Every 15 minutes	
Last departure no earlier than 2400.			Last departure no earlier than 2400.		
<b>Pinchpoints</b>					
Merton Abbey, Sainsbury's	0950 - 1050	12 minutes	Wimbledon Station	1000 - 1100	12 minutes

**Tenderers must identify the cost of the Boxing Day element of this service separately.**

**4) OPERATIONAL CONSIDERATIONS**

- 4.1) Route No. 200 can suffer unpredictable traffic delays in the Wimbledon and Mitcham areas.
- 4.2) The annual Wimbledon Tennis Championships at the All England Lawn Tennis Club (usually held over two weeks in late June/early July each year) can also cause traffic congestion and possible diversions to bus services within the Wimbledon area.

**5) ROUTE RECORD, CURRENT PERFORMANCE, QSI BY TIME OF DAY, IBUS MILEAGE & QSI POINTS**

- 5.1) ROUTE RECORD  
As per Busnet Printout.
- 5.2) CURRENT PERFORMANCE  
As per current print out.
- 5.3) QSI BY TIME OF DAY  
As per current print out.
- 5.4) IBUS MILEAGE & QSI POINTS  
As per current print out.

## LONDON BUSES - ROUTE DESCRIPTION

### ROUTE 200: Raynes Park, Raynes Park Hotel - Mitcham, Fair Green

**Date of Structural Change:** 22 February 2014.

**Date of Service Change:** 22 February 2014.

**Reason for Issue:** New contract, not yet awarded (currently operated by London General from Merton garage).

#### **STREETS TRAVERSED**

**Towards Mitcham, Fair Green:** Lambton Road, Worple Road, Pepys Road, Coombe Lane, Durham Road, Cottenham Park Road, Copse Hill, Entrance To Bus Turning Lay-By, Exit From Bus Turning Lay-By, Copse Hill, Ridgway, Wimbledon Hill Road, Wimbledon Bridge, The Broadway, Queen's Road, Haydon's Road, Merton High Street, Collier's Wood High Street, Christchurch Road, Church Road, Haslemere Avenue, Phipp's Bridge Road, Church Road, Lower Green West, London Road, Raleigh Gardens.

**Towards Raynes Park, Raynes Park Hotel:** Raleigh Gardens, Upper Green West, London Road, Lower Green West (South Arm), Church Road, Phipp's Bridge Road, Haslemere Avenue, Church Road, Christchurch Road, Collier's Wood High Street, Merton High Street, Haydon's Road, Queen's Road, The Broadway, Gladstone Road, Bus Turning Area, Sir Cyril Black Way, Hartfield Road, Wimbledon Bridge, Wimbledon Hill Road, Ridgway, Copse Hill, Entrance To Bus Turning Lay-By, Exit From Bus Turning Lay-By, Copse Hill, Cottenham Park Road, Durham Road, Coombe Lane, Lambton Road.

## **AUTHORISED STANDS, CURTAILMENT POINTS, & BLIND DESCRIPTIONS**

Please note that only stands, curtailment points, & blind descriptions as detailed in this contractual document may be used.

### **RAYNES PARK, RAYNES PARK HOTEL**

Public stand for two buses on west side of Lambton Road.

Buses proceed from Lambton Road direct to stand, departing to Lambton Road. Set down in Lambton Road, at Stop C (20480 - Lambton Road, Last Stop on LOR: 20480 - Lambton Road) and pick up in Lambton Road, at Stop C (20480 - Lambton Road, First Stop on LOR: 20480 - Lambton Road).

AVAILABILITY: At any time.  
OPERATING RESTRICTIONS: No more than 2 buses on Route 200 should be scheduled to stand at any one time.  
MEAL RELIEFS: No meal relief vehicles to stand at any time.  
FERRY VEHICLES: No ferry vehicles to park on stand at any time.  
BLIND DISPLAY: Raynes Park.

### **COPSE HILL (from MITCHAM, FAIR GREEN)**

Buses proceed from Entrance To Bus Turning Lay-By departing to Entrance To Bus Turning Lay-By. Set down in Entrance To Bus Turning Lay-by (BP5720 - Atkinson Close / Copse Hill, Last Stop on LOR: BP5720 - Atkinson Close / Copse Hill) and pick up in Entrance To Bus Turning Lay-by (BP5720 - Atkinson Close / Copse Hill, First Stop on LOR: BP5720 - Atkinson Close / Copse Hill).

AVAILABILITY: At any time.  
OPERATING RESTRICTIONS: **Turning Point Only - Buses must not stand**  
BLIND DISPLAY: Copse Hill.

### **WIMBLEDON, WORPLE ROAD (from MITCHAM, FAIR GREEN)**

Buses proceed from Hartfield Road via Wimbledon Bridge, St George's Road, Francis Grove, Worple Road, Wimbledon Hill Road, Wimbledon Bridge and The Broadway departing to Queen's Road. Set down in Hartfield Road, at stop L (LG65 - Wimbledon Station # <> >t<, Last Stop on LOR: LG65 - Wimbledon Station # <> >t<) and pick up in Queen's Road, at stop J (29880 - Wimbledon Police Station, First Stop on LOR: 29880 - Wimbledon Police Station).

AVAILABILITY: At any time.  
OPERATING RESTRICTIONS: **Turning Point Only - Buses must not stand**  
BLIND DISPLAY: Wimbledon.



### **WIMBLEDON, SIR CYRIL BLACK WAY (from Raynes Park, Raynes Park Hotel)**

Buses proceed from Wimbledon Bridge via The Broadway and Gladstone Road departing to Bus Turning Area. Set down in Bus Turning Area, at stop G (LG68 - Wimbledon Bus Station, Last Stop on LOR: 7604 - Wimbledon Hill Road) and pick up in Bus Turning Area, at stop G (LG68 - Wimbledon Bus Station, First Stop on LOR: LG68 - Wimbledon Bus Station).

AVAILABILITY: At any time.  
OPERATING RESTRICTIONS: **Turning Point Only - Buses must not stand**  
BLIND DISPLAY: Wimbledon.

### **PHIPP'S BRIDGE (from Raynes Park, Raynes Park Hotel)**

Buses proceed from Church Road departing to Phipp's Bridge Road. Set down in Church Road, at Stop S (36908 - Mount Road, Last Stop on LOR: 36908 - Mount Road) and pick up in Phipp's Bridge Road, at Stop A (33567 - Oxted Close, First Stop on LOR: 33567 - Oxted Close).

AVAILABILITY: At any time.  
OPERATING RESTRICTIONS: **Turning Point Only - Buses must not stand**  
BLIND DISPLAY: Phipp's Bridge.

### **MITCHAM, FAIR GREEN**

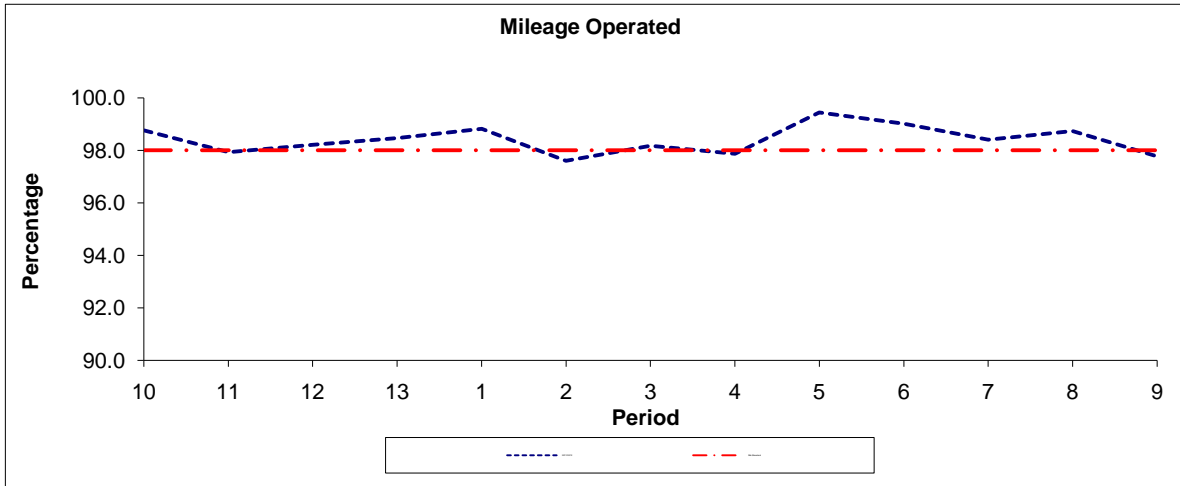
Public stand for two buses standing abreast on the offside of Raleigh Gardens (west arm) in the buses only bay.

Buses proceed from Raleigh Gardens direct to stand, departing to Raleigh Gardens. Set down in Raleigh Gardens, at Stop G (R0677 - Raleigh Gardens, Last Stop on LOR: R0677 - Raleigh Gardens) and pick up in Raleigh Gardens, at Stop G (R0677 - Raleigh Gardens, First Stop on LOR: R0677 - Raleigh Gardens).

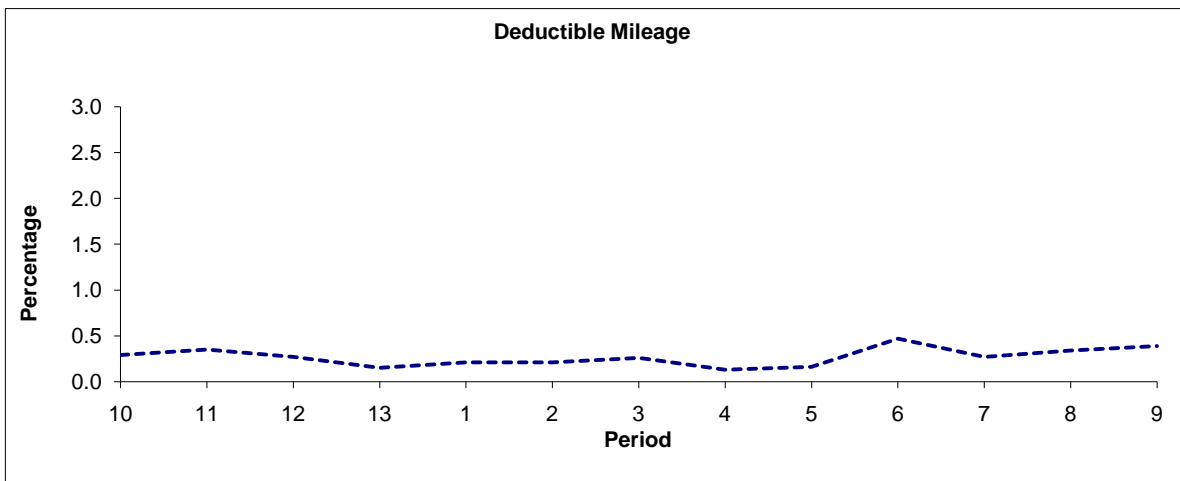
AVAILABILITY: At any time.  
OPERATING RESTRICTIONS: No more than 2 buses on Route 200 should be scheduled to stand at any one time.  
MEAL RELIEFS: No meal relief vehicles to stand at any time.  
FERRY VEHICLES: No ferry vehicles to park on stand at any time.  
BLIND DISPLAY: Mitcham.

**PART B - PERFORMANCE STATISTICS**

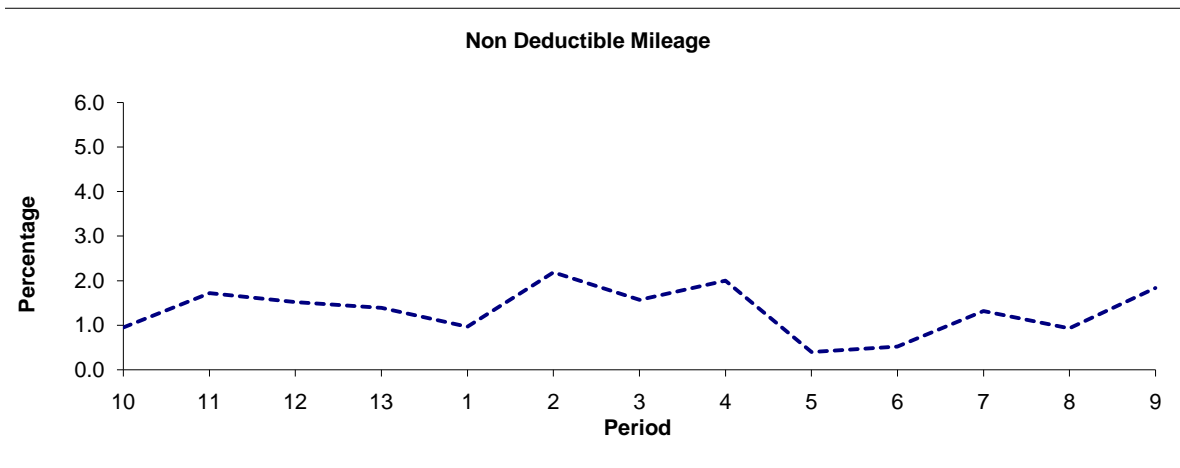
**Route 200**



Period	10	11	12	13	1	2	3	4	5	6	7	8	9
2011/2012	98.76	97.93	98.21	98.46	98.82	97.60	98.17	97.87	99.44	99.01	98.41	98.73	97.77
Min Standard	98.00	98.00	98.00	98.00	98.00	98.00	98.00	98.00	98.00	98.00	98.00	98.00	98.00



Period	10	11	12	13	1	2	3	4	5	6	7	8	9
2011/2012	0.29	0.35	0.27	0.15	0.21	0.21	0.26	0.13	0.16	0.47	0.27	0.34	0.39

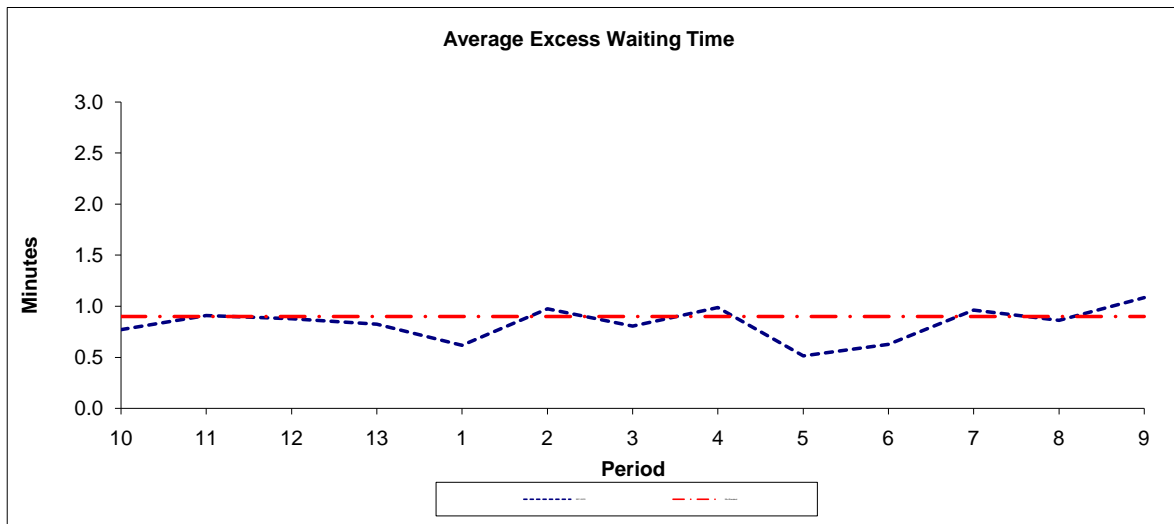


Period	10	11	12	13	1	2	3	4	5	6	7	8	9
2011/2012	0.95	1.72	1.52	1.39	0.97	2.19	1.57	2.00	0.40	0.52	1.32	0.93	1.84

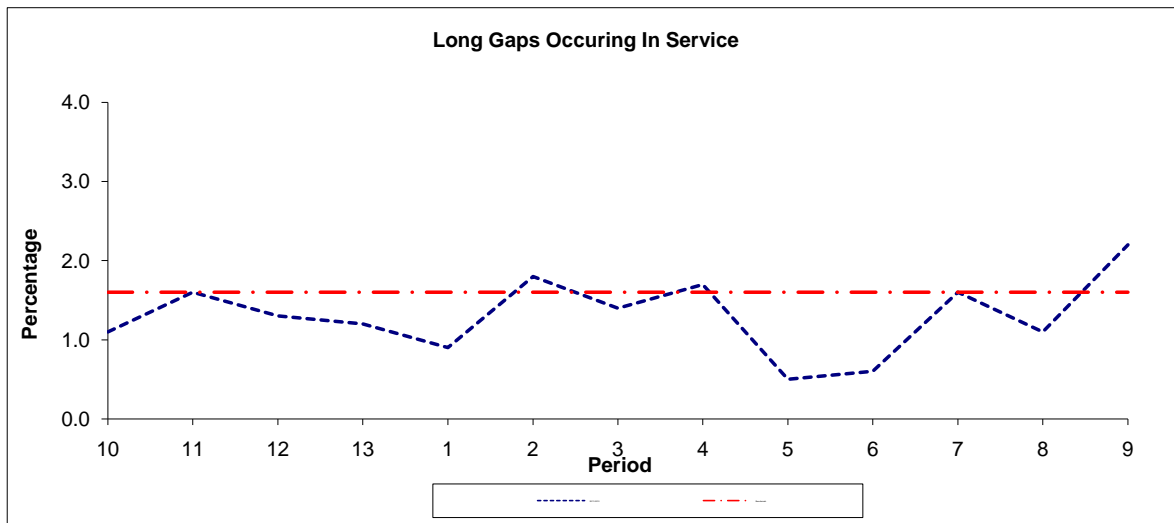
**Note :** Mileage is based on 4 weeks data

**PART B - PERFORMANCE STATISTICS**

**Route 200**



Period	10	11	12	13	1	2	3	4	5	6	7	8	9
2011-2012	0.77	0.91	0.88	0.83	0.62	0.97	0.81	0.99	0.51	0.63	0.96	0.86	1.09
Min Standard	0.90	0.90	0.90	0.90	0.90	0.90	0.90	0.90	0.90	0.90	0.90	0.90	0.90



Period	10	11	12	13	1	2	3	4	5	6	7	8	9
2011-2012	1.10	1.60	1.30	1.20	0.90	1.80	1.40	1.70	0.50	0.60	1.60	1.10	2.20
Benchmark	1.60	1.60	1.60	1.60	1.60	1.60	1.60	1.60	1.60	1.60	1.60	1.60	1.60

**Note :** Reliability is actual performance under full iBus (4 weeks data).  
 Minimum Standards and Benchmarks are those applicable under the new contract.

**ROUTE 200 - FULL iBUS RESULTS BY TIME OF DAY**  
**QUARTER 3 2011/12 TO QUARTER 2 2012/13 (17/09/11 - 14/09/12)**

**MONDAY - FRIDAY**

Time Period	Expected Buses	On AVL (%)	Scheduled Waiting Time (SWT) (mins)	Excess Waiting Time (EWT) (mins)	Actual Waiting Time (AWT) (mins)	Probability of Waiting < 10 mins (%)	Probability of Waiting 10-20 mins (%)	Probability of Waiting 20-30 mins (%)	Probability of Waiting > 30 mins (%)	Long Gaps (%)	Maximum Gap (mins)
0500 - 0700	19,538.	98.1	8.69	<b>0.39</b>	9.08	66.1	30.7	3.1	0.1	0.0	49
0700 - 1000	68,437.	96.4	3.91	<b>1.26</b>	5.17	88.5	10.0	1.2	0.2	3.2	59
1000 - 1300	67,378.	98.4	3.95	<b>0.83</b>	4.78	91.6	8.1	0.2	0.0	1.0	42
1300 - 1600	66,982.	98.9	3.90	<b>1.02</b>	4.92	90.3	9.2	0.4	0.1	1.7	104
1600 - 1900	67,810.	99.3	3.95	<b>0.77</b>	4.73	92.7	6.9	0.3	0.1	1.1	48
1900 - 2200	43,957.	100.4	5.89	<b>0.70</b>	6.58	75.9	22.7	1.2	0.1	0.7	65
2200 - 2400	23,412.	102.1	7.50	<b>0.25</b>	7.75	66.8	32.3	0.8	0.1	0.1	46
<b>Summary</b>	<b>357,514.</b>	<b>98.8</b>	<b>4.45</b>	<b>0.89</b>	<b>5.34</b>	<b>87.3</b>	<b>11.8</b>	<b>0.7</b>	<b>0.1</b>	<b>1.5</b>	<b>104</b>

**SATURDAY**

Time Period	Expected Buses	On AVL (%)	Scheduled Waiting Time (SWT) (mins)	Excess Waiting Time (EWT) (mins)	Actual Waiting Time (AWT) (mins)	Probability of Waiting < 10 mins (%)	Probability of Waiting 10-20 mins (%)	Probability of Waiting 20-30 mins (%)	Probability of Waiting > 30 mins (%)	Long Gaps (%)	Maximum Gap (mins)
0500 - 0700	3,503.	101.1	9.75	<b>0.24</b>	9.99	55.7	40.0	4.2	0.1	0.0	50
0700 - 1000	10,568.	97.8	5.41	<b>0.56</b>	5.97	84.0	15.7	0.3	0.0	0.3	46
1000 - 1300	13,846.	100.2	3.96	<b>0.80</b>	4.76	92.2	7.3	0.4	0.1	1.2	38
1300 - 1600	13,898.	99.0	4.00	<b>0.88</b>	4.88	91.5	8.1	0.4	0.0	1.3	40
1600 - 1900	13,375.	98.8	4.15	<b>0.79</b>	4.93	90.8	8.6	0.5	0.1	1.3	49
1900 - 2200	7,765.	100.6	6.92	<b>0.82</b>	7.75	66.9	30.4	2.4	0.3	0.5	46
2200 - 2400	4,948.	100.5	7.50	<b>0.33</b>	7.83	66.2	32.6	1.1	0.1	0.1	37
<b>Summary</b>	<b>67,903.</b>	<b>99.4</b>	<b>4.85</b>	<b>0.76</b>	<b>5.61</b>	<b>85.6</b>	<b>13.5</b>	<b>0.8</b>	<b>0.1</b>	<b>1.0</b>	<b>50</b>

**SUNDAY AND BANK HOLIDAYS**

Time Period	Expected Buses	On AVL (%)	Scheduled Waiting Time (SWT) (mins)	Excess Waiting Time (EWT) (mins)	Actual Waiting Time (AWT) (mins)	Probability of Waiting < 10 mins (%)	Probability of Waiting 10-20 mins (%)	Probability of Waiting 20-30 mins (%)	Probability of Waiting > 30 mins (%)	Long Gaps (%)	Maximum Gap (mins)
0500 - 0700	1,908.	99.8	9.97	<b>0.12</b>	10.09	67.1	28.9	3.7	0.3	3.5	39
0700 - 1000	7,932.	100.3	7.65	<b>0.43</b>	8.08	67.6	30.7	1.6	0.1	0.0	41
1000 - 1300	10,842.	98.7	5.77	<b>0.74</b>	6.51	78.5	20.2	1.2	0.1	0.6	57
1300 - 1600	10,578.	99.9	5.86	<b>0.67</b>	6.53	78.7	20.3	0.9	0.1	0.3	58
1600 - 1900	10,445.	100.2	5.98	<b>0.52</b>	6.50	78.0	21.4	0.6	0.0	0.2	37
1900 - 2200	8,254.	100.4	7.41	<b>0.37</b>	7.78	66.4	32.6	1.0	0.0	0.0	35
2200 - 2400	5,536.	101.1	7.50	<b>0.22</b>	7.72	66.8	32.5	0.6	0.0	0.0	35
<b>Summary</b>	<b>55,495.</b>	<b>100.0</b>	<b>6.41</b>	<b>0.55</b>	<b>6.96</b>	<b>74.8</b>	<b>24.2</b>	<b>1.0</b>	<b>0.1</b>	<b>0.3</b>	<b>58</b>

**ALL DAYS**

Time Period	Expected Buses	On AVL (%)	Scheduled Waiting Time (SWT) (mins)	Excess Waiting Time (EWT) (mins)	Actual Waiting Time (AWT) (mins)	Probability of Waiting < 10 mins (%)	Probability of Waiting 10-20 mins (%)	Probability of Waiting 20-30 mins (%)	Probability of Waiting > 30 mins (%)	Long Gaps (%)	Maximum Gap (mins)
0500 - 0700	24,949.	98.6	8.86	<b>0.36</b>	9.23	65.0	31.6	3.2	0.1	0.2	50
0700 - 1000	86,937.	96.9	4.22	<b>1.16</b>	5.38	87.1	11.5	1.2	0.2	2.8	59
1000 - 1300	92,066.	98.7	4.16	<b>0.81</b>	4.97	90.2	9.4	0.4	0.0	1.0	57
1300 - 1600	91,458.	99.1	4.12	<b>0.96</b>	5.08	89.2	10.2	0.5	0.1	1.5	104
1600 - 1900	91,630.	99.3	4.17	<b>0.75</b>	4.92	91.1	8.5	0.3	0.1	1.0	49
1900 - 2200	59,976.	100.5	6.19	<b>0.67</b>	6.86	73.8	24.8	1.3	0.1	0.6	65
2200 - 2400	33,896.	101.7	7.50	<b>0.26</b>	7.76	66.7	32.4	0.8	0.1	0.1	46
<b>Summary</b>	<b>480,912.</b>	<b>99.0</b>	<b>4.68</b>	<b>0.84</b>	<b>5.53</b>	<b>85.9</b>	<b>13.2</b>	<b>0.8</b>	<b>0.1</b>	<b>1.3</b>	<b>104</b>

Route 200

TRANCHE 437

Service change

Date

Reason for Issue

Version Detail

QSI Points are highlighted in blue.

OUT DIRECTION				
Timing Point Code	Stop Number	Stop Name	Metres	Miles
RNPGRP	20480	Lambton Road		
	27398	Raynes Park Methodist Church	131	0.08
	19869	Raynes Park Station	343	0.21
	BP855	Spencer Road	456	0.28
	BP854	Orchard Lane	379	0.24
	BP853	Pepys Road	314	0.20
	19085	West Wimbledon / Christ Church	144	0.09
	BP4520	Copse Hill	134	0.08
ATKNCL	BP5720	Atkinson Close / Copse Hill	605	0.38
	36777	Woodhayes Road	676	0.42
	19083	Edge Hill	476	0.30
	19081	Wimbledon Telephone Exchange	479	0.30
	19079	Wimbledon Village / Ridgway	263	0.16
	7604	Wimbledon Hill Road	593	0.37
WIMBSN	29880	Wimbledon Police Station	510	0.32
	29882	Trinity Road	579	0.36
	29884	Craven Gardens	239	0.15
HDNRSN	29886	Haydons Road Station	235	0.15
	18651	Milton Road	390	0.24
	18649	Quicks Road	333	0.21
	18647	Haydons Road / Merton High Street	315	0.20
	18675	Merton High Street / Haydons Road	165	0.10
MERTSY	1785	Merton Abbey	326	0.20
	18673	Colliers Wood Station	330	0.21
	18671	Christ Church	190	0.12
	18669	Runnymede	308	0.19
	36908	Mount Road	320	0.20
PHBRHA	33562	Haslemere Avenue	323	0.20
	33566	Frensham Court	435	0.27
	33568	Oxted Close	324	0.20
	33564	Miles Road	413	0.26
	36889	Hall Place	375	0.23
	BP5331	Glebe Court	390	0.24
MTCHFG	R0677	Raleigh Gardens	362	0.22
Total Route Mileage - Out Direction			11855	7.37
			11855	7.37

BACK DIRECTION				
Timing Point Code	Stop Number	Stop Name	Metres	Miles
MTCHFG	R0677	Raleigh Gardens		
	33892	Glebe Court	401	0.25
	33818	Mitcham / the Cricketers	373	0.23
	33572	Hall Place	237	0.15
	33563	Miles Road	390	0.24
	33567	Oxted Close	254	0.16
	BP4480	Phipps Bridge Tram Stop	258	0.16
	33565	Frensham Court	177	0.11
PHBRHA	33561	Haslemere Avenue	308	0.19
	33559	Mount Road	323	0.20
	LG06	Runnymede	414	0.26
	33644	Colliers Wood Station	527	0.33
MERTSY	LG02	Merton Abbey	464	0.29
	18646	Haydons Road / Merton High Street	314	0.20
	18648	Quicks Road	277	0.17
	18650	Milton Road	326	0.20
HDNRSN	29885	Haydons Road Station	481	0.30
	29883	Craven Gardens	312	0.19
	29881	Trinity Road	278	0.17
	29879	Wimbledon Police Station	471	0.29
	LG68	Wimbledon Bus Station	425	0.26
WIMBSN	LG65	Wimbledon Station	329	0.20
	7603	Wimbledon Hill Road	337	0.21
	19078	Wimbledon Village / Ridgway	553	0.34
	19080	Wimbledon Telephone Exchange	365	0.23
	19082	Edge Hill	306	0.19
	36776	Arterberry Road	381	0.24
	BP4520	Copse Hill	223	0.14
ATKNCL	BP5720	Atkinson Close / Copse Hill	605	0.38
	36777	Woodhayes Road	676	0.42
	19084	West Wimbledon / Christ Church	106	0.07
	19086	Pepys Road	235	0.15
	29815	Orchard Lane	229	0.14
	33377	Spencer Road	373	0.23
	9145	Raynes Park Station	387	0.24
RNPGRP	20480	Lambton Road	118	0.07
Total Route Mileage - Back Direction			12233	7.60
			12233	7.60