

7. Service Specification

Route: 153

QC40105

This Service Specification forms section 7 of the ITT and should be read in conjunction with the ITT document, Version 1 dated 29 September 2011.

You are formally invited to tender for the provision of the bus service detailed below and in accordance with this Service Specification. Tenderers must ensure that a Compliant Tender is submitted and this will only be considered for evaluation if all parts of the Tender documents, as set out in section 11, have been received by the Corporation by the Date of Tender. The Tender must be fully completed in the required format, in accordance with the Instructions to Tenderers. A Compliant Tender must comply fully with the requirements of the Framework Agreement; adhere to the requirements of the Service Specification; and reflect the price of operating the Services with new vehicles.

Terminus Points	Finsbury Park Station, Station Place Stop H to Liverpool Street Bus Station
Contract Basis	Incentivised
Commencement Date	2 nd February 2013
Vehicle Type	60 capacity, dual door, single deck buses will be specified (alternative bids with existing 55 capacity, dual door, single deck buses may also be submitted)
Current Maximum Approved Dimensions	10.2 metres long and 2.4metres wide
New Vehicles Mandatory	No
Hybrid Price Required	No
Sponsored Route	No
Minimum Performance Standard	Average Excess Wait Time - No more than 1.20 minutes
Extension Threshold	Average Excess Wait Time Threshold - 1.05 minutes
Advertising Rights	Operator
Minimum Operated Mileage Standard	No less than 98.00%

The Date of Tender for this ITT is: No later than 12 Noon on 4th January 2012

Tenderers should refer to section 3 of Part A for the Service Specification Explanatory Notes and Appendix B of section 5 for the Example Service Specification of the ITT document.

SERVICE SPECIFICATION

- 1) SERVICE SPEC – ROUTE SPECIFICATION INFORMATION
- 2) NOTES
- 3) SCHEDULE REQUIREMENTS & PINCHPOINTS
- 4) QSI POINTS & MILEAGE
- 5) OPERATIONAL CONSIDERATIONS
- 6) CURRENT PERFORMANCE ROUTE RECORD & IBUS MILEAGE

2) NOTES

Proposed Changes:

At this time, the Corporation expects to implement a change to the existing service prior to the commencement of the new Route Agreement for Route No. 153.

- Until 10th August 2012, Silk Street and Milton Street are westbound operation only due to works connected with the Heron Development. Ex Finsbury Park Station, Station Place Stop H, Route No. 153 is diverted from Beech Street via Chiswell Street and Finsbury Pavement to South Place to re-join line of routeing. Ex Liverpool Street Bus Station, Route No. 153 is diverted from Moorgate via Finsbury Pavement, and Chiswell Street to Beech Street.
- During the closure of Liverpool Street due to Crossrail works, ex Finsbury Park Station, Station Place Stop H, Route No. 153 is diverted from Eldon Street via Blomfield Street, London Wall and Old Broad Street to Sun Street Passage to re-join line of routeing. Ex Liverpool Street Bus Station, Route No. 153 is diverted from Sun Street Passage via Old Broad Street to London Wall to re-join line of routeing. This diversion has been in operation since 18th June 2011 and is expected to last for 5 years. **Please see section 5 for a full list of streets traversed (version 2).**

Tenderers should note that the following alterations (subject to consultation) are proposed as part of this Service Specification for introduction with the new Route Agreement:

Option 1:

- No changes are proposed.

Option 2:

- Sunday shopping period frequencies are increased from every 15 minutes to every 12 minutes.

Options 1 & 2:

- Tenderers should refer to the schedules dated 27th September 2008 rather than the current temporary schedules.
- **Please note, the above diversion in Liverpool Street will operate until Crossrail works are complete and then the permanent routeing will operate. Please see section 5 for a full list of streets traversed for both routeings (version 1 is for the permanent routeing and version 2 is for the Crossrail diversion).**
- 60 capacity, dual door, single deck buses will be specified, subject to a satisfactory route test (alternative bids with existing 55 capacity, dual door, single deck buses may also be submitted).

3) SCHEDULE REQUIREMENTS & PINCHPOINTS

3.1) MONDAY TO FRIDAY SCHEDULE REQUIREMENTS & PINCHPOINTS

Finsbury Park Station, Station Place Stop H to Liverpool Street Bus Station			Liverpool Street Bus Station to Finsbury Park Station, Station Place Alighting Point		
First departure no later than 0455.			First departure no later than 0505.		
0450 - 0555	Every 20 minutes		0500 - 0605	Every 20 minutes	
0556 - 0640	Every 15 minutes		0606 - 0650	Every 15 minutes	
0641 - 1905	Every 12 minutes		0651 - 1905	Every 12 minutes	
1906 - 2050	Every 15 minutes		1906 - 2050	Every 15 minutes	
2051 - 2355	Every 20 minutes		2051 - 0015	Every 20 minutes	
Last departure no earlier than 2350.			Last departure no earlier than 0010.		
Pinchpoints					
Barbican Station	0705 - 0905	12 minutes	Barnsbury, Hemingford Arms	0710 - 0910	12 minutes
	1505 - 1640	12 minutes		1500 - 1635	12 minutes

3.2) SATURDAY AND GOOD FRIDAY SCHEDULE REQUIREMENTS & PINCHPOINTS

Finsbury Park Station, Station Place Stop H to Liverpool Street Bus Station			Liverpool Street Bus Station to Finsbury Park Station, Station Place Alighting Point		
First departure no later than 0455.			First departure no later than 0505.		
0450 - 0715	Every 20 minutes		0500 - 0705	Every 20 minutes	
0716 - 0830	Every 15 minutes		0706 - 0820	Every 15 minutes	
0831 - 1905	Every 12 minutes		0821 - 1905	Every 12 minutes	
1906 - 2050	Every 15 minutes		1906 - 2050	Every 15 minutes	
2051 - 2355	Every 20 minutes		2051 - 0015	Every 20 minutes	
Last departure no earlier than 2350.			Last departure no earlier than 0010.		
Pinchpoints					
Barbican Station	0900 - 1100	12 minutes	Barnsbury, Hemingford Arms	0840 - 1105	12 minutes

3) SCHEDULE REQUIREMENTS & PINCHPOINTS - continued

3.3) SUNDAY AND PUBLIC HOLIDAY SCHEDULE REQUIREMENTS & PINCHPOINTS

OPTION 1

Finsbury Park Station, Station Place Stop H to Liverpool Street Bus Station		Liverpool Street Bus Station to Finsbury Park Station, Station Place Alighting Point			
First departure no later than 0640.		First departure no later than 0650.			
0635 - 0840	Every 20 minutes	0645 - 0810	Every 20 minutes		
0841 - 2050	Every 15 minutes	0811 - 2050	Every 15 minutes		
2051 - 2355	Every 20 minutes	2051 - 0015	Every 20 minutes		
Last departure no earlier than 2350.		Last departure no earlier than 0010.			
Pinchpoints					
Barbican Station	1035 - 1135	15 minutes	Barnsbury, Hemingford Arms	1035 - 1135	15 minutes

OPTION 2

Finsbury Park Station, Station Place Stop H to Liverpool Street Bus Station		Liverpool Street Bus Station to Finsbury Park Station, Station Place Alighting Point			
First departure no later than 0640.		First departure no later than 0650.			
0635 - 0840	Every 20 minutes	0645 - 0810	Every 20 minutes		
0841 - 0910	Every 15 minutes	0811 - 0840	Every 15 minutes		
0911 - 1905	Every 12 minutes	0841 - 1905	Every 12 minutes		
1906 - 2050	Every 15 minutes	1906 - 2050	Every 15 minutes		
2051 - 2355	Every 20 minutes	2051 - 0015	Every 20 minutes		
Last departure no earlier than 2350.		Last departure no earlier than 0010.			
Pinchpoints					
Barbican Station	1035 - 1135	12 minutes	Barnsbury, Hemingford Arms	1035 - 1135	12 minutes

3.4) BOXING DAY SCHEDULE REQUIREMENTS & PINCHPOINTS

OPTION 1

Finsbury Park Station, Station Place Stop H to Liverpool Street Bus Station		Liverpool Street Bus Station to Finsbury Park Station, Station Place Alighting Point			
First departure no later than 0800.		First departure no later than 0815.			
0755 - 0840	Every 20 minutes	0810 - 2050	Every 15 minutes		
0841 - 2050	Every 15 minutes	2051 - 0015	Every 20 minutes		
2051 - 2355	Every 20 minutes				
Last departure no earlier than 2350.		Last departure no earlier than 0010.			
Pinchpoints					
Barbican Station	1035 - 1135	15 minutes	Barnsbury, Hemingford Arms	1035 - 1135	15 minutes

3.4) BOXING DAY SCHEDULE REQUIREMENTS & PINCHPOINTS - continued

OPTION 2

Finsbury Park Station, Station Place Stop H to Liverpool Street Bus Station		Liverpool Street Bus Station to Finsbury Park Station, Station Place Alighting Point			
First departure no later than 0800.		First departure no later than 0815.			
0755 - 0840	Every 20 minutes	0810 - 0840	Every 15 minutes		
0841 - 0910	Every 15 minutes	0841 - 1905	Every 12 minutes		
0911 - 1905	Every 12 minutes	1906 - 2050	Every 15 minutes		
1906 - 2050	Every 15 minutes	2051 - 0015	Every 20 minutes		
2051 - 2355	Every 20 minutes				
Last departure no earlier than 2350.		Last departure no earlier than 0010.			
Pinchpoints					
Barbican Station	1035 - 1135	12 minutes	Barnsbury, Hemingford Arms	1035 - 1135	12 minutes

4) QSI POINTS & MILEAGE

It is intended Route No. 153 will have 80 surveys per quarter at the following locations:

QSI POINTS	
Towards Liverpool Street Bus Station	Towards Finsbury Park Station, Station Place Alighting Point
Finsbury Park	Liverpool Street
Islington Angel \$	Barbican
	Islington Angel \$
MILEAGE: See Attached iBus Sheets (mileage sheet dated 24th August 2009 is for the permanent routing and the mileage sheet dated 18th June 2011 is for the Crossrail diversion).	

\$ This location is recorded simultaneously in both directions - counted as two surveys.

Please note, the attached mileage for the Crossrail diversion includes the diversion due to the works on Silk Street and Milton Street (see section 1 for details). Please note, the mileage will be modified on 11th August 2012 when the normal routing in this section commences.

5) OPERATIONAL CONSIDERATIONS

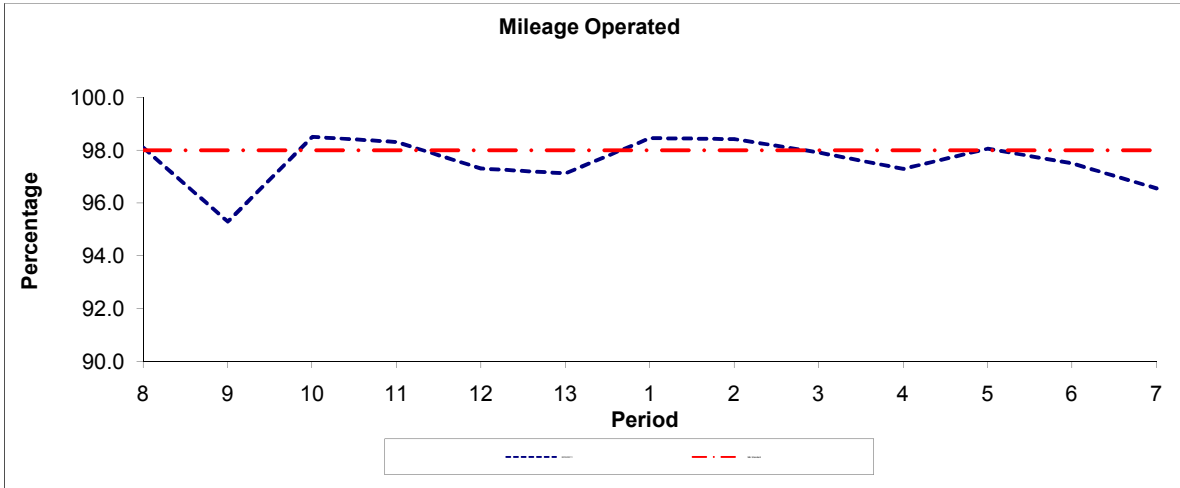
- 5.1) When compiling schedules Tenderers are asked to consider passengers making connections to other services at the following locations: Finsbury Park LUL & rail station, Holloway Road LUL station, Barbican LUL & rail station, Moorgate LUL & rail station and Liverpool Street LUL & rail station.
- 5.2) Route No. 153 can suffer from unpredictable traffic delays in the Finsbury Park, Holloway, Islington, Moorgate and Liverpool Street areas.
- 5.3) Route No. 153 can suffer from major disruptions in the Finsbury Park area during home matches of Arsenal Football Club.
- 5.4) Crossrail will connect the City, Canary Wharf, the West End and Heathrow Airport to commuter areas east and west of the capital. Major construction of the railway began in 2010, with services expected to commence in 2018. It is anticipated that some passenger demand for Route No. 153 would shift to this line when it opens. Route No. 153 will be reviewed closer to the opening date. Expected changes in demand as a result of Crossrail will be reviewed separately.

6) CURRENT PERFORMANCE, ROUTE RECORD & IBUS MILEAGE

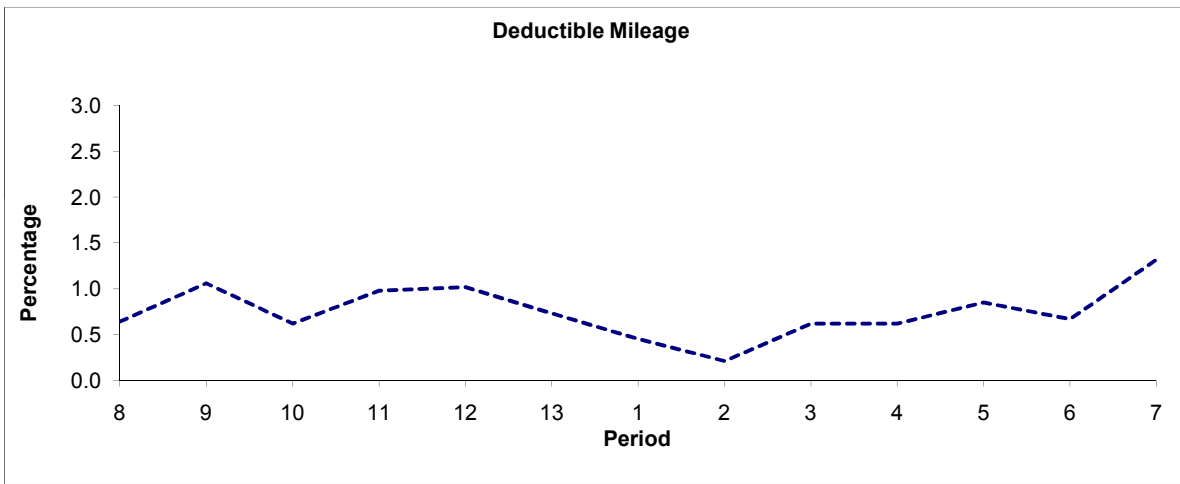
- 6.1) CURRENT PERFORMANCE
As per current print out.
- 6.2) ROUTE RECORD
As per Busnet Printout.
- 6.3) IBUS MILEAGE
As per current print out.

PART B - PERFORMANCE STATISTICS

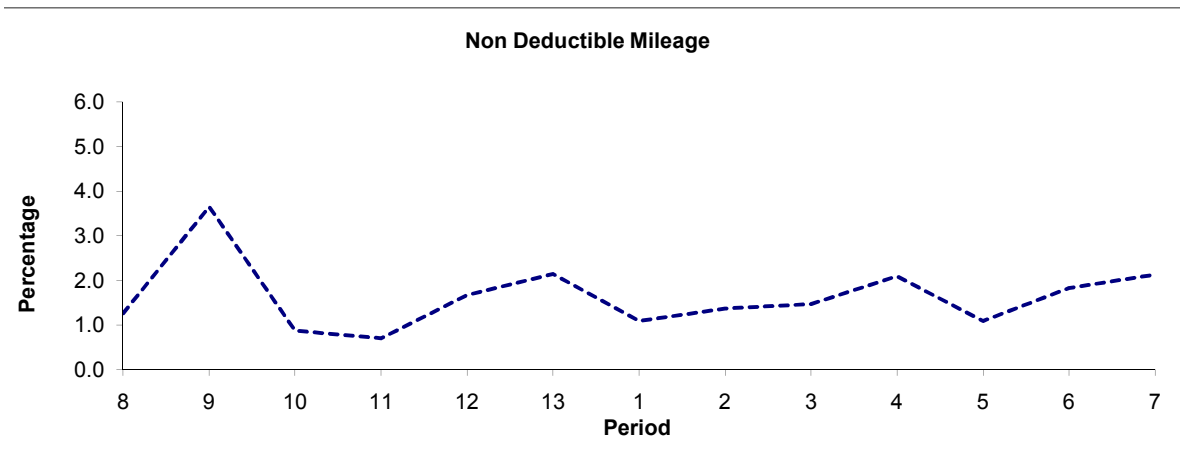
Route 153



Period	8	9	10	11	12	13	1	2	3	4	5	6	7
2010/2011	98.10	95.29	98.51	98.32	97.31	97.13	98.46	98.42	97.91	97.29	98.06	97.50	96.55
Min Standard	98.00	98.00	98.00	98.00	98.00	98.00	98.00	98.00	98.00	98.00	98.00	98.00	98.00



Period	8	9	10	11	12	13	1	2	3	4	5	6	7
2010/2011	0.64	1.06	0.62	0.98	1.02	0.73	0.45	0.21	0.62	0.62	0.85	0.67	1.32

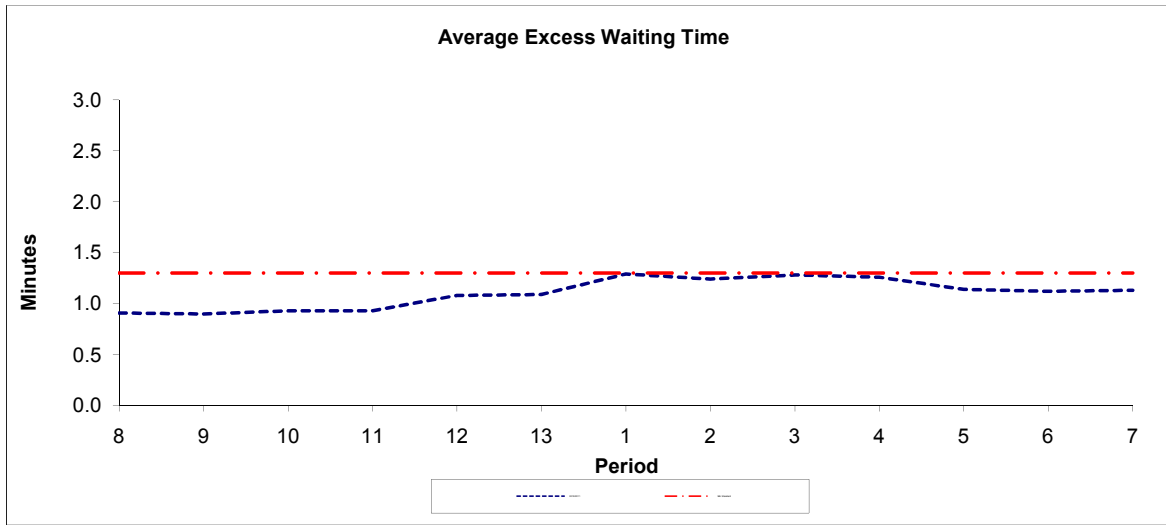


Period	8	9	10	11	12	13	1	2	3	4	5	6	7
2010/2011	1.26	3.65	0.87	0.70	1.67	2.14	1.09	1.37	1.47	2.09	1.09	1.83	2.13

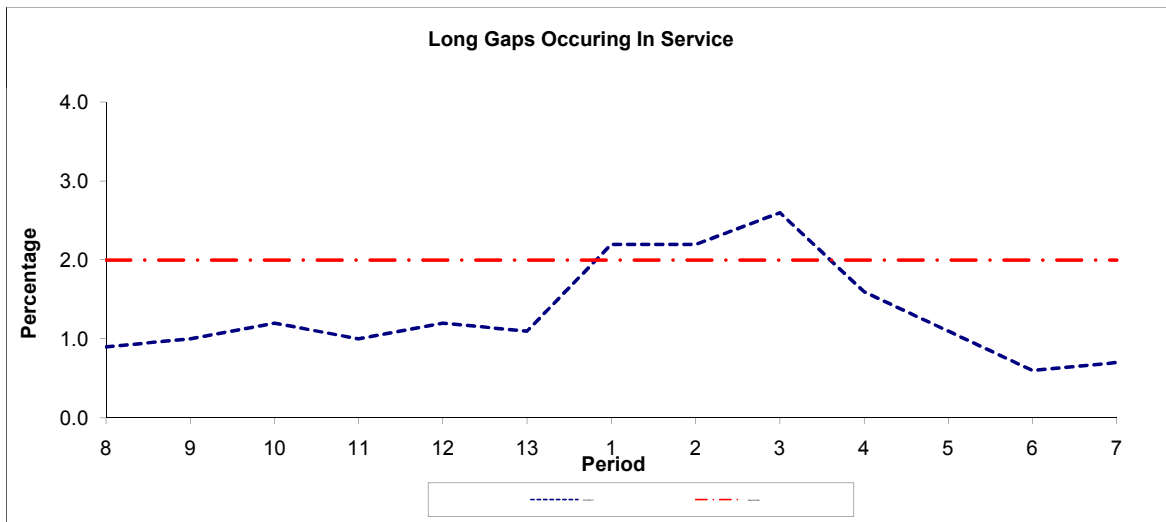
Note : Mileage is based on 4 weeks data

PART B - PERFORMANCE STATISTICS

Route 153



Period	8	9	10	11	12	13	1	2	3	4	5	6	7
2010/2011	0.91	0.90	0.93	0.93	1.08	1.09	1.29	1.24	1.28	1.26	1.14	1.12	1.13
Min Standard	1.30	1.30	1.30	1.30	1.30	1.30	1.30	1.30	1.30	1.30	1.30	1.30	1.30



Period	8	9	10	11	12	13	1	2	3	4	5	6	7
2010/2011	0.90	1.00	1.20	1.00	1.20	1.10	2.20	2.20	2.60	1.60	1.10	0.60	0.70
Benchmark	2.00	2.00	2.00	2.00	2.00	2.00	2.00	2.00	2.00	2.00	2.00	2.00	2.00

Note : Reliability is based on 12 weeks rolling data

LONDON BUSES - ROUTE DESCRIPTION

ROUTE 153: Finsbury Park Station - Liverpool Street Station

Date of Structural Change: 2 February 2013.

Date of Service Change: 2 February 2013.

Reason for Issue: New Tender - version 1 - normal line of route.

STREETS TRAVERSED

Towards Liverpool Street Station: Station Place, Stroud Green Road, Seven Sisters Road, Blackstock Road, Rock Street, St Thomas's Road, Seven Sisters Road, Isledon Road, Tollington Road, Holloway Road, Liverpool Road, Mackenzie Road, Westbourne Road, Offord Road, Hemingford Road, Copenhagen Street, Barnsbury Road, Tolpuddle Street, Liverpool Road, Islington High Street, St John Street, Clerkenwell Road, Goswell Road, Aldersgate Street, Beech Street, Silk Street, Moor Lane, Ropemaker Street, South Place, Eldon Street, Blomfield Street, Road Closed - Do Not Use This Link, Liverpool Street, Sun Street Passage.

Towards Finsbury Park Station: Sun Street Passage, Liverpool Street, Road Closed - Do Not Use This Link, Blomfield Street, London Wall, Moorgate, Ropemaker Street, Moor Lane, Silk Street, Beech Street, Aldersgate Street, Goswell Road, Clerkenwell Road, St John Street, Islington High Street, Liverpool Road, Tolpuddle Street, Barnsbury Road, Copenhagen Street, Hemingford Road, Offord Road, Westbourne Road, Mackenzie Road, Palmer Place, Holloway Road, Parkhurst Road, Seven Sisters Road, Station Place.

AUTHORISED STANDS, CURTAILMENT POINTS, & BLIND DESCRIPTIONS

Please note that only stands, curtailment points, & blind descriptions as detailed in this contractual document may be used.

FINSBURY PARK STATION, STATION PLACE, EAST SIDE

Private offside stand for 3 buses in marked bays on east side of Station Place commencing outside Flats Nos. 1 and 3 and extending 37 metres south.

Buses proceed from Station Place direct to stand, departing to Station Place. Set down in Station Place, at Alighting Point (R0001 - Finsbury Park Interchange < > #, Last Stop on LOR: R0001 - Finsbury Park Interchange < > #) and pick up in Station Place, at Stop H (R0002 - Finsbury Park Interchange < > #, First Stop on LOR: R0002 - Finsbury Park Interchange < > #).

AVAILABILITY: At any time.
OPERATING RESTRICTIONS: No more than 2 buses on Route 153 should be scheduled to stand at any one time.
MEAL RELIEFS: No meal relief vehicles to stand at any time.
FERRY VEHICLES: No ferry vehicles to park on stand at any time.
BLIND DISPLAY: Finsbury Park Station.

HOLLOWAY, NAG'S HEAD (from LIVERPOOL STREET STATION)

Buses proceed from Seven Sisters Road via Hertslet Road and Tollington Road departing to Holloway Road. Set down in Seven Sisters Road, at Stop H (315 - Seven Sisters Road / Nags Head, Last Stop on LOR: 315 - Seven Sisters Road / Nags Head) and pick up in Holloway Road, at Stop S (797 - Tollington Road, First Stop on LOR: 797 - Tollington Road).

AVAILABILITY: At any time.
OPERATING RESTRICTIONS: **Turning Point Only - Buses must not stand**
BLIND DISPLAY: Holloway, Nag's Head.

BARNSBURY, HEMINGFORD ARMS (from Finsbury Park Station)

Buses proceed from Westbourne Road via Offord Road, Caledonian Road, Wheelwright Street, Roman Way and Offord Road departing to Westbourne Road. Set down in Westbourne Road, at Stop V (37038 - Offord Road, Last Stop on LOR: 37038 - Offord Road) and pick up in Westbourne Road, at Stop W (37048 - Westbourne Road / Arundel Square, First Stop on LOR: 37048 - Westbourne Road / Arundel Square).

AVAILABILITY: At any time.
OPERATING RESTRICTIONS: **Turning Point Only - Buses must not stand**
BLIND DISPLAY: Barnsbury, Offord Road.

ISLINGTON, ANGEL (GOSWELL ROAD) (from Finsbury Park Station)

Public stand on north west side of Goswell Road in two portions:

1 - for three buses, commencing opposite the part wall of no.332 and extending 30 metres north west.

2 - for two buses, commencing opposite no.356 and extending 21 metres north west. Buses proceed from Tolpuddle Street via Liverpool Road, Islington High Street, City Road, Wakley Street and Goswell Road to stand, departing via Goswell Road, City Road, Islington High Street and Liverpool Road to Tolpuddle Street. Set down in Tolpuddle Street, at Stop W (BP1392 - Liverpool Road / Chapel Market, Last Stop on LOR: BP1392 - Liverpool Road / Chapel Market) and pick up in Tolpuddle Street, at Stop V (37040 - Chapel Market, First Stop on LOR: 37040 - Chapel Market).

AVAILABILITY: At any time.
OPERATING RESTRICTIONS: Unscheduled curtailments only.
MEAL RELIEFS: No meal relief vehicles to stand at any time.
FERRY VEHICLES: No ferry vehicles to park on stand at any time.
BLIND DISPLAY: Islington Angel.

CLERKENWELL GREEN [NORTH SIDE] (from Finsbury Park Station)

Public stand for one bus on north side of Clerkenwell Green, commencing at the north east flank wall of No 32 and extending 12 metres south west.

Buses proceed from St John Street via Clerkenwell Road and Farringdon Lane to stand, departing via Farringdon Lane, Clerkenwell Green and Clerkenwell Road to St John Street. Set down in St John Street (12230 - St John Street / Clerkenwell Road, Last Stop on LOR: 12230 - St John Street / Clerkenwell Road) and pick up in St John Street (33604 - Aylesbury Street, First Stop on LOR: 33604 - Aylesbury Street).

AVAILABILITY: At any time.
OPERATING RESTRICTIONS: Unscheduled curtailments only
MEAL RELIEFS: No meal relief vehicles to stand at any time.
FERRY VEHICLES: No ferry vehicles to park on stand at any time.
BLIND DISPLAY: Clerkenwell Green.

BARBICAN STATION (from Finsbury Park Station)

Buses proceed from Goswell Road via Aldersgate Street and Museum Of London Roundabout departing to Aldersgate Street. Set down in Goswell Road, at Stop BB (2286 - Barbican Station <>, Last Stop on LOR: 2286 - Barbican Station <>) and pick up in Aldersgate Street, from Stop BA (2287 - Barbican Station <> #, First Stop on LOR: 2287 - Barbican Station <> #).

AVAILABILITY: At any time.
OPERATING RESTRICTIONS: **Turning Point Only - Buses must not stand**
BLIND DISPLAY: Barbican Station.

LIVERPOOL STREET BUS STATION

Private stand in Liverpool Street Bus Station in Sun Street Passage. Six buses can stand in the enclosed section and five in Sun Street Passage. Routes are allocated to specific stands.

Buses proceed from Sun Street Passage via Liverpool Street Bus Station to stand, departing via Liverpool Street Bus Station to Sun Street Passage. Set down in Sun Street Passage (OC509 - Liverpool Street Station, Last Stop on LOR: OC509 - Liverpool Street Station) and pick up in Sun Street Passage, at Stop C (R0815 - Liverpool Street Station <#>, First Stop on LOR: R0815 - Liverpool Street Station <#>).

AVAILABILITY:	At any time.
OPERATING RESTRICTIONS:	No more than 1 bus on Route 153 should be scheduled to stand at any one time.
MEAL RELIEFS:	No meal relief vehicles to stand at any time.
FERRY VEHICLES:	No ferry vehicles to park on stand at any time.
BLIND DISPLAY:	Liverpool Street.

LONDON BUSES - ROUTE DESCRIPTION

ROUTE 153: Finsbury Park Station - Liverpool Street Station

Date of Structural Change: 3 February 2013.

Date of Service Change: 3 February 2013.

Reason for Issue: New Tender - version 2 - long term diversion away from Liverpool Street.

STREETS TRAVERSED

Towards Liverpool Street Station: Station Place, Stroud Green Road, Seven Sisters Road, Blackstock Road, Rock Street, St Thomas's Road, Seven Sisters Road, Isledon Road, Tollington Road, Holloway Road, Liverpool Road, Mackenzie Road, Westbourne Road, Offord Road, Hemingford Road, Copenhagen Street, Barnsbury Road, Tolpuddle Street, Liverpool Road, Islington High Street, St John Street, Clerkenwell Road, Goswell Road, Aldersgate Street, Beech Street, Silk Street, Moor Lane, Ropemaker Street, South Place, Eldon Street, Blomfield Street, London Wall, Old Broad Street, Sun Street Passage.

Towards Finsbury Park Station: Sun Street Passage, Old Broad Street, London Wall, Moorgate, Ropemaker Street, Moor Lane, Silk Street, Beech Street, Aldersgate Street, Goswell Road, Clerkenwell Road, St John Street, Islington High Street, Liverpool Road, Tolpuddle Street, Barnsbury Road, Copenhagen Street, Hemingford Road, Offord Road, Westbourne Road, Mackenzie Road, Palmer Place, Holloway Road, Parkhurst Road, Seven Sisters Road, Station Place.

AUTHORISED STANDS, CURTAILMENT POINTS, & BLIND DESCRIPTIONS

Please note that only stands, curtailment points, & blind descriptions as detailed in this contractual document may be used.

FINSBURY PARK STATION, STATION PLACE, EAST SIDE

Private offside stand for 3 buses in marked bays on east side of Station Place commencing outside Flats Nos. 1 and 3 and extending 37 metres south.

Buses proceed from Station Place direct to stand, departing to Station Place. Set down in Station Place, at Alighting Point (R0001 - Finsbury Park Interchange < > #, Last Stop on LOR: R0001 - Finsbury Park Interchange < > #) and pick up in Station Place, at Stop H (R0002 - Finsbury Park Interchange < > #, First Stop on LOR: R0002 - Finsbury Park Interchange < > #).

AVAILABILITY: At any time.
OPERATING RESTRICTIONS: No more than 2 buses on Route 153 should be scheduled to stand at any one time.
MEAL RELIEFS: No meal relief vehicles to stand at any time.
FERRY VEHICLES: No ferry vehicles to park on stand at any time.
BLIND DISPLAY: Finsbury Park Station.

HOLLOWAY, NAG'S HEAD (from LIVERPOOL STREET STATION)

Buses proceed from Seven Sisters Road via Hertslet Road and Tollington Road departing to Holloway Road. Set down in Seven Sisters Road, at Stop H (315 - Seven Sisters Road / Nags Head, Last Stop on LOR: 315 - Seven Sisters Road / Nags Head) and pick up in Holloway Road, at Stop S (797 - Tollington Road, First Stop on LOR: 797 - Tollington Road).

AVAILABILITY: At any time.
OPERATING RESTRICTIONS: **Turning Point Only - Buses must not stand**
BLIND DISPLAY: Holloway, Nag's Head.

BARNSBURY, HEMINGFORD ARMS (from Finsbury Park Station)

Buses proceed from Westbourne Road via Offord Road, Caledonian Road, Wheelwright Street, Roman Way and Offord Road departing to Westbourne Road. Set down in Westbourne Road, at Stop V (37038 - Offord Road, Last Stop on LOR: 37038 - Offord Road) and pick up in Westbourne Road, at Stop W (37048 - Westbourne Road / Arundel Square, First Stop on LOR: 37048 - Westbourne Road / Arundel Square).

AVAILABILITY: At any time.
OPERATING RESTRICTIONS: **Turning Point Only - Buses must not stand**
BLIND DISPLAY: Barnsbury, Offord Road.

ISLINGTON, ANGEL (GOSWELL ROAD) (from Finsbury Park Station)

Public stand on north west side of Goswell Road in two portions:

1 - for three buses, commencing opposite the part wall of no.332 and extending 30 metres north west.

2 - for two buses, commencing opposite no.356 and extending 21 metres north west. Buses proceed from Tolpuddle Street via Liverpool Road, Islington High Street, City Road, Wakley Street and Goswell Road to stand, departing via Goswell Road, City Road, Islington High Street and Liverpool Road to Tolpuddle Street. Set down in Tolpuddle Street, at Stop W (BP1392 - Liverpool Road / Chapel Market, Last Stop on LOR: BP1392 - Liverpool Road / Chapel Market) and pick up in Tolpuddle Street, at Stop V (37040 - Chapel Market, First Stop on LOR: 37040 - Chapel Market).

AVAILABILITY: At any time.
OPERATING RESTRICTIONS: Unscheduled curtailments only.
MEAL RELIEFS: No meal relief vehicles to stand at any time.
FERRY VEHICLES: No ferry vehicles to park on stand at any time.
BLIND DISPLAY: Islington Angel.

CLERKENWELL GREEN [NORTH SIDE] (from Finsbury Park Station)

Public stand for one bus on north side of Clerkenwell Green, commencing at the north east flank wall of No 32 and extending 12 metres south west.

Buses proceed from St John Street via Clerkenwell Road and Farringdon Lane to stand, departing via Farringdon Lane, Clerkenwell Green and Clerkenwell Road to St John Street. Set down in St John Street (12230 - St John Street / Clerkenwell Road, Last Stop on LOR: 12230 - St John Street / Clerkenwell Road) and pick up in St John Street (33604 - Aylesbury Street, First Stop on LOR: 33604 - Aylesbury Street).

AVAILABILITY: At any time.
OPERATING RESTRICTIONS: Unscheduled curtailments only
MEAL RELIEFS: No meal relief vehicles to stand at any time.
FERRY VEHICLES: No ferry vehicles to park on stand at any time.
BLIND DISPLAY: Clerkenwell Green.

BARBICAN STATION (from Finsbury Park Station)

Buses proceed from Goswell Road via Aldersgate Street and Museum Of London Roundabout departing to Aldersgate Street. Set down in Goswell Road, at Stop BB (2286 - Barbican Station <>, Last Stop on LOR: 2286 - Barbican Station <>) and pick up in Aldersgate Street, from Stop BA (2287 - Barbican Station <> #, First Stop on LOR: 2287 - Barbican Station <> #).

AVAILABILITY: At any time.
OPERATING RESTRICTIONS: **Turning Point Only - Buses must not stand**
BLIND DISPLAY: Barbican Station.

LIVERPOOL STREET BUS STATION

Private stand in Liverpool Street Bus Station in Sun Street Passage. Six buses can stand in the enclosed section and five in Sun Street Passage. Routes are allocated to specific stands.

Buses proceed from Sun Street Passage via Liverpool Street Bus Station to stand, departing via Liverpool Street Bus Station to Sun Street Passage. Set down in Sun Street Passage (OC509 - Liverpool Street Station, Last Stop on LOR: OC509 - Liverpool Street Station) and pick up in Sun Street Passage, at Stop C (R0815 - Liverpool Street Station <#>, First Stop on LOR: R0815 - Liverpool Street Station <#>).

AVAILABILITY:	At any time.
OPERATING RESTRICTIONS:	No more than 1 bus on Route 153 should be scheduled to stand at any one time.
MEAL RELIEFS:	No meal relief vehicles to stand at any time.
FERRY VEHICLES:	No ferry vehicles to park on stand at any time.
BLIND DISPLAY:	Liverpool Street.

Transport for London - Live Mileage List

Route Number: 153
 Service Change Number 20046
 Date 24th August 2009

OUT DIRECTION

Timing Point				
Code	Stop Number	Stop Name	Metres	Miles
FNPKSPE	FNPKSPE	Finsbury Park Station, Station Place, East Side		
FNPKSPH	R0002	Finsbury Park Interchange	0	0.00
	20583	Rock Street	230	0.14
	BP3912	Finsbury Park Station	158	0.10
	33319	Isledon Road	173	0.11
	33320	Berriman Road	385	0.24
	33321	Hornsey Road / Sobell Centre	226	0.14
	36800	Holloway Road	271	0.17
HOLLHR	797	Tollington Road	238	0.15
	10010	Holloway Road Station	463	0.29
	37036	Liverpool Road	286	0.18
	37051	Lough Road	224	0.14
	37035	Westbourne Road	234	0.15
	37052	Ellington Street / Arundel Square	247	0.15
	37038	Offord Road	234	0.15
	37053	The Hemingford Arms	280	0.17
BSBYHA	37054	Richmond Avenue	324	0.20
	37055	Copenhagen Street	324	0.20
	BP1391	Barnsbury Road	340	0.21
ISLNSY	BP1392	Liverpool Road / Chapel Market	360	0.22
	297	The Angel Centre / St John Street	521	0.32
	12237	Friend Street / Sadler's Wells Theatre	242	0.15
	12236	Spencer Street / City University	235	0.15
	12232	Percival Street	262	0.16
CLERSJ	12230	Clerkenwell Road	188	0.12
	13467	Goswell Road / Aldersgate Street	265	0.16
	8394	Baltic Street	208	0.13
BARBSN	2286	Barbican Station	160	0.10
	BP2826	Beech Street	309	0.19
	BP2828	Barbican Centre	324	0.20
	BP2861	Moorgate	276	0.17
	BP969	Eldon Street / Liverpool Street Station	271	0.17
LVSTBS	OC509	Liverpool Street Station	221	0.14
LVSTBS S	LVSTBS S	LIVERPOOL STREET BUS STATION	0	0.00

TOTAL ROUTE

8479 metres
 5.27 miles

BACK DIRECTION				
Timing Point				
Code	Stop Number	Stop Name	Metres	Miles
LVSTBS S	LVSTBS S	LIVERPOOL STREET BUS STATION		
LVSTBS	R0815	Liverpool Street Station	0	0.00
	1160	Moorgate Station	705	0.44
	BP2829	Barbican Centre	372	0.23
	BP2827	Beech Street	178	0.11
BARBSN	2287	Barbican Station	431	0.27
	8393	Clerkenwell Road / Old Street	277	0.17
CLERSJ	13466	St John Street	259	0.16
	33604	Aylesbury Street	210	0.13
	12233	Percival Street	193	0.12
	12235	Spencer Street / City University	248	0.15
	12238	Rosebery Avenue / Sadler's Wells Theatre	238	0.15
	1017	The Angel Centre / Pentonville Road	233	0.14
ISLNSY	37040	Chapel Market	457	0.28
	37626	Penton Street / Islington Police Station	204	0.13
	37627	Copenhagen Street	216	0.13
	37045	Hemingford Road	324	0.20
BSBYHA	37046	Richmond Avenue	236	0.15
	37047	The Hemingford Arms	386	0.24
	37048	Westbourne Road / Arundel Square	329	0.20
	BP2649	Ellington Street	163	0.10
	37049	Mackenzie Road	266	0.17
	37037	Lough Road	188	0.12
	37050	Liverpool Road	140	0.09
	1084	Liverpool Road	244	0.15
	10011	Holloway Road Station	315	0.20
HOLLHR	796	Camden Road	353	0.22
	314	Nags Head, Holloway	186	0.12
	315	Seven Sisters Road	302	0.19
	1291	Hornsey Road	212	0.13
	1293	Durham Road	432	0.27
	34055	Fonthill Road	200	0.12
	BP4242	Finsbury Park Station	153	0.10
FNPKSPA	R0001	Finsbury Park Interchange	101	0.06
FNPKSPES	FNPKSPES	Finsbury Park Station, Station Place, East Side	0	0.00
TOTAL ROUTE			8751	5.44
			metres	miles

Transport for London - Live Mileage List

Route 153
 Service change 23695
 Date 18 June 2011
 Version Detail

Reason for Issue

OUT DIRECTION						
Timing Point	Code	Stop Number	Stop Name	Metres	Miles	
FNPKSPH		R0002	Finsbury Park Interchange			
		20583	Rock Street	230	0.14	
		BP3912	Finsbury Park Station	158	0.10	
		33319	Isledon Road	173	0.11	
		33320	Berriman Road	385	0.24	
		33321	Hornsey Road / Sobell Centre	226	0.14	
		36800	Holloway Road / Camden Road	269	0.17	
	HOLLHR		797	Tollington Road	238	0.15
			10010	Holloway Road Station	463	0.29
			37036	Liverpool Road	286	0.18
		37051	Lough Road	224	0.14	
		37035	Westbourne Road / Jupiter Way	234	0.15	
		37052	Ellington Street / Arundel Square	247	0.15	
		37038	Offord Road	234	0.15	
		37053	The Hemingford Arms	280	0.17	
BSBYHA			37054	Richmond Avenue	324	0.20
			37055	Copenhagen Street	324	0.20
		BP1391	Barnsbury Road	340	0.21	
ISLNSY		BP1392	Liverpool Road / Chapel Market	360	0.22	
		297	St John Street / Goswell Road	521	0.32	
		12237	Friend Street / Sadler's Wells Theatre	242	0.15	
		12236	Spencer Street / City University	235	0.15	
		12232	Percival Street	262	0.16	
CLERSJ		12230	St John Street / Clerkenwell Road	188	0.12	
		13467	Goswell Road / Aldersgate Street	265	0.16	
		8394	Baltic Street	208	0.13	
BARBSN		2286	Barbican Station	160	0.10	
		BP2826	Beech Street	309	0.19	
		BP5536	Chiswell Street / Finsbury Square	423	0.26	
		2462	Finsbury Square	128	0.08	
BP969		BP969	Eldon Street / Liverpool Street Stn	314	0.20	
	LVSTBS	OC509	Liverpool Street Station	566	0.35	
TOTAL ROUTE MILEAGE - OUT DIRECTION				8816	5.48	
				metres	miles	

Diversion due to Crossrail

BACK DIRECTION				
Timing Point				
Code	Stop Number	Stop Name	Metres	Miles
LVSTBS	R0815	Liverpool Street Station		
	1160	Moorgate Station	757	0.47
	BP5537	Chiswell Street / Finsbury Square	295	0.18
	BP5535	Chiswell Street / Silk Street	233	0.14
BARBSN	2287	Barbican Station	454	0.28
	8393	Clerkenwell Road / Old Street	277	0.17
CLERSJ	13466	Clerkenwell Road / St John Street	259	0.16
	33604	Aylesbury Street	210	0.13
	12233	Percival Street	193	0.12
	12235	Spencer Street / City University	248	0.15
	12238	sebery Avenue / Sadler's Wells Thea	238	0.15
	1017	St John Street / Goswell Road	233	0.14
ISLSNY	37040	Chapel Market	457	0.28
	37626	enton Street / Islington Police Statio	204	0.13
	37627	Copenhagen Street	216	0.13
	37045	Hemingford Road	324	0.20
BSBYHA	37046	Richmond Avenue	236	0.15
	37047	The Hemingford Arms	386	0.24
	37048	Westbourne Road / Arundel Square	329	0.20
	BP2649	Ellington Street	163	0.10
	37049	Westbourne Road / Jupiter Way	266	0.17
	37037	Lough Road	188	0.12
	37050	Liverpool Road	140	0.09
	1084	Liverpool Road	244	0.15
HOLLHR	10011	Holloway Road Station	315	0.20
	796	Camden Road	353	0.22
	314	Holloway Nags Head	186	0.12
	315	Seven Sisters Road / Nags Head	302	0.19
	1291	Hornsey Road	212	0.13
	1293	Durham Road	432	0.27
	34055	Fonthill Road	200	0.12
	BP4242	Finsbury Park Station	153	0.10
FNPKSPA	R0001	Finsbury Park Interchange	101	0.06
TOTAL ROUTE MILEAGE - BACK DIRECTION			8804	5.47
			metres	miles

7. Service Specification

Route: 153

Contract Reference: QC58703

This Service Specification forms section 7 of the ITT and should be read in conjunction with the ITT document, Version 1 dated 29 September 2011.

You are formally invited to tender for the provision of the bus service detailed below and in accordance with this Service Specification. Tenderers must ensure that a Compliant Tender is submitted and this will only be considered for evaluation if all parts of the Tender documents, as set out in section 11, have been received by the Corporation by the Date of Tender. The Tender must be fully completed in the required format, in accordance with the Instructions to Tenderers. A Compliant Tender must comply fully with the requirements of the Framework Agreement; adhere to the requirements of the Service Specification; and reflect the price of operating the Services with new vehicles.

Route Number	153
Terminus Points	Finsbury Park Station, Station Place and Liverpool Street Station
Contract Basis	Incentivised
Commencement Date	3 rd February 2018
Vehicle Type	60 capacity, dual door, single deck vehicles, minimum 10.8m long (see attached letter)
Current Maximum Approved Dimensions	10.8 metres long and 2.4 metres wide
New Vehicles Mandatory	Yes
Hybrid Price Required	No
Sponsored Route	No
Advertising Rights	Operator
Minimum Performance Standard	Average Excess Wait Time - No more than 1.20 minutes
Extension Threshold	Average Excess Wait Time Threshold - 1.10 minutes
Minimum Operated Mileage Standard	No less than 98%

The Date of Tender for this ITT is: No later than 12 Noon on Monday 20th February 2017.

Tenderers should refer to section 3 of Part A for the Service Specification Explanatory Notes and Appendix B of section 5 for the Example Service Specification of the ITT document.

SERVICE SPECIFICATION

- 1) SERVICE SPEC - ROUTE SPECIFICATION INFORMATION
- 2) NOTES
- 3) SCHEDULE REQUIREMENTS & PINCHPOINTS
- 4) OPERATIONAL CONSIDERATIONS
- 5) ROUTE RECORD, CURRENT PERFORMANCE, QSI BY TIME OF DAY, IBUS MILEAGE & QSI POINTS

2) NOTES

Proposed Changes:

At this time, the Corporation expects to implement a change to the existing service prior to the commencement of the new Route Agreement for Route No. 153.

- Ex Finsbury Park Station, Station Place, Route No. 153 is re-routed from Blomfield Street via London Wall and Old Broad Street to terminate at Liverpool Street Station, Bus Station.
- Ex Liverpool Street Station, Bus Station, Route No. 153 is re-routed from Liverpool Street Bus Station via Old Broad Street, London Wall and Moorgate to re-join current line of routeing.
- The section of routeing between Liverpool Street Station and Blomfield Street is withdrawn.
- **Please see Section 5 for a full list of streets traversed and standing arrangements.**

Tenderers should note that there are no changes proposed as part of this Service Specification for Route No. 153.

The Mayor and Transport for London (TfL) have developed a proposal for an Ultra Low Emission Zone (ULEZ) in Central London.

The ULEZ would take effect from 7th September 2020 and apply 24 hours a day, 7 days a week, and will require all single deck buses operating for TfL within the zone to be zero emission at tail pipe.

Operators should provide the following prices:

- 1. Annual diesel price - based on minimum 5 year contract.**
- 2. Annual electric price - based on a minimum 5 year contract. Tenderers should outline the strategy they would adopt for recharging these vehicles, together with any other operational and infrastructure assumptions, within the tender submission.**

Tenderers should detail the implementation strategy for electric buses. Operators must refer to the attached letter.

3) SCHEDULE REQUIREMENTS & PINCHPOINTS

3.1) MONDAY TO FRIDAY SCHEDULE REQUIREMENTS & PINCHPOINTS

Finsbury Park Station, Station Place to Liverpool Street Station			Liverpool Street Station to Finsbury Park Station, Station Place		
First departure no later than 0455.			First departure no later than 0505.		
0450 - 0555	Every 20 minutes		0500 - 0605	Every 20 minutes	
0556 - 0640	Every 15 minutes		0606 - 0650	Every 15 minutes	
0641 - 1905	Every 12 minutes		0651 - 1905	Every 12 minutes	
1906 - 2050	Every 15 minutes		1906 - 2050	Every 15 minutes	
2051 - 2355	Every 20 minutes		2051 - 0015	Every 20 minutes	
Last departure no earlier than 2350.			Last departure no earlier than 0010.		
Pinchpoints					
Barbican Station	0705 - 0905	12 minutes	Barnsbury Hemingford Arms	0710 - 0910	12 minutes
	1505 - 1640	12 minutes		1500 - 1635	12 minutes

3.2) SATURDAY AND GOOD FRIDAY SCHEDULE REQUIREMENTS & PINCHPOINTS

Finsbury Park Station, Station Place to Liverpool Street Station			Liverpool Street Station to Finsbury Park Station, Station Place		
First departure no later than 0455.			First departure no later than 0505.		
0450 - 0715	Every 20 minutes		0500 - 0705	Every 20 minutes	
0716 - 0830	Every 15 minutes		0706 - 0820	Every 15 minutes	
0831 - 1905	Every 12 minutes		0821 - 1905	Every 12 minutes	
1906 - 2050	Every 15 minutes		1906 - 2050	Every 15 minutes	
2051 - 2355	Every 20 minutes		2051 - 0015	Every 20 minutes	
Last departure no earlier than 2350.			Last departure no earlier than 0010.		
Pinchpoints					
Barbican Station	0900 - 1100	12 minutes	Barnsbury Hemingford Arms	0840 - 1105	12 minutes

3) SCHEDULE REQUIREMENTS & PINCHPOINTS - Continued

3.3) SUNDAY AND PUBLIC HOLIDAYS (EXCEPT GOOD FRIDAY AND CHRISTMAS DAY) SCHEDULE REQUIREMENTS & PINCHPOINTS

Finsbury Park Station, Station Place to Liverpool Street Station		Liverpool Street Station to Finsbury Park Station, Station Place			
First departure no later than 0640.		First departure no later than 0650.			
0635 - 0840	Every 20 minutes	0645 - 0810	Every 20 minutes		
0841 - 0910	Every 15 minutes	0811 - 0840	Every 15 minutes		
0911 - 1905	Every 12 minutes	0841 - 1905	Every 12 minutes		
1906 - 2050	Every 15 minutes	1906 - 2050	Every 15 minutes		
2051 - 2355	Every 20 minutes	2051 - 0015	Every 20 minutes		
Last departure no earlier than 2350.		Last departure no earlier than 0010.			
Pinchpoints					
Barbican Station	1035 - 1135	12 minutes	Barnsbury Hemingford Arms	1035 - 1135	12 minutes

Tenderers must identify the cost of the Boxing Day element of this service separately.

4) OPERATIONAL CONSIDERATIONS

- 4.1) Route No. 153 can suffer from unpredictable traffic delays in the Finsbury Park, Holloway, Islington, Moorgate and Liverpool Street areas.
- 4.2) Football matches at Arsenal F.C. can also cause traffic congestion in the Finsbury Park area.
- 4.3) Crossrail will connect the City, Canary Wharf, the West End and Heathrow Airport to commuter areas east and west of the capital. Major construction of the railway began in 2010, with the first services expected to commence through the central London tunnelled section in late 2018. The full Crossrail service will be operating from Heathrow and Reading to Abbey Wood and Shenfield in late 2019. The construction impacts of Crossrail could affect Route No. 153 and it is anticipated that some passenger demand for Route No. 153 may shift to this line when it opens. Route No. 153 will be reviewed after the opening date.

**5) ROUTE RECORD, CURRENT PERFORMANCE, QSI BY TIME OF DAY,
IBUS MILEAGE & QSI POINTS**

5.1) ROUTE RECORD
As per Busnet printout.

5.2) CURRENT PERFORMANCE
As per current print out.

5.3) QSI BY TIME OF DAY
As per current print out.

5.4) IBUS MILEAGE & QSI POINTS
As per current print out.

LONDON BUSES - ROUTE DESCRIPTION

ROUTE 153: Finsbury Park Station - Liverpool Street Station

Date of Structural Change: 3 February 2018.

Date of Service Change: 3 February 2018.

Reason for Issue: New Tender.

STREETS TRAVERSED

Towards Liverpool Street Station: Station Place, Stroud Green Road, Seven Sisters Road, Blackstock Road, Rock Street, St Thomas's Road, Seven Sisters Road, Isledon Road, Tollington Road, Holloway Road, Liverpool Road, Mackenzie Road, Westbourne Road, Offord Road, Hemingford Road, Copenhagen Street, Barnsbury Road, Tolpuddle Street, Liverpool Road, Islington High Street, St John Street, Clerkenwell Road, Goswell Road, Aldersgate Street, Beech Street, Chiswell Street, Finsbury Pavement, South Place, Eldon Street, Blomfield Street, London Wall, Old Broad Street, Sun Street Passage.

Towards Finsbury Park Station: Sun Street Passage, Old Broad Street, London Wall, Moorgate, Finsbury Pavement, Chiswell Street, Beech Street, Aldersgate Street, Goswell Road, Clerkenwell Road, St John Street, Islington High Street, Liverpool Road, Tolpuddle Street, Barnsbury Road, Copenhagen Street, Hemingford Road, Offord Road, Westbourne Road, Mackenzie Road, Palmer Place, Holloway Road, Parkhurst Road, Seven Sisters Road, Station Place.

AUTHORISED STANDS, CURTAILMENT POINTS, & BLIND DESCRIPTIONS

Please note that only stands, curtailment points, & blind descriptions as detailed in this contractual document may be used.

FINSBURY PARK STATION, STATION PLACE, EAST SIDE

Private offside stand for 3 buses in marked bays on east side of Station Place commencing outside Flats Nos. 1 and 3 and extending 37 metres south.

Buses proceed from Station Place direct to stand, departing to Station Place. Set down in Station Place, at Alighting Point (R0001 - Finsbury Park Interchange <> #, Last Stop on LOR: R0001 - Finsbury Park Interchange <> #) and pick up in Station Place, at Stop H (R0002 - Finsbury Park Interchange <> #, First Stop on LOR: R0002 - Finsbury Park Interchange <> #).

AVAILABILITY:	At any time.
OPERATING RESTRICTIONS:	No more than 2 buses on Route 153 should be scheduled to stand at any one time.
MEAL RELIEFS:	No meal relief vehicles to stand at any time.
FERRY VEHICLES:	No ferry vehicles to park on stand at any time.
BLIND DISPLAY:	Finsbury Park Station.

HOLLOWAY, CAMDEN ROAD (from LIVERPOOL STREET STATION)

Public stand for six buses on south side of Camden Road commencing 14 metres east of 29 Staveley Close extending 65 metres east.

Buses proceed from Holloway Road via Camden Road to stand, departing via Camden Road and Parkhurst Road to Holloway Road. Set down in Holloway Road, at stop T (796 - Camden Road, Last Stop on LOR: 796 - Camden Road) and pick up in Holloway Road, at stop S (797 - Tollington Road, First Stop on LOR: 797 - Tollington Road).

AVAILABILITY:	At any time.
OPERATING RESTRICTIONS:	Unscheduled curtailments only
MEAL RELIEFS:	No meal relief vehicles to stand at any time.
FERRY VEHICLES:	No ferry vehicles to park on stand at any time.
BLIND DISPLAY:	Holloway, Nags Head.

BARNSBURY, HEMINGFORD ARMS

From Finsbury Park Station.

Buses proceed from Westbourne Road via Offord Road, Caledonian Road, Wheelwright Street, Roman Way and Offord Road departing to Westbourne Road. Set down in Westbourne Road, at Stop V (37038 - Offord Road, Last Stop on LOR: 37038 - Offord Road) and pick up in Westbourne Road, at Stop W (37048 - Westbourne Road / Arundel Square, First Stop on LOR: 37048 - Westbourne Road / Arundel Square).

From Liverpool Street Station.

Buses proceed from Hemingford Road via Offord Road, Caledonian Road, Wheelwright Street, Roman Way and Offord Road departing to Hemingford Road. Set down in Hemingford Road, at Stop S (37047 - The Hemingford Arms, Last Stop on LOR: 37047 - The Hemingford Arms) and pick up in Hemingford Road, at Stop T (37053 - The Hemingford Arms, First Stop on LOR: 37053 - The Hemingford Arms).

AVAILABILITY: At any time.
OPERATING RESTRICTIONS: **Turning Point Only - Buses must not stand**
BLIND DISPLAY: Barnsbury, Offord Road.

ISLINGTON, ANGEL (from LIVERPOOL STREET STATION)

Buses proceed from Tolpuddle Street via Penton Street, Pentonville Road, Baron Street, White Lion Street and Penton Street departing to Tolpuddle Street. Set down in Tolpuddle Street, at Stop Z (37626 - Penton Street / Islington Police Station, Last Stop on LOR: 37626 - Penton Street / Islington Police Station) and pick up in Tolpuddle Street, at Stop Z (BP1392 - Liverpool Road / Chapel Market, First Stop on LOR: BP1392 - Liverpool Road / Chapel Market).

AVAILABILITY: At any time.
OPERATING RESTRICTIONS: **Turning Point Only - Buses must not stand**
BLIND DISPLAY: Islington Angel.

ISLINGTON, ANGEL (GOSWELL ROAD) (from Finsbury Park Station)

Public stand on north west side of Goswell Road in two portions:

1 - for three buses, commencing opposite the part wall of no.332 and extending 30 metres north west.

2 - for two buses, commencing opposite no.356 and extending 21 metres north west. Buses proceed from Tolpuddle Street via Liverpool Road, Islington High Street, City Road, Wakley Street and Goswell Road to stand, departing via Goswell Road, City Road, Islington High Street and Liverpool Road to Tolpuddle Street. Set down in Tolpuddle Street, at Stop W (BP1392 - Liverpool Road / Chapel Market, Last Stop on LOR: BP1392 - Liverpool Road / Chapel Market) and pick up in Tolpuddle Street, at Stop V (37040 - Chapel Market, First Stop on LOR: 37040 - Chapel Market).

AVAILABILITY:	At any time.
OPERATING RESTRICTIONS:	Unscheduled curtailments only.
MEAL RELIEFS:	No meal relief vehicles to stand at any time.
FERRY VEHICLES:	No ferry vehicles to park on stand at any time.
BLIND DISPLAY:	Islington Angel.

BARBICAN STATION (from Finsbury Park Station)

Buses proceed from Goswell Road via Aldersgate Street and Museum Of London Roundabout departing to Aldersgate Street. Set down in Goswell Road, at Stop BB (2286 - Barbican Station <>, Last Stop on LOR: 2286 - Barbican Station <>) and pick up in Aldersgate Street, from Stop BA (2287 - Barbican Station <>, First Stop on LOR: 2287 - Barbican Station <>).

AVAILABILITY:	At any time.
OPERATING RESTRICTIONS:	Turning Point Only - Buses must not stand
BLIND DISPLAY:	Barbican.

LIVERPOOL STREET BUS STATION

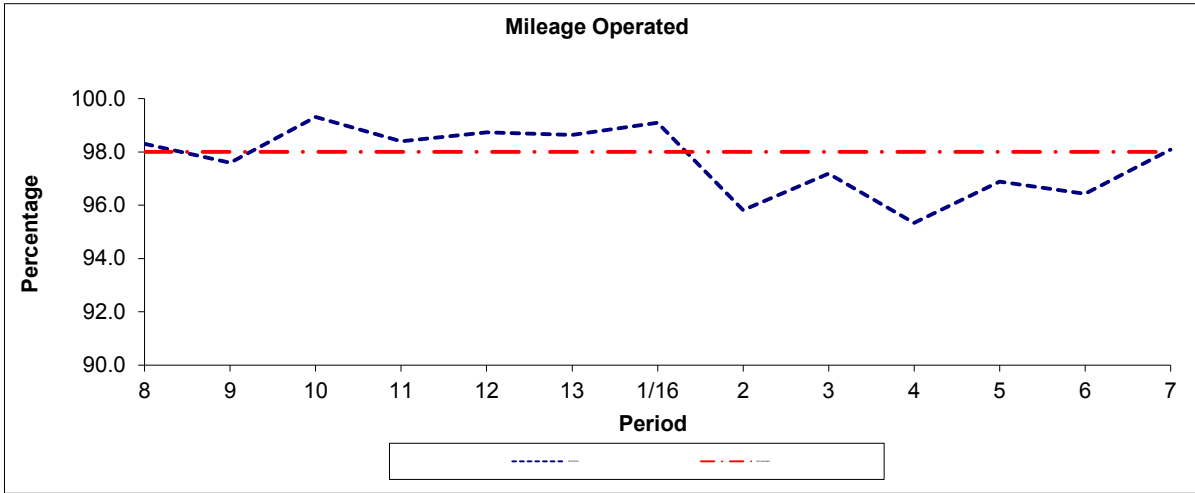
Private stand for 10 buses in Liverpool Street Bus Station in Sun Street Passage.
Five buses to stand in the enclosed section and five buses to stand in Sun Street Passage.
The 3 bus stand on the south side of Sun Street Passage must only be used by routes 11/N11.

Buses proceed from Sun Street Passage via Liverpool Street Bus Station to stand, departing via Liverpool Street Bus Station to Sun Street Passage. Set down in Sun Street Passage (OC509 - Liverpool Street Station, Last Stop on LOR: OC509 - Liverpool Street Station) and pick up in Sun Street Passage, at Stop B (R0814 - Liverpool Street Station ◊ #, First Stop on LOR: R0814 - Liverpool Street Station ◊ #).

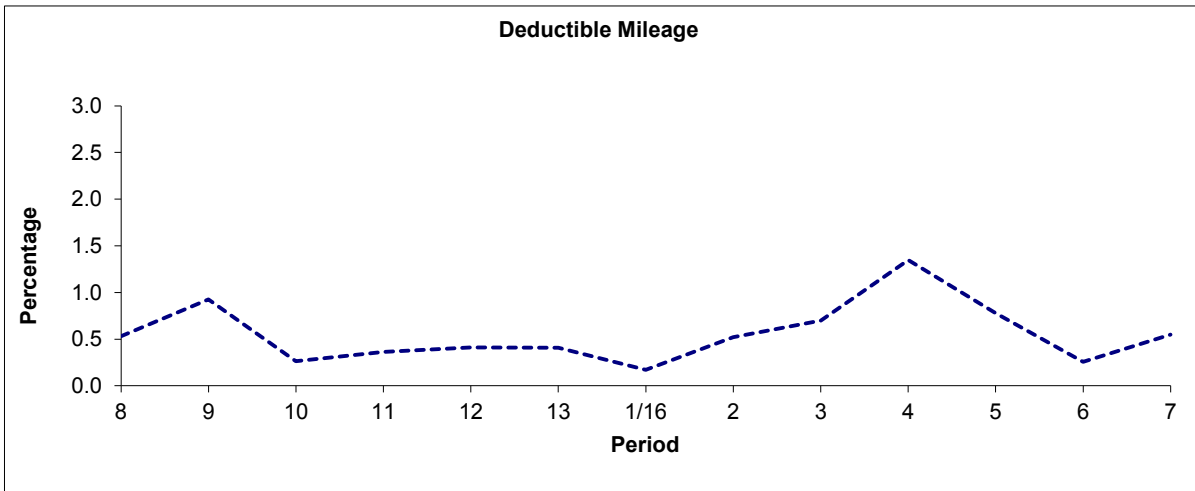
AVAILABILITY:	At any time.
OPERATING RESTRICTIONS:	No more than 1 bus on Route 153 should be scheduled to stand at any one time.
MEAL RELIEFS:	No meal relief vehicles to stand at any time.
FERRY VEHICLES:	No ferry vehicles to park on stand at any time.
BLIND DISPLAY:	Liverpool Street.
OTHER INFORMATION:	Stand is located on the left under the canopy.

PART B - PERFORMANCE STATISTICS

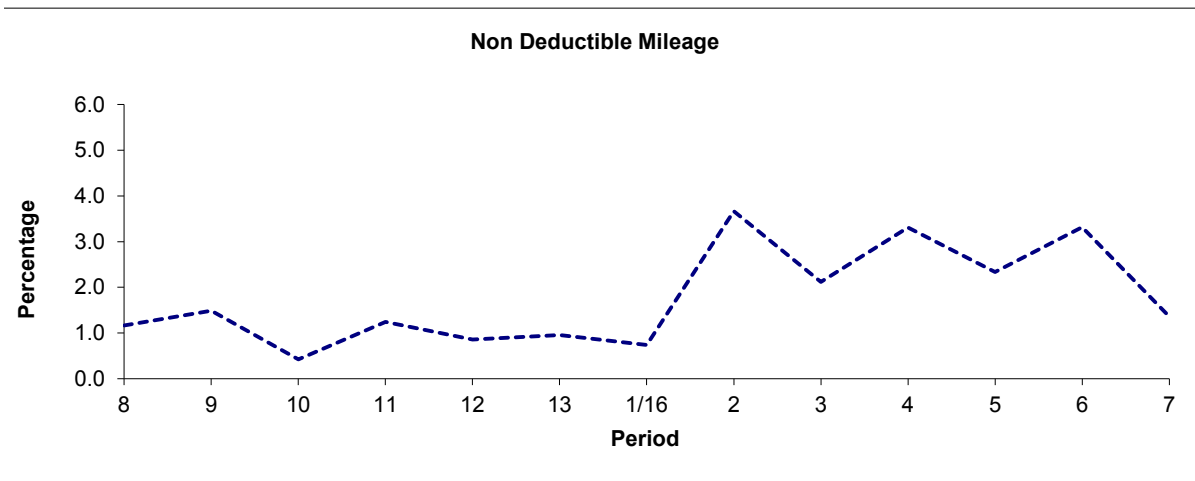
Route 153



Period	8	9	10	11	12	13	1/16	2	3	4	5	6	7
2015/2016	98.31	97.59	99.31	98.39	98.73	98.64	99.09	95.82	97.18	95.34	96.89	96.43	98.09
Min Standard	98.00	98.00	98.00	98.00	98.00	98.00	98.00	98.00	98.00	98.00	98.00	98.00	98.00



Period	8	9	10	11	12	13	1/16	2	3	4	5	6	7
2015/2016	0.53	0.93	0.26	0.36	0.41	0.41	0.17	0.52	0.70	1.35	0.78	0.26	0.55

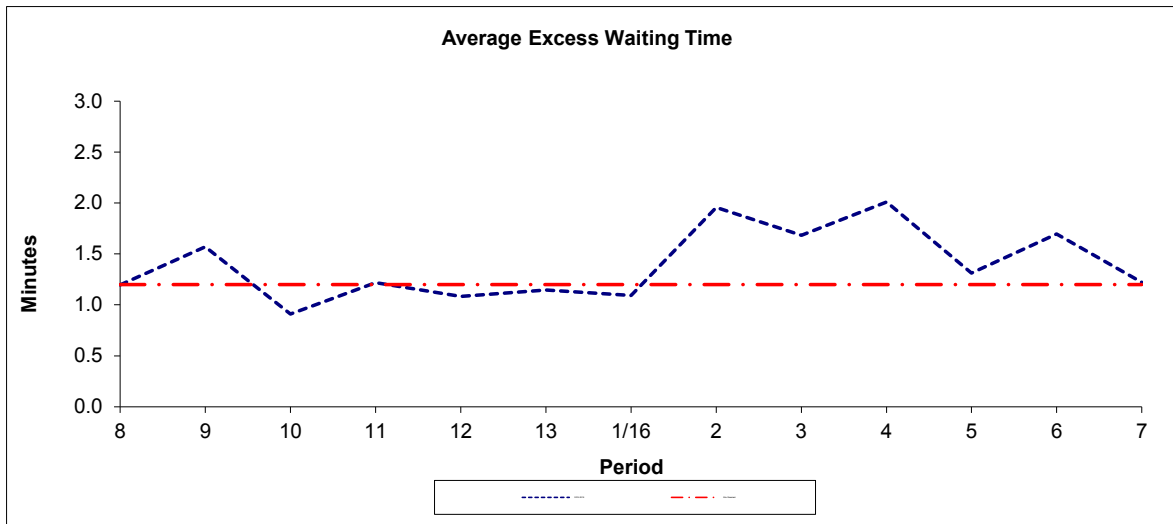


Period	8	9	10	11	12	13	1/16	2	3	4	5	6	7
2015/2016	1.16	1.48	0.42	1.24	0.86	0.95	0.74	3.66	2.12	3.31	2.33	3.32	1.36

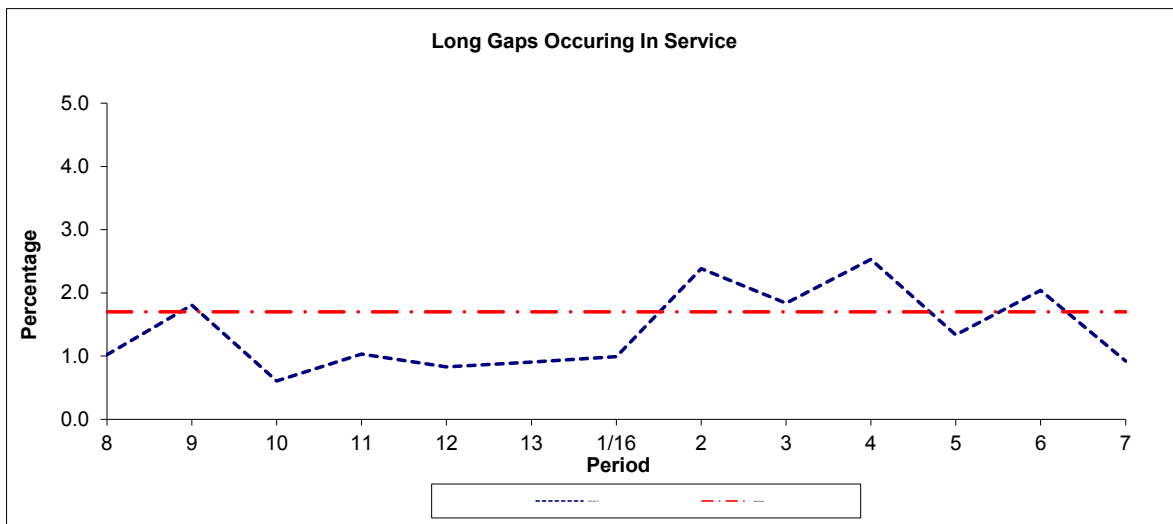
Note : Mileage is based on 4 weeks data

PART B - PERFORMANCE STATISTICS

Route 153



Period	8	9	10	11	12	13	1/16	2	3	4	5	6	7
2015-2016	1.20	1.57	0.91	1.22	1.08	1.15	1.09	1.96	1.68	2.01	1.31	1.70	1.22
Min Standard	1.20	1.20	1.20	1.20	1.20	1.20	1.20	1.20	1.20	1.20	1.20	1.20	1.20



Period	8	9	10	11	12	13	1/16	2	3	4	5	6	7
2015-2016	1.0	1.8	0.6	1.0	0.8	0.9	1.0	2.4	1.8	2.5	1.3	2.0	0.9
Benchmark	1.7	1.7	1.7	1.7	1.7	1.7	1.7	1.7	1.7	1.7	1.7	1.7	1.7

Note : Reliability is actual performance under full iBus (4 weeks data).
 Minimum Standards and Benchmarks are those applicable under the new contract.

ROUTE 153 - FULL iBUS RESULTS BY TIME OF DAY
QUARTER 3 15/16 TO QUARTER 2 16/17 (19/09/2015 - 16/09/2016)

MONDAY - FRIDAY

Time Range	Expected Buses	Observed Buses	Observed Buses (%)	SWT (mins)	EWT (mins)	AWT (mins)	Probability of Waiting < 10 mins (%)	Probability of Waiting 10-20 mins (%)	Probability of Waiting 20-30 mins (%)	Probability of Waiting > 30 mins (%)	Long Gaps (%)	Maximum Gap (mins)
05:00 - 07:00	15,449.	15,220.	98.5	8.70	0.79	9.48	61.7	34.2	3.8	0.3	0.1	49
07:00 - 10:00	37,999.	36,292.	95.5	5.92	1.14	7.07	73.9	23.5	2.3	0.4	1.2	63
10:00 - 13:00	37,295.	35,814.	96.0	5.95	1.72	7.67	70.2	25.6	3.6	0.6	2.0	66
13:00 - 16:00	37,499.	36,563.	97.5	5.85	1.62	7.47	71.3	25.0	3.4	0.4	1.8	53
16:00 - 19:00	37,096.	36,451.	98.3	6.00	1.54	7.53	71.4	25.1	3.1	0.4	1.5	53
19:00 - 22:00	29,737.	28,677.	96.4	7.33	1.47	8.80	60.7	31.3	6.5	1.5	1.6	70
22:00 - 24:00	14,520.	14,670.	101.0	10.00	1.21	11.21	49.8	38.5	9.6	2.1	0.4	69
Locations	209,595.	203,687.	97.2	6.35	1.45	7.80	69.3	26.4	3.7	0.6	1.5	70

SATURDAY

Time Range	Expected Buses	Observed Buses	Observed Buses (%)	SWT (mins)	EWT (mins)	AWT (mins)	Probability of Waiting < 10 mins (%)	Probability of Waiting 10-20 mins (%)	Probability of Waiting 20-30 mins (%)	Probability of Waiting > 30 mins (%)	Long Gaps (%)	Maximum Gap (mins)
05:00 - 07:00	2,749.	2,701.	98.3	10.00	0.36	10.36	50.7	41.9	7.2	0.2	0.0	44
07:00 - 10:00	6,515.	6,496.	99.7	6.99	0.70	7.69	71.3	26.7	2.0	0.1	0.3	67
10:00 - 13:00	7,446.	7,314.	98.2	6.04	0.73	6.78	76.0	22.9	1.0	0.1	0.4	40
13:00 - 16:00	7,500.	7,248.	96.6	6.00	1.38	7.38	71.8	24.8	3.0	0.4	1.4	48
16:00 - 19:00	7,520.	7,354.	97.8	5.94	1.59	7.53	71.6	24.5	3.2	0.7	2.0	75
19:00 - 22:00	5,800.	5,645.	97.3	7.43	1.66	9.09	59.5	30.8	7.5	2.2	2.2	62
22:00 - 24:00	2,835.	2,830.	99.8	10.00	1.65	11.65	49.1	37.6	10.7	2.6	0.5	64
Locations	40,365.	39,588.	98.1	6.64	1.24	7.88	69.0	26.5	3.7	0.7	1.2	75

SUNDAY AND BANK HOLIDAYS

Time Range	Expected Buses	Observed Buses	Observed Buses (%)	SWT (mins)	EWT (mins)	AWT (mins)	Probability of Waiting < 10 mins (%)	Probability of Waiting 10-20 mins (%)	Probability of Waiting 20-30 mins (%)	Probability of Waiting > 30 mins (%)	Long Gaps (%)	Maximum Gap (mins)
05:00 - 07:00	361.	390.	108.0	10.00	0.07	10.07	85.6	10.6	3.4	0.3	12.6	27
07:00 - 10:00	6,284.	6,128.	97.5	8.29	0.89	9.19	62.1	32.4	5.1	0.5	0.2	58
10:00 - 13:00	8,565.	8,390.	98.0	6.00	0.83	6.82	75.5	23.0	1.4	0.1	0.5	36
13:00 - 16:00	8,560.	8,210.	95.9	6.00	1.56	7.56	70.9	25.3	3.2	0.7	1.8	54
16:00 - 19:00	8,605.	8,371.	97.3	6.00	1.59	7.59	71.2	25.0	3.3	0.5	1.7	68
19:00 - 22:00	6,812.	6,806.	99.9	7.46	1.06	8.51	62.5	31.3	5.4	0.9	0.9	53
22:00 - 24:00	3,216.	3,218.	100.1	10.00	0.76	10.76	50.2	40.1	8.5	1.2	0.2	52
Locations	42,403.	41,513.	97.9	6.65	1.23	7.87	69.1	26.7	3.6	0.5	1.3	68

ALL DAYS

Time Range	Expected Buses	Observed Buses	Observed Buses (%)	SWT (mins)	EWT (mins)	AWT (mins)	Probability of Waiting < 10 mins (%)	Probability of Waiting 10-20 mins (%)	Probability of Waiting 20-30 mins (%)	Probability of Waiting > 30 mins (%)	Long Gaps (%)	Maximum Gap (mins)
05:00 - 07:00	18,559.	18,311.	98.7	8.83	0.74	9.57	61.8	33.8	4.1	0.3	0.7	49
07:00 - 10:00	50,798.	48,916.	96.3	6.13	1.10	7.22	73.0	24.2	2.4	0.3	1.1	67
10:00 - 13:00	53,306.	51,518.	96.6	5.97	1.46	7.43	71.7	24.9	2.9	0.4	1.6	66
13:00 - 16:00	53,559.	52,021.	97.1	5.89	1.58	7.47	71.3	25.0	3.3	0.4	1.7	54
16:00 - 19:00	53,221.	52,176.	98.0	5.99	1.55	7.54	71.4	25.0	3.2	0.4	1.5	75
19:00 - 22:00	42,349.	41,128.	97.1	7.36	1.45	8.81	60.8	31.2	6.5	1.6	1.6	70
22:00 - 24:00	20,571.	20,718.	100.7	10.00	1.23	11.23	49.8	38.5	9.6	2.1	0.4	69
Locations	292,363.	284,788.	97.4	6.42	1.40	7.82	69.2	26.5	3.7	0.6	1.4	75

Transport for London - QSI Points and Live Mileage List

v2.0 - Mileage directly imported from Caesar

Liverpool Street Bus Station via Blomfield Street

Route: 153

Service change: 35460

Date: 30/04/2016

Reason for Issue

Mileage update

Version Detail

OUT DIRECTION				
Timing Point Code	Stop Number	Stop Name	Metres	Miles
FNPKSPH	R0002	Finsbury Park Interchange		
	20583	Rock Street	230	0.14
	BP3912	Finsbury Park Station	158	0.10
	3513	Isledon Road	210	0.13
	33320	Berriman Road	348	0.22
	33321	Sobell Centre	226	0.14
	36800	Holloway Road /Camden Road	271	0.17
HOLLHR	797	Tollington Road	238	0.15
	10010	Holloway Road Station	496	0.31
	37036	Liverpool Road	252	0.16
	37051	Lough Road	224	0.14
	37035	Westbourne Road /Jupiter Way	234	0.15
	37052	Ellington Street /Arundel Square	247	0.15
	37038	Offord Road	234	0.15
	37053	The Hemingford Arms	280	0.17
BSBYHA	37054	Richmond Avenue	324	0.20
	37055	Copenhagen Street	324	0.20
	BP1391	Barnsbury Road	340	0.21
ISLNSY	BP1392	Liverpool Road /Chapel Market	360	0.22
	297	St John Street /Goswell Road	521	0.32
	12237	Friend Street /Sadler's Wells Theatre	242	0.15
	12236	Spencer Street /City University	235	0.15
	12232	Percival Street	262	0.16
CLERSJ	12230	St John Street /Clerkenwell Road	188	0.12
	13467	Goswell Road	263	0.16
	8394	Baltic Street West	209	0.13
BARBSN	2286	Barbican Station	160	0.10
	BP2826	Beech Street	309	0.19
	BP5536	Finsbury Street	423	0.26
	2462	Finsbury Square /Moorgate	123	0.08
	BP969	Eldon Street /Liverpool Street Station	314	0.20
	33891	All Hallows Church	289	0.18
LVSTBS	OC509	Liverpool Street Station	277	0.17
Total Route Mileage - Out Direction			8811	5.47
			Metres	Miles

BACK DIRECTION				
Timing Point Code	Stop Number	Stop Name	Metres	Miles
LVSTBS	R0814	Liverpool Street Station		
	1160	Moorgate Station	731	0.45
	BP5537	Finsbury Street	295	0.18
	BP5535	Silk Street	233	0.14
BARBSN	2287	Barbican Station	454	0.28
	8393	Clerkenwell Road /Old Street	277	0.17
CLERSJ	13466	Clerkenwell Road /St John Street	259	0.16
	33604	Aylesbury Street	210	0.13
	12233	Percival Street	193	0.12
	12235	Spencer Street /City University	248	0.15
	12238	Rosebery Avenue /Sadler's Wells Theatre	238	0.15
	1017	St John Street /Goswell Road	233	0.14
ISLNSY	37040	Chapel Market	457	0.28
	37626	Penton Street /Islington Police Station	204	0.13
	37627	Copenhagen Street	216	0.13
	37045	Hemingford Road	324	0.20
BSBYHA	37046	Richmond Avenue	236	0.15
	37047	The Hemingford Arms	386	0.24
	37048	Westbourne Road /Arundel Square	329	0.20
	BP2649	Ellington Street	163	0.10
	37049	Westbourne Road /Jupiter Way	266	0.17
	37037	Lough Road	188	0.12
	37050	Lowther Road	140	0.09
	1084	Liverpool Road	244	0.15
	10011	Holloway Road Station	315	0.20
HOLLHR	796	Camden Road	353	0.22
	314	Holloway /Nags Head	186	0.12
	315	Seven Sisters Road /Nags Head	302	0.19
	1291	Hornsey Road	212	0.13
	1293	Durham Road	432	0.27
	34055	Fonthill Road	200	0.12
	BP4242	Finsbury Park Station	153	0.10
FNPKSPA	R0001	Finsbury Park Interchange	101	0.06
Total Route Mileage - Back Direction			8778	5.45
			Metres	Miles