

## 7. Service Specification

Route: 87/N87

Contract Reference QC40803

This Service Specification forms section 7 of the ITT and should be read in conjunction with the ITT document, Version 1 dated 29 September 2011.

You are formally invited to tender for the provision of the bus service detailed below and in accordance with this Service Specification. Tenderers must ensure that a Compliant Tender is submitted and this will only be considered for evaluation if all parts of the Tender documents, as set out in section 11, have been received by the Corporation by the Date of Tender. The Tender must be fully completed in the required format, in accordance with the Instructions to Tenderers. A Compliant Tender must comply fully with the requirements of the Framework Agreement; adhere to the requirements of the Service Specification; and reflect the price of operating the Services with new vehicles.

<b>Terminus Points</b>	Route No. 87: Wandsworth, Wandsworth Plain to Aldwych Route No. N87: Kingston, Fairfield Bus Station to Aldwych
<b>Contract Basis</b>	Incentivised
<b>Commencement Date</b>	1 <sup>st</sup> June 2013
<b>Vehicle Type</b>	87 capacity, dual door, double deck buses
<b>Current Maximum Approved Dimensions</b>	10.1 metres long and 2.55 metres wide
<b>New Vehicles Mandatory</b>	Yes
<b>Hybrid Price Required</b>	Yes
<b>Sponsored Route</b>	No
<b>Minimum Performance Standard - Route No. 87</b>	Average Excess Wait Time - No more than 1.20 minutes
<b>Extension Threshold - Route No. 87</b>	Average Excess Wait Time Threshold - 1.05 minutes
<b>Advertising Rights</b>	Operator
<b>Minimum Operated Mileage Standard - Route No. 87</b>	No less than 98.00%
<b>Departing On Time - Route No. N87</b>	Departing on Time - No less than 85.00%
<b>Minimum Operated Mileage Standard - Route No. N87</b>	No less than 98.00%

The Date of Tender for this ITT is:  
No later than 12 Noon on 23<sup>rd</sup> April 2012

*Tenderers should refer to section 3 of Part A for the Service Specification Explanatory Notes and Appendix B of section 5 for the Example Service Specification of the ITT document.*

## **SERVICE SPECIFICATION**

- 1) SERVICE SPEC – ROUTE SPECIFICATION INFORMATION
- 2) NOTES
- 3) SCHEDULE REQUIREMENTS & PINCHPOINTS
- 4) OPERATIONAL CONSIDERATIONS
- 5) ROUTE RECORD, CURRENT PERFORMANCE, QSI BY TIME OF DAY,  
IBUS MILEAGE & QSI POINTS

## 2) NOTES

**Proposed Changes:**

At this time, no changes are proposed to the existing service for introduction prior to the commencement of the new Route Agreement for Route Nos. 87 & N87.

Tenderers should note that there are no changes proposed as part of this Service Specification for Route Nos. 87 & N87.

- **Tenderers must identify the cost of the Nightly element of this service separately.**

### 3) SCHEDULE REQUIREMENTS & PINCHPOINTS

#### 3.1) MONDAY TO FRIDAY SCHEDULE REQUIREMENTS & PINCHPOINTS

Wandsworth, Wandsworth Plain to Aldwych, West Arm		Aldwych, St Marys Church to Wandsworth, Wandsworth Plain			
First departure no later than 0540.		First departure no later than 0505.			
0535 - 0555	Every 15 minutes	0500 - 0630	Every 15 minutes		
0556 - 0625	Every 10 minutes	0631 - 0700	Every 10 minutes		
0626 - 0700	Every 7 - 8 minutes (8 buses per hour)	0701 - 0725	Every 7 - 8 minutes (8 buses per hour)		
0701 - 1825	Every 6 minutes	0726 - 1900	Every 6 minutes		
1826 - 1855	Every 7 - 8 minutes (8 buses per hour)	1901 - 1930	Every 7 - 8 minutes (8 buses per hour)		
1856 - 1945	Every 10 minutes	1931 - 2010	Every 10 minutes		
1946 - 0015	Every 12 minutes	2011 - 0015	Every 12 minutes		
Last departure no earlier than 0010.		Last departure no earlier than 0010.			
<b>Pinchpoints</b>					
Millbank, Thames House	0730 - 0900	6 minutes	Clapham Junction Station, St Johns Hill	0805 - 0905	6 minutes
	1530 - 1700	6 minutes		1515 - 1645	6 minutes

#### 3.2) SATURDAY AND GOOD FRIDAY SCHEDULE REQUIREMENTS & PINCHPOINTS

Wandsworth, Wandsworth Plain to Aldwych, West Arm		Aldwych, St Marys Church to Wandsworth, Wandsworth Plain			
First departure no later than 0540.		First departure no later than 0505.			
0535 - 0655	Every 15 minutes	0500 - 0735	Every 15 minutes		
0656 - 0755	Every 12 minutes	0736 - 0810	Every 12 minutes		
0756 - 0815	Every 10 minutes	0811 - 0830	Every 10 minutes		
0816 - 0855	Every 7 - 8 minutes (8 buses per hour)	0831 - 0920	Every 7 - 8 minutes (8 buses per hour)		
0856 - 1725	Every 6 minutes	0921 - 1800	Every 6 minutes		
1726 - 1755	Every 7 - 8 minutes (8 buses per hour)	1801 - 1840	Every 7 - 8 minutes (8 buses per hour)		
1756 - 1855	Every 10 minutes	1841 - 1950	Every 10 minutes		
1856 - 0015	Every 12 minutes	1951 - 0015	Every 12 minutes		
Last departure no earlier than 0010.		Last departure no earlier than 0010.			
<b>Pinchpoints</b>					
Millbank, Thames House	0930 - 1100	6 minutes	Clapham Junction Station, St Johns Hill	0930 - 1100	6 minutes

### 3.3) SUNDAY AND PUBLIC HOLIDAY SCHEDULE REQUIREMENTS & PINCHPOINTS

Wandsworth, Wandsworth Plain to Aldwych, West Arm		Aldwych, St Marys Church to Wandsworth, Wandsworth Plain	
First departure no later than 0540.		First departure no later than 0505.	
0535 - 0855	Every 15 minutes	0500 - 0935	Every 15 minutes
0856 - 0015	Every 12 minutes	0936 - 0015	Every 12 minutes
Last departure no earlier than 0010.		Last departure no earlier than 0010.	
<b>Pinchpoints</b>			
Millbank, Thames House	1030 - 1130	12 minutes	Clapham Junction Station, St Johns Hill
			1100 - 1200
			12 minutes

### 3.4) BOXING DAY SCHEDULE REQUIREMENTS & PINCHPOINTS

Wandsworth, Wandsworth Plain to Aldwych, West Arm		Aldwych, St Marys Church to Wandsworth, Wandsworth Plain	
First departure no later than 0755.		First departure no later than 0805.	
0750 - 0855	Every 15 minutes	0800 - 0935	Every 15 minutes
0856 - 0015	Every 12 minutes	0936 - 0015	Every 12 minutes
Last departure no earlier than 0010.		Last departure no earlier than 0010.	
<b>Pinchpoints</b>			
Millbank, Thames House	1030 - 1130	12 minutes	Clapham Junction Station, St Johns Hill
			1100 - 1200
			12 minutes

### 3.5) SUNDAY NIGHTS/MONDAY MORNINGS TO THURSDAY NIGHTS/FRIDAY MORNINGS

Kingston, Fairfield Bus Station to Aldwych, West Arm		Aldwych, St Marys Church to Kingston, Fairfield Bus Station	
First departure no later than 2350.		First departure no later than 0025.	
2345 - 0500	Every 15 minutes	0020 - 0500	Every 15 minutes
Last departure no earlier than 0455.		Last departure no earlier than 0455.	

**Tenderers must identify the cost of the Nightly element of this service separately.**

### 3.6) FRIDAY NIGHTS/SATURDAYS MORNINGS TO SATURDAYS NIGHTS/SUNDAYS MORNINGS

Kingston, Fairfield Bus Station to Aldwych, West Arm		Aldwych, St Marys Church to Kingston, Fairfield Bus Station	
First departure no later than 2350.		First departure no later than 0015.	
2345 - 0500	Every 10 minutes	0010 - 0500	Every 10 minutes
Last departure no earlier than 0455.		Last departure no earlier than 0455.	

**Tenderers must identify the cost of the Nightly element of this service separately.**

#### **4) OPERATIONAL CONSIDERATIONS**

- 4.1) Route No. 87 should interwork with from Route No. 77 between Wandsworth Road Station and Vauxhall Station on Sunday daytimes and all evenings.
- 4.2) Route No. 87 should interwork with Route No. N87 to form a seamless 24 hour service between Wandsworth, Wandsworth Plain and Aldwych.
- 4.3) When compiling schedules Tenderers are asked to consider passengers making connections to other services at the following locations:  
Wandsworth Road Station, Vauxhall Station.
- 4.4) Route Nos. 87 & N87 can suffer unpredictable traffic delays in the Wandsworth, Clapham Junction and Vauxhall areas.

#### **5) ROUTE RECORD, CURRENT PERFORMANCE, QSI BY TIME OF DAY, IBUS MILEAGE & QSI POINTS**

- 5.1) ROUTE RECORD  
As per Busnet Printout.
- 5.2) CURRENT PERFORMANCE  
As per current print out.
- 5.3) QSI BY TIME OF DAY  
As per current print out
- 5.4) IBUS MILEAGE & QSI POINTS  
As per current print out.

# LONDON BUSES - ROUTE DESCRIPTION

## ROUTE 87: Wandsworth, Wandsworth Plain - Aldwych

**Date of Structural Change:** 1 June 2013.

**Date of Service Change:** 1 June 2013.

**Reason for Issue:** New contract, not yet awarded.

### **STREETS TRAVERSED**

**Towards Aldwych:** Wandsworth Plain, Armoury Way, Fairfield Street, East Hill, St John's Hill, Lavender Hill, Wandsworth Road, Vauxhall Bus Station, Bridgefoot, Vauxhall Bridge, Millbank, Millbank Roundabout, Millbank, Abingdon Street, Old Palace Yard, St Margaret Street, Parliament Square, Parliament Street, Whitehall, Charing Cross, Trafalgar Square (South Side), Strand, Aldwych.

**Towards Wandsworth, Wandsworth Plain:** Strand, Charing Cross, Whitehall, Parliament Street, Parliament Square, St Margaret Street, Old Palace Yard, Abingdon Street, Millbank, Millbank Roundabout, Millbank, Vauxhall Bridge, Bridgefoot, Vauxhall Bus Station, Parry Street, Wandsworth Road, Lavender Hill, St John's Hill, Marcilly Road, North Side Wandsworth Common, Huguenot Place, East Hill, Wandsworth High Street, Wandsworth Plain.

## **AUTHORISED STANDS, CURTAILMENT POINTS, & BLIND DESCRIPTIONS**

Please note that only stands, curtailment points, & blind descriptions as detailed in this contractual document may be used.

### **WANDSWORTH, WANDSWORTH PLAIN**

Public stand for two buses on west side of Wandsworth Plain, commencing 7 metres south of lamp standard 2 extending 25 metres south.

Buses proceed from Wandsworth Plain direct to stand, departing to Wandsworth Plain.

Set down in Wandsworth Plain, at Stop F (33434 - Wandsworth Plain, Last Stop on LOR: 33434 - Wandsworth Plain) and pick up in Wandsworth Plain, at Stop G (33274 - Wandsworth Plain, First Stop on LOR: 33274 - Wandsworth Plain).

AVAILABILITY:	At any time.
OPERATING RESTRICTIONS:	No more than 1 bus on Route 87 should be scheduled to stand at any one time.
MEAL RELIEFS:	No meal relief vehicles to stand at any time.
FERRY VEHICLES:	No ferry vehicles to park on stand at any time.
BLIND DISPLAY:	Wandsworth.
OTHER INFORMATION:	Toilets available (24 hours).

### **CLAPHAM JUNCTION, ST JOHNS HILL (from ALDWYCH)**

Private stand for three buses on forecourt of railway stores office on north side of St John's Hill.

Buses proceed from St John's Hill via Bus Lay-By to stand, departing via Bus Lay-By to St John's Hill. Set down in St John's Hill, at Stop M (25566 - Clapham Junction Station #, Last Stop on LOR: 25566 - Clapham Junction Station #) and pick up in St John's Hill, at Stop D (429 - Clapham Junction Station #, First Stop on LOR: 429 - Clapham Junction Station #).

AVAILABILITY:	At any time.
OPERATING RESTRICTIONS:	Unscheduled curtailments only.
MEAL RELIEFS:	No meal relief vehicles to stand at any time.
FERRY VEHICLES:	No ferry vehicles to park on stand at any time.
BLIND DISPLAY:	Clapham Junction.



## **VAUXHALL BUS STATION**

Private offside stand for 6 buses in three sections (24, 37 and 12 metres) in Bondway commencing 1.5 metres north of lamp standard No. 7 and extending overall 106 metres south.

### From Aldwych.

Buses proceed from Vauxhall Bus Station direct to stand, departing to Vauxhall Bus Station. Set down in Vauxhall Bus Station, at Stop G (BP4322 - Vauxhall Bus Station, Last Stop on LOR: BP4322 - Vauxhall Bus Station) and pick up in Vauxhall Bus Station, at Stop B (BP4317 - Vauxhall Bus Station, First Stop on LOR: BP4317 - Vauxhall Bus Station).

### From Wandsworth, Wandsworth Plain.

Buses proceed from Vauxhall Bus Station direct to stand, departing to Vauxhall Bus Station. Set down in Vauxhall Bus Station, at Stop H (BP4323 - Vauxhall Bus Station, Last Stop on LOR: 2322 - Covent Garden Market East Side) and pick up in Vauxhall Bus Station, at Stop G (BP4322 - Vauxhall Bus Station, First Stop on LOR: BP4322 - Vauxhall Bus Station).

AVAILABILITY:	At any time.
OPERATING RESTRICTIONS:	Unscheduled curtailments only.
MEAL RELIEFS:	No meal relief vehicles to stand at any time.
FERRY VEHICLES:	No ferry vehicles to park on stand at any time.
BLIND DISPLAY:	Vauxhall.

## **MILLBANK, LAMBETH BRIDGE (from Wandsworth, Wandsworth Plain)**

Buses proceed from Millbank via Millbank Roundabout departing to Millbank. Set down in Millbank, at Stop ND (3359 - Lambeth Bridge, Last Stop on LOR: 3359 - Lambeth Bridge) and pick up in Millbank, at Stop NC (3360 - Lambeth Bridge, First Stop on LOR: 3360 - Lambeth Bridge).

AVAILABILITY:	At any time.
OPERATING RESTRICTIONS:	<b>Turning Point Only - Buses must not stand</b>
BLIND DISPLAY:	Lambeth Bridge.

## **PARLIAMENT SQUARE (from Wandsworth, Wandsworth Plain)**

Buses proceed from Abingdon Street via Old Palace Yard, St Margaret Street, Parliament Square, St Margaret Street and Old Palace Yard departing to Abingdon Street. Set down in Abingdon Street, at Stop D (BP245 - Abingdon Street, Last Stop on LOR: BP245 - Abingdon Street) and pick up in Abingdon Street, at Stop E (BP246 - Abingdon Street, First Stop on LOR: BP246 - Abingdon Street).

AVAILABILITY:	At any time.
OPERATING RESTRICTIONS:	<b>Turning Point Only - Buses must not stand</b>
BLIND DISPLAY:	Parliament Square.

## **TRAFALGAR SQUARE (from Wandsworth, Wandsworth Plain)**

Buses proceed from Whitehall via Charing Cross, Trafalgar Square (South Side) and Charing Cross departing to Whitehall. Set down in Whitehall (7867 - Horse Guards Parade, Last Stop on LOR: 7867 - Horse Guards Parade) and pick up in Whitehall, at Stop N (152 - Whitehall / Trafalgar Square, First Stop on LOR: 152 - Whitehall / Trafalgar Square).

AVAILABILITY: At any time.  
OPERATING RESTRICTIONS: **Turning Point Only - Buses must not stand**  
BLIND DISPLAY: Whitehall, Horse Guards.

## **ALDWYCH, EAST ARM**

Public offside stand for 6 buses on south side of Aldwych (east arm) commencing 10 metres west of Melbourne Place and extending 67 metres west. Overflow public stand for 3 buses on south side of Strand commencing 10 metres east of Surrey Street and extending 36 metres east.

Buses proceed from Aldwych direct to stand, departing via Aldwych to Strand. Set down in Aldwych, at Stop E (20983 - Aldwych / Drury Lane, Last Stop on LOR: 20983 - Aldwych / Drury Lane) and pick up in Strand, at Stop R (34323 - Aldwych / Somerset House, First Stop on LOR: 34323 - Aldwych / Somerset House).

AVAILABILITY: At any time.  
OPERATING RESTRICTIONS: No more than 2 buses on Route 87 should be scheduled to stand at any one time.  
MEAL RELIEFS: No meal relief vehicles to stand at any time.  
FERRY VEHICLES: No ferry vehicles to park on stand at any time.  
BLIND DISPLAY: Aldwych.  
OTHER INFORMATION: Toilet facilities available (24 hours).

# LONDON BUSES - ROUTE DESCRIPTION

## ROUTE N87: Kingston, Fairfield Bus Station - Aldwych

**Date of Structural Change:** 1 June 2013.

**Date of Service Change:** 1 June 2013.

**Reason for Issue:** New contract, not yet awarded.

### STREETS TRAVERSED

**Towards Aldwych:** Fairfield North, Wheatfield Way, Ashdown Road, Eden Street, Clarence Street, Cromwell Road, Queen Elizabeth Road, London Road, Cambridge Road, Kingston Road, Burlington Road, Shannon Corner, Burlington Road, West Barnes Lane, Coombe Lane, Lambton Road, Worple Road, Wimbledon Hill Road, Wimbledon Bridge, The Broadway, Gladstone Road, Bus Turning Area, Sir Cyril Black Way, Hartfield Road, Wimbledon Bridge, Alexandra Road, Gap Road, Durnsford Road, Merton Road, Buckhold Road, Wandsworth High Street, Wandsworth Plain, Armoury Way, Fairfield Street, East Hill, St John's Hill, Lavender Hill, Wandsworth Road, Vauxhall Bus Station, Bridgefoot, Vauxhall Bridge, Millbank, Millbank Roundabout, Millbank, Abingdon Street, Old Palace Yard, St Margaret Street, Parliament Square, Parliament Street, Whitehall, Charing Cross, Trafalgar Square (South Side), Strand, Aldwych.

**Towards Kingston, Fairfield Bus Station:** Strand, Charing Cross, Whitehall, Parliament Street, Parliament Square, St Margaret Street, Old Palace Yard, Abingdon Street, Millbank, Millbank Roundabout, Millbank, Vauxhall Bridge, Bridgefoot, Vauxhall Bus Station, Parry Street, Wandsworth Road, Lavender Hill, St John's Hill, Marcilly Road, North Side Wandsworth Common, Huguenot Place, East Hill, Wandsworth High Street, Buckhold Road, Merton Road, Durnsford Road, Gap Road, Alexandra Road, Wimbledon Bridge, The Broadway, Gladstone Road, Bus Turning Area, Sir Cyril Black Way, Hartfield Road, Wimbledon Bridge, Wimbledon Hill Road, Worple Road, Pepys Road, Coombe Lane, West Barnes Lane, Burlington Road, Shannon Corner, Burlington Road, Kingston Road, Cambridge Road, London Road, Fairfield North.

## **AUTHORISED STANDS, CURTAILMENT POINTS, & BLIND DESCRIPTIONS**

Please note that only stands, curtailment points, & blind descriptions as detailed in this contractual document may be used.

### **KINGSTON, FAIRFIELD BUS STATION**

Private stand for seven buses in marked bays in Fairfield Bus Station on south side of Fairfield North.

Buses proceed from Fairfield North via Fairfield Bus Station to stand, departing via Fairfield Bus Station to Fairfield North. Set down in Fairfield North, at Alighting Point (BP386 - Fairfield Bus Station, Last Stop on LOR: BP386 - Fairfield Bus Station) and pick up in Fairfield North, at Stop d (R0705 - Fairfield Bus Station, First Stop on LOR: R0705 - Fairfield Bus Station).

AVAILABILITY:	At any time.
OPERATING RESTRICTIONS:	No more than 2 buses on Route N87 should be scheduled to stand at any one time.
MEAL RELIEFS:	No meal relief vehicles to stand at any time.
FERRY VEHICLES:	No ferry vehicles to park on stand at any time.
BLIND DISPLAY:	Kingston.
OTHER INFORMATION:	Toilet facilities available (24 hours).

### **NEW MALDEN, FOUNTAIN ROUNDABOUT (from ALDWYCH)**

Buses proceed from Burlington Road via Fountain Roundabout departing to Burlington Road. Set down in Burlington Road, at stop G (27383 - Walton Avenue, Last Stop on LOR: 27383 - Walton Avenue) and pick up in Burlington Road, at stop F (34031 - Walton Avenue, First Stop on LOR: 34031 - Walton Avenue).

AVAILABILITY:	At any time.
OPERATING RESTRICTIONS:	<b>Turning Point Only - Buses must not stand</b>
BLIND DISPLAY:	New Malden, Fountain Roundabout.

### **RAYNES PARK, RAYNES PARK HOTEL (from ALDWYCH)**

Public stand for two buses on west side of Lambton Road.

Buses proceed from Worple Road via Pepys Road, Coombe Lane and Lambton Road to stand, departing via Lambton Road to Worple Road. Set down in Worple Road, at Stop G (27399 - Pepys Road, Last Stop on LOR: 27399 - Pepys Road) and pick up in Worple Road, at Stop D (27398 - Raynes Park Methodist Church, First Stop on LOR: 27398 - Raynes Park Methodist Church).

AVAILABILITY:	At any time.
OPERATING RESTRICTIONS:	Unscheduled curtailments only.
MEAL RELIEFS:	No meal relief vehicles to stand at any time.
FERRY VEHICLES:	No ferry vehicles to park on stand at any time.
BLIND DISPLAY:	Raynes Park.

## **WIMBLEDON, SIR CYRIL BLACK WAY (from ALDWYCH)**

Private stand for up to 3 buses in bus turning area on north side of Sir Cyril Black Way. Buses proceed from The Broadway via Gladstone Road and Bus Turning Area to stand, departing to Bus Turning Area. Set down in The Broadway, at Stop D (BP106 - Wimbledon Station # <> >t<, Last Stop on LOR: BP106 - Wimbledon Station # <> >t<) and pick up in Bus Turning Area, at Stop E (LG66 - Wimbledon Bus Station, First Stop on LOR: LG66 - Wimbledon Bus Station).

AVAILABILITY: At any time.  
OPERATING RESTRICTIONS: Unscheduled curtailments only.  
MEAL RELIEFS: No meal relief vehicles to stand at any time.  
FERRY VEHICLES: No ferry vehicles to park on stand at any time.  
BLIND DISPLAY: Wimbledon.

## **WANDSWORTH, WANDSWORTH PLAIN**

Public stand for two buses on west side of Wandsworth Plain, commencing 7 metres south of lamp standard 2 extending 25 metres south.

### From Aldwych.

Buses proceed from Wandsworth High Street via Wandsworth Plain to stand, departing to Wandsworth Plain. Set down in Wandsworth High Street, at Stop U (34069 - Wandsworth / Southside, Last Stop on LOR: 34069 - Wandsworth / Southside) and pick up in Wandsworth Plain, at Stop G (33274 - Wandsworth Plain, First Stop on LOR: 33274 - Wandsworth Plain).

### From Kingston, Fairfield Bus Station.

Buses proceed from Wandsworth Plain direct to stand, departing via Wandsworth Plain, Armoury Way and Ram Street to Wandsworth High Street. Set down in Wandsworth Plain, at Alighting Point F (33434 - Wandsworth Plain, Last Stop on LOR: 33274 - Wandsworth Plain) and pick up in Wandsworth High Street, at Stop U (34069 - Wandsworth / Southside, First Stop on LOR: 34069 - Wandsworth / Southside).

AVAILABILITY: At any time.  
OPERATING RESTRICTIONS: Unscheduled curtailments only.  
MEAL RELIEFS: No meal relief vehicles to stand at any time.  
FERRY VEHICLES: No ferry vehicles to park on stand at any time.  
BLIND DISPLAY: Wandsworth.

### **CLAPHAM JUNCTION, ST JOHNS HILL (from ALDWYCH)**

Private stand for three buses on forecourt of railway stores office on north side of St John's Hill.

Buses proceed from St John's Hill via Bus Lay-By to stand, departing via Bus Lay-By to St John's Hill. Set down in St John's Hill, at Stop M (25566 - Clapham Junction Station #, Last Stop on LOR: 25566 - Clapham Junction Station #) and pick up in St John's Hill, at Stop D (429 - Clapham Junction Station #, First Stop on LOR: 429 - Clapham Junction Station #).

AVAILABILITY:	At any time.
OPERATING RESTRICTIONS:	Unscheduled curtailments only.
MEAL RELIEFS:	No meal relief vehicles to stand at any time.
FERRY VEHICLES:	No ferry vehicles to park on stand at any time.
BLIND DISPLAY:	Clapham Junction.

### **CLAPHAM JUNCTION STATION, GRANT ROAD (from Kingston, Fairfield Bus Station)**

Private stand for eight buses in 2 portions in slip road off Falcon Road (west side) south of Grant Road:

1 - for three buses in slip road;

2 - for five buses standing abreast in bus parking area between slip road and Grant Road.

Buses proceed from St John's Hill via Falcon Road and Slip Road to stand, departing via Slip Road, Grant Road and Falcon Road to St John's Hill. Set down in St John's Hill, at Stop D (429 - Clapham Junction Station #, Last Stop on LOR: 429 - Clapham Junction Station #) and pick up in St John's Hill, at Stop M (25566 - Clapham Junction Station #, First Stop on LOR: 25566 - Clapham Junction Station #).

AVAILABILITY:	At any time.
OPERATING RESTRICTIONS:	Unscheduled curtailments only
MEAL RELIEFS:	No meal relief vehicles to stand at any time.
FERRY VEHICLES:	No ferry vehicles to park on stand at any time.
BLIND DISPLAY:	Clapham Junction.

### **VAUXHALL BUS STATION (from Kingston, Fairfield Bus Station)**

Private offside stand for 6 buses in three sections (24, 37 and 12 metres) in Bondway commencing 1.5 metres north of lamp standard No. 7 and extending overall 106 metres south.

Buses proceed from Vauxhall Bus Station direct to stand, departing to Vauxhall Bus Station. Set down in Vauxhall Bus Station, at Stop J (BP4324 - Vauxhall Bus Station, Last Stop on LOR: 2322 - Covent Garden Market East Side) and pick up in Vauxhall Bus Station, at Stop G (BP4322 - Vauxhall Bus Station, First Stop on LOR: BP4322 - Vauxhall Bus Station).

AVAILABILITY: At any time.  
OPERATING RESTRICTIONS: Unscheduled curtailments only.  
MEAL RELIEFS: No meal relief vehicles to stand at any time.  
FERRY VEHICLES: No ferry vehicles to park on stand at any time.  
BLIND DISPLAY: Vauxhall.

### **TRAFALGAR SQUARE, WHITEHALL PLACE (from Kingston, Fairfield Bus Station)**

Public stand for two buses facing east on south side of Whitehall Place, 35 metres west of Whitehall Court, extending 27 metres west.

Buses proceed from Whitehall via Whitehall Place to stand, departing via Whitehall Place, Northumberland Avenue and Charing Cross to Whitehall. Set down in Whitehall, at Alighting Point (7867 - Horse Guards Parade, Last Stop on LOR: 7867 - Horse Guards Parade) and pick up in Whitehall, at Stop N (152 - Whitehall / Trafalgar Square, First Stop on LOR: 152 - Whitehall / Trafalgar Square).

AVAILABILITY: At any time.  
OPERATING RESTRICTIONS: Unscheduled curtailments only.  
MEAL RELIEFS: No meal relief vehicles to stand at any time.  
FERRY VEHICLES: No ferry vehicles to park on stand at any time.  
BLIND DISPLAY: Whitehall, Horse Guards.

## **ALDWYCH, EAST ARM**

Public offside stand for 6 buses on south side of Aldwych (east arm) commencing 10 metres west of Melbourne Place and extending 67 metres west. Overflow public stand for 3 buses on south side of Strand commencing 10 metres east of Surrey Street and extending 36 metres east.

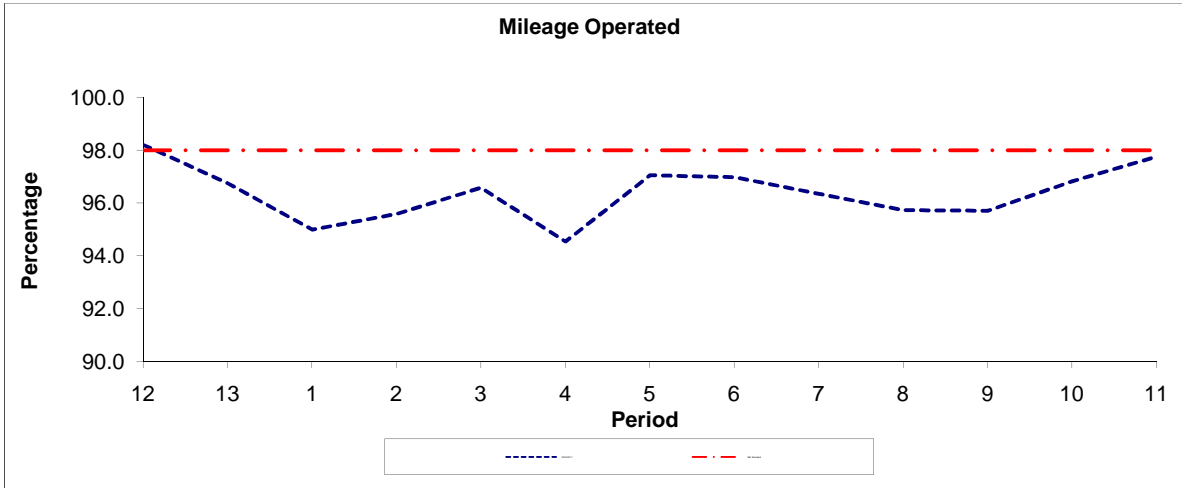
Buses proceed from Aldwych direct to stand, departing via Aldwych to Strand. Set down in Aldwych, at Stop E (20983 - Aldwych / Drury Lane, Last Stop on LOR: 20983 - Aldwych / Drury Lane) and pick up in Strand, at Stop R (34323 - Aldwych / Somerset House, First Stop on LOR: 34323 - Aldwych / Somerset House).

AVAILABILITY:	At any time.
OPERATING RESTRICTIONS:	No more than 1 bus on Route N87 should be scheduled to stand at any one time.
MEAL RELIEFS:	No meal relief vehicles to stand at any time.
FERRY VEHICLES:	No ferry vehicles to park on stand at any time.
BLIND DISPLAY:	Aldwych.
OTHER INFORMATION:	Toilet facilities available (24 hour).

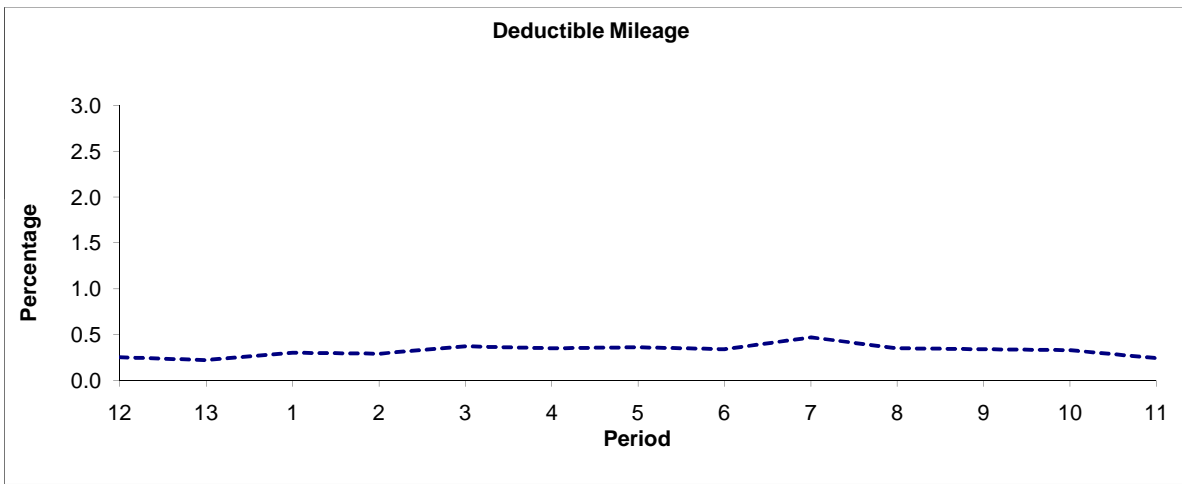


**PART B - PERFORMANCE STATISTICS**

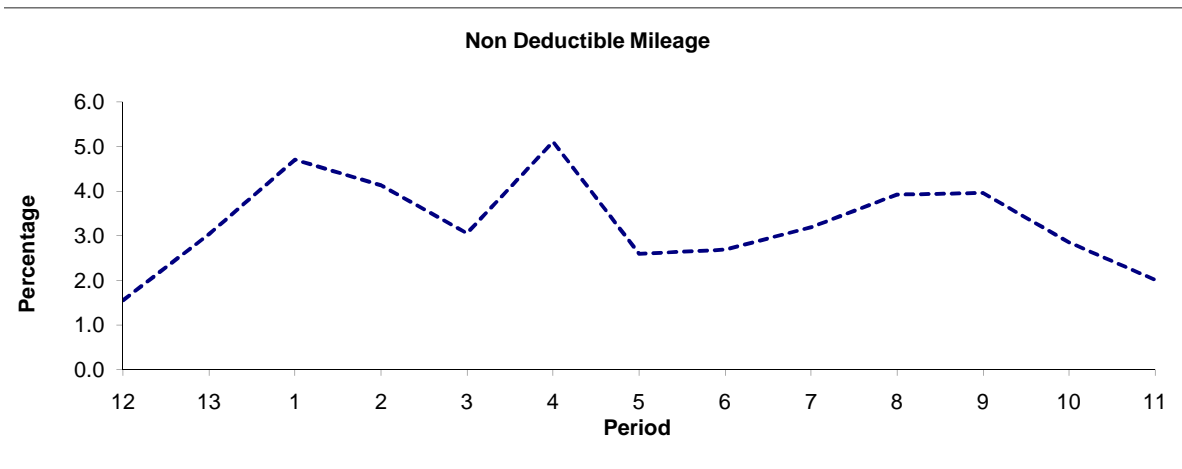
**Route 87**



Period	12	13	1	2	3	4	5	6	7	8	9	10	11
2010/2011	98.20	96.74	94.99	95.58	96.58	94.54	97.05	96.97	96.34	95.73	95.70	96.82	97.75
Min Standard	98.00	98.00	98.00	98.00	98.00	98.00	98.00	98.00	98.00	98.00	98.00	98.00	98.00



Period	12	13	1	2	3	4	5	6	7	8	9	10	11
2010/2011	0.25	0.22	0.30	0.29	0.37	0.35	0.36	0.34	0.47	0.35	0.34	0.33	0.24

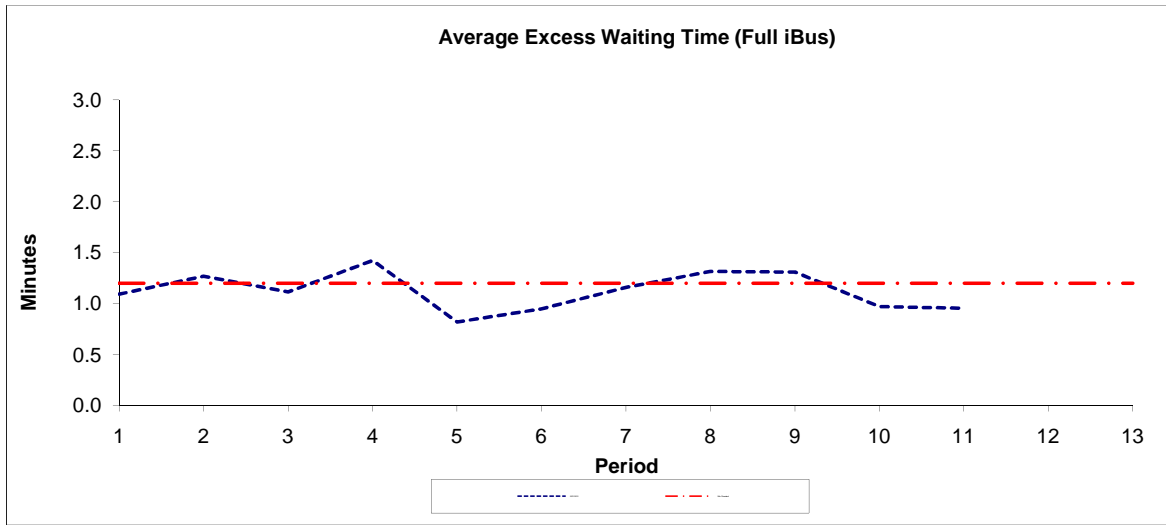


Period	12	13	1	2	3	4	5	6	7	8	9	10	11
2010/2011	1.55	3.04	4.71	4.13	3.05	5.11	2.59	2.69	3.19	3.92	3.96	2.85	2.01

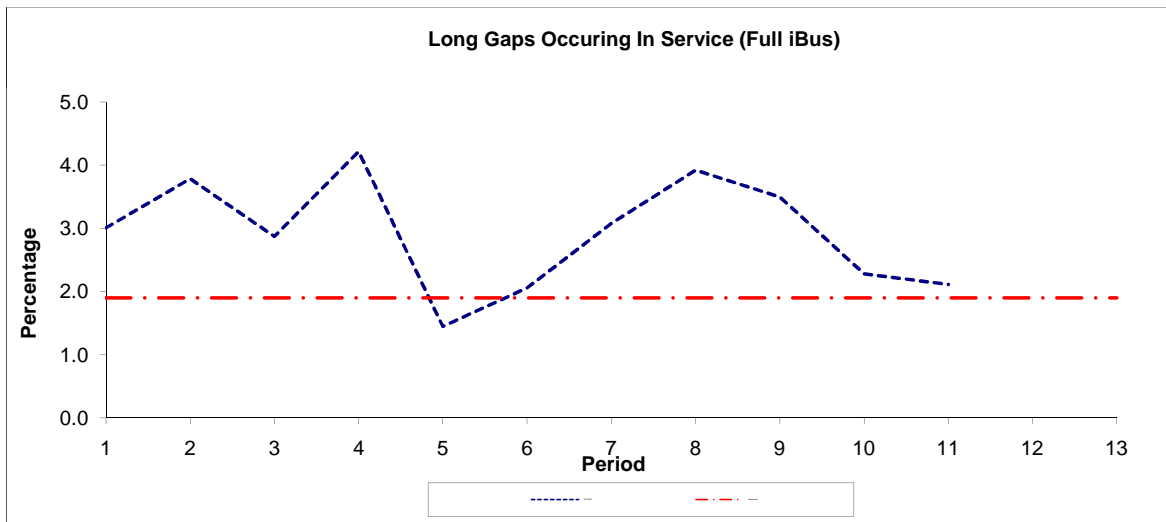
**Note :** Mileage is based on 4 weeks data

**PART B - PERFORMANCE STATISTICS**

**Route 87**



Period	1	2	3	4	5	6	7	8	9	10	11	12	13
2011/2012	1.09	1.27	1.12	1.42	0.82	0.95	1.16	1.32	1.31	0.97	0.96		
Min Standard	1.20	1.20	1.20	1.20	1.20	1.20	1.20	1.20	1.20	1.20	1.20	1.20	1.20

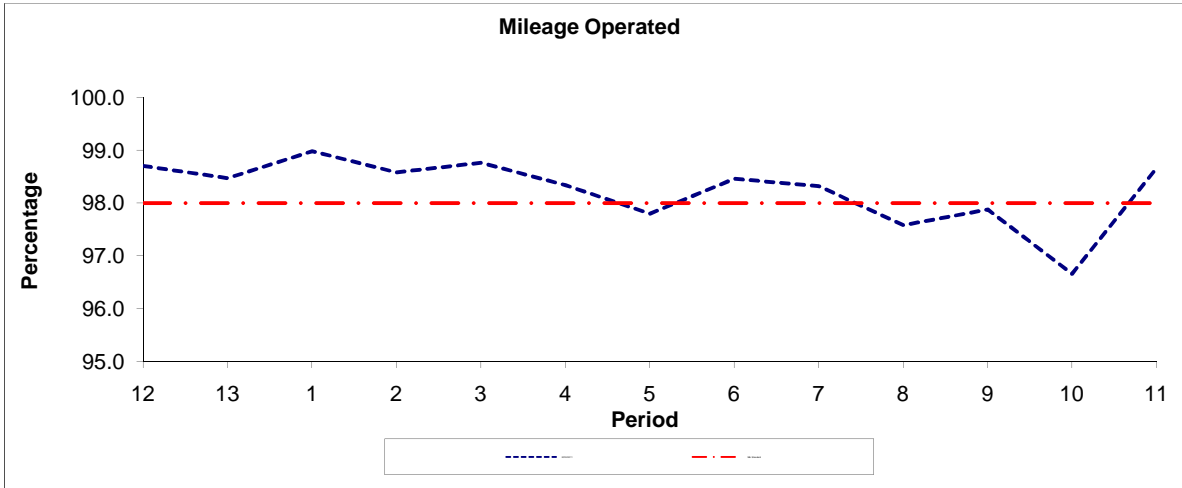


Period	1	2	3	4	5	6	7	8	9	10	11	12	13
2011/2012	3.01	3.79	2.87	4.21	1.45	2.06	3.08	3.92	3.49	2.28	2.12		
Benchmark	1.90	1.90	1.90	1.90	1.90	1.90	1.90	1.90	1.90	1.90	1.90	1.90	1.90

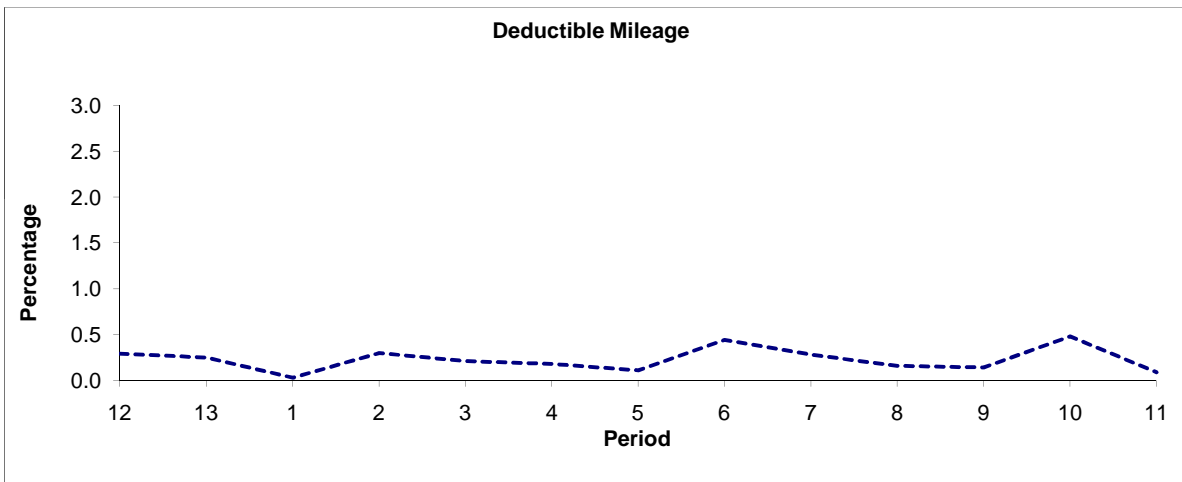
**Note :** Reliability is actual performance under full iBus (4 weeks data).  
 Minimum Standards and Benchmarks are those applicable under the new contract.

**PART B - PERFORMANCE STATISTICS**

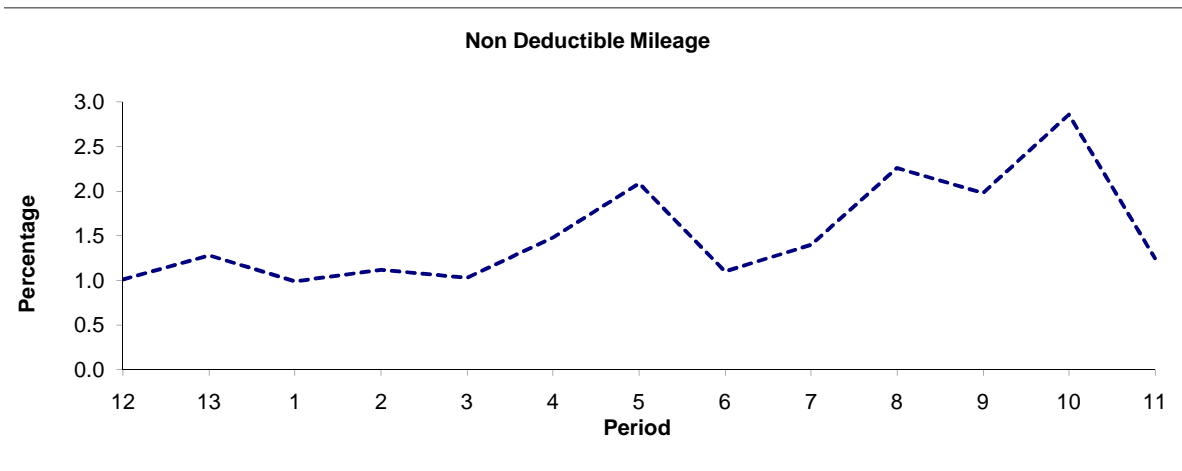
**Route N87**



Period	12	13	1	2	3	4	5	6	7	8	9	10	11
2010/2011	98.70	98.47	98.98	98.58	98.76	98.34	97.80	98.46	98.32	97.58	97.88	96.66	98.66
Min Standard	98.00	98.00	98.00	98.00	98.00	98.00	98.00	98.00	98.00	98.00	98.00	98.00	98.00



Period	12	13	1	2	3	4	5	6	7	8	9	10	11
2010/2011	0.29	0.25	0.03	0.30	0.21	0.18	0.11	0.44	0.28	0.16	0.14	0.48	0.09

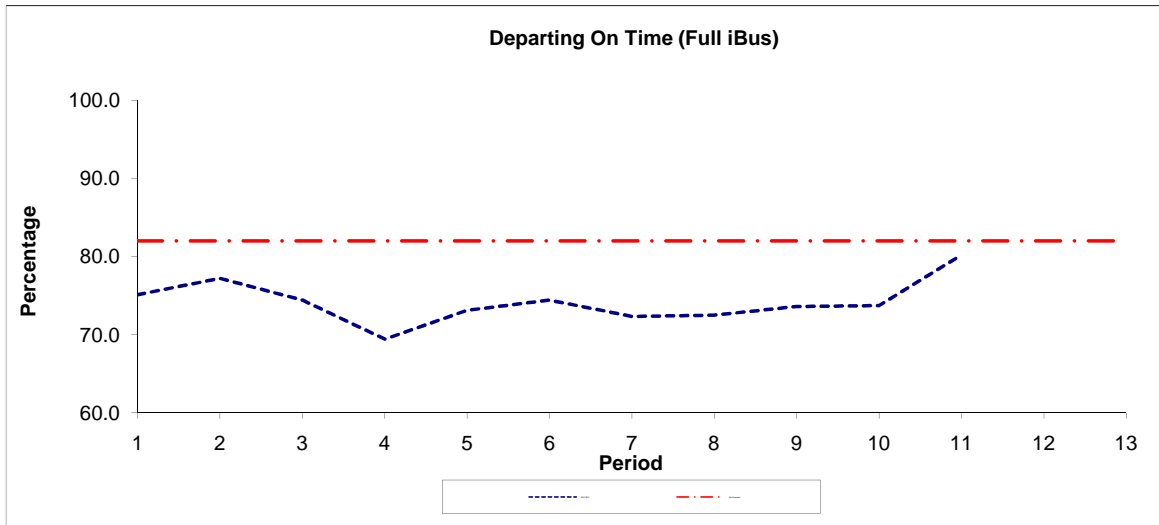


Period	12	13	1	2	3	4	5	6	7	8	9	10	11
2010/2011	1.01	1.28	0.99	1.12	1.03	1.48	2.09	1.10	1.40	2.26	1.98	2.86	1.25

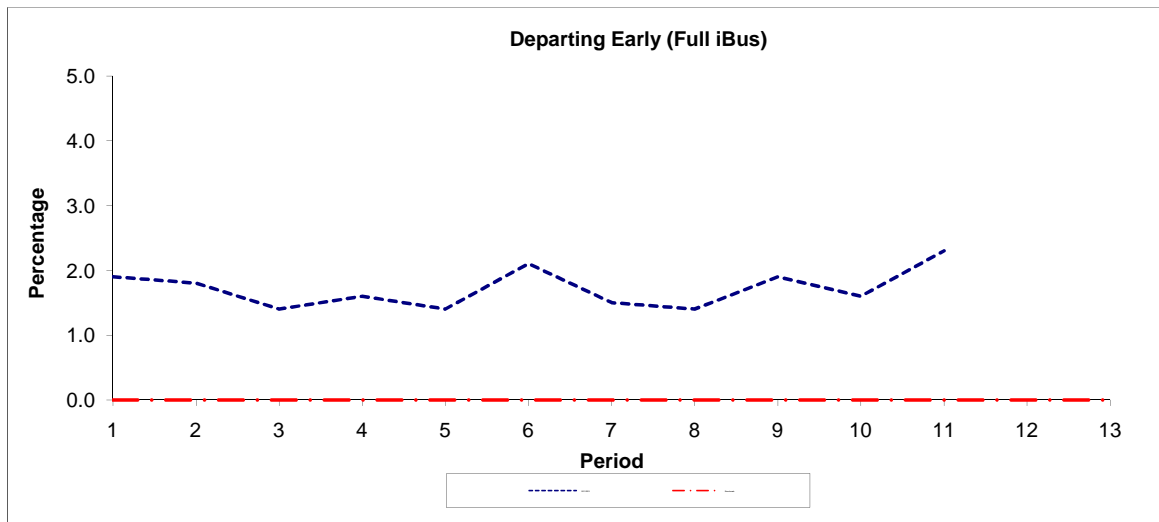
**Note :** Mileage is based on 4 weeks data

**PART B - PERFORMANCE STATISTICS**

**Route N87**



Period	1	2	3	4	5	6	7	8	9	10	11	12	13
2011/2012	75.10	77.20	74.40	69.40	73.10	74.40	72.30	72.50	73.60	73.70	80.20		
Min Standard	82.00	82.00	82.00	82.00	82.00	82.00	82.00	82.00	82.00	82.00	82.00	82.00	82.00



Period	1	2	3	4	5	6	7	8	9	10	11	12	13
2011/2012	1.90	1.80	1.40	1.60	1.40	2.10	1.50	1.40	1.90	1.60	2.30		
Benchmark	0.00	0.00	0.00	0.00	0.00	0.00	0.00	0.00	0.00	0.00	0.00	0.00	0.00

**Note :** Reliability is actual performance under full iBus (4 weeks data).  
 Minimum Standards and Benchmarks are those applicable under the new contract.

**ROUTE 87 - QUALITY OF SERVICE INDICATORS BY TIME OF DAY**  
**QUARTERS 1 to 3 2011/12 (01/04/11 - 09/12/11) Based on Full iBus**

**MONDAY - FRIDAY**

Time Period	Expected Buses	On AVL (%)	Scheduled Waiting Time (SWT) (mins)	Excess Waiting Time (EWT) (mins)	Actual Waiting Time (AWT) (mins)	Probability of Waiting < 10 mins (%)	Probability of Waiting 10-20 mins (%)	Probability of Waiting 20-30 mins (%)	Probability of Waiting > 30 mins (%)	Long Gaps (%)	Maximum Gap (mins)
0500 - 0700	18,620.	96.1	6.35	<b>0.64</b>	6.99	80.0	18.6	1.0	0.3	0.7	70.5
0700 - 1000	76,251.	97.3	3.09	<b>1.01</b>	4.11	94.3	5.3	0.3	0.1	2.6	55.3
1000 - 1300	78,600.	94.3	2.98	<b>1.14</b>	4.12	93.6	5.7	0.4	0.2	3.6	69.8
1300 - 1600	77,230.	95.9	3.01	<b>1.26</b>	4.26	93.1	6.4	0.5	0.1	3.7	57.0
1600 - 1900	78,072.	96.4	3.00	<b>1.22</b>	4.21	93.0	6.5	0.4	0.1	3.9	57.2
1900 - 2200	47,049.	98.7	4.81	<b>1.16</b>	5.97	80.9	17.3	1.4	0.4	2.4	65.1
2200 - 2400	23,020.	101.8	6.00	<b>1.05</b>	7.05	75.5	22.7	1.6	0.2	0.6	66.2
<b>Summary</b>	<b>398,842.</b>	<b>96.6</b>	<b>3.45</b>	<b>1.14</b>	<b>4.59</b>	<b>90.9</b>	<b>8.4</b>	<b>0.6</b>	<b>0.1</b>	<b>3.1</b>	<b>70.5</b>

**SATURDAY**

Time Period	Expected Buses	On AVL (%)	Scheduled Waiting Time (SWT) (mins)	Excess Waiting Time (EWT) (mins)	Actual Waiting Time (AWT) (mins)	Probability of Waiting < 10 mins (%)	Probability of Waiting 10-20 mins (%)	Probability of Waiting 20-30 mins (%)	Probability of Waiting > 30 mins (%)	Long Gaps (%)	Maximum Gap (mins)
0500 - 0700	3,101.	97.0	7.67	<b>0.43</b>	8.10	67.3	30.4	2.0	0.3	0.5	39.1
0700 - 1000	10,344.	95.9	4.67	<b>0.93</b>	5.59	86.4	13.0	0.6	0.0	0.8	43.1
1000 - 1300	15,535.	95.0	2.99	<b>1.25</b>	4.24	92.1	7.2	0.6	0.1	4.7	34.4
1300 - 1600	15,400.	94.5	3.00	<b>1.68</b>	4.68	89.5	9.3	0.9	0.3	6.5	54.7
1600 - 1900	14,337.	95.4	3.28	<b>1.40</b>	4.68	89.2	9.7	0.9	0.2	4.9	45.5
1900 - 2200	8,264.	98.2	5.54	<b>1.50</b>	7.04	74.4	23.0	2.3	0.3	1.7	49.3
2200 - 2400	4,840.	99.8	6.00	<b>1.19</b>	7.19	72.5	25.1	2.3	0.1	0.7	36.6
<b>Summary</b>	<b>71,821.</b>	<b>95.9</b>	<b>3.81</b>	<b>1.36</b>	<b>5.17</b>	<b>86.6</b>	<b>12.2</b>	<b>1.0</b>	<b>0.2</b>	<b>4.1</b>	<b>54.7</b>

**SUNDAY AND BANK HOLIDAYS**

Time Period	Expected Buses	On AVL (%)	Scheduled Waiting Time (SWT) (mins)	Excess Waiting Time (EWT) (mins)	Actual Waiting Time (AWT) (mins)	Probability of Waiting < 10 mins (%)	Probability of Waiting 10-20 mins (%)	Probability of Waiting 20-30 mins (%)	Probability of Waiting > 30 mins (%)	Long Gaps (%)	Maximum Gap (mins)
0500 - 0700	3,449.	97.2	7.52	<b>0.50</b>	8.01	68.9	29.0	2.0	0.1	0.3	42.1
0700 - 1000	7,088.	99.4	7.02	<b>0.72</b>	7.74	69.5	28.5	1.8	0.2	0.3	48.5
1000 - 1300	9,168.	98.3	5.66	<b>0.91</b>	6.57	78.1	20.0	1.5	0.4	1.2	60.0
1300 - 1600	8,960.	97.2	5.77	<b>1.16</b>	6.93	75.0	22.5	2.3	0.2	1.0	50.1
1600 - 1900	9,415.	97.5	5.76	<b>0.93</b>	6.69	76.9	21.6	1.3	0.1	0.6	49.9
1900 - 2200	9,410.	99.7	5.87	<b>0.95</b>	6.82	76.3	22.0	1.4	0.3	0.9	51.6
2200 - 2400	5,030.	103.0	6.00	<b>0.46</b>	6.46	79.3	19.9	0.8	0.0	0.2	42.9
<b>Summary</b>	<b>52,520.</b>	<b>98.8</b>	<b>5.93</b>	<b>0.92</b>	<b>6.85</b>	<b>75.9</b>	<b>22.2</b>	<b>1.6</b>	<b>0.2</b>	<b>0.8</b>	<b>60.0</b>

**ALL DAYS**

Time Period	Expected Buses	On AVL (%)	Scheduled Waiting Time (SWT) (mins)	Excess Waiting Time (EWT) (mins)	Actual Waiting Time (AWT) (mins)	Probability of Waiting < 10 mins (%)	Probability of Waiting 10-20 mins (%)	Probability of Waiting 20-30 mins (%)	Probability of Waiting > 30 mins (%)	Long Gaps (%)	Maximum Gap (mins)
0500 - 0700	25,170.	96.4	6.57	<b>0.61</b>	7.18	78.0	20.5	1.2	0.3	0.6	70.5
0700 - 1000	93,683.	97.3	3.42	<b>0.99</b>	4.41	92.4	7.1	0.4	0.1	2.4	55.3
1000 - 1300	103,303.	94.8	3.30	<b>1.13</b>	4.43	91.6	7.6	0.6	0.2	3.5	69.8
1300 - 1600	101,590.	95.8	3.30	<b>1.31</b>	4.61	90.6	8.5	0.7	0.1	3.8	57.0
1600 - 1900	101,824.	96.4	3.30	<b>1.21</b>	4.51	91.0	8.3	0.6	0.1	3.7	57.2
1900 - 2200	64,723.	98.8	5.02	<b>1.18</b>	6.20	79.6	18.5	1.5	0.4	2.1	65.1
2200 - 2400	32,890.	101.7	6.00	<b>0.99</b>	6.99	75.7	22.6	1.6	0.2	0.6	66.2
<b>Summary</b>	<b>523,183.</b>	<b>96.8</b>	<b>3.74</b>	<b>1.15</b>	<b>4.88</b>	<b>88.9</b>	<b>10.2</b>	<b>0.7</b>	<b>0.1</b>	<b>3.0</b>	<b>70.5</b>

**ROUTE N87 - QUALITY OF SERVICE INDICATORS BY DAY OF WEEK**  
**QUARTERS 1 to 3 2011/12 (01/04/11 - 09/12/11) Based on Full iBus**

Day Type (2400-0500 hours)	Expected Buses	% Observed	Departing On Time (%)	Non Arrival / Not Linked (%)	Departing 8 - 2.5 mins Early (%)	Departing 5 - 15 mins Late (%)
Monday - Friday morning *	45,876.	98.6	77.4	4.3	1.2	17.1
Saturday Morning	13,217.	97.1	72.5	10.5	1.8	15.2
Sunday Morning	13,599.	95.6	64.7	15.2	2.8	17.3
<b>All Days</b>	<b>72,692.</b>	<b>97.8</b>	<b>73.6</b>	<b>8.0</b>	<b>1.7</b>	<b>16.7</b>

\* Includes Bank Holiday mornings

Transport for London - Mileage and QSI Locations

v2.0 - Mileage directly imported from Caesar

Route 87  
 Service change 29125  
 Date 03/10/2011

Reason for Issue	Mileage Update
------------------	----------------

Version Detail

Locations shaded in blue denote QSI points under Full iBus

OUT DIRECTION					
Timing Point	Code	Stop Number	Stop Name	Metres	Miles
WANDPL	33274		Wandsworth Plain		
	33272		Wandsworth Town Hall	523	0.32
	597		East Hill / Alma Road	383	0.24
	8966		Marcilly Road	411	0.26
	8970		Plough Road	479	0.30
CISNSJ	429		Clapham Junction Station	486	0.30
	2350		Lavender Hill Post Office	278	0.17
	2348		Battersea Arts Centre	224	0.14
	2344		Tipthorpe Road	362	0.22
	459		Cedars Road	364	0.23
	2342		Victoria Rise	193	0.12
	2340		Silverthorne Road	249	0.15
	2338		St Rule Street	300	0.19
WDRDSN	25563		Wandsworth Road Station	190	0.12
	25562		Union Road	330	0.21
	25561		Larkhall Park	428	0.27
WDRDLW	2328		Lansdowne Green	156	0.10
	2324		Wilcox Road	411	0.26
	2322		Covent Garden Market East Side	338	0.21
VAUXSN	BP4317		Vauxhall Bus Station	647	0.40
	7841		Vauxhall Bridge Road	682	0.42
	26997		Tate Britain	281	0.17
MBNKTH	3359		Lambeth Bridge	264	0.16
	1629		Horseferry Road	228	0.14
	BP245		Abingdon Street	241	0.15
WMINPS	996		Parliament Square	613	0.38
	7867		Horse Guards Parade	232	0.14
TFSQCC	BP3505		Trafalgar Square / Charing Cross Stn	544	0.34
	7853		Southampton Street	398	0.25
AWCHWA	20983		Aldwych / Drury Lane	381	0.24
<b>TOTAL ROUTE MILEAGE - OUT DIRECTION</b>			10616 metres	6.60 miles	

BACK DIRECTION					
Timing Point	Code	Stop Number	Stop Name	Metres	Miles
AWCHSM	34323		Aldwych / Somerset House		
	14627		Savoy Street	314	0.20
	7852		Bedford Street	238	0.15
	146		Trafalgar Square / Charing Cross Stn	273	0.17
TFSQWH	152		Whitehall / Trafalgar Square	240	0.15
	R0470		Horse Guards Parade	234	0.15
WMINPS	BP5568		Westminster Stn / Parliament Square	209	0.13
	BP246		Abingdon Street	552	0.34
	1630		Horseferry Road	233	0.14
MBNKTH	3360		Lambeth Bridge	223	0.14
	26996		Tate Britain	335	0.21
	7842		Vauxhall Bridge Road	259	0.16
VAUXSN	BP4322		Vauxhall Bus Station	672	0.42
	2323		Covent Garden Market East Side	266	0.17
	25559		Wilcox Road	376	0.23
WDRDLW	2329		Lansdowne Green	416	0.26
	25560		Larkhall Park	283	0.18
	2355		Union Road	289	0.18
	BP5656		Pensbury Street	283	0.18
WDRDSN	2339		Wandsworth Road Station	200	0.12
	2341		Silverthorne Road	281	0.17
	25564		Lambourn Road	289	0.18
	460		Cedars Road	190	0.12
	2345		Tipthorpe Road	390	0.24
	2349		Battersea Arts Centre	316	0.20
	2351		Lavender Hill Police Station	259	0.16
CISNSJ	25566		Clapham Junction Station	408	0.25
	8973		Plough Road	320	0.20
	8969		Brussels Road	251	0.16
	8967		Marcilly Road	276	0.17
	596		Huguenot Place / Alma Road	477	0.30
	8961		Herridon Road	298	0.19
	17143		Wandsworth Town Hall	230	0.14
WANDPL	33434		Wandsworth Plain	376	0.23
<b>TOTAL ROUTE MILEAGE - BACK DIRECTION</b>			10256 metres	6.37 miles	

Transport for London - Mileage and QSI Locations

v2.0 - Mileage directly imported from Caesar

Route N87  
 Service change 30156  
 Date 31/03/2012

Reason for Issue	Mileage Update
------------------	----------------

Version Detail

Locations shaded in blue denote QSI points under Full iBus

OUT DIRECTION				
Timing Point Code	Stop Number	Stop Name	Metres	Miles
KINGFB	R0705	Fairfield Bus Station		
	R0699	Eden Street	605	0.38
	BP1084	Cromwell Road Bus Station	389	0.24
	BP272	Tiffin School / London Road	380	0.24
	10041	Vicarage House	407	0.25
	25144	Cambridge Grove	369	0.23
	10037	Waters Road	298	0.19
	20715	Kingsmeadow	158	0.10
	10031	Archdale Place	331	0.21
	BP3310	California Road	235	0.15
	R0348	Wellington Crescent	334	0.21
	27388	Elm Road/New Malden Baptist Church	327	0.20
	10023	St Joseph's Church	378	0.23
	27386	New Malden / the Fountain	280	0.17
NMALBR	34031	Walton Avenue	261	0.16
	10019	Queens Road	240	0.15
	9156	Rookwood Avenue	404	0.25
	9155	Burlington Road / Shannon Corner	215	0.13
	9153	Cavendish Avenue	183	0.11
	27392	West Barnes Level Crossing	368	0.23
	9152	Trafalgar Court	248	0.15
	9149	Farnham Gardens	287	0.18
	19091	Durham Road	294	0.18
RNPGRP	9145	Raynes Park Station	209	0.13
	27398	Raynes Park Methodist Church	249	0.15
	27393	Arterberry Road	391	0.24
	20600	Lower Downs Road	197	0.12
	9138	Albert Grove	322	0.20
	27934	Darlaston Road	241	0.15
	9131	Spencer Hill	340	0.21
	9127	Francis Grove	311	0.19
WIMBCB	LG66	Wimbledon Bus Station	714	0.44
	LG50	Wimbledon Station	410	0.25
	19048	St George's Road	180	0.11
	19050	Wimbledon Magistrates Court	357	0.22
	19052	Strathern Road	297	0.18
	19054	Avondale Road	431	0.27
	35801	Gap Road / Plough Lane	249	0.15
	19058	Pitt Crescent	516	0.32
	19060	Wimbledon Park / Arthur Road	482	0.30
	19062	Stroud Road	304	0.19
	19064	Penwith Road	289	0.18
	BP2756	Lavenham Road	314	0.20
	19066	Southfields Community College	214	0.13
	19068	Standen Road	295	0.18
	19070	The Park Tavern	381	0.24
	34348	Broomhill Road	531	0.33
	34349	Wandsworth / Southside	297	0.18
WANDPL	33274	Wandsworth Plain	193	0.12
	33272	Wandsworth Town Hall	523	0.32
	597	East Hill / Alma Road	383	0.24
	8966	Marclilly Road	411	0.26
	8970	Plough Road	479	0.30
CJSNSJ	429	Clapham Junction Station	486	0.30
	2350	Lavender Hill Post Office	278	0.17
	2348	Battersea Arts Centre	224	0.14
	2344	Tiphthorpe Road	362	0.22
	459	Cedars Road	364	0.23
	2342	Victoria Rise	193	0.12
	2340	Silverthorne Road	249	0.15
	2338	St Rule Street	300	0.19
	25563	Wandsworth Road Station	190	0.12
	25562	Union Road	330	0.21
	25561	Larkhall Park	428	0.27
	2328	Lansdowne Green	156	0.10
	2324	Wilcox Road	411	0.26
	2322	Covent Garden Market East Side	338	0.21
VAUXSN	BP4317	Vauxhall Bus Station	647	0.40
	7841	Vauxhall Bridge Road	682	0.42
	26997	Tate Britain	281	0.17
	3359	Lambeth Bridge	264	0.16
	1629	Horseferry Road	228	0.14
	BP245	Abingdon Street	241	0.15
	996	Parliament Square	613	0.38
	7867	Horse Guards Parade	232	0.14
TFSQCC	BP3505	Trafalgar Square / Charing Cross Stn	544	0.34
	7853	Southampton Street	398	0.25
AWCHWA	20983	Aldwych / Drury Lane	381	0.24
Total Route Mileage - Out Direction			26321	16.36
			Metres	Miles

BACK DIRECTION				
Timing Point Code	Stop Number	Stop Name	Metres	Miles
AWCHSM	34323	Aldwych / Somerset House		
	14627	Savoy Street	314	0.20
	7852	Bedford Street	238	0.15
	146	Trafalgar Square / Charing Cross Stn	273	0.17
TFSQWH	152	Whitehall / Trafalgar Square	240	0.15
	R0470	Horse Guards Parade	234	0.15
	BP5568	Westminster Stn / Parliament Square	209	0.13
	BP246	Abingdon Street	552	0.34
	1630	Horseferry Road	233	0.14
	3360	Lambeth Bridge	223	0.14
	26996	Tate Britain	335	0.21
	7842	Vauxhall Bridge Road	259	0.16
VAUXSN	BP4322	Vauxhall Bus Station	672	0.42
	2323	Covent Garden Market East Side	266	0.17
	25559	Wilcox Road	376	0.23
	2329	Lansdowne Green	416	0.26
	25560	Larkhall Park	283	0.18
	2355	Union Road	289	0.18
	BP5656	Pensbury Street	283	0.18
	2339	Wandsworth Road Station	200	0.12
	2341	Silverthorne Road	281	0.17
	25564	Lambourn Road	289	0.18
	460	Cedars Road	190	0.12
	2345	Tiphthorpe Road	390	0.24
	2349	Battersea Arts Centre	316	0.20
	2351	Lavender Hill Police Station	259	0.16
CISNSJ	25566	Clapham Junction Station	408	0.25
	8973	Plough Road	320	0.20
	8969	Brussels Road	251	0.16
	8967	Marclilly Road	276	0.17
	596	Huguenot Place / Alma Road	477	0.30
	8961	Herndon Road	298	0.19
WANDAC	34069	Wandsworth / Southside	416	0.26
	14933	Broomhill Road	530	0.33
	19071	The Park Tavern	408	0.25
	19069	Standen Road	413	0.26
	19067	Southfields Community College	328	0.20
	19065	Penwith Road	281	0.17
	19063	Gordondale Road	296	0.18
	19061	Wimbledon Park / Arthur Road	297	0.18
	19059	Pitt Crescent	698	0.43
	19057	Plough Lane	296	0.18
	19055	Avondale Road	349	0.22
	19053	Strathern Road	511	0.32
	19051	Wimbledon Magistrates Court	364	0.23
	19049	St George's Road	292	0.18
	BP106	Wimbledon Station	257	0.16
WIMBCB	LG67	Wimbledon Bus Station	325	0.20
	LG65	Wimbledon Station	329	0.20
	25629	Francis Grove	342	0.21
	9132	Spencer Hill	417	0.26
	27389	Darlaston Road	377	0.23
	9137	Albert Grove	195	0.12
	20601	Lower Downs Road	229	0.14
	27390	Arterberry Road	260	0.16
	27399	Pepys Road	183	0.11
RNPGRP	19869	Raynes Park Station	337	0.21
	6920	Durham Road	219	0.14
	9150	Farnham Gardens	419	0.26
	9151	Trafalgar Court	265	0.16
	27391	West Barnes Level Crossing	347	0.22
	9154	Cavendish Avenue	291	0.18
	9157	Rookwood Avenue	461	0.29
	R0154	Queens Road	358	0.22
NMALBR	27383	Walton Avenue	210	0.13
	27387	New Malden / the Fountain	181	0.11
	10024	St Joseph's Church	369	0.23
	10028	Elm Road / New Malden Baptist Church	348	0.22
	20662	Springfield Place	495	0.31
	10032	California Road	188	0.12
	25057	Kingsmeadow	397	0.25
	25143	Waters Road	250	0.16
	10038	Cambridge Grove	356	0.22
	BP1528	Vicarage House	317	0.20
	R0277	Norbiton Church	218	0.14
	BP387	Tiffin School / London Road	171	0.11
KINGFB	BP386	Fairfield Bus Station	328	0.20
Total Route Mileage - Back Direction			24568	15.27
			Metres	Miles