

SECTION 2: PART A

SERVICE SPECIFICATION FOR ROUTE No. 66

CONTENTS

	Page
1. Tenders Required	2
2. Proposed Changes	2
3. Terminals	2
4. Days of Operation	2
5. Vehicle Type	3
6. Frequencies	4
7. Minimum Performance Standards	9
8. Running Times	10
9. Layovers	10
10. Timing Constraints	10
11. Control Strategy	11
12. Operational Considerations	12
13. Stopping Arrangements	13
14. Timing Points and Mileages	13
15. Vehicle Livery	13
16. Stands and Blinds	14
 <u>Appendices</u>	
A. Sample Running Times for Route No. 66	15
B. Route Record	18

This document should be read in conjunction with the Corporation's Guide for Tenderers (Part A: Explanatory Notes - Service Requirements). Where appropriate, reference is made to the relevant section.

1. TENDERS REQUIRED

This document describes the service for which the Corporation requires Tenders and Tenderers **must** submit a fully compliant bid. In addition, Tenderers **may** wish to draw upon their local knowledge to submit alternative bids which offer improved value for money in meeting passenger needs. These might incorporate, for example, different timings, frequencies, route structures and / or vehicles. The Corporation will welcome such bids and give them careful consideration.

For more information, please refer to Section 2.1 of Part A of the Guide for Tenderers.

2. PROPOSED CHANGES

At this time, the Corporation expects to implement a change to the existing service prior to the commencement of the new Route Agreement for Route No. 66.

- From 5th September 2009, Route No. 66 is re-routed from Cambridge Park via Wanstead High Street, New Wanstead and Green Man roundabout to Leytonstone High Road, ex Romford Station. Ex Leytonstone Bus Station, Route No. 66 is re-routed from Green Man roundabout via New Wanstead and Wanstead High Street to Cambridge Park.

Tenderers should note that the following alterations (subject to consultation) are proposed as part of this Service Specification for introduction with the new Route Agreement:

- First departures are re-timed on Sundays.

3. TERMINALS

Route No. 66 will operate between Romford Station and Leytonstone Bus Station.

Full details of the route to be followed, the permitted terminal workings and the available stands are shown at Appendix B. Tenderers should particularly note the information relating to the shared usage of stands, the taking of meal reliefs and the use of ferry vehicles.

4. DAYS OF OPERATION

One timetable must be offered for Route No. 66 which will operate as follows:

DAY OF OPERATION	
Mondays to Fridays	Section 6.1
Saturdays & Good Friday	Section 6.2
Sundays	Section 6.3
Christmas Day	No service
Boxing Day	Section 6.4
Other Public Holidays	Sunday service

5. VEHICLE TYPE

Please refer to Section 2.5 of Part A of the Guide for Tenderers.

Route No. 66 is currently approved for vehicles which are a maximum of 10.7 metres long and 2.4 metres wide. A formal route test will be required for vehicles which exceed these dimensions. This will be arranged with the successful Tenderer.

The service requirement set out in Section 6 assumes that dual door, single deck buses with a minimum capacity of 60 of which approximately 33 should be seated, will be used on this route. Luggage space should also be provided.

Tenderers must submit proposals based on new vehicles. These must be of a low floor design and be accessible to wheelchairs by means of a powered ramp.

Bids for both conventional diesel powered vehicles and diesel-electric hybrid vehicles should be submitted and separate prices for both types are required.

Bids based on a mix of hybrid and conventional vehicles would be welcomed, subject to a minimum of 10 hybrid powered vehicles being offered for this route (full hybrid operation should be offered for routes with a vehicle requirement of less than 10).

Tenderers should refer to the vehicle design (including accessibility) features contained in Schedule II to Annex B of the Framework Agreement and Section 2 Part B of the Master ITT (Version 2 issued June 2005).

Tenderers may also submit bids based on using existing vehicles. Tenderers are asked to specify what refurbishment would be carried out on existing buses and the expected timescale of those works. See Master ITT (Version 2 issued June 2005).

6. FREQUENCIES

The level of service (e.g. every 15 minutes) required by the Corporation is described in terms of the interval between departures. Whilst a completely regular service at the specified frequency should be possible at most times, occasionally a bus may be timetabled to depart up to five minutes earlier or later than the regular time.

Tenderers should note that when the specified frequency changes (e.g. between the peak and midday periods), the scheduled interval between buses should never be greater than that provided by the lower of the two frequencies **AT ANY POINT ON THE ROUTE**.

Tenderers should note that unless otherwise stated **all** journeys should operate between the terminal points defined in each direction.

6.1 Mondays to Fridays

1. Romford Station to Leytonstone Bus Station

0455 - 0600	Every 15 minutes
0601 - 1900	Every 12 minutes
1901 - 2000	Every 15 minutes
2001 - 2020	Every 20 minutes
2021 - 0025	Every 30 minutes*

First departure from Romford Station no later than 0500.

Last departure from Romford Station no earlier than 0020.

Tenderers should ensure that buses are scheduled to be no more 12 minutes apart at Gants Hill Station between 0720 and 0900 and between 1505 and 1640.

*** Buses operating towards Leytonstone Bus Station are diverted after 2130 (until last bus) from Romford Station forecourt via South Street and Victoria Road to Mercury Gardens to resume line of routeing after the junction of Mercury Gardens & Western Road. Buses will consequently not serve the stop on Western Road (see section 12 for further details).**

2. Leytonstone Bus Station to Romford Station

0530 - 0635	Every 15 minutes
0636 - 1900	Every 12 minutes
1901 - 2000	Every 15 minutes
2001 - 2040	Every 20 minutes
2041 - 0045	Every 30 minutes

First departure from Leytonstone Bus Station no later than 0535.

Last departure from Leytonstone Bus Station no earlier than 0040.

Tenderers should ensure that buses are scheduled to be no more than 12 minutes apart at Chadwell Heath, Moby Dick between 0700 and 0900 and between 1500 and 1635.

6.2 Saturdays & Good Friday

1. Romford Station to Leytonstone Bus Station

0455 - 0700	Every 30 minutes
0701 - 0800	Every 15 minutes
0801 - 1800	Every 12 minutes
1801 - 1900	Every 15 minutes
1901 - 1920	Every 20 minutes
1921 - 0025	Every 30 minutes*

First departure from Romford Station no later than 0500.

Last departure from Romford Station no earlier than 0020.

Tenderers should ensure that buses are scheduled to be no more 12 minutes apart at Gants Hill Station between 0820 and 1135.

*** Buses operating towards Leytonstone Bus Station are diverted after 2130 (until last bus) from Romford Station forecourt via South Street and Victoria Road to Mercury Gardens to resume line of routeing after the junction of Mercury Gardens & Western Road. Buses will consequently not serve the stop on Western Road (see section 12 for further details).**

2. Leytonstone Bus Station to Romford Station

0530 - 0735	Every 30 minutes
0736 - 0835	Every 15 minutes
0836 - 1800	Every 12 minutes
1801 - 1900	Every 15 minutes
1901 - 1940	Every 20 minutes
1941 - 0045	Every 30 minutes

First departure from Leytonstone Bus Station no later than 0535.

Last departure from Leytonstone Bus Station no earlier than 0040.

Tenderers should ensure that buses are scheduled to be no more than 12 minutes apart at Chadwell Heath, Moby Dick between 0855 and 1120.

6.3 Sundays

1. Romford Station to Leytonstone Bus Station

0545 - 0025 Every 30 minutes*

First departure from Romford Station no later than 0550.
Last departure from Romford Station no earlier than 0020.

Tenderers should ensure that buses are scheduled to be no more 30 minutes apart at Gants Hill Station between 1010 and 1140.

*** Buses operating towards Leytonstone Bus Station are diverted after 2130 (until last bus) from Romford Station forecourt via South Street and Victoria Road to Mercury Gardens to resume line of routeing after the junction of Mercury Gardens & Western Road. Buses will consequently not serve the stop on Western Road (see section 12 for further details).**

2. Leytonstone Bus Station to Romford Station

0705 - 0045 Every 30 minutes

First departure from Leytonstone Bus Station no later than 0710.
Last departure from Leytonstone Bus Station no earlier than 0040.

Tenderers should ensure that buses are scheduled to be no more than 30 minutes apart at Chadwell Heath, Moby Dick between 1000 and 1130.

6.4 Boxing Day

1. Romford Station to Leytonstone Bus Station

0745 - 0025 Every 30 minutes*

First departure from Romford Station no later than 0750.
Last departure from Romford Station no earlier than 0020.

Tenderers should ensure that buses are scheduled to be no more 30 minutes apart at Gants Hill Station between 1010 and 1140.

*** Buses operating towards Leytonstone Bus Station are diverted after 2130 (until last bus) from Romford Station forecourt via South Street and Victoria Road to Mercury Gardens to resume line of routeing after the junction of Mercury Gardens & Western Road. Buses will consequently not serve the stop on Western Road (see section 12 for further details).**

2. Leytonstone Bus Station to Romford Station

0805 - 0045 Every 30 minutes

First departure from Leytonstone Bus Station no later than 0810.
Last departure from Leytonstone Bus Station no earlier than 0040.

Tenderers should ensure that buses are scheduled to be no more than 30 minutes apart at Chadwell Heath, Moby Dick between 1000 and 1130.

7. MINIMUM PERFORMANCE STANDARDS

Please refer to Section 2.7 of Part A of the Guide for Tenderers.

Tenderers should note that the objective of the Operator of Route No. 66 shall be to operate all scheduled mileage and adhere **fully** to the published timetable. The Operator must use its best endeavours to achieve this.

The **minimum** standards of acceptable performance for Route No. 66 shall be:

Average Excess Wait Time:	No more than 1.10 minutes
Minimum Operated Mileage:	No less than 98.00%

or as notified by the Corporation from time to time. The Operator will be required to achieve or better the standards.

QSI Thresholds

The QSI threshold is the standard of performance to be achieved by the operator in order to qualify for an automatic contract extension (in accordance with Schedule IX of the Framework Agreement).

Average Excess Wait Time Threshold = 0.95 minutes

Summary of proposed QSI coverage: Route No. 66

Note: While London Buses undertakes to carry out QSI surveys at the times and locations specified below, it may prove impossible to rearrange a survey cancelled or nullified at short notice.

Survey locations

Towards Leytonstone Bus Station
Romford

Towards Romford Station
Leytonstone
Redbridge

Total scheduled manual QSI surveys per quarter = 48.

8. RUNNING TIMES

Extracts from the public timetable with sample running times for Route No. 66 are attached at Appendix A. This gives an indication of the time required to travel the route. Attention is drawn to the variations in running times at different times of the day. Please refer to Section 2.8 of Part A of the Guide for Tenderers for further information.

Tenderers should carefully check the existing running times to ensure that they are appropriate in present traffic conditions. Tenderers should particularly check the existing running times for the Mondays to Fridays early evening and the Saturday afternoon shopping period.

It is expected that any changes to these running times can be accommodated within existing cycle times.

When reviewing existing, and devising new, running times Tenderers should refer to:

- the minimum performance standards for Route No. 66 in Section 7 above;
- the historical performance data provided in Section 1 Part B of the introduction to this ITT;
- the paragraph in Section 12 referring to the proposed extension of the Cashless Boarding zone throughout the whole of the London area.

Tenderers may consider if school summer holiday schedules, incorporating running time reductions, are desirable for this route. In this event, schedules and costs must be submitted separately.

9. LAYOVERS

Under normal circumstances, layover time on stands and at bus stations should be restricted to that required to provide a reliable service. Longer layovers for any other purpose may only be taken with the permission of the Corporation.

10. TIMING CONSTRAINTS

Route No. 66 should be separated from Route No. N8 between Gants Hill Station and Redbridge Station.

Tenderers submitting bids should bear this requirement in mind when compiling schedules. This requirement will be negotiated with the successful Tenderer for this route to ensure that optimal interworking/separation is delivered within its schedules.

11. CONTROL STRATEGY

Route No. 66 can suffer from the effects of traffic congestion, making some form of route control essential in order to achieve or better the minimum performance standards for this route.

Tenderers should submit proposals on the control strategy they intend to adopt and the type of control they would intend to use by completing the form provided in Section 3: Part 7 of this ITT. The cost of this control should be included within the main Tender price.

Tenderers should also indicate how they intend to facilitate driver changeovers and meal reliefs for this route.

Further information is provided in Section 2.11 of Part A of the Guide for Tenderers.

12. OPERATIONAL CONSIDERATIONS

Tenderers should note the following operating considerations affecting Route No. 66:

- Romford Market, which is held on Wednesdays, Fridays and Saturdays, can lead to traffic delays in the Romford area.
- Route No. 66 suffers from unpredictable traffic delays in the Forest Gate, Ilford and Romford areas.
- Parts of South Street and Western Road in Romford are closed to northbound traffic after 2130 as a result of safety concerns due to anti social behaviour. Buses on Route No. 66 operating towards Leytonstone Bus Station are diverted after 2130 (until last bus) from Romford Station forecourt via South Street and Victoria Road to Mercury Gardens to resume line of routeing after the junction of Mercury Gardens & Western Road. Buses will consequently not serve the stop on Western Road. Southbound traffic is not affected. Thus buses operating towards Romford Station are unaffected and remain on normal line of route.

Tenderers should also note the following factors/events which may have an impact on Route No. 66 in the foreseeable future:

- Further developments are progressing in Romford town centre, including the Market Square and the new Asda store at Liberty 2 (located at the junction of Main Road, St. Edwards Way and Mercury Gardens). Over the next 10 years, there should be fairly significant increases in residential and commercial properties within and along the inner ring road. This will affect demand on the route.
- In Romford, a proposal exists for Western Road to operate two-way for buses only. Buses would no longer serve Chandlers Way and Eastern Road. This will simplify the routeing and allow scope to review bus stop locations.
- It is anticipated that Cashless Boarding will be extended throughout London at some stage during the lifetime of this contract. **This is expected to lead to significant savings in running and recovery times to bus routes, and, therefore, potential resource (cycle time and PVR) savings are expected. Tenderers are required to identify and submit the level of savings per vehicle that could be achieved by reducing peak vehicle requirement, and/or how reliability targets could be revised when the Scheme is introduced.**

The above factors have been included to assist Tenderers and represents the information currently available to the Corporation. Tenderers should make their own enquiries about events which may impact upon the route and should form their own views about their likely effect upon it.

13. STOPPING ARRANGEMENTS

Buses operating on Route No. 66 must serve all stops on the line of route designated for the route.

14. TIMING POINTS & MILEAGES

Timing Points

The required timing points (and codes) are shown in Caesar.

Mileages for Route No. 66

Romford Station to Leytonstone Bus Station	9.4 miles
Romford Station to Leytonstone Bus Station (via Victoria Road)	9.4 miles
Leytonstone Bus Station to Romford Station	9.9 miles

Tenderers should note that:

- these measurements are believed to be accurate to within 0.5 miles, but no warranty or representation as to accuracy is given;
- out of service stand workings have not been measured and are not included within the above measurements;
- if alternative or additional measurements are used by the Tenderer, these must be stated in the tender submission;
- point to point measurements pertaining to recognised curtailment points or alternative terminals will be agreed with the successful Tenderer once the contract has been awarded.

15. VEHICLE LIVERY

All vehicles to be used on Route No. 66 from the commencement of the new Route Agreement must be in a livery that is exclusively Corporation red. The paint should be matched accurately to the colour as defined by the following manufacturer's specifications:

ICI London Bus Red P498 FPF 3

Other manufacturers should also be able to produce this specification from the ICI colour chart.

This requirement does not include the lower panels which may be in a different colour but which shall not exceed 50cm in height, or the rooftop which should be painted white so as to reduce temperatures inside the vehicle during the summer months.

The positioning and size of Operators' logos are to be agreed between the Operator and the Corporation and, where possible, these should be above the front doors on the nearside of the vehicles and above the drivers' offside cab windows.

All livery proposals must be submitted to the Contracts Tendering Manager for approval.

16. STANDS AND BLINDS

Tenderers should note that under normal circumstances, the specific restrictions relating to each stand will apply to the whole stand at all times. Any variation to such standing arrangements must be agreed by the Corporation. In addition, Tenderers should note the following general requirements:

- 1) Drivers MUST switch off engines during layover periods at bus stations or on stands.
- 2) No meal reliefs may be taken on any stand (on or off line of route) without the permission of the Corporation.
- 3) No crew ferry vehicles may enter any stand (on or off line of route) without the permission of the Corporation.
- 4) Destination blind displays to be used are shown under each stand description. Tenderers may suggest, within their bids, alternative blind displays.
- 5) The intermediate (also known as via) blind display to be used on the nearside of the vehicle is shown in the box below:

66 via Eastern Avenue

For further information, please refer to Annex C of the Framework Agreement: General Conditions relating to the use of London Buses' Bus Stations and Stands.

APPENDIX A: SAMPLE RUNNING TIMES FOR ROUTE No. 66

(based on current schedule)

MONDAYS TO FRIDAYS

1. Romford Station to Leytonstone Bus Station

	Typical early morning	Longest morning peak	Typical interpeak	Longest afternoon peak	Typical late evening
Romford Station	0500	0758	1200	1700	2250
Romford Market <i>St. Edwards Way</i>	0502	0801	1204	1704	2252
Romford <i>Parkside Avenue</i>	0505	0806	1209	1709	2255
Chadwell Heath <i>Moby Dick</i>	0509	0812	1213	1714	2259
Little Heath <i>Barley Lane/Eastern Avenue</i>	0512	0817	1218	1719	2302
Newbury Park Station	0515	0823	1223	1725	2305
Gants Hill Station	0519	0830	1228	1730	2309
Redbridge Station	0521	0836	1232	1734	2311
Wanstead Station <i>Cambridge Park</i>	0524	0844	1237	1739	2314
Leytonstone Bus Station	0530	0854	1245	1747	2320
	30 minutes	56 minutes	45 minutes	47 minutes	30 minutes

2. Leytonstone Bus Station to Romford Station

	Typical early morning	Longest morning peak	Typical interpeak	Longest afternoon peak	Typical late evening
Leytonstone Bus Station	0535	0800	1201	1653	2305
Wanstead Station <i>Cambridge Park</i>	0539	0810	1210	1705	2309
Redbridge Station	0542	0814	1214	1711	2312
Gants Hill Station	0546	0820	1219	1718	2316
Newbury Park Station	0550	0825	1224	1725	2320
Little Heath <i>Barley Lane/Eastern Avenue</i>	0554	0830	1229	1731	2324
Chadwell Heath <i>Moby Dick</i>	0557	0834	1233	1735	2327
Romford <i>North Street Bus Garage</i>	0601	0840	1238	1741	2331
Romford Market <i>St. Edwards Way</i>	0605	0845	1242	1747	2334
Romford Station	0608	0850	1246	1751	2337
	33 minutes	50 minutes	45 minutes	58 minutes	32 minutes

SATURDAYS**1. Romford Station to Leytonstone Bus Station**

	Typical early morning	Typical late AM shopping period	Typical PM shopping period	Typical late evening
Romford Station	0500	1116	1504	2250
Romford Market <i>St. Edwards Way</i>	0502	1121	1509	2252
Romford <i>Parkside Avenue</i>	0505	1126	1514	2255
Chadwell Heath <i>Moby Dick</i>	0509	1131	1519	2259
Little Heath <i>Barley Lane/Eastern Avenue</i>	0512	1136	1524	2302
Newbury Park Station	0515	1141	1529	2305
Gants Hill Station	0519	1147	1535	2309
Redbridge Station	0521	1150	1538	2311
Wanstead Station <i>Cambridge Park</i>	0524	1155	1543	2314
Leytonstone Bus Station	0530	1205	1553	2320
	30 minutes	49 minutes	49 minutes	30 minutes

2. Leytonstone Bus Station to Romford Station

	Typical early morning	Typical late AM shopping period	Typical PM shopping period	Typical late evening
Leytonstone Bus Station	0535	1102	1502	2305
Wanstead Station <i>Cambridge Park</i>	0539	1112	1512	2309
Redbridge Station	0542	1117	1517	2312
Gants Hill Station	0546	1123	1523	2316
Newbury Park Station	0550	1129	1529	2320
Little Heath <i>Barley Lane/Eastern Avenue</i>	0554	1134	1534	2324
Chadwell Heath <i>Moby Dick</i>	0557	1138	1538	2327
Romford <i>North Street Bus Garage</i>	0601	1143	1543	2331
Romford Market <i>St. Edwards Way</i>	0605	1149	1549	2334
Romford Station	0608	1153	1553	2337
	33 minutes	51 minutes	51 minutes	32 minutes

SUNDAYS**1. Romford Station to Leytonstone Bus Station**

	Typical early morning	Typical late AM shopping period	Typical PM shopping period	Typical late evening
Romford Station	0600	1123	1523	2250
Romford Market <i>St. Edwards Way</i>	0602	1126	1526	2252
Romford <i>Parkside Avenue</i>	0605	1130	1530	2255
Chadwell Heath <i>Moby Dick</i>	0609	1134	1534	2259
Little Heath <i>Barley Lane/Eastern Avenue</i>	0612	1138	1538	2302
Newbury Park Station	0615	1142	1542	2305
Gants Hill Station	0619	1147	1547	2309
Redbridge Station	0621	1151	1551	2311
Wanstead Station <i>Cambridge Park</i>	0624	1156	1556	2314
Leytonstone Bus Station	0630	1205	1605	2320
	30 minutes	42 minutes	42 minutes	30 minutes

2. Leytonstone Bus Station to Romford Station

	Typical early morning	Typical late AM shopping period	Typical PM shopping period	Typical late evening
Leytonstone Bus Station	0705	1105	1502	2305
Wanstead Station <i>Cambridge Park</i>	0709	1111	1509	2309
Redbridge Station	0712	1114	1513	2312
Gants Hill Station	0716	1118	1518	2316
Newbury Park Station	0720	1123	1523	2320
Little Heath <i>Barley Lane/Eastern Avenue</i>	0724	1128	1528	2324
Chadwell Heath <i>Moby Dick</i>	0727	1131	1532	2327
Romford <i>North Street Bus Garage</i>	0731	1135	1537	2331
Romford Market <i>St. Edwards Way</i>	0735	1139	1541	2334
Romford Station	0738	1143	1545	2337
	33 minutes	38 minutes	43 minutes	32 minutes

The above tables have been included to assist Tenderers. They represent the information currently available to the Corporation. Tenderers should form their own views about what is appropriate in terms of running times. (See Section 8.)

LONDON BUSES - ROUTE DESCRIPTION

ROUTE 66: Romford Station - Leytonstone Bus Station

Date of Structural Change: 4 September 2010.

Date of Service Change: 4 September 2010.

Reason for Issue: New Tender.

STREETS TRAVERSED

Towards Leytonstone Bus Station: Romford Station Forecourt, South Street, Western Road, Mercury Gardens, Main Road Roundabout, St Edwards Way, North Street, Eastern Avenue West, Moby Dick, Eastern Avenue West, Eastern Avenue, Gants Hill Cross, Eastern Avenue, Redbridge Roundabout, Eastern Avenue, Harrier Avenue, Eastern Avenue, The Green, Wanstead High Street, New Wanstead, Hollybush Hill, Green Man Roundabout, Leytonstone High Road, Gainsborough Road, Lemna Road, Kirkdale Road, Leytonstone Bus Station.

Special Journey towards Leytonstone Bus Station between Romford Station Forecourt and Mercury Gardens:

After 2130 every night buses operate from Romford Station Forecourt, then via South Street, Victoria Road rejoining line of route at Mercury Gardens.

Towards Romford Station: Leytonstone Bus Station, Church Lane, Leytonstone High Road, Green Man Roundabout, Hollybush Hill, New Wanstead, Wanstead High Street, Kingfisher Avenue, Eastern Avenue, Redbridge Roundabout, Eastern Avenue, Redbridge Station Forecourt, Redbridge Lane East, Redbridge Roundabout, Eastern Avenue, Gants Hill Cross, Eastern Avenue, Newbury Park Station Forecourt, Eastern Avenue, Eastern Avenue West, Moby Dick, Eastern Avenue West, North Street, St Edwards Way, Main Road Roundabout, Mercury Gardens, Western Road, Grimshaw Way, Slaney Road, Chandlers Way, Eastern Road, South Street, Atlanta Boulevard.

STANDING AND TURNING POINTS

ROMFORD STATION, ATLANTA BOULEVARD

Private stand for 15 buses in marked bays in Bus Parking Area in Atlanta Boulevard on south side of Romford Station.

Buses proceed from Atlanta Boulevard direct to stand, departing via Atlanta Boulevard to Romford Station Forecourt. Set down in Atlanta Boulevard, at Alighting Point and pick up in Romford Station Forecourt, at Stop Z.

AVAILABILITY:	At any time.
OPERATING RESTRICTIONS:	No more than 2 buses on Route 66 should be scheduled to stand at any one time.
MEAL RELIEFS:	No meal relief vehicles to stand at any time.
FERRY VEHICLES:	No ferry vehicles to park on stand at any time.
DISPLAY:	Romford Station.
OTHER INFORMATION:	LBSL Toilet facilities available 24 hours a day.

GANTS HILL STATION

Public stand for four buses on north side (offside) of Perth Road in two parts:

1. Commencing 13 metres east of western building line of cinema opposite No 19 and extending 10 metres east.
2. Commencing 3 metres east of cinema exit doors opposite Ye Old Valentine public house and extending 33 metres east.

From Leytonstone Bus Station.

Buses proceed from Eastern Avenue via Gants Hill Cross, Cranbrook Road, Bramley Crescent and Perth Road to stand, departing via Perth Road, Eastern Avenue and Gants Hill Cross to Eastern Avenue. Set down in Eastern Avenue, at Stop EB and pick up in Eastern Avenue, at Stop EV.

From Romford Station.

Buses proceed from Eastern Avenue via Gants Hill Cross, Cranbrook Road, Bramley Crescent and Perth Road to stand, departing via Perth Road, Eastern Avenue and Gants Hill Cross to Eastern Avenue. Set down in Eastern Avenue, at Stop ET and pick up in Eastern Avenue, at Stop EC.

AVAILABILITY:	At any time.
OPERATING RESTRICTIONS:	Unscheduled curtailments only.
MEAL RELIEFS:	No meal relief vehicles to stand at any time.
FERRY VEHICLES:	No ferry vehicles to park on stand at any time.
DISPLAY:	Gants Hill.

REDBRIDGE STATION

Private stand for three buses on station forecourt in two parts:

1. For one bus on east side of station buildings, commencing in line with the centre of the station car park entrance and extending 10 metres southwards.
2. For two buses in marked bays on north side of station buildings.

From Leytonstone Bus Station.

Buses proceed from Redbridge Station Forecourt direct to stand, departing via Redbridge Station Forecourt, Redbridge Lane East and Redbridge Roundabout to Eastern Avenue. Set down in Redbridge Station Forecourt, at Stop RA and pick up in Eastern Avenue, at Stop RD.

From Romford Station.

Buses proceed from Eastern Avenue via Redbridge Roundabout, Eastern Avenue and Redbridge Station Forecourt to stand, departing to Redbridge Station Forecourt. Set down in Eastern Avenue, at Stop RC and pick up in Redbridge Station Forecourt, at Stop RA.

AVAILABILITY:	At any time.
OPERATING RESTRICTIONS:	Unscheduled curtailments only.
MEAL RELIEFS:	No meal relief vehicles to stand at any time.
FERRY VEHICLES:	No ferry vehicles to park on stand at any time.
DISPLAY:	Redbridge Station.

WANSTEAD, WOODBINE PLACE (from Romford Station)

Public stand on north side of Woodbine Place, commencing 5 metres west of Wanstead High Street and extending 58 metres west.

Buses proceed from Eastern Avenue via The Green, Wanstead High Street and Woodbine Place to stand, departing via Woodbine Place, Wanstead High Street and Kingfisher Avenue to Eastern Avenue. Set down in Eastern Avenue, at Stop A and pick up in Eastern Avenue, at Stop R.

AVAILABILITY:	At any time.
OPERATING RESTRICTIONS:	To be used for unscheduled curtailments only. Stand space at this location is limited: not to be used for scheduled journeys. Buses may have to be moved on at busy times. Buses should not obstruct bus stop at front of stand
MEAL RELIEFS:	No meal relief vehicles to stand at any time.
FERRY VEHICLES:	No ferry vehicles to park on stand at any time.
DISPLAY:	Wanstead.

LEYTONSTONE BUS STATION

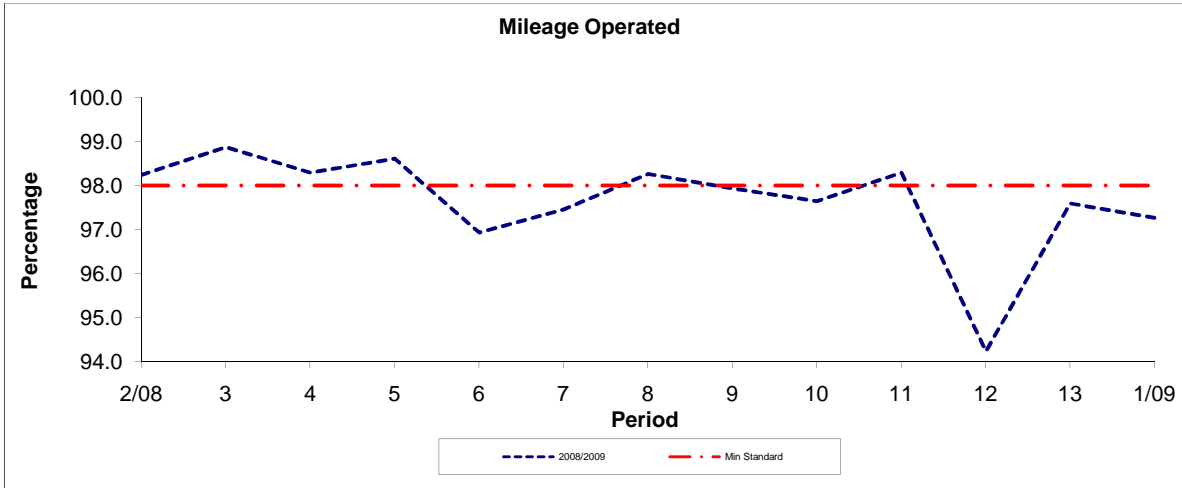
Private stand for five buses in bus station on north side of Kirkdale Road.

Buses proceed from Leytonstone Bus Station direct to stand, departing to Leytonstone Bus Station. Set down in Leytonstone Bus Station, at Stop X and pick up in Leytonstone Bus Station, at Stop T.

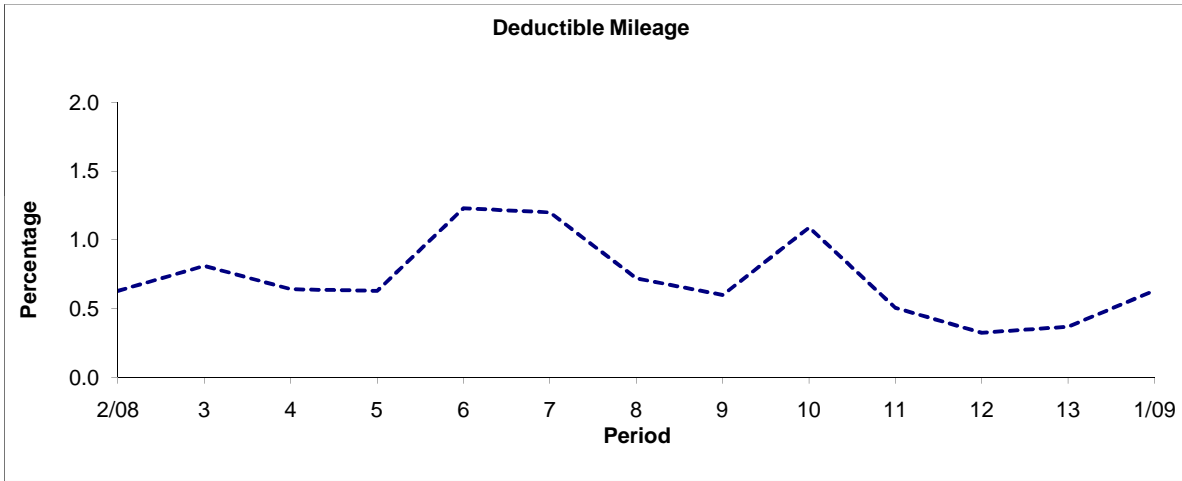
AVAILABILITY:	At any time.
OPERATING RESTRICTIONS:	No more than 2 vehicles on Route No. 66 should be scheduled to stand at any time
MEAL RELIEFS:	No meal relief vehicles to stand at any time.
FERRY VEHICLES:	No ferry vehicles to park on stand at any time.
DISPLAY:	Leytonstone.
OTHER INFORMATION:	LBSL Toilet facilities available 24 hours a day.

PART B - PERFORMANCE STATISTICS

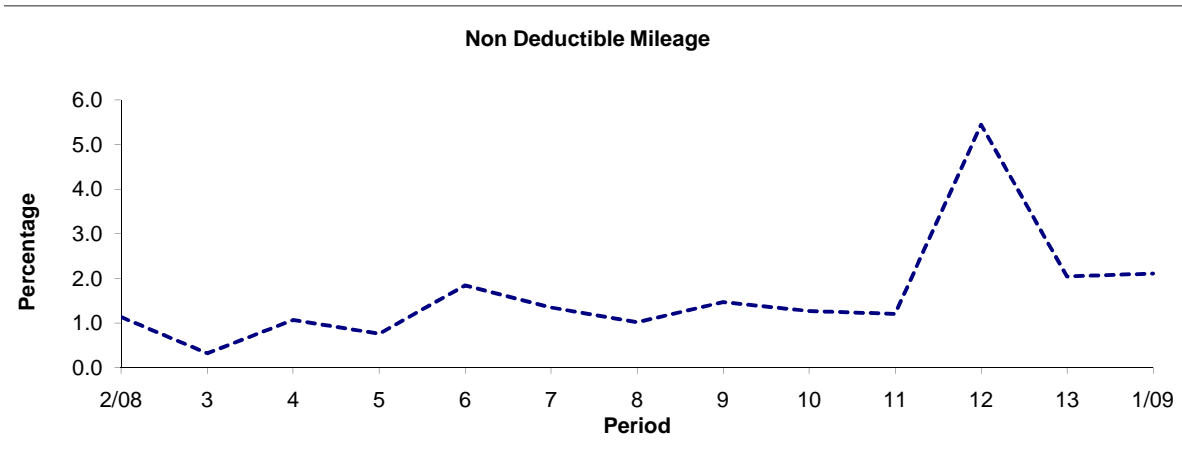
Route 66



Period	2/08	3	4	5	6	7	8	9	10	11	12	13	1/09
2008/2009	98.24	98.87	98.29	98.61	96.93	97.45	98.26	97.93	97.64	98.29	94.23	97.59	97.26
Min Standard	98.00	98.00	98.00	98.00	98.00	98.00	98.00	98.00	98.00	98.00	98.00	98.00	98.00



Period	2/08	3	4	5	6	7	8	9	10	11	12	13	1/09
2008/2009	0.63	0.81	0.64	0.63	1.23	1.20	0.72	0.60	1.09	0.51	0.32	0.37	0.63

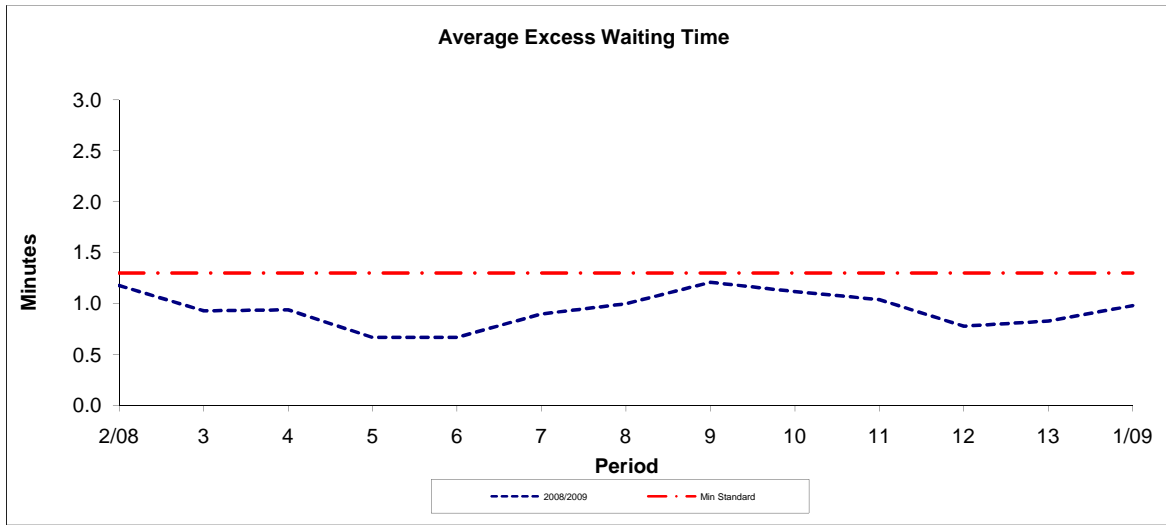


Period	2/08	3	4	5	6	7	8	9	10	11	12	13	1/09
2008/2009	1.13	0.32	1.07	0.76	1.84	1.35	1.02	1.47	1.27	1.20	5.45	2.04	2.11

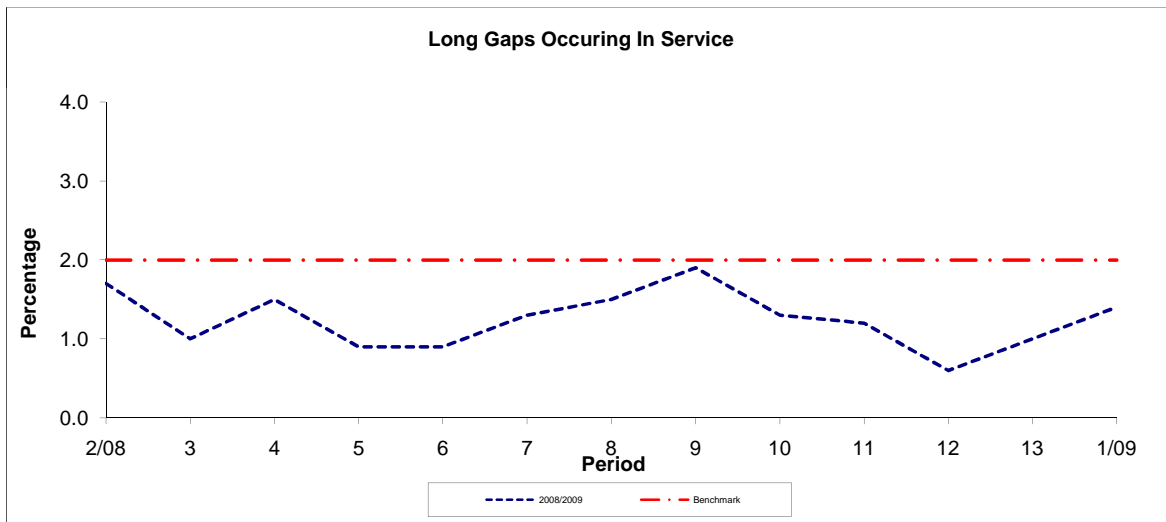
Note : Mileage is based on 4 weeks data

PART B - PERFORMANCE STATISTICS

Route 66



Period	2/08	3	4	5	6	7	8	9	10	11	12	13	1/09
2008/2009	1.18	0.93	0.94	0.67	0.67	0.90	1.00	1.21	1.12	1.04	0.78	0.83	0.98
Min Standard	1.30	1.30	1.30	1.30	1.30	1.30	1.30	1.30	1.30	1.30	1.30	1.30	1.30



Period	2/08	3	4	5	6	7	8	9	10	11	12	13	1/09
2008/2009	1.70	1.00	1.50	0.90	0.90	1.30	1.50	1.90	1.30	1.20	0.60	1.00	1.40
Benchmark	2.00	2.00	2.00	2.00	2.00	2.00	2.00	2.00	2.00	2.00	2.00	2.00	2.00

Note : Reliability is based on 12 weeks rolling data