

7. Service Specification

Route: 24/N24

Contract Reference: QC39701

This Service Specification forms section 7 of the ITT and should be read in conjunction with the ITT document, Version 1 dated 29 September 2011.

You are formally invited to tender for the provision of the bus service detailed below and in accordance with this Service Specification. Tenderers must ensure that a Compliant Tender is submitted and this will only be considered for evaluation if all parts of the Tender documents, as set out in section 11, have been received by the Corporation by the Date of Tender. The Tender must be fully completed in the required format, in accordance with the Instructions to Tenderers. A Compliant Tender must comply fully with the requirements of the Framework Agreement; adhere to the requirements of the Service Specification; and reflect the price of operating the Services with new vehicles.

Terminus Points	Pimlico, Grosvenor Road to Hampstead Heath, South End Green
Contract Basis	Incentivised
Commencement Date	10 th November 2012
Vehicle Type	87 capacity, dual door, double deck buses
Current Maximum Approved Dimensions	10.1 metres long and 2.55 metres wide
New Vehicles Mandatory	Yes
Hybrid Price Required	Yes
Sponsored Route	No
Minimum Performance Standard	Average Excess Wait Time - No more than 1.30 minutes
Extension Threshold	Average Excess Wait Time Threshold - 1.15 minutes
Advertising Rights	Operator
Minimum Operated Mileage Standard	No less than 98.00%

The Date of Tender for this ITT is: No later than 12 Noon on 14th November 2011

Tenderers should refer to section 3 of Part A for the Service Specification Explanatory Notes and Appendix B of section 5 for the Example Service Specification of the ITT document.

SERVICE SPECIFICATION

- 1) SERVICE SPEC – ROUTE SPECIFICATION INFORMATION
- 2) NOTES
- 3) SCHEDULE REQUIREMENTS & PINCHPOINTS
- 4) QSI POINTS & MILEAGE
- 5) OPERATIONAL CONSIDERATIONS
- 6) CURRENT PERFORMANCE ROUTE RECORD & IBUS MILEAGE

2) NOTES

Proposed Changes:

At this time, the Corporation expects to implement a change to the existing service prior to the commencement of the new Route Agreement for Route Nos. 24 & N24.

- As part of the main Victoria Station Upgrade works, Allington Street will close for approximately 2 years. As a result Route Nos. 24 & N24 are temporarily diverted towards Hampstead Heath, South End Green only from 3rd May 2011 until 4th May 2013. No change to routing towards Pimlico, Grosvenor Road.

Tenderers should note that the following alterations (subject to consultation) are proposed as part of this Service Specification for introduction with the new Route Agreement:

- Mondays to Saturdays daytime frequencies are decreased from every 5 minutes to every 6 minutes.
- The additional Mondays to Fridays AM peak flow journey towards Pimlico, Grosvenor Road is withdrawn.
- Tenderers should refer to the schedules dated 13/12/2010 rather than the current emergency schedules.
- The designation Route No. N24 is used for contractual purposes only. This service will be marketed as Route No. 24. This includes all publicity, including destination blind displays.
- **Tenderers must identify the cost of the Nightly element of this service separately.**

Supplementary Information:

Route No. 24 running times can vary greatly and be unpredictable throughout the traffic day. Tenderers are therefore asked to give specific consideration to how this would be managed and to detail their specific proposals when submitting their bids. In connection with this the following should be noted.

- Effectively-managed mid-route changeovers will be considered.
- Proposals with additional flexibility in driver duties to counter unpredictable traffic conditions will be considered favourably.
- Tenderers should consider whether spare drivers located at terminals at specific times would be of benefit.
- Any other reasonable proposals specifically aim at improving reliability and minimising traffic lost mileage will be considered by the Corporation.

3) SCHEDULE REQUIREMENTS & PINCHPOINTS

3.1) MONDAY TO FRIDAY SCHEDULE REQUIREMENTS & PINCHPOINTS

Pimlico, Grosvenor Road to Hampstead Heath, South End Green		Hampstead Heath, South End Green to Pimlico, Grosvenor Road			
First departure no later than 0530.		First departure no later than 0445.			
0525 - 0645	Every 15 minutes	0440 - 0530	Every 15 minutes		
0646 - 0715	Every 10 minutes	0531 - 0600	Every 10 minutes		
0716 - 0730	Every 7-8 minutes (8 buses per hour)	0601 - 0630	Every 7-8 minutes (8 buses per hour)		
0731 - 2000	Every 6 minutes	0631 - 1900	Every 6 minutes		
2001 - 2100	Every 7-8 minutes (8 buses per hour)	1901 - 2000	Every 7-8 minutes (8 buses per hour)		
2101 - 2400	Every 10 minutes	2001 - 2300	Every 10 minutes		
0001 - 0105	Every 15 minutes	2301 - 0020	Every 15 minutes		
Last departure no earlier than 0100.		Last departure no earlier than 0015.			
Pinchpoints					
Warren Street Station	0710 - 0750	10 minutes	Trafalgar Square, East Side	0715 - 0900	6 minutes
	0751 - 0805	8 minutes		1500 - 1630	6 minutes
	0806 - 0900	6 minutes			
	1500 - 1630	6 minutes			

3.2) SATURDAY AND GOOD FRIDAY SCHEDULE REQUIREMENTS & PINCHPOINTS

Pimlico, Grosvenor Road to Hampstead Heath, South End Green		Hampstead Heath, South End Green to Pimlico, Grosvenor Road			
First departure no later than 0530.		First departure no later than 0445.			
0525 - 0715	Every 15 minutes	0440 - 0630	Every 15 minutes		
0716 - 0845	Every 10 minutes	0631 - 0800	Every 10 minutes		
0846 - 0930	Every 7-8 minutes (8 buses per hour)	0801 - 0900	Every 7-8 minutes (8 buses per hour)		
0931 - 1900	Every 6 minutes	0901 - 1800	Every 6 minutes		
1901 - 2000	Every 7-8 minutes (8 buses per hour)	1801 - 1900	Every 7-8 minutes (8 buses per hour)		
2001 - 2400	Every 10 minutes	1901 - 2300	Every 10 minutes		
0001 - 0105	Every 15 minutes	2301 - 0020	Every 15 minutes		
Last departure no earlier than 0100.		Last departure no earlier than 0015.			
Pinchpoints					
Warren Street Station	0930 - 1005	8 minutes	Trafalgar Square, East Side	0945 - 1100	6 minutes
	1006 - 1100	6 minutes			

3) SCHEDULE REQUIREMENTS & PINCHPOINTS - continued

3.3) SUNDAY AND PUBLIC HOLIDAY SCHEDULE REQUIREMENTS & PINCHPOINTS

Pimlico, Grosvenor Road to Hampstead Heath, South End Green		Hampstead Heath, South End Green to Pimlico, Grosvenor Road			
First departure no later than 0530.		First departure no later than 0445.			
0525 - 0745	Every 15 minutes	0440 - 0700	Every 15 minutes		
0746 - 1045	Every 10 minutes	0701 - 0930	Every 10 minutes		
1046 - 1900	Every 7-8 minutes (8 buses per hour)	0931 - 1800	Every 7-8 minutes (8 buses per hour)		
1901 - 2400	Every 10 minutes	1801 - 2300	Every 10 minutes		
0001 - 0105	Every 15 minutes	2301 - 0020	Every 15 minutes		
Last departure no earlier than 0100.		Last departure no earlier than 0015.			
Pinchpoints					
Warren Street Station	1045 -1125	10 minutes	Trafalgar Square, East Side	1035 - 1205	8 minutes
	1126 -1200	8 minutes			

3.4) BOXING DAY SCHEDULE REQUIREMENTS & PINCHPOINTS

Pimlico, Grosvenor Road to Hampstead Heath, South End Green		Hampstead Heath, South End Green to Pimlico, Grosvenor Road			
First departure no later than 0810.		First departure no later than 0805.			
0805 - 1045	Every 10 minutes	0800 - 0930	Every 10 minutes		
1046 - 1900	Every 7-8 minutes (8 buses per hour)	0931 - 1800	Every 7-8 minutes (8 buses per hour)		
1901 - 2400	Every 10 minutes	1801 - 2300	Every 10 minutes		
0001 - 0105	Every 15 minutes	2301 - 0020	Every 15 minutes		
Last departure no earlier than 0100.		Last departure no earlier than 0015.			
Pinchpoints					
Warren Street Station	1045 -1125	10 minutes	Trafalgar Square, East Side	1035 - 1205	8 minutes
	1126 -1200	8 minutes			

3.5) NIGHTLY

Pimlico, Grosvenor Road to Hampstead Heath, South End Green		Hampstead Heath, South End Green to Pimlico, Grosvenor Road			
First departure no later than 0115.		First departure no later than 0030.			
0110 - 0520	Every 15 minutes	0025 - 0435	Every 15 minutes		
Last departure no earlier than 0515.		Last departure no earlier than 0430.			

Tenderers must identify the cost of the Nightly element of this service separately.

4) QSI POINTS & MILEAGE

It is intended Route No. 24 will have 96 surveys per quarter at the following locations:

QSI POINTS	
Towards Hampstead Heath, South End Green	Towards Pimlico, Grosvenor Road
Victoria	Hampstead Heath
Trafalgar Square \$	Camden Town
Camden Town	Trafalgar Square \$
MILEAGE: See Attached iBus Sheets	

\$ This location is recorded simultaneously in both directions - counted as two surveys.

It is unlikely that the minimum number of QSI surveys for performance measurement will be conducted on Route No. N24 at present. However, this may change at a later date.

5) OPERATIONAL CONSIDERATIONS

- 5.1) Route No. 24 should interwork with Route No. 29 between Trafalgar Square and Camden Town Station.
- 5.2) Route No. 24 should interwork with Route No. N24 to form a seamless 24 hour service.
- 5.3) Route No. 24 can suffer from unpredictable traffic delays throughout central London and in particular in the Tottenham Court Road and Camden areas (particularly on Sundays due to Camden Market).
- 5.4) Route Nos. 24 & N24 currently carry passengers across the Pimlico stand working. Thus, passengers boarding at Lupus Street, Churchill Gardens intending to travel towards Hampstead Heath can remain on the bus at the stand. It is expected that this arrangement will continue under the new contract.
- 5.5) A major rebuilding of the Underground Station at Victoria is being undertaken. Works are likely to last until the end of 2015. During this period routeings and stopping and standing arrangements in the area may be subject to change. Any such changes will be discussed with the successful Tenderer as appropriate.

5) OPERATIONAL CONSIDERATIONS - continued

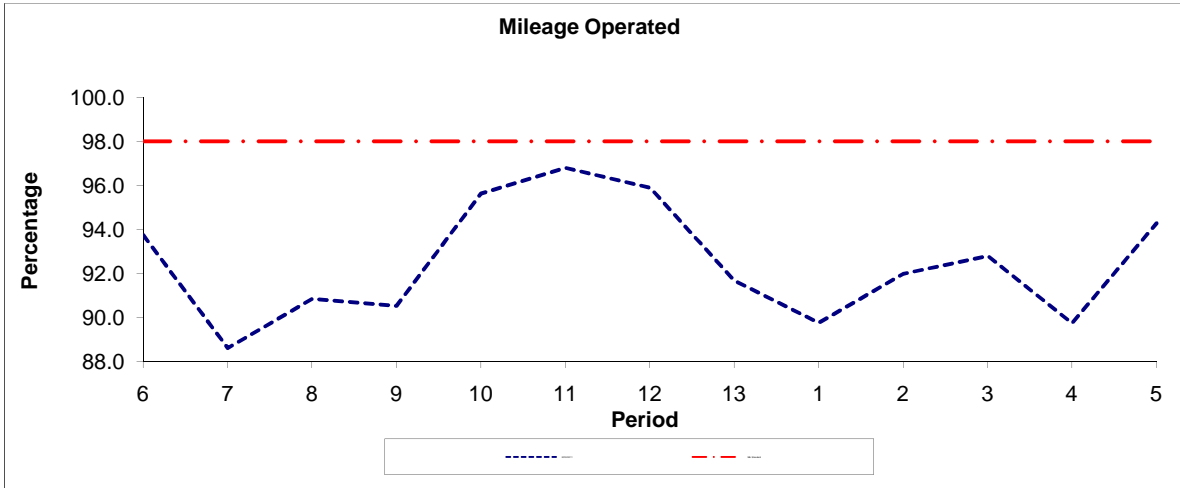
- 5.6) Crossrail will connect the City, Canary Wharf, the West End and Heathrow Airport to commuter areas east and west of the capital. Major construction of the railway began in 2010, with services expected to commence in 2018. The construction impacts of Crossrail could affect Route Nos. 24 & N24 and it is anticipated that some passenger demand for Route Nos. 24 & N24 would shift to this line when it opens. Route Nos. 24 & N24 will be reviewed closer to the opening date.

6) CURRENT PERFORMANCE, ROUTE RECORD & IBUS MILEAGE

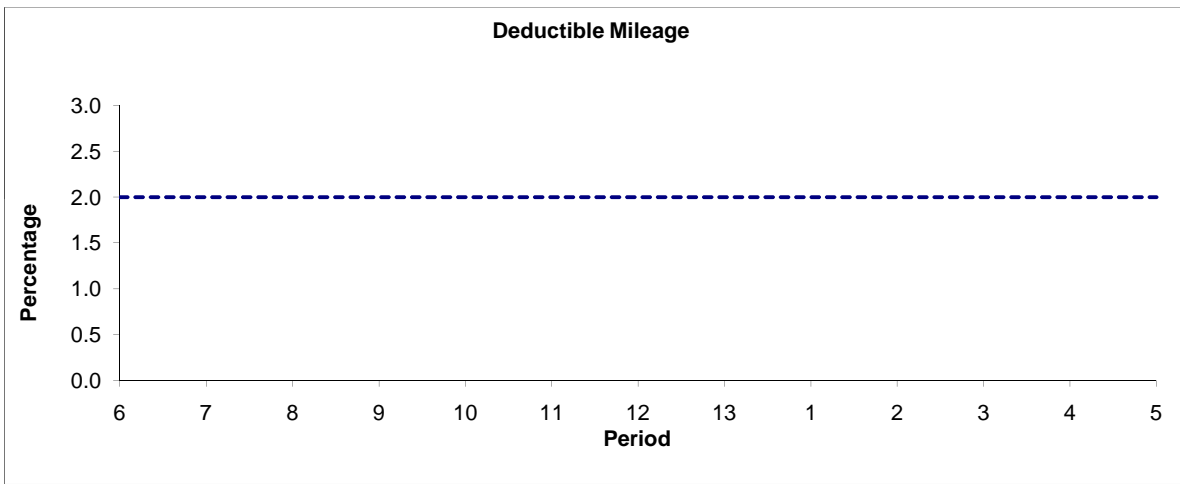
- 6.1) CURRENT PERFORMANCE
As per current print out.
- 6.2) ROUTE RECORD
As per Busnet Printout.
- 6.3) IBUS MILEAGE
As per current print out.

PART B - PERFORMANCE STATISTICS

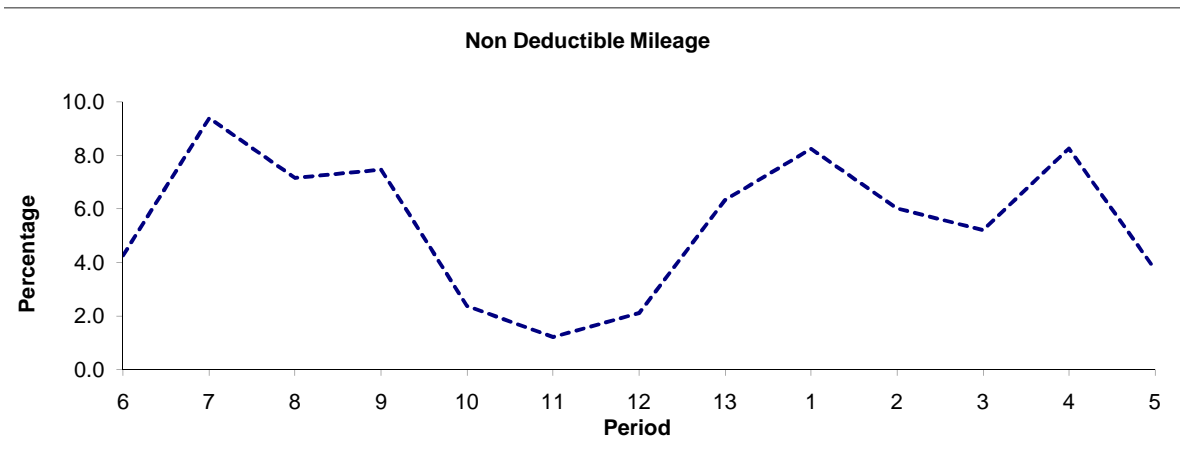
Route 24



Period	6	7	8	9	10	11	12	13	1	2	3	4	5
2010/2011	93.74	88.61	90.85	90.53	95.63	96.79	95.89	91.67	89.75	91.98	92.80	89.74	94.27
Min Standard	98.00	98.00	98.00	98.00	98.00	98.00	98.00	98.00	98.00	98.00	98.00	98.00	98.00



Period	6	7	8	9	10	11	12	13	1	2	3	4	5
2010/2011	2.00	2.00	2.00	2.00	2.00	2.00	2.00	2.00	2.00	2.00	2.00	2.00	2.00

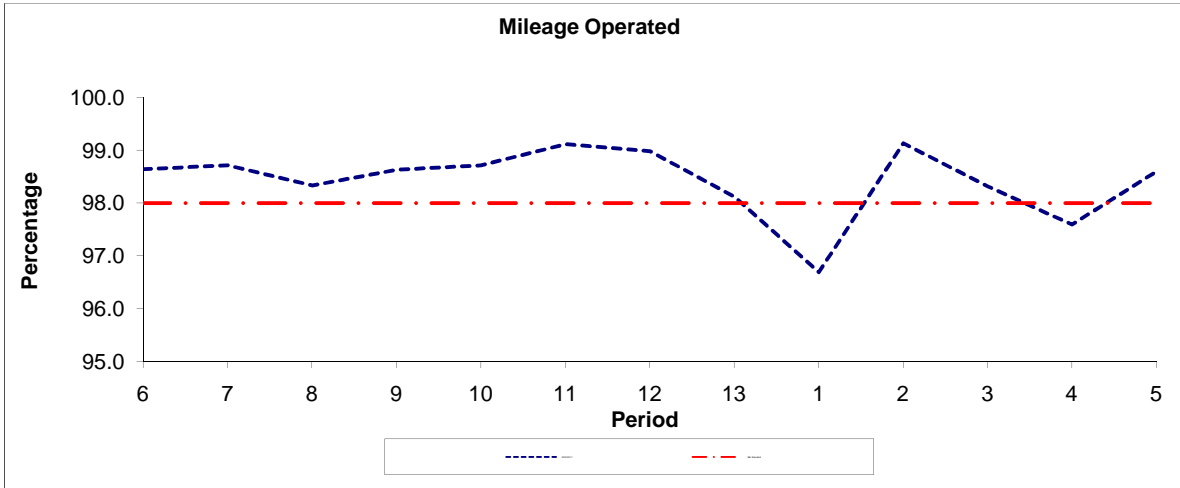


Period	6	7	8	9	10	11	12	13	1	2	3	4	5
2010/2011	4.26	9.39	7.15	7.47	2.37	1.21	2.11	6.33	8.25	6.02	5.20	8.26	3.73

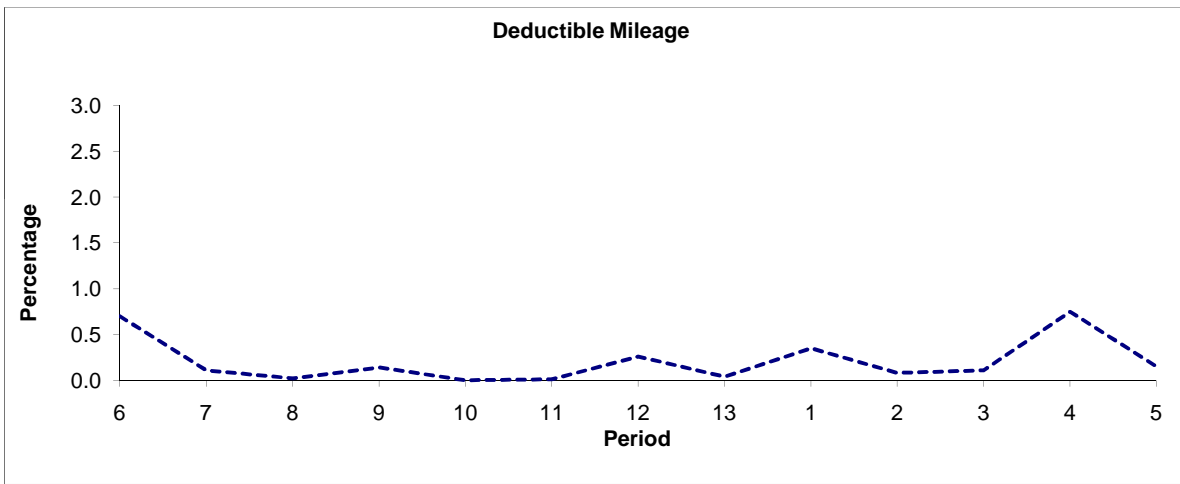
Note : Mileage is based on 4 weeks data

PART B - PERFORMANCE STATISTICS

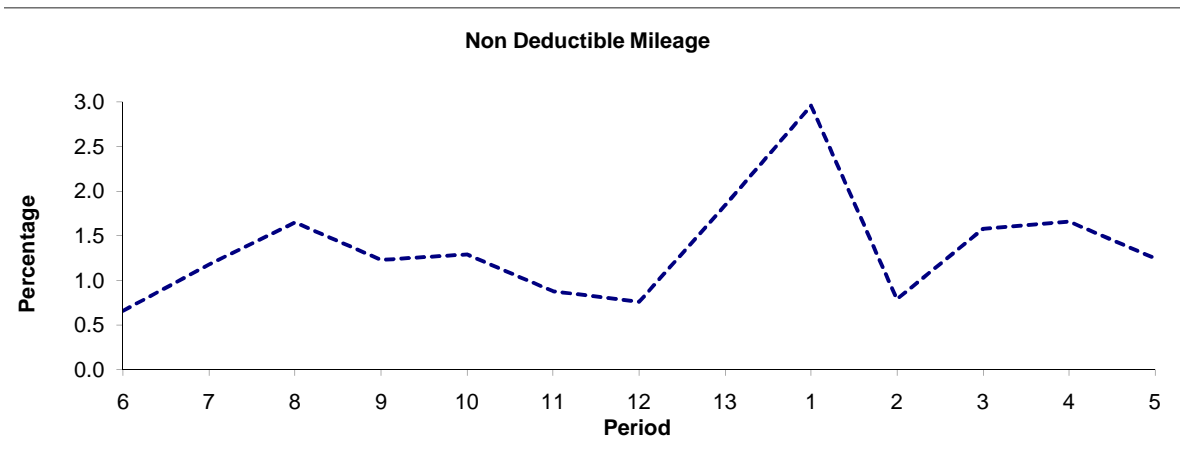
Route N24



Period	6	7	8	9	10	11	12	13	1	2	3	4	5
2010/2011	98.64	98.71	98.33	98.63	98.71	99.11	98.98	98.12	96.69	99.13	98.31	97.59	98.60
Min Standard	98.00	98.00	98.00	98.00	98.00	98.00	98.00	98.00	98.00	98.00	98.00	98.00	98.00



Period	6	7	8	9	10	11	12	13	1	2	3	4	5
2010/2011	0.70	0.11	0.02	0.14	0.00	0.01	0.26	0.04	0.35	0.08	0.11	0.75	0.15

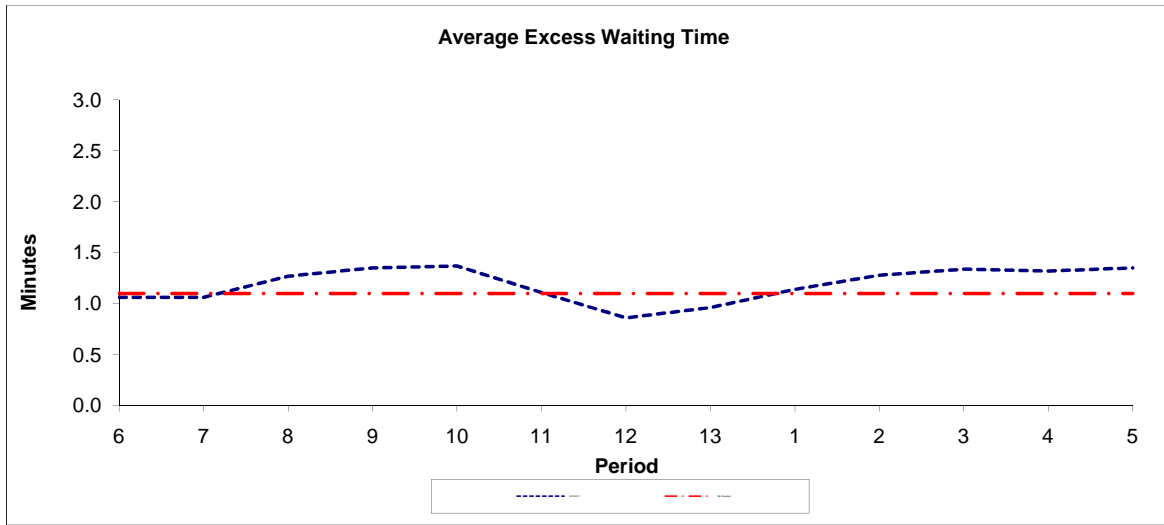


Period	6	7	8	9	10	11	12	13	1	2	3	4	5
2010/2011	0.66	1.18	1.65	1.23	1.29	0.88	0.76	1.84	2.96	0.79	1.58	1.66	1.25

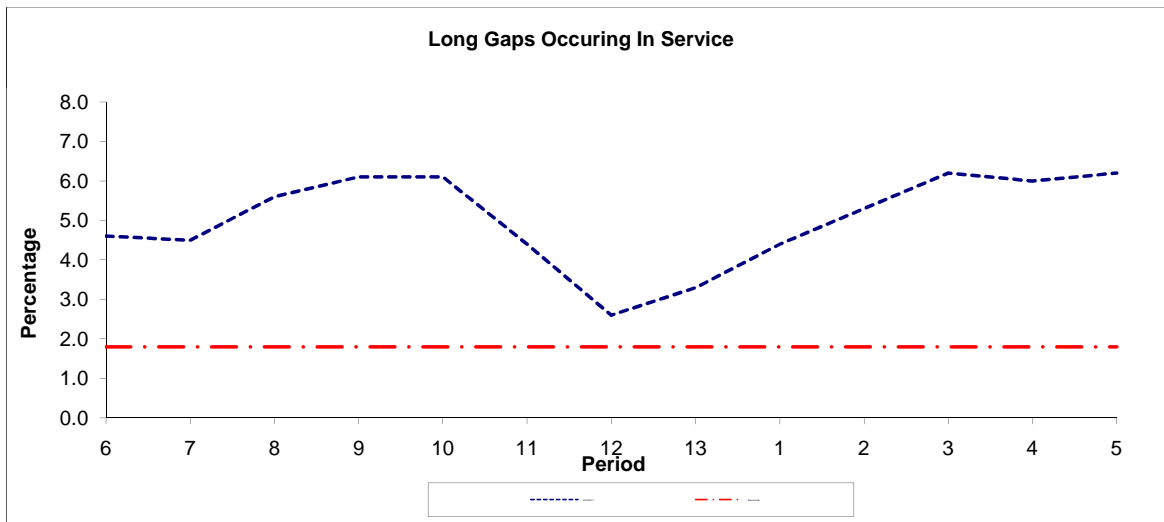
Note : Mileage is based on 4 weeks data

PART B - PERFORMANCE STATISTICS

Route 24



Period	6	7	8	9	10	11	12	13	1	2	3	4	5
2010/2011	1.06	1.06	1.27	1.35	1.37	1.11	0.86	0.96	1.14	1.28	1.34	1.32	1.35
Min Standard	1.10	1.10	1.10	1.10	1.10	1.10	1.10	1.10	1.10	1.10	1.10	1.10	1.10

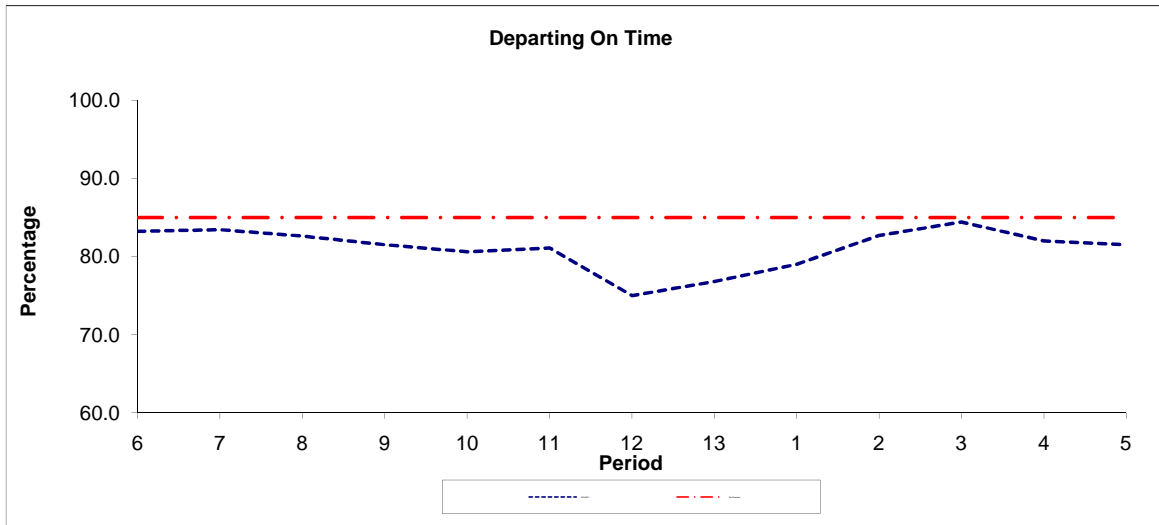


Period	6	7	8	9	10	11	12	13	1	2	3	4	5
2010/2011	4.60	4.50	5.60	6.10	6.10	4.40	2.60	3.30	4.40	5.30	6.20	6.00	6.20
Benchmark	1.80	1.80	1.80	1.80	1.80	1.80	1.80	1.80	1.80	1.80	1.80	1.80	1.80

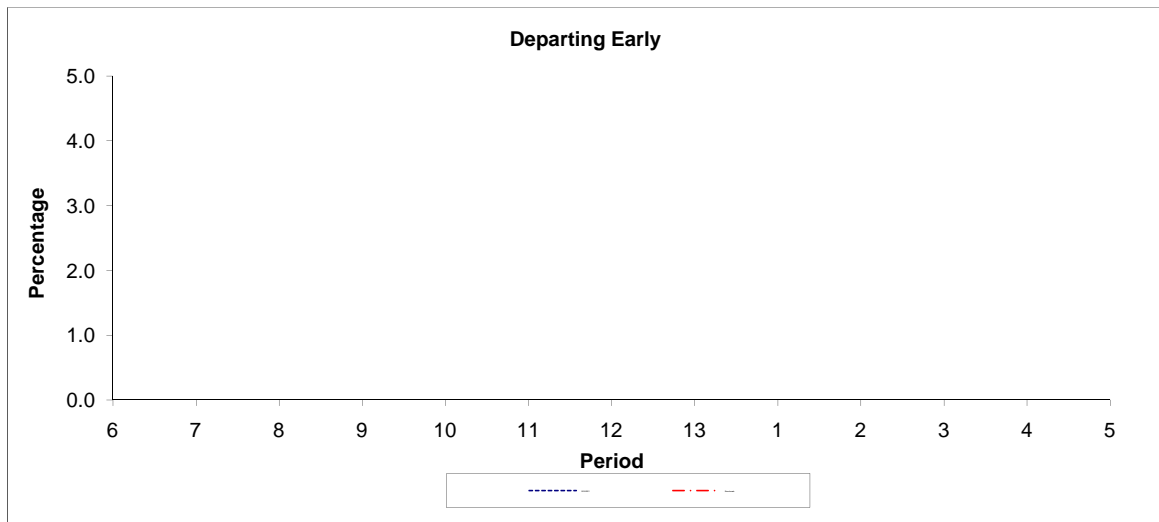
Note : Reliability is based on 12 weeks rolling data

PART B - PERFORMANCE STATISTICS

Route N24



Period	6	7	8	9	10	11	12	13	1	2	3	4	5
2010/2011	83.20	83.40	82.60	81.50	80.60	81.10	75.00	76.80	79.00	82.70	84.40	82.00	81.50
Min Standard	85.00	85.00	85.00	85.00	85.00	85.00	85.00	85.00	85.00	85.00	85.00	85.00	85.00



Period	6	7	8	9	10	11	12	13	1	2	3	4	5
2010/2011													
Benchmark													

Note : Reliability is based on 12 weeks rolling data

LONDON BUSES - ROUTE DESCRIPTION

ROUTE 24: Pimlico, Grosvenor Road - Hampstead Heath, South End Green (24 hour service)

Date of Structural Change: 10 November 2012.

Date of Service Change: 10 November 2012.

Reason for Issue: New contract, not yet awarded.

STREETS TRAVERSED

Towards Hampstead Heath, South End Green: Grosvenor Road, Claverton Street, Lupus Street, St George's Square, Belgrave Road, Denbigh Street, Wilton Road, Victoria Street, Grosvenor Gardens, Lower Grosvenor Place, Bressenden Place, Victoria Street, Broad Sanctuary, Parliament Square, Parliament Street, Whitehall, Charing Cross, Trafalgar Square (South Side), Trafalgar Square (East Side), St Martin's Place, Charing Cross Road, St Giles High Street, New Oxford Street, Tottenham Court Road, Hampstead Road, Camden High Street, Chalk Farm Road, Ferdinand Street, Malden Crescent, Malden Road, Southampton Road, Fleet Road.

Towards Pimlico, Grosvenor Road: South End Green [Eastern Arm], Constantine Road, Agincourt Road, Southampton Road, Malden Road, Malden Crescent, Ferdinand Street, Chalk Farm Road, Castlehaven Road, Hawley Road, Camden Street, Camden Road, Bayham Street, Crowndale Road, Hampstead Road, Harrington Square (East And South Sides), Hampstead Road, Euston Road, Gower Street, Bedford Square, Bloomsbury Street, Shaftesbury Avenue, High Holborn, St Giles High Street, Denmark Street, Charing Cross Road, St Martin's Place, Trafalgar Square (East Side), Charing Cross, Whitehall, Parliament Street, Parliament Square, Broad Sanctuary, Victoria Street, Vauxhall Bridge Road, Neathouse Place, Wilton Road, Denbigh Street, Belgrave Road, St George's Square, Lupus Street, Grosvenor Road.

STANDING AND TURNING POINTS

PIMLICO, GROSVENOR ROAD

Public stand on north side of Grosvenor Road, commencing 48 metres west of Paxton Terrace and extending 27 metres west.

Buses proceed from Grosvenor Road direct to stand, departing to Grosvenor Road. Set down in Grosvenor Road, at stop CM and pick up in Grosvenor Road, at stop CM.

AVAILABILITY:	At any time.
OPERATING RESTRICTIONS:	No more than 2 buses on Route 24 should be scheduled to stand at any one time.
MEAL RELIEFS:	No meal relief vehicles to stand at any time.
FERRY VEHICLES:	No ferry vehicles to park on stand at any time.
DISPLAY:	Pimlico.
OTHER INFORMATION:	Drivers must allow passenger boarding along the Pimlico loop to remain on the bus at the stand, if they wish to travel towards Victoria (or beyond). No toilet facilities currently available.

PARLIAMENT SQUARE (from HAMPSTEAD HEATH, SOUTH END GREEN)

Buses proceed from Parliament Street via Parliament Square departing to Parliament Street. Set down in Parliament Street, at stop G and pick up in Parliament Street, at stop C.

AVAILABILITY:	At any time.
OPERATING RESTRICTIONS:	Turning Point Only - Buses must not stand
DISPLAY:	Parliament Square.

TRAFALGAR SQUARE (from HAMPSTEAD HEATH, SOUTH END GREEN)

Buses proceed from Trafalgar Square (East Side) via Charing Cross and Trafalgar Square (South Side) departing to Trafalgar Square (East Side). Set down in Trafalgar Square (east Side), at stop D and pick up in Trafalgar Square (east Side), at stop C.

AVAILABILITY:	At any time.
OPERATING RESTRICTIONS:	Turning Point Only - Buses must not stand
DISPLAY:	Trafalgar Square.

CHENIES STREET (from Pimlico, Grosvenor Road)

Buses proceed from Tottenham Court Road via Chenies Street departing to Gower Street. Set down in Tottenham Court Road, at stop E and pick up in Gower Street, at stop D.

AVAILABILITY: At any time.
OPERATING RESTRICTIONS: **Turning Point Only - Buses must not stand**
DISPLAY: Tottenham Court Road.

WARREN STREET STATION, UNIVERSITY COLLEGE HOSPITAL

Public stand for four buses on nearside of slip road on south side of Euston Road between Tottenham Court Road and Gower Street, commencing 5 metres west of a point opposite lamp standard no. 301 extending 40 metres west.

From Hampstead Heath, South End Green.

Buses proceed from Hampstead Road via Euston Road to stand, departing via Euston Road, Gower Street and Grafton Way to Tottenham Court Road. Set down in Hampstead Road, at stop R and pick up in Tottenham Court Road, at stop X.

From Pimlico, Grosvenor Road.

Buses proceed from Tottenham Court Road via Euston Road to stand, departing via Euston Road to Gower Street. Set down in Tottenham Court Road, at stop X and pick up in Gower Street, at stop N.

AVAILABILITY: At any time.
OPERATING RESTRICTIONS: Unscheduled curtailments only
MEAL RELIEFS: No meal relief vehicles to stand at any time.
FERRY VEHICLES: No ferry vehicles to park on stand at any time.
DISPLAY: Warren Street.

MORNINGTON CRESCENT STATION (from HAMPSTEAD HEATH, SOUTH END GREEN)

Public stand for two buses on east side (offside) of Hampstead Road, commencing 49 metres south of Harrington Square (north arm) and extending 26 metres south. Buses proceed from Harrington Square (East And South Sides) via Hampstead Road to stand, departing to Hampstead Road. Set down in Harrington Square, at stop C and pick up in Hampstead Road, at stop A.

AVAILABILITY: At any time.
OPERATING RESTRICTIONS: Unscheduled curtailments only.
MEAL RELIEFS: No meal relief vehicles to stand at any time.
FERRY VEHICLES: No ferry vehicles to park on stand at any time.
DISPLAY: Mornington Crescent.

CAMDEN TOWN, CAMDEN GARDENS (from Pimlico, Grosvenor Road)

Public stand for three buses on north side of Camden Gardens, commencing 3 metres west of Camden Street and extending 31 metres west to a point 3 metres east of Kentish Town Road.

Buses proceed from Camden High Street via Camden Road, Kentish Town Road and Camden Gardens to stand, departing via Camden Gardens and Camden Street to Camden Road. Set down in Camden High Street, at stop X and pick up in Camden Road, at stop S.

AVAILABILITY: At any time.
OPERATING RESTRICTIONS: Unscheduled curtailments only.
MEAL RELIEFS: No meal relief vehicles to stand at any time.
FERRY VEHICLES: No ferry vehicles to park on stand at any time.
DISPLAY: Camden Town.

CHALK FARM, MORRISONS, PETROL STATION (from Pimlico, Grosvenor Road)

Public stand for two buses in slip road, commencing 30 metres south west of Chalk Farm Road and 55 metres north west of junction with Morrisons superstore access road opposite petrol station entrance, extending for 25 metres south east, at bus stop BP1806 point CH. Buses proceed from Chalk Farm Road via Morrisons Access Road to stand, departing via Morrisons Access Road to Chalk Farm Road. Set down in Chalk Farm Road, at stop CQ and pick up in Chalk Farm Road, at stop CP.

AVAILABILITY: At any time.
OPERATING RESTRICTIONS: Unscheduled curtailments only
MEAL RELIEFS: No meal relief vehicles to stand at any time.
FERRY VEHICLES: No ferry vehicles to park on stand at any time.
DISPLAY: Chalk Farm.

HAMPSTEAD HEATH, SOUTH END GREEN (EAST)

Public stand on east side of South End Green, commencing 2 metres north of the entrance to the ladies lavatory and extending 30 metres north.

Buses proceed from Fleet Road via Pond Street, South End Road and South End Green [Eastern Arm] to stand, departing to South End Green [Eastern Arm]. Set down in Fleet Road and pick up in South End Green [eastern Arm], at stop A.

AVAILABILITY: At any time.
OPERATING RESTRICTIONS: No more than 3 buses on Route 24 should be scheduled to stand at any one time.
MEAL RELIEFS: By arrangement.
FERRY VEHICLES: By arrangement.
DISPLAY: Hampstead Heath.
OTHER INFORMATION: LBSL toilets available 24 hours.

Transport for London - Live Mileage List

v2.0 - Mileage directly imported from Caesar

Route 24
 Service change 27650
 Date 30 April 2011
 Version Detail

Reason for Issue VSU Allington Street

OUT DIRECTION					
Timing Point	Code	Stop Number	Stop Name	Metres	Miles
PIMLGR	BP3192		Grosvenor Road		
		20976	Grosvenor Road	141	0.09
	8396	7825	ertton Street / Churchill Gard	391	0.24
		8396	Pimlico Academy & Library	181	0.11
PIMLSG	7815	8396	seorges Square / Pimlico Stat	365	0.23
		9813	Belgrave Road	272	0.17
		7827	Warwick Way	332	0.21
VCSNWR	33445		Victoria Station	293	0.18
		14973	Westminster Cathedral	1102	0.68
		20434	Westminster City Hall	241	0.15
		7863	New Scotland Yard	147	0.09
		20179	Westminster Abbey	340	0.21
		1645	minster Stn / Parliament Sq	440	0.27
		7867	Horse Guards Parade	285	0.18
TFSQES	BP3504		rafalgar Sq / Charing Cross St	542	0.34
		7823	Leicester Square Station	286	0.18
		37643	Cambridge Circus	228	0.14
		29684	Denmark Street	225	0.14
TCTRTC	BP2028	166	ottenham Court Road Station	428	0.27
			Percy Street	215	0.13
WARRST	660		Goodge Street Station	288	0.18
		8348	Warren Street Station	375	0.23
		675	Drummond Street	214	0.13
		1276	Robert Street	164	0.10
MNCRSN	14639		Silverdale	383	0.24
			Mornington Crescent Station	367	0.23
		1280	Camden High Street	305	0.19
CDTNSN	325	Camden Town Station	245	0.15	
CFRDHS	33533		artland Road / Camden Mark	597	0.37
		11427	Ferdinand Street	264	0.16
		11431	Prince Of Wales Road	158	0.10
		11734	Malden Road	143	0.09
		11435	Queen's Crescent	243	0.15
		2698	St Dominic's Priory	388	0.24
		11439	Mansfield Road	211	0.13
		11442	Fleet Road	276	0.17
HHTHSE	11443	Royal Free Hospital	308	0.19	

TOTAL ROUTE MILEAGE - OUT DIRECTION 11383 metres 7.07 miles

BACK DIRECTION					
Timing Point	Code	Stop Number	Stop Name	Metres	Miles
HHTHSE	37425		South End Green		
		11767	Cressy Road	251	0.16
CFRDHS	11994	11440	Mansfield Road	223	0.14
		11437	St Dominic's Priory	237	0.15
		11436	Grafton Terrace	288	0.18
		BP3884	Queen's Crescent	200	0.12
		11432	Prince Of Wales Roac	281	0.17
		11428	Ferdinand Street	318	0.20
		33259	Chalk Farm Morrison:	152	0.09
		33259	Hawley Road	443	0.28
		33096	Camden Gardens	214	0.13
		324	Camden Town Statio	308	0.19
CDTNSN	33260		Pratt Street	353	0.22
		33291	nington Crescent Sta	547	0.34
MNCRSN	1277		Silverdale	365	0.23
		1275	Robert Street	217	0.13
		33549	Street Station / Eustr	346	0.21
WARRST	29674		iversity College Hosp	459	0.29
		BP2167	Torrington Place	125	0.08
		29676	Chenies Street	229	0.14
		29735	Great Russell Street	379	0.24
TCTRSG	BP5283		enham Court Road St:	490	0.30
		R0085	Cambridge Circus	313	0.19
		7824	icester Square Static	222	0.14
		BP3536	St Martin's Place	209	0.13
		143	ar Square / Charing Ci	201	0.12
		152	itehall / Trafalgar Squ	224	0.14
VCSTWC	R0470		Horse Guards Parade	234	0.15
		BP5568	ister Stn / Parliamen	210	0.13
		128	th Street / Westmins	662	0.41
		7864	New Scotland Yard	262	0.16
		20472	Westminster City Hal	212	0.13
		7861	iall Bridge Rd / Victor	257	0.16
		7871	Warwick Way	571	0.35
		7814	Belgrave Road	278	0.17
		7816	ges Square / Pimlico	291	0.18
		8395	nlico Academy & Libr:	233	0.14
PIMLLS	7838		Alderney Street	236	0.15
		BP4392	Winchester Street	116	0.07
PIMLGR	70		Vestmoreland Terrac	257	0.16
		BP3192	Grosvenor Road	273	0.17

TOTAL ROUTE MILEAGE - BACK DIRECTION 11686 metres 7.26 miles